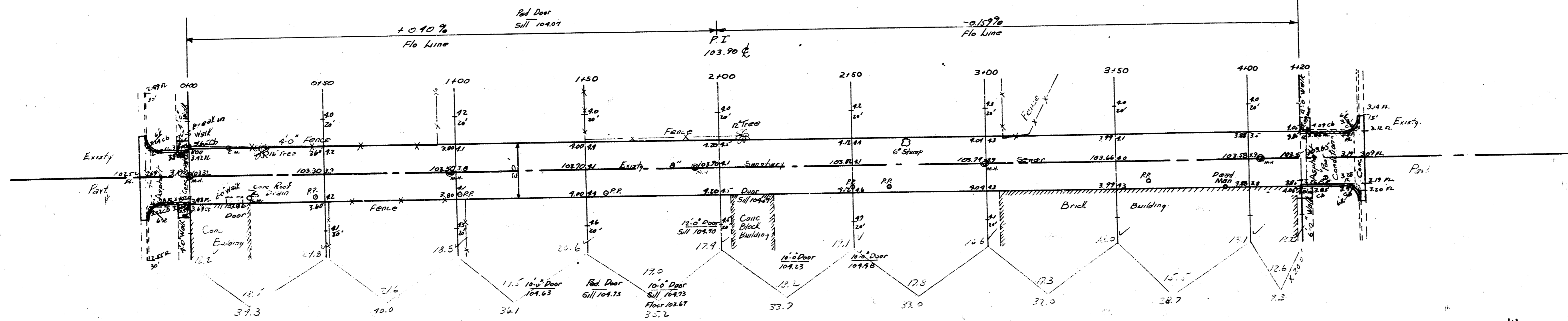


STREET

B.M. Iron in Thumb & Water No - Elm E/W 113.05  
Baseline = 6' Alley Going North

Scale 1"=20'

STREET

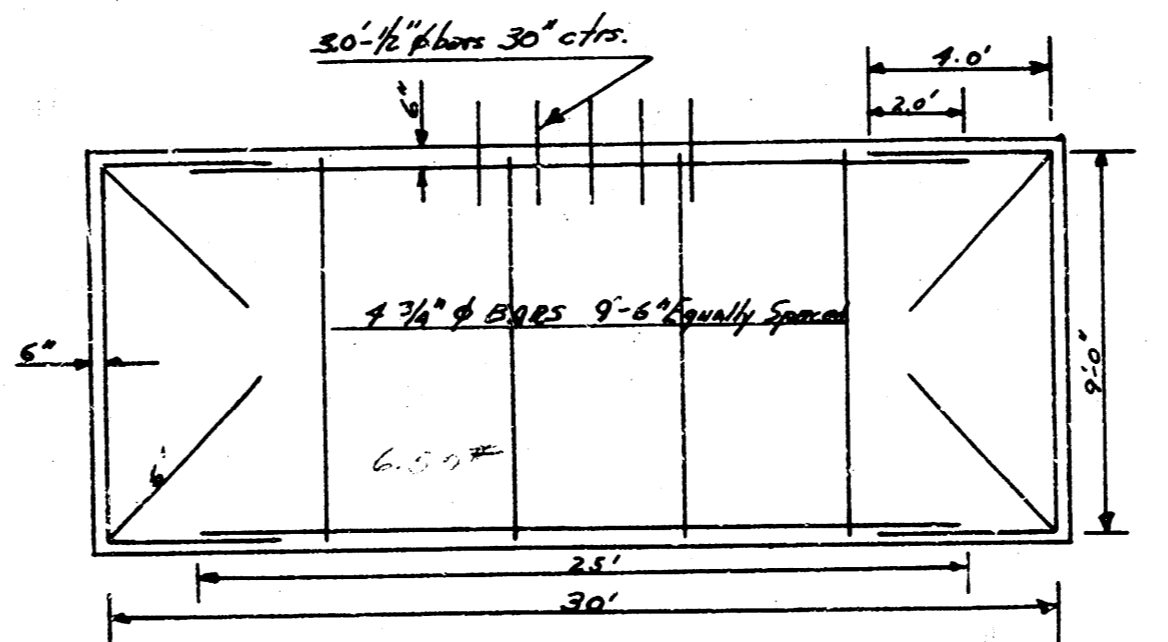
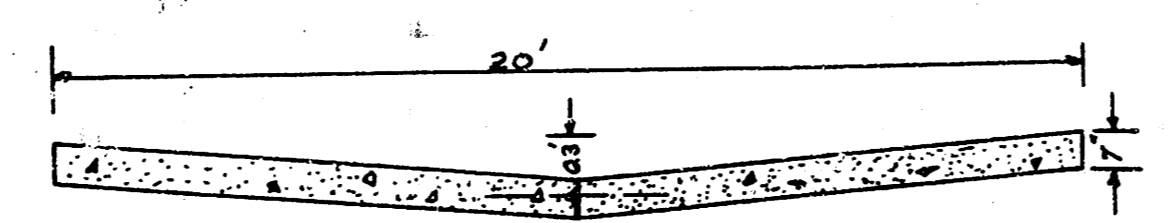


ELM

PINE

EXCAVATION

CITY	PROP	292.3
+ 10%	TOTAL	322.3
TOTAL		310.5



ALLEY ELM to PINE  
WATER to MAIN  
20' CONC 7"  
CITY OF WICHITA, KANSAS  
B.E. SMITH CITY ENGINEER  
DATE AUG. 1928, PROJ NO C11-122