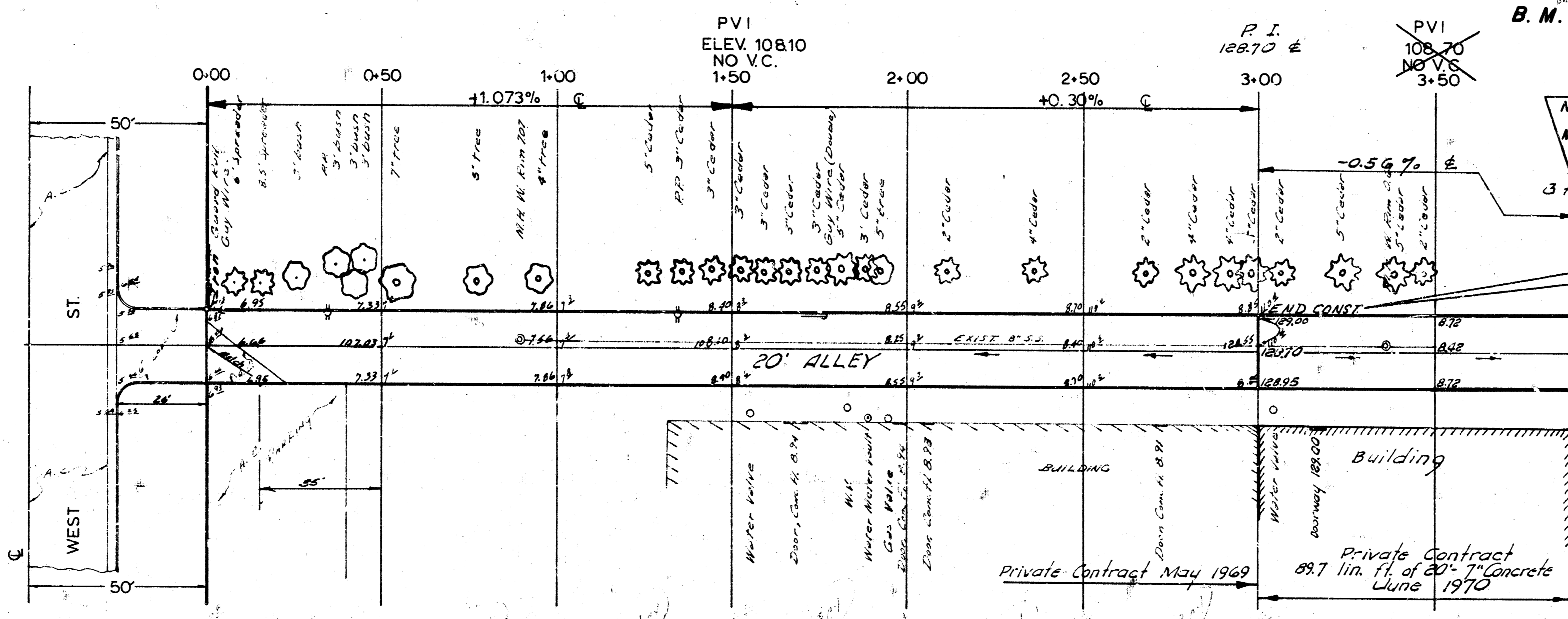


APPROVED
7-14-69/1969

SCALE 1"=20'



B. M. 127.08 "R" IN RICHIE 2.5' W. OF E.L. OF WEST ST. NORTH CURB OF ALLEY.

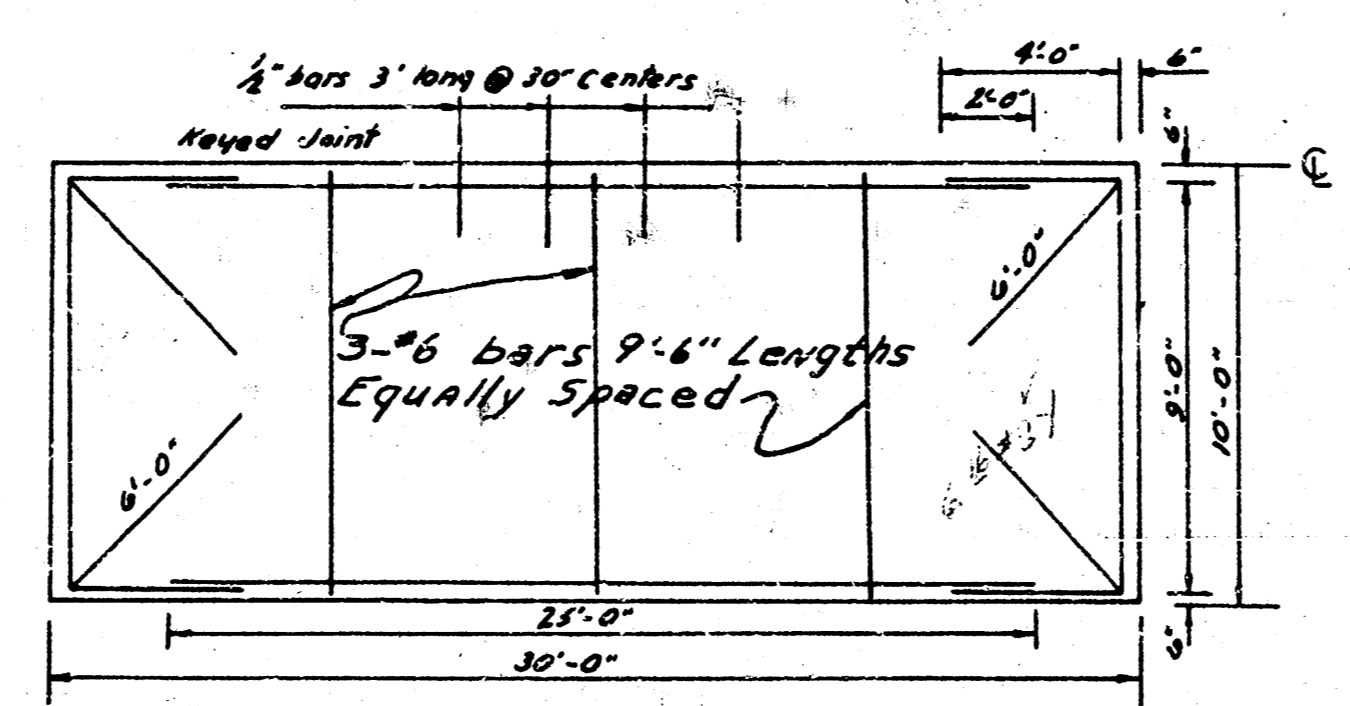
NOTE TO CONTR: SHAPE GROUND ON N. SIDE OF ALLEY TO MATCH EXISTING GROUND 8.0' N. OF THE N. L. OF THE ALLEY. FROM STA. 0+00 TO 3+00

NOTE TO CONTRACTOR: END CONST. AT STA. 3+00.

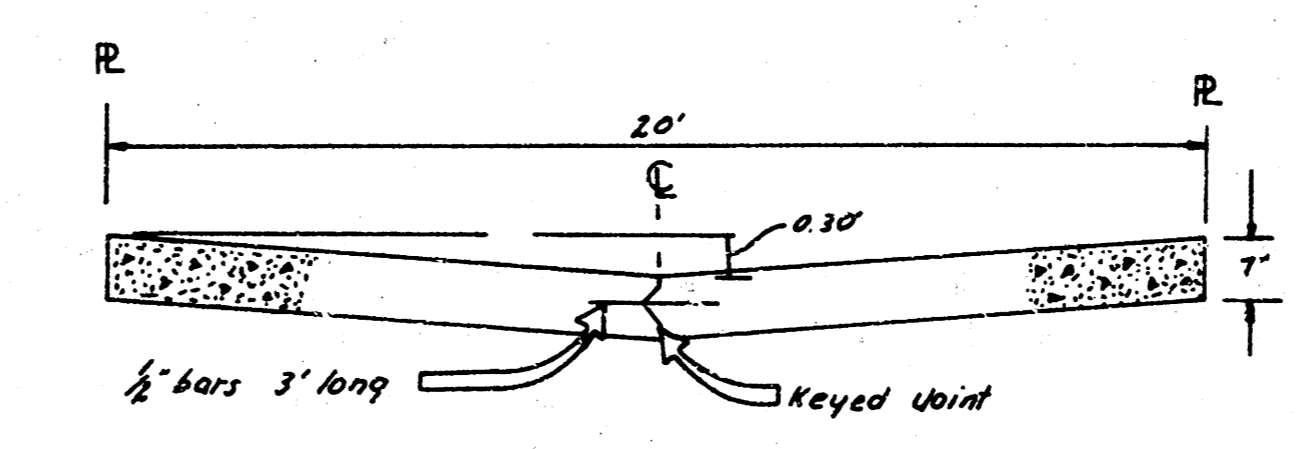
NOTE: Grade east to drain.

ESTIMATE OF QUANTITIES		
ITEM	UNIT	QUANT.
7" CONC. PAV'T.	S.Y.	667
EXCAVATION	CY	302
KEYED JOINT	L.F.	300
REINF. STEEL	LBS.	4,350
ASPHALT MAT REM.	S.Y.	63
SUBGRADE MODIFICATION C.Y.		111

NOTE TO CONTRACTOR
This project will be constructed under the supervision of the CITY ENGINEER and conforming to the SPECIFICATIONS of the CITY OF WICHITA. The CONTRACTOR will reimburse the City at \$10.00 per hour for all cost of Engineering, Plans, and Inspection.



STEEL PATTERN
All steel to be 1/2" except where noted



TYPICAL SECTION
no scale

"ALLEY" N. OF 13th, E.L. WEST ST., 300' E. OF WEST ST.
20' CONCRETE
CITY OF WICHITA, KANSAS
B.E. SMITH CITY ENGINEER
DATE: MAY 1969
PRIVATE PROJECT

