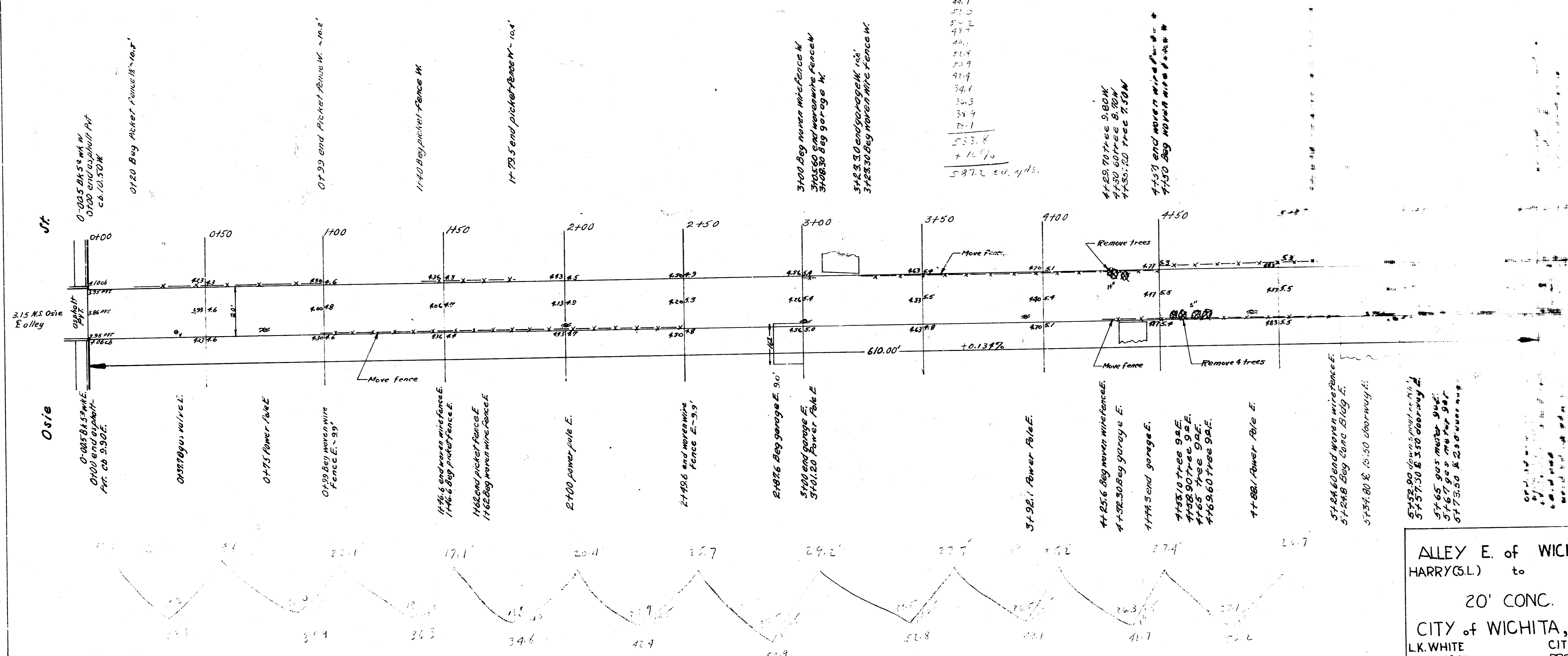


B.M. 10380 N. Rim M.H. E. Osie (alley)

100 W.S. alley



ALLEY E. of WICHITA ST
 HARRY (GL) to OSIE (GL)
 20' CONC.
 CITY of WICHITA, KANS.
 L.K. WHITE CITY ENGINEER
 JULY 1949 PROJ. NO. C-19-128

4 3 3