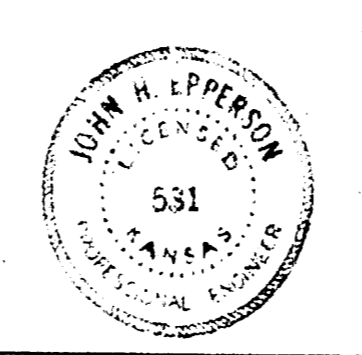
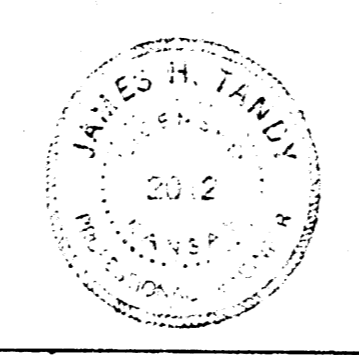
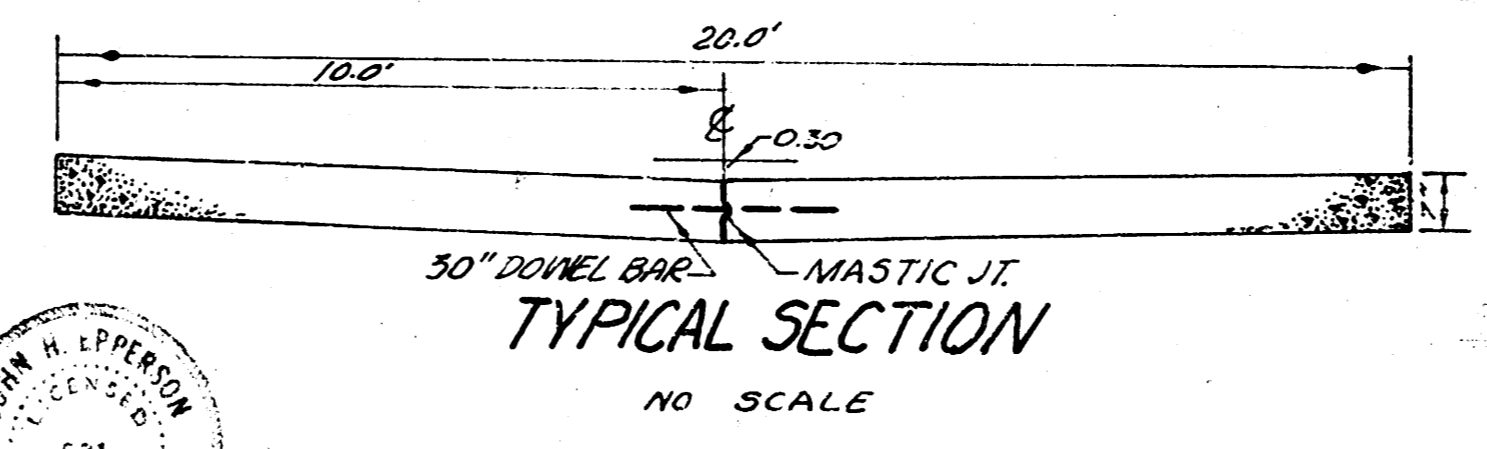
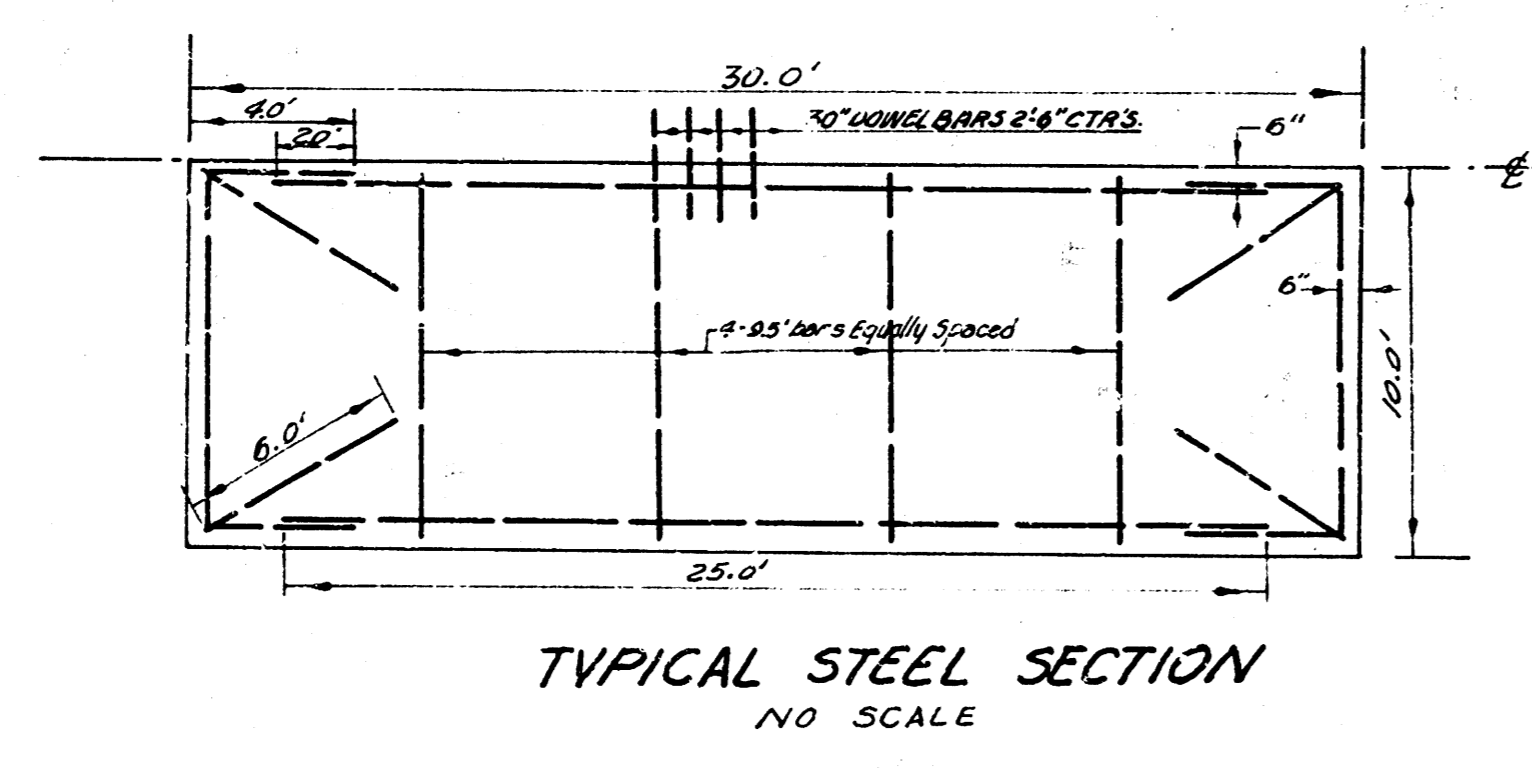
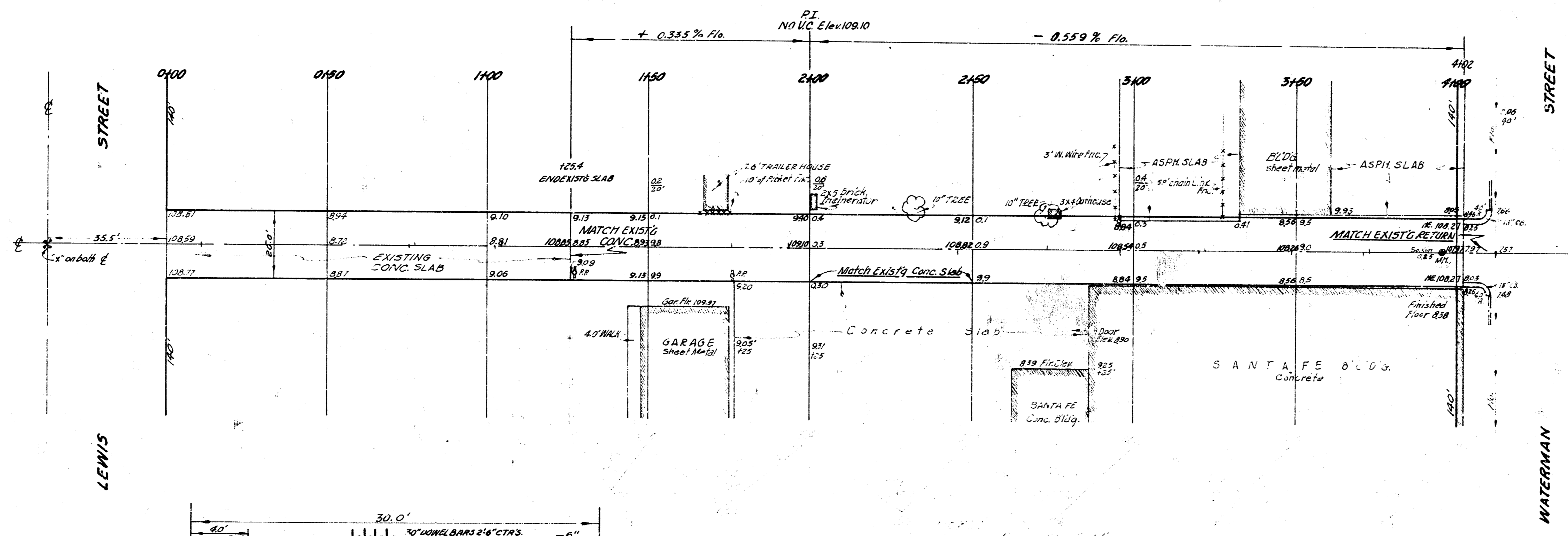


STEP  
 BM 110.28 SEC. 13<sup>th</sup> GAMM APTS. J.P. DEWEY  
 S.M. 12885 12<sup>th</sup> in. Ritchie & W.K. E. 11<sup>th</sup> E. of Lehigh Alley in Lewis bet Emporia & Topeka  
 BASE LINE @ 20' ALLEY N. of S.



ALLEY BET. EMPORIA & TOPEKA  
 S.L. LOT 98, EMPORIA TO S.L. WATERMAN  
 ARE ENGLISH 3RD ADDN.  
 20.0'-7" CONG.  
 CITY OF WICHITA, KANSAS  
 BE SMITH CITY ENGINEER  
 DATE JAN. 1958 PROJ. NO. C17-145