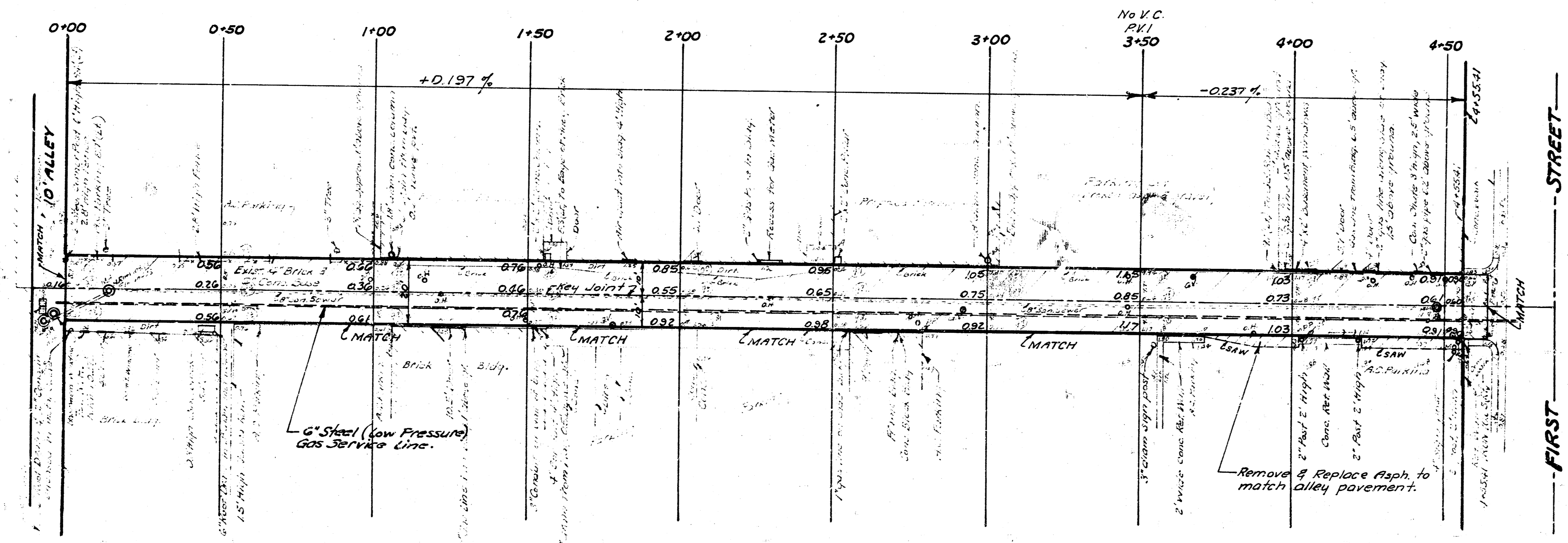
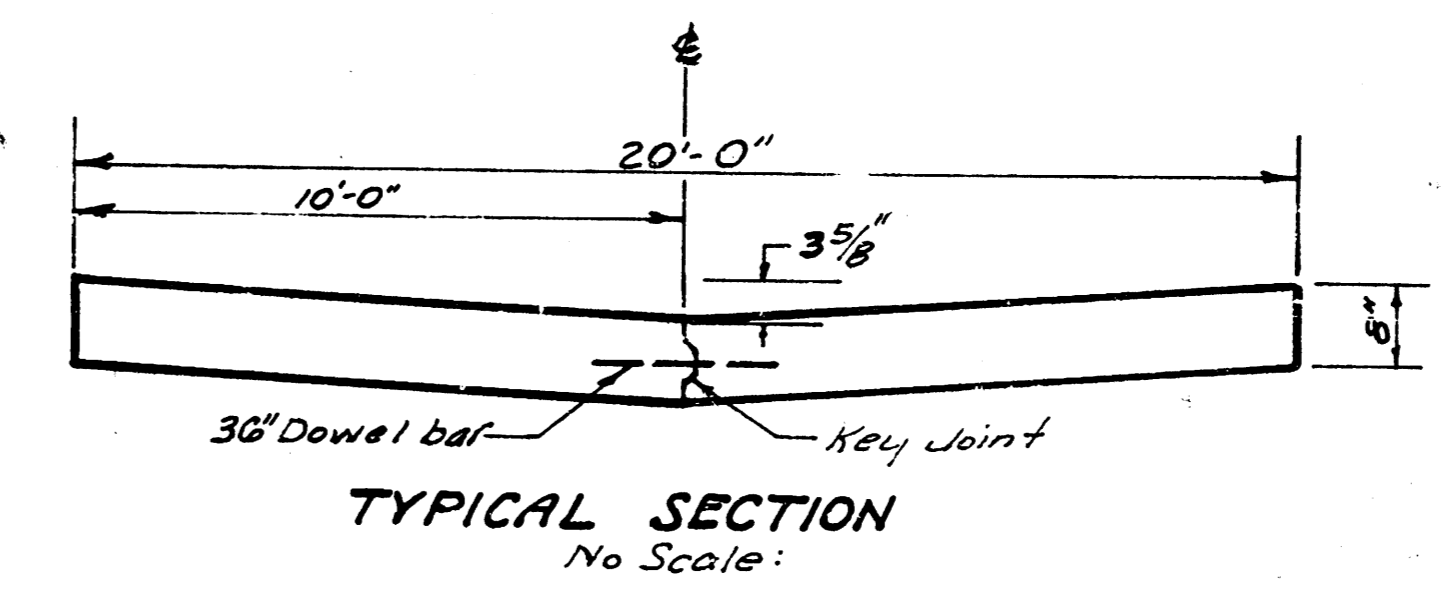


Scale: 1" = 20'

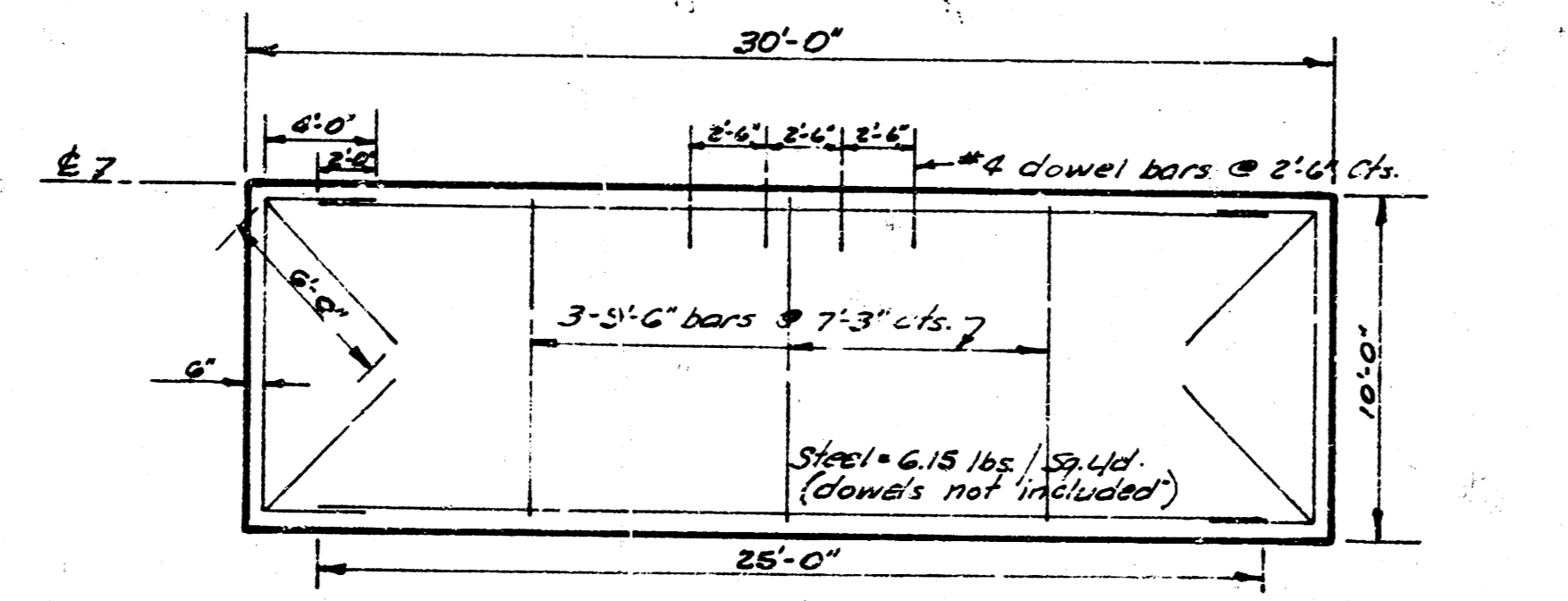
B.M. 112.07 N.E. corner retaining wall  
15' E. of E.L. Alley, S.L. First Street.

**NOTE:**  
Field Engt. to take X-sections after the existing brick pavement is removed.

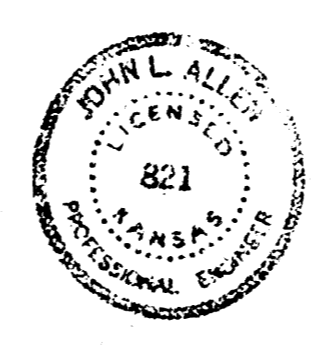
**NOTE:**  
The City Sewer Maintenance Division is to seal off O.H.'s (observation holes) to the City 8" San Sewer. The paving contractor is to adjust all other O.H.'s or clean outs.



**ESTIMATED QUANTITIES**  
50 Cu. Yds. Excavation  
250 Cu. Yds. Comp. Fill  
37.5 Cu. Yds. Borrow Exc.



**STEEL PATTERN**  
No Scale:  
All reinf. steel to be #6 bars except dowel bars.



**ALLEY between TOPEKA and EMPORIA**  
S.L. First St. to N.L. Alley  
NORTH of DOUGLAS  
8" Concrete - Repave 20'  
R.W. LINN CITY ENGINEER  
CITY OF WICHITA KANSAS  
Date: Nov. 1971  
Project No. DAKA 571025