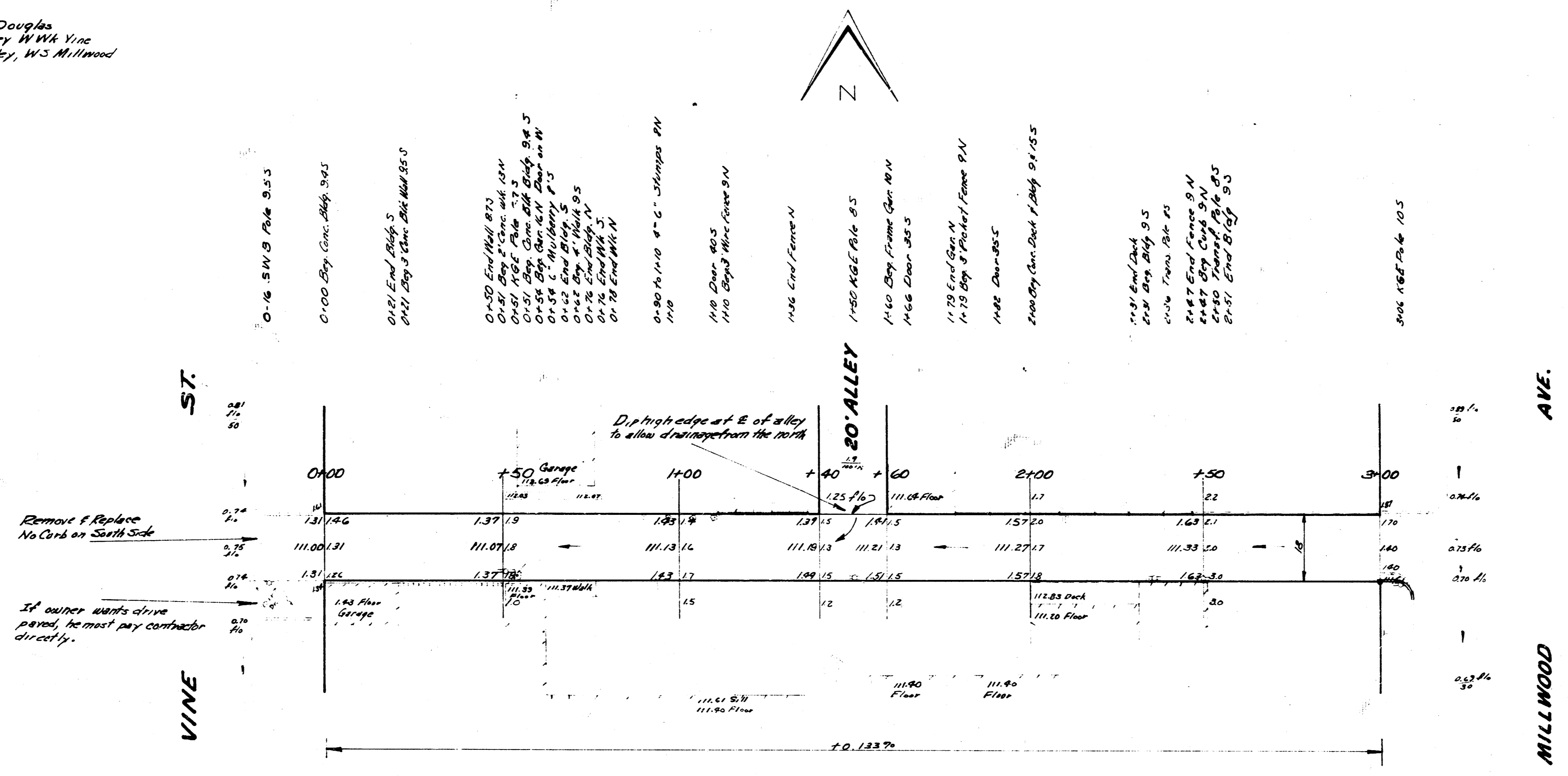


B.M. 110.85 Iron in Thimble E Vine, S.L. Douglas
 B.M. 111.53 K in Kicker S.W. of W.L. Riley W.W. Vine
 C.M. 112.36 S in Street, ft. of W.L. 55 of Alley, W.S. Millwood

OWNER
 C.V.
 P.S.
 O.S.



4.5' - 1/2" in. measured
 R.E. 12/3/54



ALLEY IN DOUGLAS
 EL VINE TO WL MILLWOOD
 6" CONCRETE - 18' WIDE
 CITY OF WICHITA
 B. SMITH CITY ENGINEER
 MARCH 1954 Proj. C13-185