

Survey A/C 503
 Plan, Location
 Ex. Location
 Checked

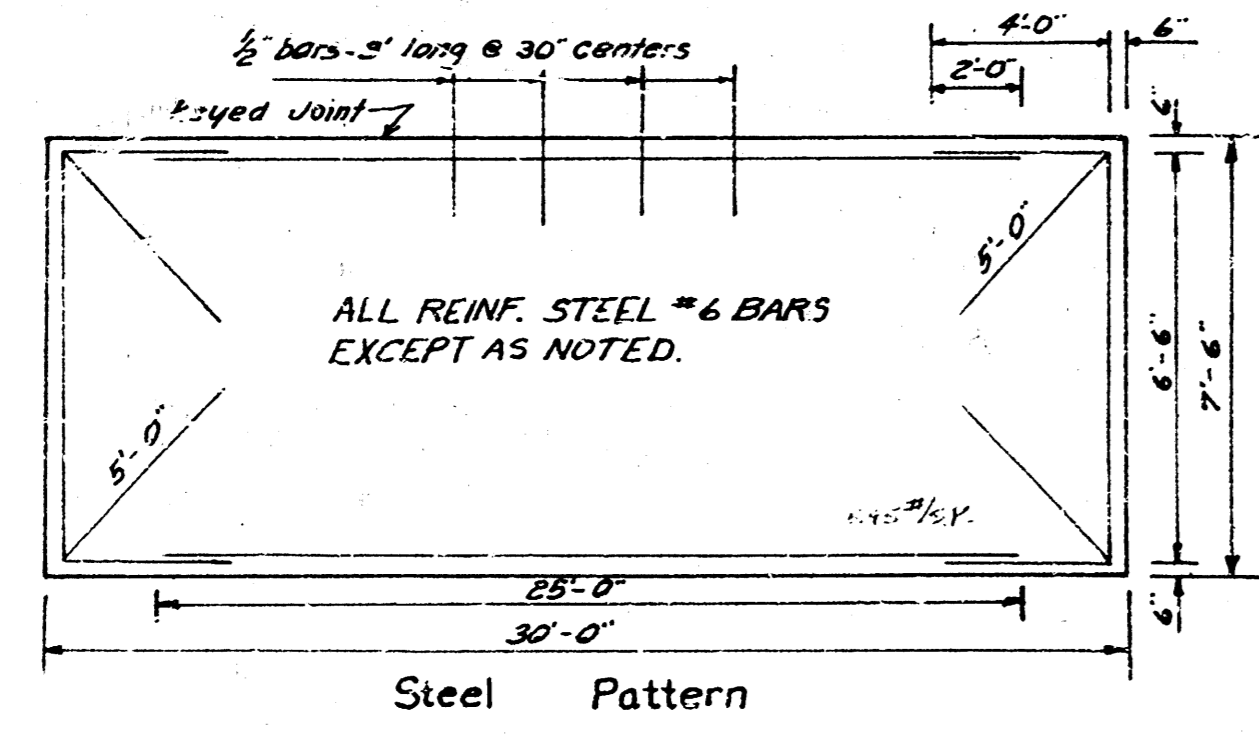
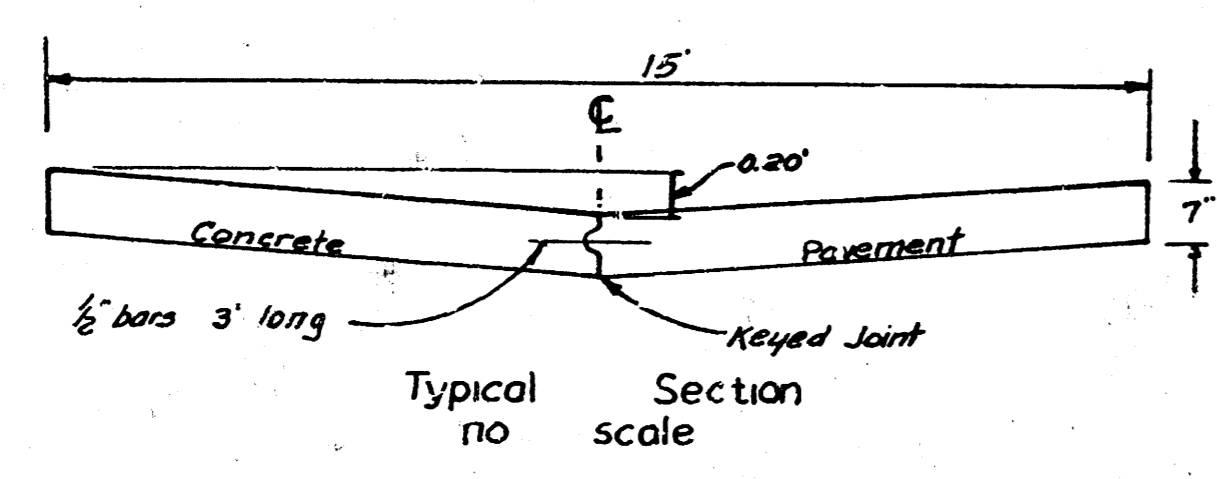
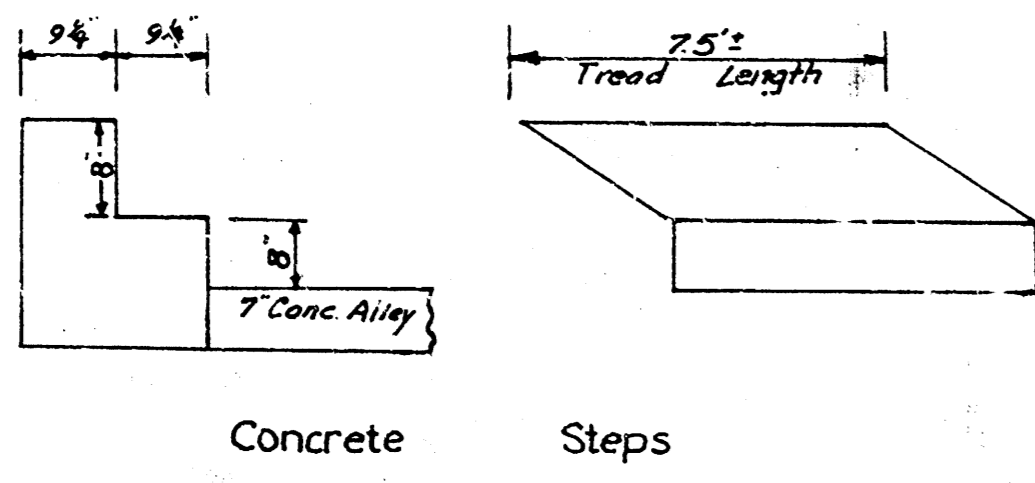
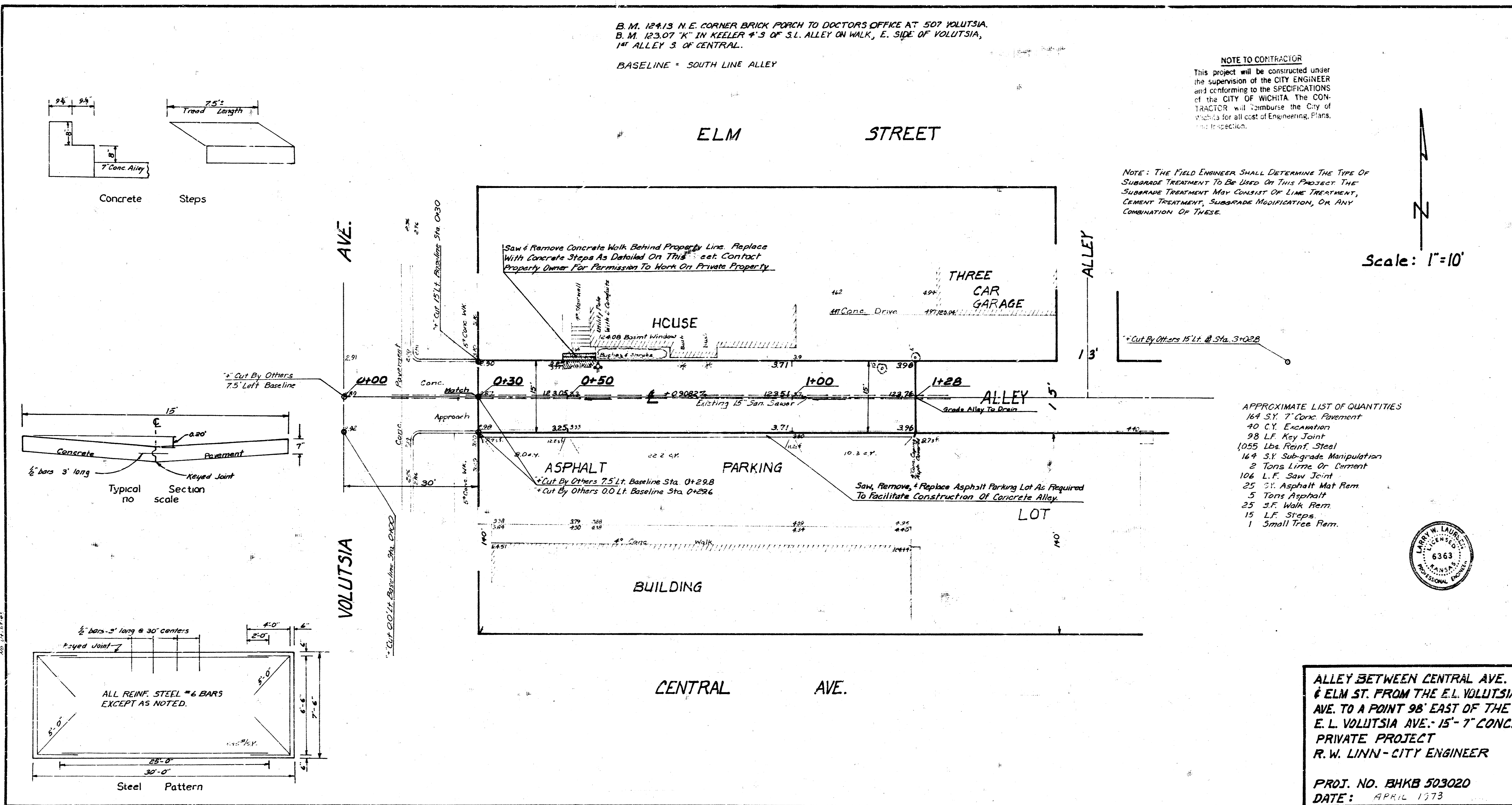
B. M. 124.13 N. E. CORNER BRICK PORCH TO DOCTORS OFFICE AT 507 VOLUTSIA.
 B. M. 123.07 "K" IN KEELER 4'S OF S.L. ALLEY ON WALK, E. SIDE OF VOLUTSIA,
 1ST ALLEY S. OF CENTRAL.

BASELINE = SOUTH LINE ALLEY

NOTE TO CONTRACTOR
 This project will be constructed under the supervision of the CITY ENGINEER and conforming to the SPECIFICATIONS of the CITY OF WICHITA. The CONTRACTOR will reimburse the City of Wichita for all cost of Engineering, Plans, and Inspection.

NOTE: THE FIELD ENGINEER SHALL DETERMINE THE TYPE OF SUBGRADE TREATMENT TO BE USED ON THIS PROJECT. THE SUBGRADE TREATMENT MAY CONSIST OF LIME TREATMENT, CEMENT TREATMENT, SUBGRADE MODIFICATION, OR ANY COMBINATION OF THESE.

Scale: 1"=10'



- APPROXIMATE LIST OF QUANTITIES
- 164 S.Y. 7" Conc. Pavement
 - 90 C.Y. Excavation
 - 98 L.F. Key Joint
 - 1055 Lbs. Reinf. Steel
 - 164 S.Y. Sub-grade Manipulation
 - 2 Tons Lime Or Cement
 - 106 L.F. Saw Joint
 - 25 S.Y. Asphalt Mat Rem
 - 5 Tons Asphalt
 - 25 S.F. Walk Rem
 - 15 L.F. Steps
 - 1 Small Tree Rem.



ALLEY BETWEEN CENTRAL AVE.
 & ELM ST. FROM THE E.L. VOLUTSIA
 AVE. TO A POINT 98' EAST OF THE
 E. L. VOLUTSIA AVE. - 15'-7" CONC.
 PRIVATE PROJECT
 R. W. LINN - CITY ENGINEER
 PROJ. NO. BHKB 503020
 DATE: APRIL 1973