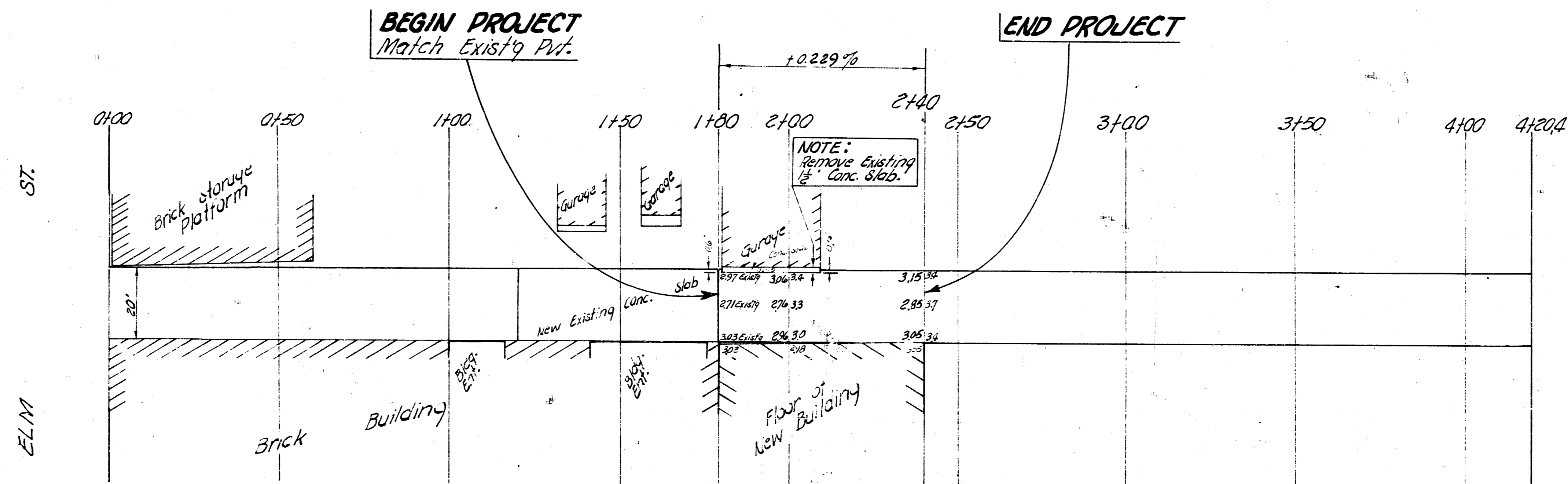
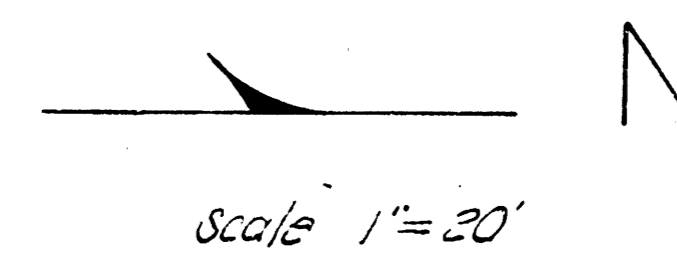
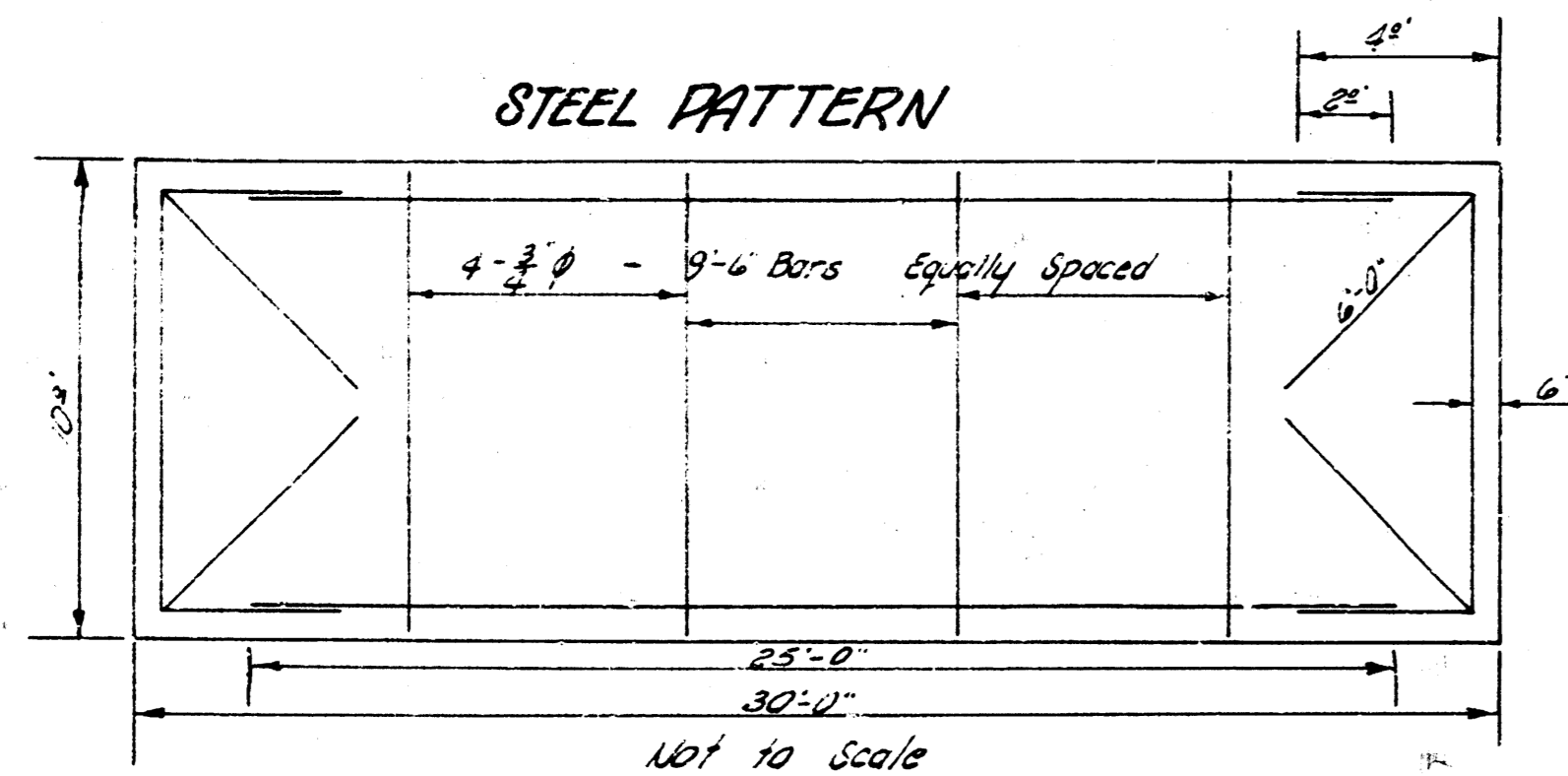


B.M. 112.84 "V" in Volmer EL Alley Center of walk.
 B.M. 113.02 "C" in Carter & walk east NE corner Topeka & Elm.



NOTE TO CONTRACTOR

This project will be completed under the supervision of the City Engineer and contractor. The contractor and the City Engineer will release the City of Wichita for all cost of grading, plans, and inspection.



ALLEY
 TOPEKA - EMPORIA
 180' N. OF N. L. ELM TO 240' N. OF N. L. ELM
 7" CONC. - 20' WIDE
 CITY OF WICHITA, KANS.
 B. E. SMITH - CITY ENGINEER
 NOV. 14, 1955, PRIVATE JOB



38* J.R.H. #9