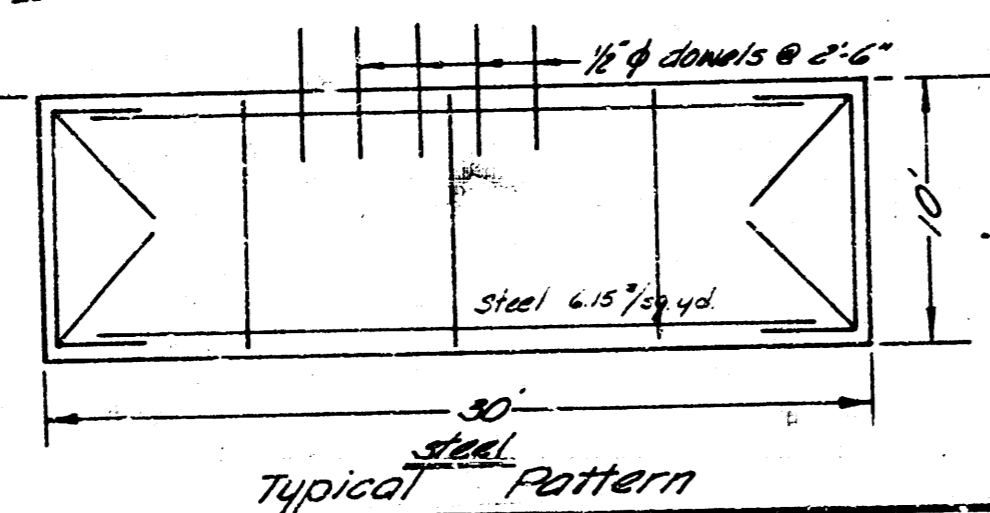
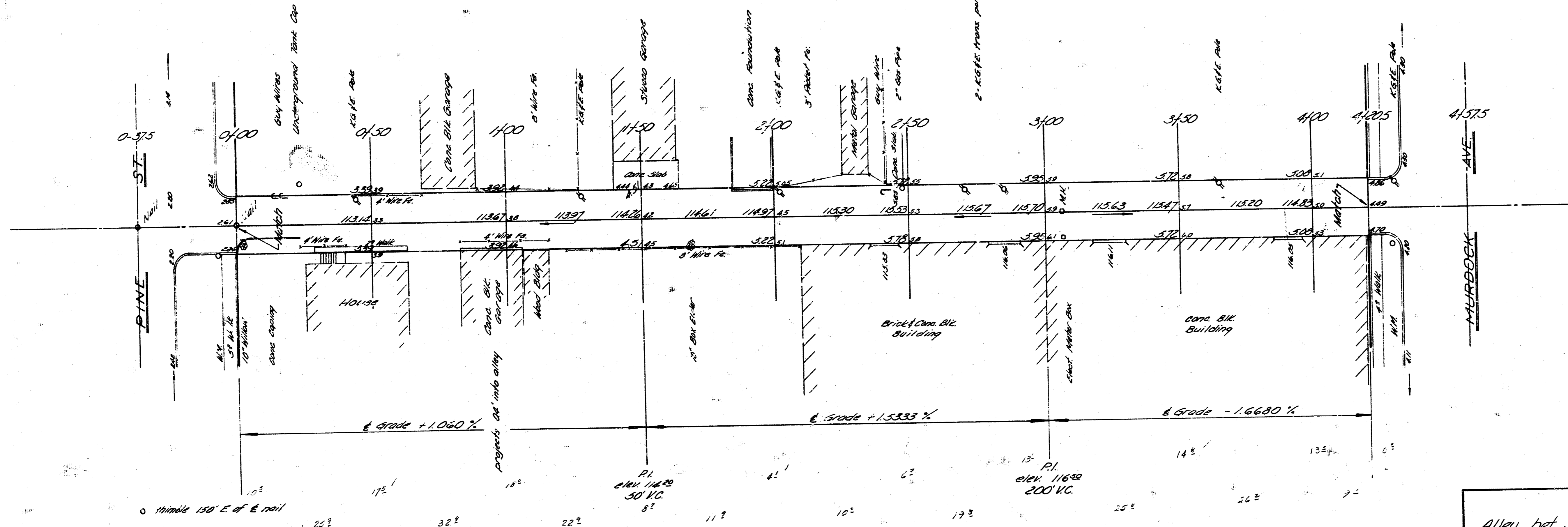
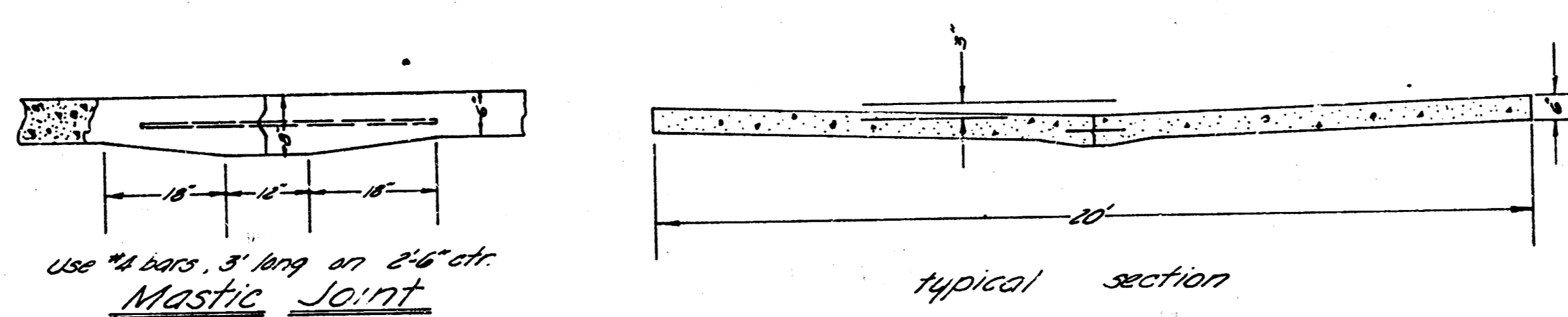
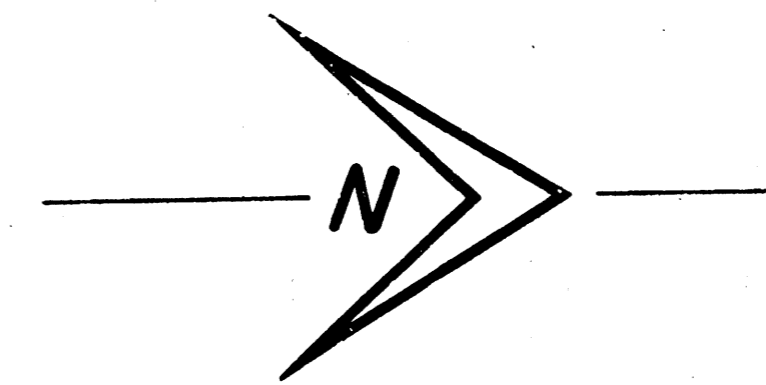
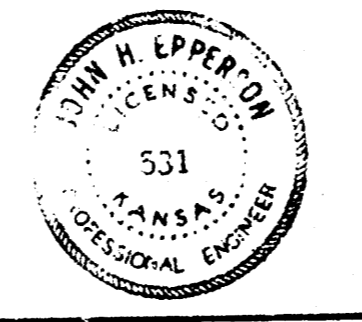


B.M. 11302 "R" in RAHWIT Pt. of N.E. S., S.E. Cor. St. Francis & Murdock.
 B.M. 11310 "B" in Globe Wks. of Alley N. of Santa Fe, S.L. Pine.



Excavation
 196.0
 12.6
 202.4 cu yd



Alley bet. St. Francis & Santa Fe
 N.L. Pine to S.L. Murdock
20'-6" CONC.
 City of Wichita, Kans.
 B.E. Smith City Engineer
 Date: May 1940, Proj. No. C19-212