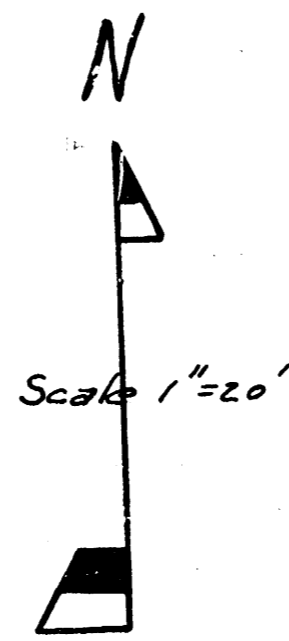
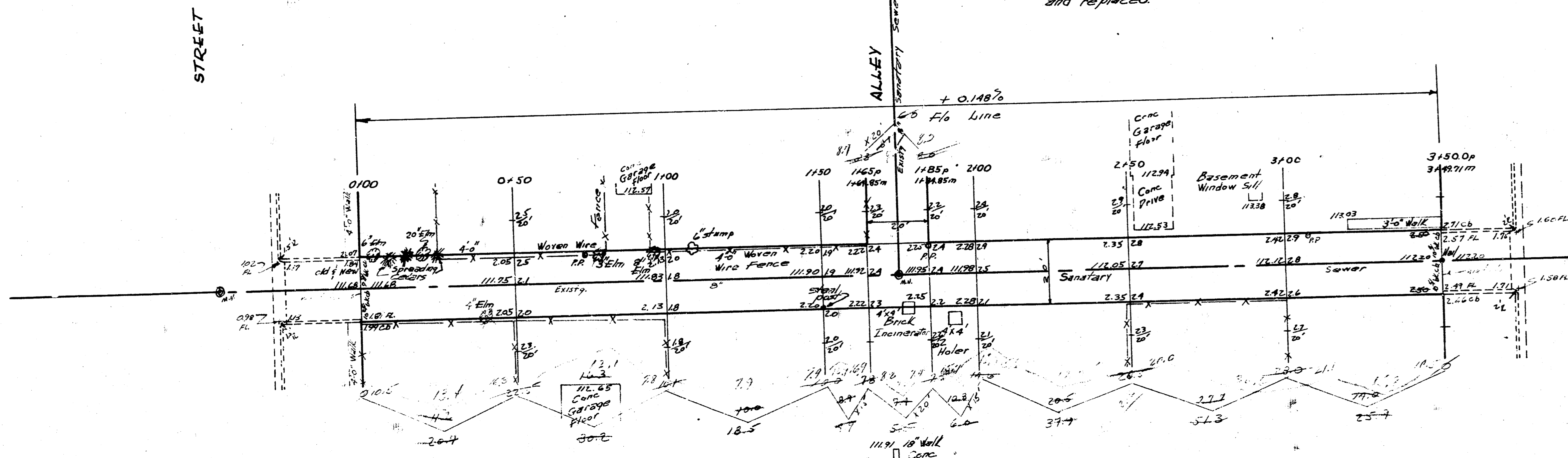


Deline C. of Alley Going East
 B.M. 60" Spike E.S. H.L.P. W.S. Sedgwick 160' N. of N.W. Maple 112.30
 B.M. Brass rod in conc. post N.E. Meridian & Maple 111.35



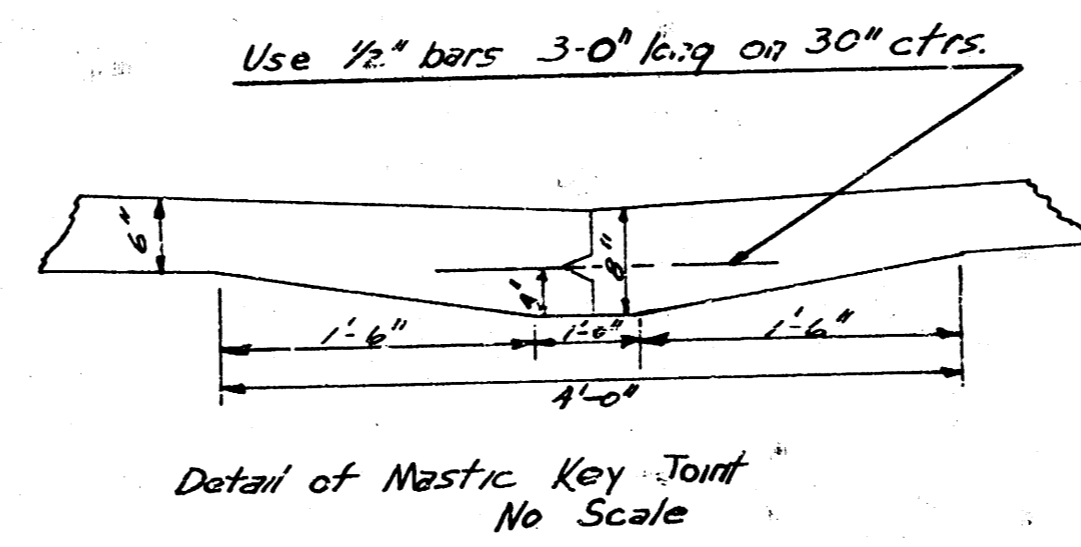
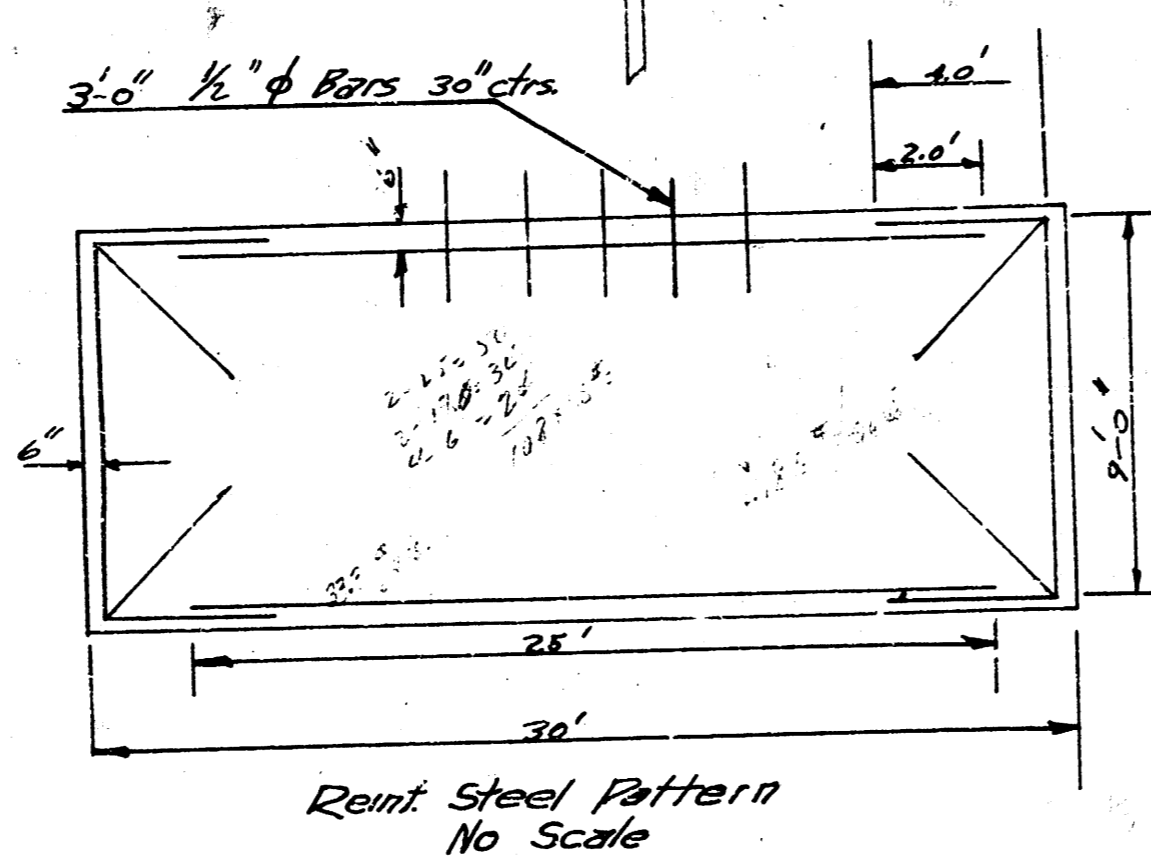
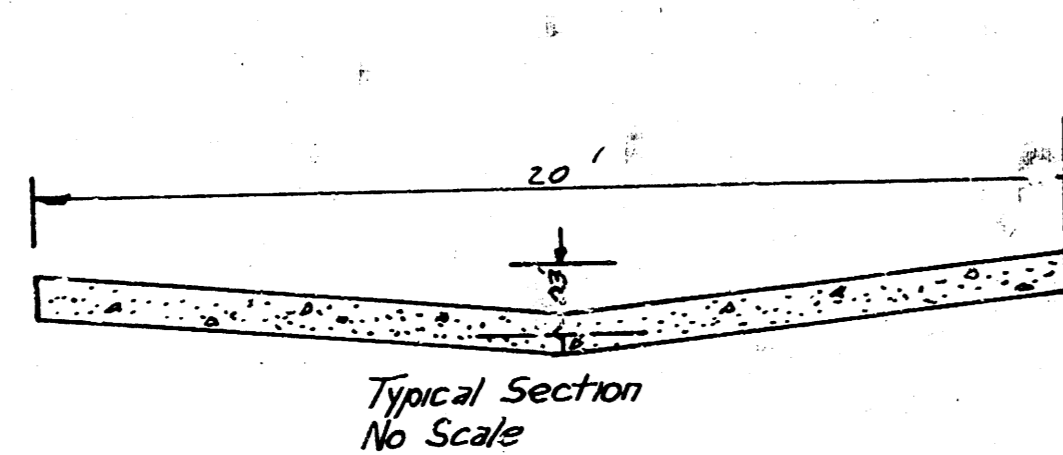
Note: All bushes & trees whose dia is 3" or less will be classified as part of excavation

Note to Field Engineer: All irons to be driven 6" below finished grade or trees taken and replaced.



EXCAVATION

City	6.0	Prop	200.9
+ 10%	6.6	+ 10%	221.0
TOTAL	6.6	TOTAL	221.0



ALLEY - 1st NO. of MAPLE
 E.A. SEDGWICK - W.L. S. CLAIR
 20' CONC 6"
 CITY OF WICHITA, KANSAS
 B.E. SMITH CITY ENGINEER
 DATE: AUG. 1958 PROJ NO C18-17

