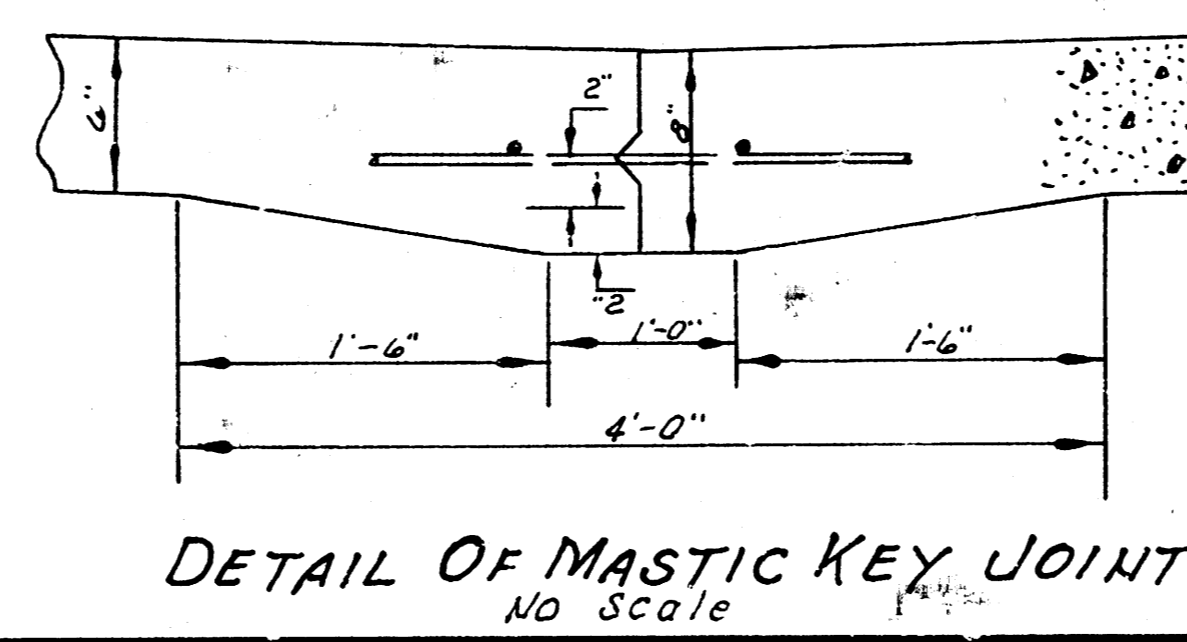
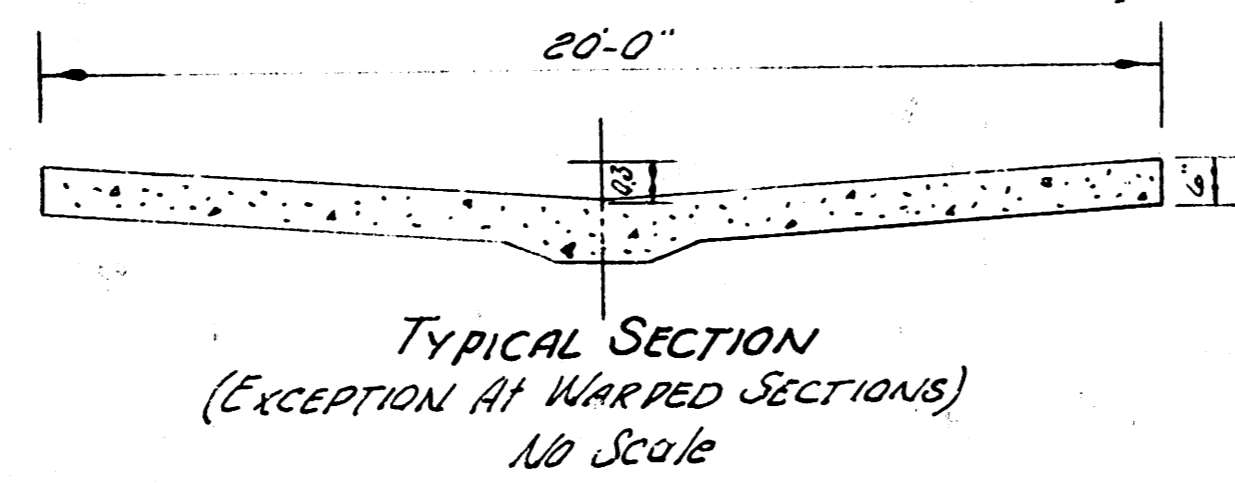
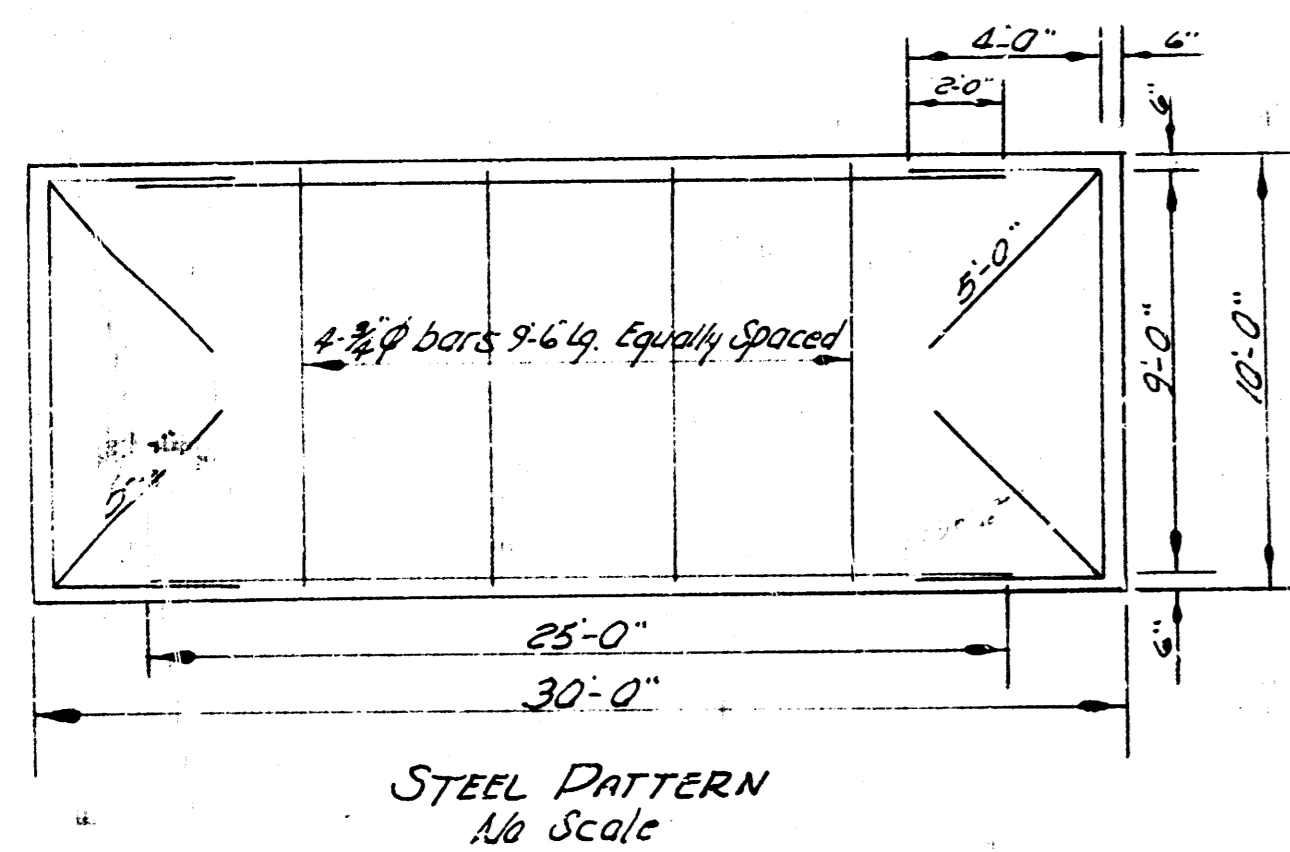
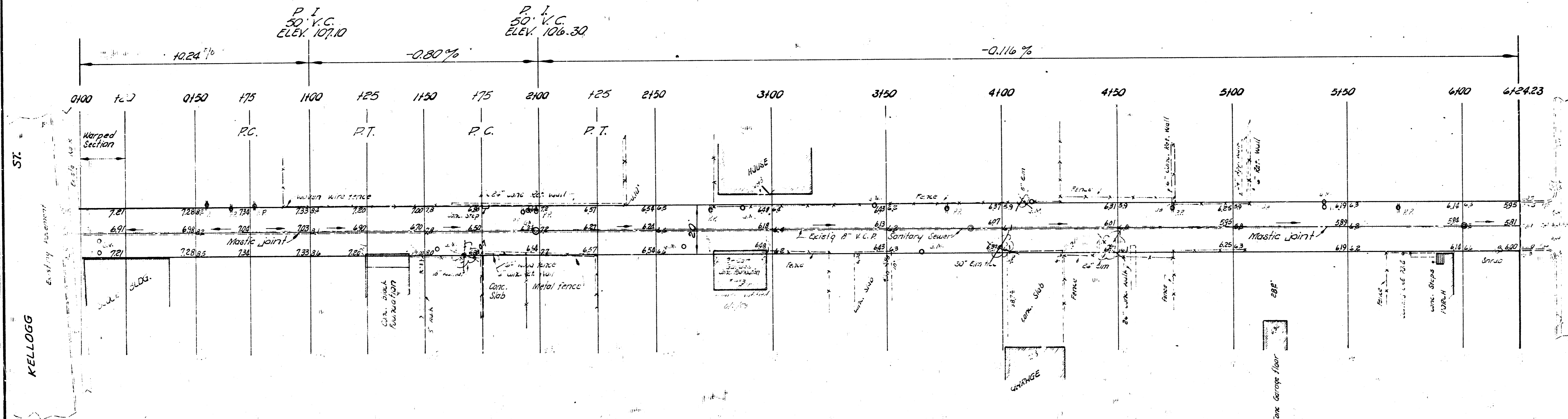


B. N. 108.89 Sq. Spike NE Side H.L.P. 10.6' L.A. Sta. 0+77.
 B. N. 103.09 S.E. cor. 3x7 Conc. Slab #453 So. Hydraulic.

TOTAL ESTIMATE
 CITY PROP
 30 4500
 30 107 287
 30 4172 10100

SCALE 1" = 20'

Stationing on S Alley.



ALLEY
 WEST OF HYDRAULIC
 S. LEWIS TO N. KELLOGG
 6" CONC 20"
 CITY OF WICHITA, KANSAS
 B. E. SMITH CITY ENGINEER
 MAY 1958 PROJ. NO. C17-51