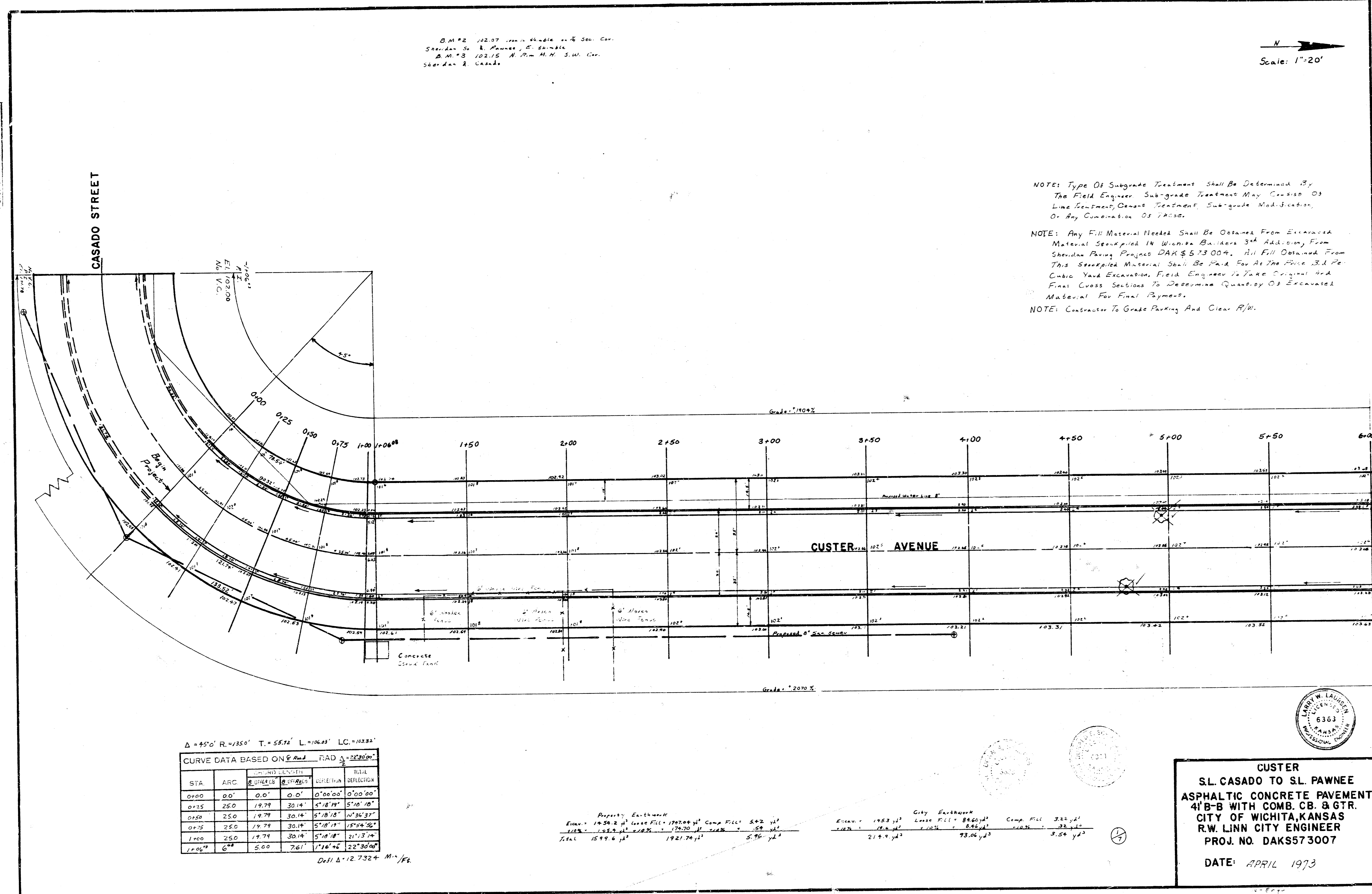


D.M.#2 102.07 102.07 102.07 102.07
 S. M. # 3 102.15 102.15 102.15 102.15
 S. M. # 3 102.15 102.15 102.15 102.15

N
 Scale: 1"=20'

Runoff A.A. 1973
 City Engineer
 Checked



NOTE: Type Of Subgrade Treatment Shall Be Determined By The Field Engineer. Sub-grade Treatment May Consist Of Line Treatment, Channel Treatment, Subgrade Modification, Or Any Combination Of These.

NOTE: Any Fill Material Needed Shall Be Obtained From Excavated Material Stockpiled In Wichita Builders 3rd Addition From Sheridan Pump Project DAK 573004. All Fill Obtained From This Stockpile Material Shall Be Paid For At The Price Bid Per Cubic Yard Excavation. Field Engineer To Take Original And Final Cross Sections To Determine Quantity Of Excavated Material For Final Payment.

NOTE: Contractor To Grade Parking And Clear R/W.

$\Delta = 95^{\circ}0'$ $R = 1350'$ $T = 557.2'$ $L = 106.83'$ $LC = 103.82'$

CURVE DATA BASED ON Δ AND R

STA.	ARC	CHORD	CHORD BEHIND	CHORD AHEAD	TANGENT	TOTAL DEFLECTION
0+00	0.0'	0.0'	0.0'	0.0'	0.0000°	0.0000°
0+25	25.0'	19.79'	30.14'	5.18 18"	5.18 18"	5.18 18"
0+50	25.0'	19.79'	30.14'	5.18 18"	10.36 36"	10.36 36"
0+75	25.0'	19.79'	30.14'	5.18 18"	15.54 54"	15.54 54"
1+00	25.0'	19.79'	30.14'	5.18 18"	20.72 72"	20.72 72"
1+06.83	6.83'	5.00'	7.61'	1.16 42"	22.30 42"	22.30 42"

Dist. $\Delta = 12.7324$ Miles

Property Earthwork

Excav.	1934.2 yd ³	Comp. Fill	542.4 yd ³
Total	1599.6 yd ³	1921.74 yd ³	5.76 yd ³

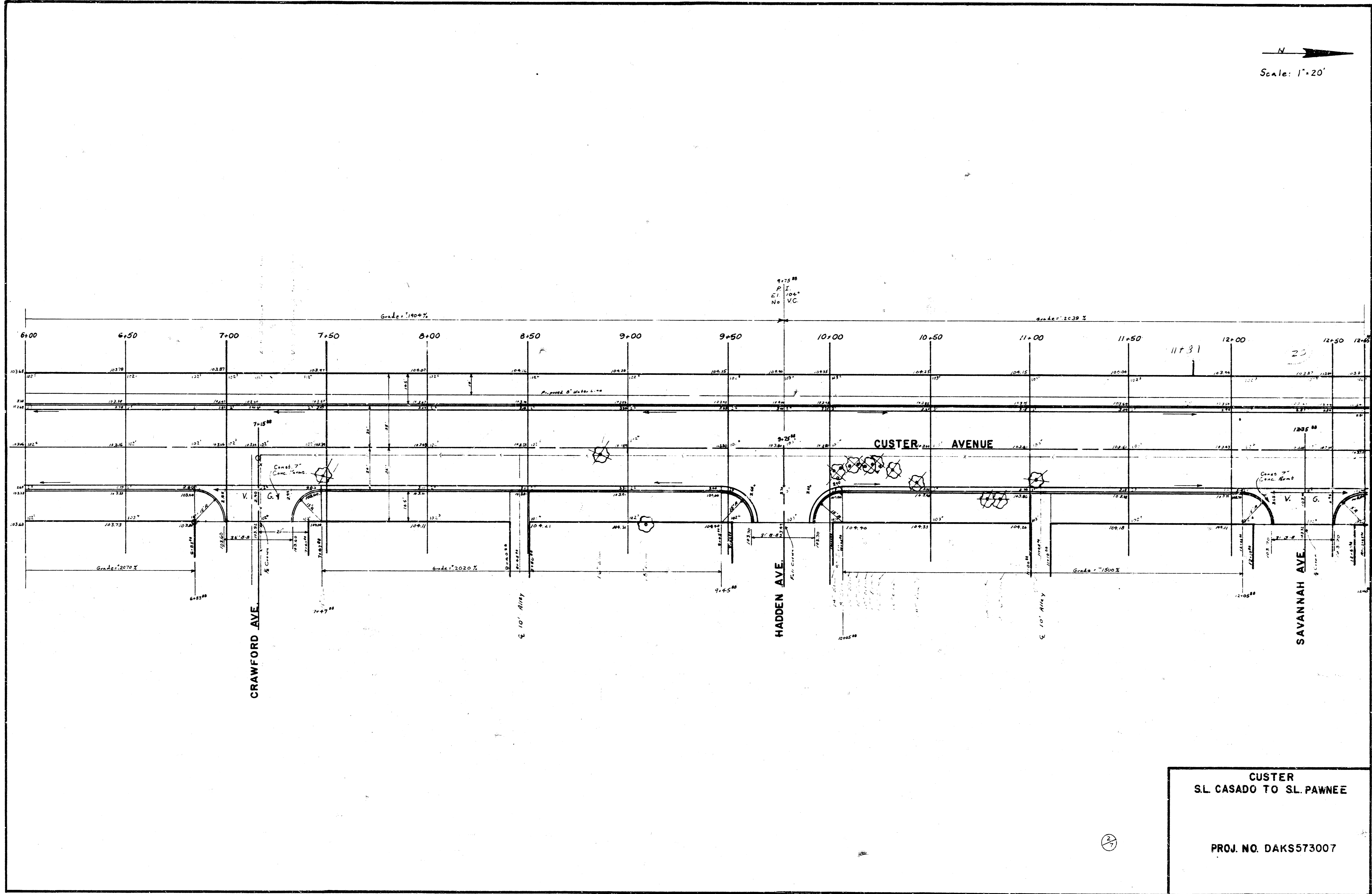
City Earthwork

Excav.	1933 yd ³	Comp. Fill	322 yd ³
Total	1611 yd ³	78.06 yd ³	3.54 yd ³



CUSTER
 S.L. CASADO TO S.L. PAWNEE
 ASPHALTIC CONCRETE PAVEMENT
 4' B-B WITH COMB. CB. & GTR.
 CITY OF WICHITA, KANSAS
 R.W. LINN CITY ENGINEER
 PROJ. NO. DAKS573007
 DATE: APRIL 1973

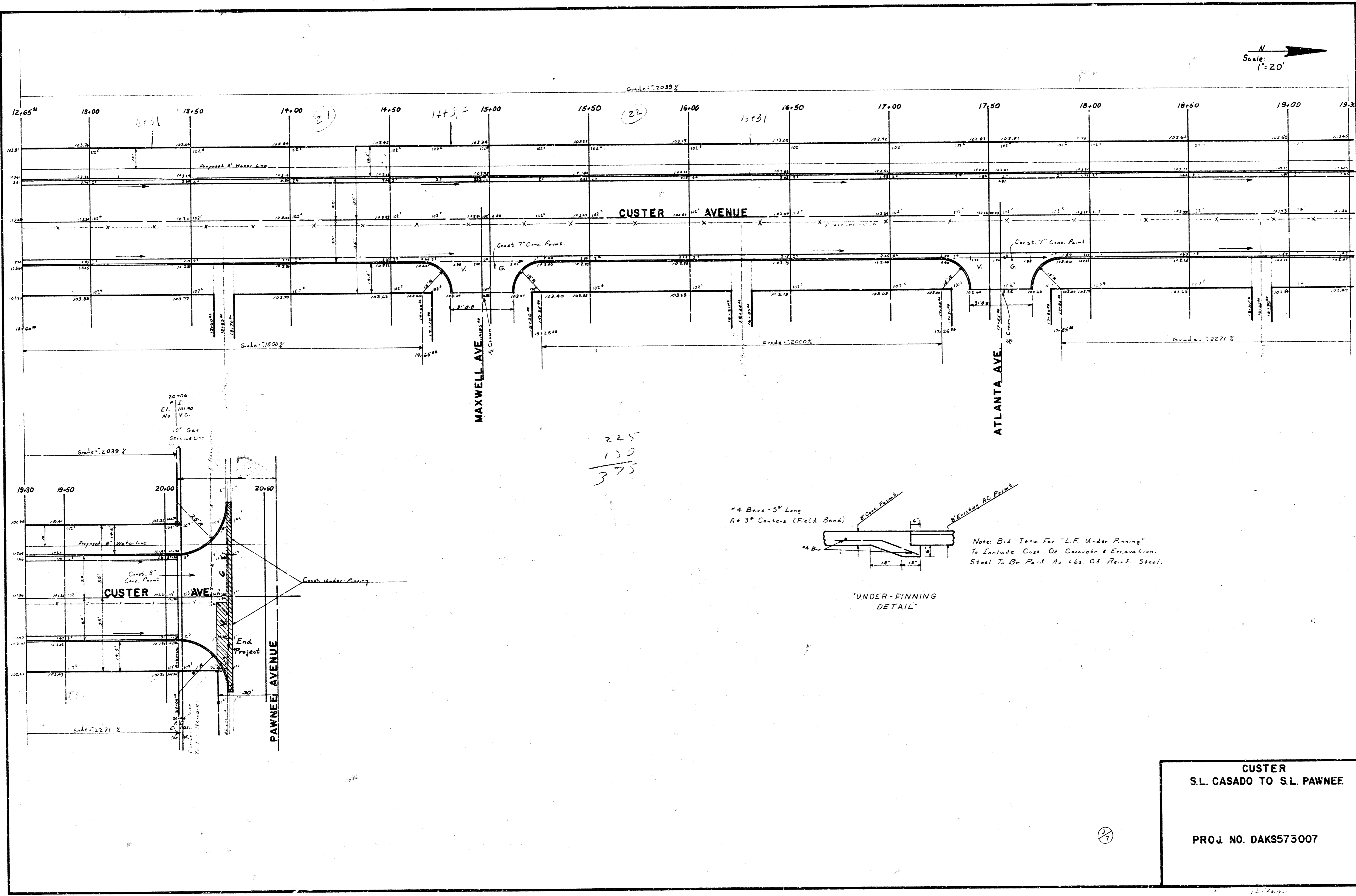
N
Scale: 1"=20'



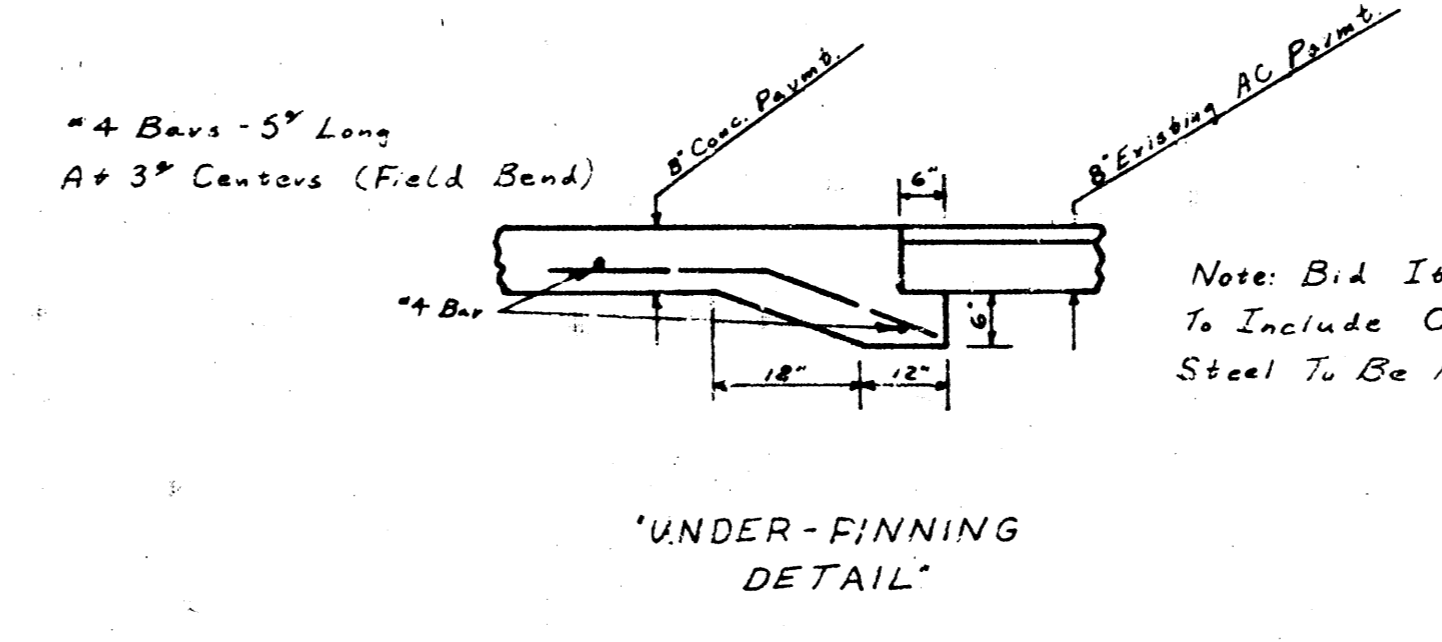
CUSTER
SL. CASADO TO SL. PAWNEE

PROJ. NO. DAKS573007

N
Scale: 1"=20'



225
130
375



CUSTER
S.L. CASADO TO S.L. PAWNEE

PROJ. NO. DAKS573007

21