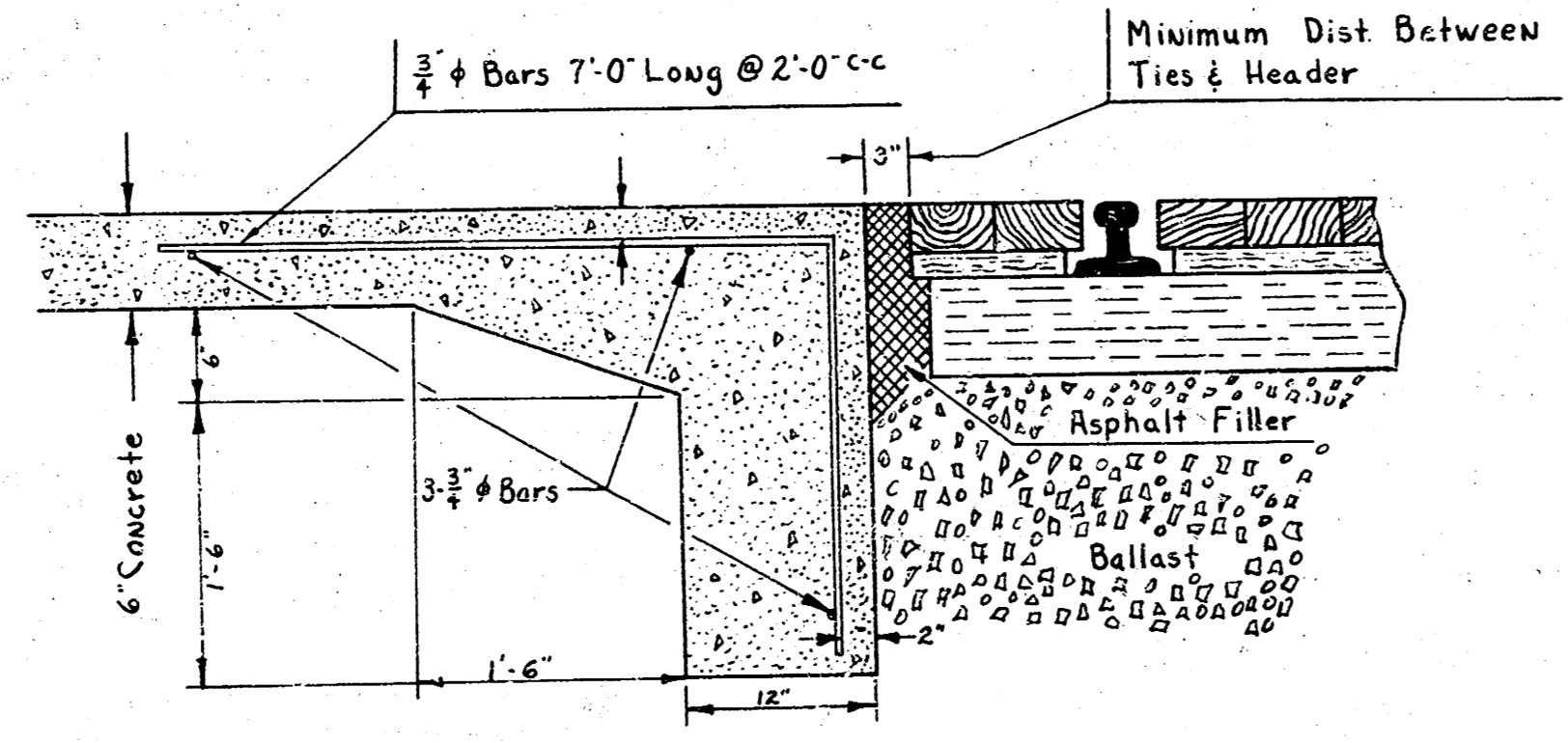
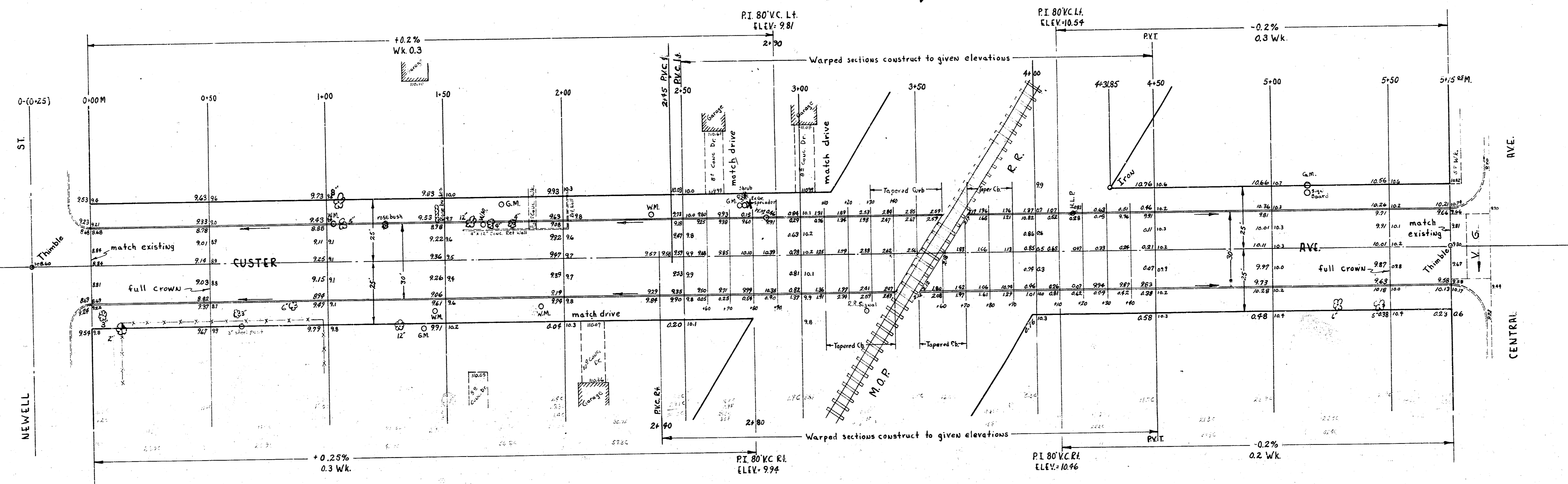
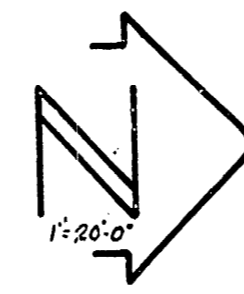
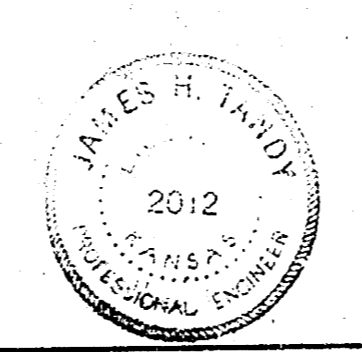


BM. 11120 "T" in Tray Fire Plug S.E. Cor. Custer & Newell  
 Stationing North On Custer



DETAIL OF CONCRETE HEADER FOR R.R. CROSSING  
 Not to Scale

NOTE TO FIELD ENGINEER:  
 Run 'X' Sections To Determine  
 Fill @ R.R. Crossing



Excavation	City
3% 9 Cu Yds Cut	005-4
3% 4	100-11
933.8 Cu Yds Cut	
20 Cu Yds Fill	
27 Cu Yds Fill	
20.0 Cu Yds Fill @ R.R.	
277.4 Cu Yds Fill	

CUSTER AVE.  
 N.L. NEWELL to S.L. CENTRAL  
 30" CONC. & CB.  
**CITY OF WICHITA, KANSAS**  
 B.E. SMITH CITY ENGINEER  
 DATE: AUG. 1958 PROJ. NO. C18-45

Checked by: [Name] 11/25/57  
 Drawn by: [Name] 11/24/57  
 Supervised by: [Name]