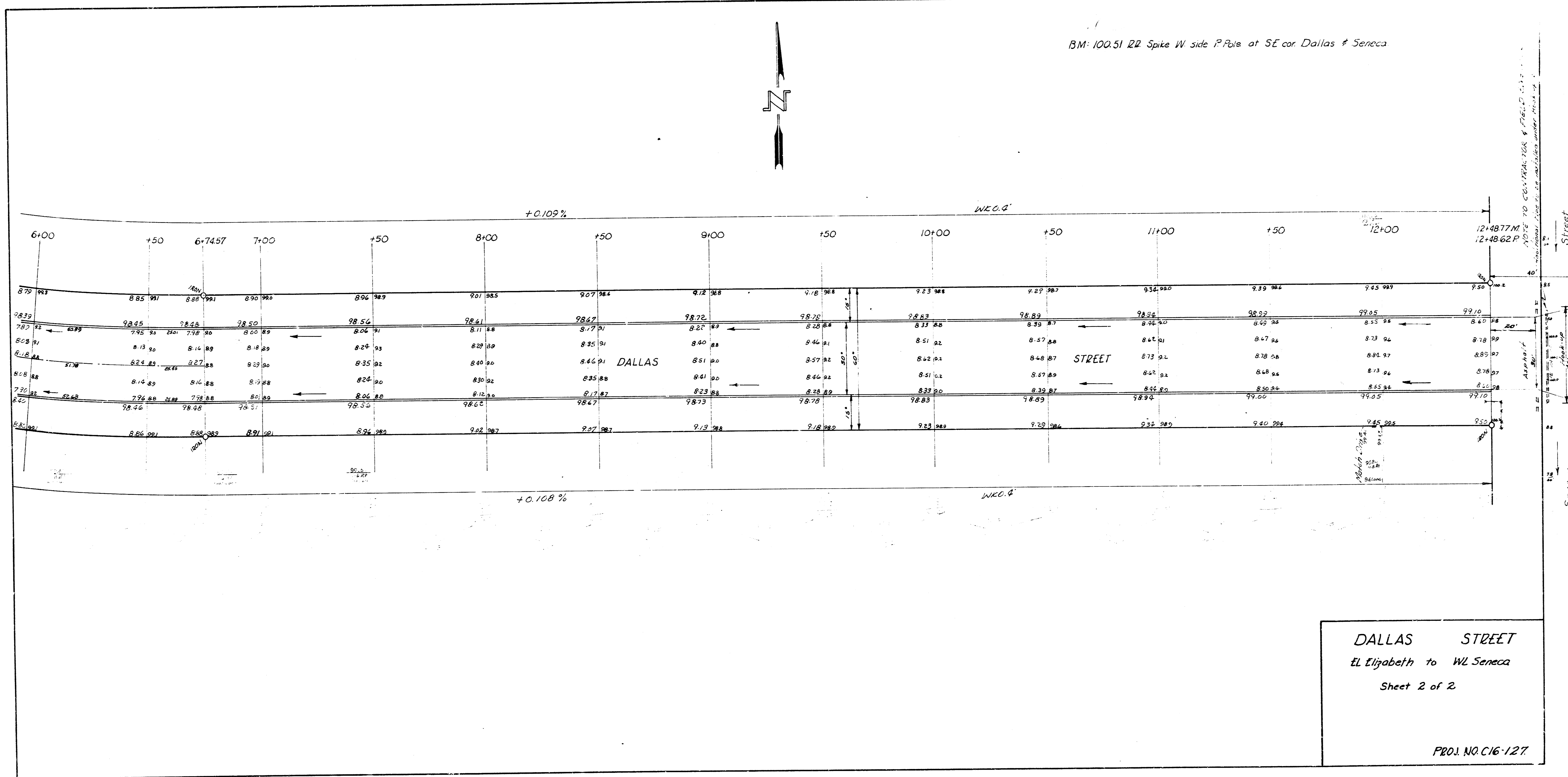
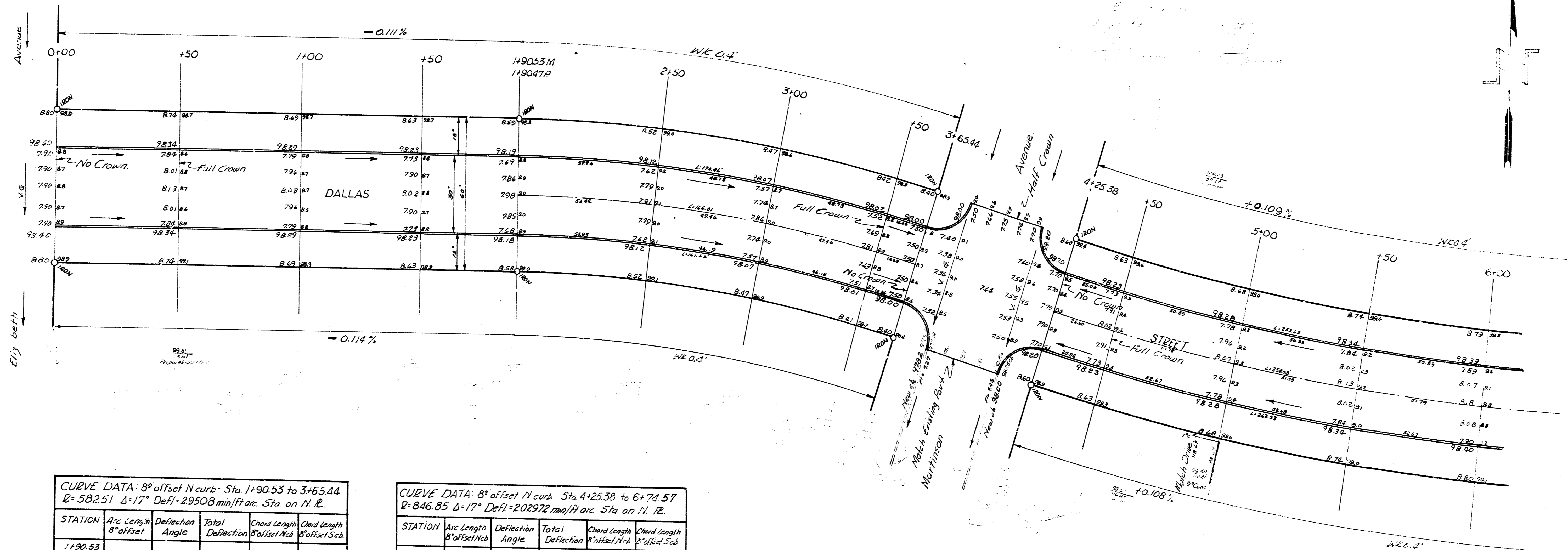




BM: 100.51 RR Spike W side P.R. at SE cor. Dallas & Seneca



BM: 97.86 in Globe top Wcb Martinson at St. Dallas.  
 Base line of Stationing on North Property Line.



CURVE DATA: 8° offset N curb Sta. 1+90.53 to 3+65.44  
 R=582.51 Δ=17° Defl=29508 min/ft arc Sta. on N.R.

STATION	Arc Length 8' offset	Deflection Angle	Total Deflection	Chord Length 8' offset	Chord Length 8' offset
1+90.53					
2+00	935	0° 27' 35"	0° 27' 35"	934	940
+50	49.41	2° 25' 48"	2° 53' 23"	49.40	45.50
3+00	49.41	2° 25' 48"	5° 19' 11"	49.40	45.50
+50	49.41	2° 25' 48"	7° 44' 59"	49.40	45.50
3+65.44	15.25	0° 45' 00"	8° 29' 59"	15.25	14.05

CURVE DATA: 8° offset N curb Sta. 4+25.38 to 6+74.57  
 R=846.85 Δ=17° Defl=202972 min/ft arc Sta. on N.R.

STATION	Arc Length 8' offset	Deflection Angle	Total Deflection	Chord Length 8' offset	Chord Length 8' offset
4+25.38					
+50	24.82	0° 50' 28"	0° 50' 28"	24.81	24.14
5+00	50.42	1° 42' 20"	2° 32' 48"	50.42	43.14
+50	50.42	1° 42' 20"	4° 15' 07"	50.42	43.14
6+00	50.41	1° 42' 19"	5° 57' 22"	50.41	43.12
+50	50.42	1° 42' 20"	7° 39' 42"	50.42	43.14
6+74.57	24.77	0° 50' 17"	8° 29' 59"	24.76	24.10

Sheet 1 of 2



DALLAS STREET  
 EL Elizabeth to WL Seneca.  
 30' Conc. #Cb.  
 CITY OF WICHITA, KANSAS  
 B.E. SMITH CITY ENGINEER  
 JULY 1957 PROJ. NO. C16-127