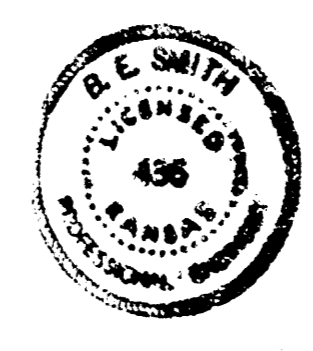
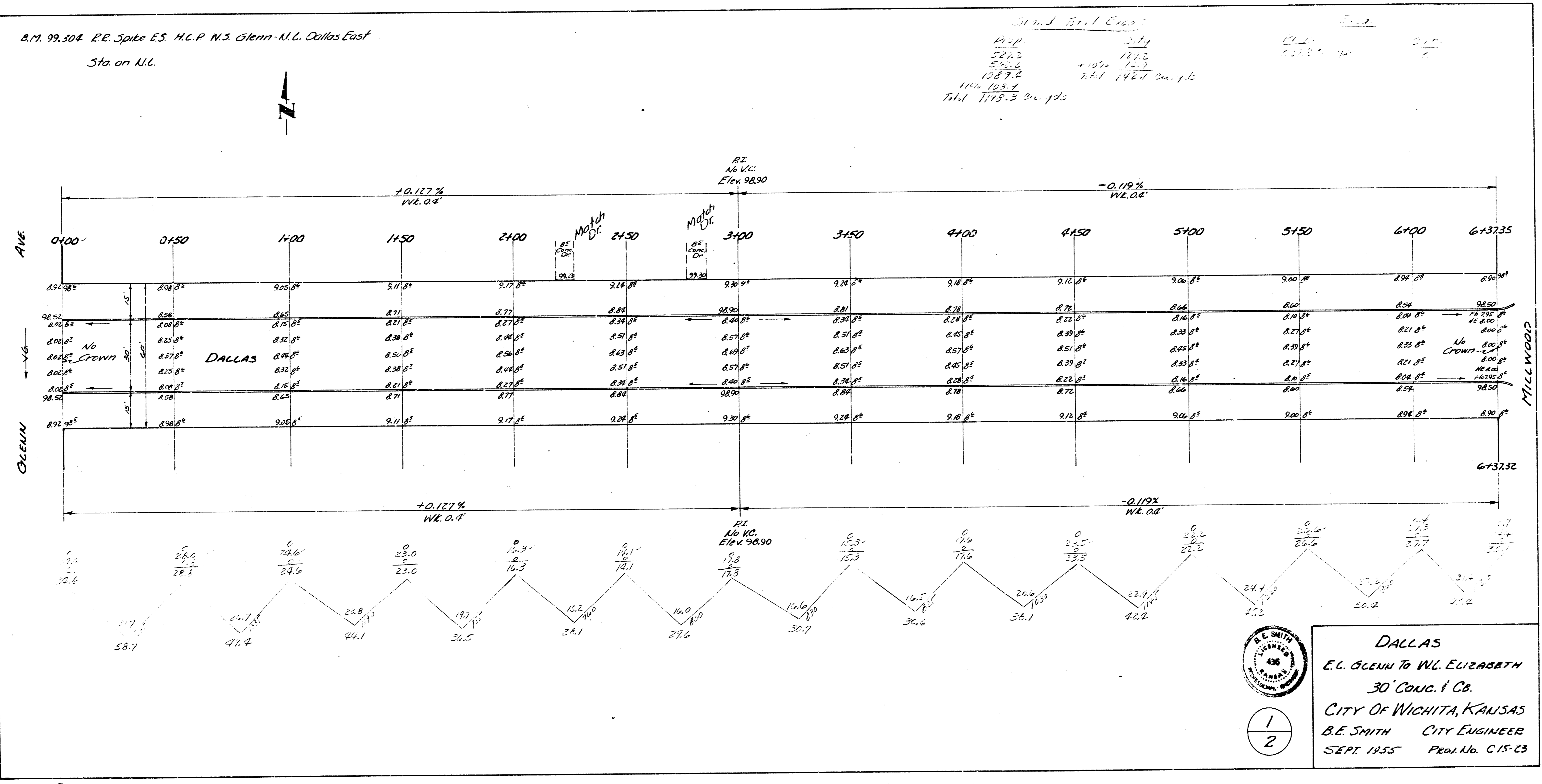


A.M. 99.304 R.R. Spike E.S. H.C.P. N.S. Glenn-A.L. Dallas East
Sta. on N.L.

Sum of Real Elev.
 524.3 21.4
 562.8 12.2
 1587.2 7.1
 142.7 142.7
 Total 1145.3

Survey Young
 Plot DEC
 Ex DEC
 1935



DALLAS
 E.L. GLENN TO W.L. ELIZABETH
 30" CONC. P. & CO.
 CITY OF WICHITA, KANSAS
 B.E. SMITH CITY ENGINEER
 SEPT. 1935 PEARL No. C-15-23

1
2

