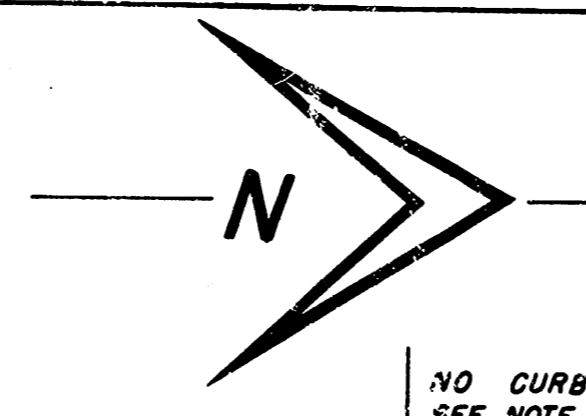
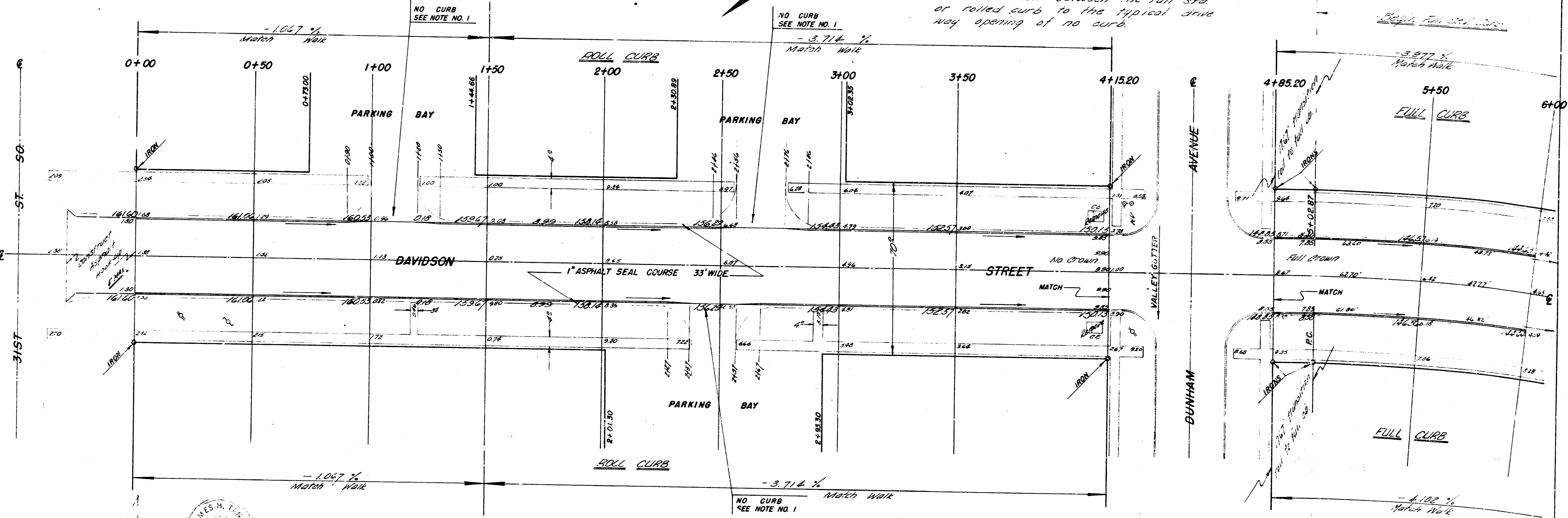


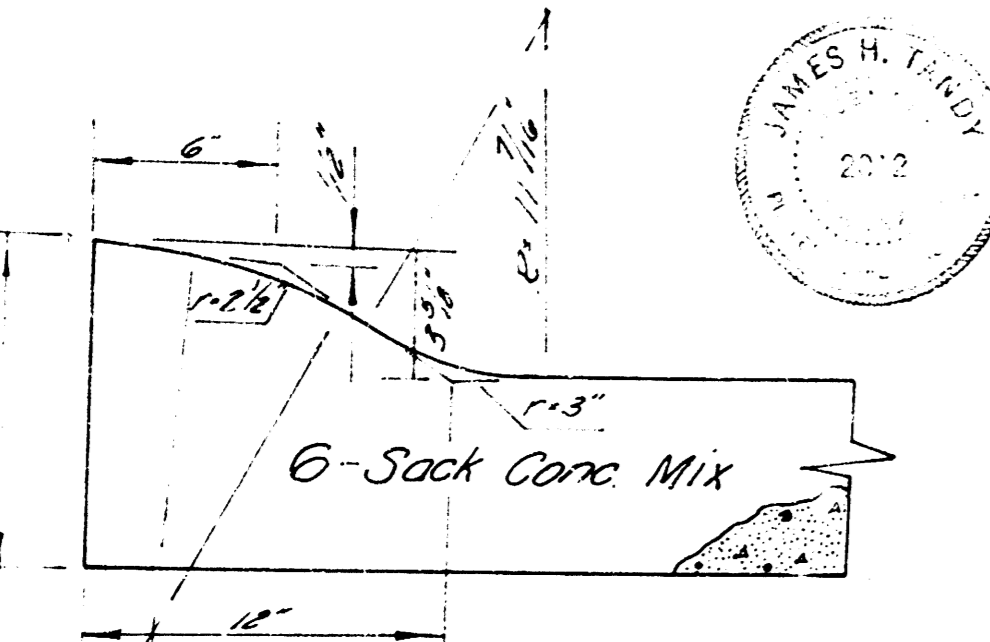
BM 16217 R.R. SPIKE N FACE P.P. E. SIDE DAVIDSON & N. SIDE 31ST ST. SO.  
 BM 15314 N.W. BOLT, FLANGE P.H., S.W. COR. DUNHAM & DAVIDSON.  
 BASELINE & STATIONING ON WEST PROPERTY LINE.



**General Note No. 1**  
 No Curb  
 There will be a 20' section of no curb in front of each parking bay as indicated throughout this set of plans. 10' sections will be used for transition between the full spd or rolled curb to the typical drive way opening of no curb.

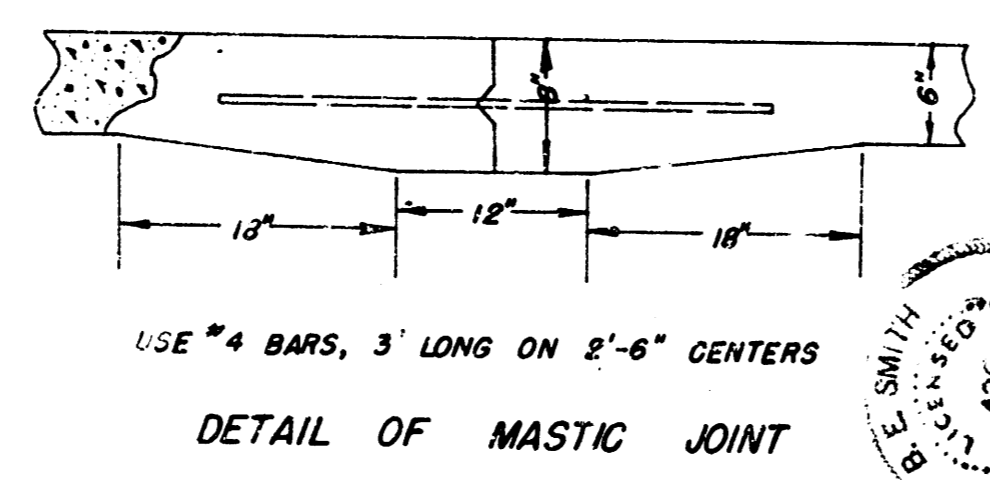


KRAUS JAKS



**NON-STD ROLL CURB DETAIL**  
 Rolled curb to be used on this proj. except where otherwise noted.

**Note:**  
 The city field engineer shall direct the removal & replacement of concrete sidewalk at locations where he considers this action necessary.



USE #4 BARS, 3' LONG ON 6" CENTERS  
 DETAIL OF MASTIC JOINT

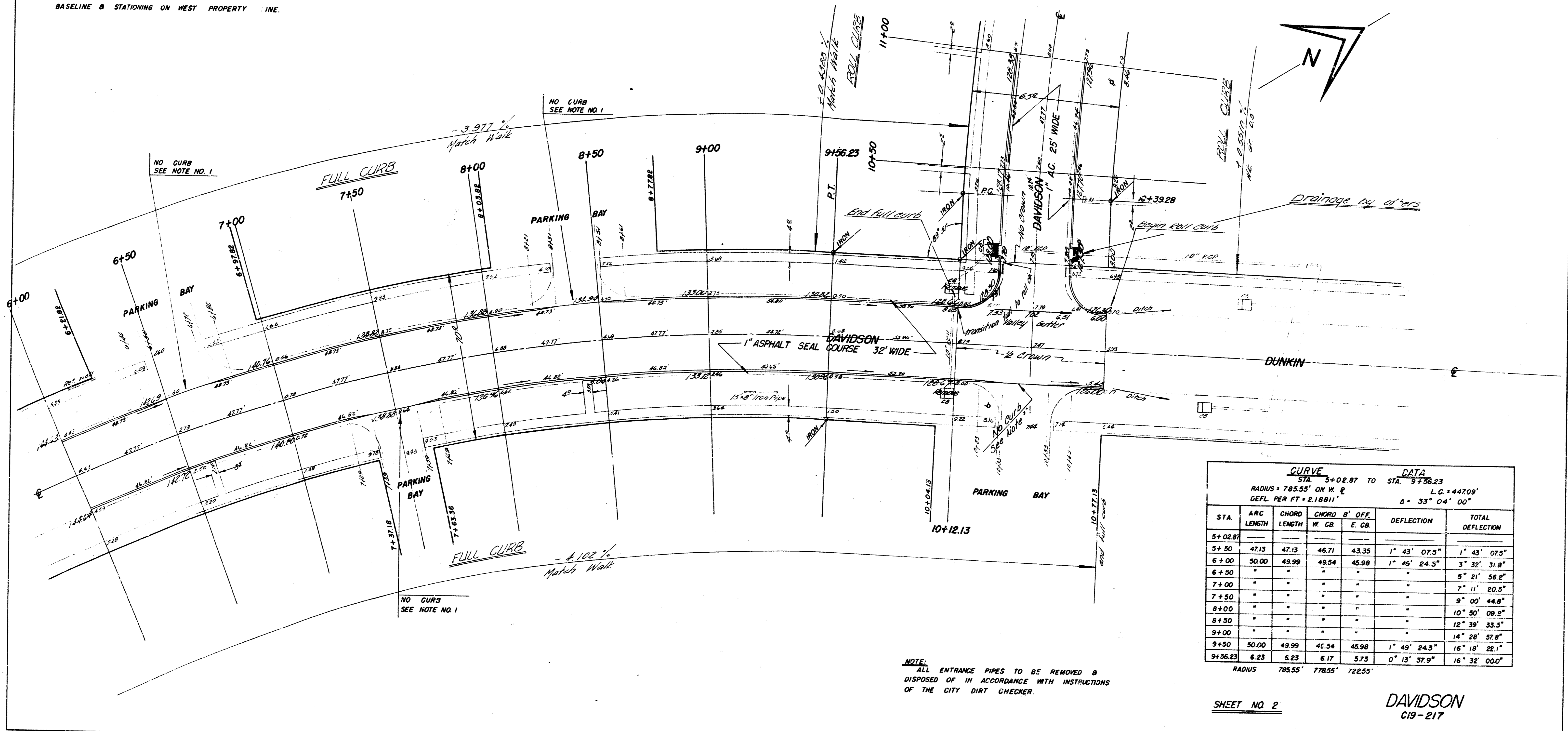
**Note to Contractor:**  
 Davidson has an existing asphalt surface approx 1" in thickness throughout its entire length. This asphalt is to be excavated & disposed of within the planview area as directed by the city supt. of st maint. Payment will be made as per unit of surface material removed. No deduction from excavation quantities will be made for asphalt removal.

<b>COMPO FILL</b>	
PROPERTY	1167
	117
	1284
<b>EXCAVATION</b>	
PROPERTY	1167
CITY	117
	1284
	1629
	1751.4
	180

SHEET NO. 1

**DAVIDSON**  
 N.L. 31ST ST. SO. TO CUL-DE-SAC  
 30' CONG. & CB.  
 CITY OF WICHITA, KANSAS  
 B. E. SMITH CITY ENGINEER  
 DATE MARCH 1924 PROJ. NO. 019-217

B.M. 127.43 R.R. SPIKE S. FACE P.P., N.W. COR. DAVIDSON & DUNKIN.  
 BASELINE & STATIONING ON WEST PROPERTY LINE.



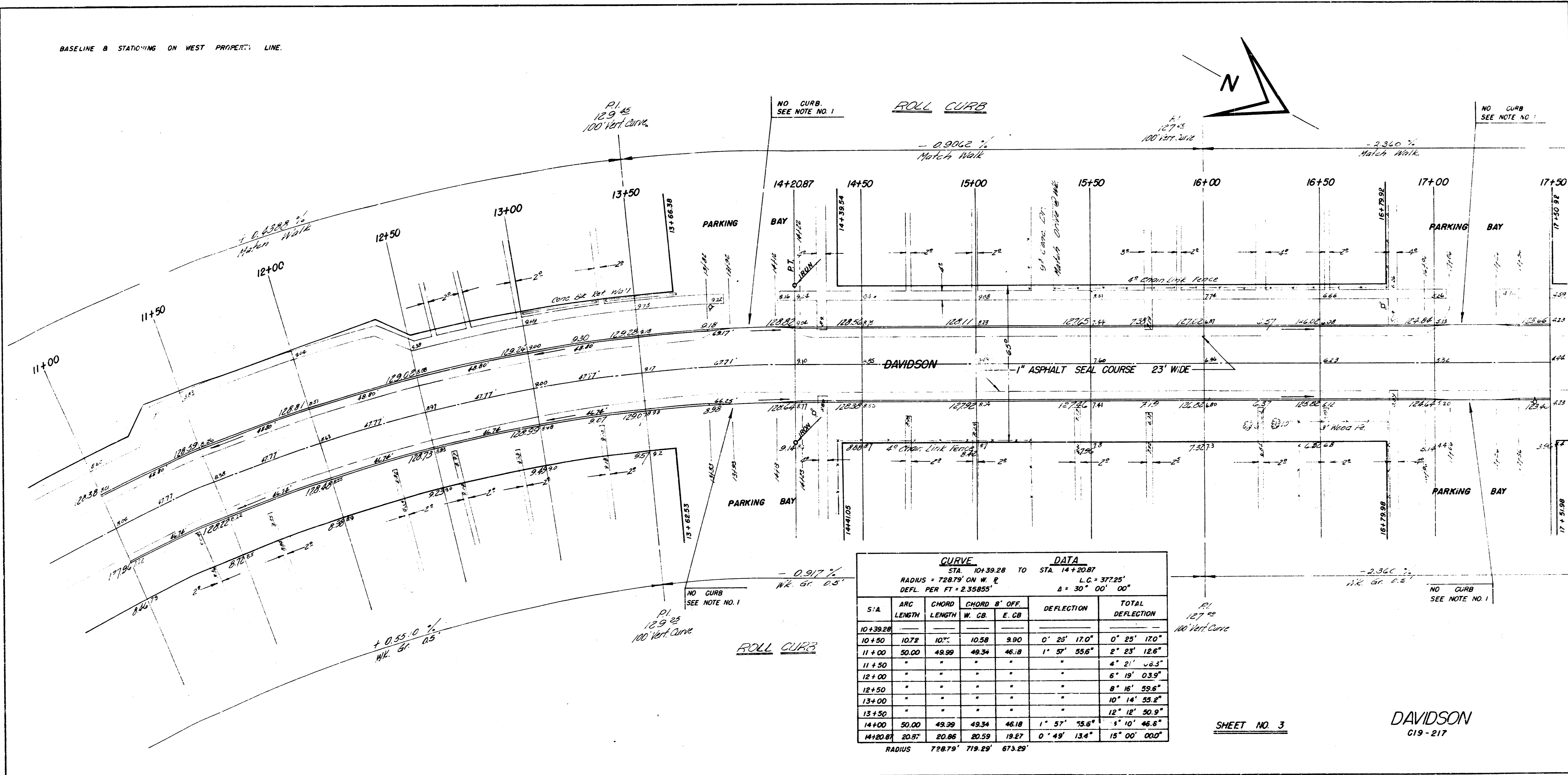
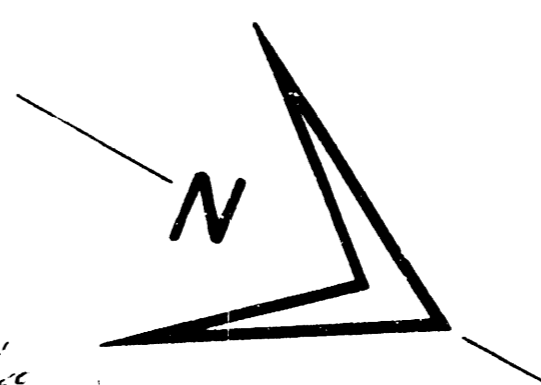
CURVE DATA		CHORD B' OFF.		DEFLECTION		TOTAL DEFLECTION
STA	ARC LENGTH	CHORD LENGTH	W. CB	E. CB	DEFLECTION	
5+02.87						
5+50	47.13	47.13	46.71	43.35	1° 43' 07.5"	1° 43' 07.5"
6+00	50.00	49.99	49.54	45.98	1° 49' 24.3"	3° 32' 31.8"
6+50	"	"	"	"	"	5° 21' 56.2"
7+00	"	"	"	"	"	7° 11' 20.5"
7+50	"	"	"	"	"	9° 00' 44.8"
8+00	"	"	"	"	"	10° 50' 09.2"
8+50	"	"	"	"	"	12° 39' 33.5"
9+00	"	"	"	"	"	14° 28' 57.8"
9+50	50.00	49.99	49.54	45.98	1° 49' 24.3"	16° 18' 22.1"
9+56.23	6.23	6.23	6.17	5.73	0° 15' 37.9"	16° 32' 00.0"
RADIUS		785.55'	778.55'	725.55'		

NOTE:  
 ALL ENTRANCE PIPES TO BE REMOVED &  
 DISPOSED OF IN ACCORDANCE WITH INSTRUCTIONS  
 OF THE CITY DIRT CHECKER.

SHEET NO. 2

DAVIDSON  
 C19-217

BASELINE & STATIONING ON WEST PROPERTY LINE.



**CURVE DATA**

STA. 10+39.28 TO STA. 14+20.87

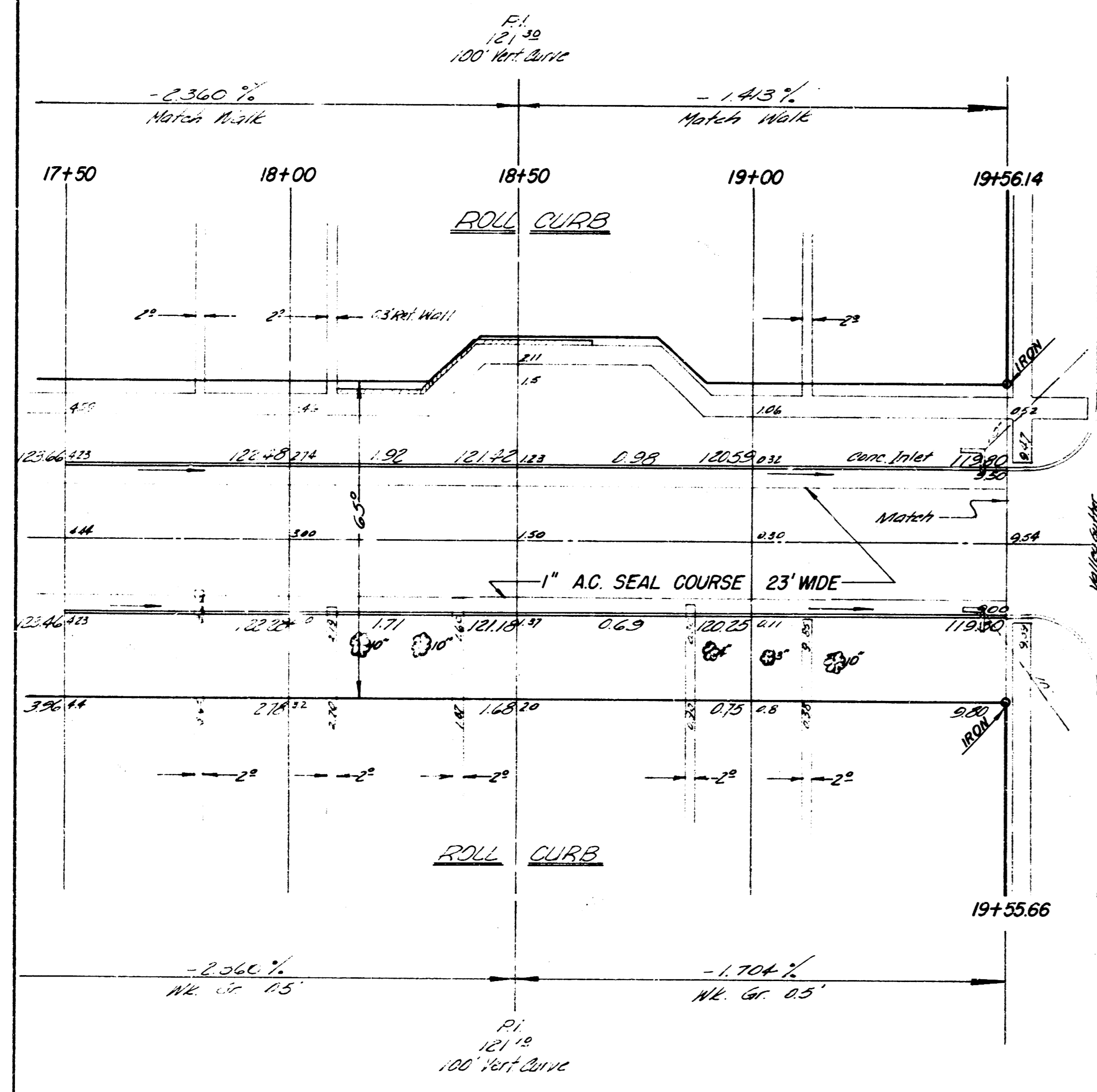
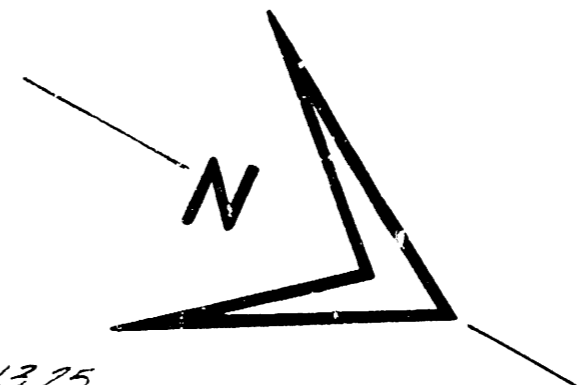
RADIUS = 728.79' ON W. E. L.C. = 377.25'

DEFL. PER FT. = 2.35855" Δ = 30° 00' 00"

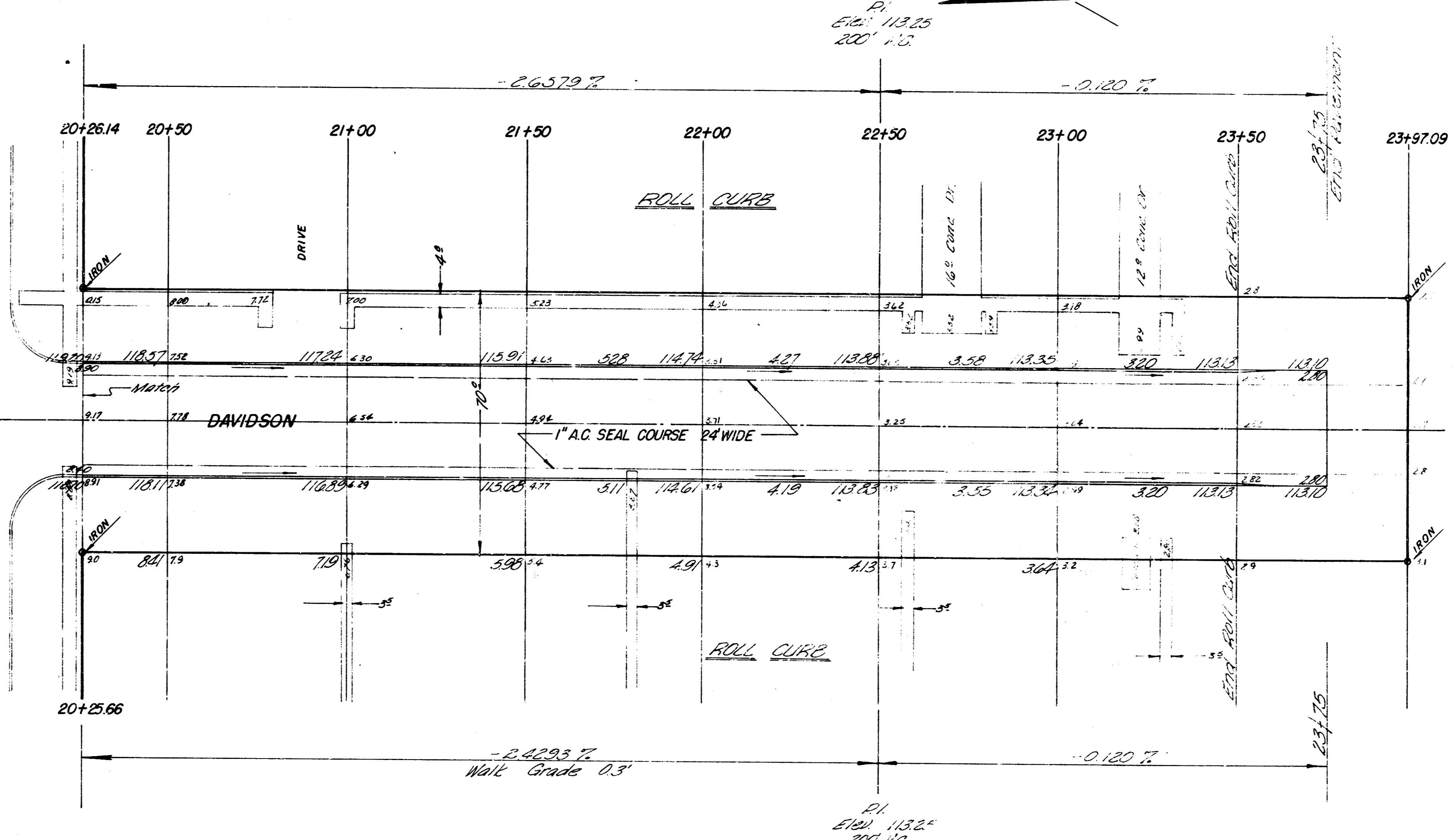
S/A	ARC LENGTH	CHORD LENGTH	CHORD S' OFF.		DEFLECTION		TOTAL DEFLECTION
			W. CB	E. CB			
10+39.28							
10+50	10.72	10.72	10.58	9.90	0° 25' 17.0"	0° 25' 17.0"	
11+00	50.00	49.99	49.34	46.18	1° 57' 55.6"	2° 23' 12.6"	
11+50	"	"	"	"	"	4° 21' 0.3"	
12+00	"	"	"	"	"	6° 19' 03.9"	
12+50	"	"	"	"	"	8° 15' 55.6"	
13+00	"	"	"	"	"	10° 14' 55.2"	
13+50	"	"	"	"	"	12° 12' 50.9"	
14+00	50.00	49.99	49.34	46.18	1° 57' 55.6"	1° 10' 46.6"	
14+20.87	20.87	20.86	20.59	19.27	0° 45' 13.4"	15° 00' 00.0"	
RADIUS		728.79'	719.29'	673.29'			

SHEET NO. 3  
DAVIDSON  
C19-217

B.M. 18261 SSW BOLT ON FLANGE F.H., N.E. COR. DAVIDSON & SUNNYBROOK.  
 BASELINE B STAT-JWING ON WEST PROPERTY LINE.



SUNNYBROOK



SHEET NO. 4

DAVIDSON  
 619-217

