

B.M. 111.35 "4" on E. end of N. Curb Top
337' E. of Sycamore South.

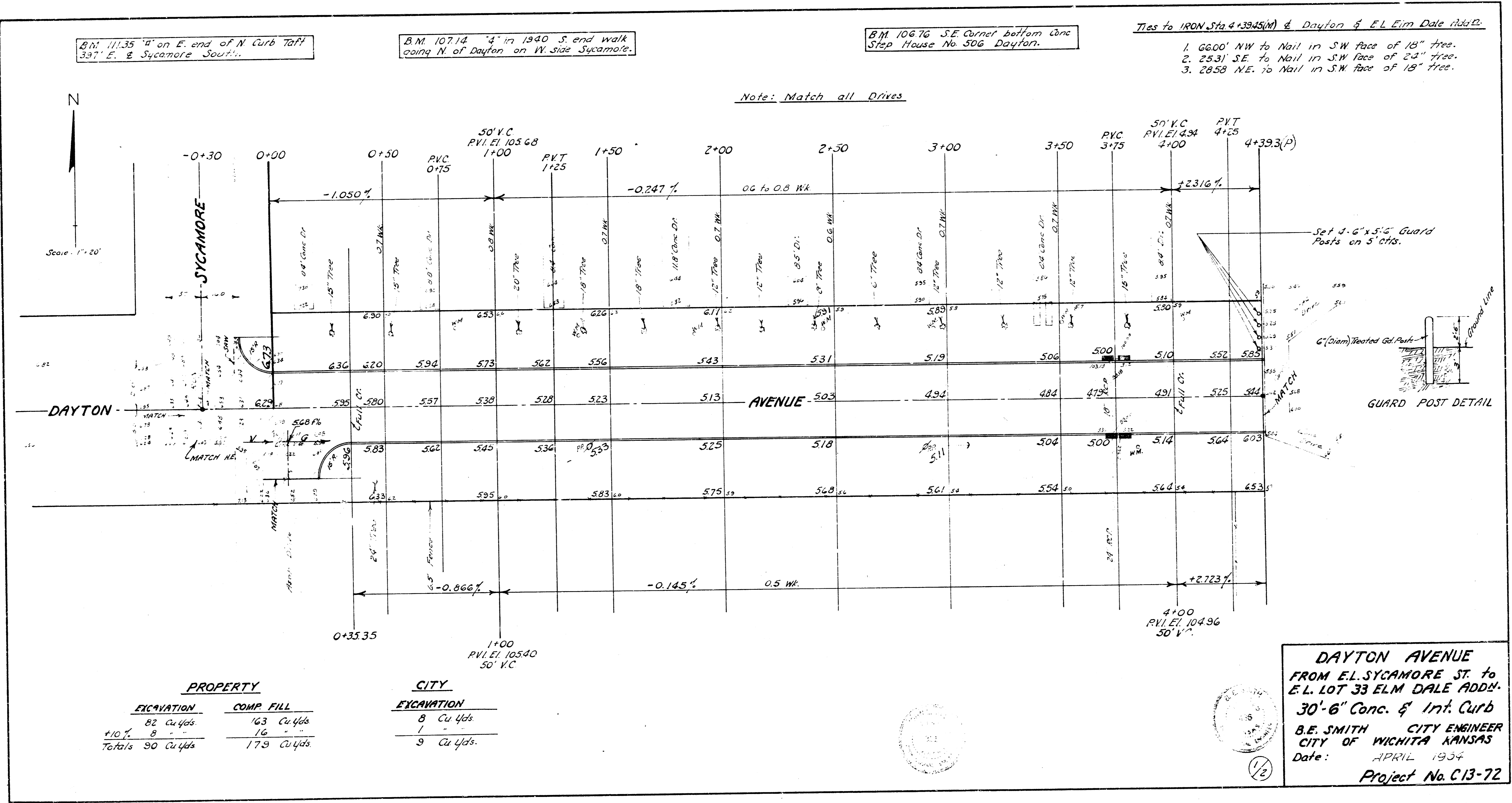
B.M. 10714 "4" in 1940 S. end walk
going N. of Dayton on W. side Sycamore.

B.M. 10676 S.E. Corner bottom Conc
Step House No 506 Dayton.

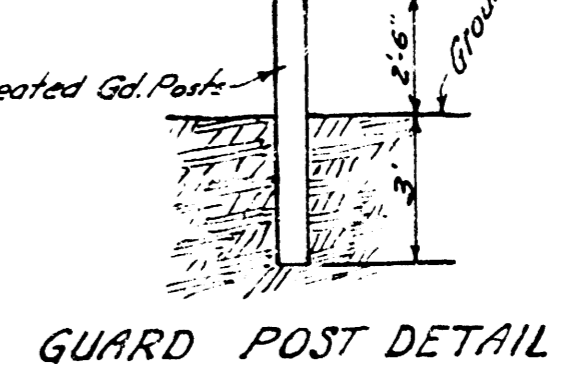
Ties to IRON Sta 4+39.45(W) & Dayton & E.L. Elm Dale Addr.

1. 66.00' NW to Nail in S.W. face of 18" tree.
2. 25.31' SE to Nail in S.W. face of 24" tree.
3. 28.58' NE to Nail in S.W. face of 18" tree.

Note: Match all Drives



Set 4-6"x5'-6" Guard Posts on 5' cts.



PROPERTY		CITY	
EXCAVATION	COMP. FILL	EXCAVATION	
82 Cu Yds.	163 Cu Yds.	8 Cu Yds.	
+10'	16	1	
Totals 90 Cu Yds.	179 Cu Yds.	9 Cu Yds.	

DAYTON AVENUE
FROM E.L. SYCAMORE ST. to
E.L. LOT 33 ELM DALE ADDY.
30'-6" Conc. & Int. Curb
B.E. SMITH CITY ENGINEER
CITY OF WICHITA KANSAS
Date: APRIL 1934
Project No. C13-72



1/2