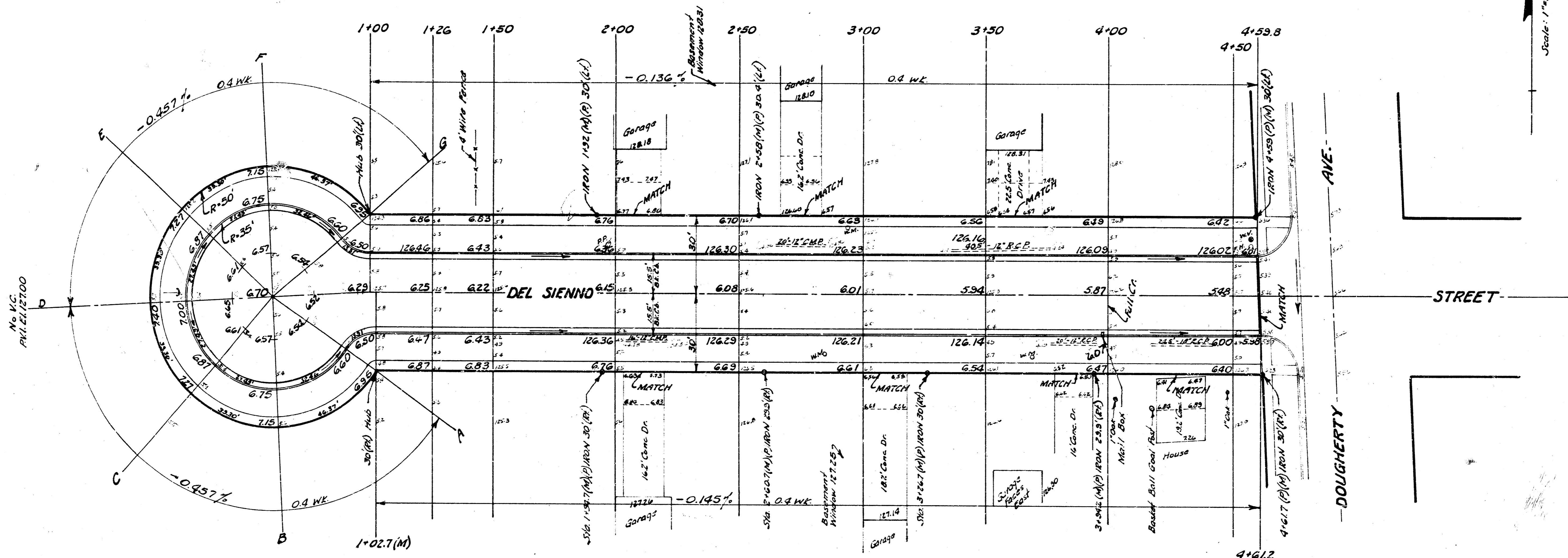


B.M. 126.33 R.R. Spike S.E. side P. Pole on
S.W. Corner Dougherty and Del Sienna.

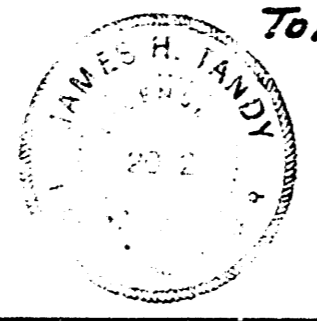


DLX #120
JLA
City of Wichita, Kan.

EXCAVATION	COMP. FILL
167 Cu.Yds.	188 Cu.Yds.
+10% 17 "	
Totals 184 Cu.Yds.	
Sub-Grade Modification 222 Cu.Yds.	
	310 "
+10% 41 "	
Total 451 Cu.Yds.	

NOTE: Bid Item of Borrow Excavation is to include all costs of acquiring, excavating and delivering material to the project as Compacted Fill.

100 Cu.Yds. Borrow Exc.	Contractor to grade parkings.
+10% 10 "	Fill material for parkings to be furnished by others.
Total 110 Cu.Yds.	



DEL SIENNO STREET
W. L. DOUGHERTY AVE to
& INCLUDE CUL-DE-SAC
26'-2'-30" Asph. Conc.
B.E. SMITH CITY ENGINEER
CITY OF WICHITA KANSAS
Date: Oct. 1962
Project No. C19-54

