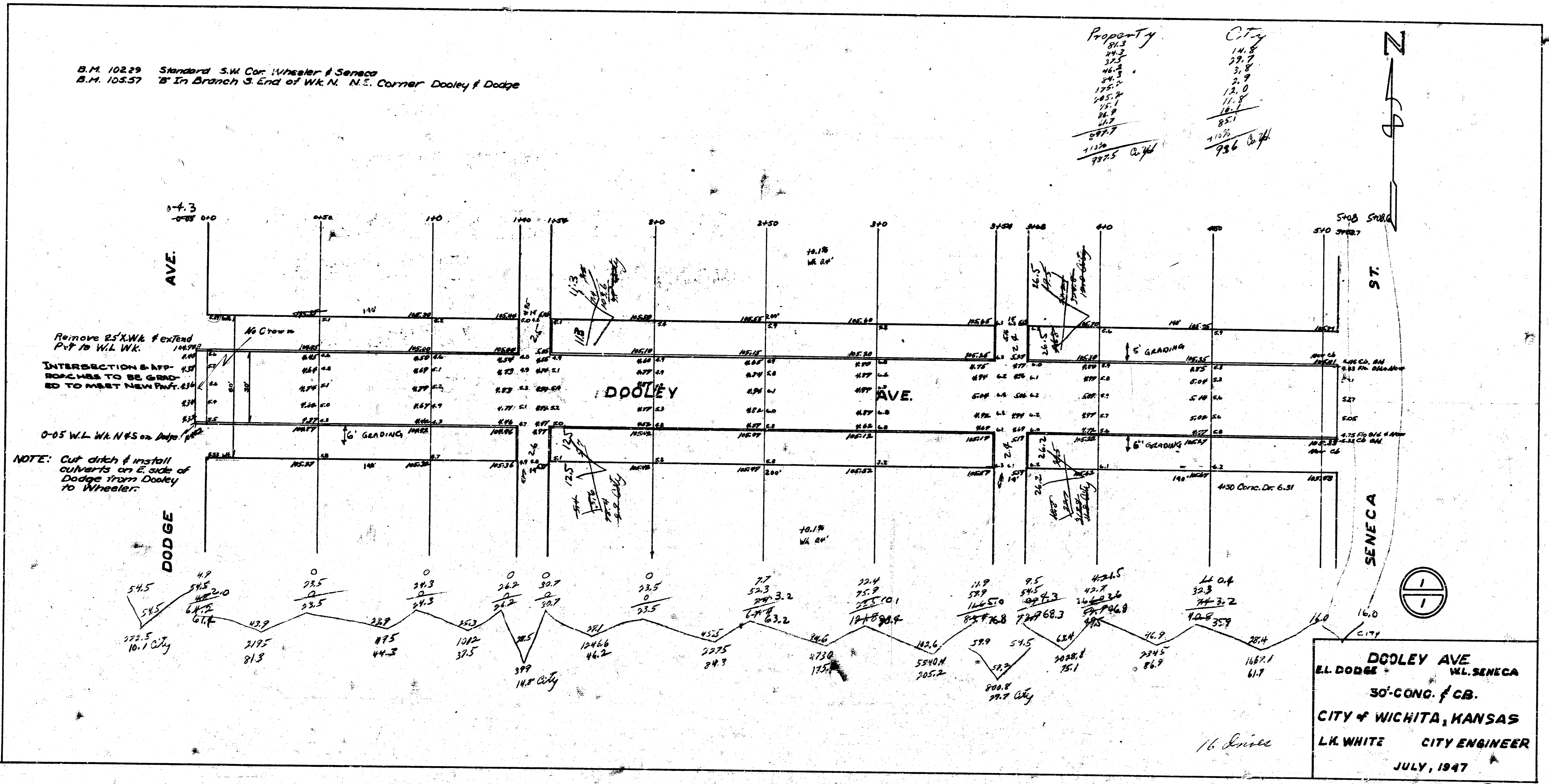


B.M. 102.29 Standard S.W. Cor. Wheeler & Seneca  
 B.M. 105.57 8' In Branch S. End of Wk. N. N.E. Corner Dooley & Dodge

Property	City
81.3	14.8
24.3	37.7
37.5	31.8
46.2	2.9
24.3	12.0
175.2	11.8
285.2	16.7
25.1	85.1
22.9	110%
27.7	98.6
1126	
997.5	



DOOLEY AVE  
 W.L. SENECA  
 30'-CONG. f. CB.  
 CITY OF WICHITA, KANSAS  
 L.K. WHITE CITY ENGINEER  
 JULY, 1947