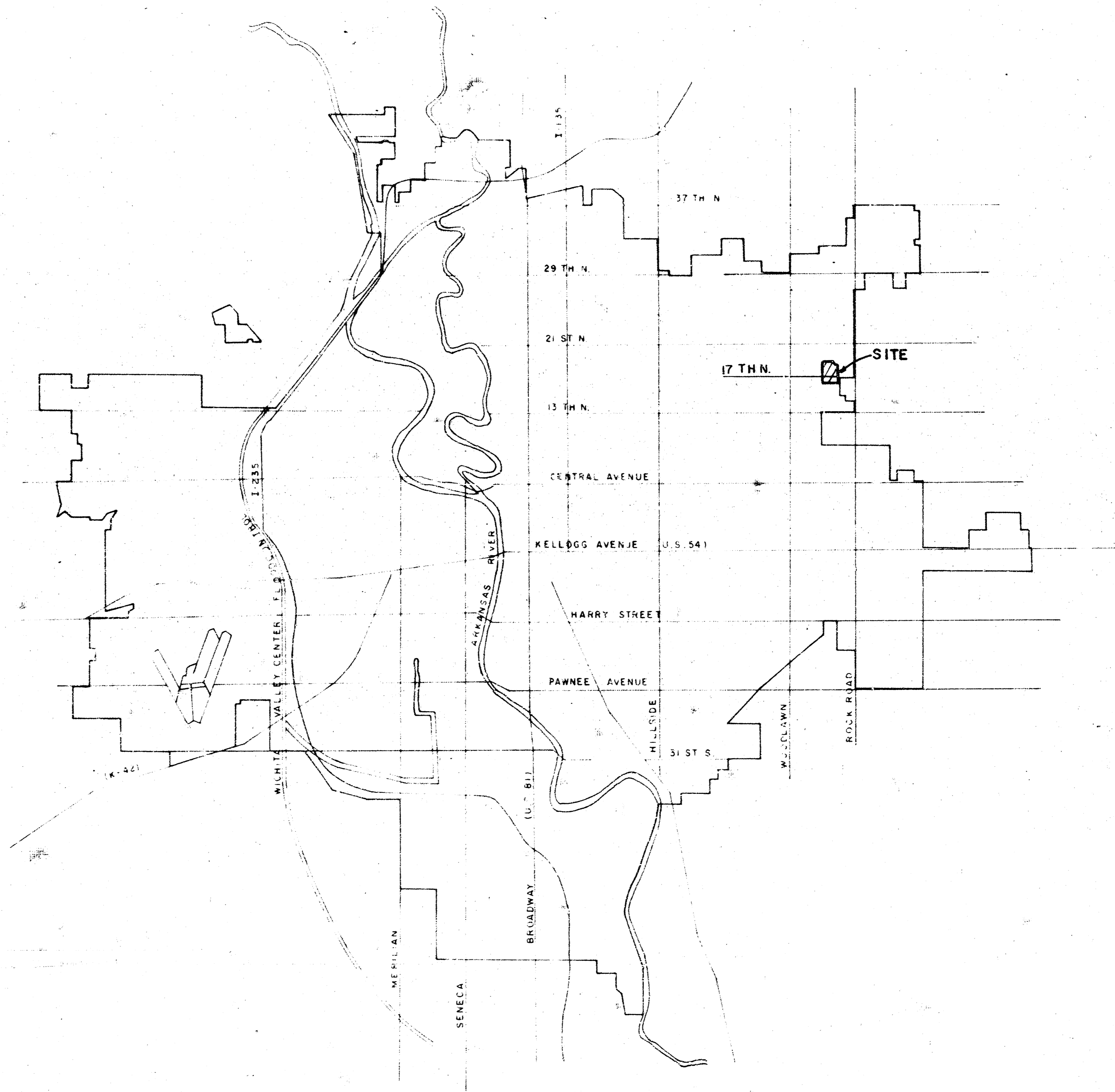


CITY OF WICHITA  
 DEPARTMENT OF PUBLIC WORKS  
**DOREEN AND 18TH STREET NORTH**

From North Line of 17th Street North  
 to West Line of Winstead

PROJECT NO. 472-76-245-80843-000-000-001

ACTING CITY ENGINEER - DEAN SELLERS.



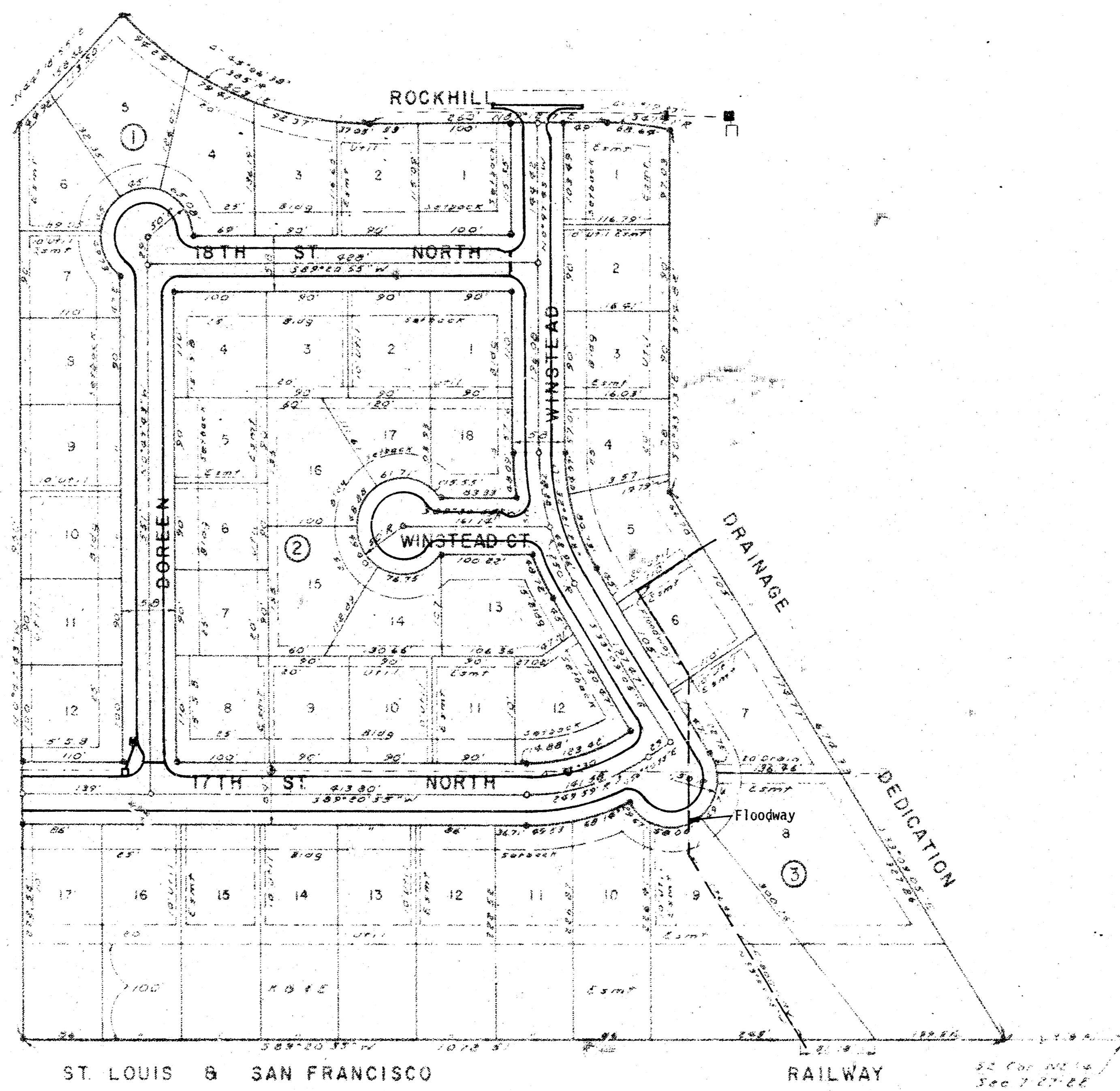
INDEX TO DRAWINGS

1. Title Sheet
2. Layout Map
3. Doreen
4. 18th Street North
5. Paving Detail 29' AC Offset Crown
6. Type IA Curb Inlet
7. X- Sections Doreen & 18th St. No.

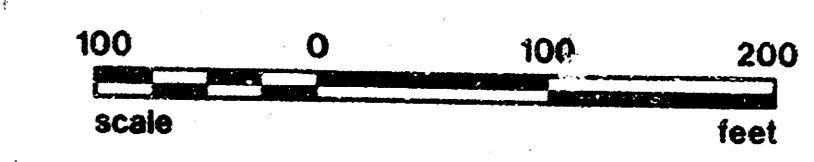
APPROVED AS NOTED  
 By CITY ENGINEER OF WICHITA  
 Paving *Steve J. Kelly* Date *4-10-80*  
 Drainage \_\_\_\_\_ Date \_\_\_\_\_

**dp** POE & ASSOCIATES OF KANSAS, INC.  
 CONSULTING ENGINEERS

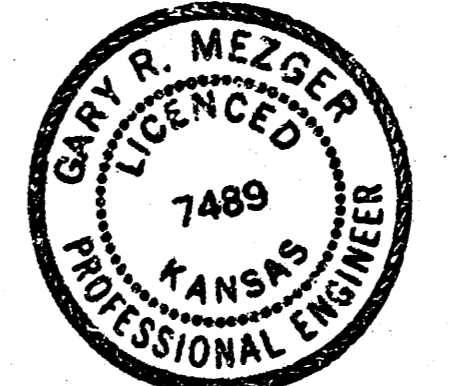




- GENERAL NOTES:
1. All Radius Dimensions are to Face of Curb.
  2. Spot Elevations are Top of Curb, Gutter line of Curb, and Crown of Pavement.
  3. Spot Elevations at Intersections and Cul-De-Sacs are 1/4 Points, Reverse Curves, and Return Points.
  4. All Metal pipe shall be helically corrugated pipes fully coated inside and outside. The coating may be bituminous or polymeric as specified in AASHTO Designation M246-78, Type B. All such coated corrugated pipes shall be smooth flow pipes for sizes 24" diameter or larger. All connection for these fully paved and/or fully coated pipes shall be fairly watertight constructed using huffer type coupler or equal.
  5. Contractor shall have the option of installing pre-cast Type 1A curb inlet in lieu of the brick type structure. See standard detail "Pre-cast Type 1A Curb Inlet" dated Aug. 1979.
  6. All excess excavated material shall be stored on site at the direction of the owner. Under NO circumstances shall excavated material be placed within the "Floodway".



PROJECT NO. 472-76-245-80843-000-000-001

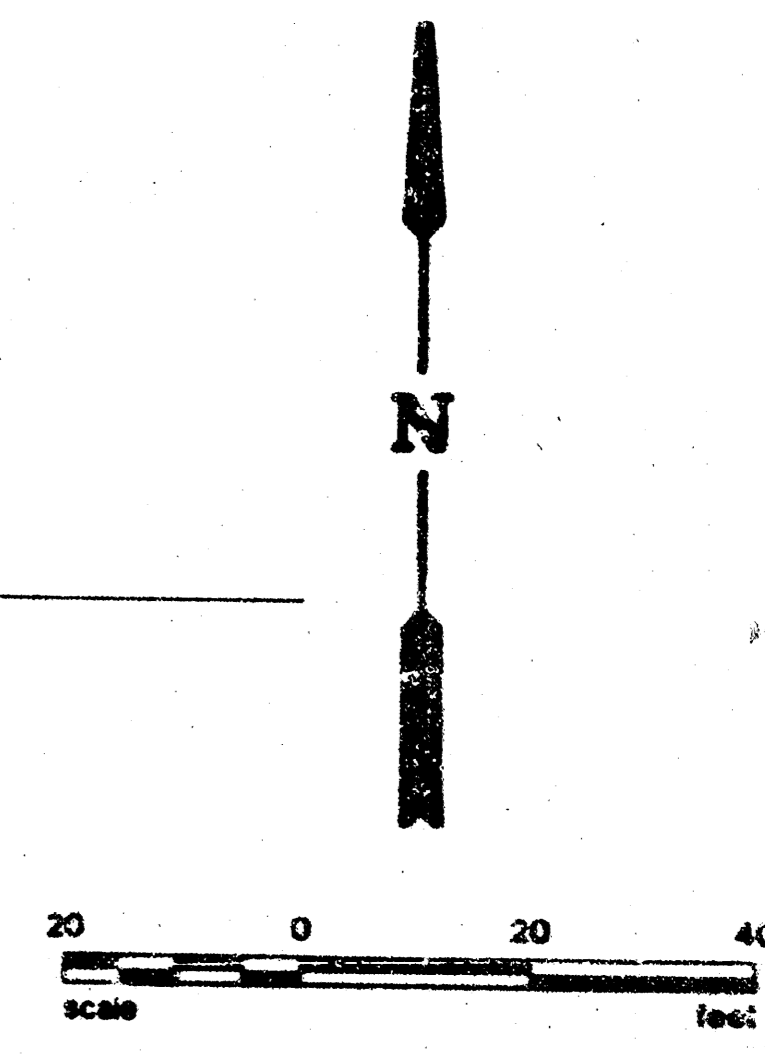
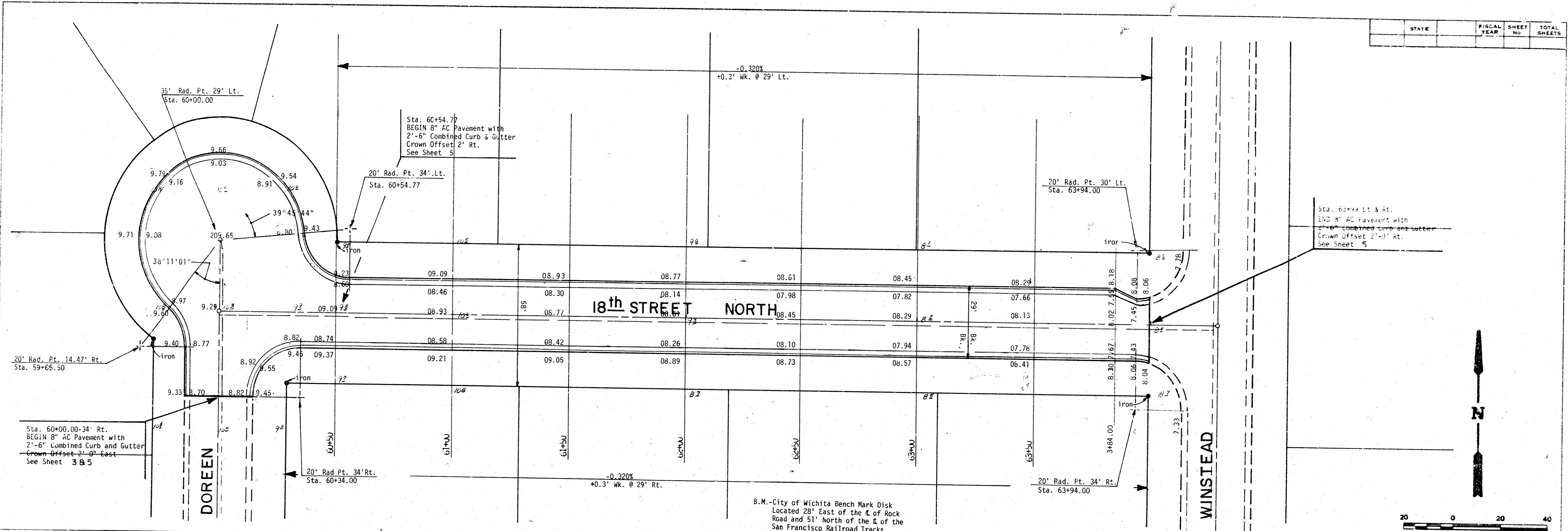


<b>dp</b>	CITY OF WICHITA	
	LISA COLE 1ST. ADDITION	
LAYOUT MAP		
ENGINEER: G.M.	CHECKED BY: J.W.	
DRAWN BY: J.P.	SCALE: 1/2" = 1'	
DATE: 8-2-1979	SHEET 2	

POE & ASSOCIATES  
CONSULTING ENGINEERS

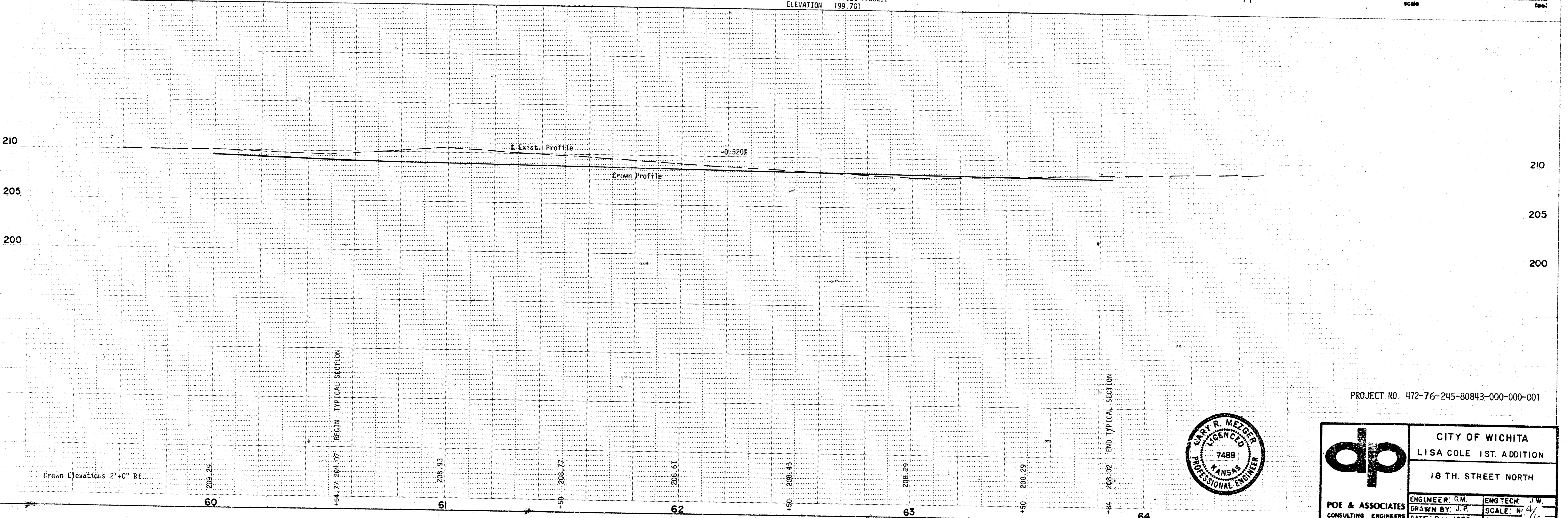


STATE	FISCAL YEAR	SHEET NO.	TOTAL SHEETS



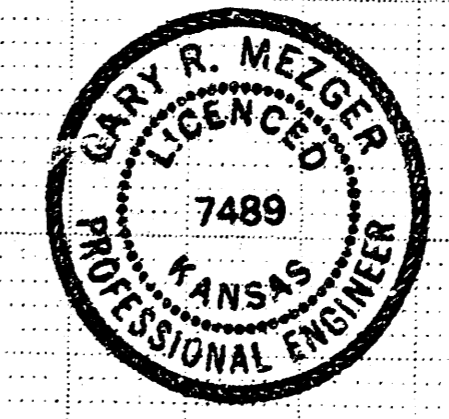
B.M.-City of Wichita Bench Mark Disk  
 Located 28' East of the E of Rock  
 Road and 51' North of the E of the  
 San Francisco Railroad Tracks.  
 ELEVATION 199.761

**PLAN**  
 SURVEYED BY: [ ]  
 GRADES CHECKED BY: [ ]  
 STRUCTURE NOTATIONS CHECKED BY: [ ]  
 DATE: [ ]



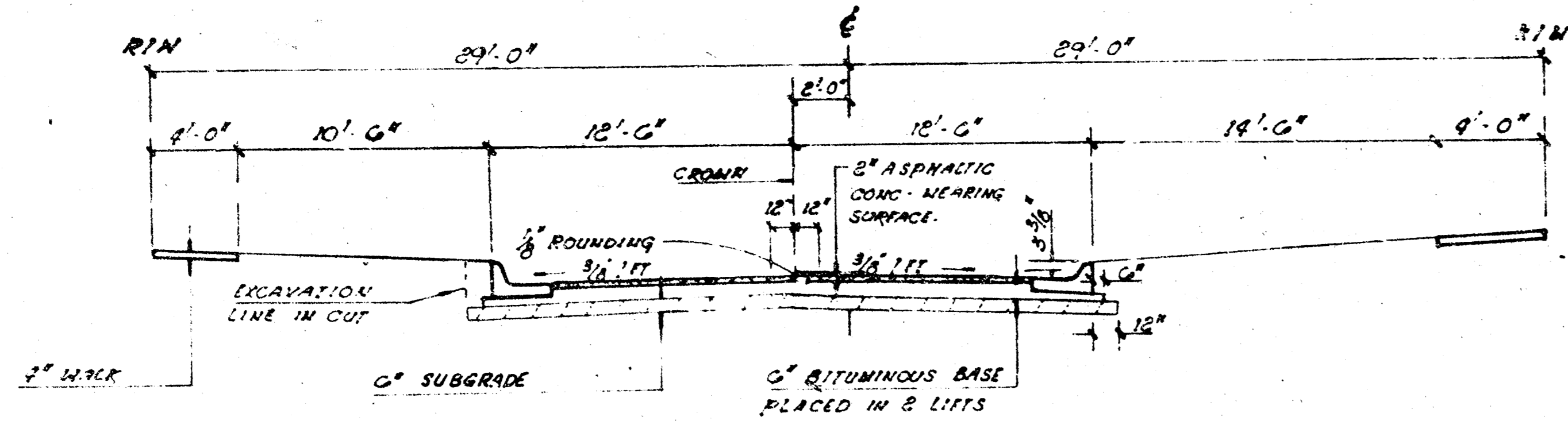
**PROFILE**  
 SURVEYED BY: [ ]  
 GRADES CHECKED BY: [ ]  
 STRUCTURE NOTATIONS CHECKED BY: [ ]  
 DATE: [ ]

PROJECT NO. 472-76-245-80843-000-000-001

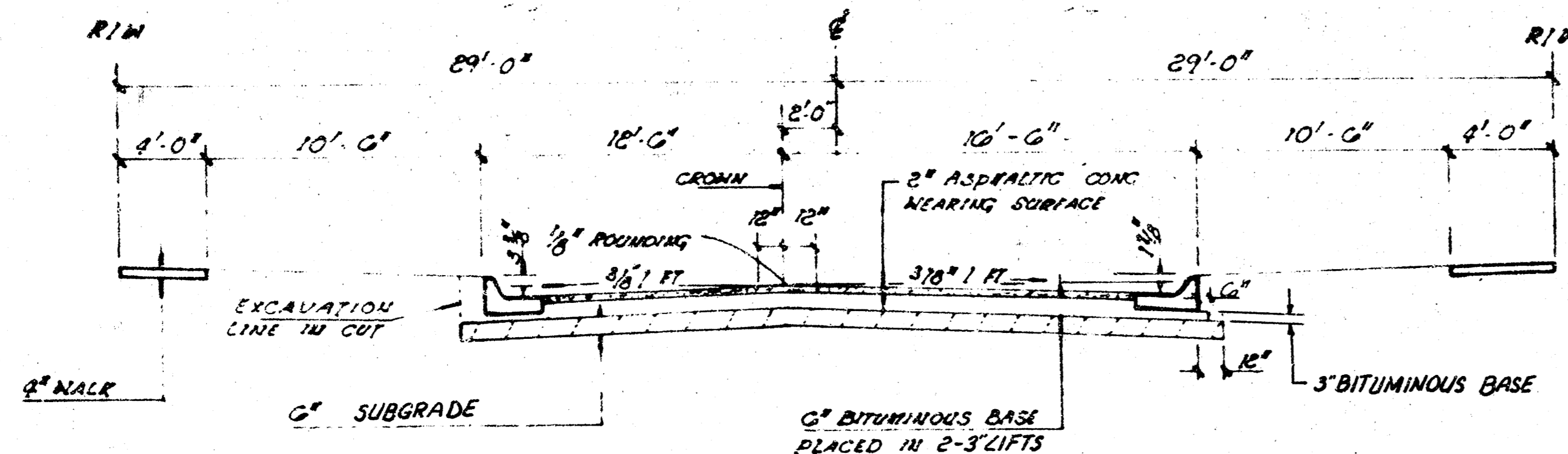


<b>dp</b>	CITY OF WICHITA	
	LISA COLE 1ST. ADDITION	
18 TH. STREET NORTH		
ENGINEER: G.M.	ENG. TECH: J.W.	
DRAWN BY: J.P.	SCALE: N 4/16	
DATE: Dec 1979	SHEET 4	

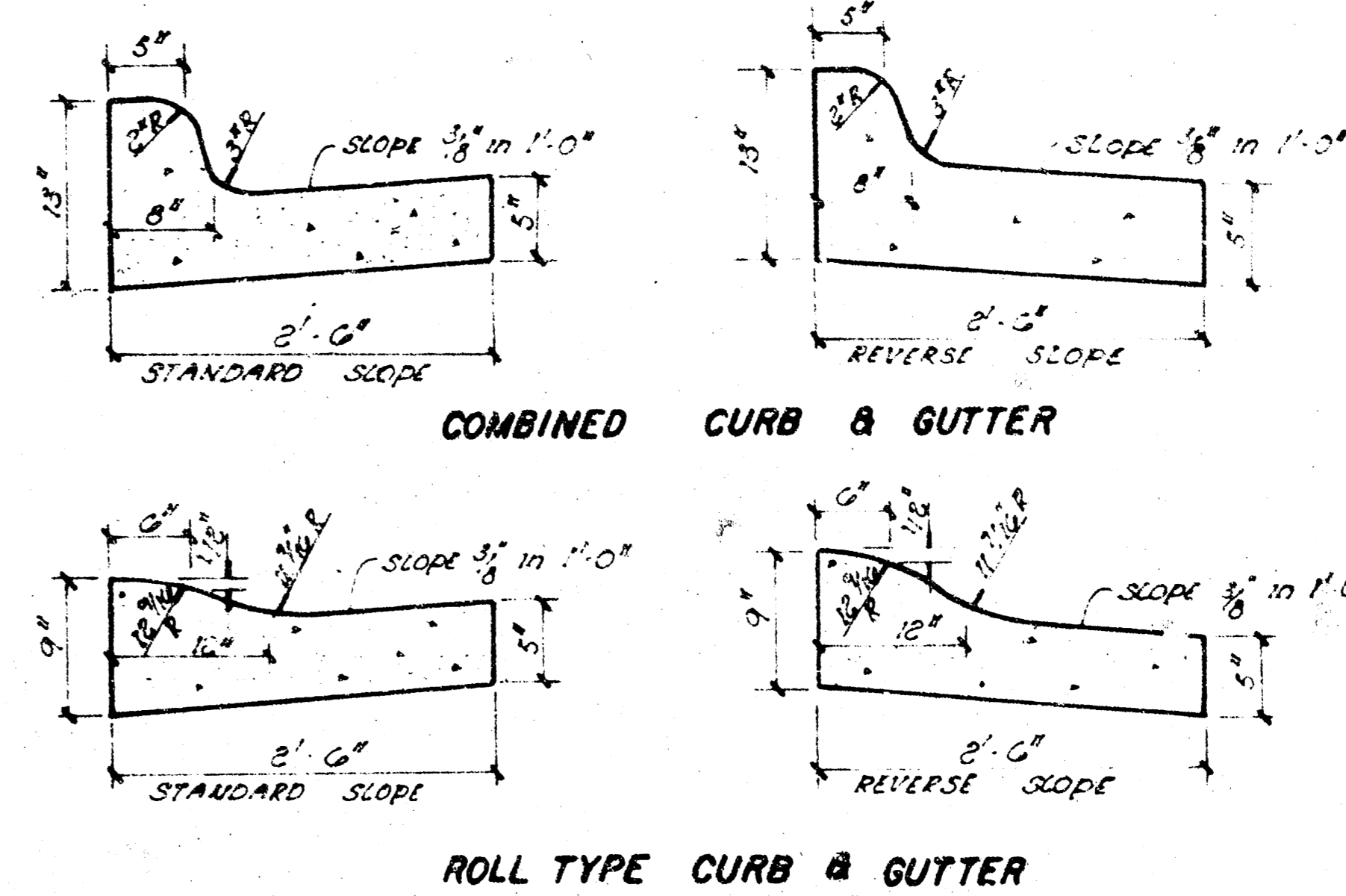
POE & ASSOCIATES  
 CONSULTING ENGINEERS



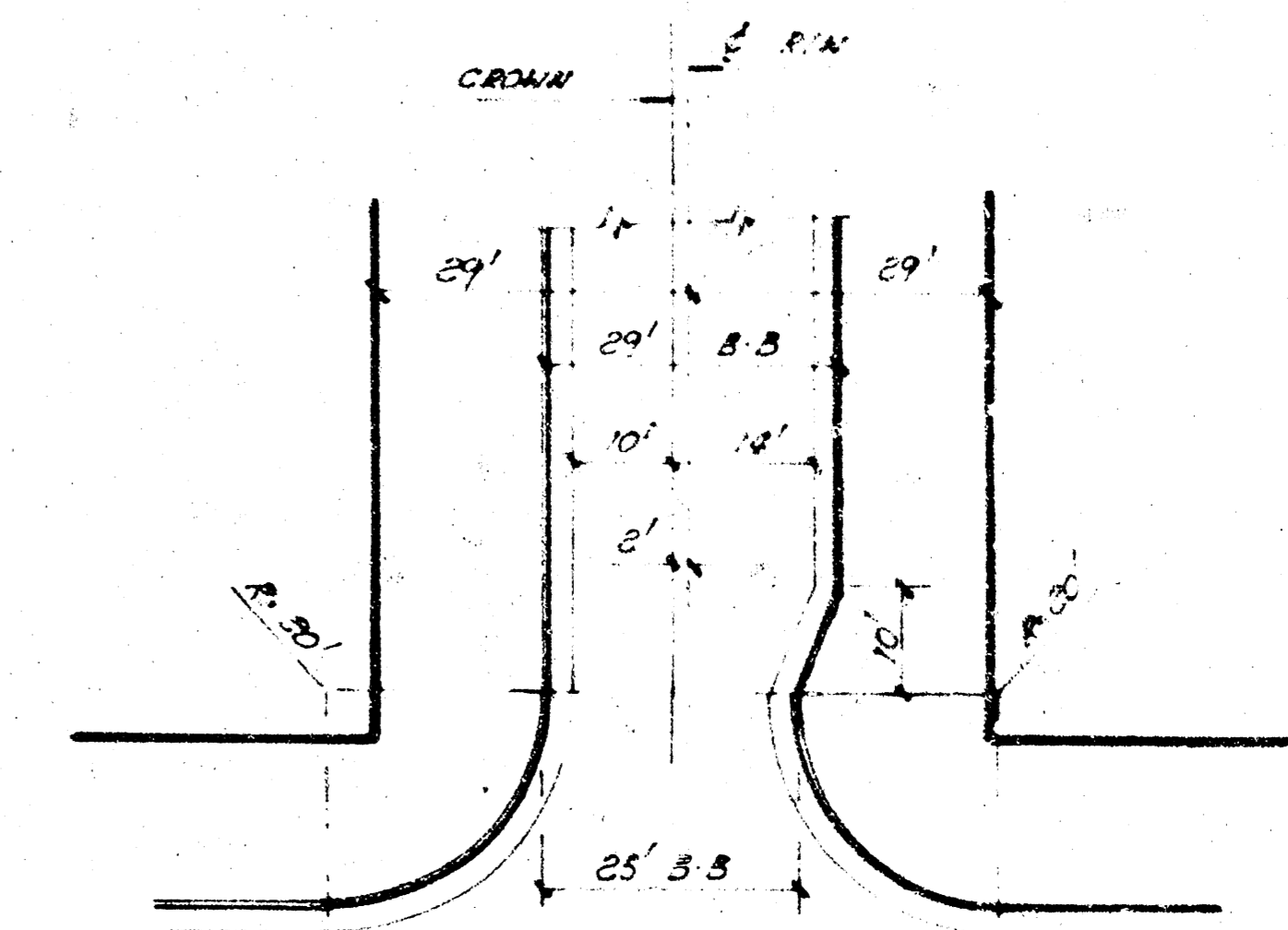
TYPICAL 25' B-B SECTION



TYPICAL 29' B-B SECTION  
W/ PARKING ON ONE SIDE



TYPICAL RESIDENTIAL SECTIONS  
FOR CROWN OFFSET - 58' R/W



PLAN VIEW (TYPICAL)

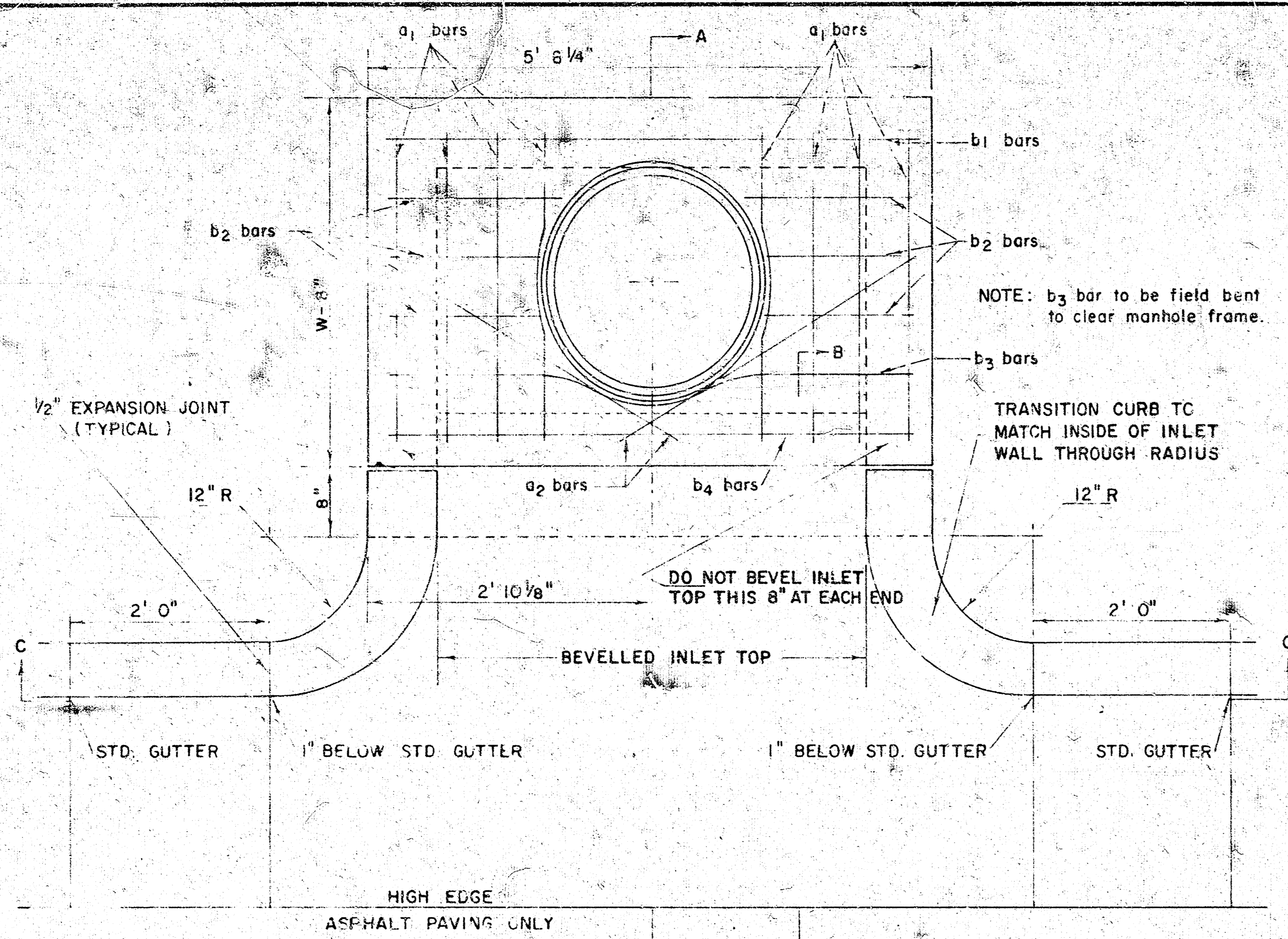
GENERAL NOTES

1. A TACK COAT OF EMULSIFIED ASPHALT (56 - 10) SHALL BE APPLIED AT AN APPROXIMATE RATE 0.05 GALLONS PER SQUARE YARD BETWEEN LIFTS OF ASPHALTIC MIXTURES WHEN ORDERED BY THE ENGINEER. TACK COAT WILL NOT BE PAID FOR DIRECTLY AND SHALL BE CONSIDERED AS SUBSIDIARY TO PRICE BID FOR ASPHALTIC PAVEMENT.
2. THE A.C. PAVEMENT BETWEEN COMBINED CURBS AND GUTTERS SHALL BE PAID AS SQUARE YARDS 8" A.C. PAVEMENT (6" BITUMINOUS BASE). THE BITUMINOUS BASE UNDER THE COMBINED CURBS AND GUTTER SHALL BE PAID AS SQUARE YARDS 3" BITUMINOUS BASE.
3. SIDEWALKS INDICATED ON THE TYPICAL SECTION ARE FOR LOCATION OF THAT SECTION. SIDEWALKS SHALL NOT BE CONSTRUCTED ON THIS PROJECT.
4. CONSTRUCTION JOINTS MAY BE CONSTRUCTED IN INTERIOR CURBS BY SAWING WITH AN APPROVED CONCRETE SAW. THE SAW SHALL EXTEND THROUGH THE CURB TO THE SUBGRADE.
5. INTERIOR CURBS SHALL BE TIED TO THE PAVEMENT BASE WITH SHORT DEFORMED BARS SPACED AT 2' - 0" INTERVALS. THESE BARS SHALL NOT BE LESS THAN 1" OR MORE THAN 3/4" IN DIAMETER.
6. TRANSITION CURBS SHALL BE PAID AS ROLL-TYPE CURBS, CURBS AND GUTTER.
7. TYPE OF SUBGRADE TREATMENT SHALL BE DETERMINED BY THE FIELD ENGINEER. THE TYPE OF SUBGRADE TREATMENT MAY CONSIST OF LIME TREATMENT, CEMENT TREATMENT, SUB-GRADE MODIFICATION, OR ANY COMBINATION OF THESE.

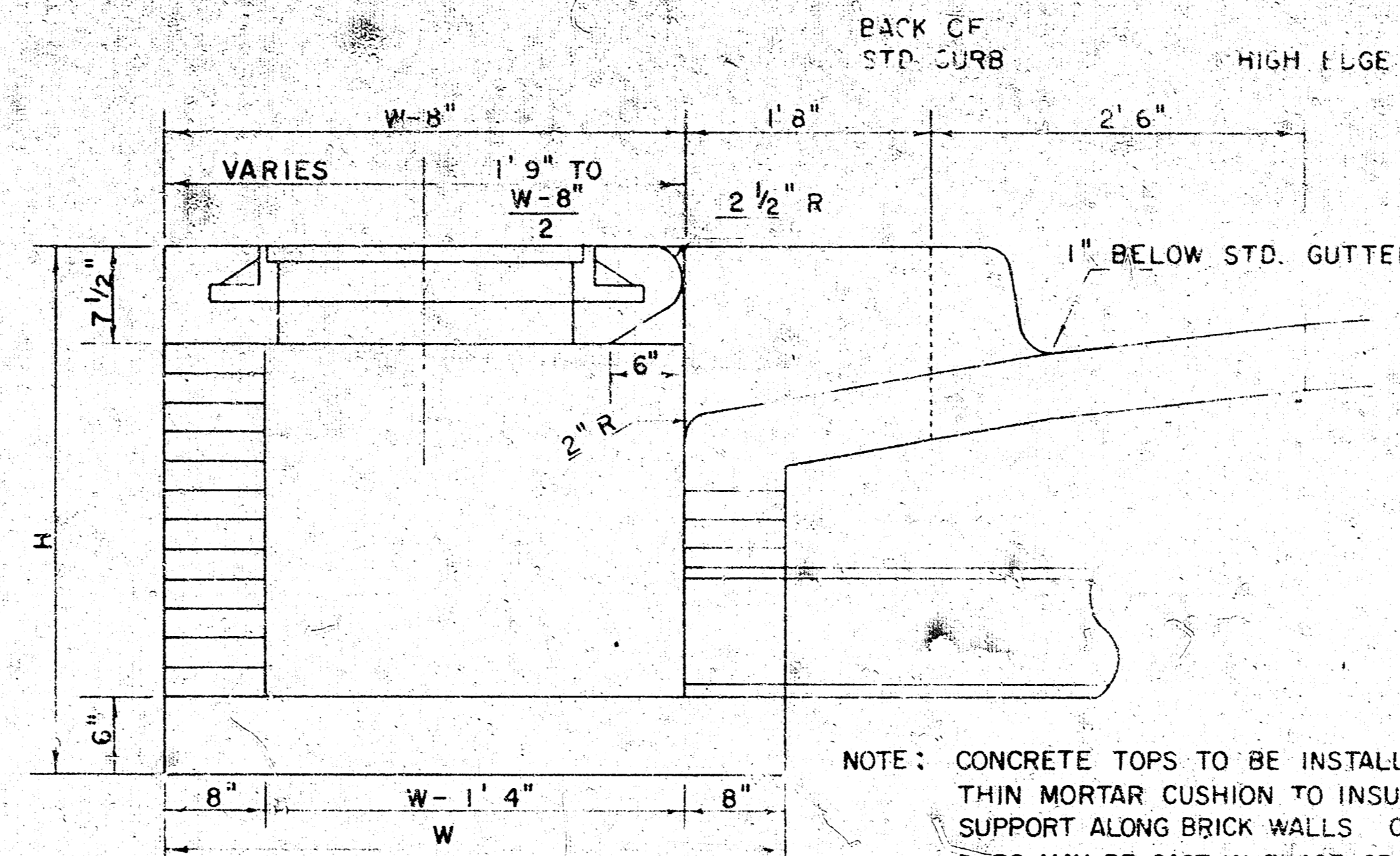


CITY OF WICHITA, KANSAS  
DEPARTMENT OF PUBLIC WORKS - ENGINEERING  
DEAN SELLERS ACTING CITY ENGINEER  
DATE: \_\_\_\_\_ PROJ. No. \_\_\_\_\_

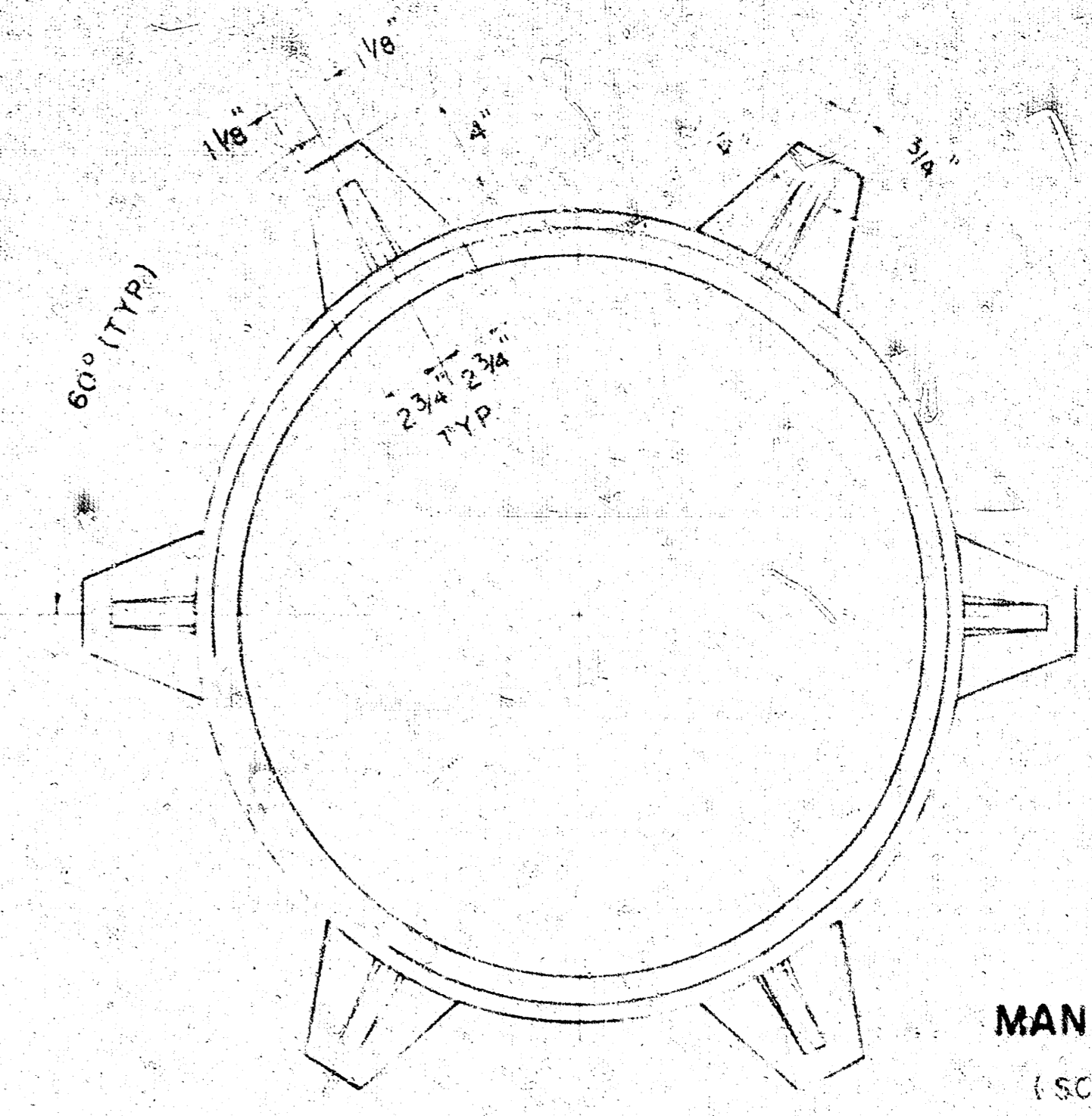
PROJECT NO. 472-76-245-80843-000-000-001



PLAN (SCALE 1" = 1' 0")



SECTION A-A (SCALE 1" = 1' 0")



MANHOLE FRAME (SCALE 1" = 6") WEIGHT = 180 LBS.

STEEL SCHEDULE

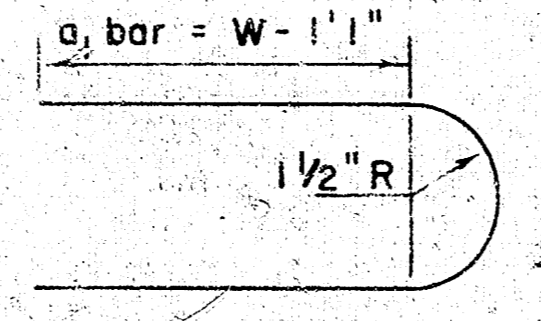
BAR NUMBER	a <sub>1</sub>	a <sub>2</sub>	b <sub>1</sub>	b <sub>2</sub>	b <sub>3</sub>	b <sub>4</sub>	WT. LBS.
8	4	4	4	4	4	4	60
7	4	4	4	4	4	4	77
6	4	4	4	4	4	4	97
5	4	4	4	4	4	4	111
4	4	4	4	4	4	4	124

\* NOTE: a<sub>2</sub> BARS TO BE PLACED APPROX. 2" BELOW TOP OF INLET COVER

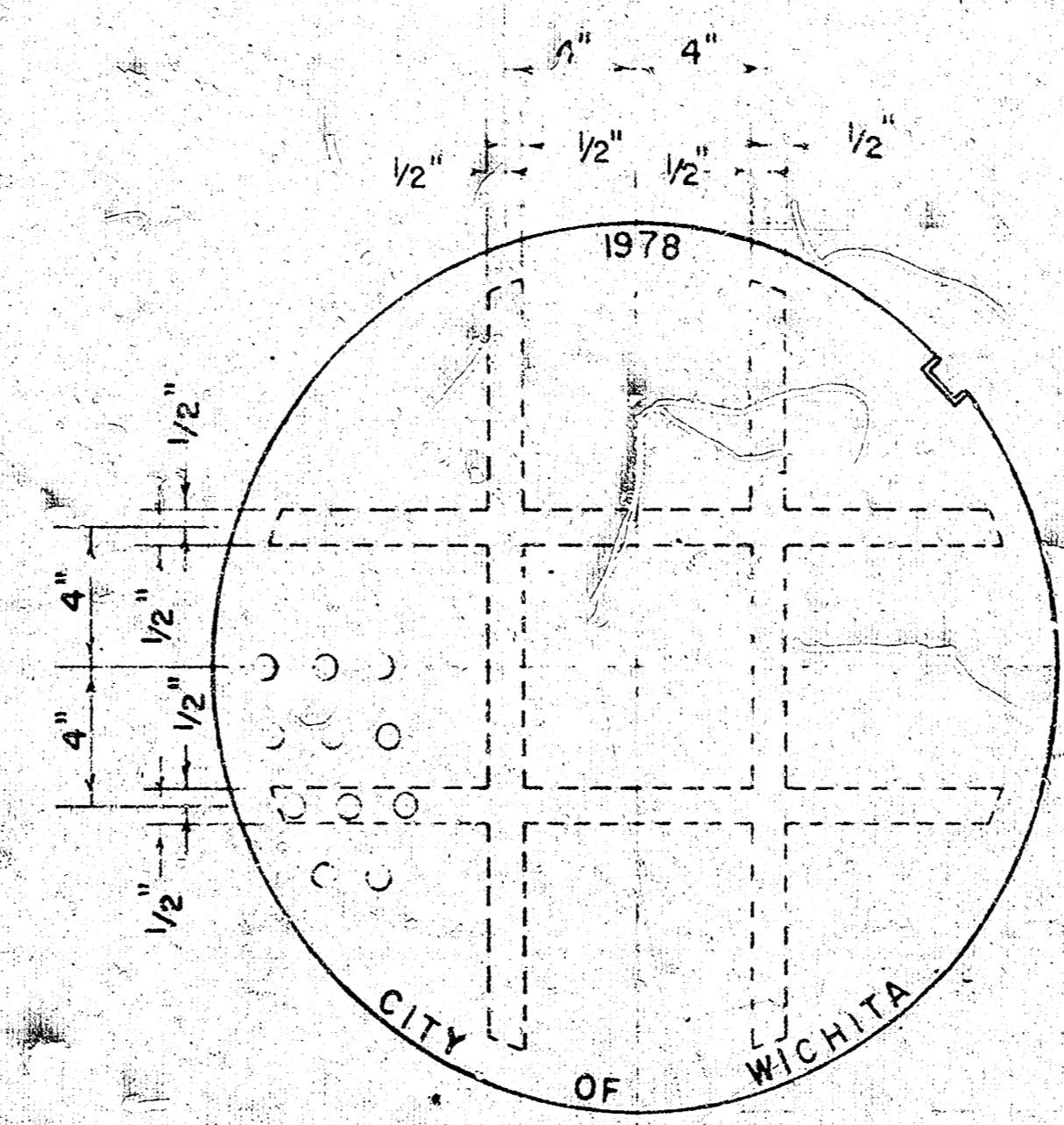
STANDARD CURB INLET PRECAST TOPS

W	PRE-CAST TOP SIZE	PIPE SIZE	CU. YD. CONC.
4'	36" x 5' 8 1/4" x 7 1/2"	21" & SMALLER	0.46 *
5' 0"	44" x 5' 8 1/4" x 7 1/2"	24" & 30"	0.57 *
6' 0"	54" x 5' 8 1/4" x 7 1/2"	36" & 42"	0.71 *
7' 0"	64" x 5' 8 1/4" x 7 1/2"	48" & 54"	0.84 *
8' 0"	74" x 5' 8 1/4" x 7 1/2"	60" & 66"	0.97 *

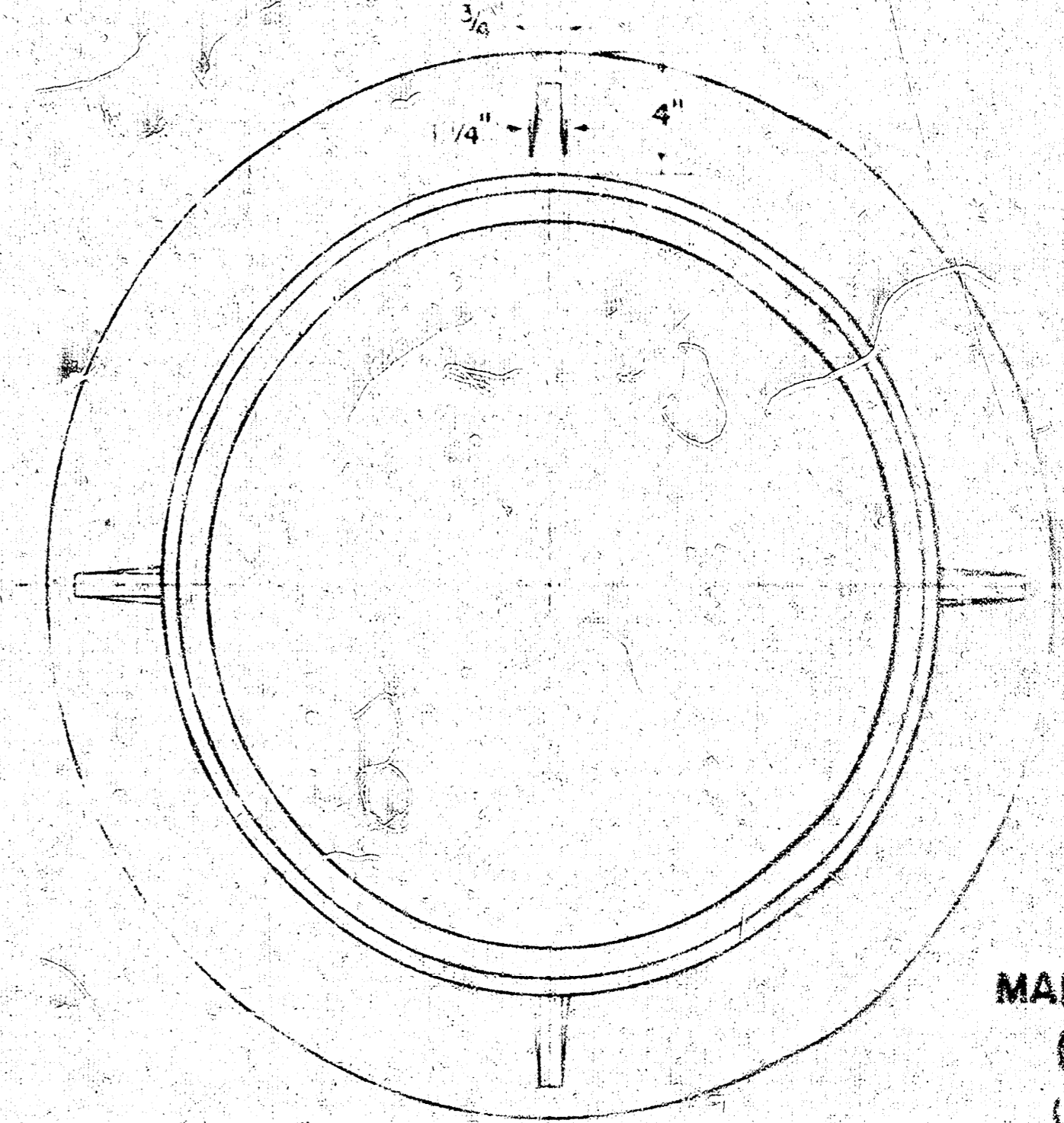
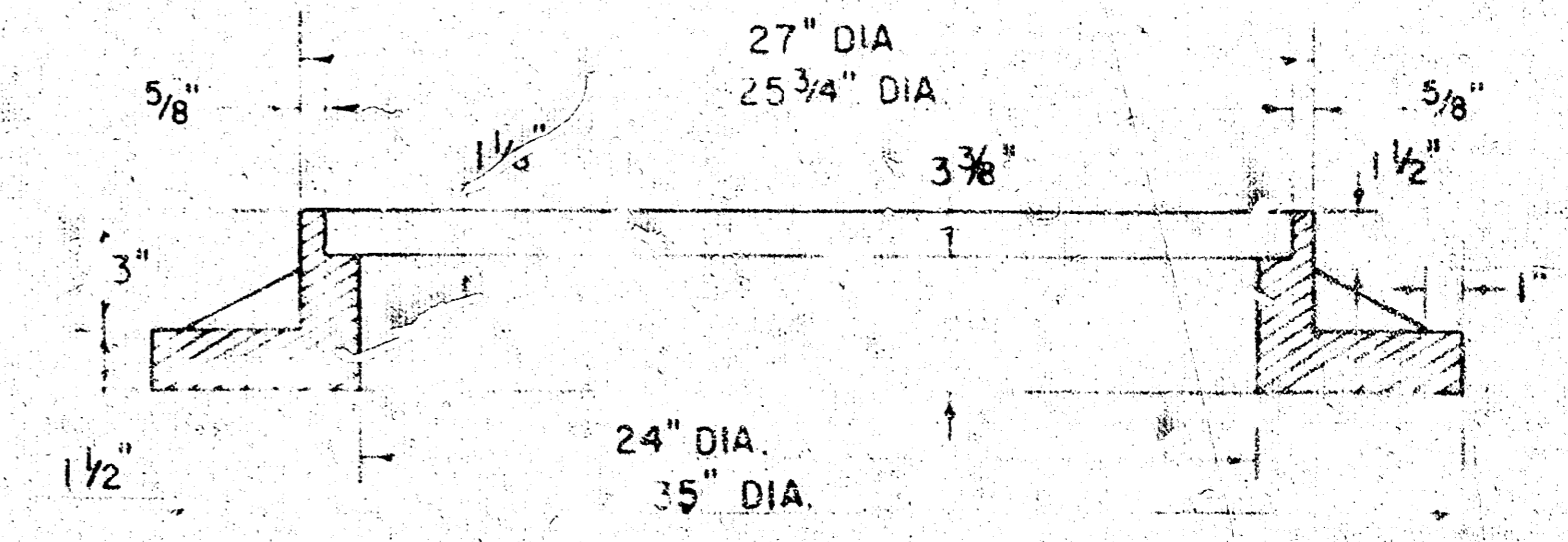
\* GROSS VOLUME



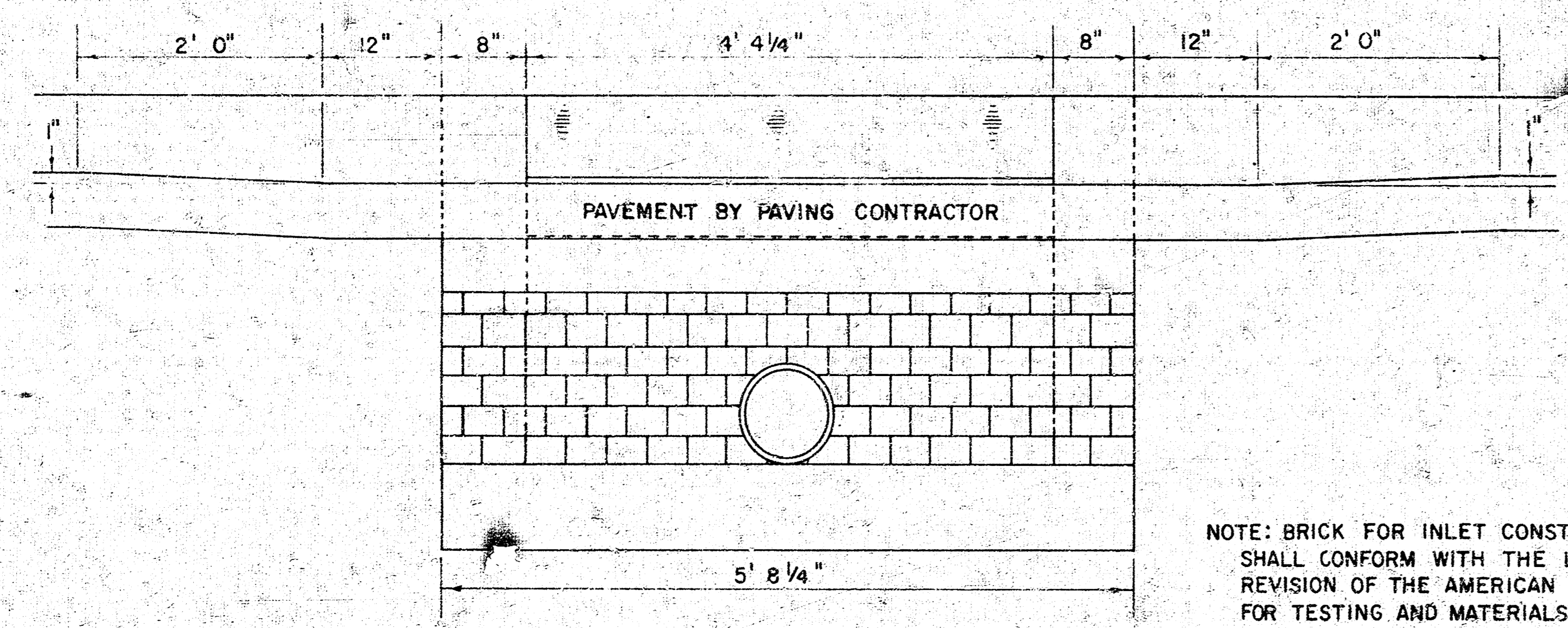
BENDING DIAGRAM



MANHOLE COVER (SCALE 1" = 6") WEIGHT = 170 LBS.

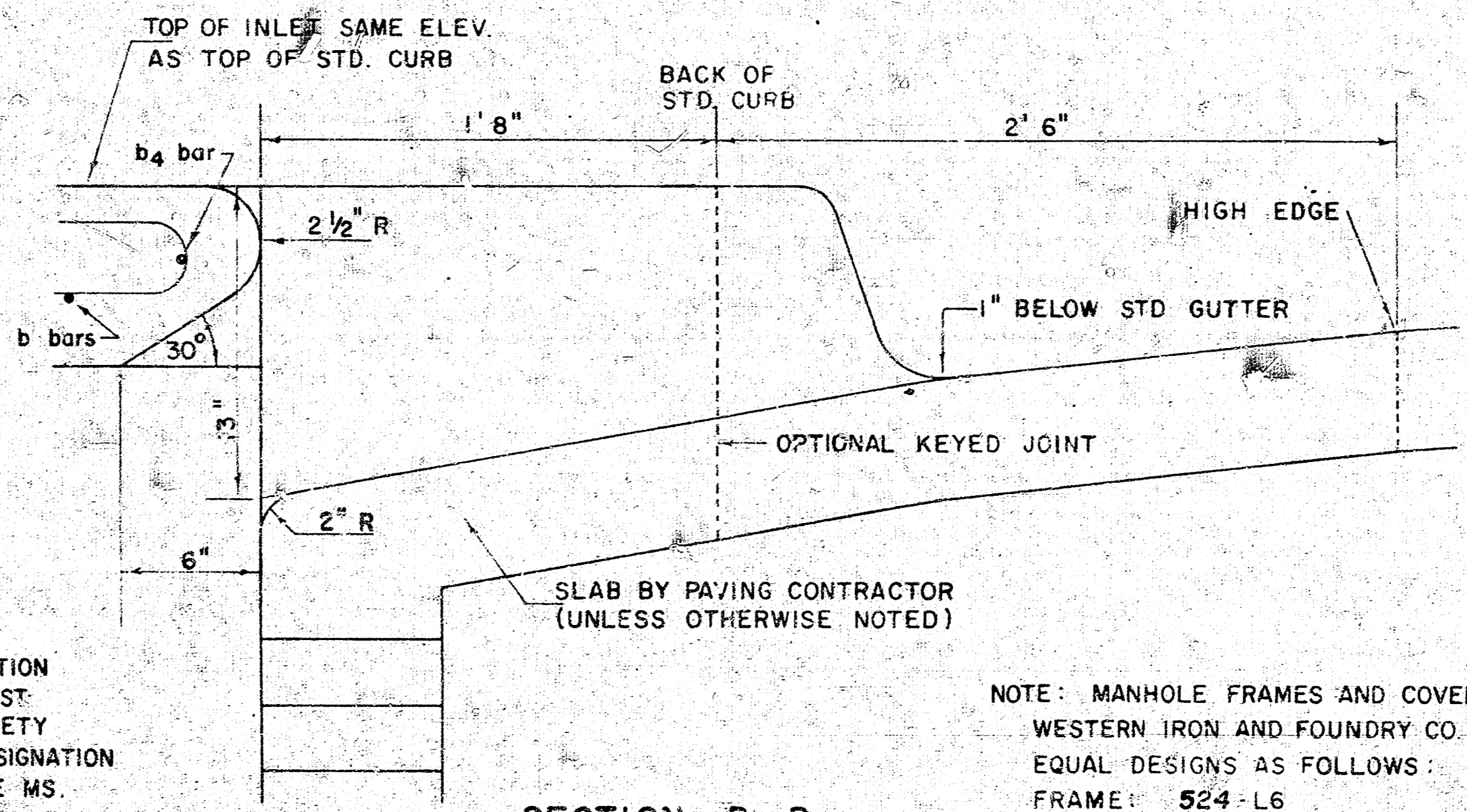


MANHOLE FRAME (ALTERNATE) (SCALE 1" = 6") WEIGHT = 180 LBS.



SECTION C-C (SCALE 1" = 1' 0")

NOTE: BRICK FOR INLET CONSTRUCTION SHALL CONFORM WITH THE LATEST REVISION OF THE AMERICAN SOCIETY FOR TESTING AND MATERIALS DESIGNATION C-32 FOR MANHOLE BRICK GRADE MS.



SECTION B-B (SCALE 1" = 6")

NOTE: MANHOLE FRAMES AND COVER ARE WESTERN IRON AND FOUNDRY CO. INC. OR EQUAL DESIGNS AS FOLLOWS:  
 FRAME: 524-L6  
 FRAME (ALTERNATE): 500 A4  
 COVER: 222 S4 "NOBBY"

PROJECT NO. 472-76-245-80843-000-000-001

DETAIL STANDARD TYPE IA CURB INLET  
 CITY OF WICHITA, KANSAS  
 DEAN SELLERS - ACTING CITY ENGINEER  
 OCTOBER 1978

B FILMED FROM THE BEST AVAILABLE COPY.....