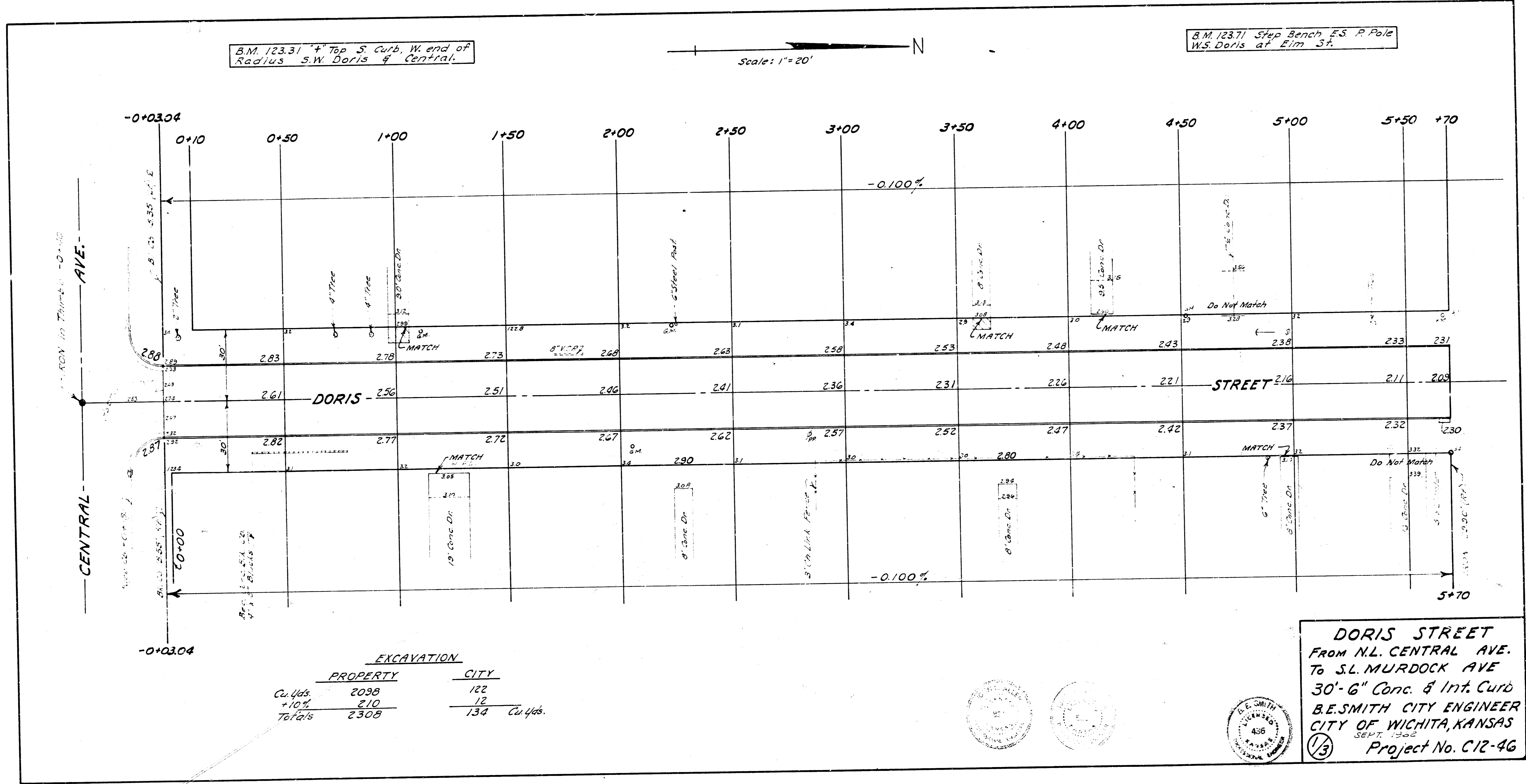


B.M. 123.31 + Top S. Curb, W. end of
Radius S.W. Doris & Central.

Scale: 1" = 20'

B.M. 123.71 Step Bench E.S. P. Pale
W.S. Doris at Elm St.



Summary, August 1, 1908
C. H. ...

EXCAVATION			
	PROPERTY	CITY	
Cu. Yds.	2038	122	
+ 10%	210	12	
Totals	2308	134	Cu. Yds.

DORIS STREET
FROM N.L. CENTRAL AVE.
TO S.L. MURDOCK AVE
30'-6" Conc. & Int. Curb
B.E. SMITH CITY ENGINEER
CITY OF WICHITA, KANSAS
SEPT. 1908
Project No. C.12-46

