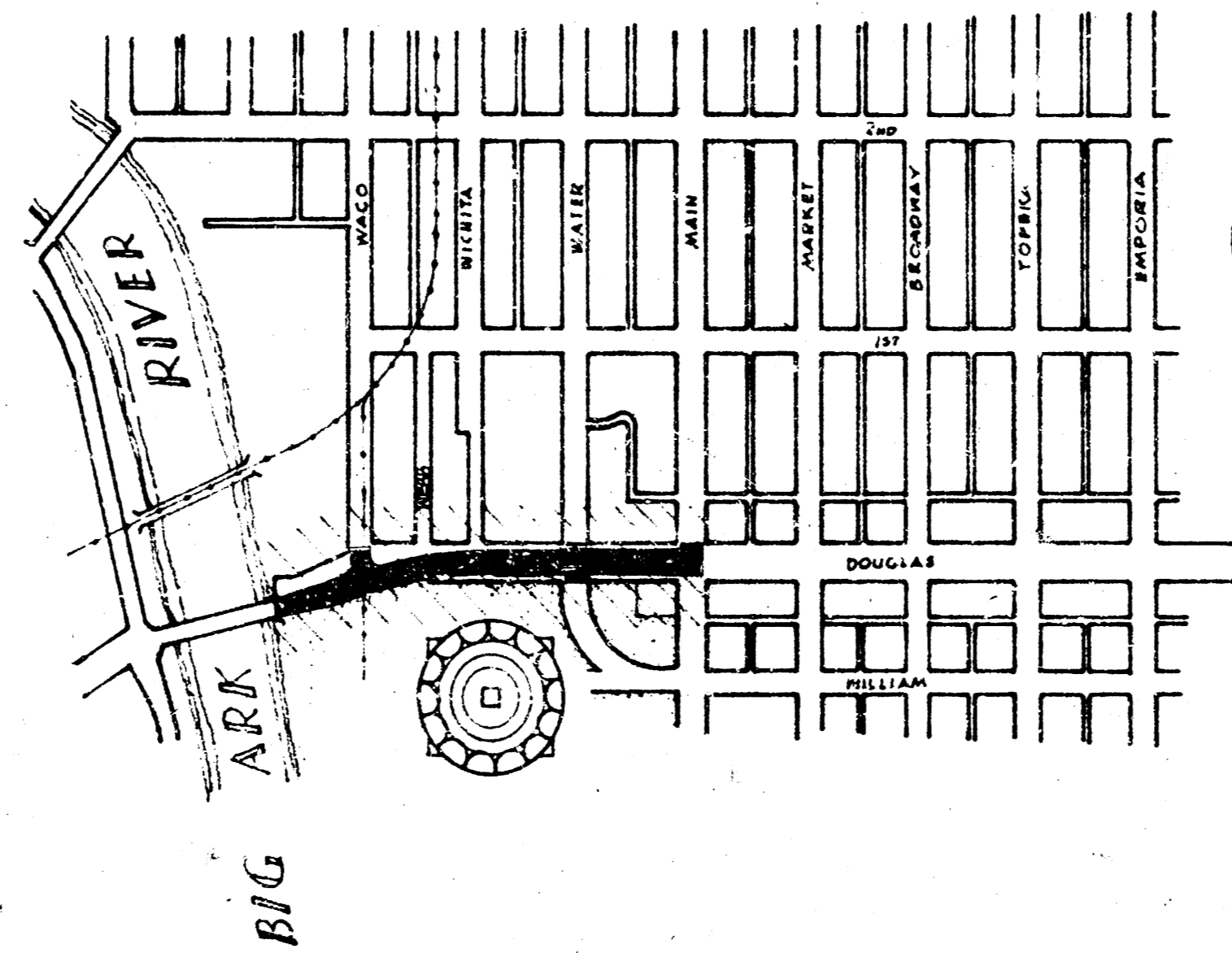
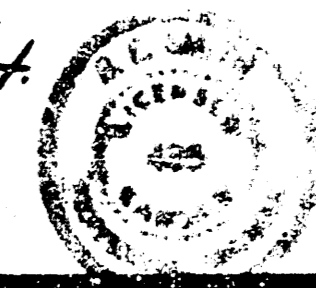


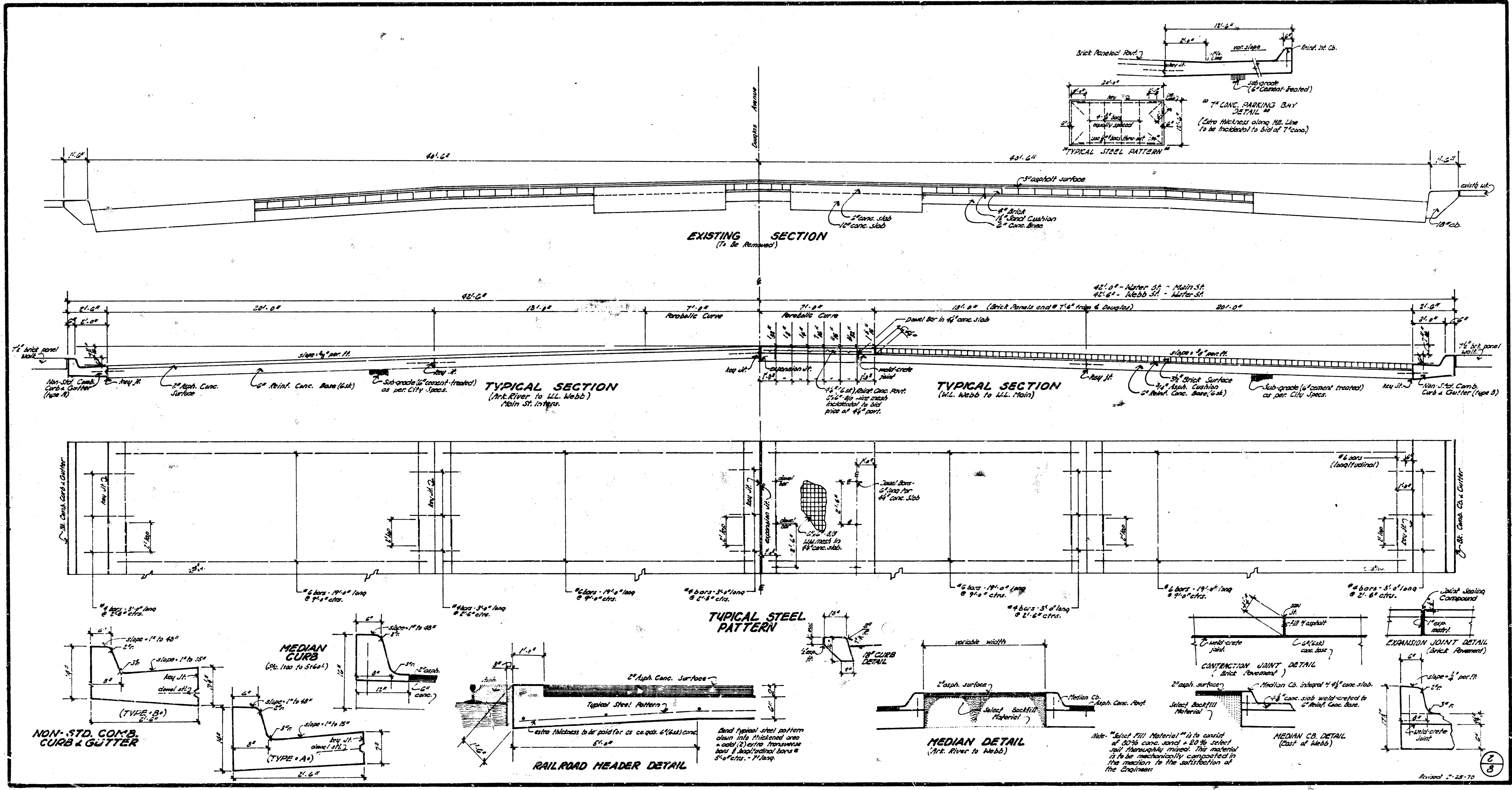
— STREET IMPROVEMENT —



- INDEX OF SHEETS
- 1. Title Sheet and Project Nos.
  - 2. Street & Curb Details - Street typical section
  - 3. Construction Detail Sheet
  - 4. " " " " " "
  - 5. Bridge Panel Construction Sheet
  - 6. " " " " " Details

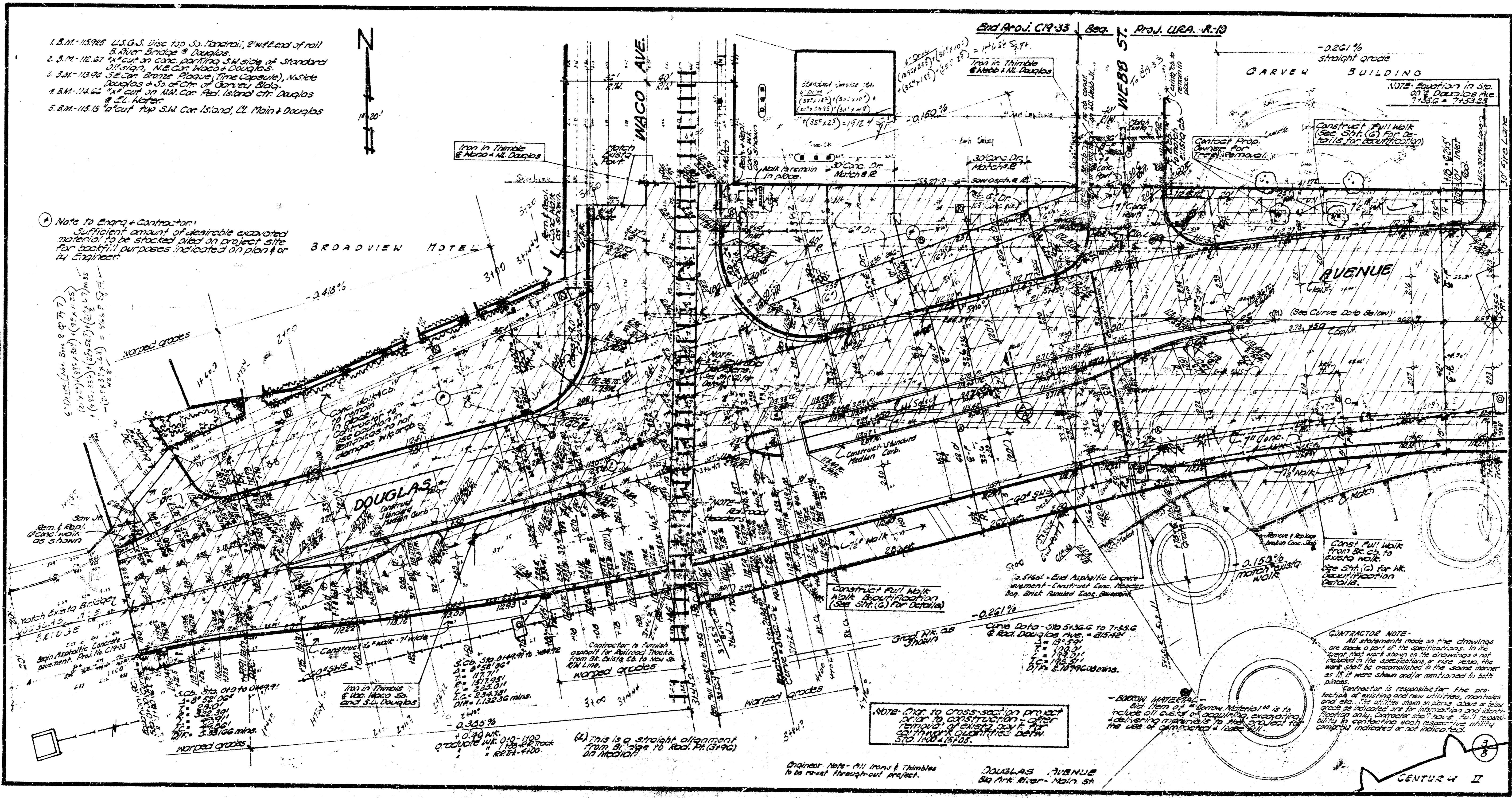
URBAN RENEWAL AGENCY  
of the  
WICHITA, KANSAS METROPOLITAN AREA  
CIVIC CENTER PROJECT - KANSAS R-19  
**DOUGLAS AVENUE**  
*Big Arkansas River to Main St.*  
DEPARTMENT OF PUBLIC WORKS  
CITY OF WICHITA, KANSAS  
B. E. SMITH ..... CITY ENGINEER  
ROLL NO. C19-33 & C19-34





1. B.M. 10595 U.S.G.S. Elev. 100.50 S.W. Corner, 2nd End of rail & River Bridge @ Douglas.
2. B.M. 10597 "Cut on conc. parking S.W. side of Standard Oil Bldg. N.W. Cor. Webb & Douglas.
3. B.M. 10598 "Cut on conc. bridge (The Capote), N.W. side Douglas & S.W. Cor. of Garvey Bldg.
4. B.M. 10599 "Cut on NW Cor. Red Island City Douglas & E. Market.
5. B.M. 10600 "Cut on S.W. Cor. Island, E. Main & Douglas.

Note to Engng & Contractor:  
Sufficient amount of desirable excavated material to be stockpiled on project site for possible purposes indicated on plan & or by Engineer.



Scale 1" = 40'

Match Lines  
See also  
Plan of Douglas Avenue  
at Douglas & Webb

(1) This is a straight alignment  
from Douglas Ave. to Red Mt. (Grd.)  
on the plan.

NOTE: Care to cross-section project  
prior to construction - other  
features of existing site for  
quantity estimates.

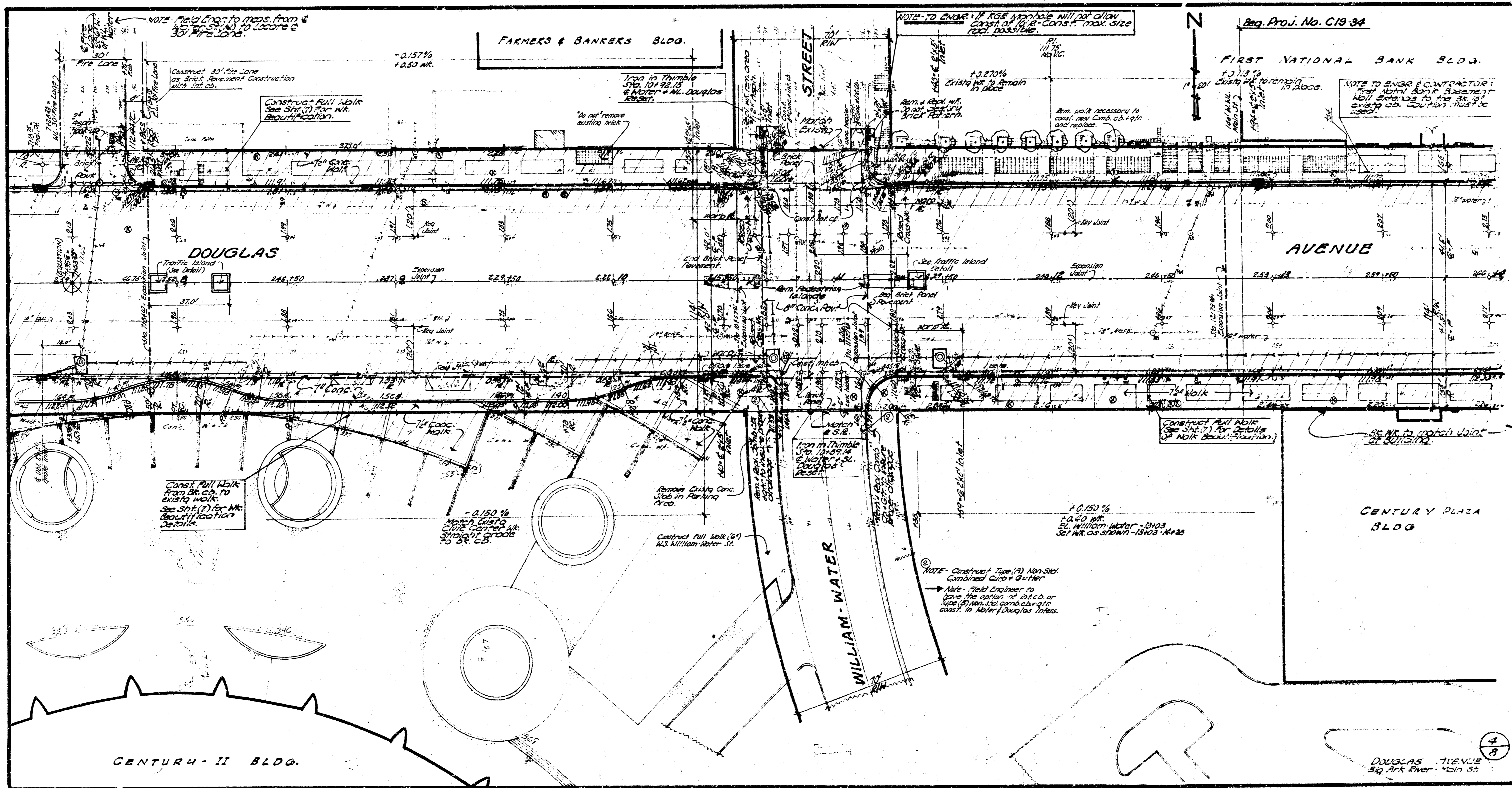
Contractor Note - All trees & shrubs  
to be removed throughout project.

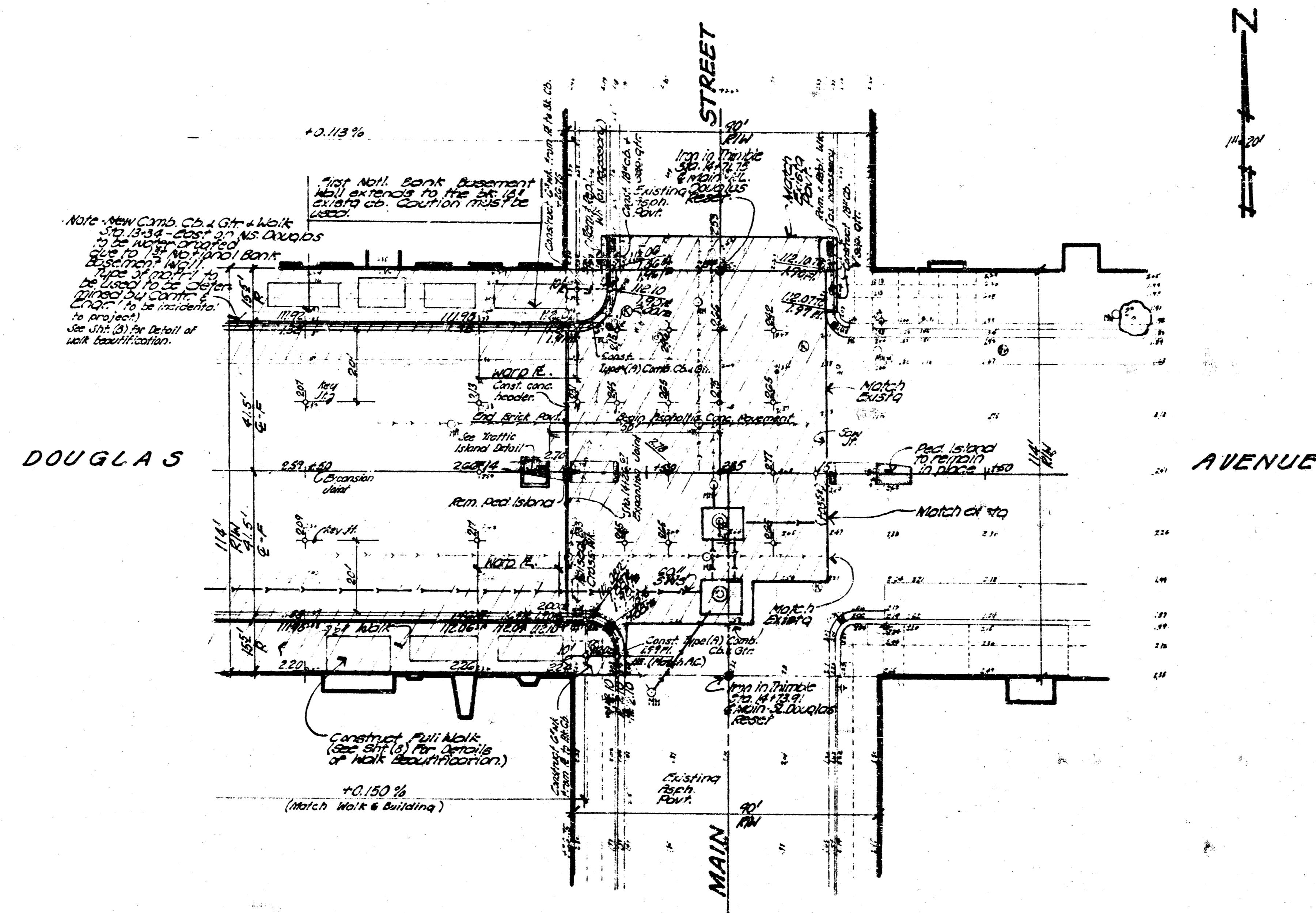
DOUGLAS AVENUE  
Bldg. Ark River - Main St.

BURDEN MATERIAL  
See also plan of "Burden Material" in  
plan of Douglas Avenue at Douglas & Webb  
for information and identify  
location of Burden Material. See also  
bill to contractor each respect to  
quantity indicated or not indicated.

CONTRACTOR NOTE:  
All statements made on these drawings  
are made on the basis of the specifications, in the  
plan and as shown on the drawings & not  
included in the specifications or here stated. The  
work shall be completed in the same manner  
as if it were shown and/or mentioned in both  
places.  
Contractor is responsible for the  
protection of existing and new utilities, manholes  
and pits. The utility clean openings, sizes or  
grades as indicated on the drawings and identify  
location of each. Contractor shall have full  
responsibility for contacting each respective utility  
company indicated or not indicated.

CENTUS - II

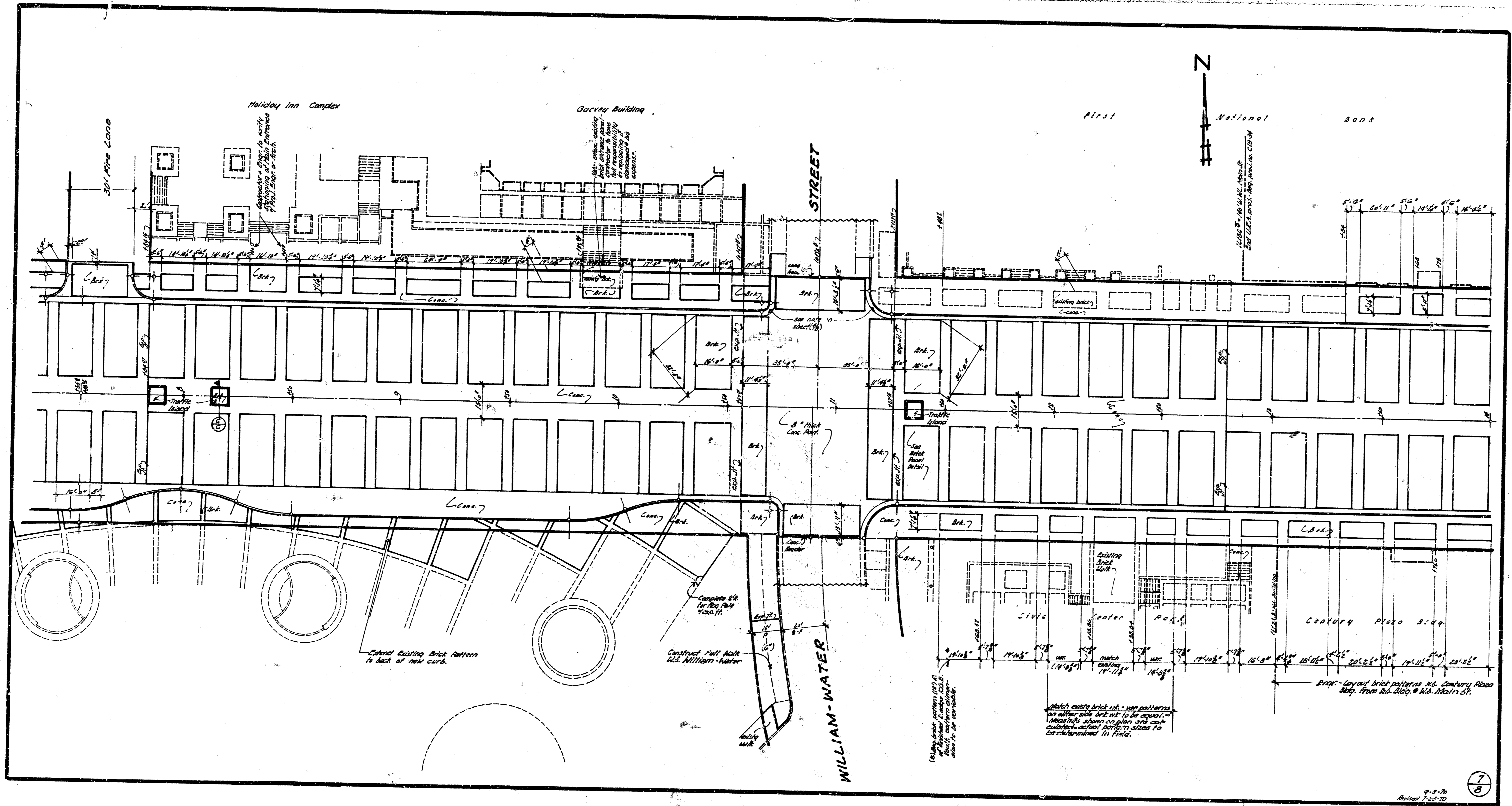


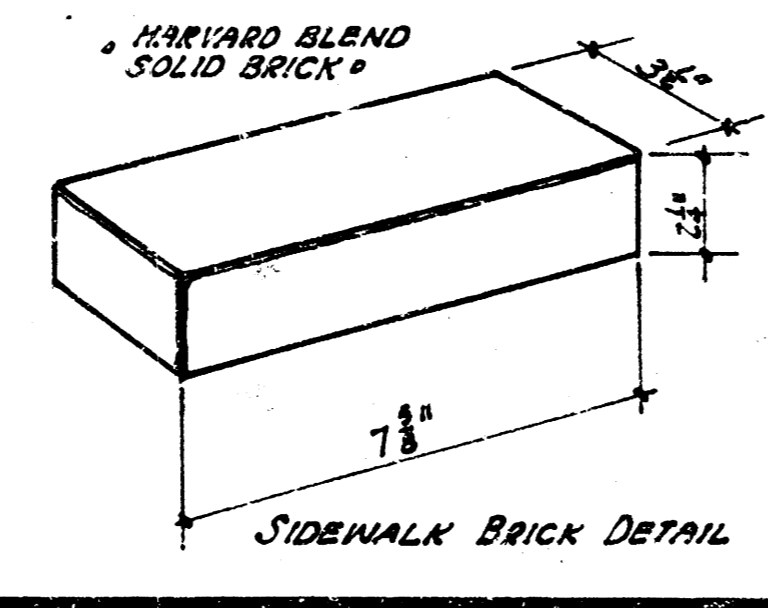
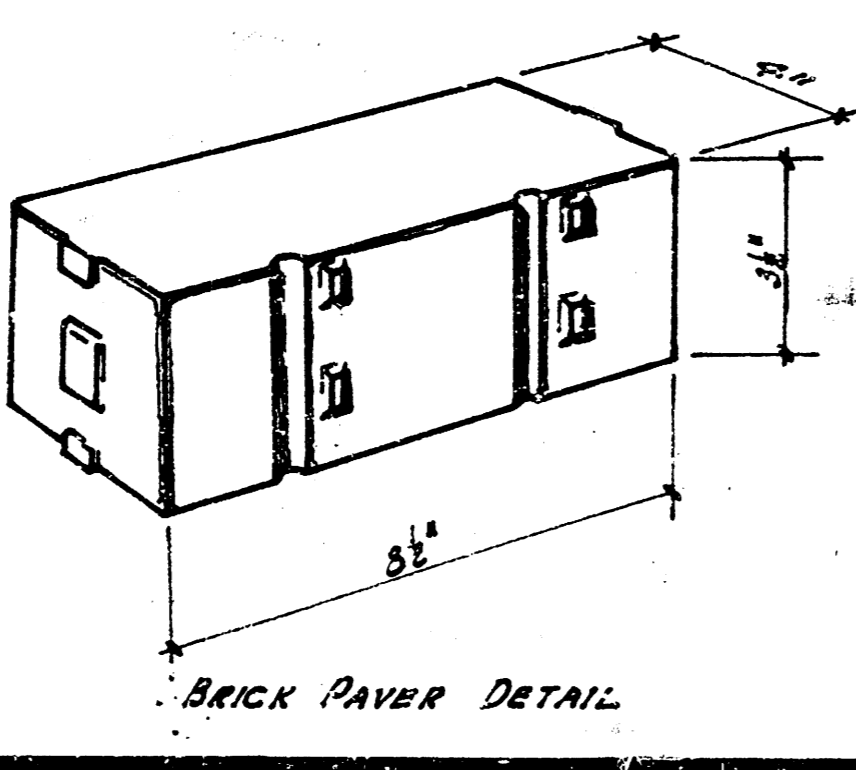
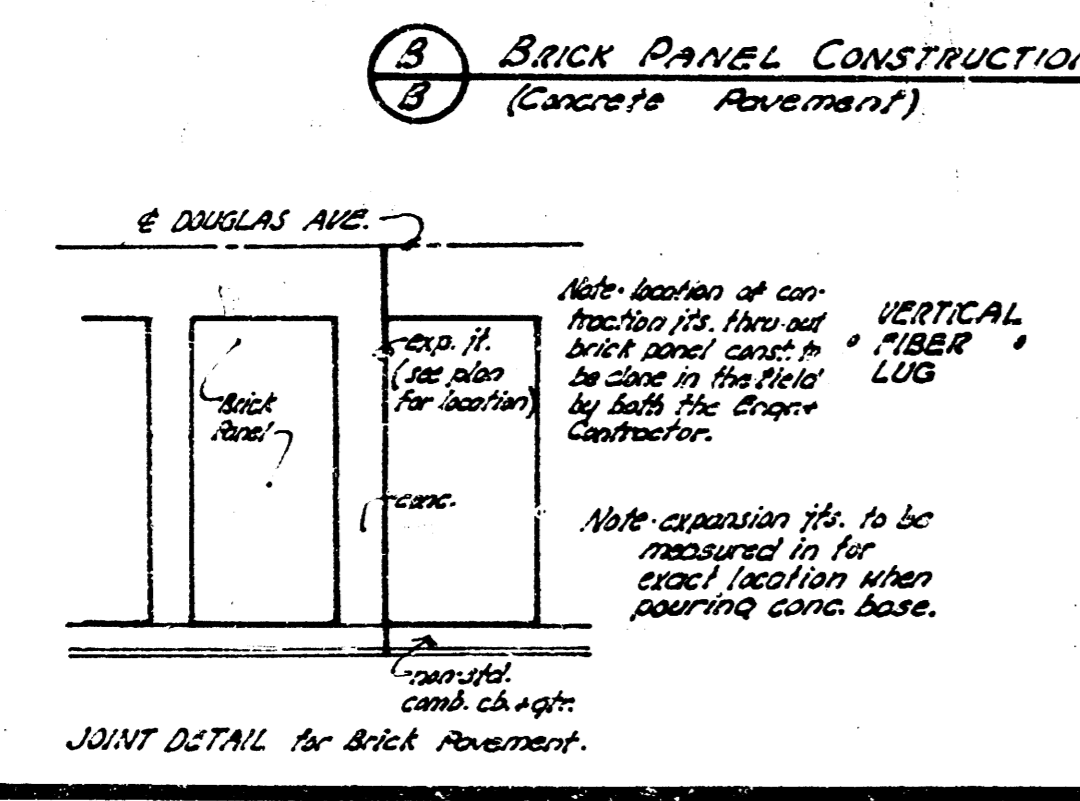
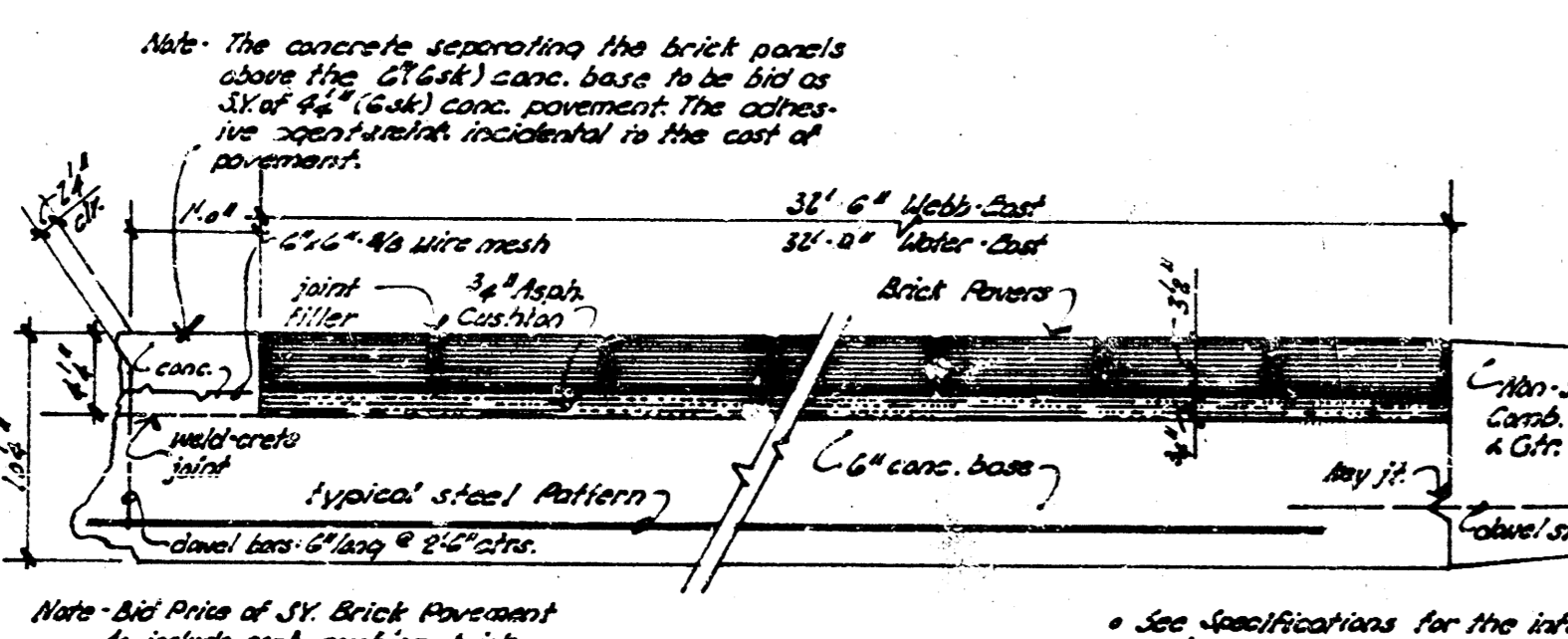
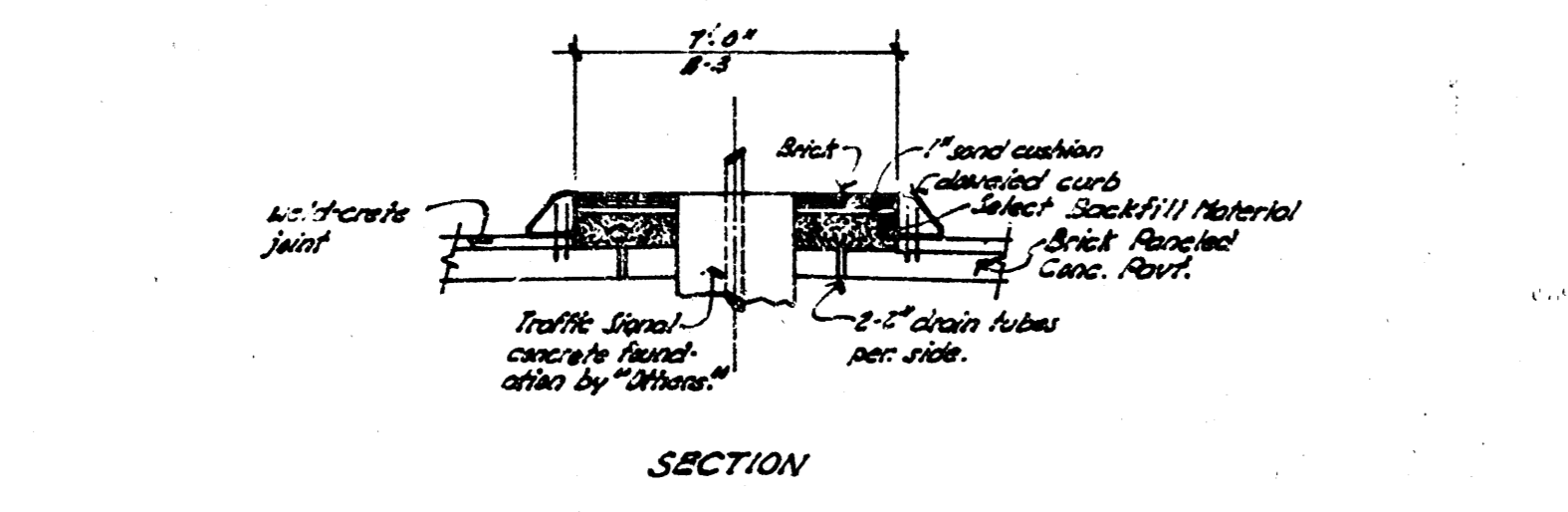
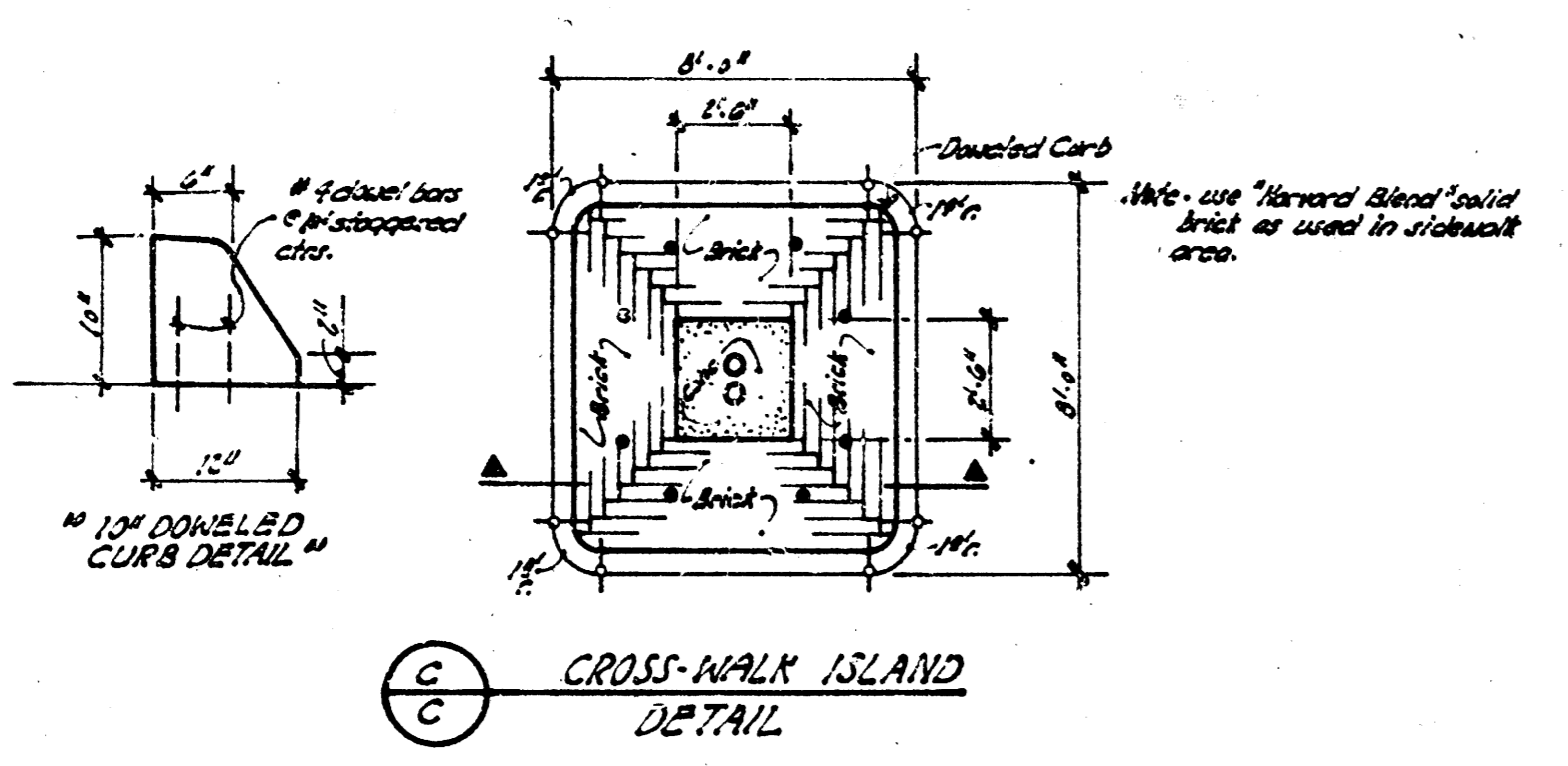
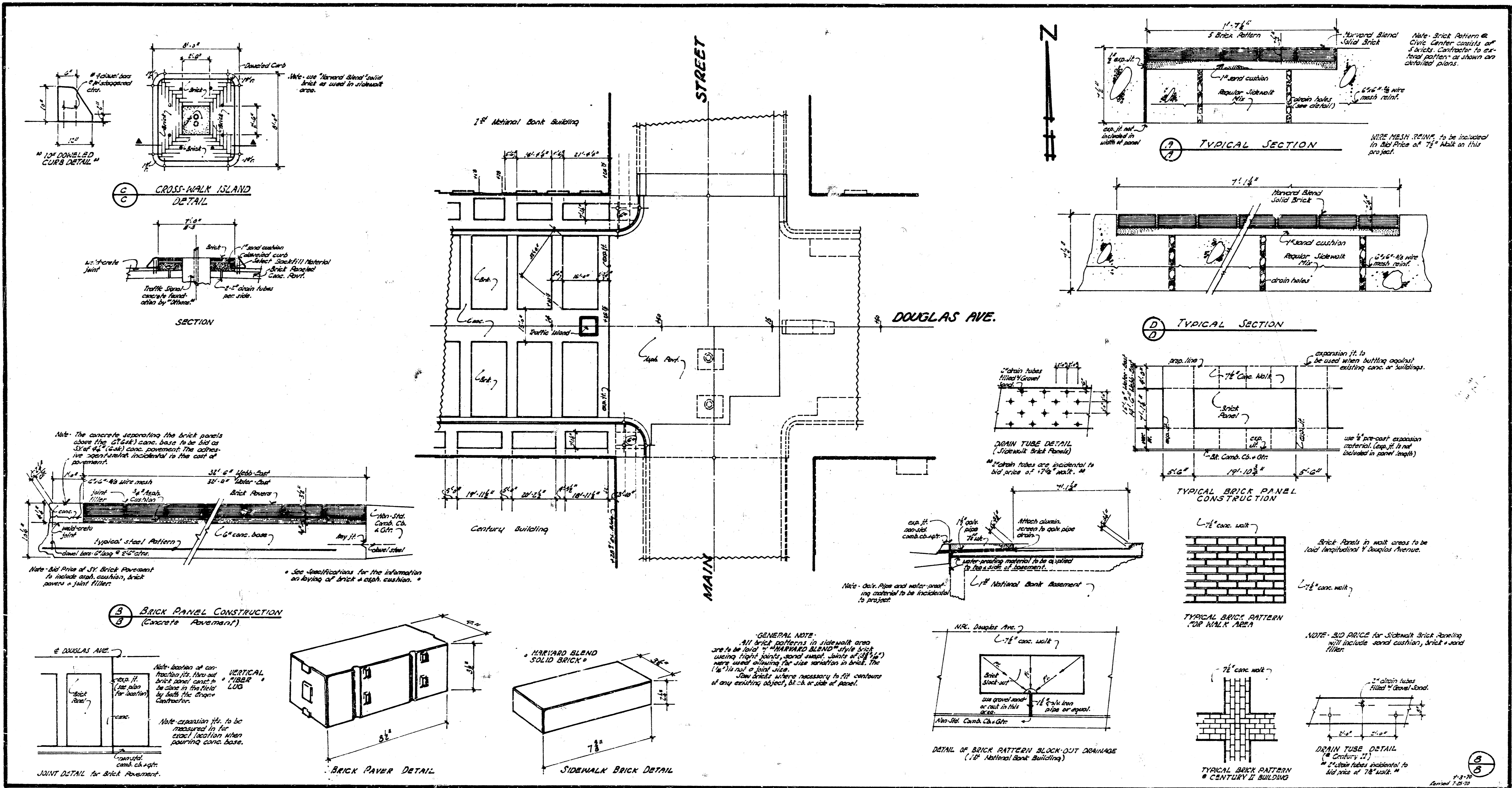


5  
8

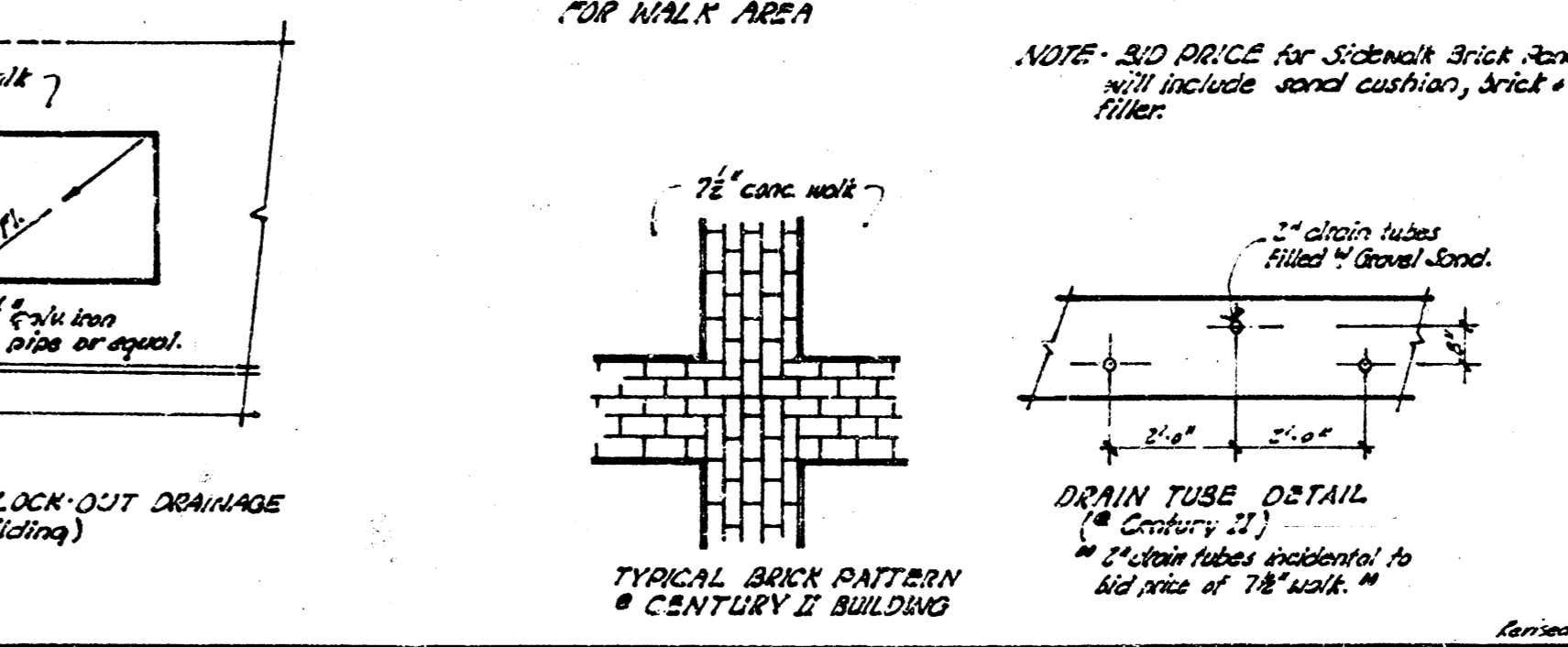
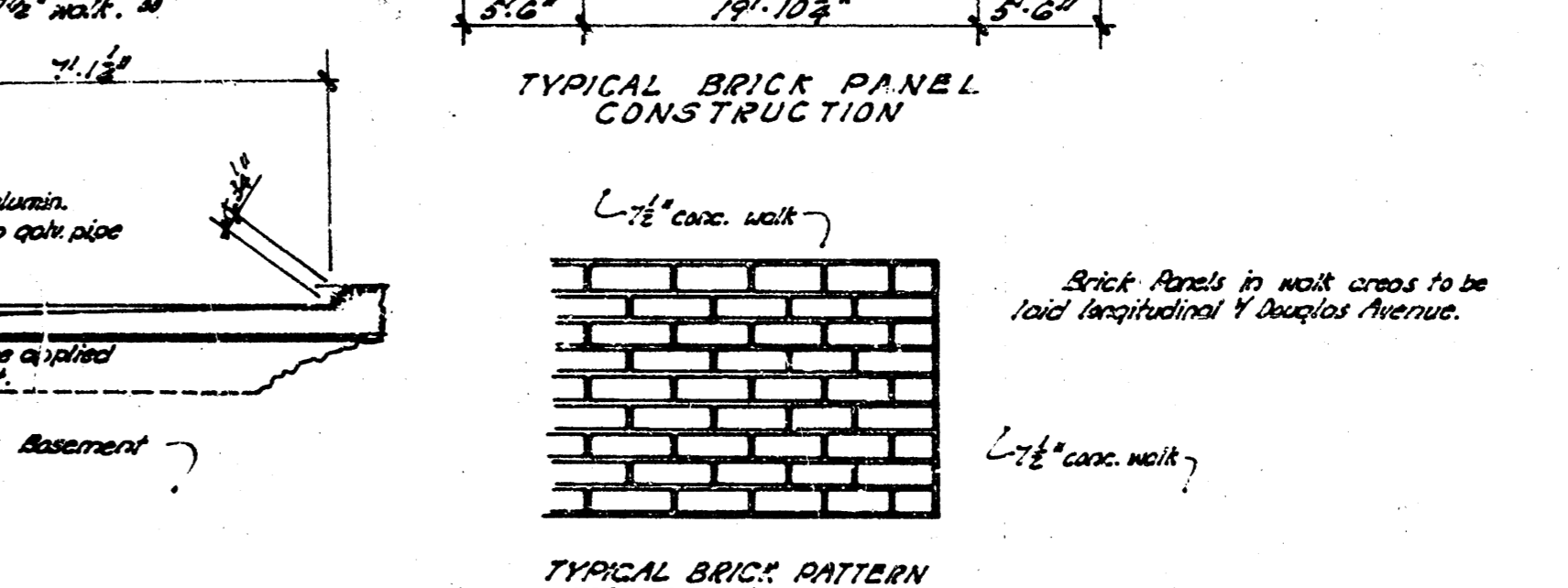
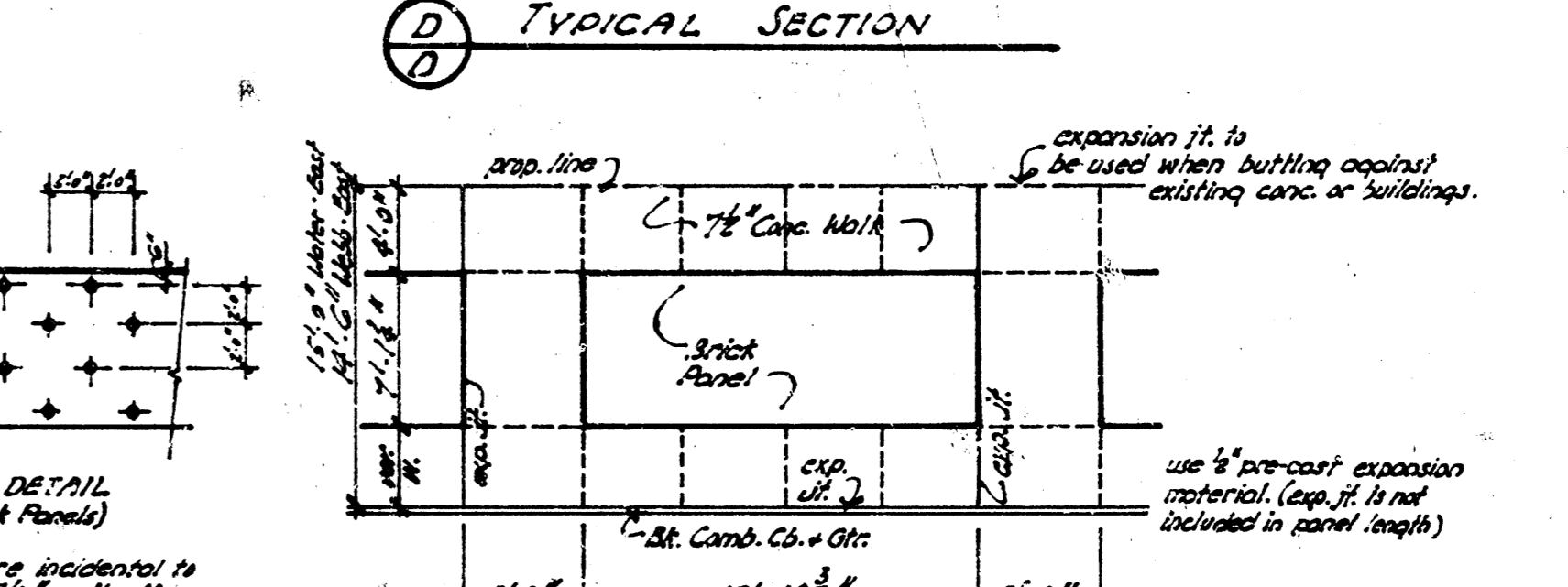
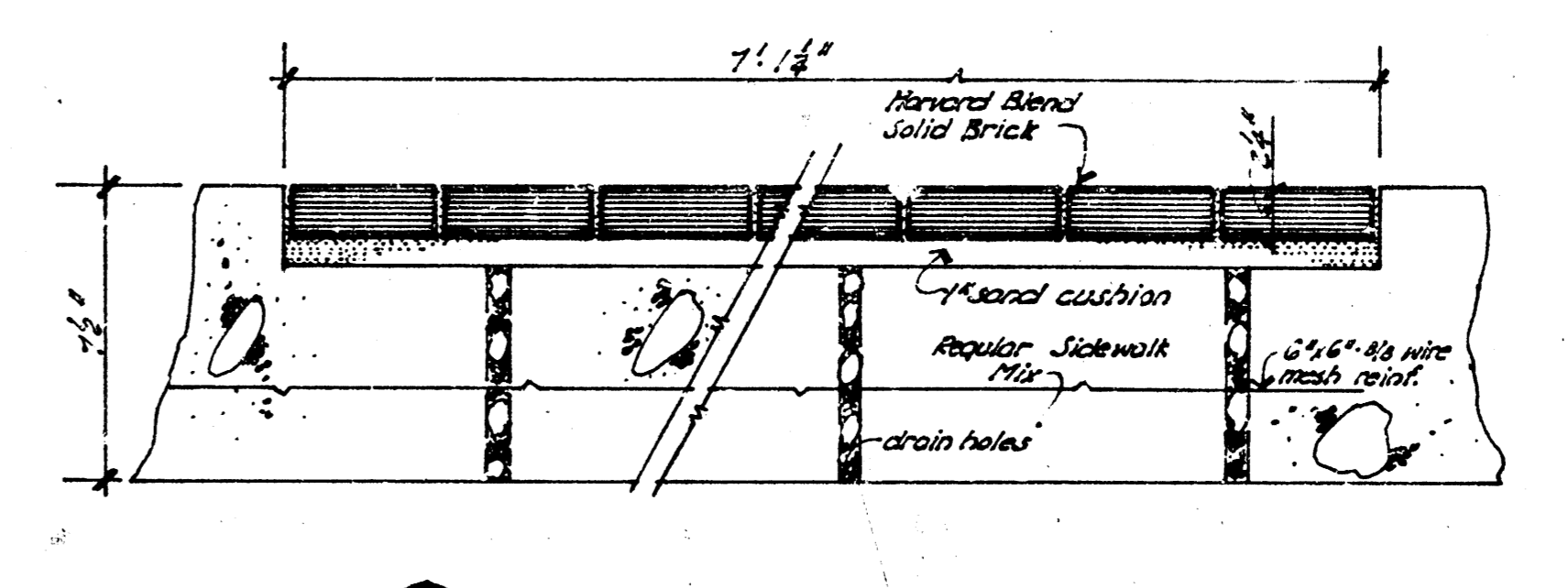
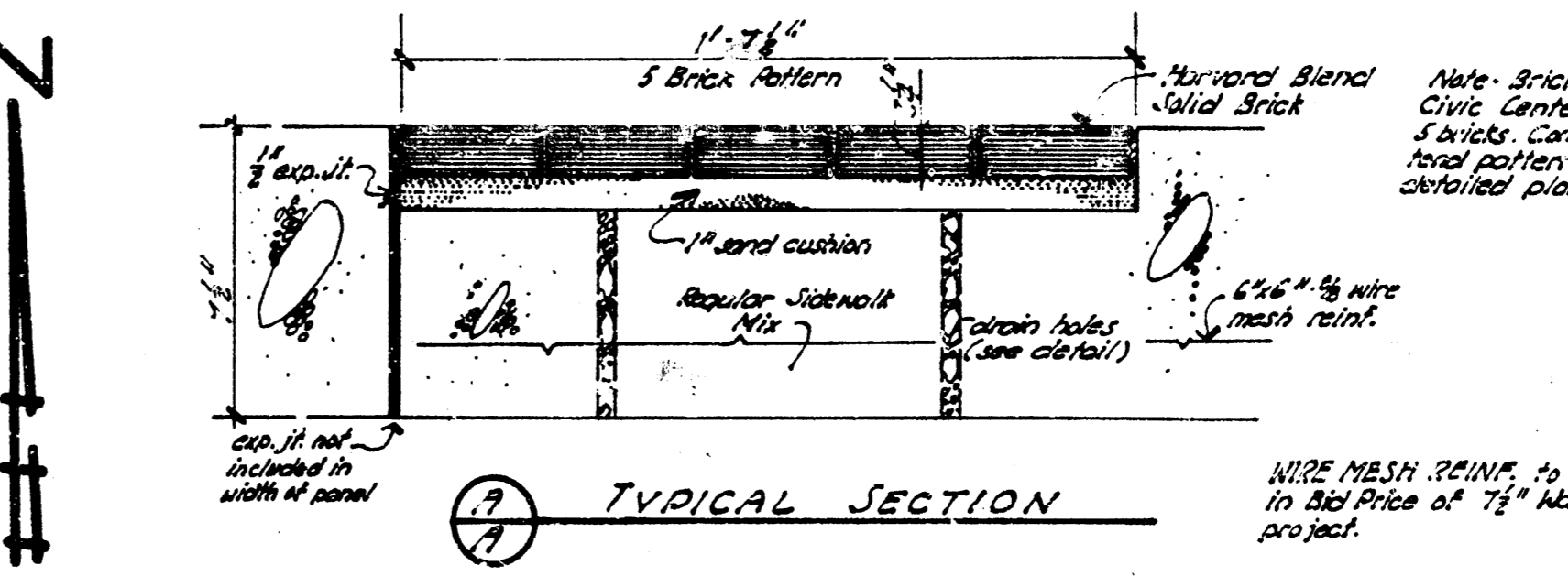
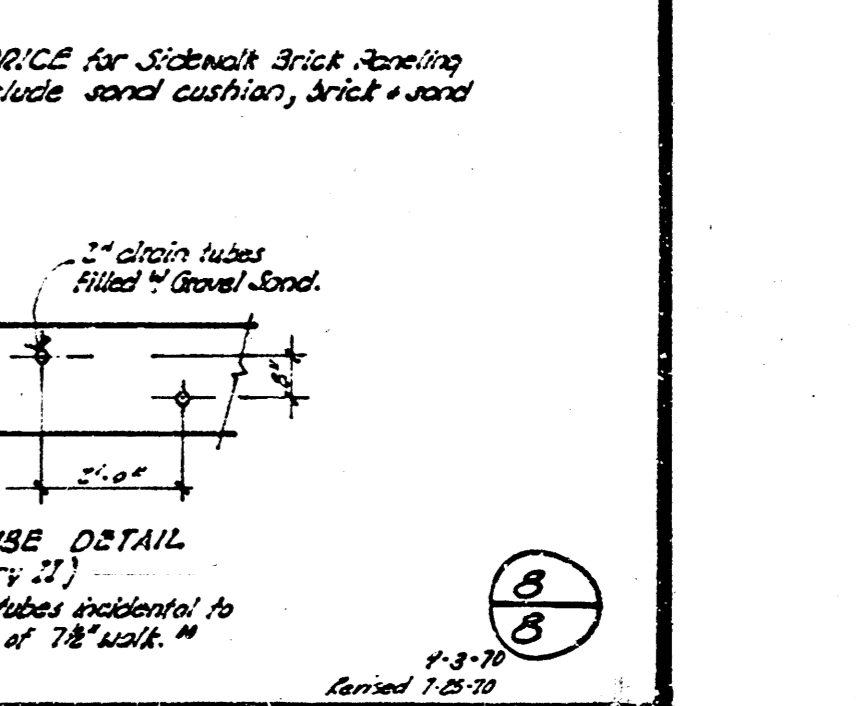
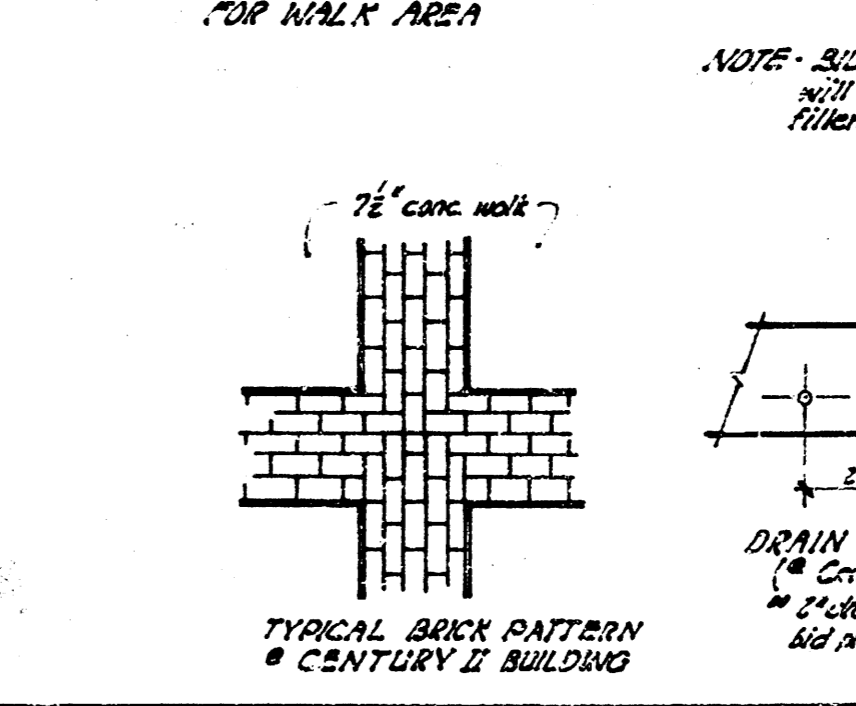
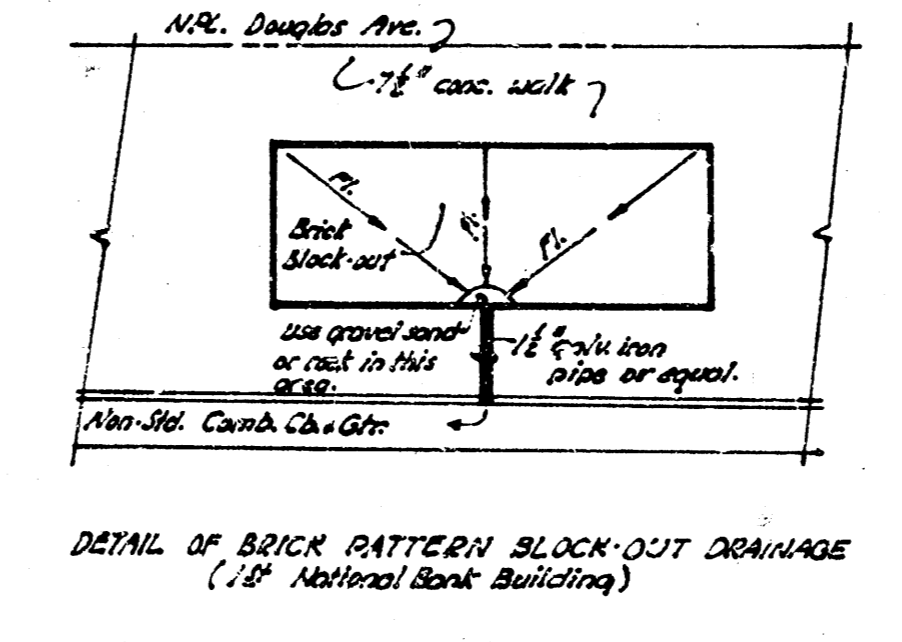
DOUGLAS AVENUE  
Big. Art. River - Main St.







**GENERAL NOTE:**  
 All brick patterns in sidewalk area are to be laid in HARVARD BLEND style brick using tight joints, sand cushion, mortar of 1/2" (1/2" is not a joint size).  
 Joint bricks where necessary to fit contours of any existing object, brick on side of panel.



Note: Brick Patterns at Civic Center consist of 1/2" brick, contractor to establish pattern or shown on detailed plans.

NOTE: MESH REINFORCEMENT to be included in Bid Price of 7/8" walk on this project.

expansion fit to be used when butting against existing curb or buildings.

use 1/2" coarse expansion material (cap, if not included in panel length).

1/2" conc. walk

1/2" conc. walk

1/2" conc. walk

NOTE: BID PRICE for sidewalk brick pavers with include sand cushion, brick & joint filler.

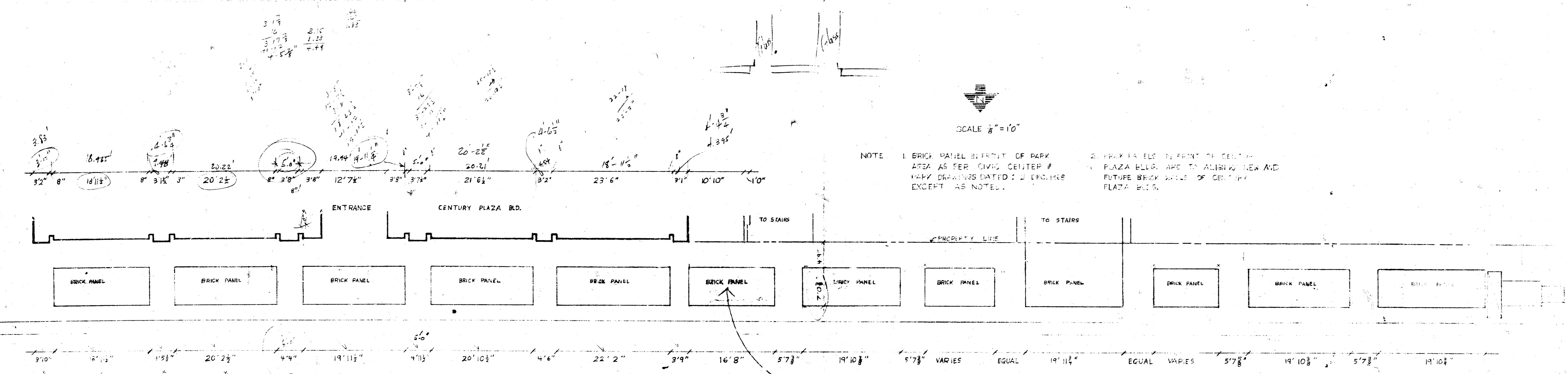
1/2" drain tubes filled & covered.

1/2" drain tubes incidental to bid price of 7/8" walk.

1/2" National Bank Assessment

1/2" National Bank Assessment





SCALE 1/8" = 10'

NOTE 1 BRICK PANEL IN FRONT OF PARK AREA AS PER CIVIC CENTER # 2 BRICK PANELS IN FRONT OF CENTURY PLAZA BLD. ARE TO ALIGN WITH AND FUTURE BRICK WALL OF CENTURY PLAZA BLD.

DOUGLAS AVE.

THIS PANEL HAS BEEN REDUCED IN SIZE TO ALIGN W/ CENTURY PLAZA WEST WALL.

REVISE PLAN FROM ARCHITECT RECEIVED 9-2-76 FROM GARY ROUSH URA.