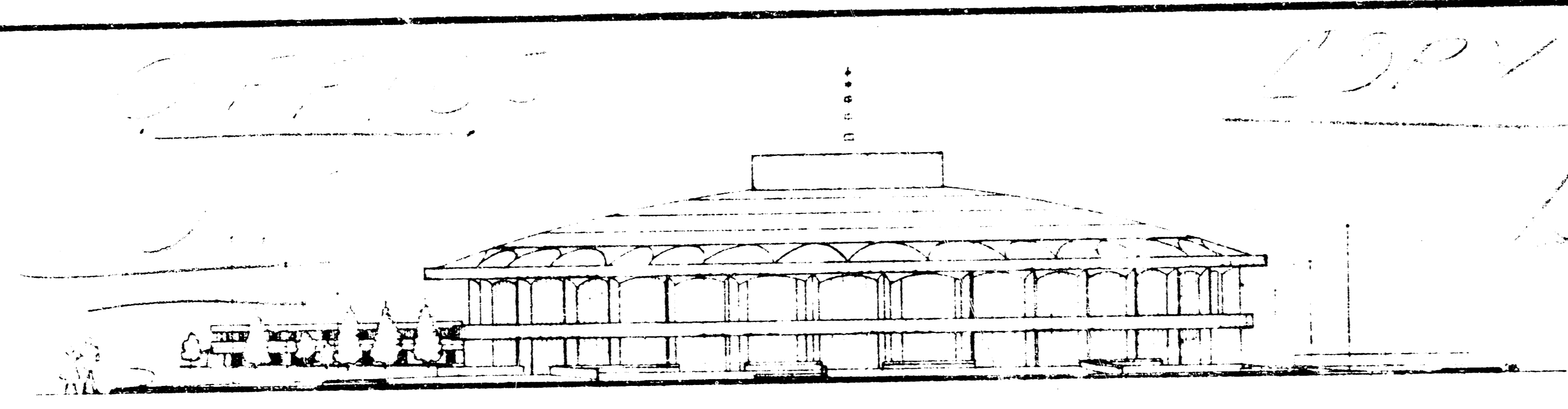
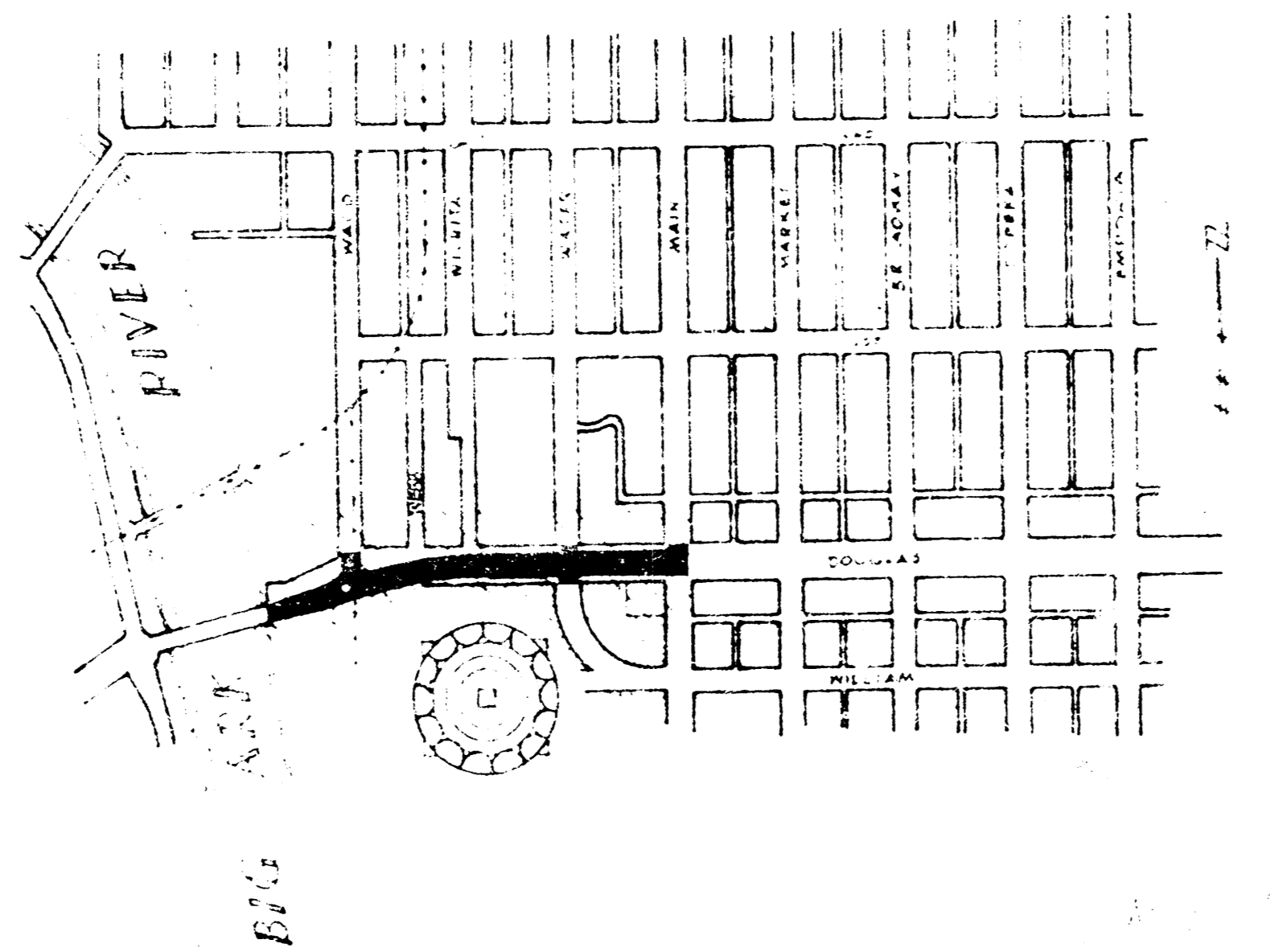


TYPED BY: [illegible]
 CHECKED BY: [illegible]
 REVIEWED BY: [illegible]
 DRAWN BY: [illegible]
 DATE: [illegible]
 APPROVAL: [illegible]
 PAVED SIDEWALKS
 PAVED DRIVEWAYS
 PAVED PARKING SPACES



— STREET IMPROVEMENT —



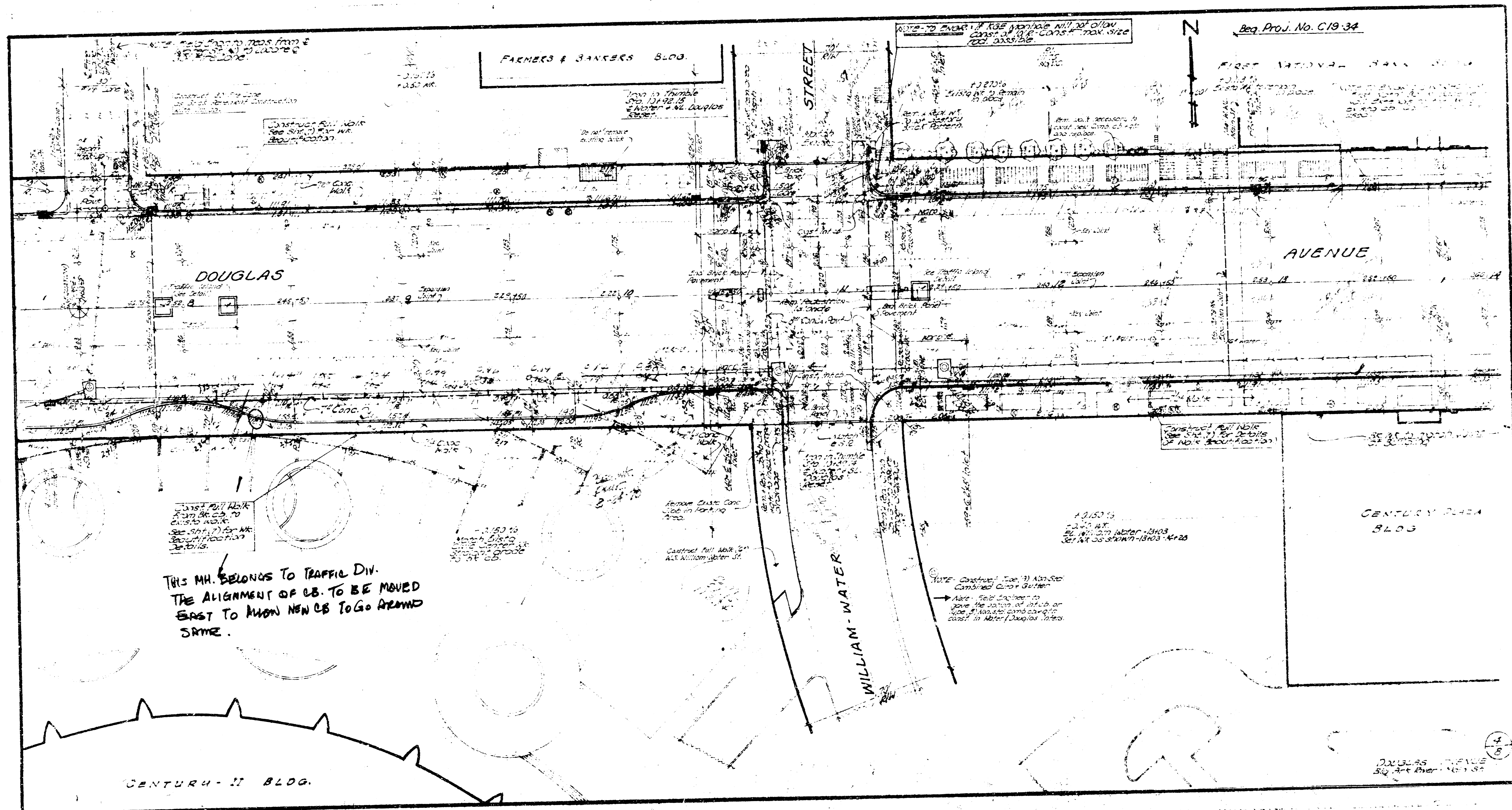
Handwritten notes:
 Proposed street improvement
 Douglas Avenue
 from [illegible] to [illegible]
 including [illegible]

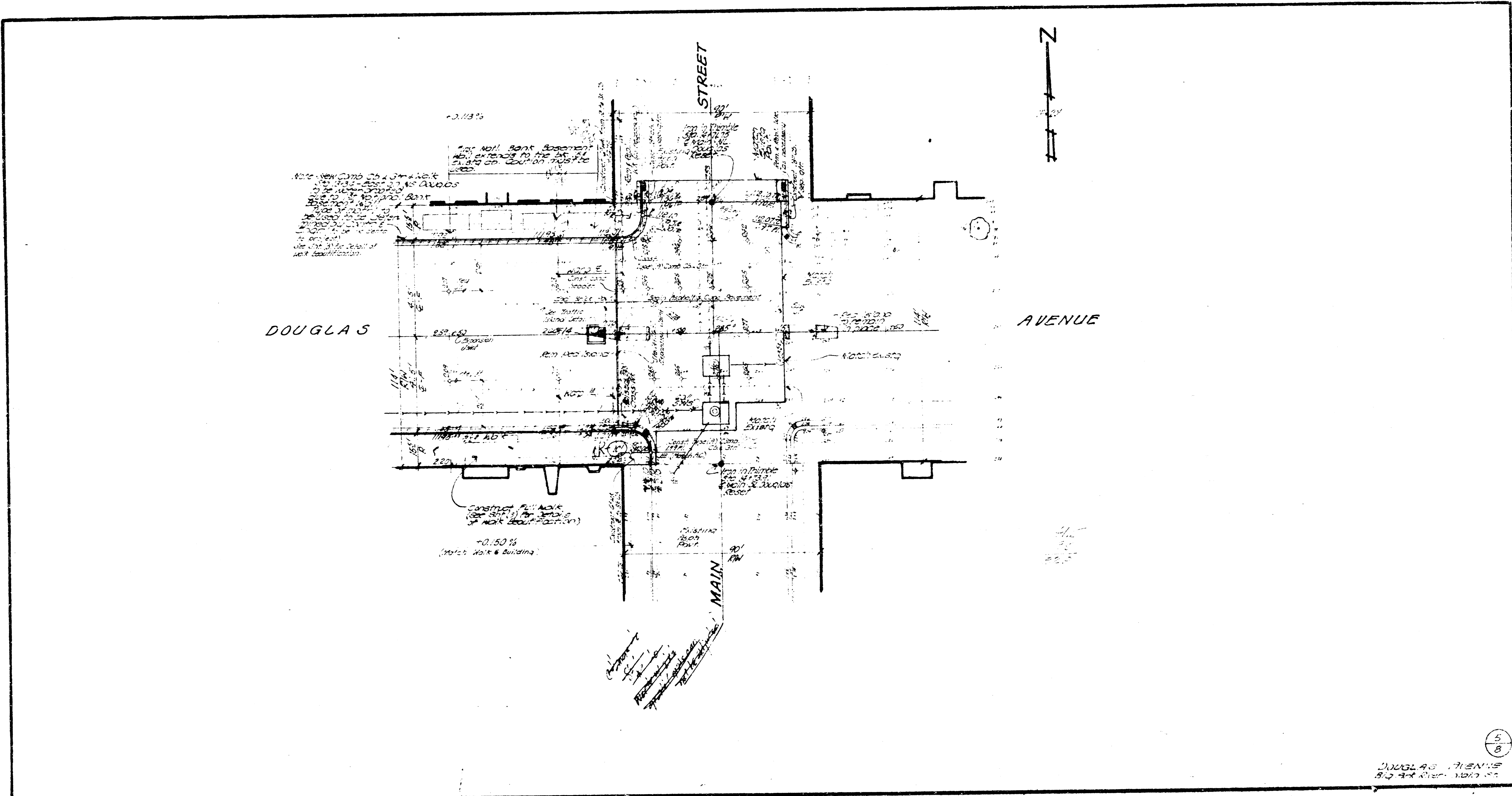
URBAN RENEWAL AGENCY
 of the
 WICHITA, KANSAS METROPOLITAN AREA
 CIVIC CENTER PROJECT - KANSAS R-19
 DOUGLAS AVENUE

DEPARTMENT OF PUBLIC WORKS
 CITY OF WICHITA, KANSAS
 B.E. SMITH CITY ENGINEER
 DRAWING NO. C19-38 #C19-07

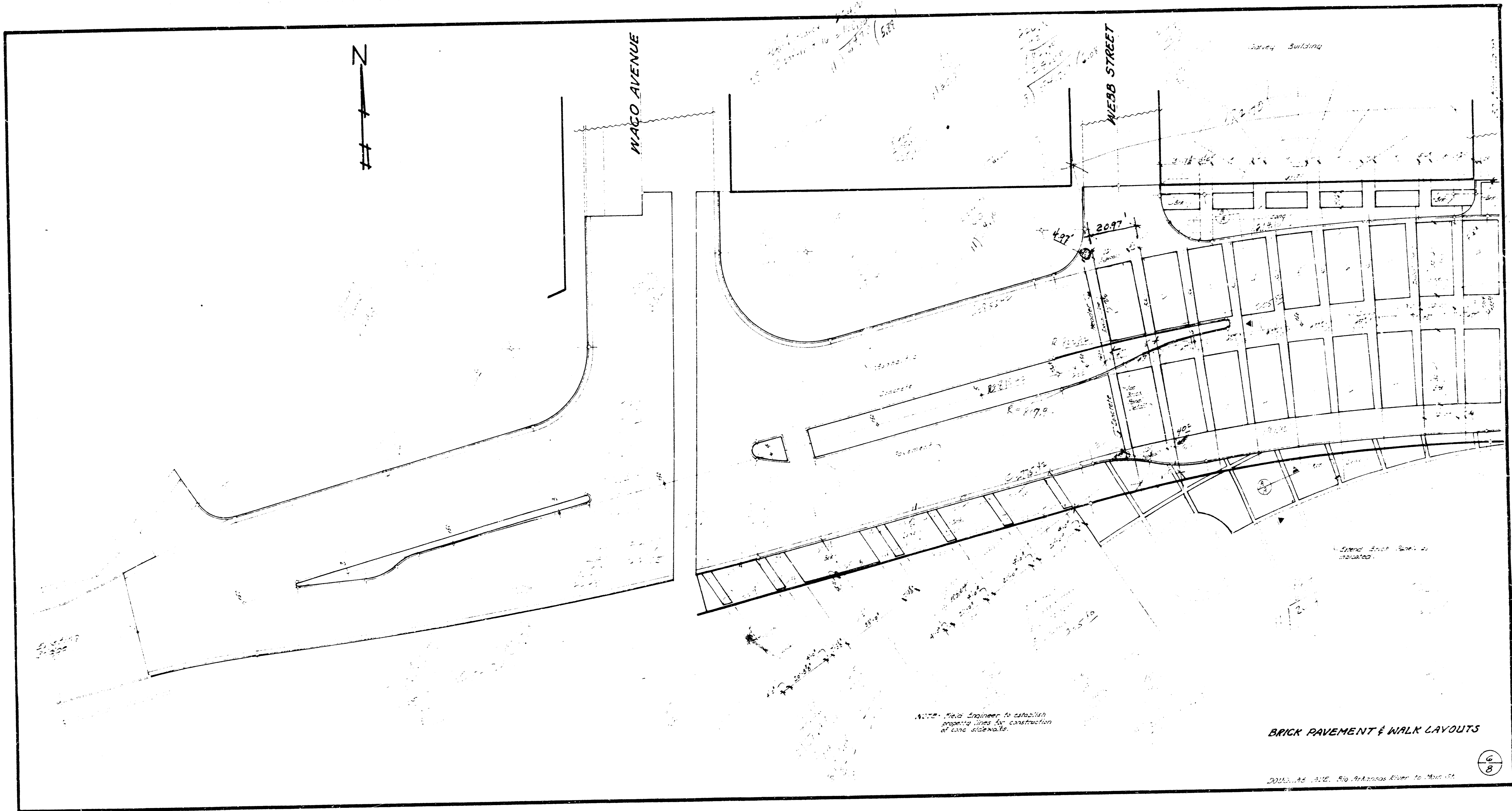


1/8





5
8
DOUGLAS AVENUE
812-1111-1111

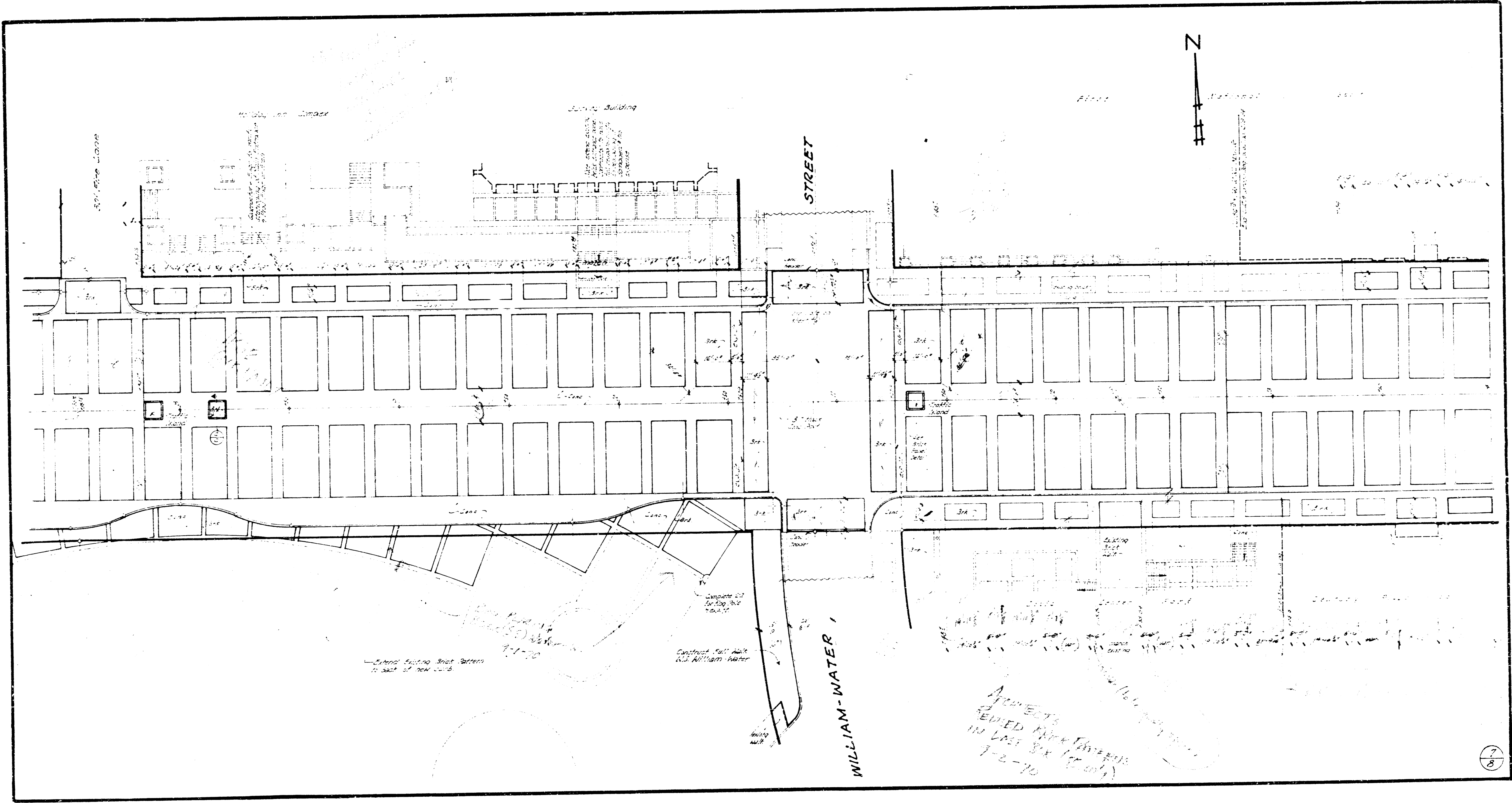


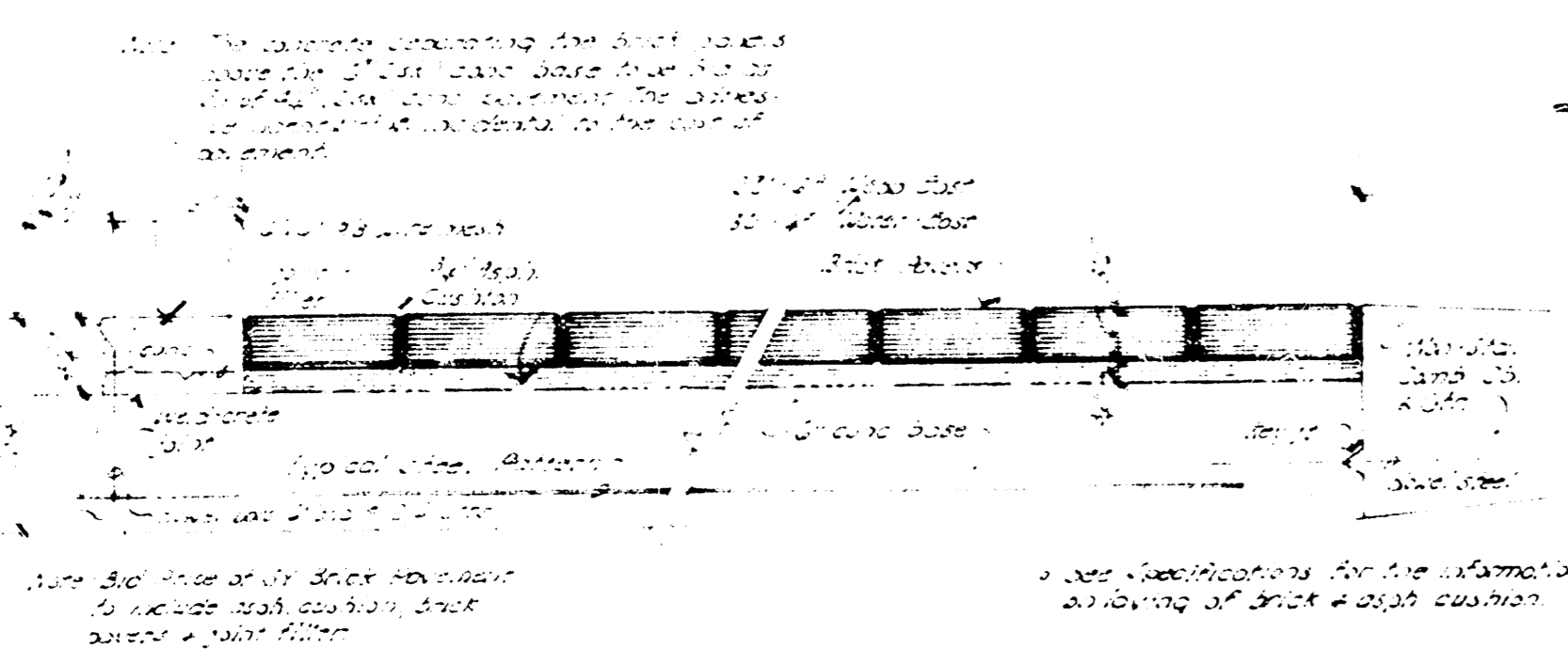
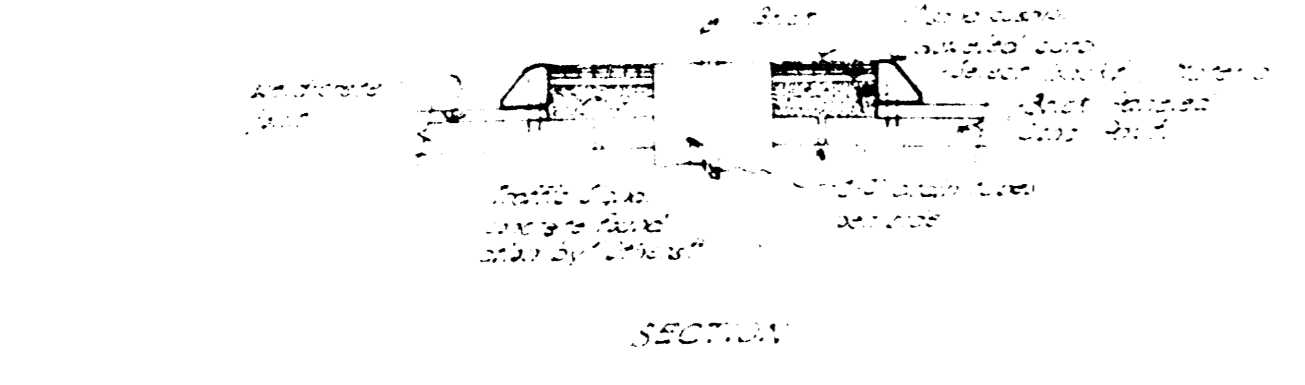
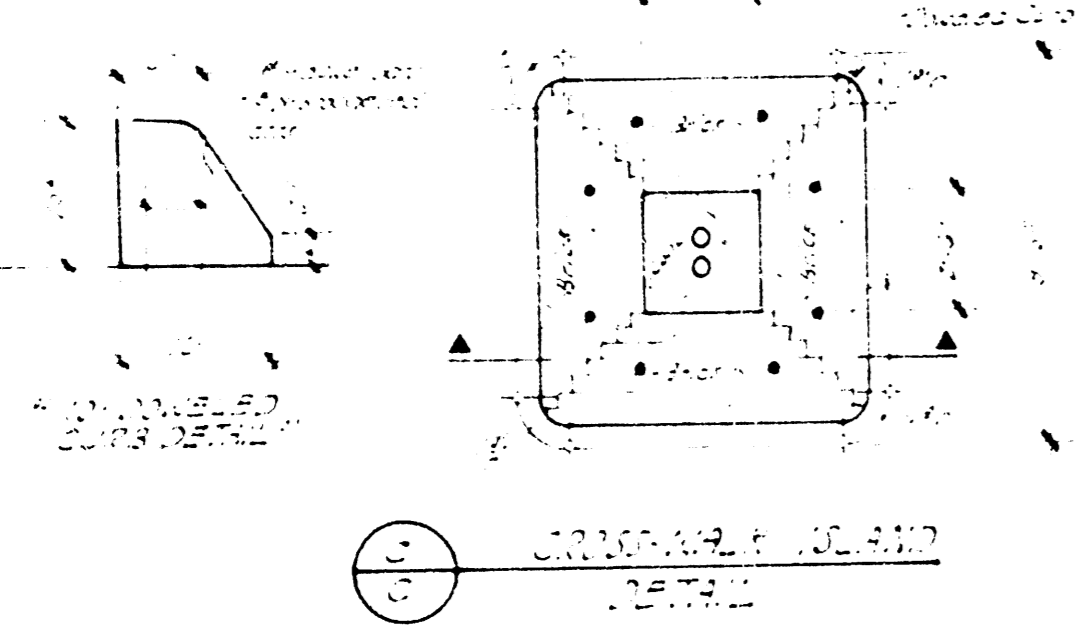
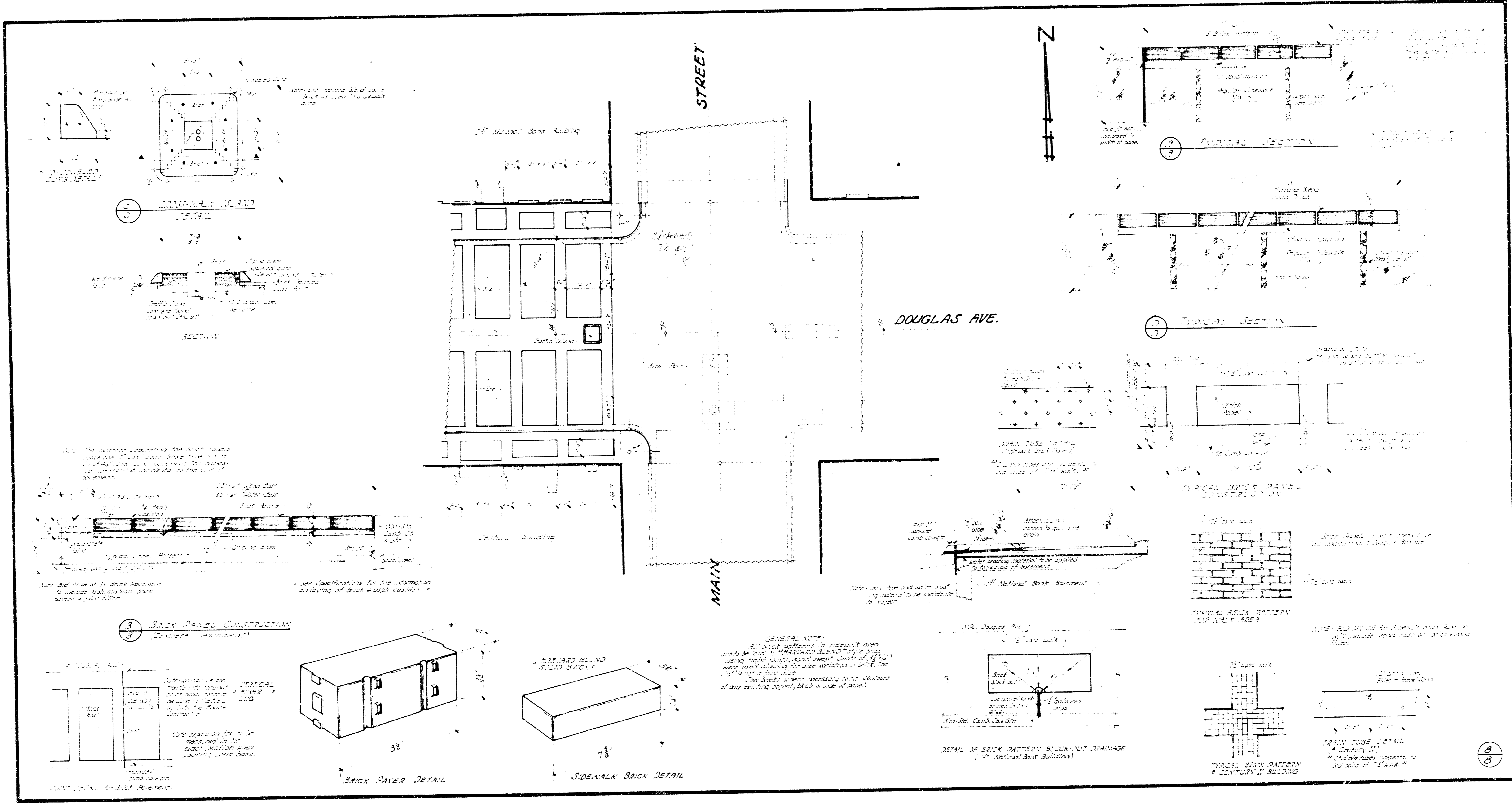
NOTE: Field Engineer to establish property lines by construction of line adjacent.

BRICK PAVEMENT & WALK LAYOUTS

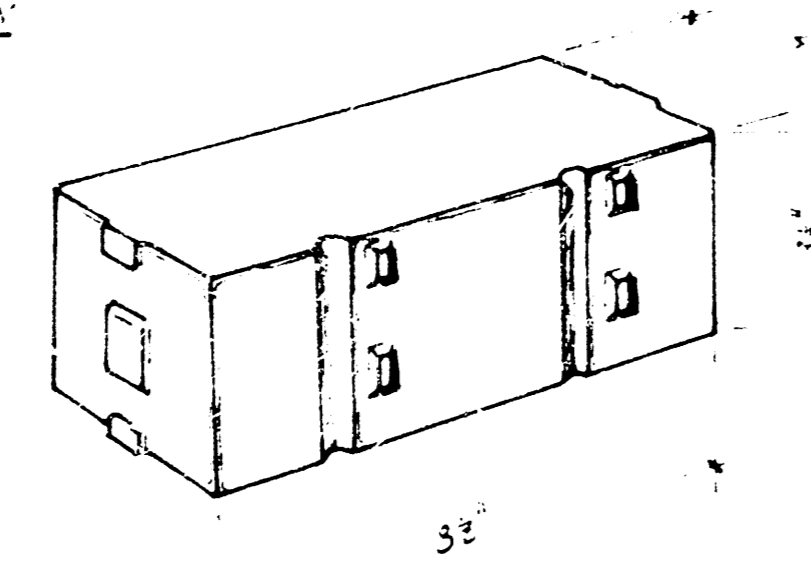
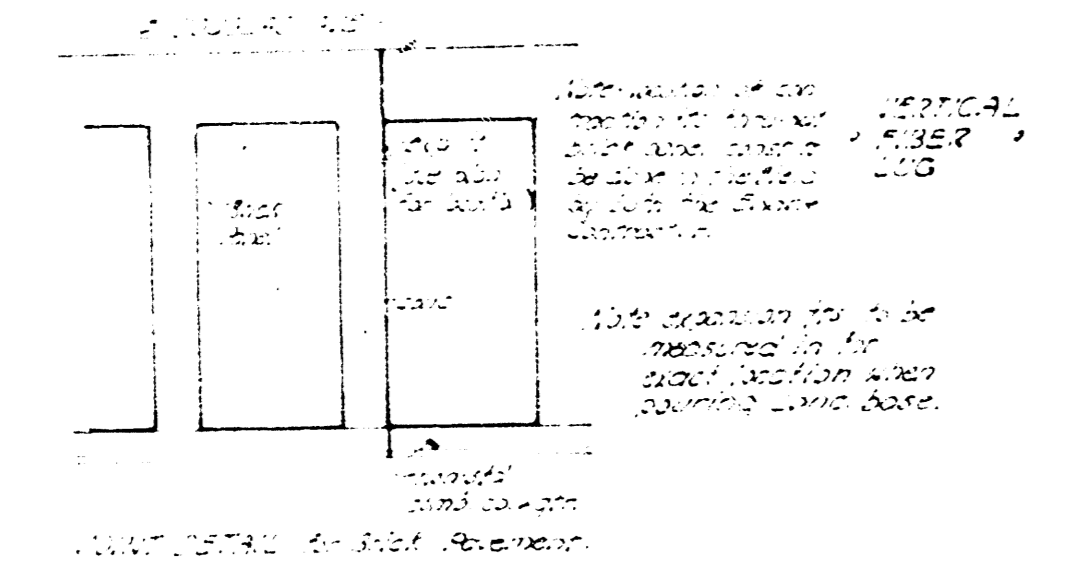
DATE: 11-1-1912. By: [Signature]

6/8

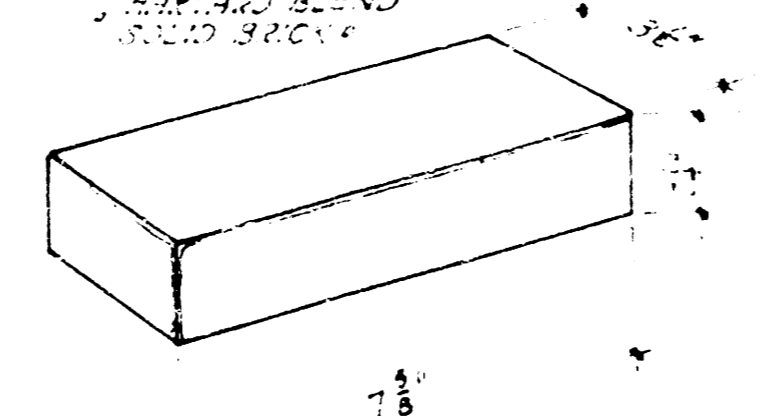




3 BRICK PATTERNS CONSTRUCTION

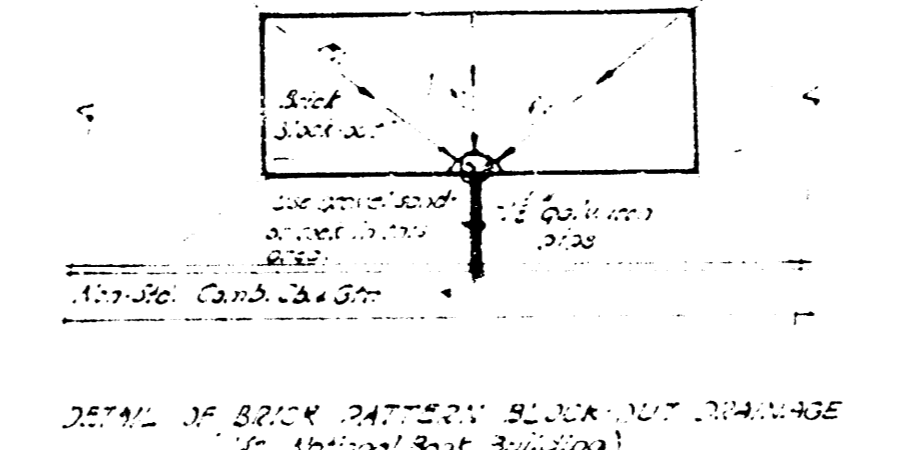
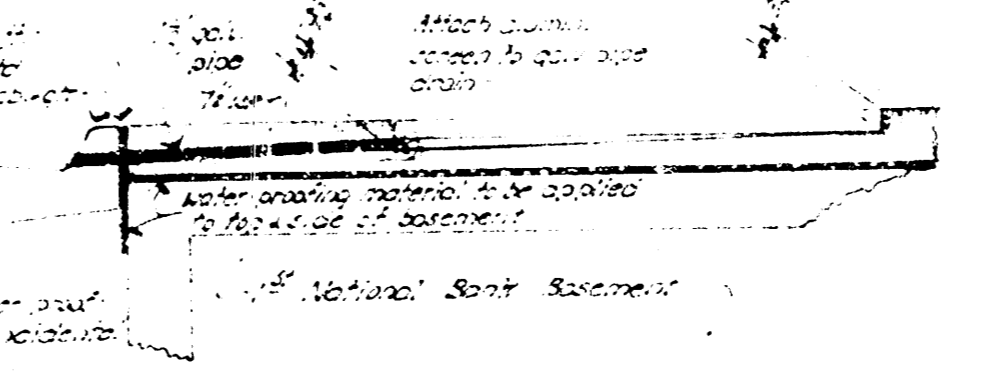


BRICK PATTERN DETAIL

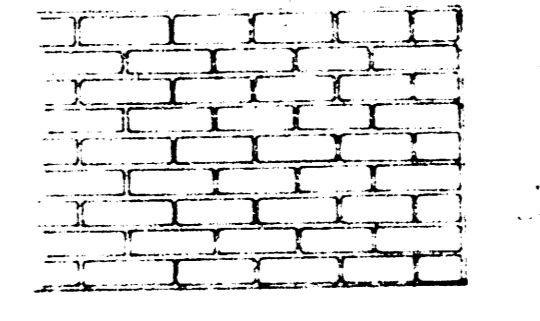


SIDEWALK BRICK DETAIL

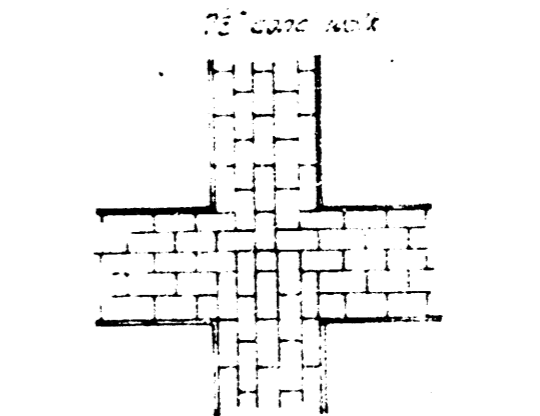
GENERAL NOTE:
 All brick patterns to be used shall be made of brick of uniform size and shape. The brick shall be laid in a mortar of equal parts of cement and brick dust. The brick shall be laid in a mortar of equal parts of cement and brick dust. The brick shall be laid in a mortar of equal parts of cement and brick dust.



DETAIL OF BRICK PATTERN SILL AND SILLIMASE



TYPICAL BRICK PATTERN



TYPICAL BRICK PATTERN

8