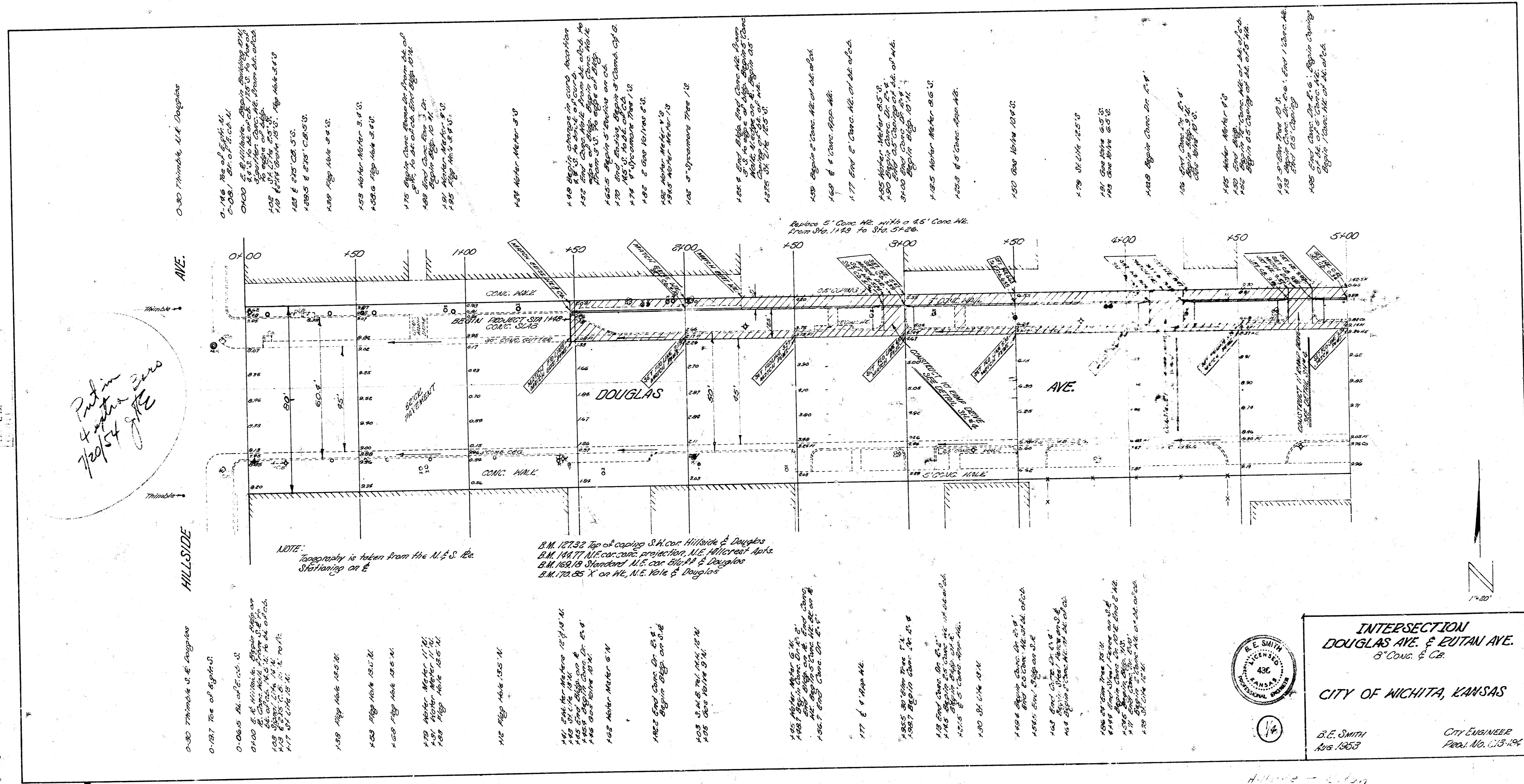


*Part of
7/29/54 file*



0-300 Turntable, N.E. Douglas

AVE.

HILLSIDE

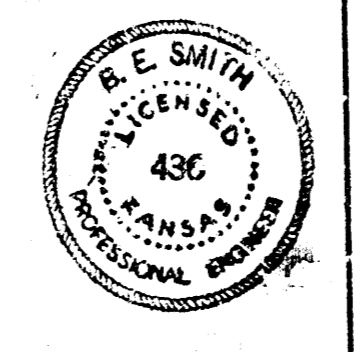
0-300 Turntable, S.E. Douglas

0-196 Re of Sp. N.
0-208 2" x 4" x 8" x 12" x 16" x 20" x 24" x 28" x 32" x 36" x 40" x 44" x 48" x 52" x 56" x 60" x 64" x 68" x 72" x 76" x 80" x 84" x 88" x 92" x 96" x 100" x 104" x 108" x 112" x 116" x 120" x 124" x 128" x 132" x 136" x 140" x 144" x 148" x 152" x 156" x 160" x 164" x 168" x 172" x 176" x 180" x 184" x 188" x 192" x 196" x 200" x 204" x 208" x 212" x 216" x 220" x 224" x 228" x 232" x 236" x 240" x 244" x 248" x 252" x 256" x 260" x 264" x 268" x 272" x 276" x 280" x 284" x 288" x 292" x 296" x 300" x 304" x 308" x 312" x 316" x 320" x 324" x 328" x 332" x 336" x 340" x 344" x 348" x 352" x 356" x 360" x 364" x 368" x 372" x 376" x 380" x 384" x 388" x 392" x 396" x 400" x 404" x 408" x 412" x 416" x 420" x 424" x 428" x 432" x 436" x 440" x 444" x 448" x 452" x 456" x 460" x 464" x 468" x 472" x 476" x 480" x 484" x 488" x 492" x 496" x 500" x 504" x 508" x 512" x 516" x 520" x 524" x 528" x 532" x 536" x 540" x 544" x 548" x 552" x 556" x 560" x 564" x 568" x 572" x 576" x 580" x 584" x 588" x 592" x 596" x 600" x 604" x 608" x 612" x 616" x 620" x 624" x 628" x 632" x 636" x 640" x 644" x 648" x 652" x 656" x 660" x 664" x 668" x 672" x 676" x 680" x 684" x 688" x 692" x 696" x 700" x 704" x 708" x 712" x 716" x 720" x 724" x 728" x 732" x 736" x 740" x 744" x 748" x 752" x 756" x 760" x 764" x 768" x 772" x 776" x 780" x 784" x 788" x 792" x 796" x 800" x 804" x 808" x 812" x 816" x 820" x 824" x 828" x 832" x 836" x 840" x 844" x 848" x 852" x 856" x 860" x 864" x 868" x 872" x 876" x 880" x 884" x 888" x 892" x 896" x 900" x 904" x 908" x 912" x 916" x 920" x 924" x 928" x 932" x 936" x 940" x 944" x 948" x 952" x 956" x 960" x 964" x 968" x 972" x 976" x 980" x 984" x 988" x 992" x 996" x 1000"

NOTE: Elevation is taken from the U.S.S. Re. Stationing on E

B.M. 127.25 Top of caping S.H. cor. Hillside & Douglas
B.M. 127.77 U.S. concrete projection, N.E. Hillcrest Apts.
B.M. 129.16 Standard U.S. cor. Hillside & Douglas
B.M. 172.95 X on W. N.E. Yale & Douglas

0-005 2" x 4" x 8" x 12" x 16" x 20" x 24" x 28" x 32" x 36" x 40" x 44" x 48" x 52" x 56" x 60" x 64" x 68" x 72" x 76" x 80" x 84" x 88" x 92" x 96" x 100" x 104" x 108" x 112" x 116" x 120" x 124" x 128" x 132" x 136" x 140" x 144" x 148" x 152" x 156" x 160" x 164" x 168" x 172" x 176" x 180" x 184" x 188" x 192" x 196" x 200" x 204" x 208" x 212" x 216" x 220" x 224" x 228" x 232" x 236" x 240" x 244" x 248" x 252" x 256" x 260" x 264" x 268" x 272" x 276" x 280" x 284" x 288" x 292" x 296" x 300" x 304" x 308" x 312" x 316" x 320" x 324" x 328" x 332" x 336" x 340" x 344" x 348" x 352" x 356" x 360" x 364" x 368" x 372" x 376" x 380" x 384" x 388" x 392" x 396" x 400" x 404" x 408" x 412" x 416" x 420" x 424" x 428" x 432" x 436" x 440" x 444" x 448" x 452" x 456" x 460" x 464" x 468" x 472" x 476" x 480" x 484" x 488" x 492" x 496" x 500" x 504" x 508" x 512" x 516" x 520" x 524" x 528" x 532" x 536" x 540" x 544" x 548" x 552" x 556" x 560" x 564" x 568" x 572" x 576" x 580" x 584" x 588" x 592" x 596" x 600" x 604" x 608" x 612" x 616" x 620" x 624" x 628" x 632" x 636" x 640" x 644" x 648" x 652" x 656" x 660" x 664" x 668" x 672" x 676" x 680" x 684" x 688" x 692" x 696" x 700" x 704" x 708" x 712" x 716" x 720" x 724" x 728" x 732" x 736" x 740" x 744" x 748" x 752" x 756" x 760" x 764" x 768" x 772" x 776" x 780" x 784" x 788" x 792" x 796" x 800" x 804" x 808" x 812" x 816" x 820" x 824" x 828" x 832" x 836" x 840" x 844" x 848" x 852" x 856" x 860" x 864" x 868" x 872" x 876" x 880" x 884" x 888" x 892" x 896" x 900" x 904" x 908" x 912" x 916" x 920" x 924" x 928" x 932" x 936" x 940" x 944" x 948" x 952" x 956" x 960" x 964" x 968" x 972" x 976" x 980" x 984" x 988" x 992" x 996" x 1000"

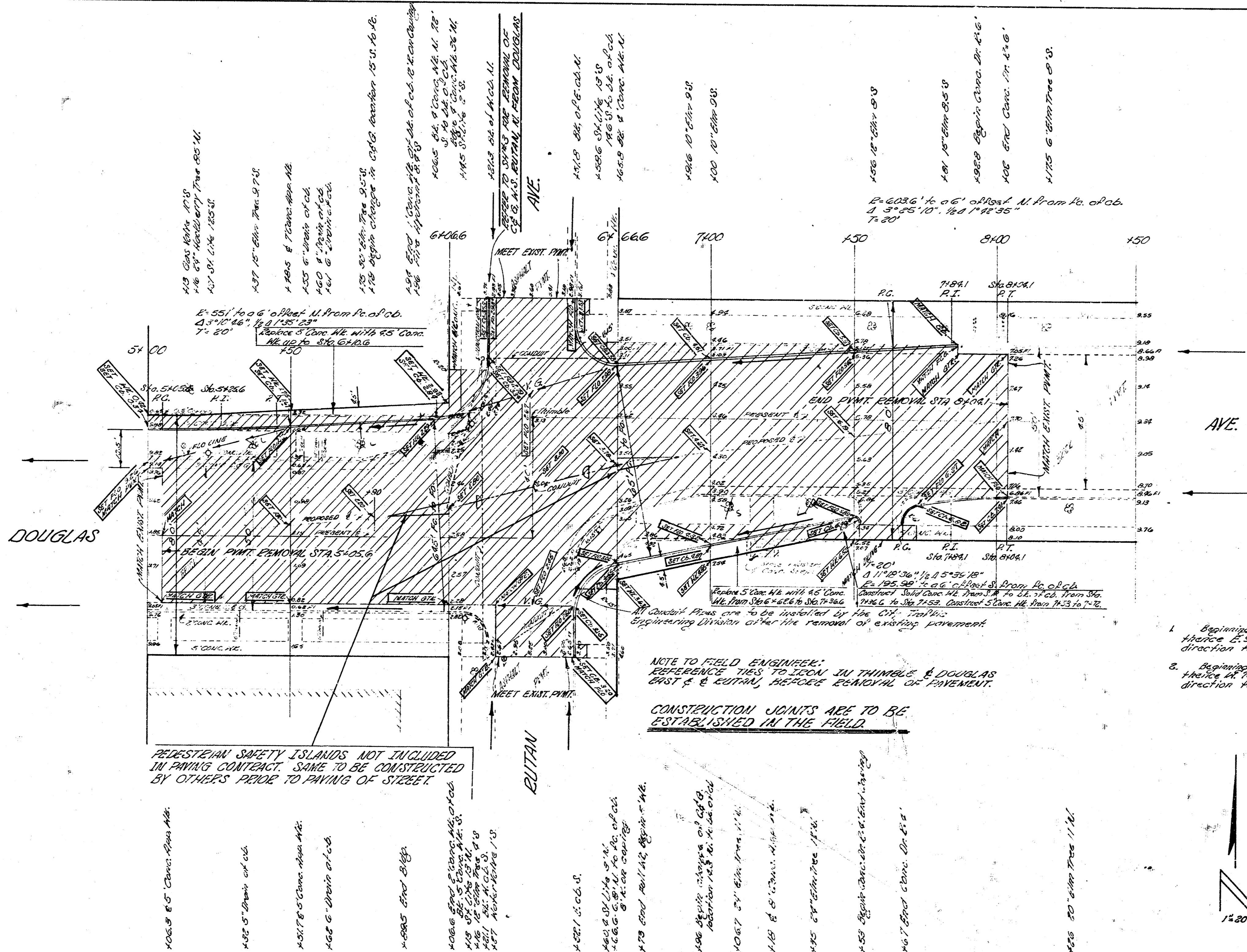


**INTERSECTION
DOUGLAS AVE. & EUTAN AVE.
6" CONC. & CB.**

CITY OF NICHITA, KANSAS

B.E. SMITH
Aug. 1953

CITY ENGINEER
Plan No. 113-194



DOUGLAS

AVE.

EUTAN

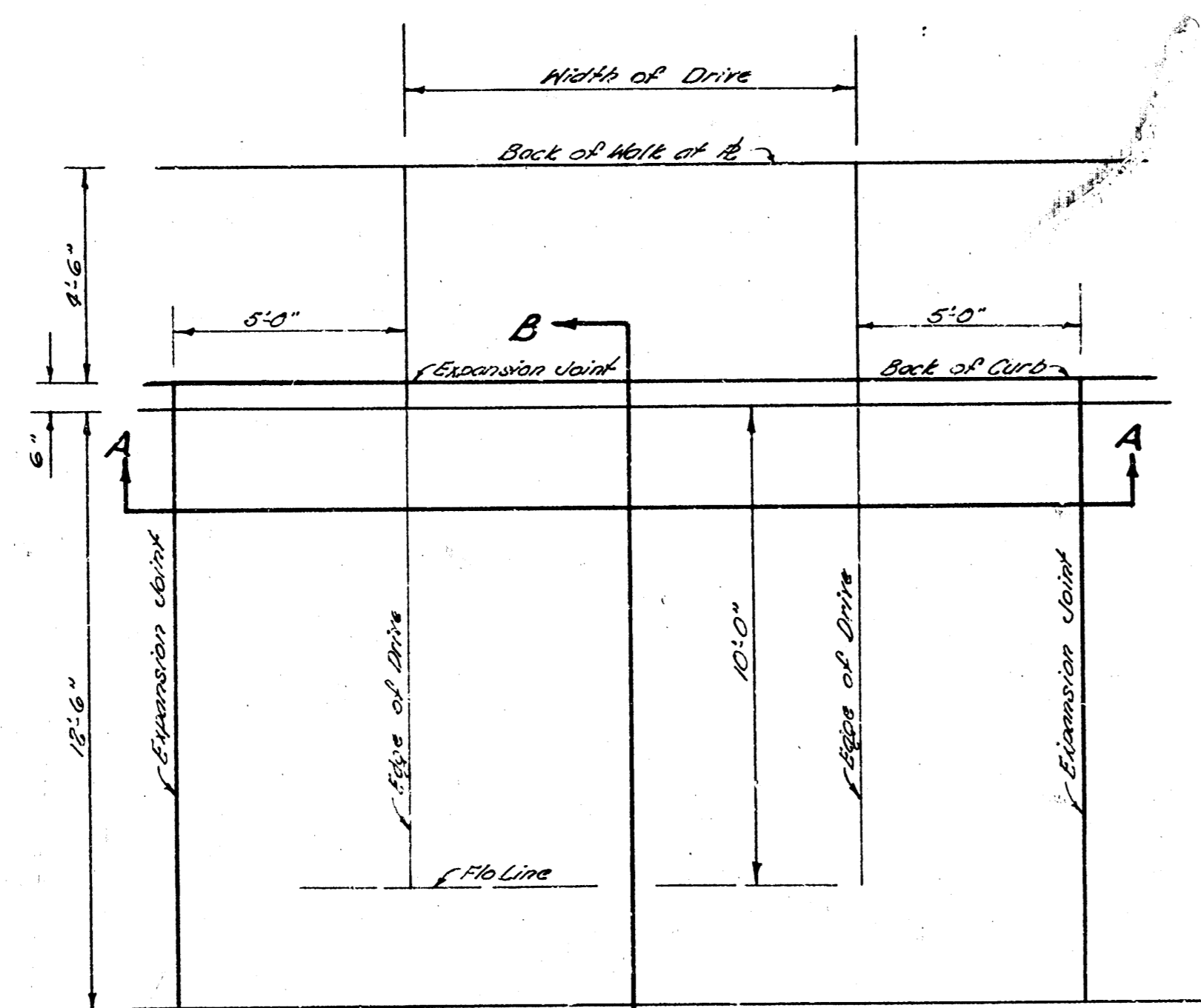
EXISTING SAFETY ISLANDS NOT INCLUDED IN PAVING CONTRACT. SAME TO BE CONSTRUCTED BY OTHERS PRIOR TO PAVING OF STREET.

NOTE TO FIELD ENGINEERS: REFERENCE THIS TO ICON IN THIMBLE & DOUGLAS EAST & EUTAN, BEFORE REMOVAL OF PAVEMENT. CONSTRUCTION JOINTS ARE TO BE ESTABLISHED IN THE FIELD.

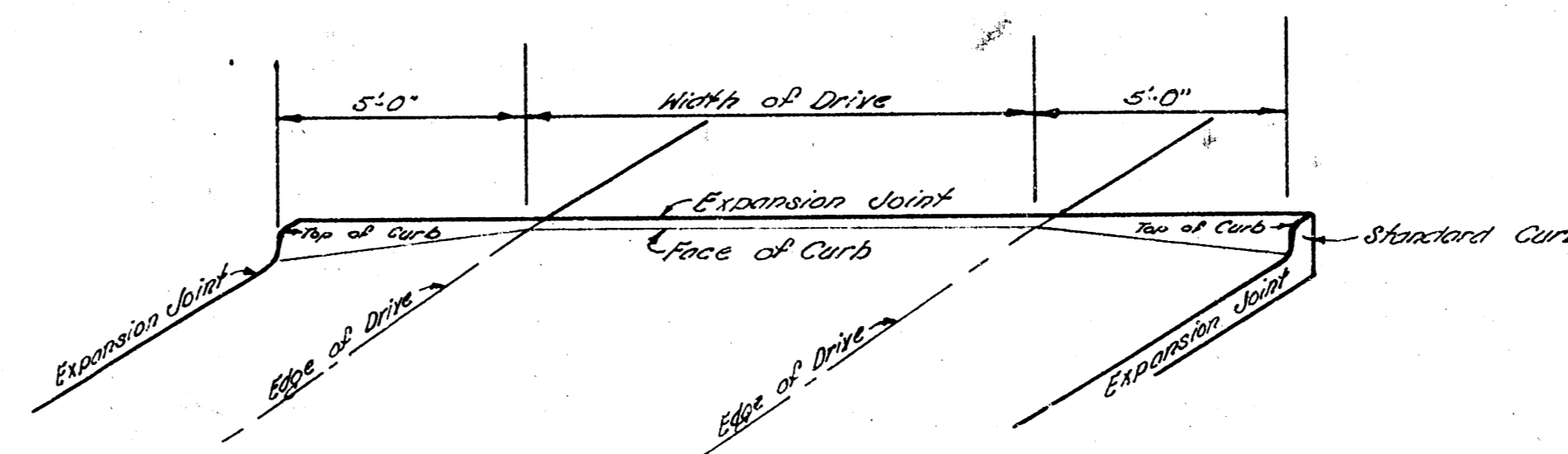
- DEDICATIONS
1. Beginning of a point 30' N. of the N.E. cor. Douglas & Eutan, thence E. 90', thence N. 15', thence in a Southwesterly direction to the point of beginning.
 2. Beginning of a point 30' S. of the S.E. cor. Douglas & Eutan, thence N. 75', thence in a Northwesterly direction to the point of beginning.

INTERSECTION DOUGLAS AVE. & EUTAN AVE.

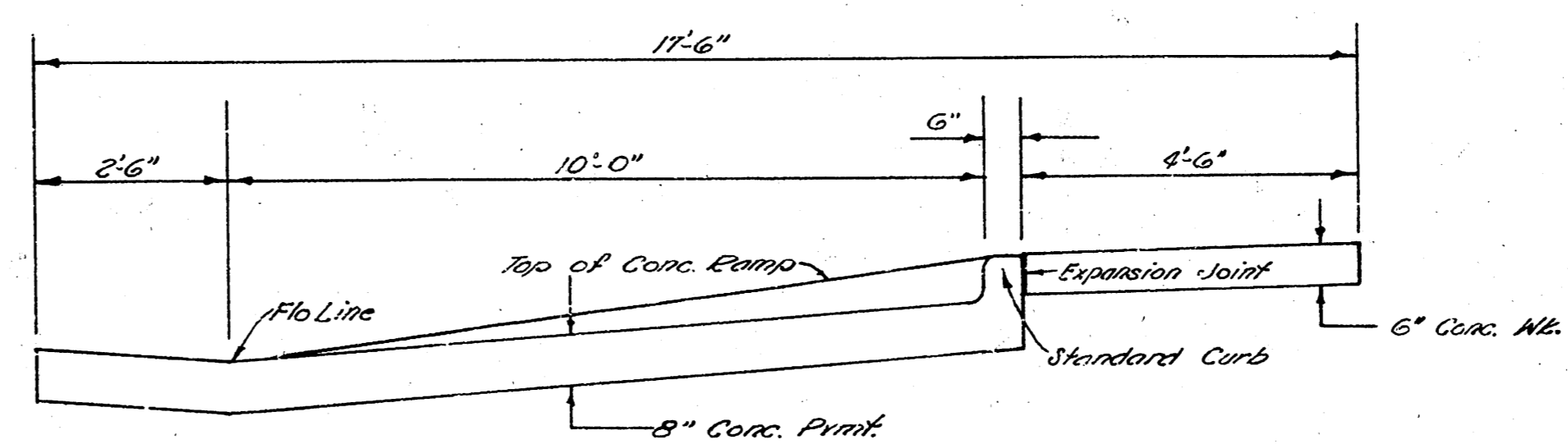
14



RAMP DRIVE DETAIL
Not To Scale



SECTION A-A
Not To Scale



SECTION B-B
Not To Scale

INTERSECTION
DOUGLAS AVE & RUTAN AVE.

1/4

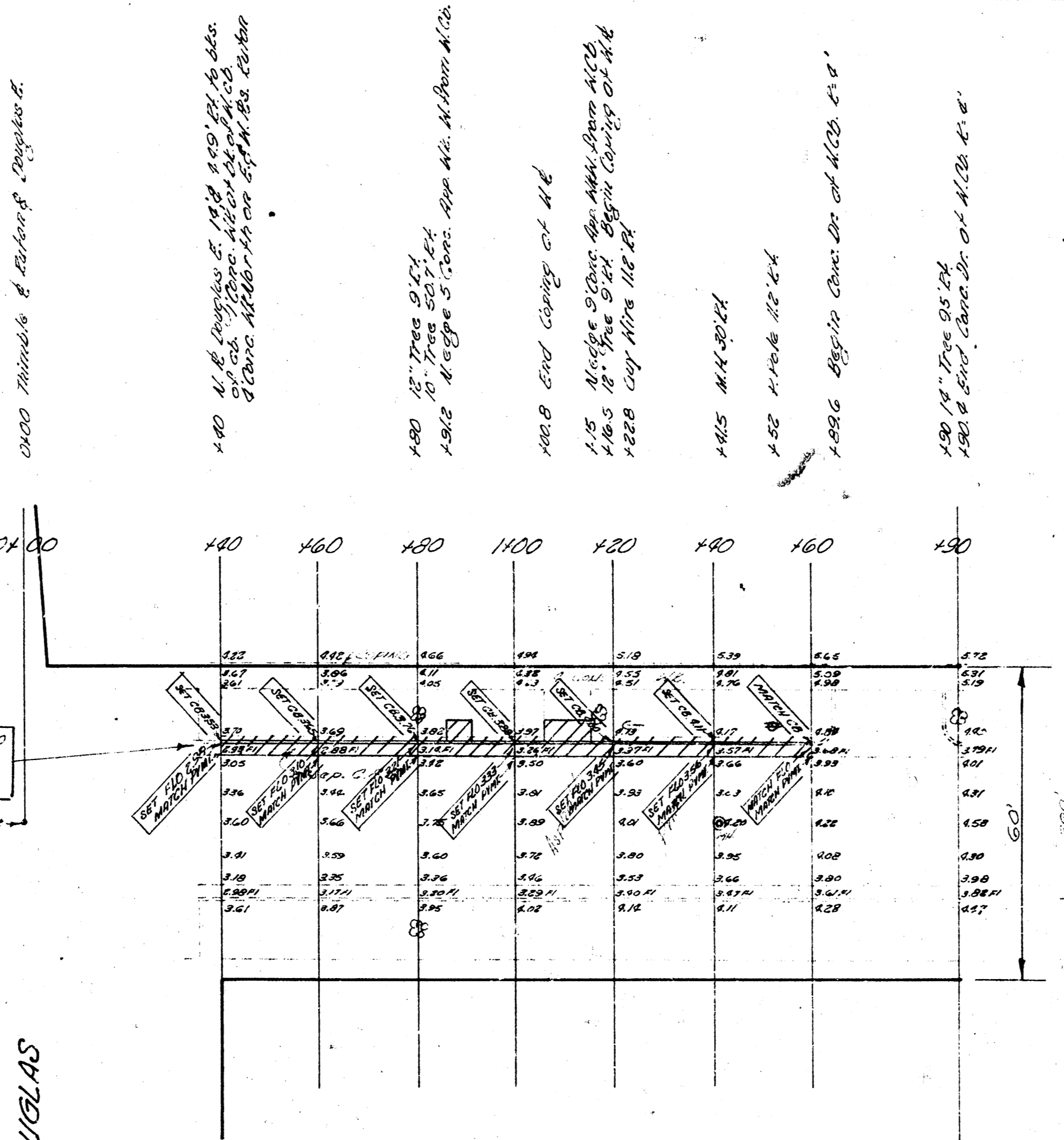
Stationing on A.B.

Remove 120' of 36" concrete curb & gutter from Sta. 0+00 to Sta. 1+00. Replace with 120' of Standard 30" Combined curb & gutter. 6" to 10" of base formed with 8" Asphalt Concrete. See Detail.

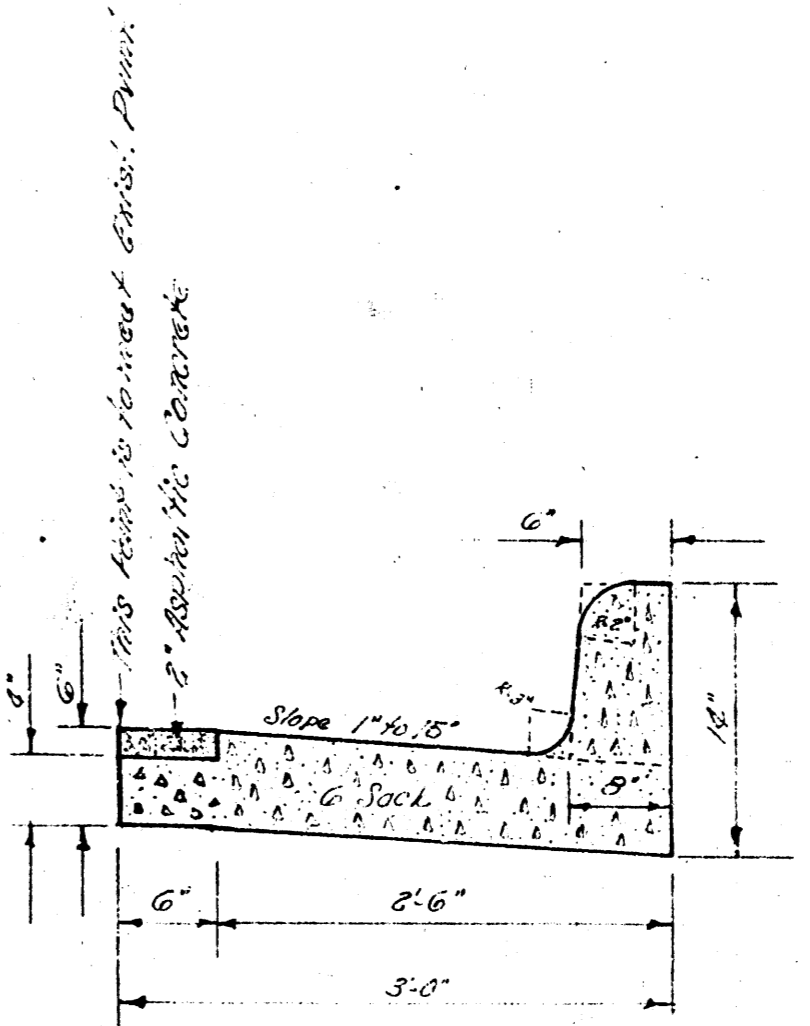
BUTAN

AVE.

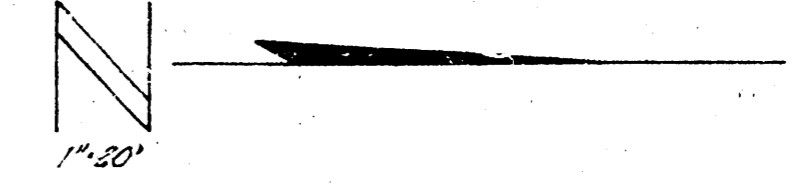
DOUGLAS



AVE.

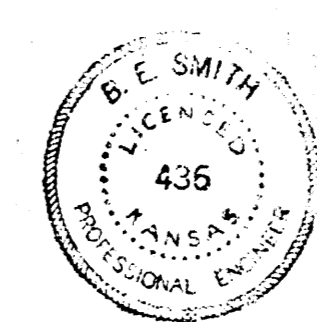
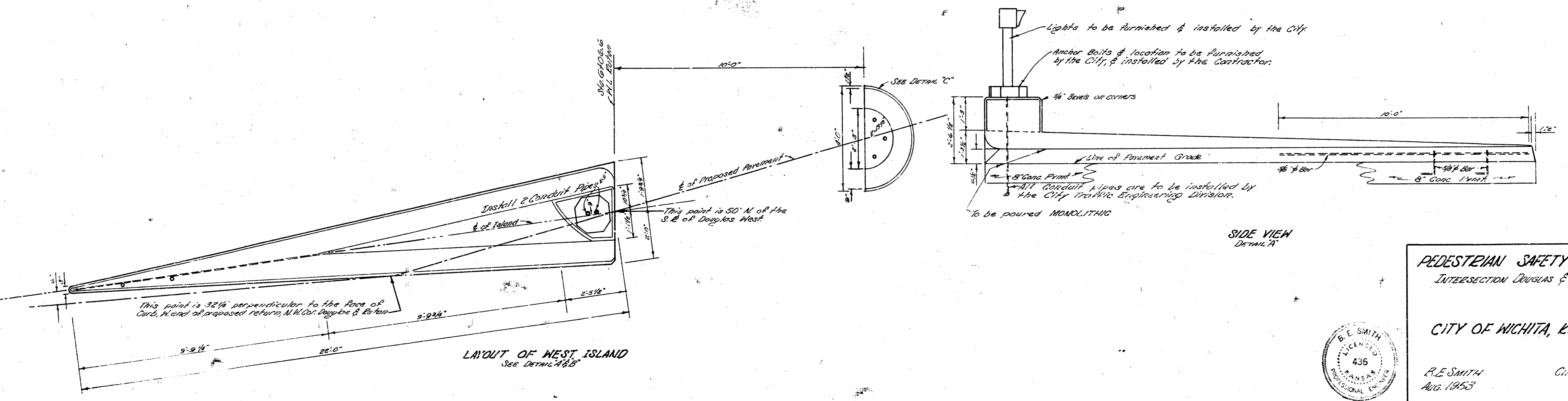
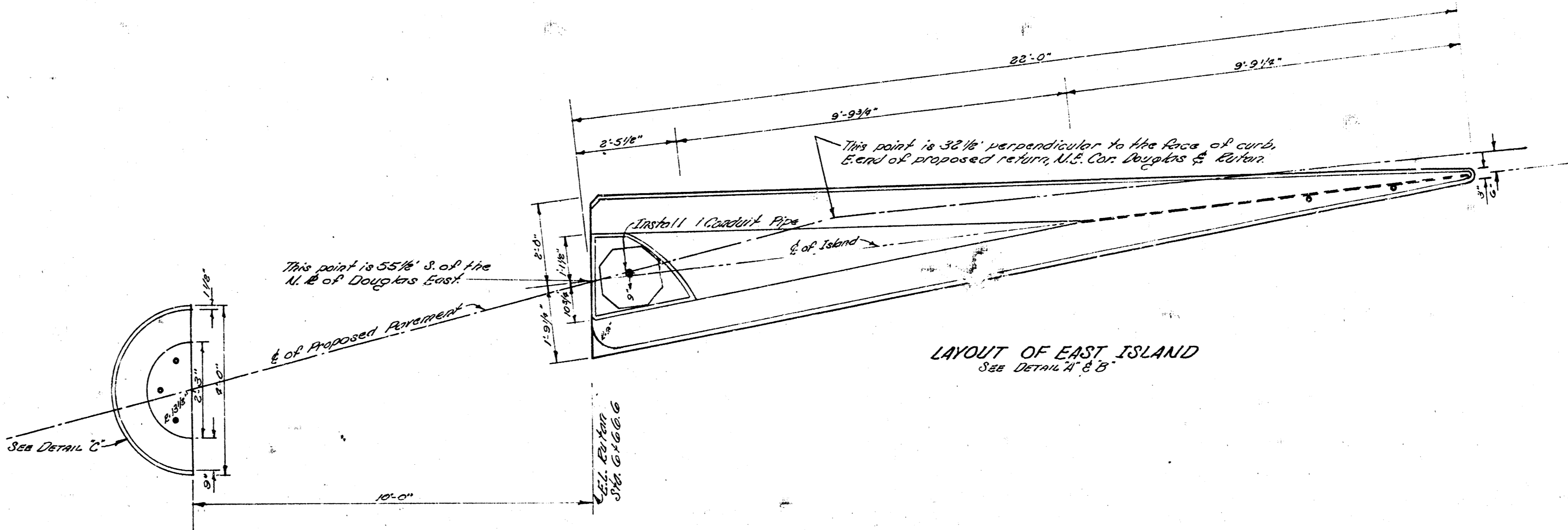
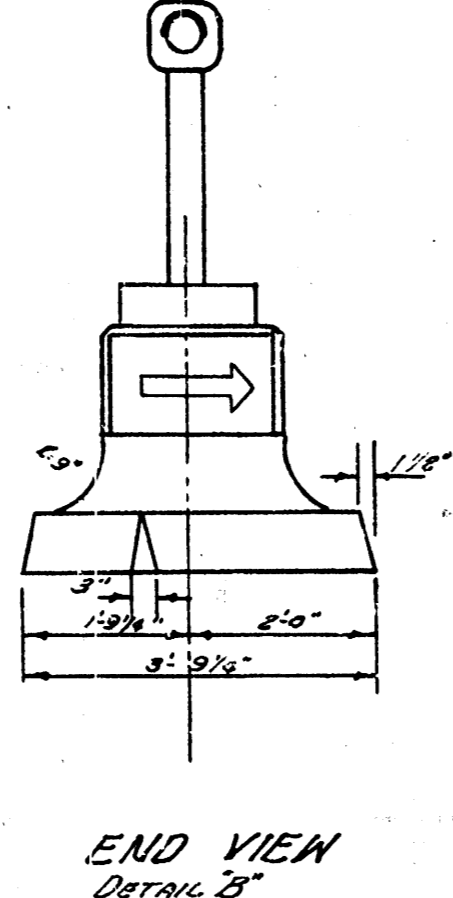
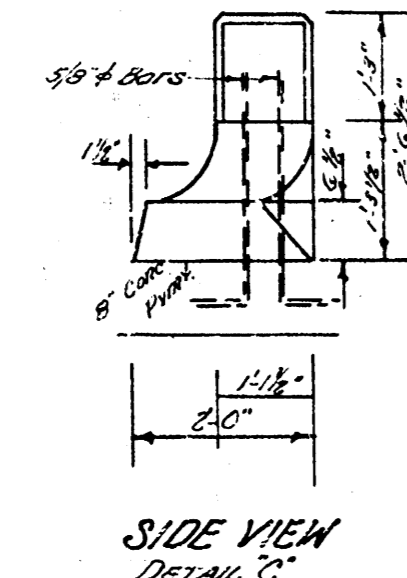


DETAIL FOR COMBINED CURB & GUTTER FROM STA. 0+00 TO STA. 1+00 1/8\"/>



INTERSECTION DOUGLAS AVE. & BUTAN AVE.

3/4



PEDESTRIAN SAFETY ISLANDS
INTERSECTION DODD & BIRDAV

CITY OF WICHITA, KANSAS

R. E. SMITH
AUG. 1953
CITY ENGINEER