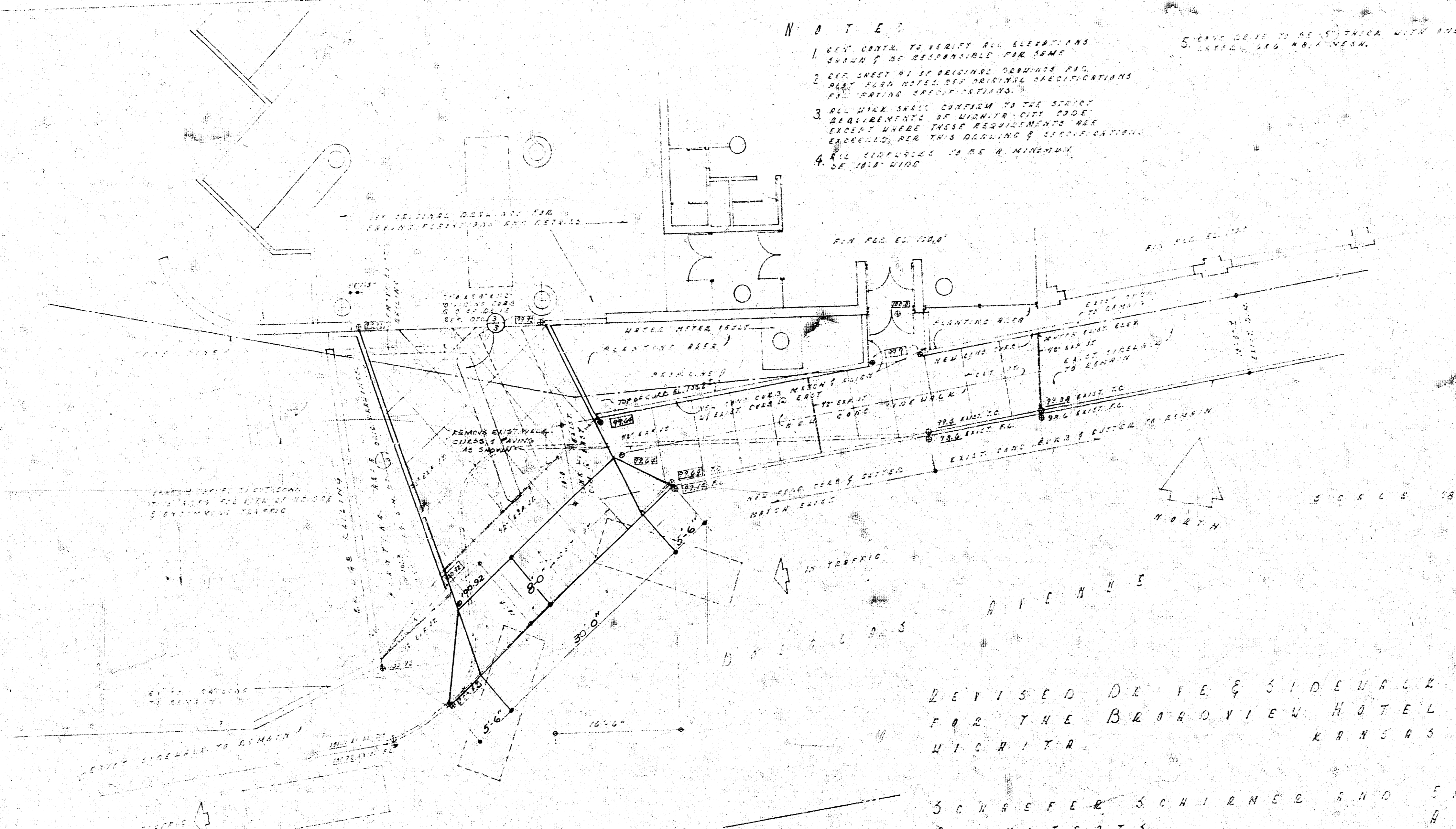


**NOTES**

1. CHECK COSTS TO VERIFY ALL ALTERNATES KNOWN TO BE RESPONSIBLE FOR SAME.
2. CHECK SHEET #1 TO DETERMINE DRAINAGE FOR ALL PLANS AND TO VERIFY ALL SPECIFICATIONS FOR DRAINAGE SPECIFICATIONS.
3. ALL WORK SHALL CONFORM TO THE SPECIFIC REQUIREMENTS OF WICHITA CITY CODE WHICH HAVE BEEN THESE REQUIREMENTS ARE EXCEEDED, PER THIS DRAWING & SPECIFICATIONS.
4. ALL SIDEWALKS TO BE A MINIMUM OF 18" WIDE.
5. CHECK DEPTH OF ALL UTILITY LINES AND LOCATIONS AND MARK THEM.



REVISED DRIVE & SIDEWALK LAYOUT  
FOR THE BROADVIEW HOTEL  
WICHITA KANSAS JAN 4 1924

SCHAEFER, SCHIRMER AND SPAIN  
ARCHITECTS  
WICHITA KANSAS  
P. O. BOX 3 - 4 1901

APPROVED AS NOTED  
By CITY ENGINEER WICHITA

Sanitary Sewers \_\_\_\_\_  
Storm Sewers \_\_\_\_\_  
Driveway Approaches \_\_\_\_\_