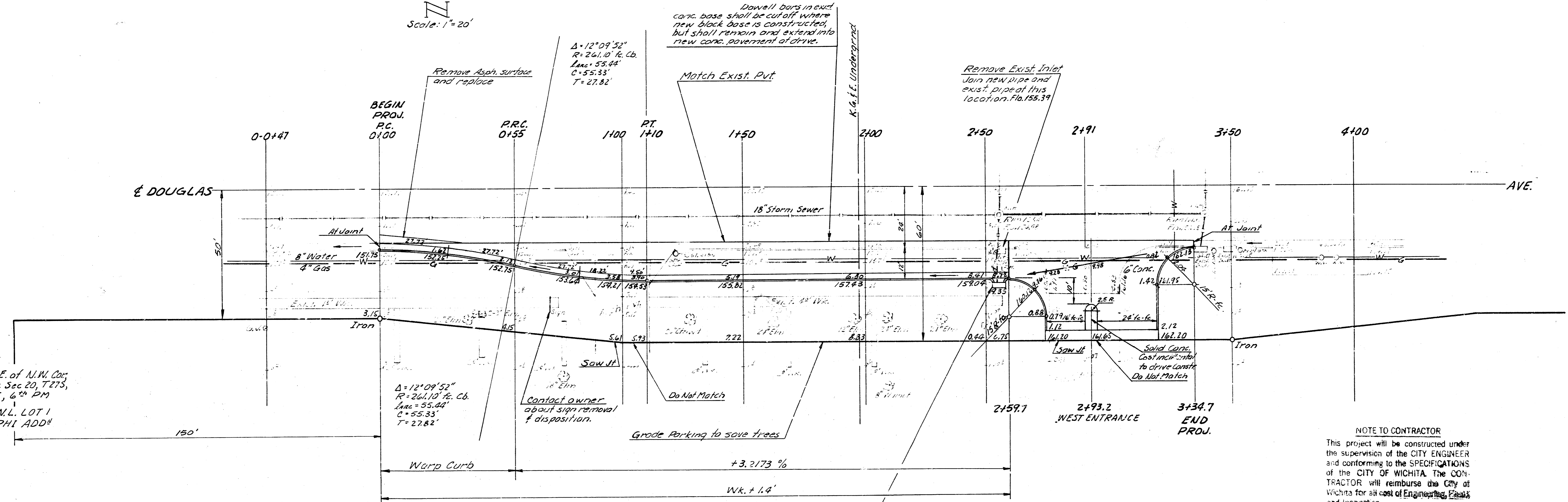
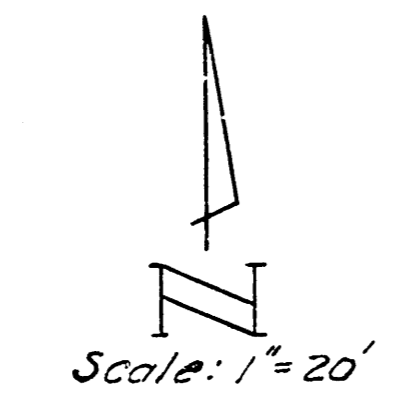


B.M. 154.276 Linden Dr. & Douglas, City Stk., Top of E. End, N. Handrail of R.C.B. just W. of Linden Dr. on Douglas  
 B.M. 172.29 "a" Cut on Curb, 6' E. of E. End of Driveway for Bldg. 9175 E. Douglas  
 B.M. 172.38 R.R. Spike S. Side of Power-Pole 758' W. & 79' U. of N.E. Cor. of Lot 1, PHI Add<sup>n</sup>.



393' E. of N.W. Cor. S.E. 1/4 Sec 20, T27S, R2E, 6<sup>th</sup> PM  
 W.L. LOT 1, PHI ADD<sup>n</sup>

$\Delta = 12^{\circ}09'52''$   
 $R = 261.10$  ft. Cb.  
 $Lanc = 55.44'$   
 $C = 55.33'$   
 $T = 27.82'$

Dowel bars in exst. conc. base shall be cut off where new black base is constructed, but shall remain and extend into new conc. pavement at drive.

Remove Exist. Inlet Join new pipe and exst. pipe at this location. Fla. 155.39

Remove Asph. surface and replace

Match Exist. Put

BEGIN PROJ. P.C. 0+47

P.R.C. 0+55

1+00

P.T. 1+10

1+50

2+00

2+50

2+91

3+50

4+00

E DOUGLAS

AVE.

50'

Al Joint

8" Water

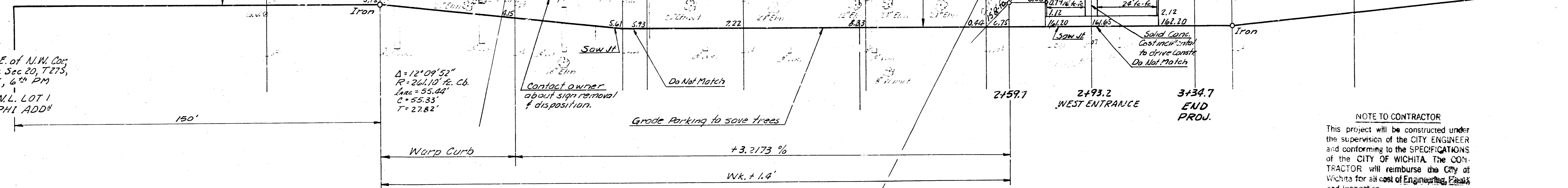
8" Gas

18" Storm Sewer

Al Joint

6" Conc.

Al Joint



(\* NOTE TO CONTRACTOR - Saw & Rem. (6") of x810 Asph. surface of 1st 15' of base has been laid down. The Saw Jt. to be incidental to PROJ.

WIDENING DETAIL  
 NO SCALE

THIS CONTRACTOR SHALL BE RESPONSIBLE FOR THE PROTECTION OF ALL UTILITIES AND STRUCTURES TO REMAIN. THE CONTRACTOR SHALL BE RESPONSIBLE FOR THE PROTECTION OF ALL UTILITIES AND STRUCTURES TO REMAIN. THE CONTRACTOR SHALL BE RESPONSIBLE FOR THE PROTECTION OF ALL UTILITIES AND STRUCTURES TO REMAIN.

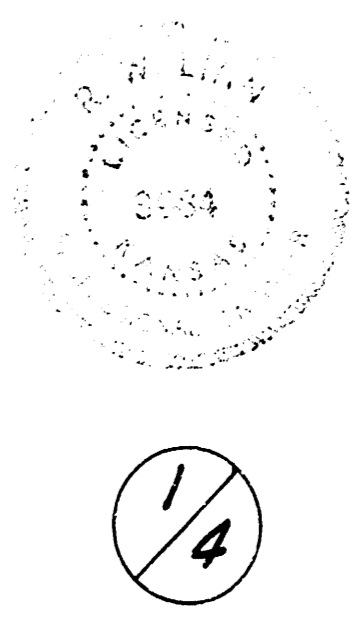
Cast in Type 1A Curb Inlet Install 15" L.E. 15" pipe between New Inlet and exst. 15" pipe Fla. Div. 155.65 CAUTION - SHALLOW PIPE

EARTHWORK TOTAL  
 Excavation 474.1 CY  
 +10% 47.4  
 521.5 CY

Total Manipulation 916<sup>2</sup> S.Y.

NOTE TO CONTRACTOR  
 This project will be constructed under the supervision of the CITY ENGINEER and conforming to the SPECIFICATIONS of the CITY OF WICHITA. The CONTRACTOR will reimburse the City of Wichita for all cost of Engineering, Plans and Inspection.

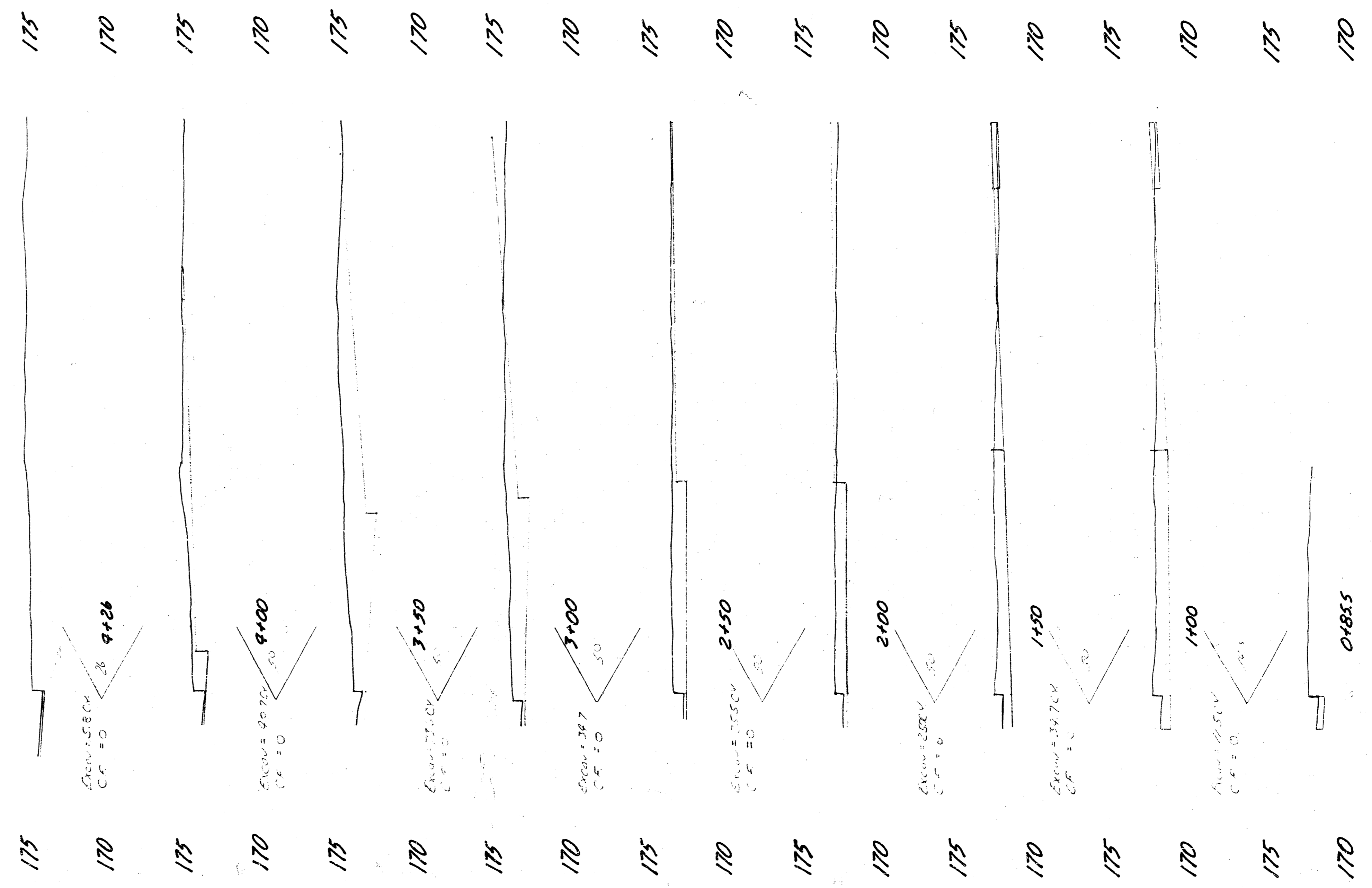
CITY OF WICHITA  
 APPROVED: [Signature]  
 Date 6-15-77  
 Engineering Div. [Signature]



DECELERATION LANES  
 S.D. SIDE DOUGLAS AVE.  
 150' E. OF W.L. LOT 1, PHI ADD<sup>n</sup>  
 TO 500' E. OF W.L. LOT 1, PHI ADD<sup>n</sup>  
 & 855' W. OF E.L. LOT 1, PHI ADD<sup>n</sup>  
 TO 514.5' W. OF E.L. LOT 1, PHI ADD<sup>n</sup>  
 9" ASPH. WITH COMB. CB. & GTR.  
 CITY OF WICHITA, KANSAS  
 R.W. LINN CITY ENGINEER  
 DATE PROJ. NO. DAKS 576 004

DRAWN: L.E.P. 5-1-77  
 CHECKED: D.A.C.-S.G.S.  
 DATE: 5-1-77

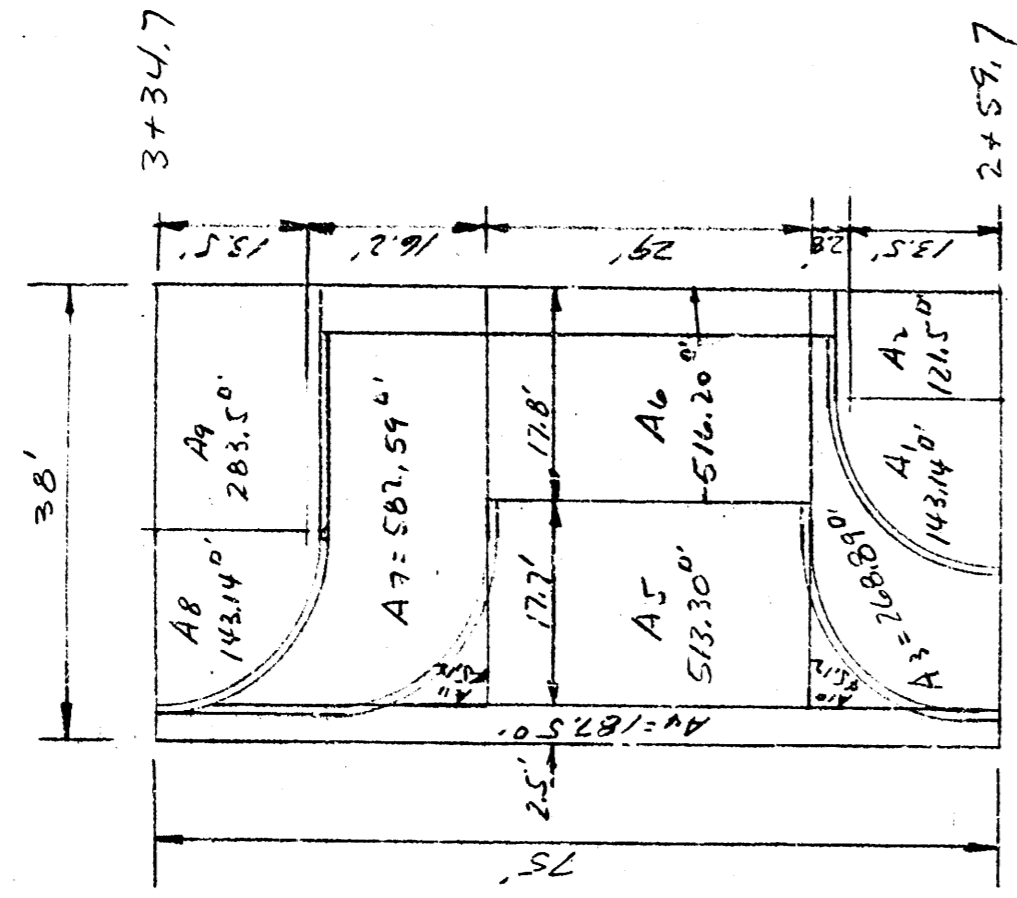




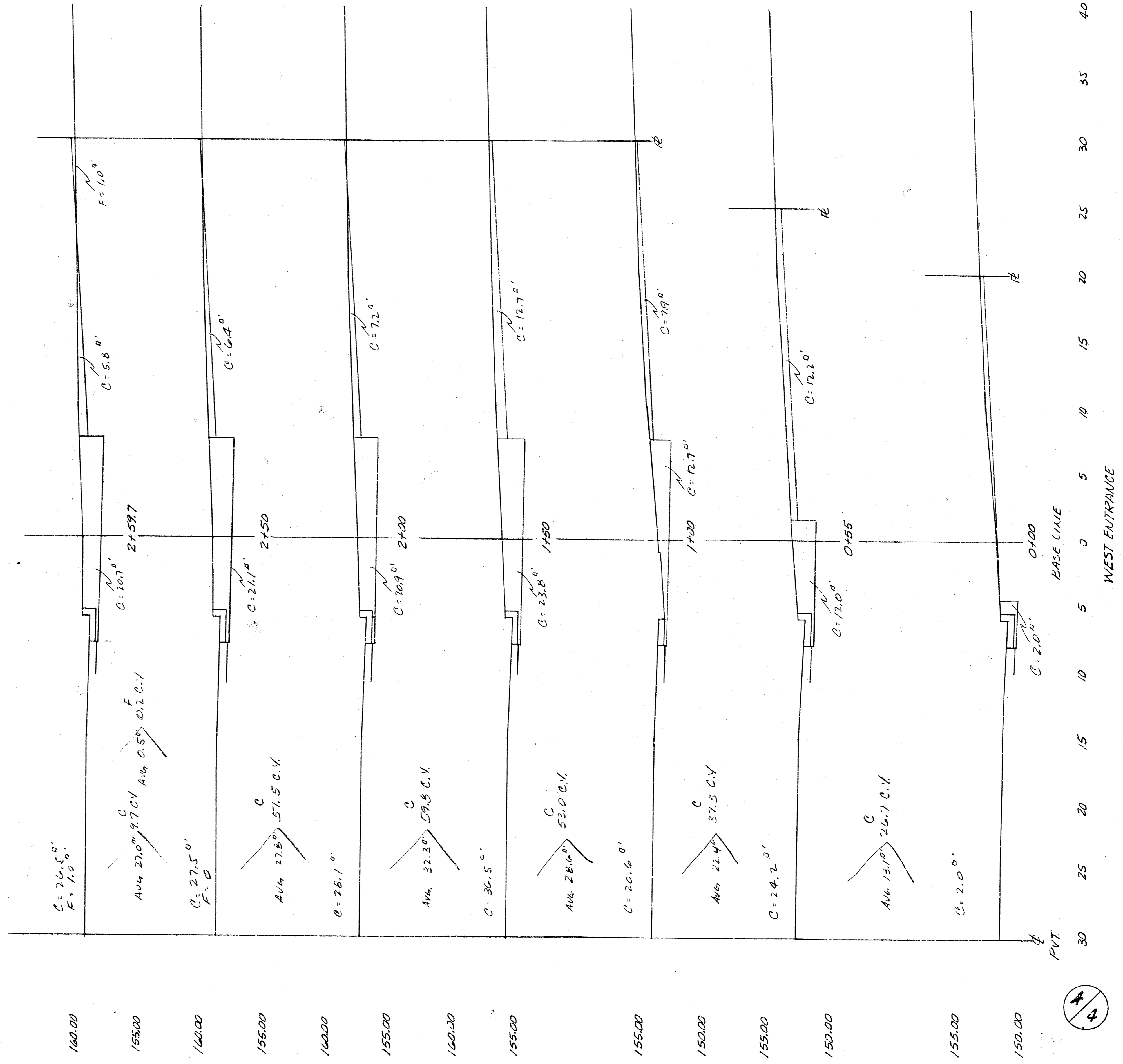
10 5 0 5 10 15 20 25 30 35

Excavation = 8515 CY  
 Total = 25.6  
 Total = 2277 CY

East Entrance



Vol. A<sub>1</sub> =  $(0.63 - 0.37) \left( \frac{14.18 \times 12.5}{2} \right) = 2.8 \text{ C.Y. F}$   
 Vol. A<sub>2</sub> =  $(0.16 - 0.37) \left( \frac{5.25 \times 12.5}{2} \right) = 0.5 \text{ C.Y. C}$   
 Vol. A<sub>3</sub> = 0-C, 0-F  
 Vol. A<sub>4</sub> =  $(8.82 - 8.82) \times \frac{12.5 \times 12.5}{2} = 0.3 \text{ C.Y. C}$   
 Vol. A<sub>5</sub> = 0-C, 0-F  
 Vol. A<sub>6</sub> =  $(0.65 - 0.37) \left( \frac{5.25 \times 12.5}{2} \right) = 0.3 \text{ C.Y. F}$   
 Vol. A<sub>7</sub> =  $(1.44 - 1.28) \left( \frac{5.25 \times 12.5}{2} \right) = 3.5 \text{ C.Y. F}$   
 Vol. A<sub>8</sub> = 0-C, 0-F  
 Vol. A<sub>8</sub> =  $(2.31 - 2.13) \left( \frac{14.18 \times 12.5}{2} \right) = 2.8 \text{ C.Y. F}$   
 C<sub>TOT</sub> = 8.8 C.Y.  
 F<sub>TOT</sub> = 12.3 C.Y.



EARTHWORK - THIS SHEET	
EXCAV	FILL
246.8 C.Y.	11.5 C.Y.
TOTAL EARTHWORK - E SHEETS	
EXCAV	FILL
444.3 C.Y.	58.7 C.Y.

DECELERATION LANES  
 SO. SIDE DOUGLAS AVE.  
 PHI ADD.  
 PROJ. NO. DAKS 576004

