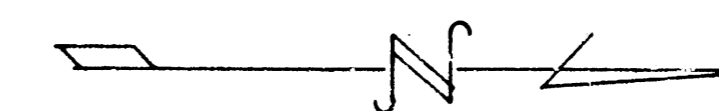


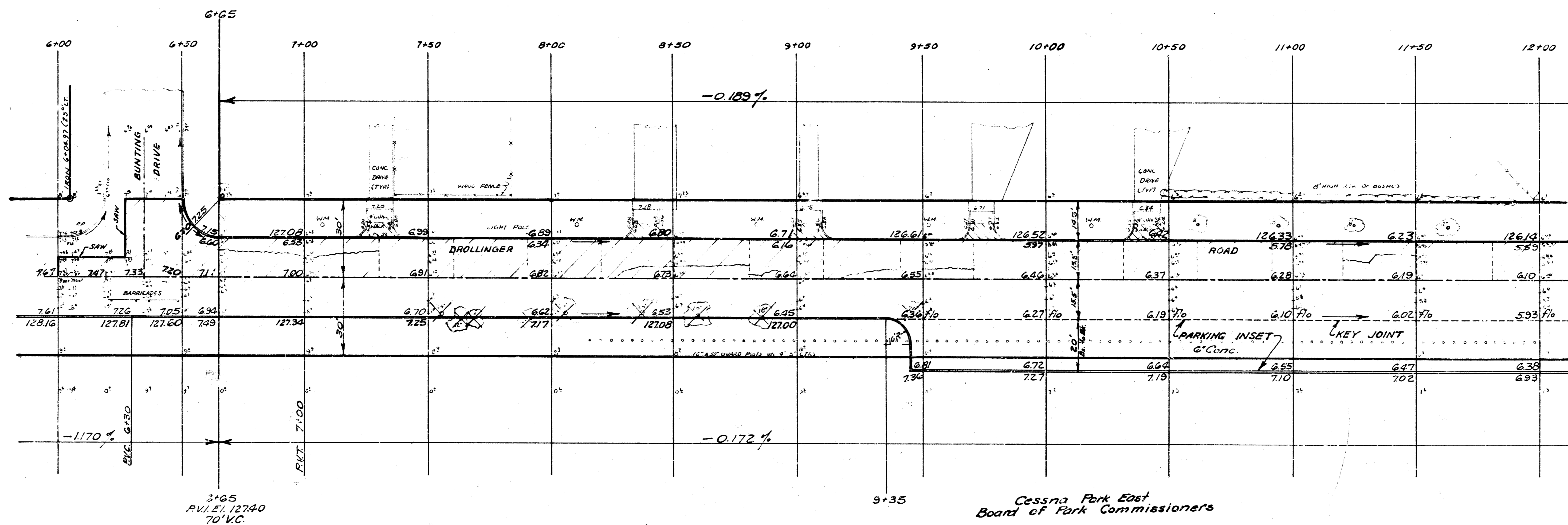


**NOTE:**

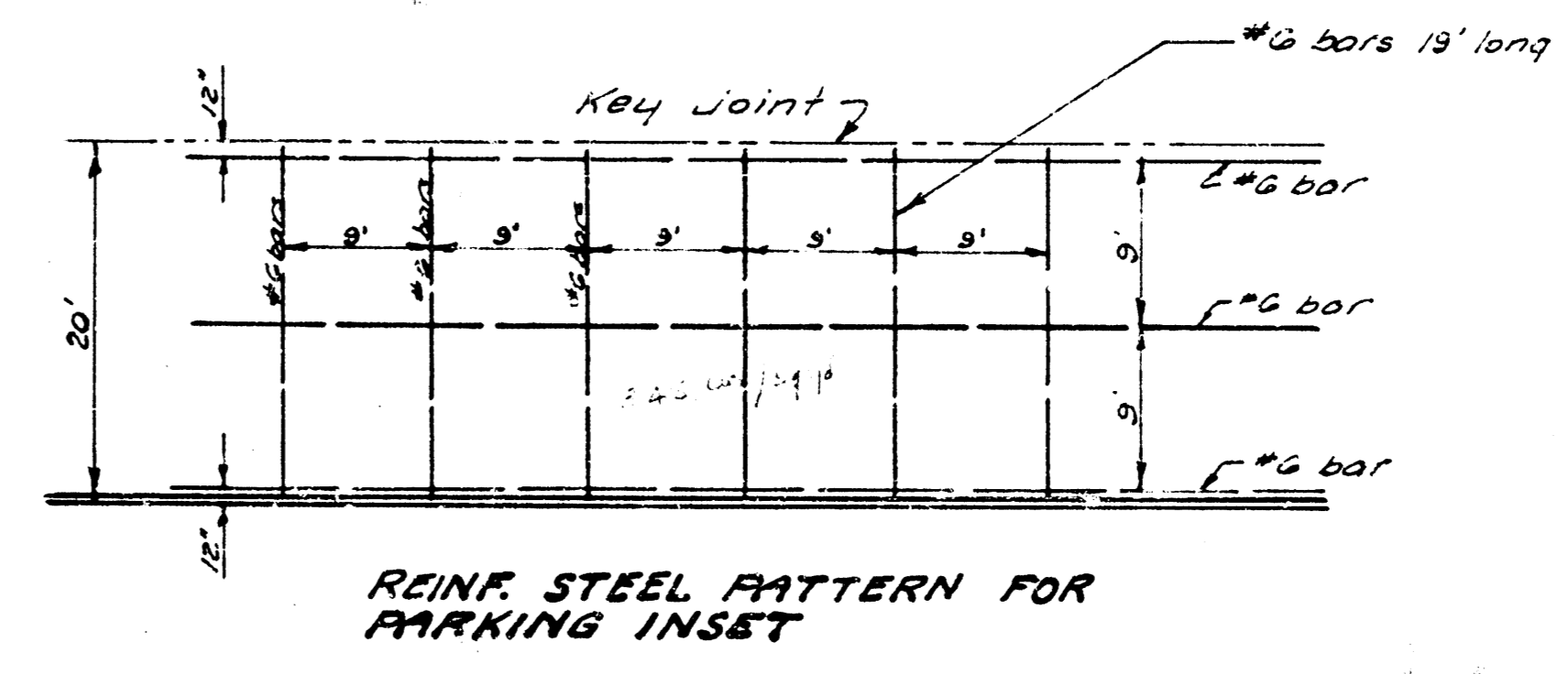
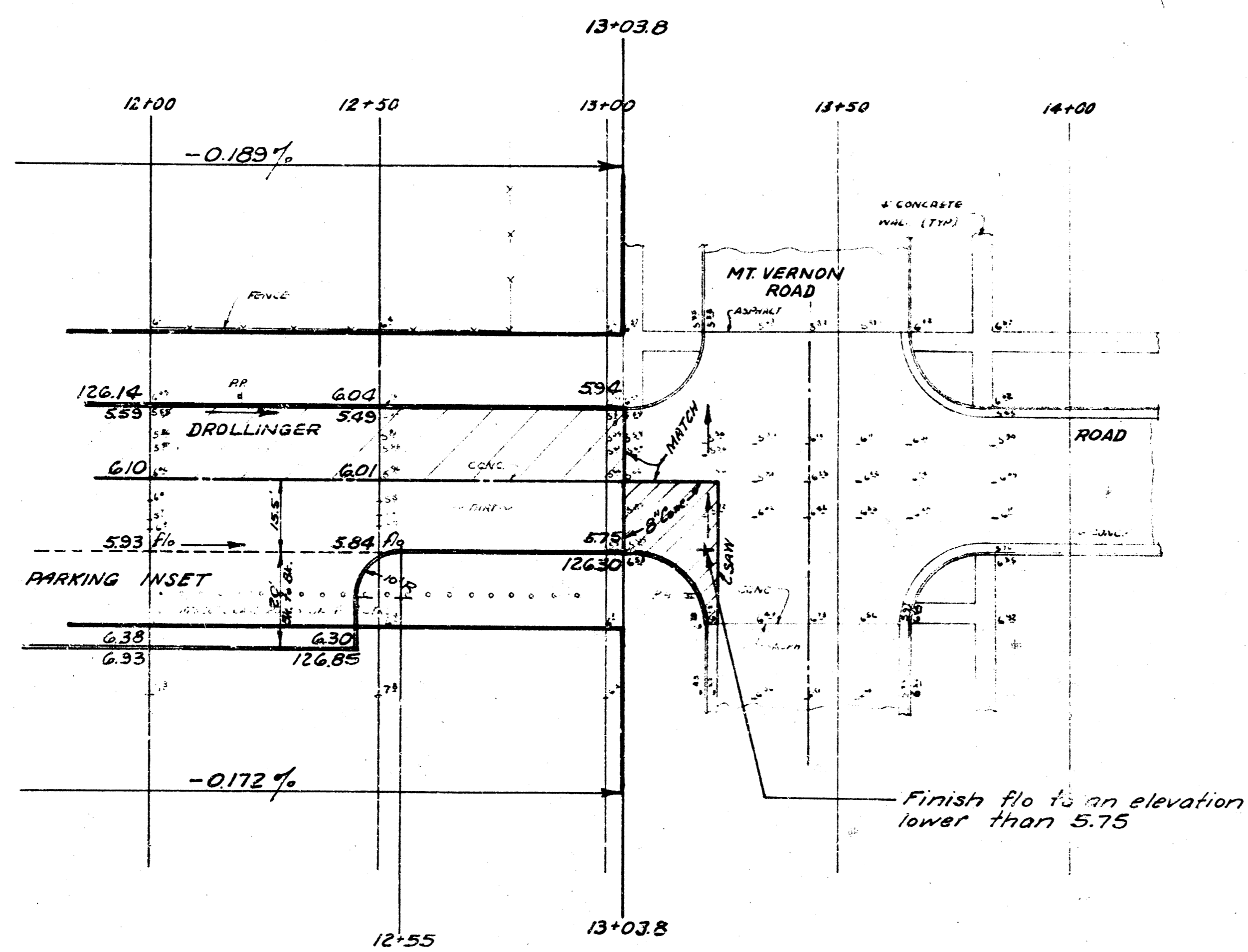
Remove intersection pavement as indicated and the west half of pavement from Sta. 6+65 to 13+03.8 and stabilize base with lime treatment. Replace with 6" Conc. pavement to elev's. shown.



B.M. 12326 7' in Muller Fire Hrd. N.W. Corner Bellair & Green Acres



Cassina Park East  
Board of Park Commissioners



BM 126.19 South Rim Of Manhole, North Side Mt Vernon @ Green Acres.