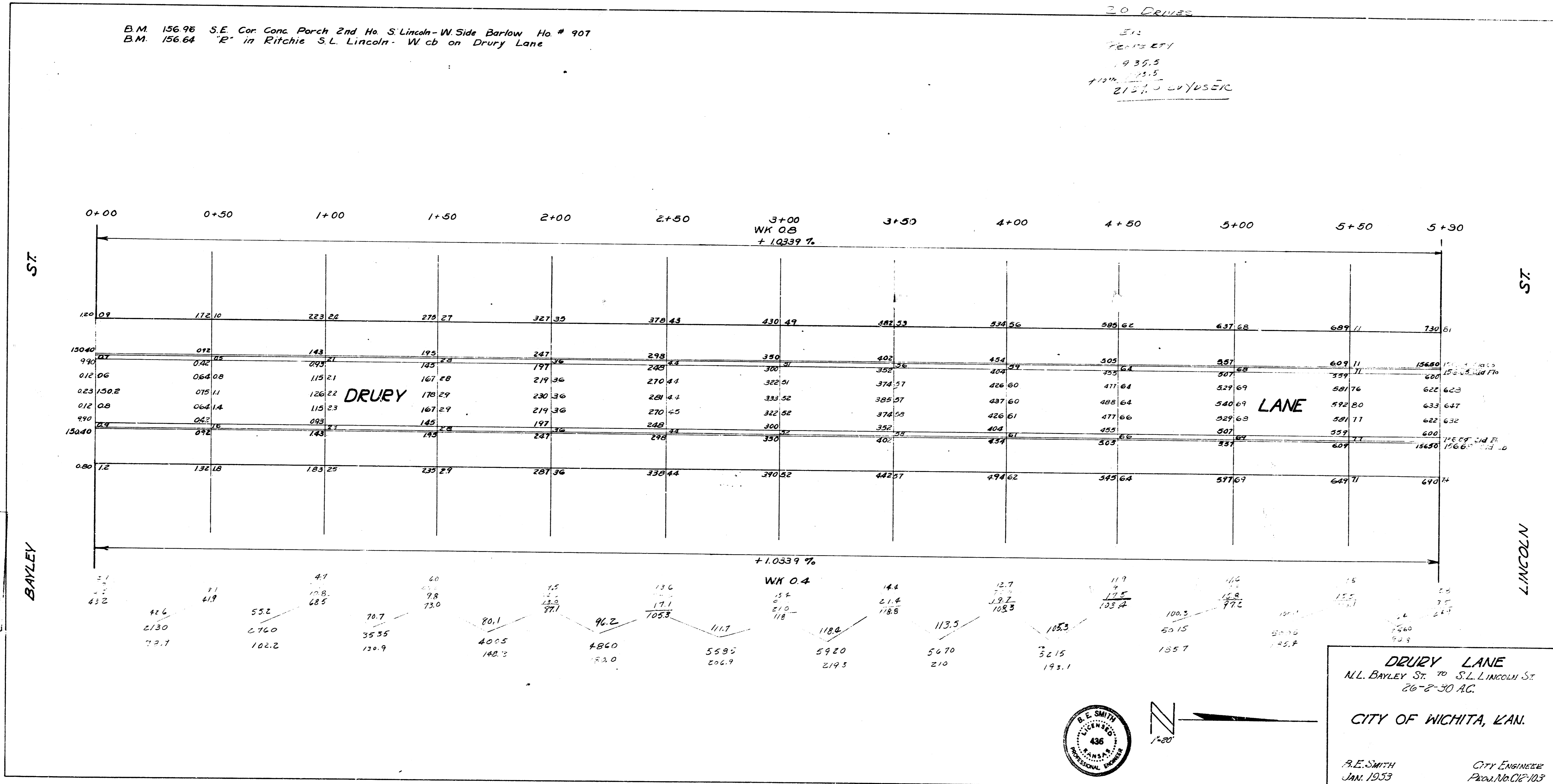


B.M. 156.96 S.E. Cor. Conc. Porch 2nd Ho. S. Lincoln - W. Side Barlow Ho. # 907  
 B.M. 156.64 "E" in Ritchie S.L. Lincoln - W. cb on Drury Lane

20 Drives  
 E12  
 2157.5  
 2157.5  
 2157.5



**DRURY LANE**  
 N.L. BAYLEY ST. TO S.L. LINCOLN ST.  
 26'-8"-50 AC.  
 CITY OF WICHITA, KAN.  
 B.E. SMITH  
 JAN. 1933  
 CITY ENGINEER  
 PROJ. NO. 62-103

