

PAVING PLANS FOR  
**PENSTEMON 4TH ADDITION**

**DUBLIN CIRCLE:** FROM THE SOUTH LINE OF GREENBRIAR TO AND INCLUDING THE CUL-DE-SAC  
**DUBLIN COURT:** LOTS 17 THROUGH 24, BLOCK 1, FROM THE NORTHWESTLY LINE OF DUBLIN CIRCLE TO AND INCLUDING THE CUL-DE-SAC  
**DUBLIN COURT:** LOTS 8 THROUGH 11, BLOCK 1, FROM THE SOUTHEASTERLY LINE OF DUBLIN CIRCLE TO AND INCLUDING THE CUL-DE-SAC

**PROJECT NO.**  
**472-76-245-81623-000-000-001**

CITY OF WICHITA, KANSAS  
**MICHAEL E. LINDEBAK CITY ENGINEER**  
SEP., 1987

**INDEX TO DRAWINGS**

| SHEET NO. | DESCRIPTION                          |
|-----------|--------------------------------------|
| 1         | Title Sheet                          |
| 2         | Paving Detail Sheet                  |
| 3         | Details                              |
| 4-5       | Dublin Circle                        |
| 6         | Dublin Court (Lot 17 Thru 24 Blk. 1) |
| 7         | Dublin Court (Lot 7 Thru 11 Blk. 1)  |
| 8-12      | Paving Cross Sections                |
| 13        | Final Plat                           |

**GENERAL NOTES**

- CURB AND GUTTER WITH WIDENED GUTTER TO BE PAID AS COMBINED CURB AND GUTTER.
- ALL DRAINAGE STRUCTURES "BY OTHERS".
- THE CONTRACTOR SHALL BE RESPONSIBLE FOR PRESERVING PROPERTY IRONS. THE CONTRACTOR SHALL BE REQUIRED TO RE-ESTABLISH ANY PROPERTY IRONS WHICH ARE DAMAGED OR DESTROYED BY HIS CONSTRUCTION OPERATIONS. SUCH IRONS SHALL BE RE-ESTABLISHED BY A LICENSED LAND SURVEYOR OR A LICENSED PROFESSIONAL ENGINEER IN ACCORDANCE WITH STATE LAWS.
- TRANSITION CURB FROM FULL HEIGHT COMBINATION CURB & GUTTER TO ROLL TYPE COMBINATION CURB AND GUTTER IS TO BE PAID AS BID FOR LINEAL FEET COMBINED CURB AND GUTTER (3 5/8" ROLL).
- CURB SHALL BE DEPRESSED THROUGH DRIVES (1 1/2"), WHERE ROLL TYPE CURB AND GUTTER IS CONSTRUCTED.
- 1-A INLET HOOKUPS TO BE BID EACH. WIDTH VARIES.
- ALL CONCRETE SHALL BE STANDARD PAVING MIX UNLESS OTHERWISE NOTED.
- EXISTING UTILITIES AND THEIR LOCATIONS, AS SHOWN ON THE PLANS, REPRESENT THE BEST INFORMATION OBTAINABLE FOR DESIGN. LOCATION INFORMATION HAS BEEN OBTAINED FROM THE VARIOUS UTILITY COMPANIES AND IS EITHER FROM COMPANY RECORD DRAWINGS OR COMPANY PROVIDED FIELD LOCATIONS. THE PLAN LOCATIONS SHOWN ARE NOT GUARANTEED. ADDITIONAL EXISTING UTILITIES MAY ALSO BE ENCOUNTERED.
- CONTRACTOR WILL BE REQUIRED TO PROVIDE A MINIMUM ADVANCE NOTICE OF TWENTY-FOUR (24) HOURS TO UTILITY COMPANIES PRIOR TO STARTING ANY EXCAVATION AS FOLLOWS:
 

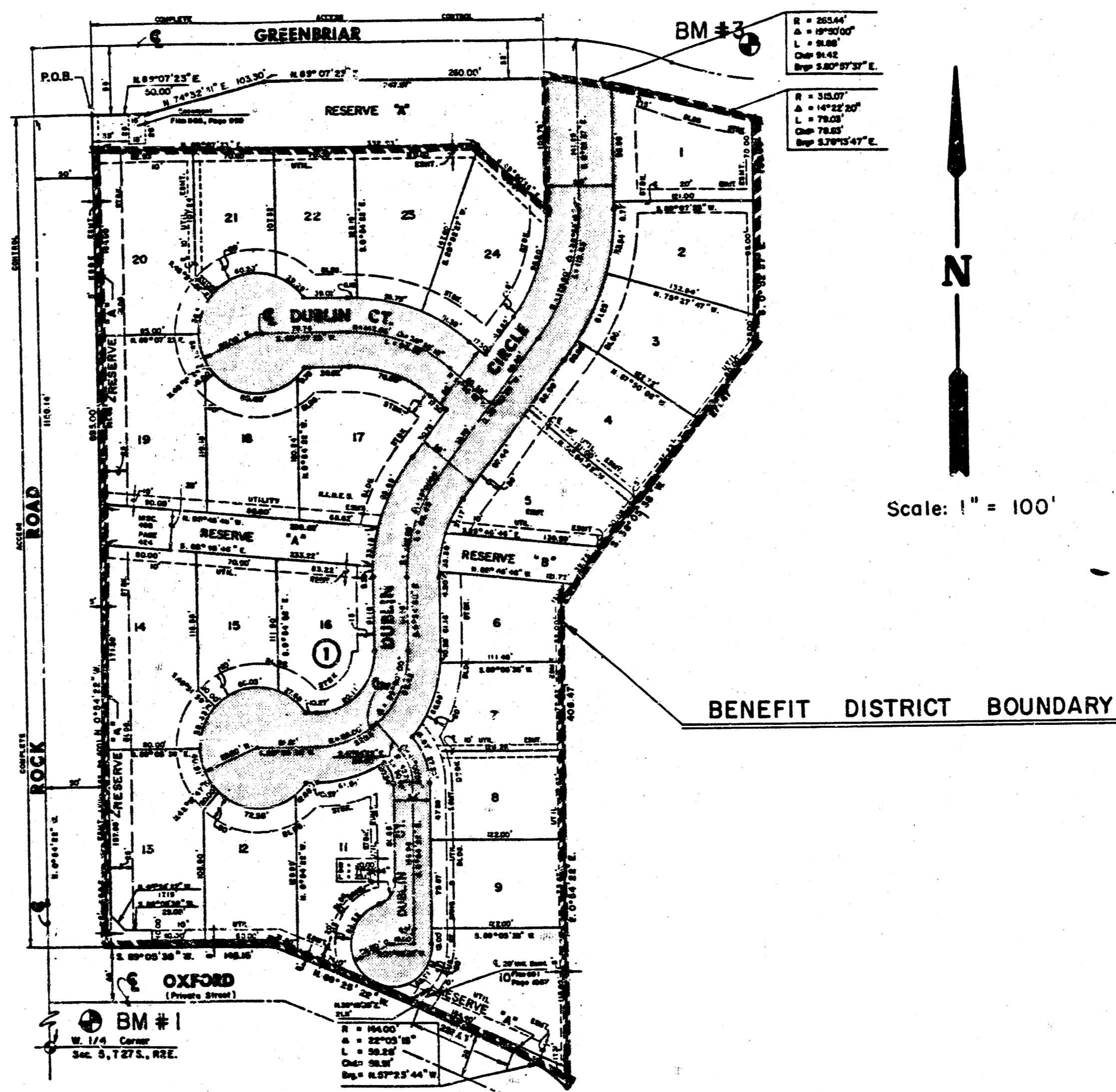
|                                     |                      |
|-------------------------------------|----------------------|
| ARKLA GAS COMPANY                   | 942-8350 or 263-8161 |
| SOUTHWESTERN BELL TELEPHONE COMPANY | 1-316-571-2611       |
| CARL FVISTON                        | 262-4270 or 263-2061 |
| KPL GAS SERVICE                     | 263-7511             |
| KANSAS GAS & ELECTRIC               | 254-1141             |
| CITY OF WICHITA WATER DEPARTMENT    | 268-4908             |
| CITY OF WICHITA SEWER DEPARTMENT    | 268-4071             |
- A SAW CUT OF AT LEAST ONE-HALF THE DEPTH OF EXISTING SURFACE COURSES OR ONE-FOURTH THE DEPTH OF THE EXISTING TOTAL PAVEMENT THICKNESS SHALL BE PROVIDED AT LOCATIONS WHERE PROPOSED CONSTRUCTION ABUTS AN EXISTING SURFACE COURSE OR PAVEMENT FOR WHICH PARTIAL REMOVAL OF THAT SURFACE OF PAVEMENT IS REQUIRED. SAWED JOINT TO FACILITATE REMOVAL WITHIN THREE (3) FEET OF EXISTING JOINTS WILL NOT BE PERMITTED AND FOR SUCH INSTANCES THE LIMITS OF REMOVAL SHALL EXTEND TO THE EXISTING JOINT.

**BENCH MARKS**

- B.M. #1** "□" cut on west side of base of "Y" pole at the west quarter corner Section 5, Township 27 South, Range 2 East. Elev. = 218.63
- B.M. #2** Spike step in southwest corner of "Y" pole + 650.00 feet east of W Quarter Cor 5 - 27S-2E. Elev. = 208.22
- B.M. #3** "□" cut on top of north curb of Greenbriar north of the northeast corner of Penstemon 4th Addition. Elev. = 219.15

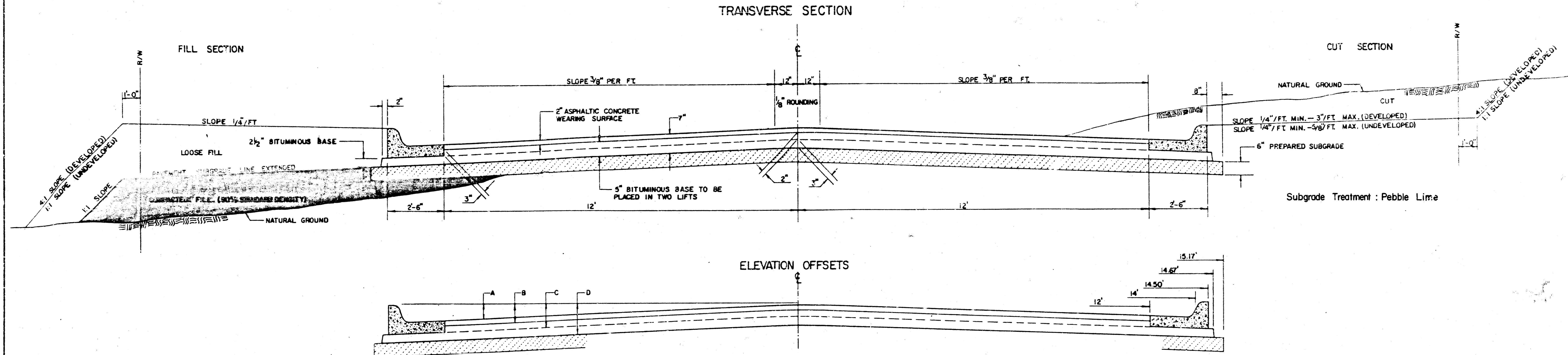
**CAUTION:**

KPL Gas Lines Shown On This Plan Are From KPL Office Records; These Gas Lines Have Not Been Field Flagged And Measured. Telephone, KGE & Cable TV Lines Shown Were Flagged And Measured.



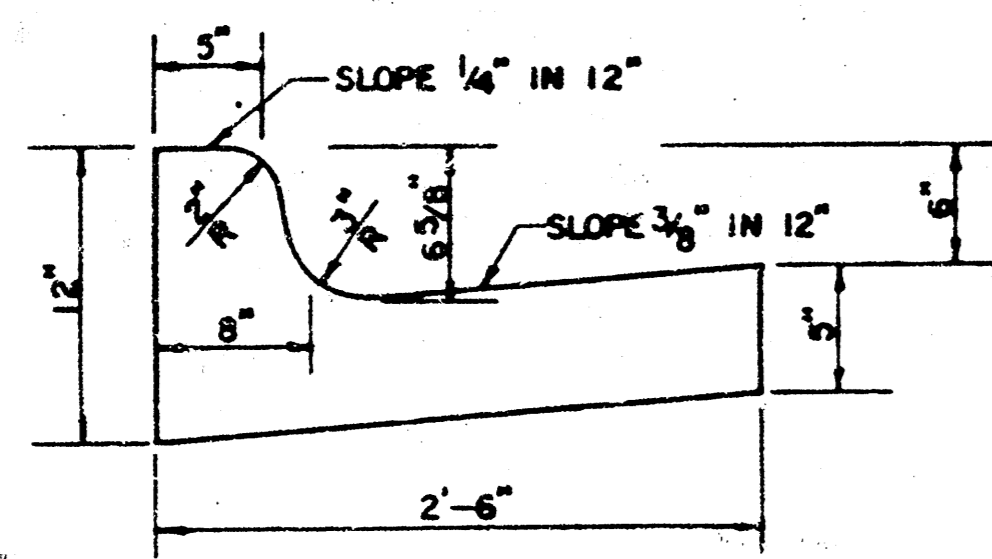
|   |  |                                 |
|---|--|---------------------------------|
| <b>MK<br/>EL</b>  | <b>PENSTEMON<br/>4TH ADDITION<br/>PAVING PLANS</b> | Design: F F                     |
|   |  | Drawn by: ECG                   |
|   |  | Checked by:                     |
|   |  | Date:                           |
|   |  | Job No:                         |
| MID-KANSAS ENGINEERING CONSULTANTS PA<br>3500 NORTH ROCK ROAD<br>BUILDING #800<br>WICHITA, KANSAS 67226 |  | Sheet: <b>1</b><br>of <b>13</b> |

# TYPICAL 29' PAVEMENT DETAILS

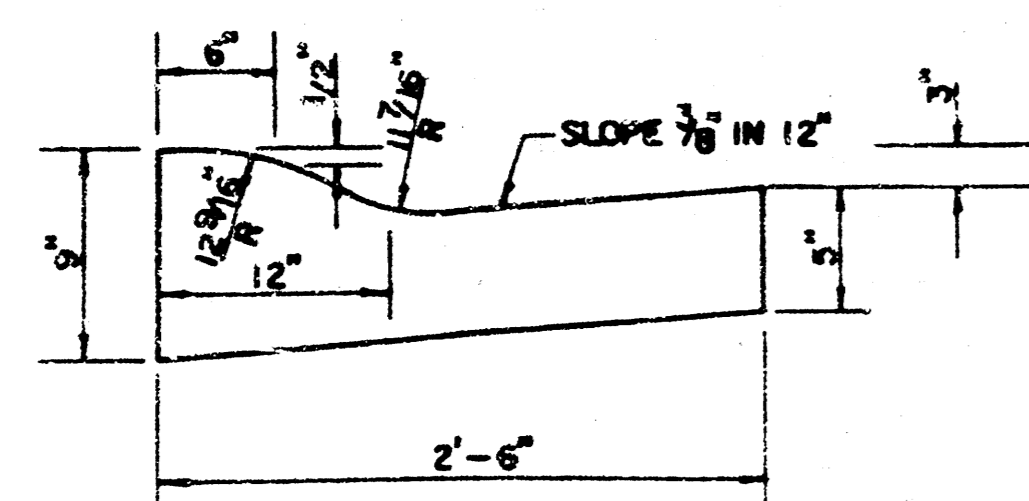


|   | DISTANCE FROM CENTERLINE (LT. & RT.) |      |      |      |      |      |      |      |      |       |        |        |
|---|--------------------------------------|------|------|------|------|------|------|------|------|-------|--------|--------|
|   | 0'                                   | 2'   | 4'   | 6'   | 7'   | 8'   | 10'  | 12'  | 14'  | 14.5' | 14.67' | 15.17' |
| A: TOP OF CURBS TO TOP OF SURFACE LIFT    | 0.13                                 | 0.18 | 0.24 | 0.30 | 0.33 | 0.36 | 0.43 | 0.49 | —    | —     | —      | —      |
| B: TOP OF CURBS TO TOP OF UPPER BASE LIFT | 0.30                                 | 0.35 | 0.41 | 0.47 | 0.50 | 0.53 | 0.60 | 0.66 | —    | —     | —      | —      |
| C: TOP OF CURBS TO TOP OF LOWER BASE LIFT | 0.47                                 | 0.52 | 0.60 | 0.68 | 0.71 | 0.75 | 0.83 | 0.90 | 0.98 | 1.00  | 1.01   | —      |
| D: TOP OF CURBS TO TOP OF SUBGRADE        | 0.72                                 | 0.77 | 0.84 | 0.91 | 0.94 | 0.98 | 1.05 | 1.12 | 1.19 | 1.21  | 1.21   | 1.23   |

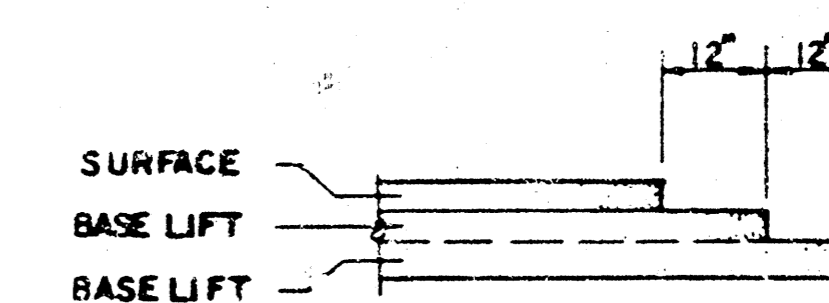
COMBINED CURB & GUTTER



ROLL TYPE COMBINED CURB & GUTTER



TRANSVERSE CONSTRUCTION JOINTS

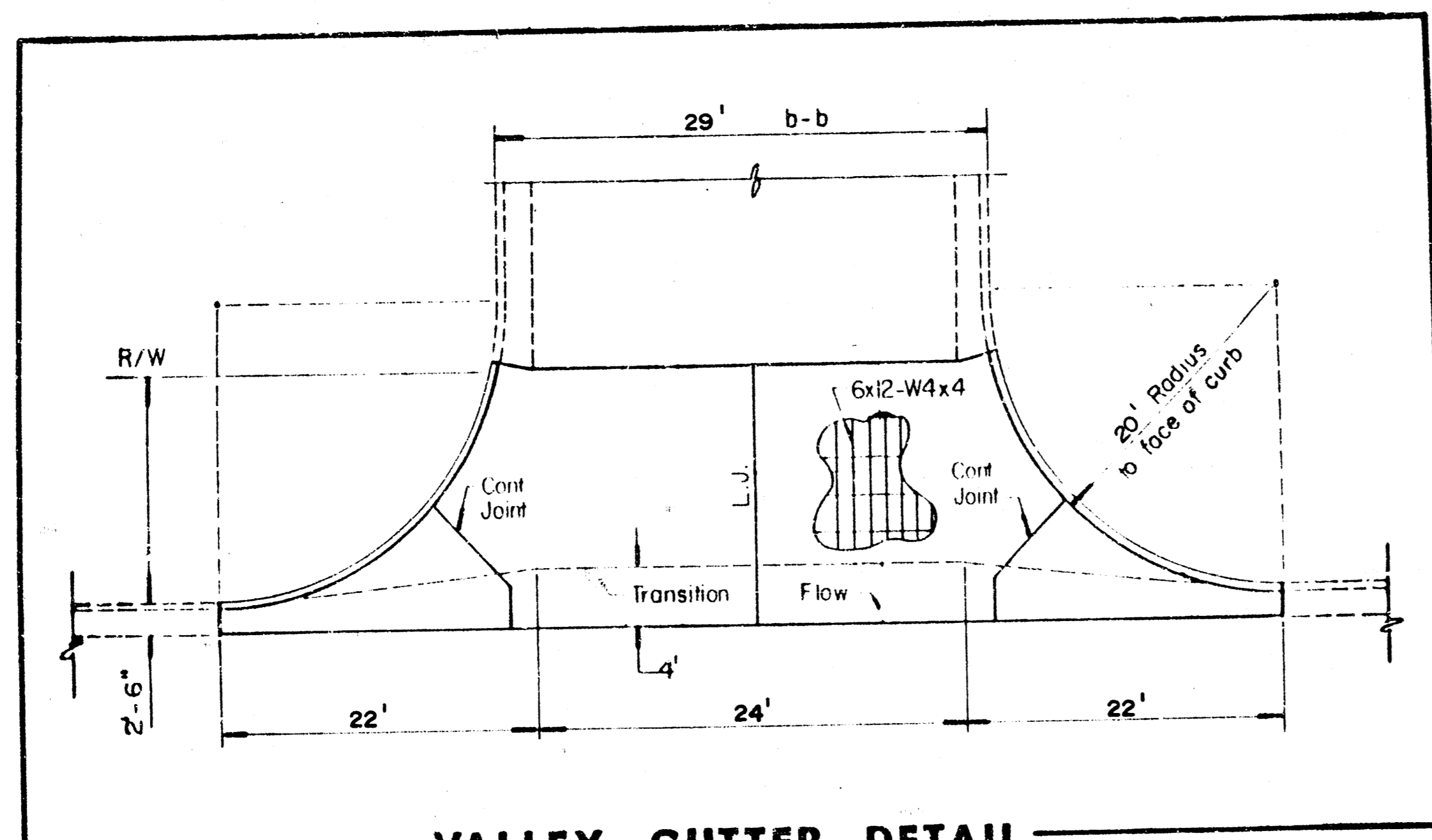


TRANSVERSE CONSTRUCTION JOINTS SHALL BE CONSTRUCTED IN FLEXIBLE BASE PAVEMENTS AT LOCATIONS WHERE PAVEMENT JOINS EXISTING FLEXIBLE BASE PAVEMENT AS SHOWN BY THE DETAIL. ALL COSTS ASSOCIATED WITH THE CONSTRUCTION OF THE TRANSVERSE JOINT SHALL BE INCLUDED IN THE BID PRICE FOR SQUARE YARDS 7" ASPHALTIC CONCRETE (5" BITUMINOUS BASE).

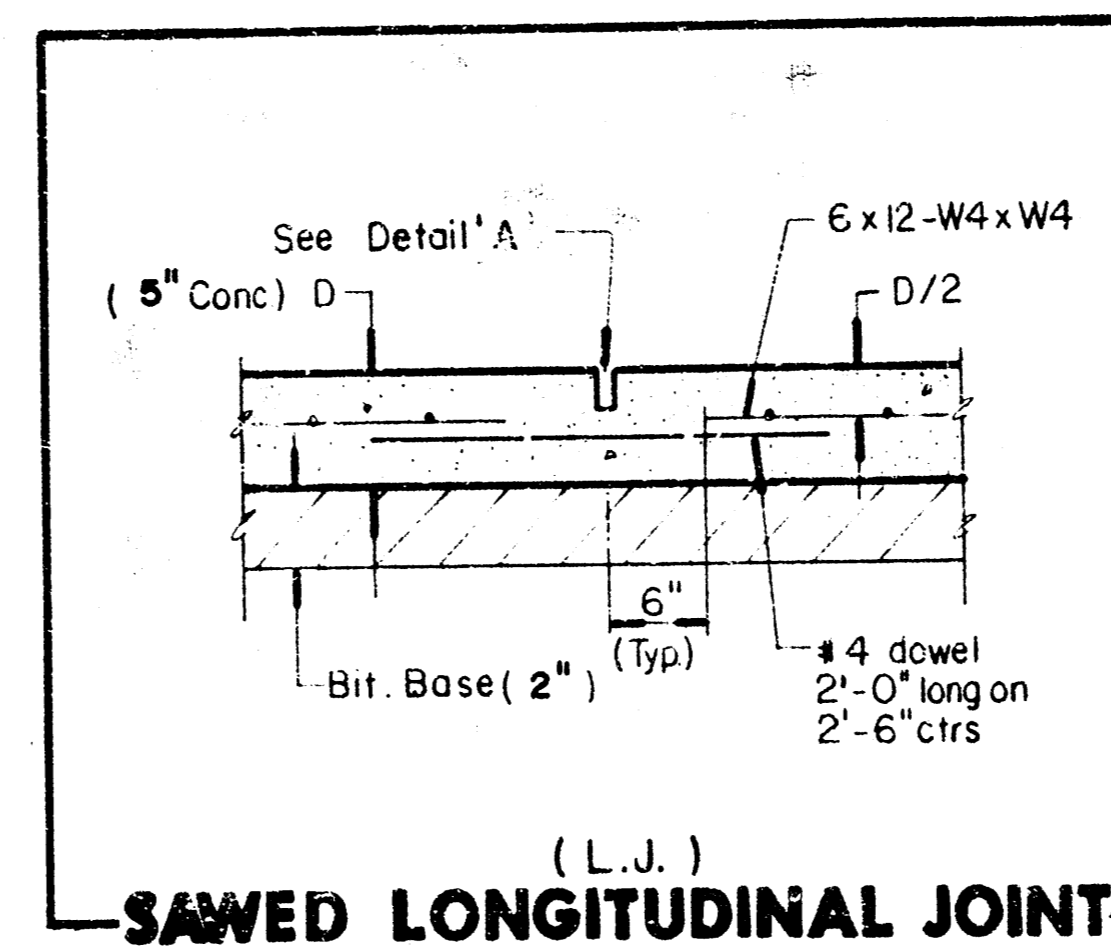
GENERAL NOTES

- 1) THE ASPHALTIC CONCRETE PAVEMENT BETWEEN THE COMBINED CURB AND GUTTER SHALL BE PAID AS SQUARE YARDS OF 7" ASPHALTIC CONCRETE (5" BITUMINOUS BASE).
- 2) THE BITUMINOUS BASE UNDER AND BEHIND THE COMBINED CURB AND GUTTER SHALL BE PAID AS SQUARE YARDS OF 2 1/2" BITUMINOUS BASE.
- 3) A TACK COAT OF EMULSIFIED ASPHALT (SC-1H OR CSS-1H) SHALL BE APPLIED AT AN APPROXIMATE RATE OF 0.05 GALLONS PER SQUARE YARD BETWEEN EACH LIFT OF ASPHALTIC MATERIAL.
- 4) BITUMINOUS BASE AND ASPHALTIC CONCRETE WEARING SURFACE SHALL BE PLACED WITH A LAYDOWN MACHINE HAVING AUTOMATIC CONTROLS FOR LINE AND GRADE.
- 5) CONSTRUCTION JOINTS IN EACH LIFT SHALL BE STAGGERED A MINIMUM DISTANCE OF ONE (1) FOOT FROM JOINTS IN PRECEDING LIFTS AND PLACED SO THAT A JOINT WILL BE CONSTRUCTED ON THE CENTERLINE OF THE TOP LIFT.
- 6) CONTRACTOR TO BID ONLY ONE SUBGRADE TREATMENT ALTERNATE WHEN ALTERNATES ARE PROVIDED IN THE PROPOSAL AND CONTRACT. THE ALTERNATE CHOSEN BY THE SUCCESSFUL BIDDER SHALL BE USED IN CONSTRUCTING THIS PROJECT.

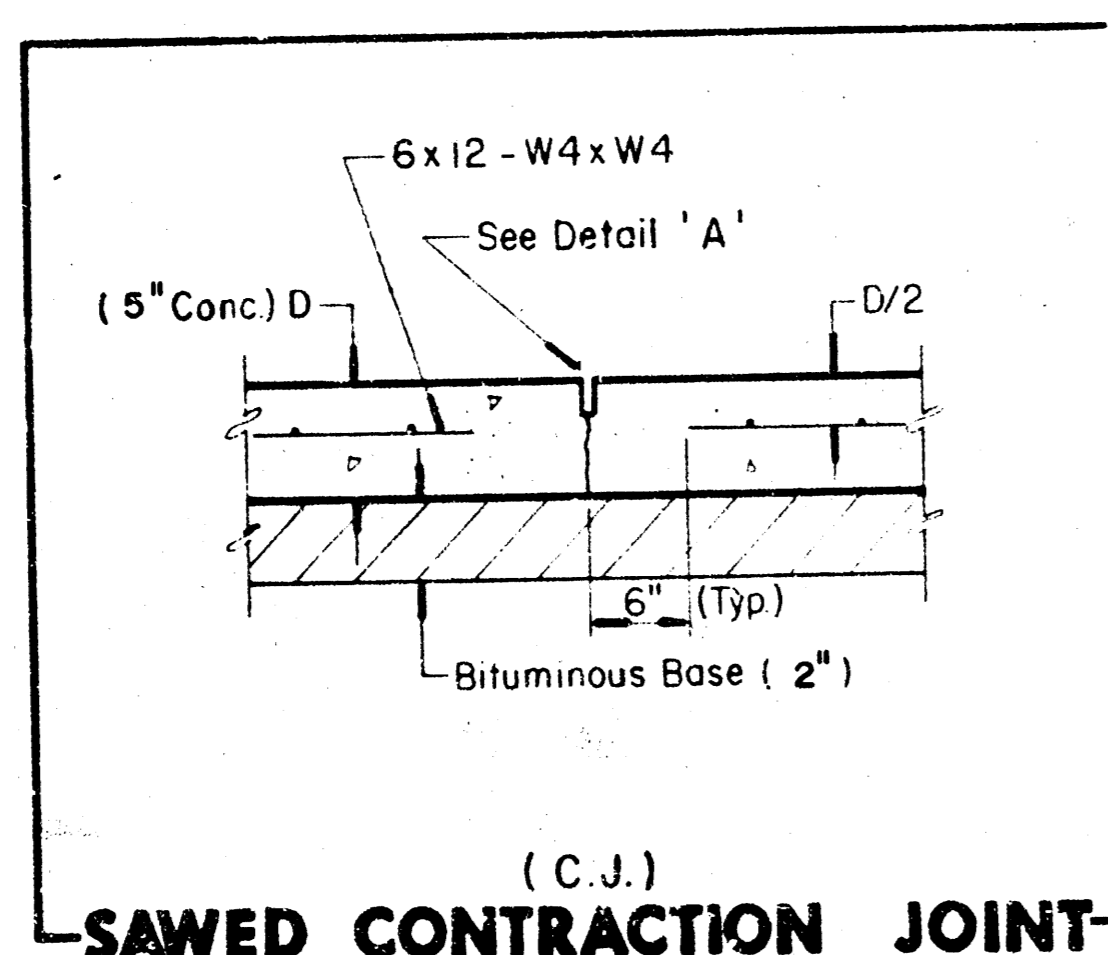
7 INCH RESIDENTIAL ASPHALTIC CONCRETE PAVEMENT WITH 5 INCH BITUMINOUS BASE  
 CITY OF WICHITA, KANSAS  
 PROJECT NUMBER 472-76-245-81623-000-000-001



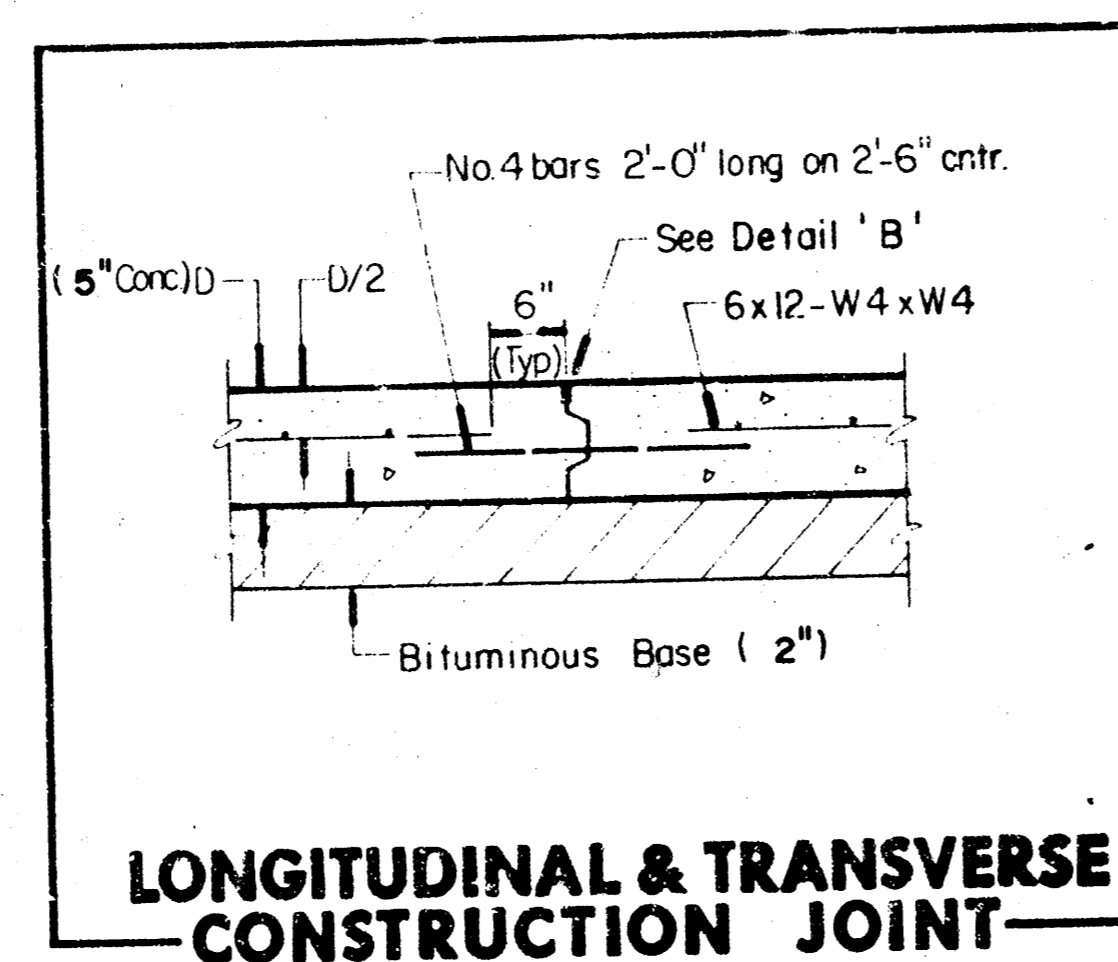
**VALLEY GUTTER DETAIL**  
 Dublin Circle & Greenbriar Intersection  
 Dublin Circle & Dublin Court Intersection



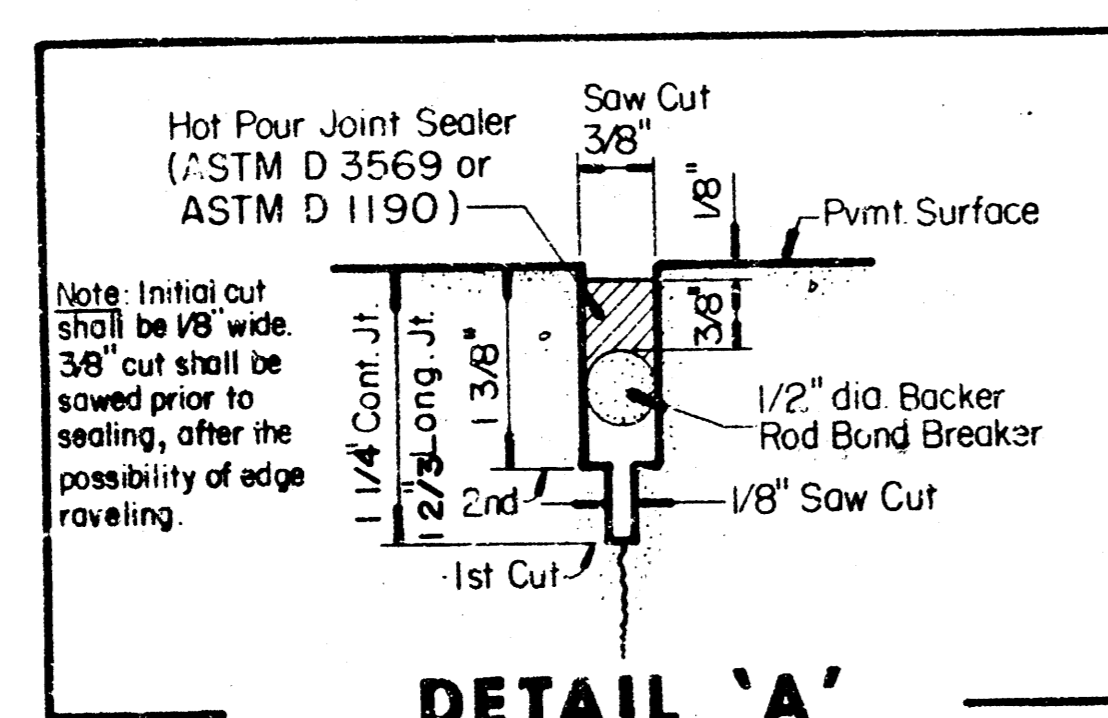
(L.J.)  
**SAWED LONGITUDINAL JOINT**



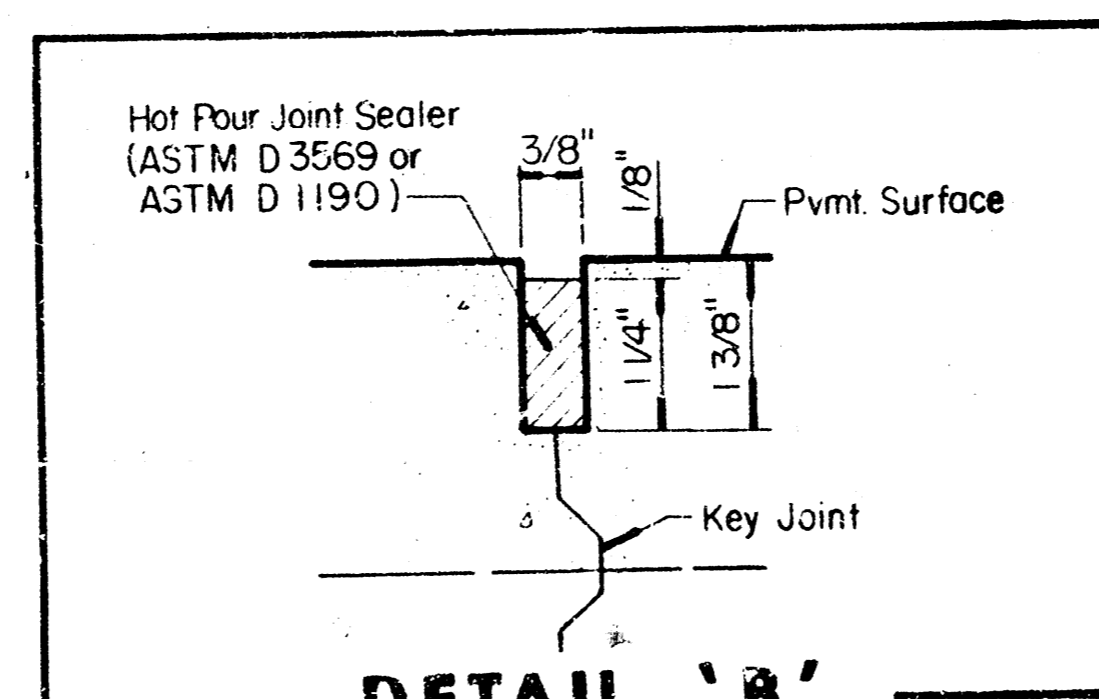
(C.J.)  
**SAWED CONTRACTION JOINT**



**LONGITUDINAL & TRANSVERSE CONSTRUCTION JOINT**



**DETAIL 'A'**



**DETAIL 'B'**

|  |                |   |
|--|----------------|---|
|  | <b>DETAILS</b> | 3/13  |
|  |                | MID-KANSAS ENGINEERING CONSULTANTS PA<br>1500 NORTH ROCK ROAD<br>BUILDING #800<br>WICHITA, KANSAS 67206<br>682-6561 |

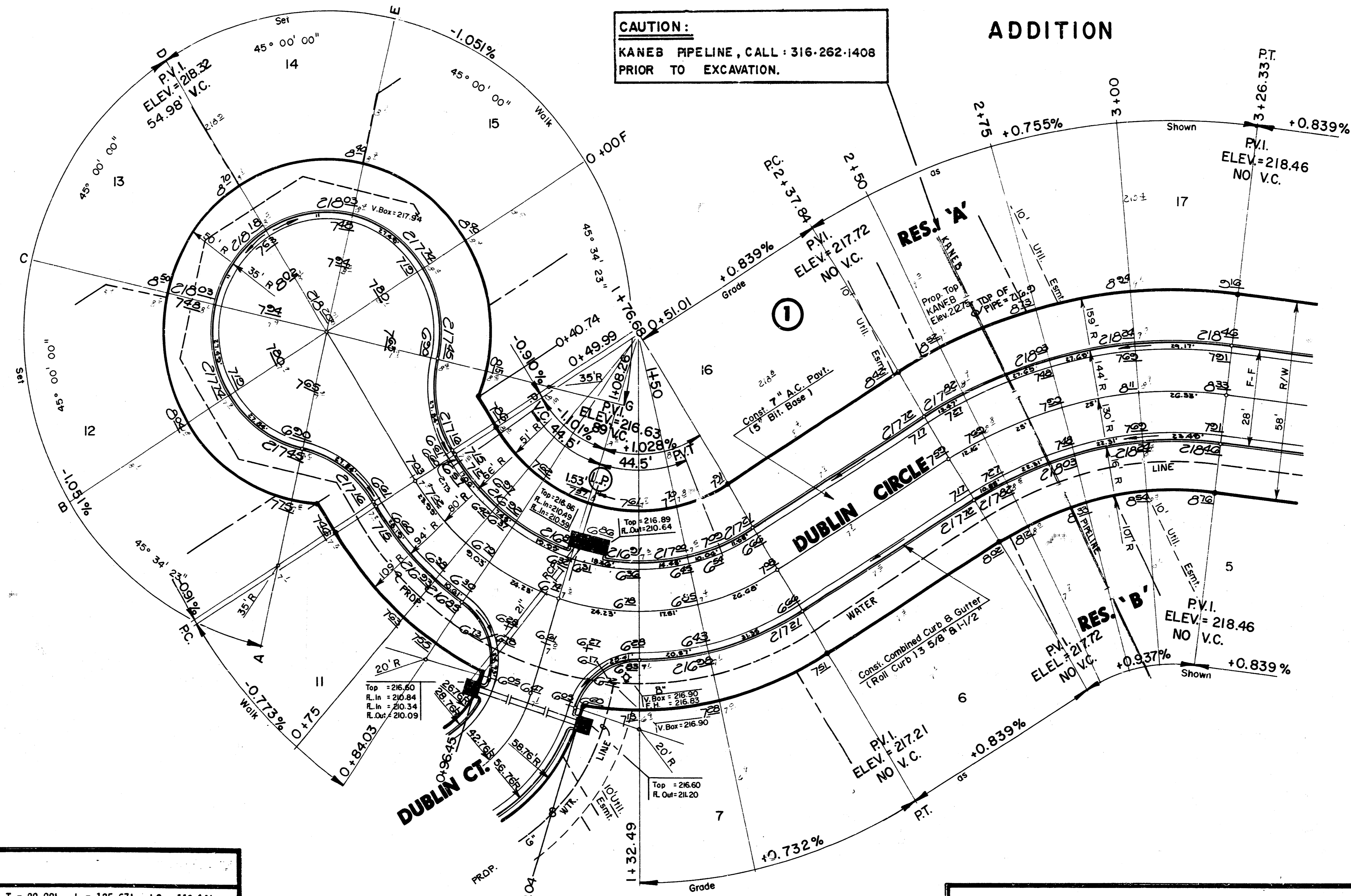
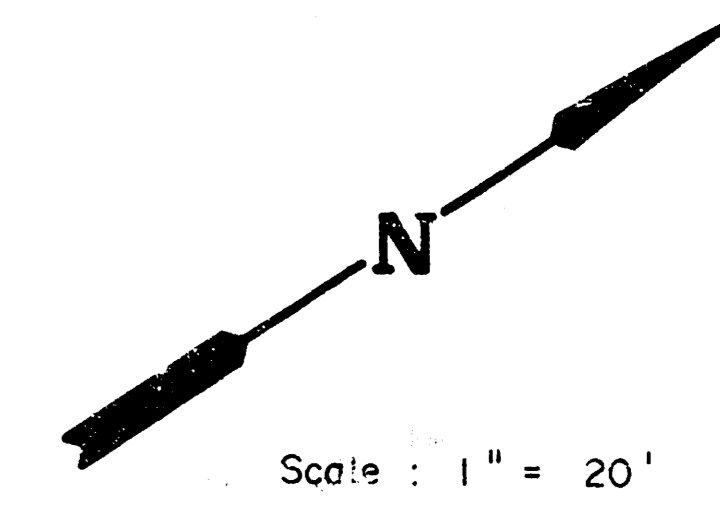
**NOTE:**  
Top Of Curb Elevations Shown For Full Curb, Construct Combined Curb & Gutter (Roll Type).

**PENSTEMON**

**4 TH.**

**ADDITION**

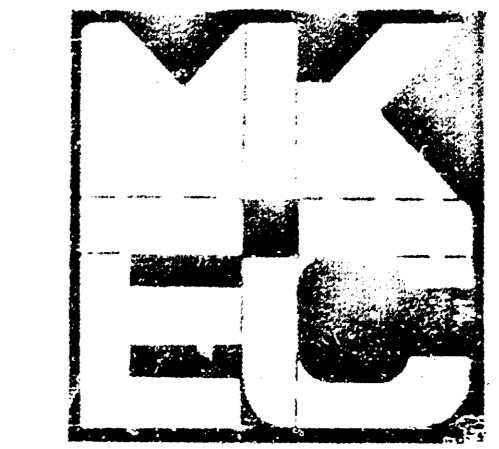
**CAUTION:**  
KANE PIPELINE, CALL 316-262-1408 PRIOR TO EXCAVATION.



| CURVE DATA BASED ON Centerline $\Delta/2 = 45^{\circ}00'00''$ |        |              |              |            |                          |
|---|--------|--------------|--------------|------------|--------------------------|
| STATION   | ARC    | CHORD LENGTH |              | DEFLECTION | TOTAL DEFLECTION         |
|   |        | 8' OFF L'tcd | 8' OFF R'tcd |            |                          |
| 0+51.01   | -      | -            | -            | -          | 0°00'00"                 |
| 0+75.00   | 23.99' | 17.33'       | 30.47'       | 08°35'26"  | 08°35'26"                |
| 0+84.03   | 9.03'  | 6.54'        | 11.51'       | 03°14'00"  | 11°49'26"                |
| 1+08.26   | 24.23' | 17.50'       | -            | 08°40'35"  | 20°30'01"                |
| 1+32.49   | 24.23' | 17.50'       | 60.85'       | 08°40'35"  | 29°10'36"                |
| 1+50.00   | 17.51' | 12.67'       | 22.28'       | 06°16'11"  | 35°26'47"                |
| 1+76.68   | 26.68' | 19.25'       | 33.86'       | 09°33'13"  | 45°00'00"                |
|   |        |              |              |            | Def./Ft. = 21.48592 Min. |

| CURVE DATA BASED ON Centerline $\Delta/2 = 19^{\circ}30'00''$ |        |              |              |            |                         |
|---|--------|--------------|--------------|------------|-------------------------|
| STATION   | ARC    | CHORD LENGTH |              | DEFLECTION | TOTAL DEFLECTION        |
|   |        | 8' OFF L'tcd | 8' OFF R'tcd |            |                         |
| 2+37.84   | -      | -            | -            | -          | 0°00'00"                |
| 2+50.00   | 12.16' | 14.21'       | 10.10'       | 02°40'47"  | 02°40'47"               |
| 2+75.00   | 25.00' | 29.19'       | 20.74'       | 05°30'33"  | 08°11'20"               |
| 3+00.00   | 25.00' | 29.19'       | 20.74'       | 05°30'33"  | 13°41'53"               |
| 3+26.33   | 26.33' | 30.73'       | 21.84'       | 05°48'07"  | 19°30'00"               |
|   |        |              |              |            | Def./Ft. = 13.2221 Min. |

Excavation  
1984.5  
198.5  
2183.0 C.Y.  
Manipulation = 4,805.2 S.Y.



CITY OF WICHITA  
**DUBLIN CIRCLE**  
PROJECT NO.  
472-76-245-81623-000-000-001

MID-KANSAS ENGINEERING CONSULTANTS PA  
3500 NORTH ROCK ROAD  
BUILDING #800  
WICHITA, KANSAS 67226

682-6561

F.F.  
E.C.G.  
Sheet 4 of 13

NOTE:  
Top Of Curb Elevations Shown For Full Curb, Construct Combined Curb & Gutter (Roll Type).

DUBLIN CIRCLE & GREENBRIAR  
INTERSECTION QUANTITIES

- S.Y. Concrete Pavement
- S.Y. Asphaltic Conc. Pavement ( Bituminous Base)
- S.Y. Bituminous Base
- L.F. Combined Curb & Gutter
- 66.8 L.F. Monolithic Edge Curb (6 5/8")
- S.F. 4" Wheelchair Ramp
- S.F. 4" Walk
- C.Y. Excavation
- C.Y. Compacted Fill
- Lbs. Reinforcing Steel
- 116.2 S.Y. Manipulation
- Tons Lime or Cement
- 115.7 S.Y. V.G. 5" Concrete & 2" Asphaltic Concrete Base

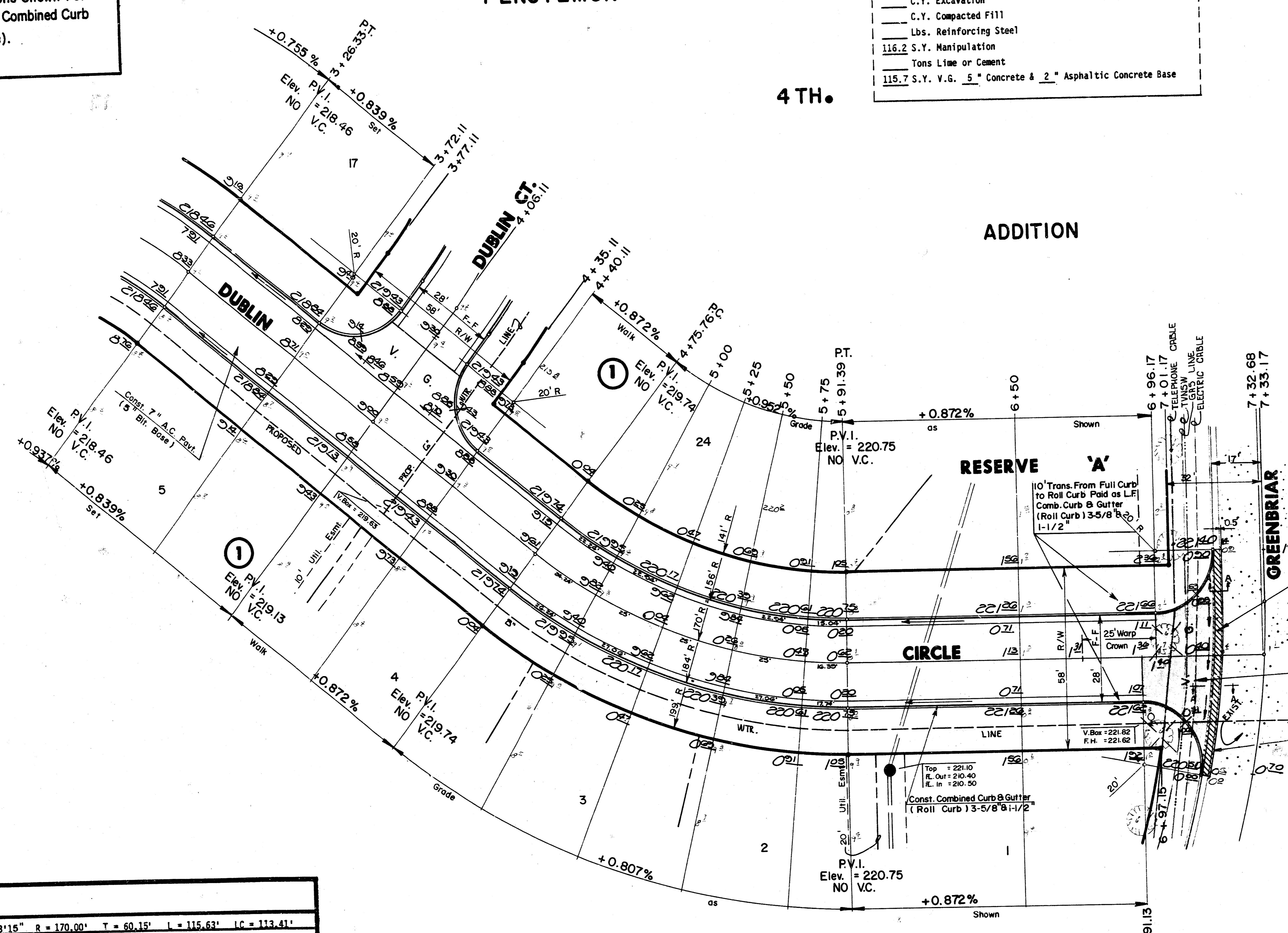


Scale: 1" = 20'

PENSTEMON

4 TH.

ADDITION

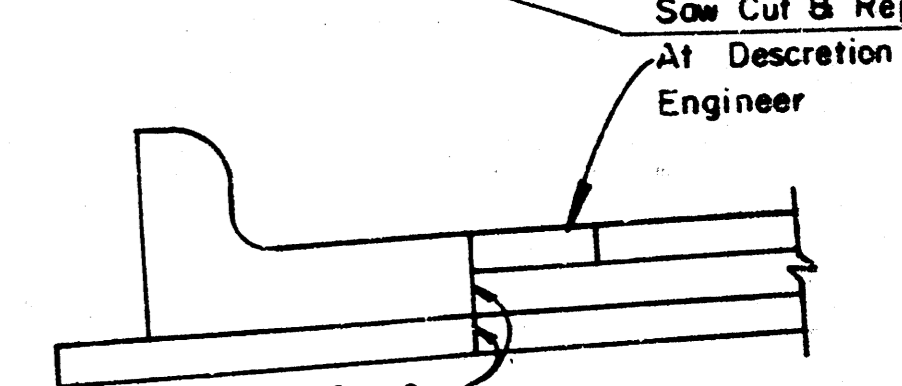


Saw Cut Exist Pavt B  
Remove 78" L.F. Of Existing Combined  
Curb & Gutter To Nearest Joint  
Match With Exist. R.  
See Section A-A Detail.

Const. 7" V.G. (5" Conc.  
& 2" Bit. Base) & Match  
Exist. Pavement:

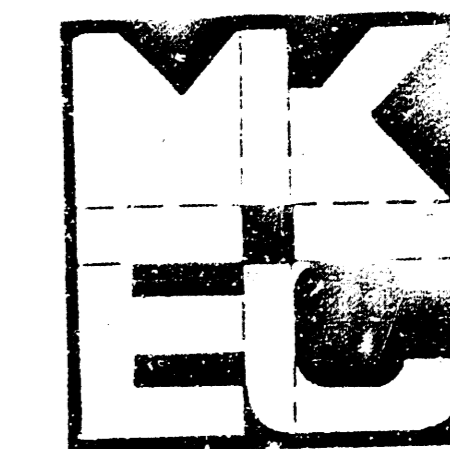
Const. 2" Asphaltic Conc.  
(Wearing Surface)

Saw Cut & Repair  
At Discretion Of  
Engineer



SECTION A-A

| CURVE DATA BASED ON Centerline $\Delta/2 = 19^{\circ}29'08''$ |        |              |             |            |                  |
|---|--------|--------------|-------------|------------|------------------|
| STATION   | ARC    | CHORD LENGTH |             | DEFLECTION | TOTAL DEFLECTION |
|   |        | 8' Off Ltcd  | 8' Off Rtcd |            |                  |
| 4+75.76   | -      | -            | -           | -          | 0°00'00"         |
| 5+00.00   | 24.24' | 21.09'       | 27.35'      | 04°05'05"  | 04°05'05"        |
| 5+25.00   | 25.00' | 21.75'       | 28.21'      | 04°12'47"  | 08°17'52"        |
| 5+50.00   | 25.00' | 21.75'       | 28.21'      | 04°12'47"  | 12°30'39"        |
| 5+75.00   | 25.00' | 21.75'       | 28.21'      | 04°12'47"  | 16°43'26"        |
| 5+91.39   | 16.33' | 14.26'       | 18.50'      | 02°45'42"  | 19°29'08"        |
| Def./Ft. = 10.1110 Min.                                       |        |              |             |            |                  |



CITY OF WICHITA  
**DUBLIN CIRCLE**  
PROJECT NO.  
472-76-245-81623-000-000-001

MID-KANSAS ENGINEERING CONSULTANTS PA  
3500 NORTH ROCK ROAD  
BUILDING #800  
WICHITA, KANSAS 67226  
682-6561

Checked by: FF  
Designed by: ECG  
Date:  
Sheet: 5  
of: 13

**NOTE:**  
 Top Of Curb Elevations Shown For  
 Full Curb, Construct Combined Curb  
 & Gutter (Roll Type).

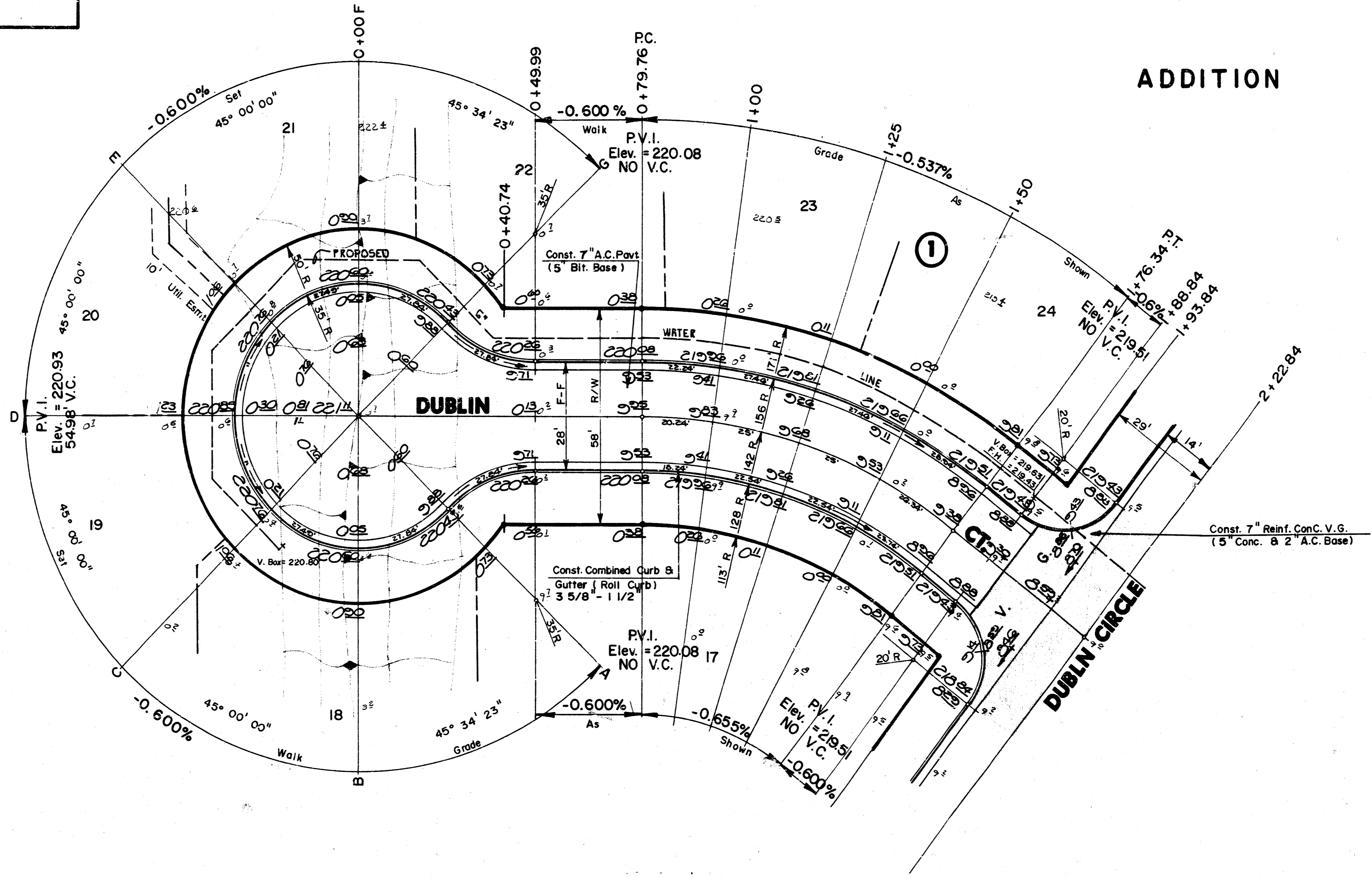
**PENSTEMON**

**4TH.**

**ADDITION**



Scale: 1" = 20'



| CURVE DATA BASED ON Centerline $\Delta / 2 = 19^{\circ}29'08''$ |        |              |            |            |                  |
|---|--------|--------------|------------|------------|------------------|
| STATION   | ARC    | CHORD LENGTH |            | DEFLECTION | TOTAL DEFLECTION |
|   |        | 8' OFF LcB   | 8' OFF Rcb |            |                  |
| 0+79.76   | -      | -            | -          | -          | 0°00'00"         |
| 1+00.00   | 20.24' | 23.36'       | 17.09'     | 04°08'01"  | 04°08'01"        |
| 1+25.00   | 25.00' | 28.84'       | 21.10'     | 05°02'38"  | 09°07'39"        |
| 1+50.00   | 25.00' | 28.84'       | 21.10'     | 05°02'38"  | 14°10'17"        |
| 1+76.34   | 26.34' | 30.38'       | 22.23'     | 05°18'51"  | 19°29'08"        |
| Def./Ft. = 12.1047 Min.   |        |              |            |            |                  |

**DUBLIN COURT (LOT 17-24, BLOCK 1) & DUBLIN CIRCLE INTERSECTION QUANTITIES**

|       |           |  |
|-------|-----------|--|
| —     | S.Y.      | Concrete Pavement                                |
| 90.7  | S.Y.      | 7" Asphaltic Conc. Pavement (5" Bituminous Base) |
| —     | S.Y.      | Bituminous Base                                  |
| —     | L.F.      | Combined Curb & Gutter                           |
| 52.5  | L.F.      | Monolithic Edge Curb (6 5/8")                    |
| —     | S.F.      | 4" Wheelchair Ramp                               |
| —     | S.F.      | 4" Walk  |
| —     | C.Y.      | Excavation                                       |
| —     | C.Y.      | Compacted Fill                                   |
| —     | Lbs.      | Reinforcing Steel                                |
| 178.0 | S.Y.      | Manipulation                                     |
| —     | Tons      | Lime or Cement                                   |
| 83.5  | S.Y. V.G. | 5" Concrete & 2" Asphaltic Concrete Base         |

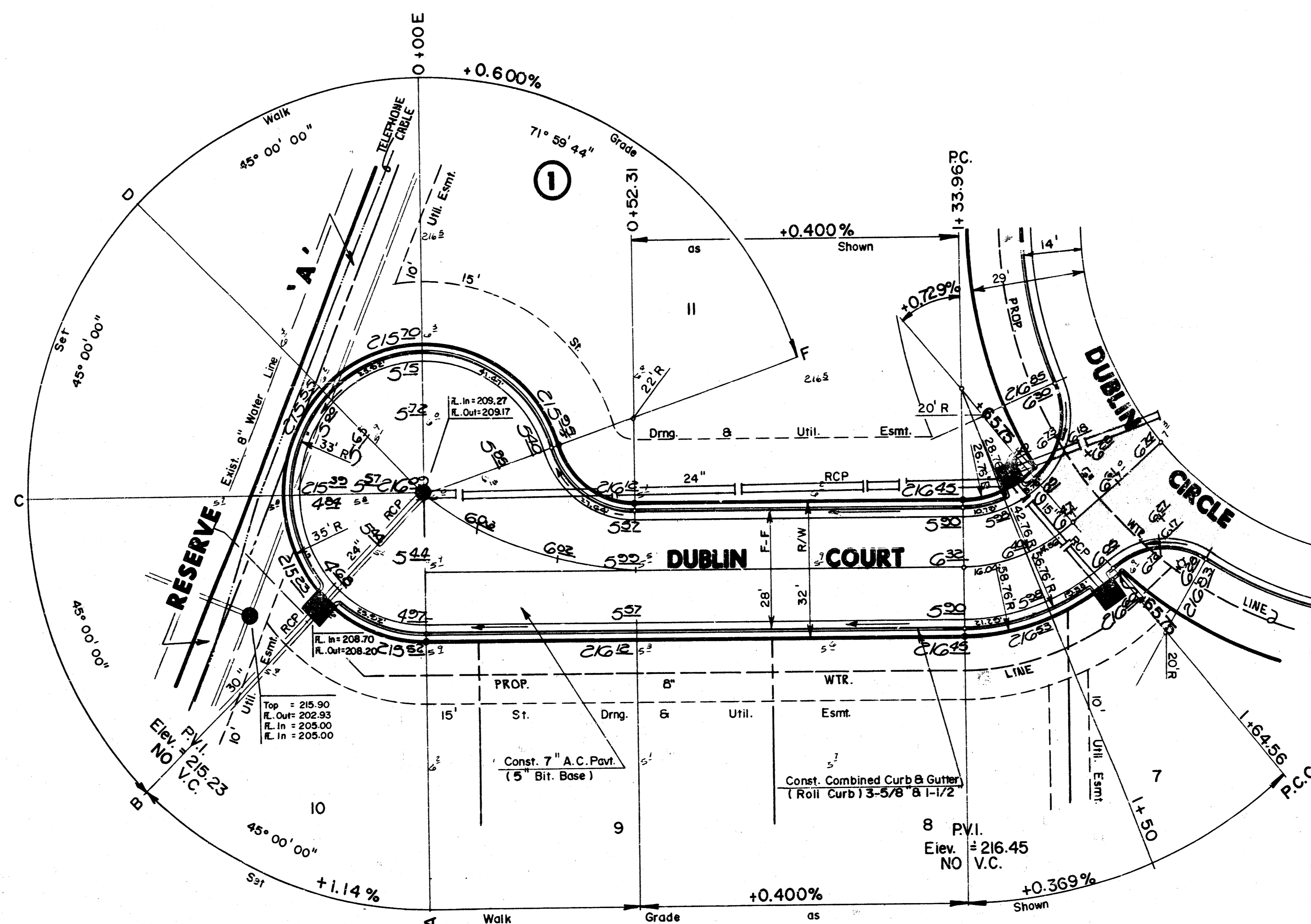
|   |   |                                      |
|---|---|--------------------------------------|
|   | CITY OF WICHITA                             | FF                                   |
|   | <b>DUBLIN COURT</b><br>LOT 17 THRU 24 BLK.1 | ECG                                  |
|   | PROJECT NO.<br>472-76-245-81623-000-000-001 | Checked by                           |
| MID-KANSAS ENGINEERING CONSULTANTS PA<br>3500 NORTH ROCK ROAD<br>BUILDING #800<br>WICHITA, KANSAS 67226 | 682-6561                                    | Sheet<br><b>6</b><br>of<br><b>13</b> |

NOTE:  
Top Of Curb Elevations Shown For  
Full Curb, Construct Combined Curb  
& Gutter (Roll Type).

PENSTEMON 4TH. ADDITION



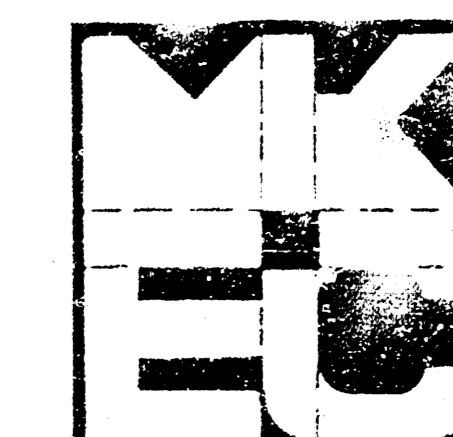
Scale : 1" = 20'



| $\Delta = 41^{\circ}00'00''$ $R = 42.76'$ $T = 15.99'$ $L = 30.60'$ $LC = 29.95'$ |        |              |             |            |                          |
|---|--------|--------------|-------------|------------|--------------------------|
| CURVE DATA BASED ON Centerline $\Delta/2 = 20^{\circ}30'00''$                     |        |              |             |            |                          |
| STATION   | ARC    | CHORD LENGTH |             | DEFLECTION | TOTAL DEFLECTION         |
|   |        | 8" OFF RCDB  | 8" OFF RCDB |            |                          |
| 1+33.96   | -      | -            | -           | -          | 0°00'00"                 |
| 1+50.00   | 16.04' | 7.74'        | 24.15'      | 10°44'45"  | 10°44'45"                |
| 1+64.56   | 14.56' | 7.03'        | 21.94'      | 09°45'15"  | 20°30'00"                |
|   |        |              |             |            | Def./Ft. = 40.19816 Min. |

DUBLIN CIRCLE & DUBLIN COURT (LOTS 7-11, BLOCK 1)  
INTERSECTION QUANTITIES

- S.Y. Concrete Pavement
- 127.0 S.Y. 7" Asphaltic Conc. Pavement (5" Bituminous Base)
- 14.9 S.Y. 2 1/2" Bituminous Base
- 50.3 L.F. Combined Curb & Gutter (6-5/8")
- L.F. Integral Curb
- S.F. 4" Wheelchair Ramp
- S.F. 4" Walk
- C.Y. Excavation
- C.Y. Compacted Fill
- Lbs. Reinforcing Steel
- 141.9 S.Y. Manipulation
- Tons Lime or Cement
- S.Y. V.G. Concrete & Asphaltic Concrete Base

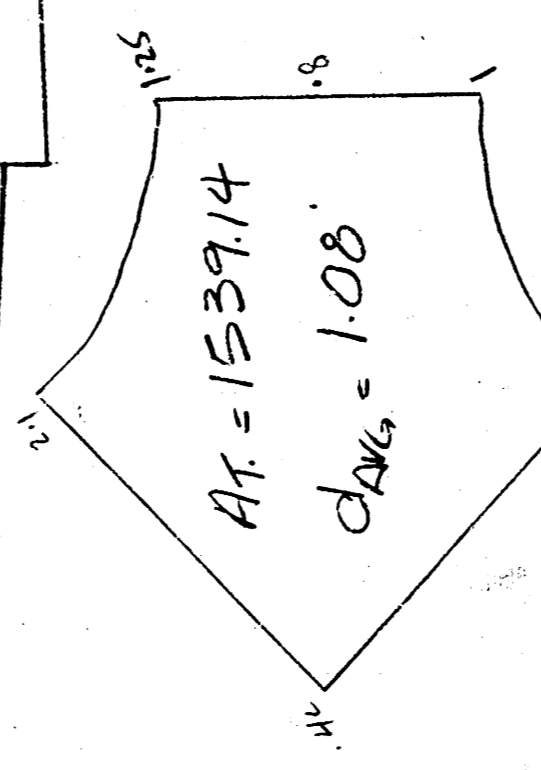
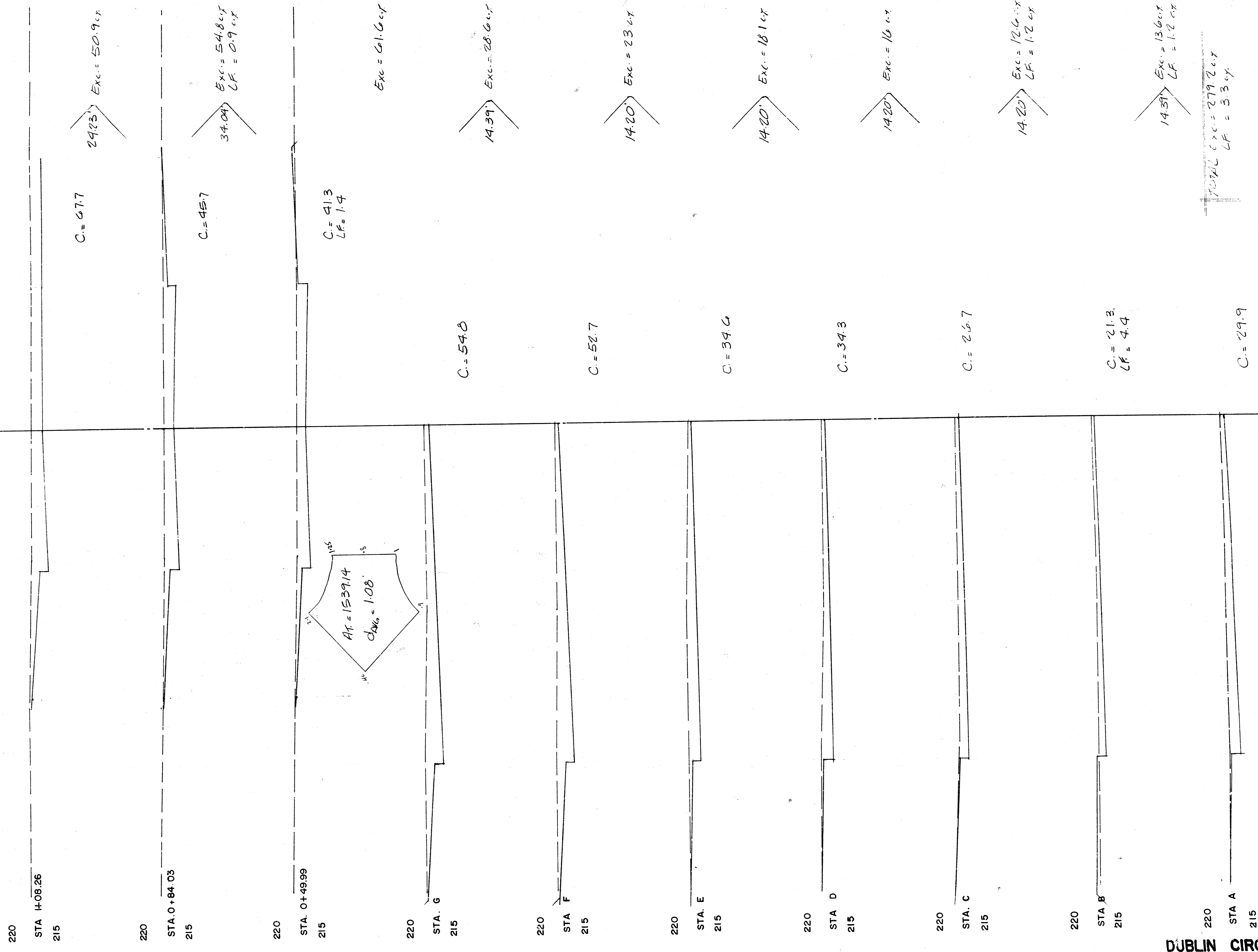


CITY OF WICHITA  
**DUBLIN COURT**  
LOT 7 THRU 11 BLK. 1  
PROJECT NO.  
472-76-245-81623-000-000-001

MID-KANSAS ENGINEERING CONSULTANTS PA  
3500 NORTH ROCK ROAD  
BUILDING #600  
WICHITA, KANSAS 67226

Prep. by  
FF  
Checked by  
ECG  
Date  
Scale

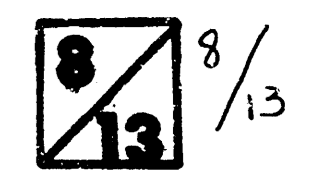
Sheet  
**7**  
of  
**13**



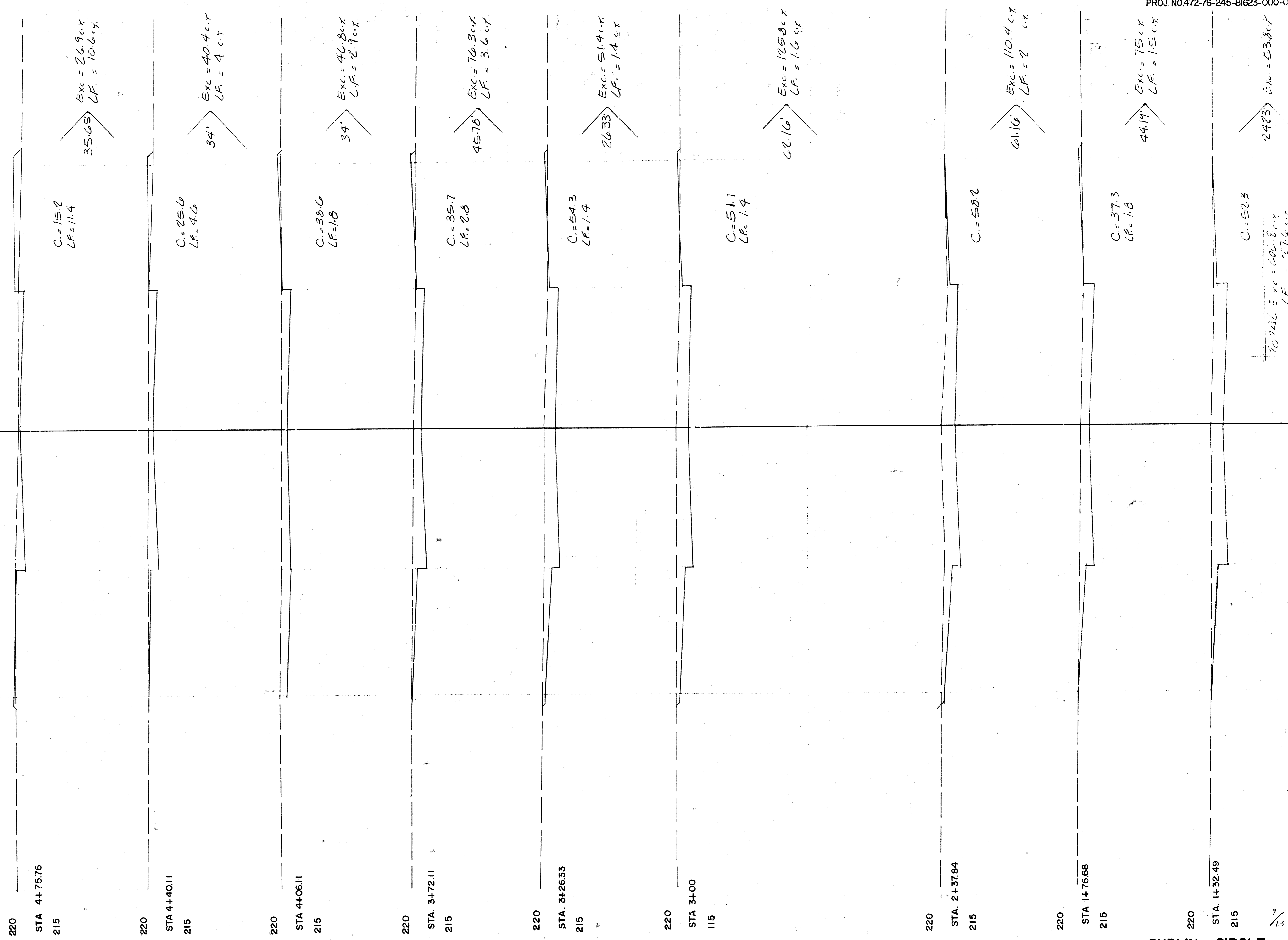
TOTAL Exc. = 279.2 cy  
 LF = 33 cy

TOTAL Paving Exc. = 1,984.5 cy  
 LF = 175.1 cy

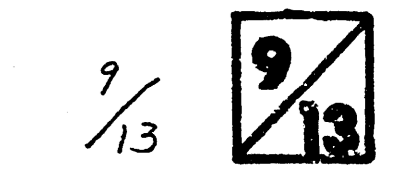
DUBLIN CIRCLE

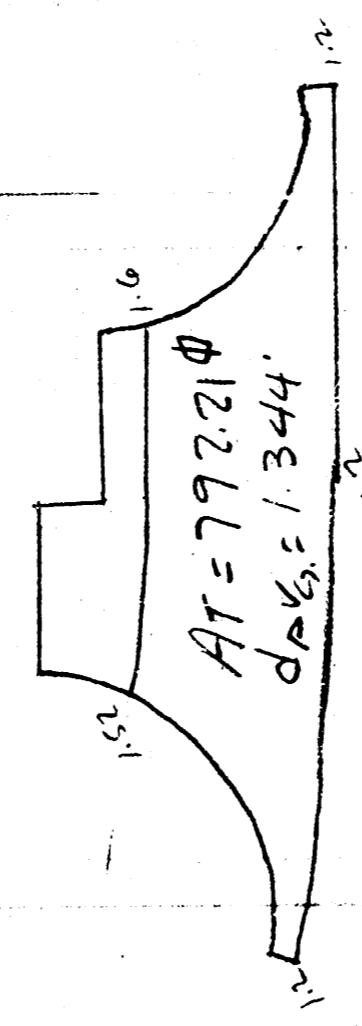


50  
45  
40  
35  
30  
25  
20  
15  
10  
5  
0  
5  
10  
15  
20  
25  
30  
35  
40  
45  
50



DUBLIN CIRCLE





Exc. = 39.4 c.y.

225

STA. 7+01.17

220

C = 32.6  
 LF = 7.7

51.17' Exc. = 42.4 c.y.  
 LF = 19.2 c.y.

225

STA 6+50

220

C = 12.1  
 LF = 12.4

58.61' Exc. = 19.3 c.y.  
 LF = 35.7 c.y.

225

STA 5+91.39

220

C = 5.7  
 LF = 20.3

36.61' Exc. = 10.1 c.y.  
 LF = 28.2 c.y.

220

STA. 5+50

215

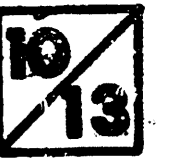
C = 12.1  
 LF = 13.5

74.24' Exc. = 37.5 c.y.  
 LF = 41.1 c.y.

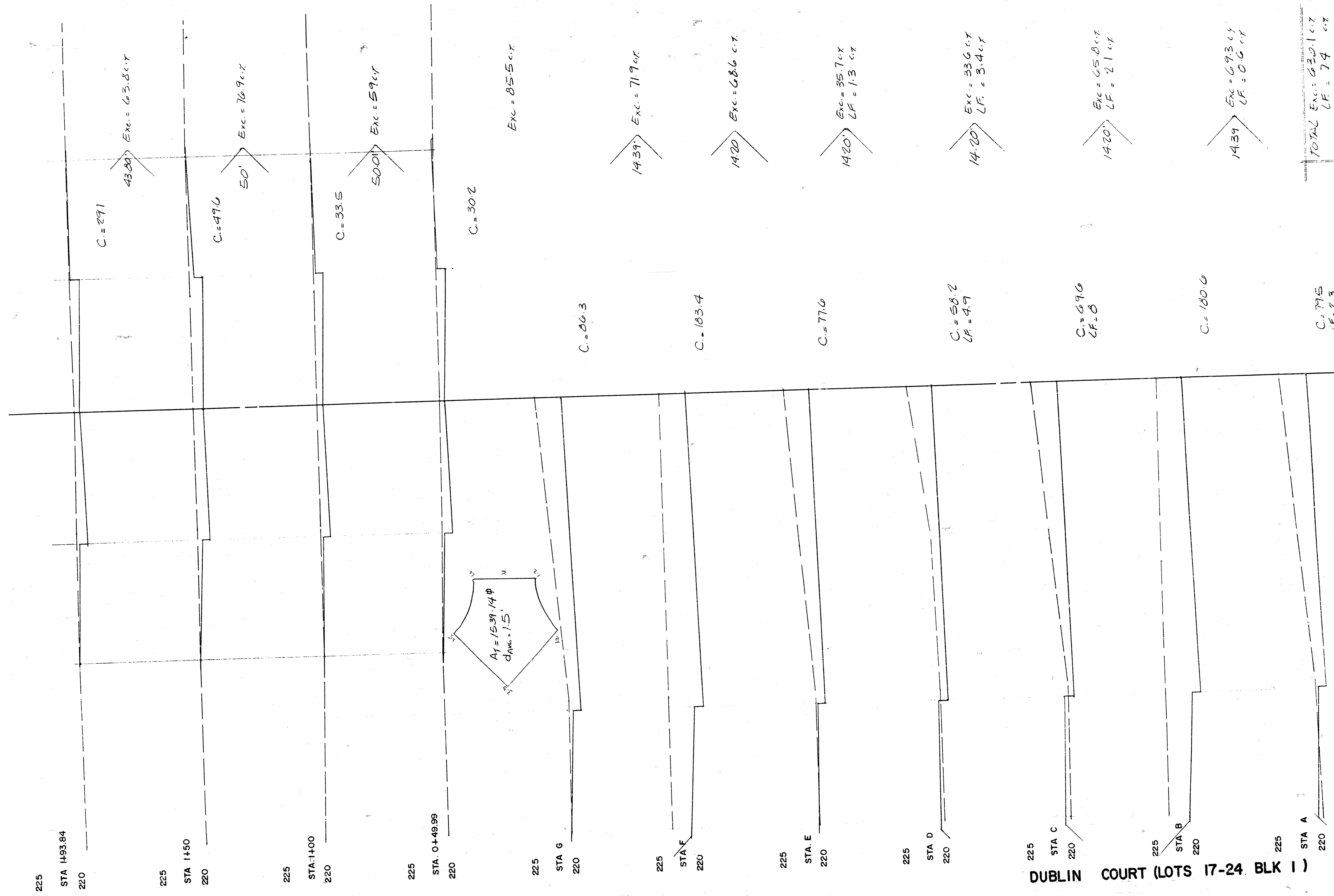
TOTAL Exc. = 143.7 c.y.  
 LF = 118 c.y.

DUBLIN CIRCLE

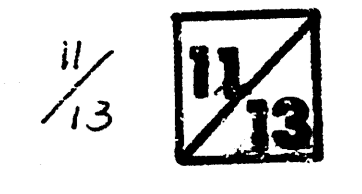
10/13



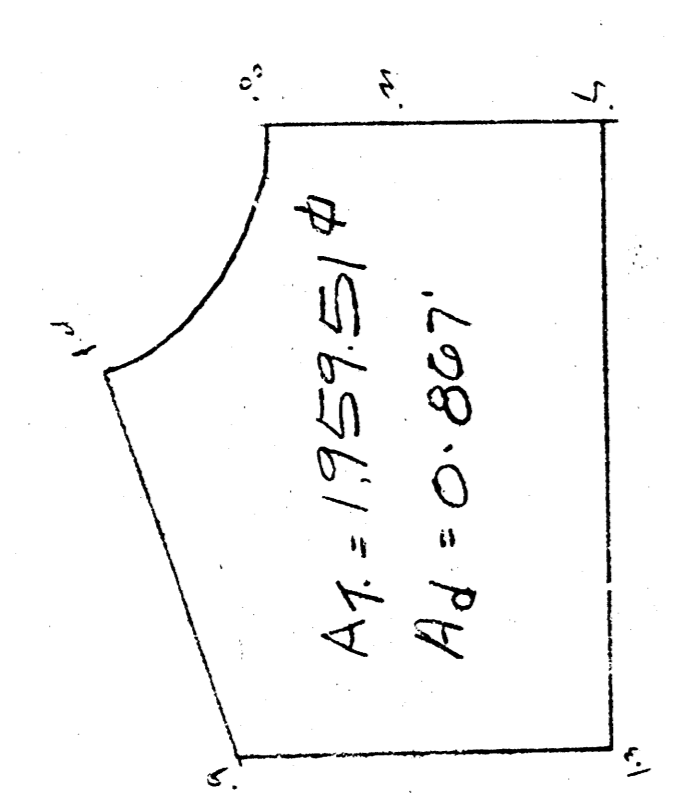
50 45 40 35 30 25 20 15 10 5 0 5 10 15 20 25 30 35 40 45 50



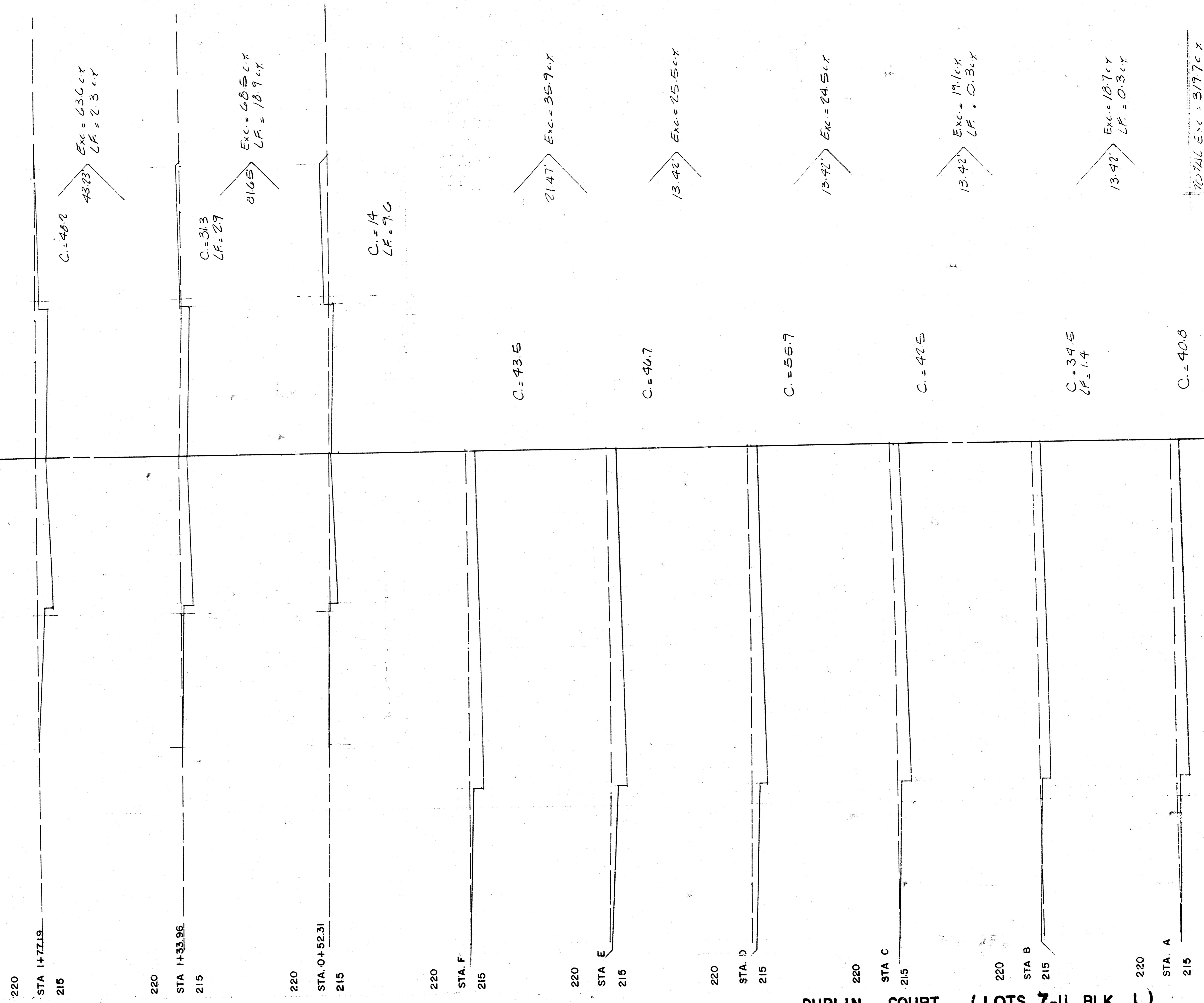
DUBLIN COURT (LOTS 17-24, BLK 1)



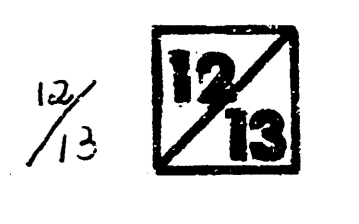
50  
45  
40  
35  
30  
25  
20  
15  
10  
5  
0  
5  
10  
15  
20  
25  
30  
35  
40  
45  
50



Exc = 63.9 cy



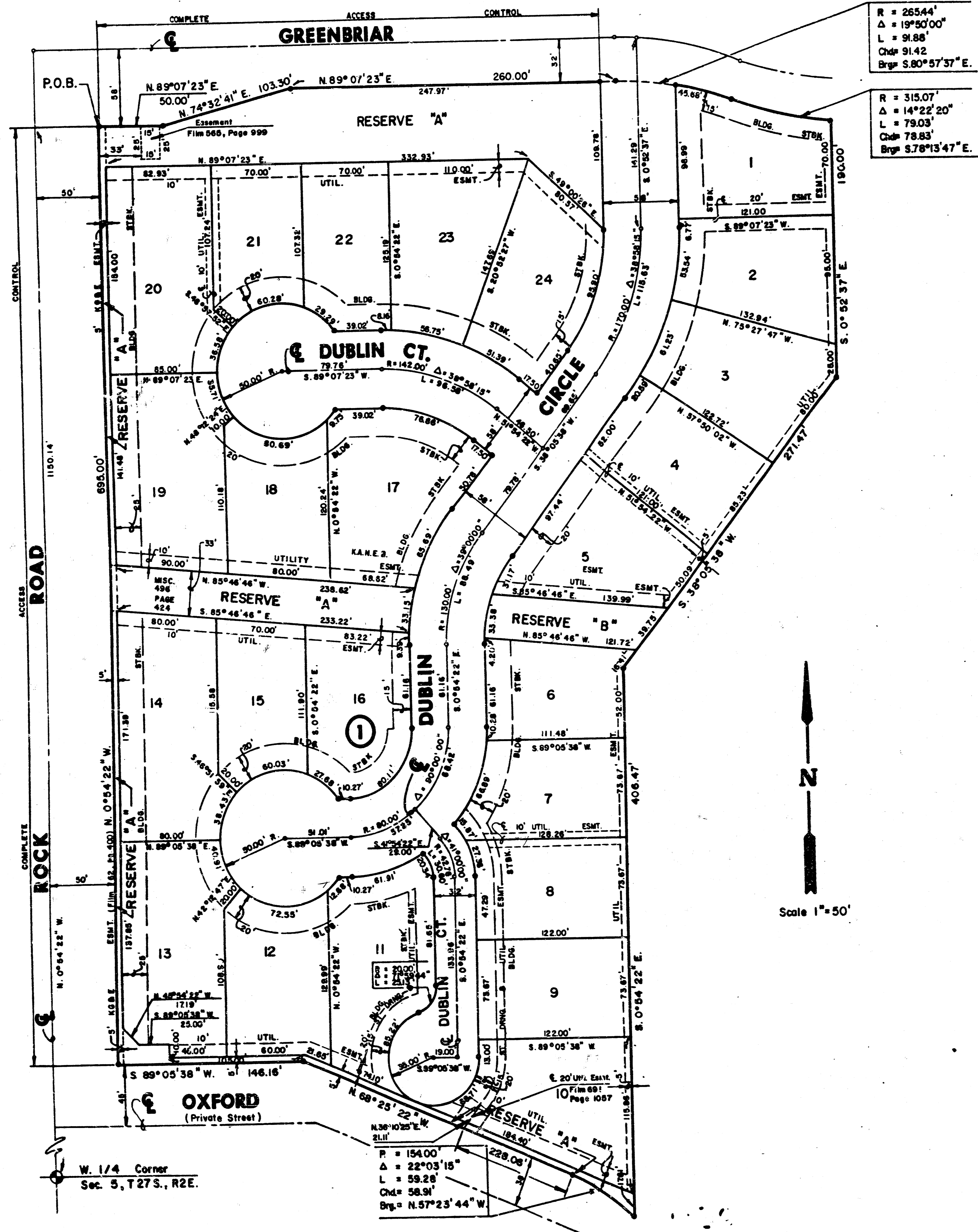
DUBLIN COURT (LOTS 7-II BLK. I)



50  
45  
40  
35  
30  
25  
20  
15  
10  
5  
0  
5  
10  
15  
20  
25  
30  
35  
40  
45  
50

# FINAL PLAT OF PENSTEMON 4TH. ADDITION

AN ADDITION TO WICHITA, SEDGWICK COUNTY, KANSAS



I, Kenneth H. Bengtson, a Civil Engineer in Kansas, do hereby certify that I have been in responsible charge of surveying and platting of "PENSTEMON 4TH ADDITION" an addition to Wichita, Sedgwick County, Kansas, into lots, a Block, Reserves, and Streets, the same being accurately set forth in the accompanying plat and described herein:

A tract of land lying in the Northwest Quarter, Section 5, Township 27 South, Range 2 East from the 6th P.M., more particularly described as follows:

A replat of part of Lot 1, Block 1, Silverleaf, an addition to Wichita, Sedgwick County, Kansas, more particularly described as follows:

Beginning at the Northwest corner of said Lot 1; thence Easterly along the South line of Greenbriar bearing N 89° 07' 23" E, 50.00 feet; thence N 74° 32' 41" E, 103.30 feet; thence N 89° 07' 23" E, 260.00 feet to a point on a curve to the right having a radius of 265.44 feet, a central angle of 19° 50' 00", a long chord bearing S 80° 57' 37" E, 91.42 feet; thence along said curve 91.88 feet to a point on a curve to the left having a radius of 315.07 feet, a central angle of 14° 22' 20", a long chord bearing S 78° 13' 47" E, 78.83 feet; thence along said curve 79.03 feet; thence S 00° 52' 37" E, 190.00 feet; thence S 38° 05' 38" W, 271.47 feet; thence S 00° 54' 22" E, 406.47 feet to a point on the Northern line of Reserve "A" of said addition, said point being on a curve to the left having a radius of 154.00 feet, a central angle of 22° 03' 15", a long chord bearing N 57° 23' 44" W, 58.91 feet; thence along said curve 59.28 feet; thence N 68° 25' 22" W, 228.06 feet; thence S 89° 05' 38" W, 146.16 feet to a point lying 50 feet East of the West line of said Northwest Quarter; thence N 00° 54' 22" W, 695.00 feet parallel with said West line to the point of beginning.

The lot, block, and utility easements within the above described property are being vacated and replatted by virtue of K.S.A. 12-512(b).

I hereby certify that the details of this plat are correct to the best of my knowledge and belief this 17 day of December 1986.

Kenneth H. Bengtson  
Kenneth H. Bengtson, P.E.  
Mid-Kansas Engineering Consultants, P.A.  
3500 N. Rock Road, Bldg. 800  
Wichita, KS 67226



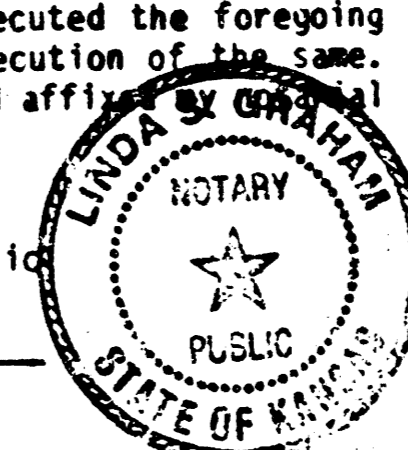
Know all men by these presents that we, the undersigned property owners of the land as set forth in the Civil Engineer's Certificate, have caused the same to be surveyed and platted into lots, a block, reserves and streets, the same to be known as "PENSTEMON 4TH ADDITION", an addition to Wichita, Sedgwick County, Kansas. Easements for the construction and maintenance of public utilities and drainage, as indicated on the accompanying plat, are hereby granted. The streets are hereby dedicated to and for the use of the public. Reserve A is platted for construction and maintenance of public utilities, and drainage except that portion of Reserve A under Misc. Book 496, page 424 used by KANEB pipeline. Reserve A and B are platted for earth berms, walks and landscaping. Reserve A is also platted for walls and entry monuments. All reserves shall be owned and maintained by the "PENSTEMON 4TH ADDITION" Homeowners Association. All abutters rights of access to or from Rock Road, over and across the West line of Reserve A are hereby granted to the City of Wichita, Kansas.

SLAWSON INVESTMENT CORPORATION  
By: Larry A. Chambers  
Larry A. Chambers, Vice President

STATE OF KANSAS ) ss:  
SEDGWICK COUNTY)

Be it remembered that on this 17th day of December, 1986, before me, a Notary Public in and for said State and County, came Slawson Investment Corporation, by Larry A. Chambers, Vice President, to me personally known to be the same person who executed the foregoing instrument of writing and duly acknowledged the execution of the same. In testimony whereof I have hereunto set my hand and affixed my official seal the day and year above written.

Linda S. Graham Notary Public  
Linda S. Graham  
My Appointment Expires: 2-9-90



This plat of "PENSTEMON 4TH ADDITION" has been submitted to and approved by the Wichita-Sedgwick County Metropolitan Area Planning Commission, Wichita, Kansas.

Dated this 17th day of December, 1986.

WICHITA-SEDGWICK COUNTY METROPOLITAN AREA PLANNING COMMISSION

John Perry Moore Chairman  
Marvin S. Kroot Secretary  
MARVIN S. KROOT



This plat approved and all dedications shown hereon accepted by the City Commission of the City of Wichita, this 27th day of JAN, 1987.

Tony Casado Mayor  
Dale C. Paul City Clerk  
DALE C. PAUL

Entered on transfer record this 25 day of Feb, 1987.

Don Wright County Clerk  
DON WRIGHT

STATE OF KANSAS ) ss:  
SEDGWICK COUNTY)

This is to certify that this instrument was filed in the Register of Deeds office this 23rd day of Feb, 1987. At 2:50 PM

Pat Kettler Register of Deeds  
PAT KETTLER

Ed Resa Deputy  
ED RESA

We, Mellon Bank, N.A., Pittsburgh, Pennsylvania, mortgagee on the above described property, do hereby consent to the plat of "PENSTEMON 4TH ADDITION".

MELLON BANK, N.A., Pittsburgh, Pennsylvania  
By: Paul J. Brown  
PAUL J. BROWN

STATE OF KANSAS ) ss:  
COUNTY OF SEDGWICK)

Be it remembered that on this 24th day of December, 1986 before me, a Notary Public in and for said State and County, came Mellon Bank, N.A., Pittsburgh, Pennsylvania, by Paul J. Brown, to me personally known to be the same person who executed the foregoing instrument of writing and duly acknowledged the execution of the same. In testimony whereof I have hereunto set my hand and affixed my official seal the day and year above written.

Linda S. Graham Notary Public  
Linda S. Graham  
My appointment Expires: 2-9-90

