

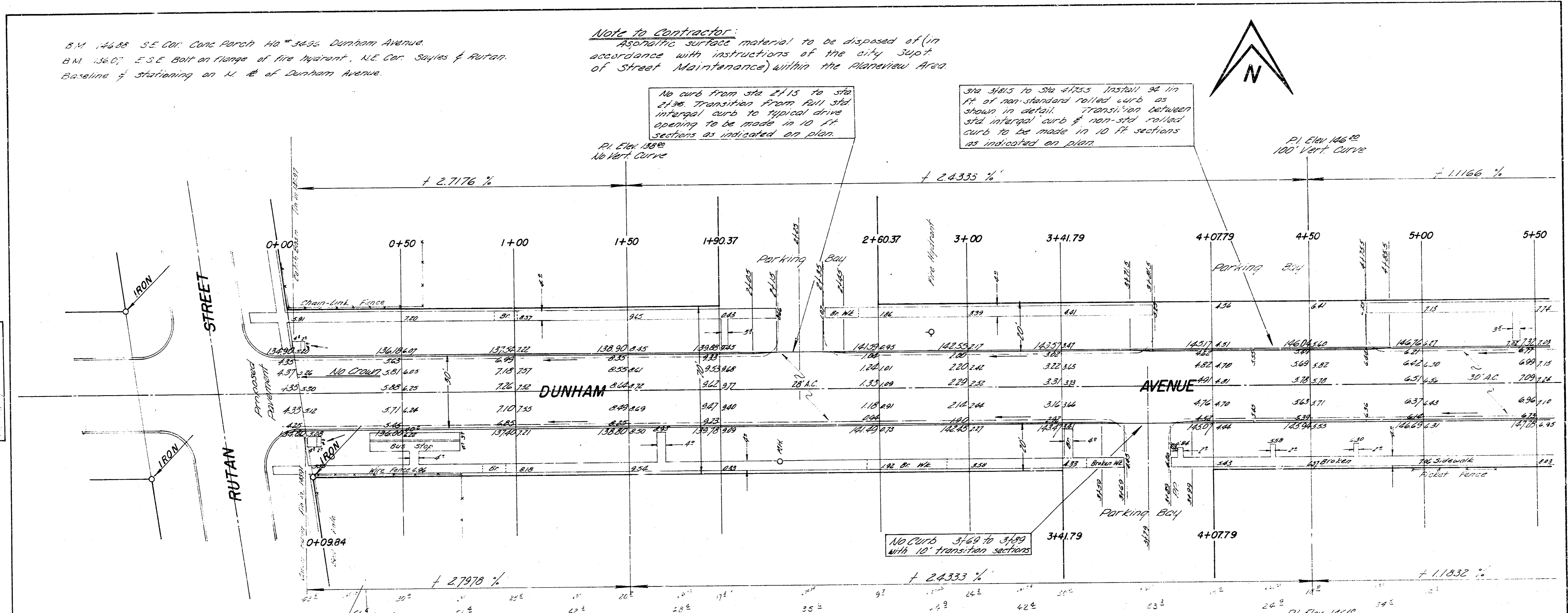
B.M. 142.88 S.E. Cor. Conc. Parch. Ho. 5436 Dunham Avenue.
 B.M. 136.07 E.S.E. Bolt on Ramp of Fire Department, N.E. Cor. Soyles & Rutan.
 Baseline of stationing on N. E. of Dunham Avenue.

Note to Contractor:
 Asphaltic surface material to be disposed of (in accordance with instructions of the city Supt. of Street Maintenance) within the Planview Area

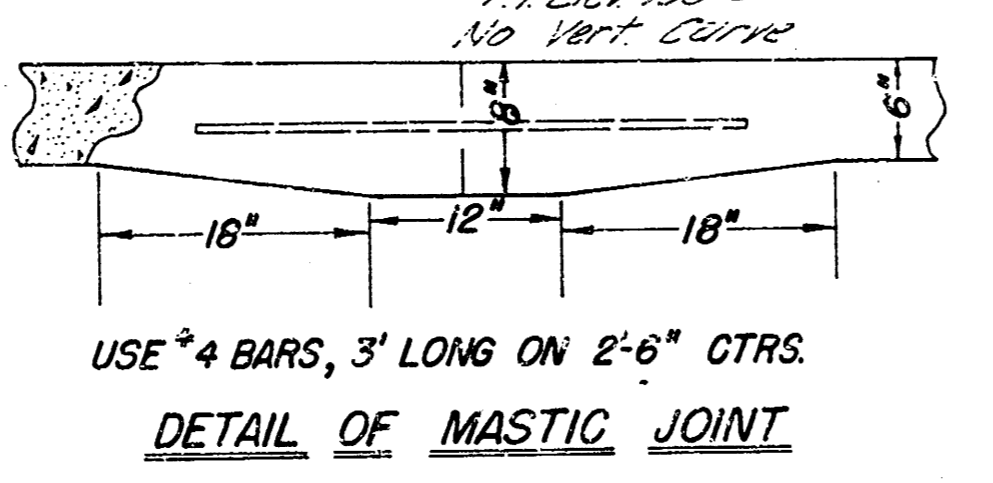
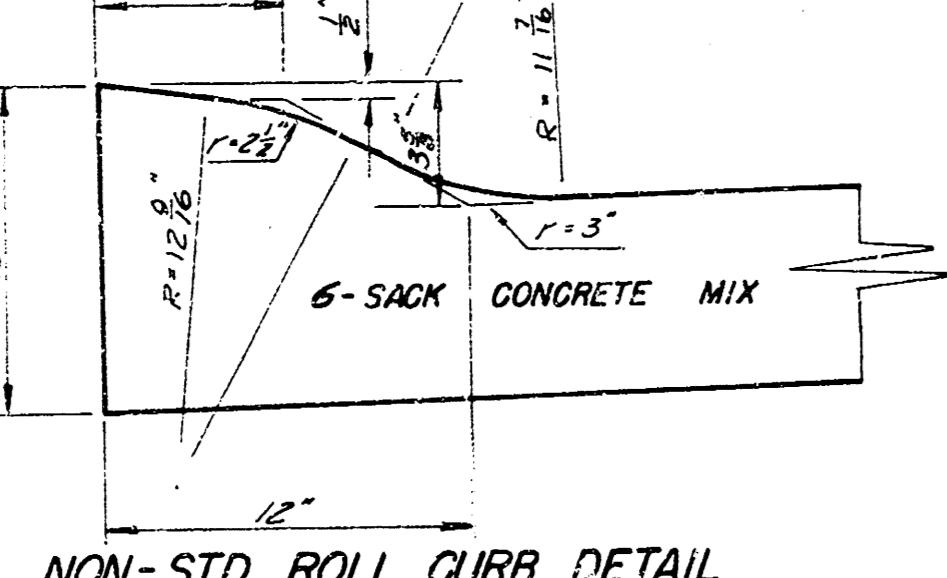


No curb from sta 2+15 to sta 2+36. Transition from full std intergal curb to typical drive opening to be made in 10 ft sections as indicated on plan.

Sta 3+15 to Sta 4+75.5 Install 36 in ft of non-standard rolled curb as shown in detail. Transition between std intergal curb & non-std rolled curb to be made in 10 ft sections as indicated on plan.



Note: Curb elevations shown on plan are for std intergal curb to set forms by non-std roll curb. Sta 3+91.5 to sta 4+75.5 will not match this elevation.

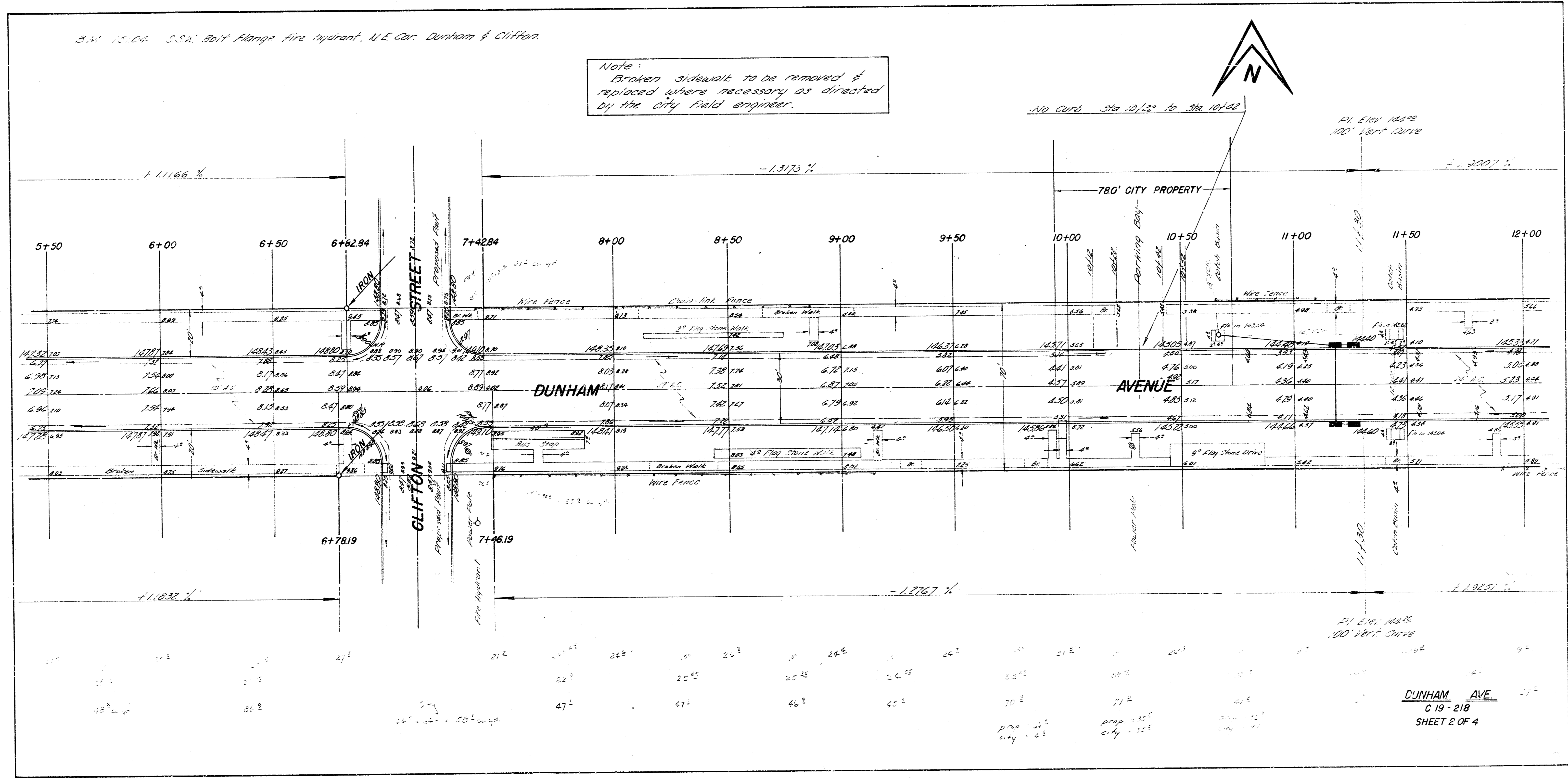


EXCAVATION		COMP. FILL	
PROP.	CITY	PROP.	CITY
175.7	432.1	0.0	0.0
175.6	65.2		
1931.3	273.3		

DUNHAM AVE
 E.L. RUTAN TO & INCL. O/L-DE-SAC
30' CONC. & CB.
 CITY OF WICHITA, KANSAS
 B.E. SMITH CITY ENGINEER
 DATE: 11/1/2010 PROJ. NO. C19-218

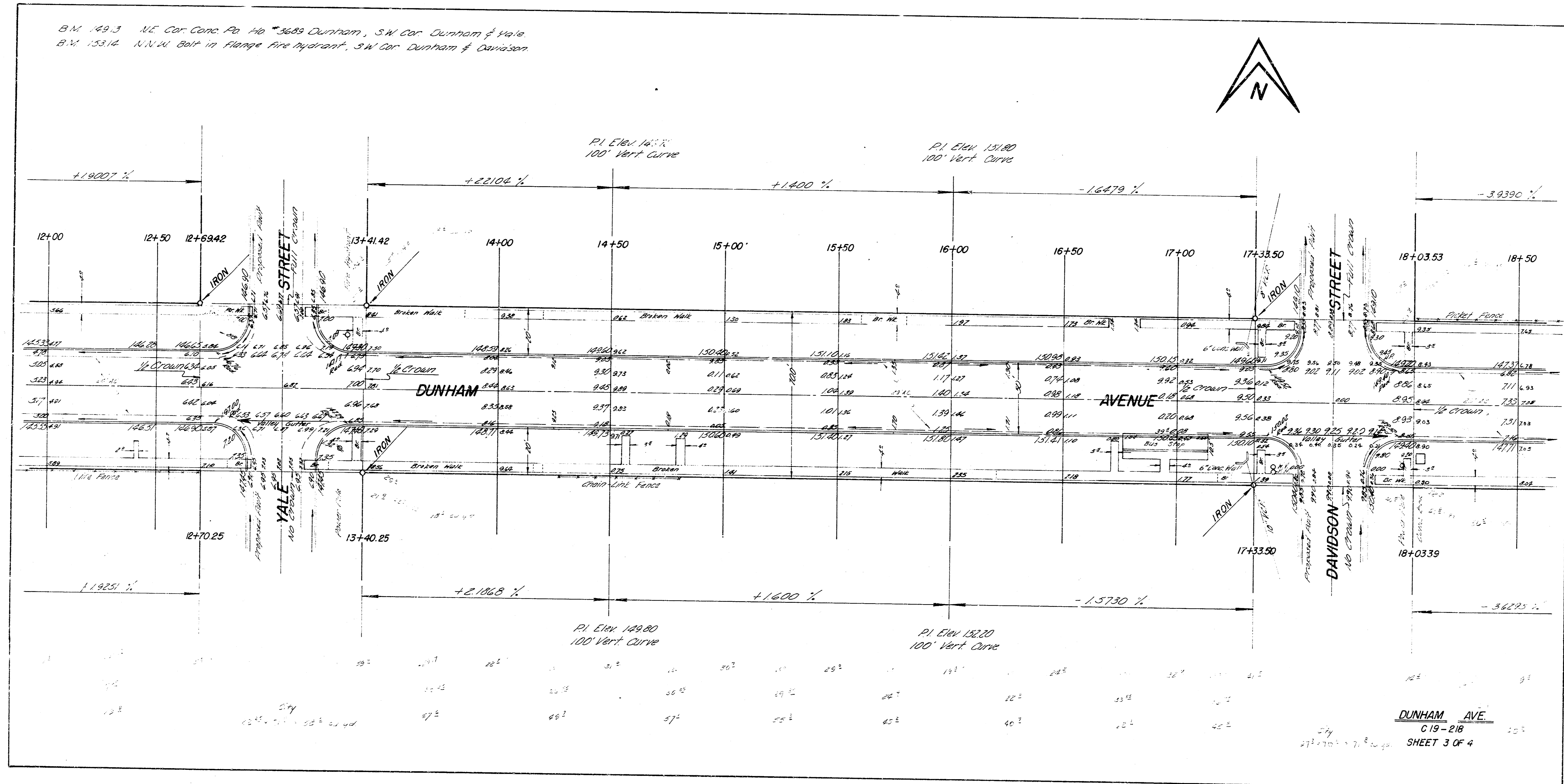
3.11.13.04 S.S.N. Bolt Flange fire hydrant, N.E. Cor. Dunham & Clifton.

Note:
Broken sidewalk to be removed &
replaced where necessary as directed
by the City Field Engineer.

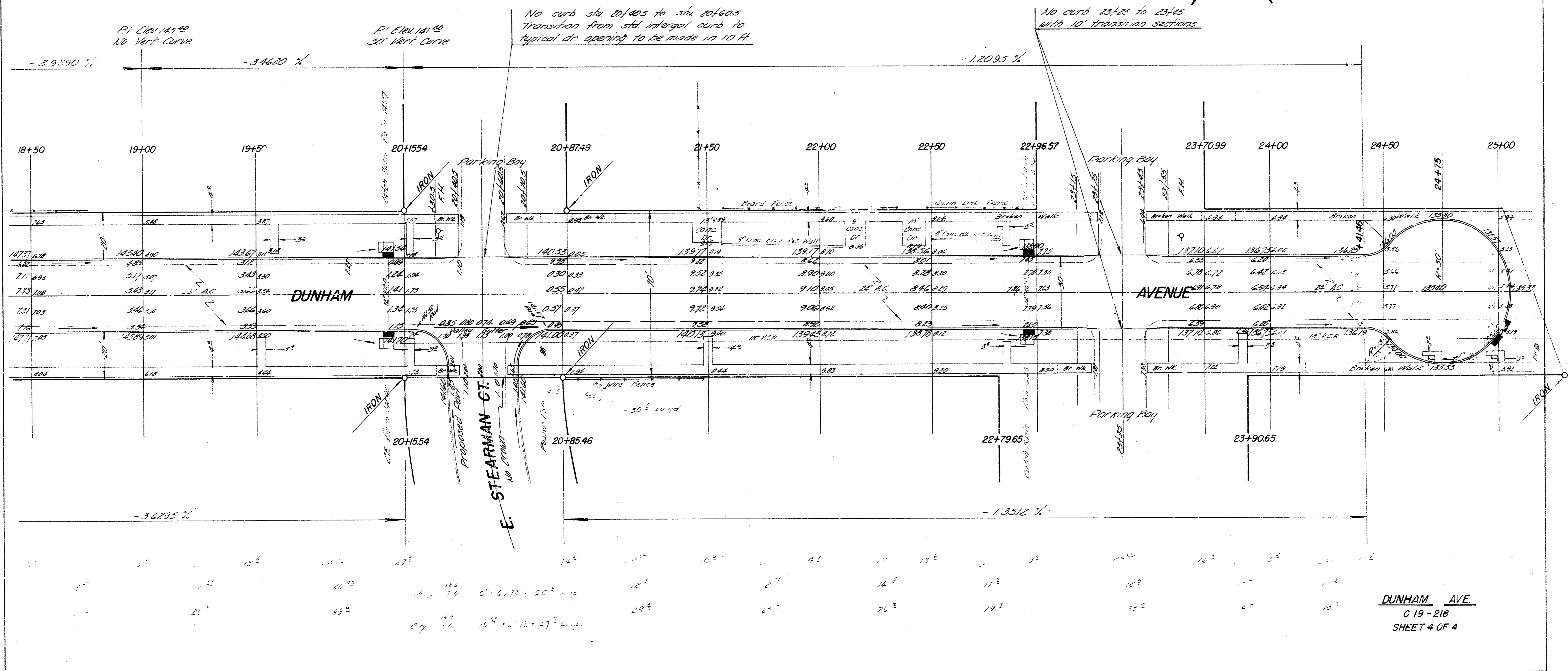


DUNHAM AVE
C 19 - 218
SHEET 2 OF 4

B.M. 149.3 NE Cor. Conc. Rd. Ho. 3689 Durham, S.W. Cor. Durham & Yale
 B.M. 153.14 N.W. W. Bolt in Flange Fire Hydrant, S.W. Cor. Durham & Davidson



B.M. 4334 S.W. Bolt on fire hydrant, N.W. Cor. Stearman & Dunham
 B.M. 4421 RR Spike ... N. face Power Poles, S. Side Dunham & Terrapike R/W.



DUNHAM AVE
 C 19-218
 SHEET 4 OF 4

