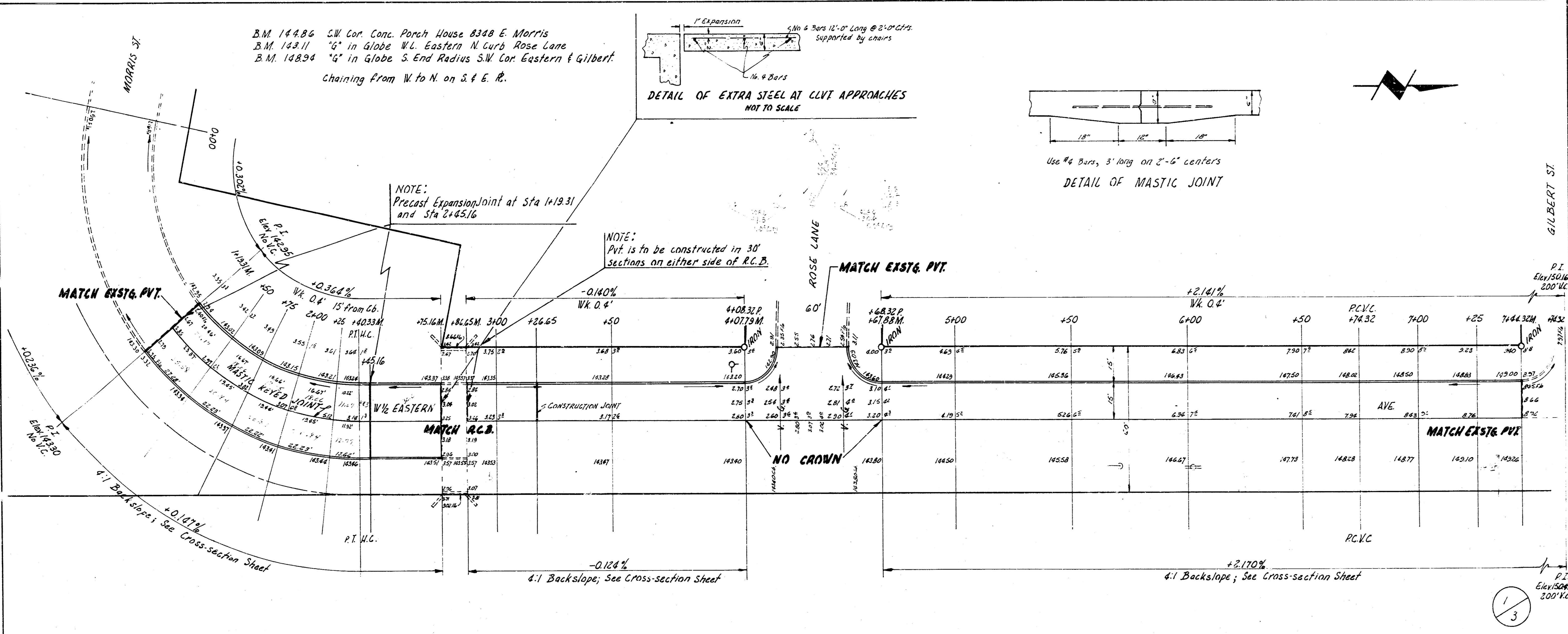
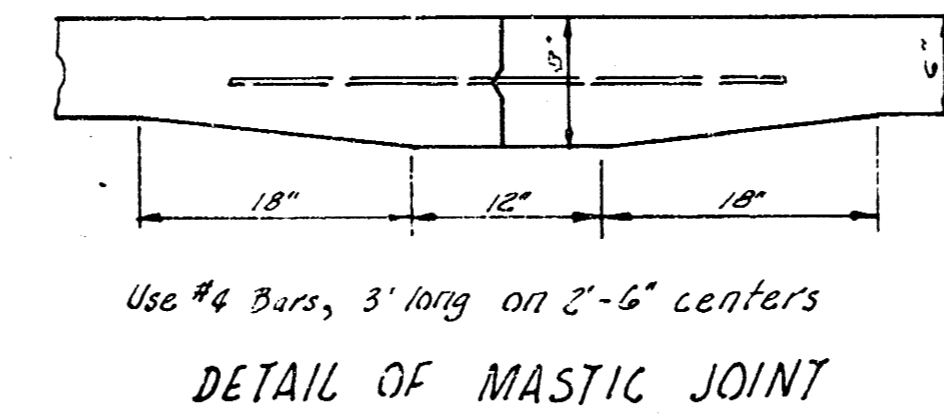
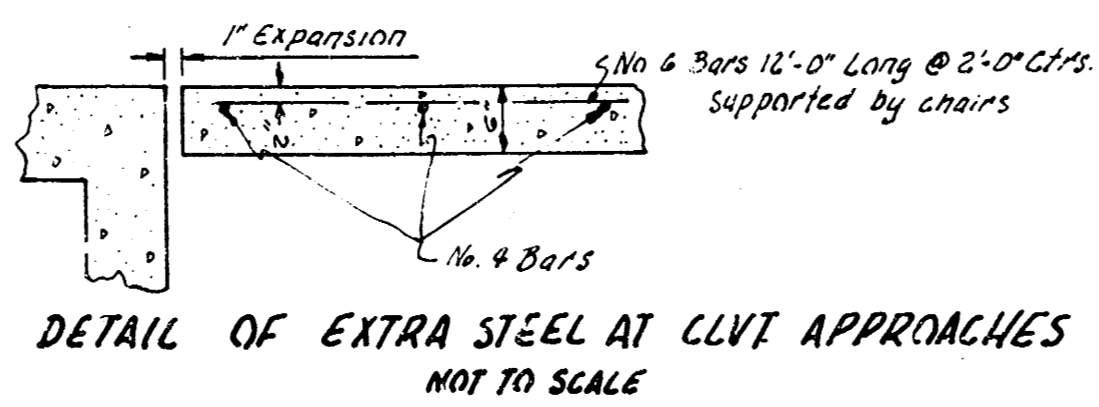


B.M. 144.86 S.W. Cor. Conc. Porch House 8348 E. Morris
 B.M. 143.11 "G" in Globe W.L. Eastern N. Curb Rose Lane
 B.M. 148.94 "G" in Globe S. End Radius S.W. Cor. Eastern & Gilbert
 Chaining from W. to N. on S. & E. R.



CURVE DATA FROM Sta. 1+19.31 TO Sta. 2+03.33
 Sta. on L. of 30' E. of E. R. 1/35', D. = 51° 21' 44"

Sta.	Chord Length on 1/35' Slope	Chord Length on 1/15' Slope	Deflection Angle	Total Angle
1+19.31	13.05	26.58	2° 30' 44"	2° 30' 44"
+25	15.53	33.00	5° 18' 18"	11° 49' 04"
2+00	15.54	33.30	5° 18' 18"	17° 07' 22"
+25	15.53	33.30	5° 18' 18"	22° 25' 40"
+20.33	5.53	14.30	3° 15' 11"	25° 40' 52"

NOTE TO FIELD ENGINEER & CONTRACTOR
 Loose fill between Sta 2+00 & Sta 3+50 to be excavated to original ground level & replaced with fill sand. Recross-section after excav so amt. of fill sand used can be determined.



W 1/2 EASTERN AVE.
 S.L. MORRIS - S.L. GILBERT
 15' CONC. & C.B.
 CITY OF WICHITA, KANS.
 B.E. SMITH CITY ENGINEER
 MARCH 1952 PROJ. C14-376

1/3
 Elev. 5000
 200' VC