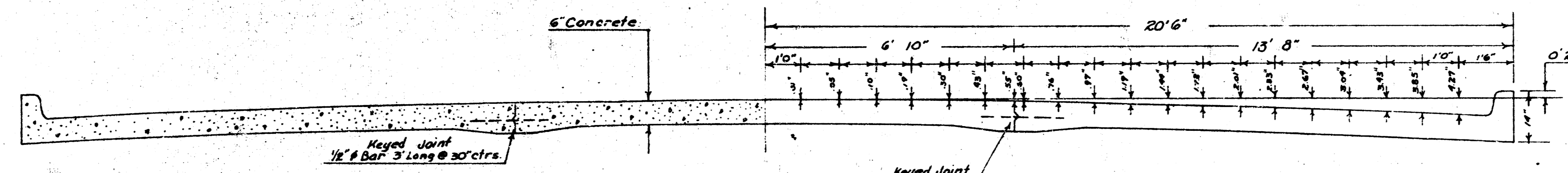
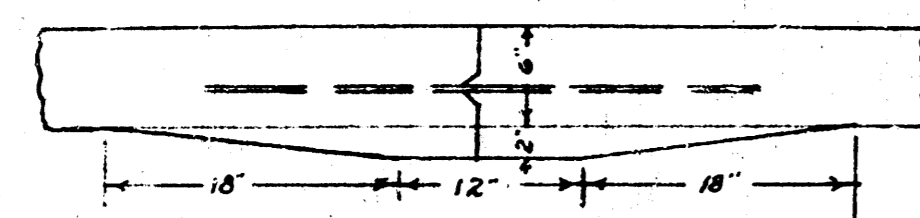


EDGEMOOR DR.
S. L. MT. VERNON TO N. L. KINKAID

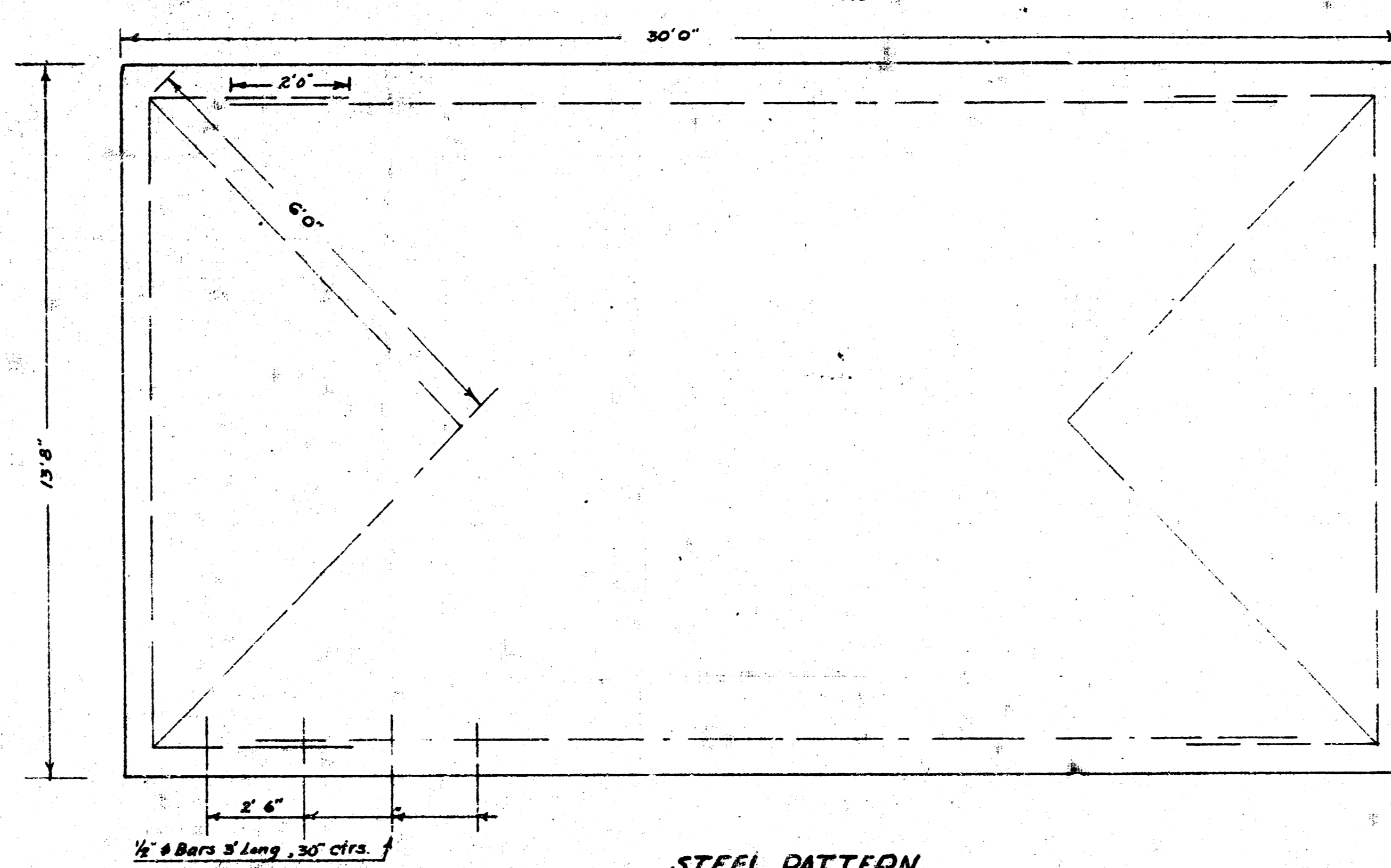


TYPICAL SECTION
No Scale

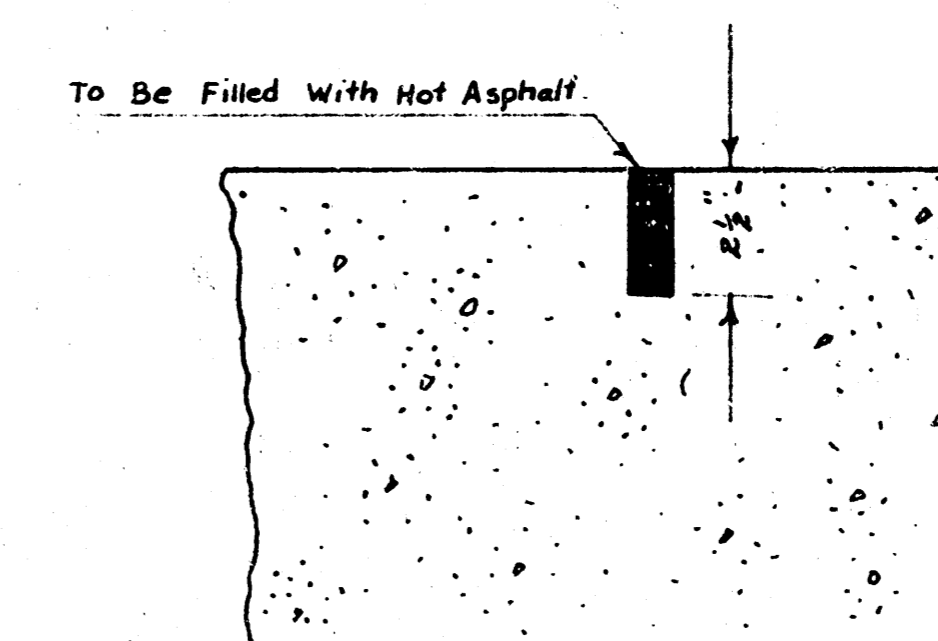


Detail of Keyed Joint

No Scale



STEEL PATTERN
No Scale



Detail of Contraction Joints
No Scale

CHM-76

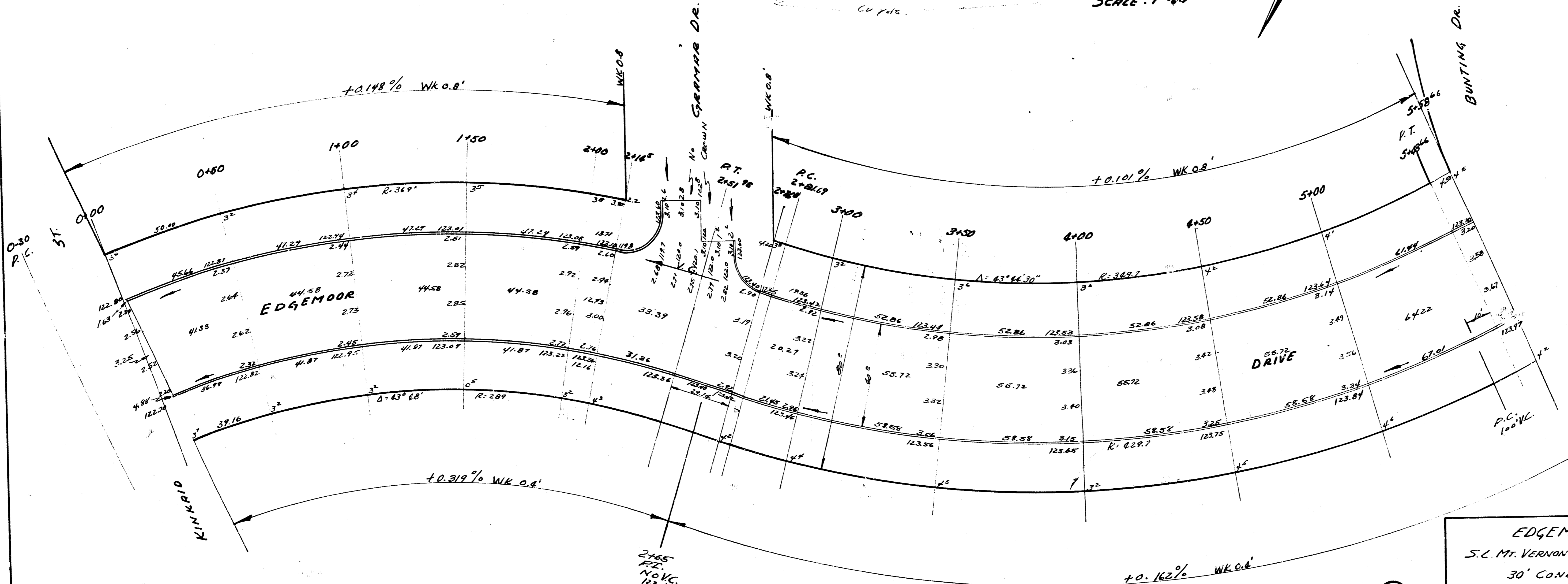
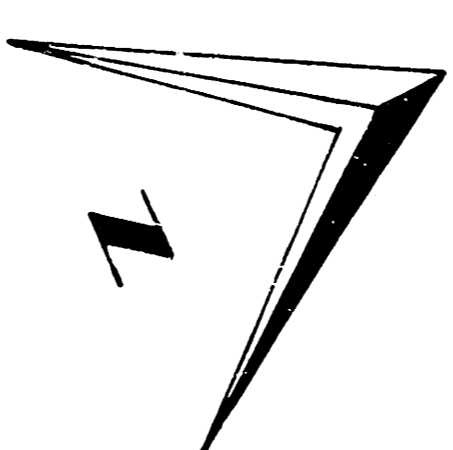
NOTE: STATIONING ON W.P.

B.M. 125.86 R. SPINA W. 58' WALNUT W.L. EDGEMOOR S.L. GEMAR
 I.M. 125.74 IN R.T. W.E. E. CO. EDGEMOOR I.M. VERNON
 B.M. STA. N.W. EDGEMOOR I.M. VERNON 137.537

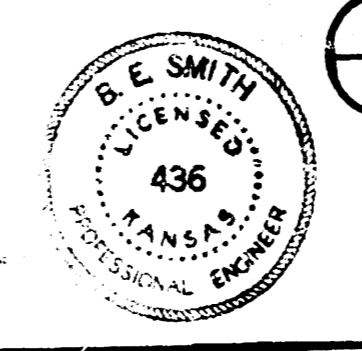
TOTAL EARTHWORK

| CITY | C12-33 | | C12-34 | |
|-------|--------|--------|--------|-------|
| | FILL | CUT | FILL | CUT |
| 248.1 | 77.6 | 3456.4 | 228.8 | 714.8 |
| 28.2 | 7.5 | 345.6 | 22.4 | 91.5 |
| 311.4 | 85.1 | 3802.0 | 251.2 | 826.3 |

SCALE: 1"=20'



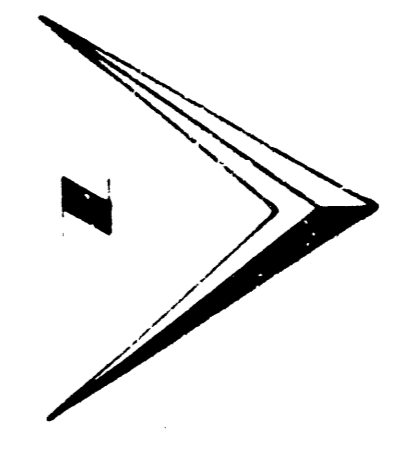
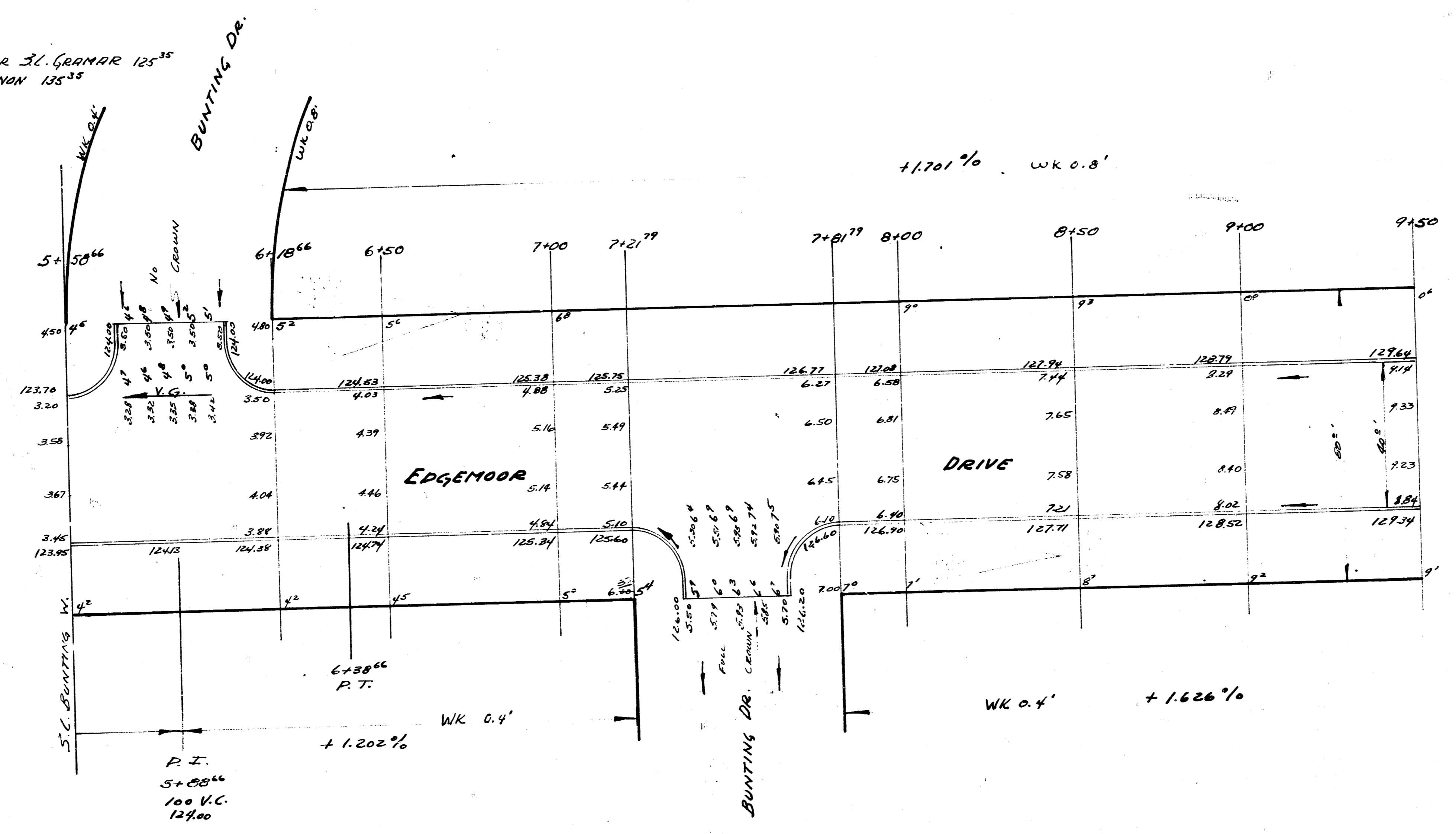
EDGEMOOR
 S.L. MT. VERNON TO N.L. KINKRID
 30' CONC. & CB.
 WIDEN TO 40' CONC.
 CITY OF WICHITA, KANSAS
 L.K. WHITE CITY ENGINEER
 JUNE 1952 Prod. No. C12-33
 C12-34



3/3

B.M. R.R. SPIKE W. S. 8" WALNUT W.L. EDGEWOOD 31. GRAMAR 125³⁵
 B.M. "H" IN RITCHIE E.C.B. EDGE MOOR 8 MT. VEENAN 135³⁵

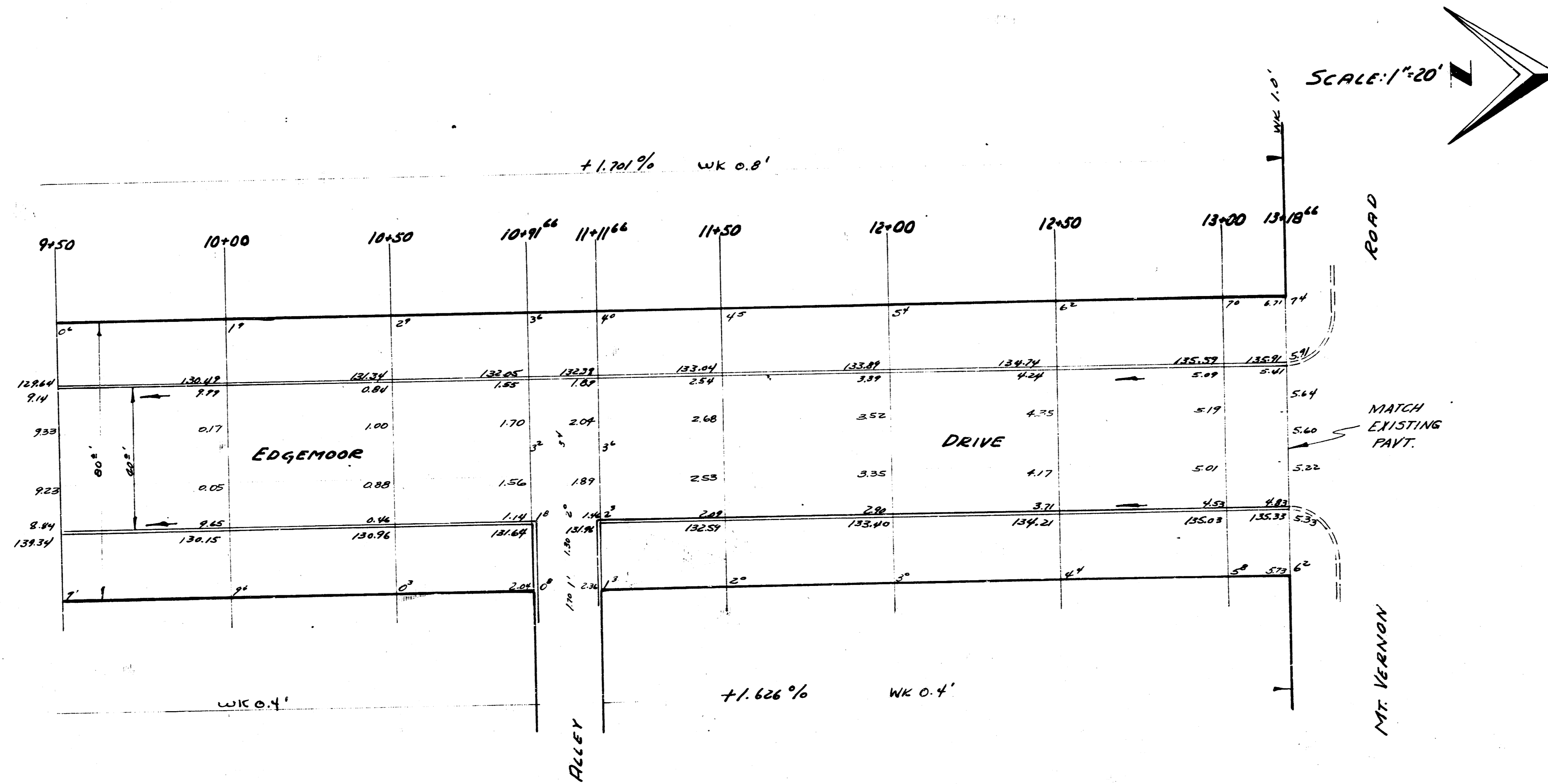
SCALE: 1"=20'

NOTE: STATIONING ON W.E.

2
3

B.M. - 121.531 - STD. NW. EDGEWOOD & MT. VERNON



SCALE: 1"=20'

NOTE: STATIONING ON W.R.

