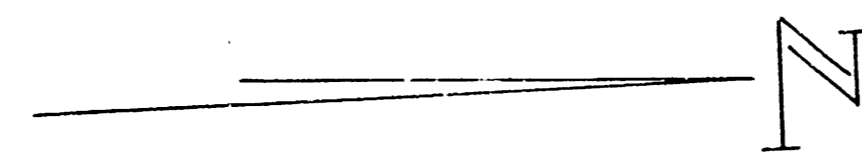
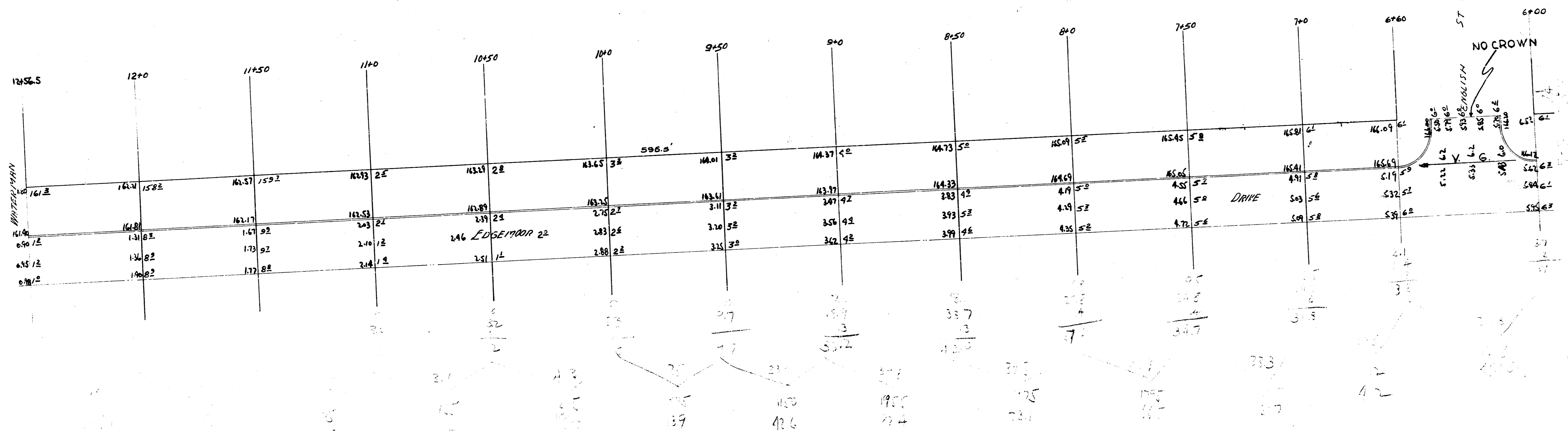


B.M. "G" in Globe, W. of Edgemore of H.L. Douglas. 173.18



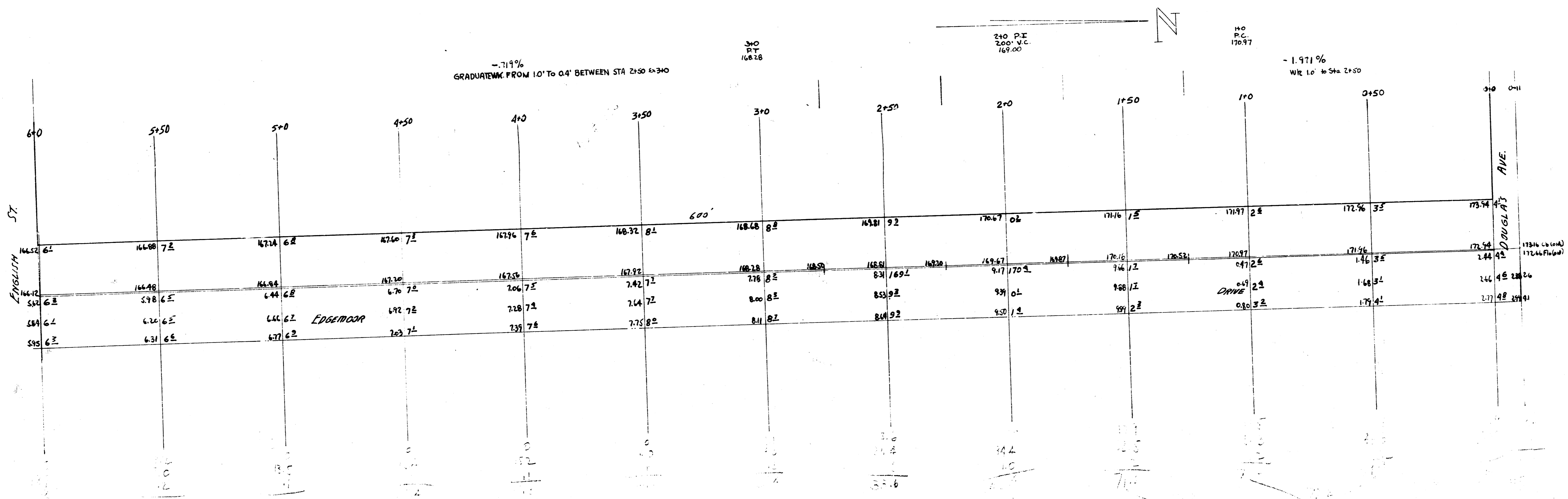
-7.19%  
Wk 9.4



W. HALL - EDGEMORE  
ST. DOUGLAS to DRIVE  
N. WATERMAN  
20' CONC. & CURB  
CITY of WICHITA KANSAS  
ENGINEERING DIVISION  
L.K. WHITE CITY ENGINEER  
JULY 1947

X-section  
Done 4/27

B.M. 173 1/2 6" in Globe w. ch. Edgemoor / N.L. Douglas.



EDGEWOOD W 1/2 DRIVE  
 S.L. DOUGLAS TO N.L. WATERMAN  
 20' CONCRETE CURB  
 CITY OF WICHITA KANSAS  
 ENGINEERING DIVISION  
 L.H. WHITE CITY ENGINEER  
 JULY 1947