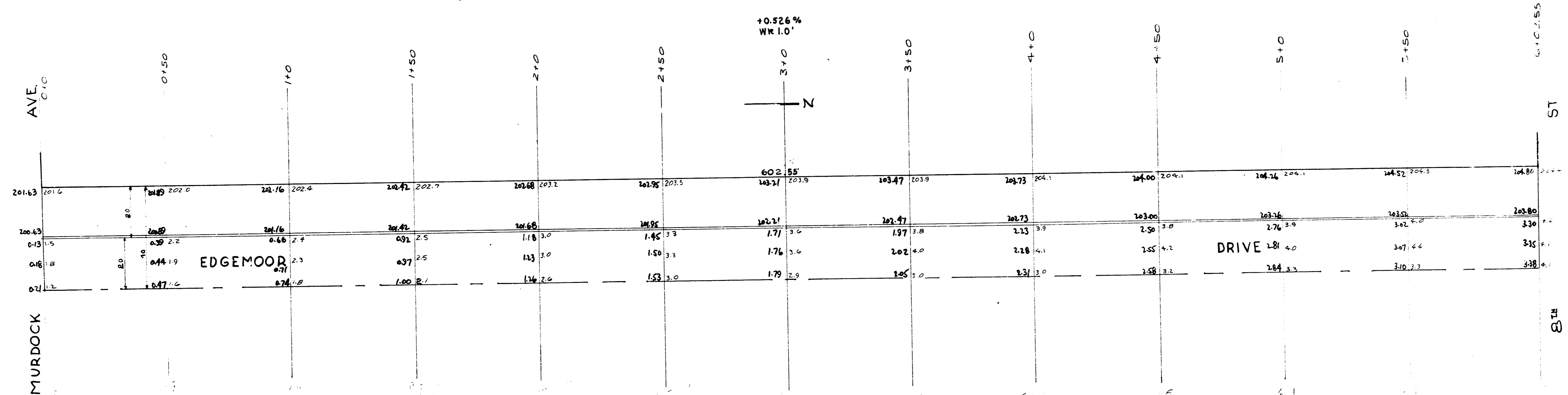
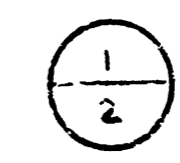


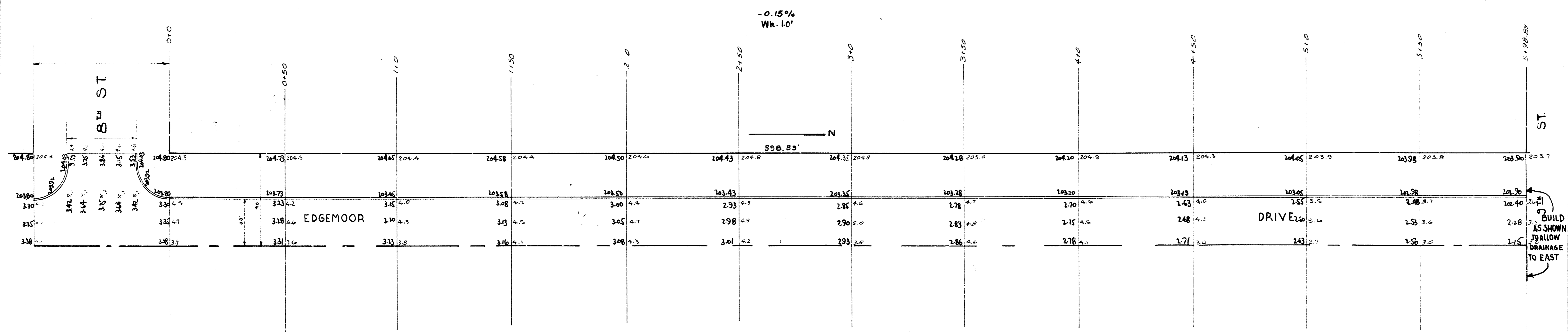
B.M. 20065 "G" in Globe W.C. Pine S. End Rad.



EDGEMOOR DRIVE W 1/2  
N.L. MURDOCK to S.L. 9th  
20' CONCRETE & CURB on W  
CITY of WICHITA, KANS.  
L.K. WHITE CITY ENGINEER  
DEC 1946



BM 204.3B Top Iron W.L. Edgemoor S.L. 5th  
 BM 203.62 Top Iron W.L. Edgemoor S.L. 9th



EDGEMOOR DRIVE W 1/2  
 N.L. MURDOCK TO S.L. 9th  
 20' CONCRETE & CURB ON W  
 CITY OF WICHITA, KAN  
 L.K. WHITE CITY ENGINEER  
 DEC. 1946

2/2