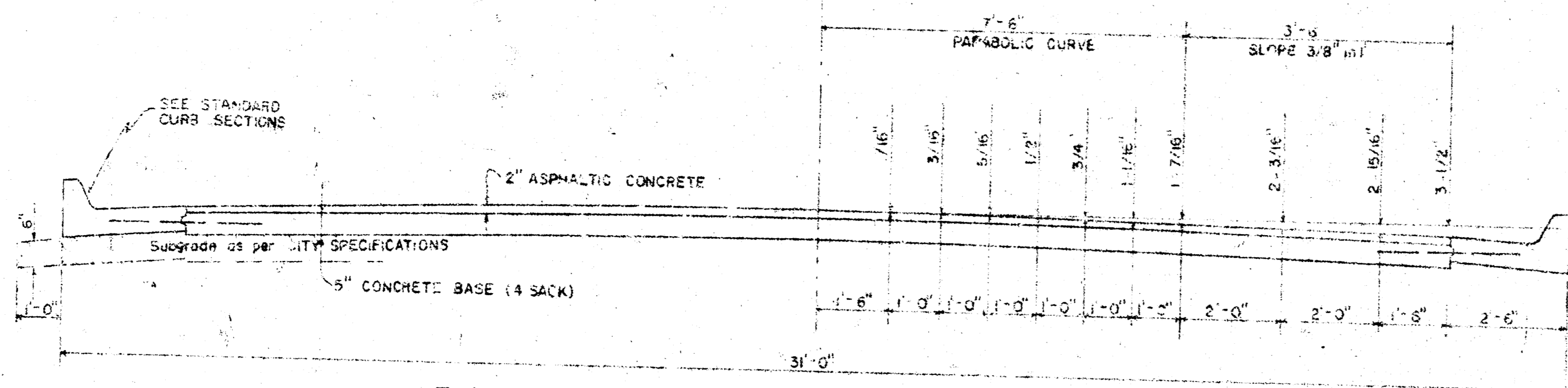
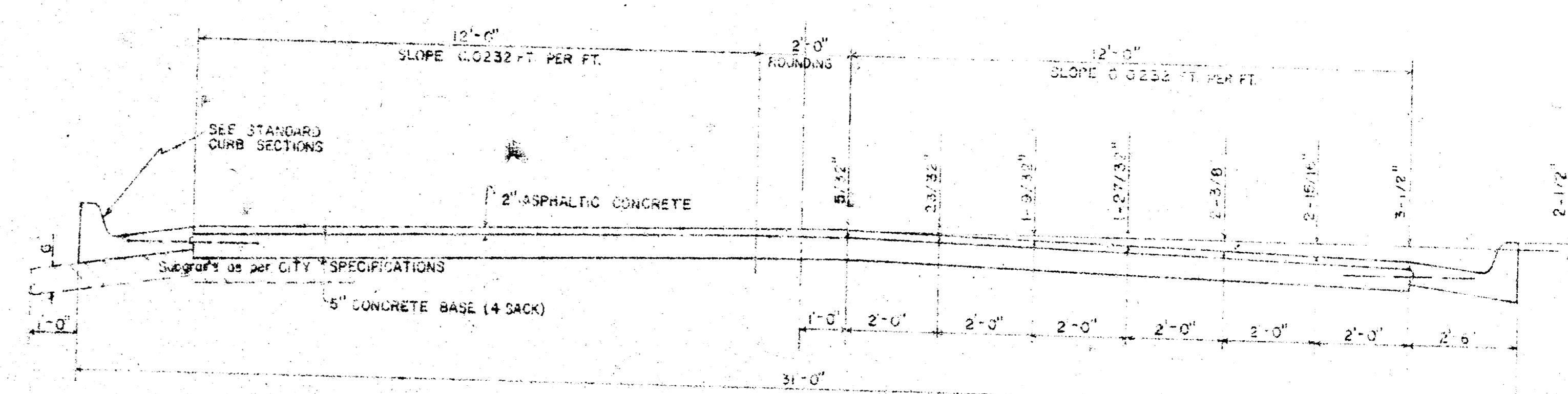


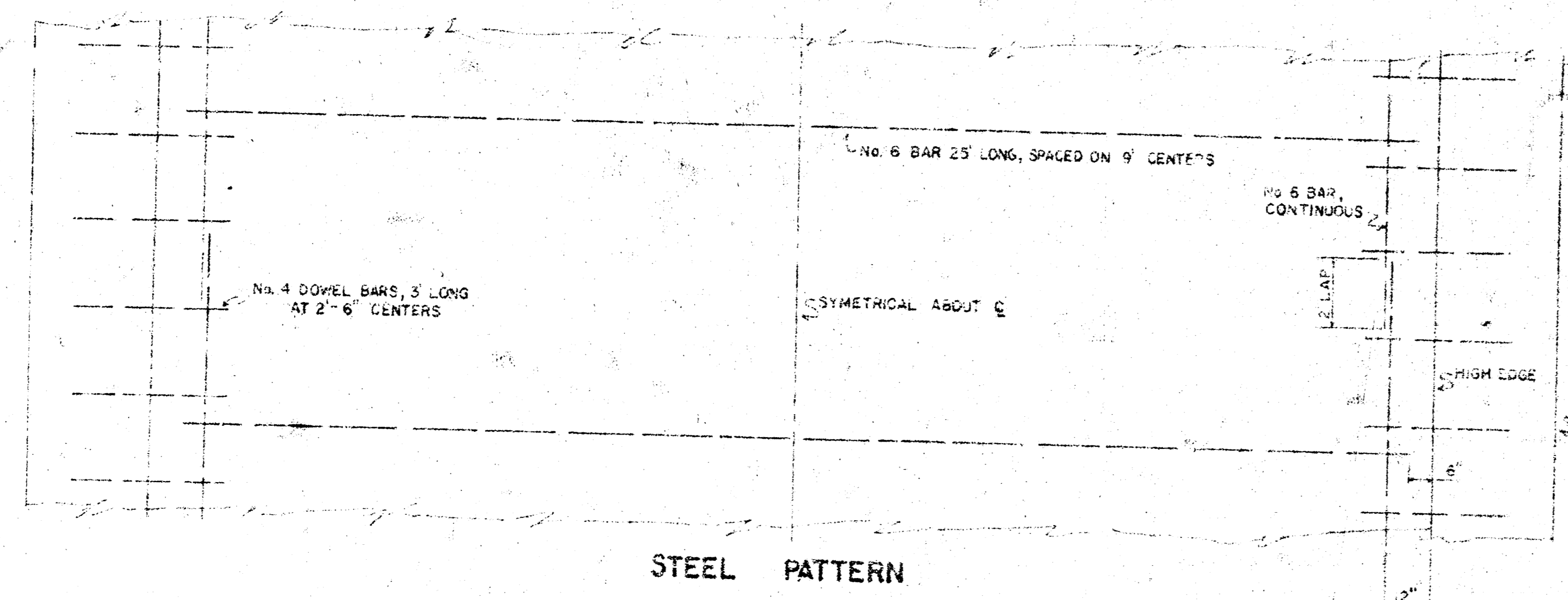
**EDGEMOOR DRIVE**  
**NL 19TH TO SL 21 ST**  
**TYPICAL SECTIONS OF 30' ASPHALTIC CONCRETE PAVEMENT**



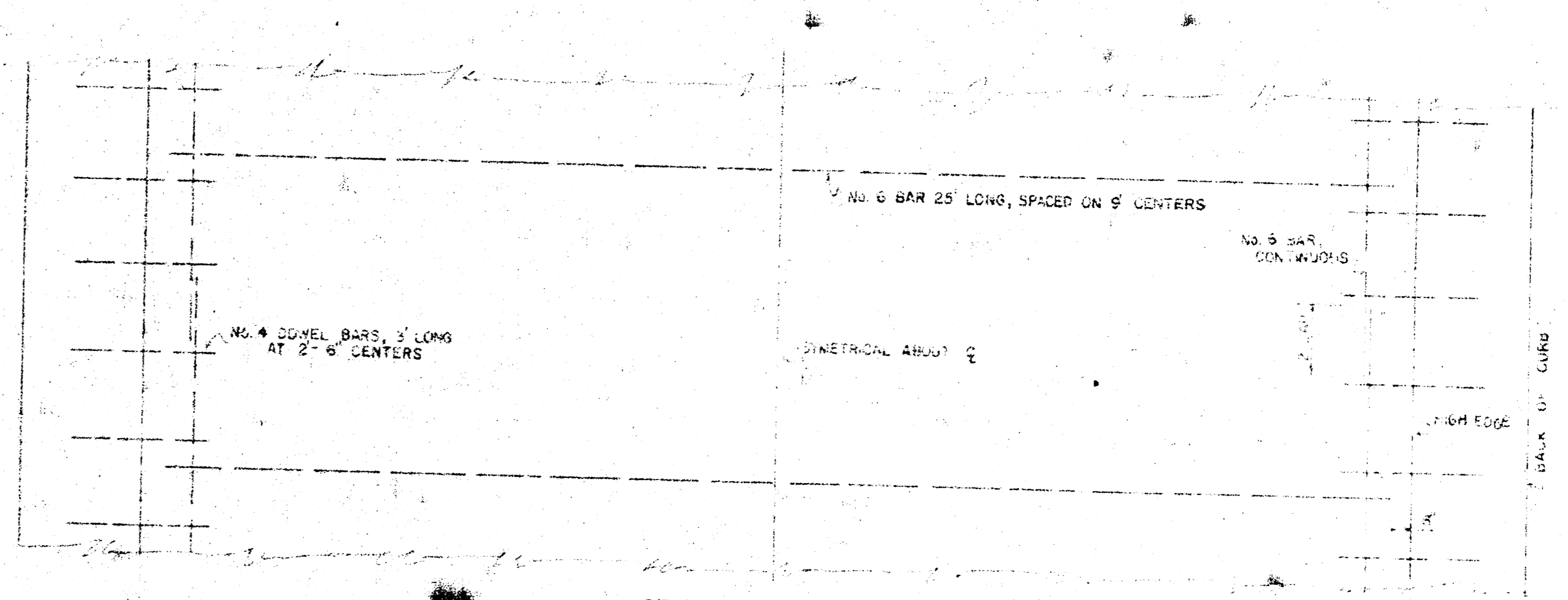
TYPICAL SECTION WITH STANDARD CROWN



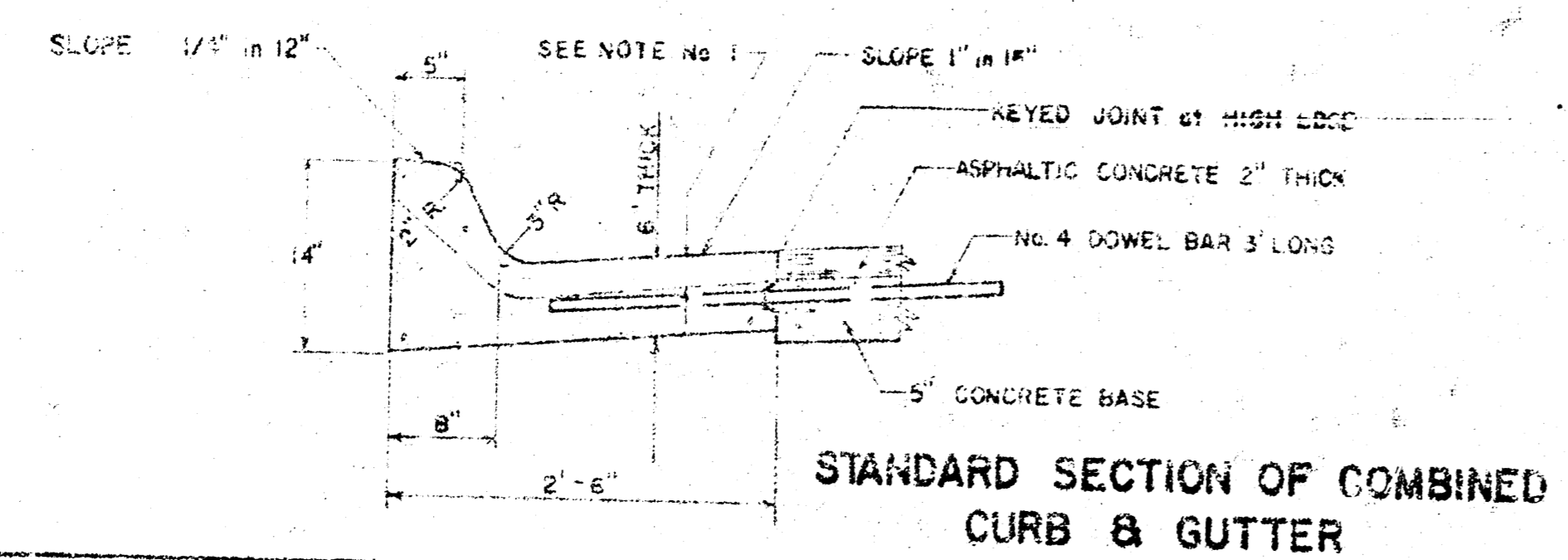
TYPICAL SECTION WITH ALTERNATE CROWN



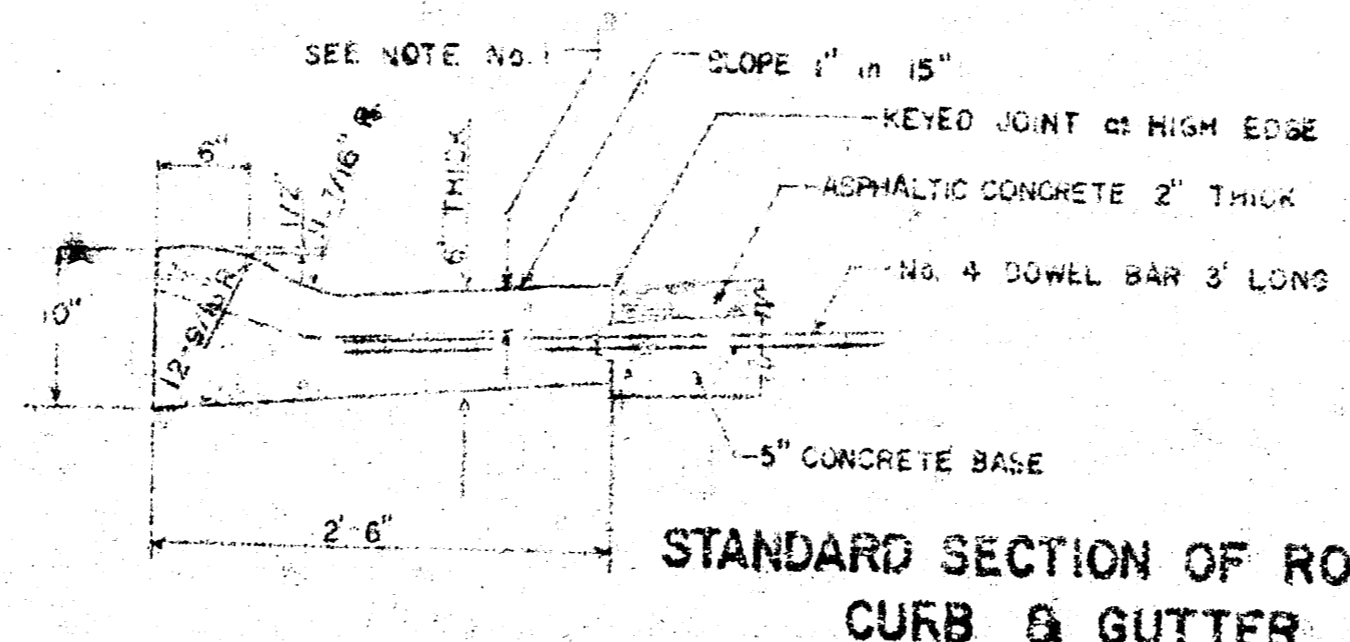
STEEL PATTERN



STEEL PATTERN



STANDARD SECTION OF COMBINED CURB & GUTTER



STANDARD SECTION OF ROLL-TYPE CURB & GUTTER

**GENERAL NOTES**  
 1. CONTRACTION JOINTS MAY BE CONSTRUCTED IN COMBINED CURB AND GUTTER BY SAWING WITH AN APPROVED CONCRETE SAW. THE SAW CUT SHALL EXTEND 2 1/2" BELOW THE SURFACE OF THE GUTTER AND CURB. SAWED CONTRACTION JOINTS SHALL HAVE A MAXIMUM SPACING OF 10' AND BE FILLED WITH A SPECIFIED JOINT FILLER, SUCH THAT THE JOINT IN THE GUTTER SECTION WILL BE COMPLETELY FILLED.



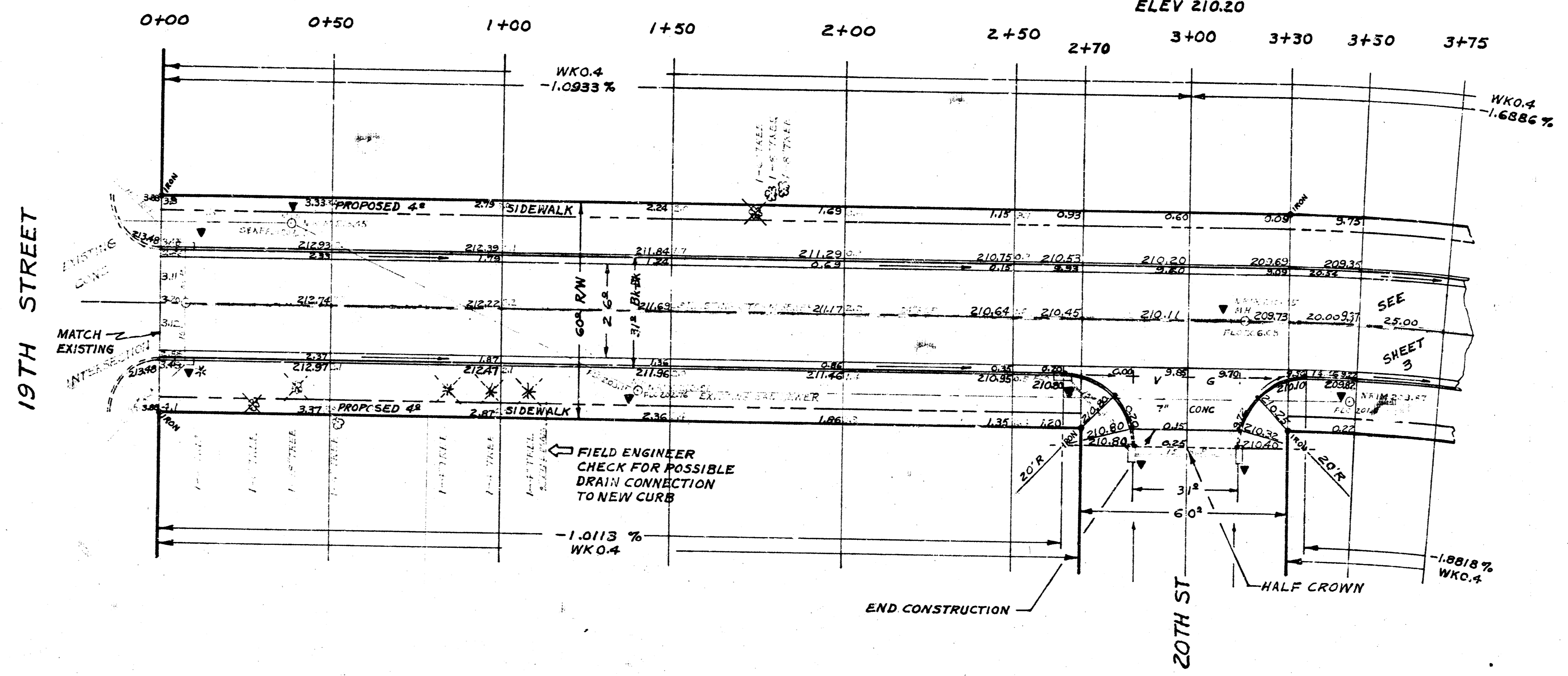
CITY OF WICHITA, KANSAS  
 Department of Public Works - Engineering Division  
 R.W. Linn  
 City Engineer  
 Date: \_\_\_\_\_  
 Project No. DAKS 574021

1/8

BASELINE ON EDGEMOOR  
 BM 212.16 CITY STD @ RIDGEWOOD E 21ST 32' E 44' S OF & BOTH  
 BM 217.21 NW COR CONC PORCH W SIDE BRICK HOUSE 1936 N EDGEMOOR  
 BM 199.06 D CUTE END RADIUS SE COR 21ST & EDGEMOOR

SCALE 1" = 20'

PVI  
 NO' VC  
 ELEV 210.20



**SUBGRADE**  
 TYPE OF SUBGRADE DEPARTMENT SHALL BE OF  
 MAINTENANCE RECORDS FOR THIS PROJECT  
 TO BE DETERMINED BY THE CONTRACTOR  
 BEFORE THE START OF CONSTRUCTION  
 TO BE CONTROLLED BY "OTHERS".

NOTE TO FIELD ENGINEER & CONTRACTOR  
 ALL INLETS & MANHOLES TO BE  
 ADJUSTED BY OTHERS

ALL INLETS & MANHOLES TO BE  
 ADJUSTED BY OTHERS

**TREE REMOVAL**

FIELD ENGINEER TO  
 DETERMINE TREE REMOVAL

FIELD ENGINEER - PROPERTY  
 OWNER IS TO REMOVE ALL LOOSE  
 FILL FROM STREET R/W  
 BEFORE STARTING ANY CONSTRUCTION  
 RE-CROSS-SECTION THESE AREAS

ALL PROPERTY IRONS ON THIS  
 PROJECT TO BE PROTECTED AT  
 ALL TIMES

FIELD ENGINEER - CROSS SECTIONS  
 MUST BE TAKEN BEFORE EXCAVATION  
 AND AFTER EXCAVATION

3000 CU YDS OF EXCAVATION AND COMPACTED  
 FILL ADDED TO ESTIMATED QUANTITIES FOR  
 REMOVAL AND REPLACEMENT OF UNSUITABLE  
 MATERIAL. THE FIELD ENGINEER SHALL  
 DETERMINE WHICH SOIL IS UNSUITABLE.  
 THE CONTRACTOR SHALL USE MATERIAL ON  
 PROJECT TO MAKE ANY FILL REQUIRED BY  
 REMOVAL OF UNSUITABLE MATERIAL

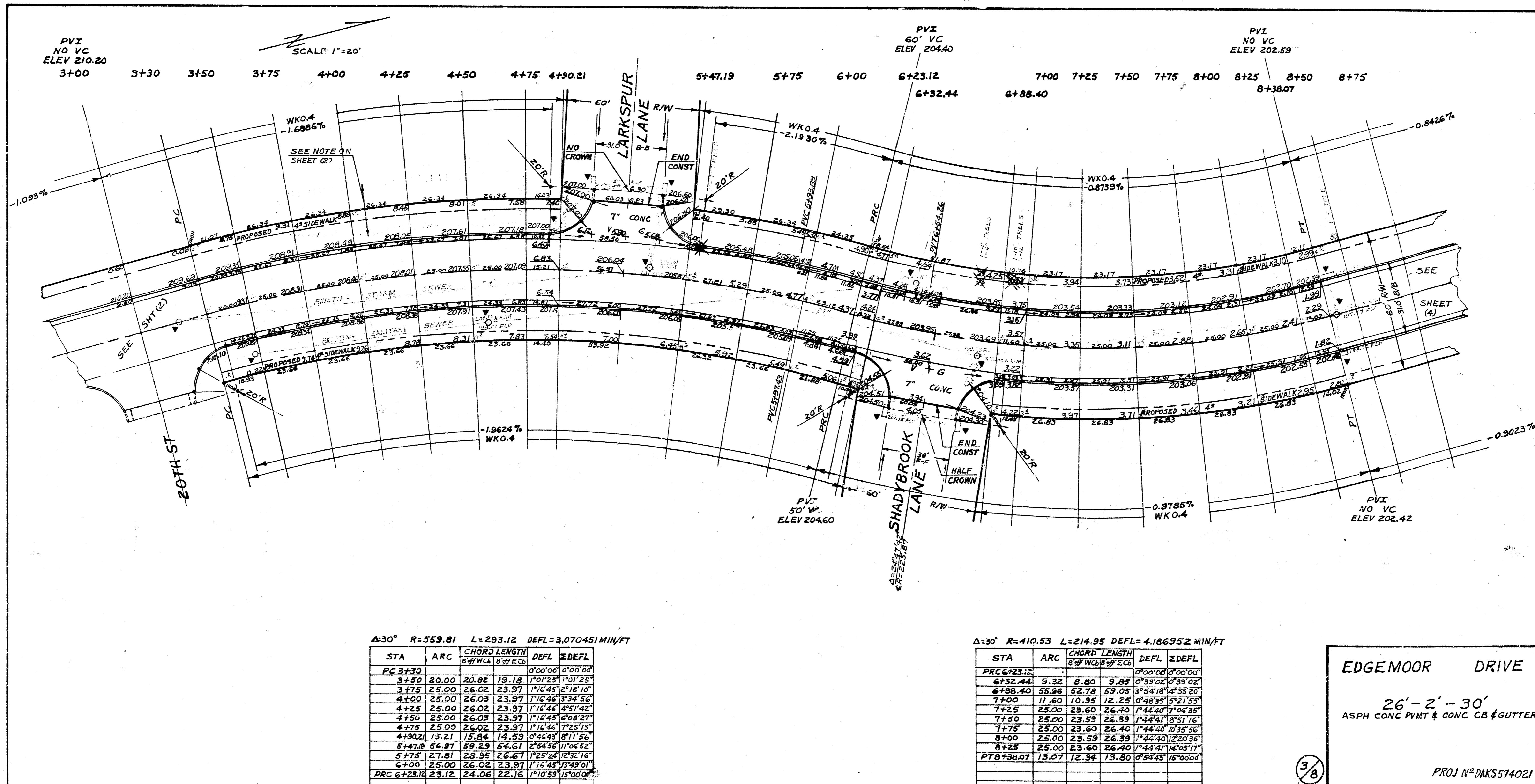
DRAWN BY A. RIGGS  
 PLAN D. AUGUSTINE  
 CHECKED BY D. AUGUSTINE  
 DATE 1/25/56

EARTH WORK		
TYPE	PROPERTY	CITY
EXCAVATION	2288.92 CU YD	156.47 CU YD
10% TOTAL EXCAV	258.83 CU YD	15.45 CU YD
COMPACTED FILL	24.24 CU YD	172.12 CU YD
10% TOTAL COMP. FILL	2.67 CU YD	26.48 CU YD

**EDGEMOOR DRIVE**  
 NL 19TH ST TO SL 21ST ST  
 26' - 2' - 30'  
 ASPH CONC PVMT & COMB CB & GUTTER  
 CITY OF WICHITA KANSAS  
 R.W. LINN CITY ENGINEER  
 DATE PROJ NO. DAKS 574021



2/8



$\Delta=30^\circ$   $R=559.81$   $L=293.12$   $DEFL=3.070451$  MIN/FT

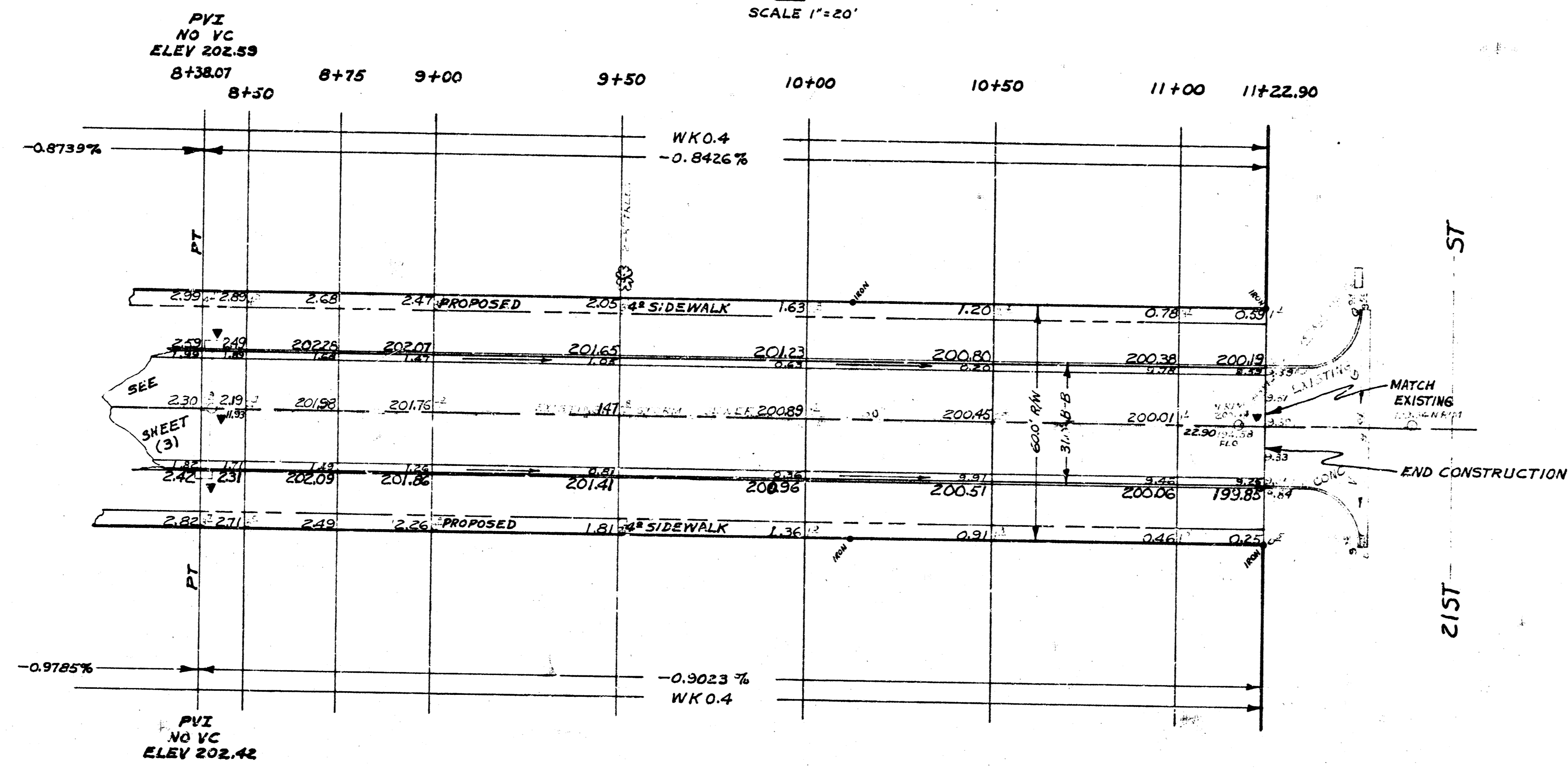
STA	ARC	CHORD LENGTH	DEFL	IDEFL
		8" WGS	8" EGS	
PC 3+30			0'00"00	0'00"00
3+50	20.00	20.02	19.18	1'01"25
3+75	25.00	26.02	23.97	1'16"45
4+00	25.00	26.03	23.97	1'16"46
4+25	25.00	26.02	23.97	1'16"46
4+50	25.00	26.03	23.97	1'16"46
4+75	25.00	26.02	23.97	1'16"46
4+90.21	13.21	15.84	14.59	0'46"43
5+47.19	56.97	59.29	54.61	2'54"56
5+75	27.81	28.95	26.67	1'25"26
6+00	25.00	26.02	23.97	1'16"45
PRC 6+23.12	23.12	24.06	22.16	1'10"59

$\Delta=30^\circ$   $R=410.53$   $L=214.95$   $DEFL=4.186952$  MIN/FT

STA	ARC	CHORD LENGTH	DEFL	IDEFL
		8" WGS	8" EGS	
PRC 6+23.12			0'00"00	0'00"00
6+32.44	9.32	9.80	9.88	0'39"02
6+88.40	55.96	52.78	59.05	3'54"18
7+00	11.60	10.95	12.25	0'48"35
7+25	25.00	23.60	26.40	1'44"07
7+50	25.00	23.59	26.39	1'44"07
7+75	25.00	23.60	26.40	1'44"07
8+00	25.00	23.59	26.39	1'44"07
8+25	25.00	23.60	26.40	1'44"07
PT 8+38.07	13.07	12.34	13.80	0'54"43

**EDGEMOOR DRIVE**  
 26'-2'-30'  
 ASPH CONC PMT & CONC CB & GUTTER  
 PROJ N° DKS514021

3/8



EDGEMOOR DRIVE

26'-2'-30'

ASPH CONC PAVT & CONC CB & GUTTER

PROJ N<sup>o</sup> DAKS 574021

4/8