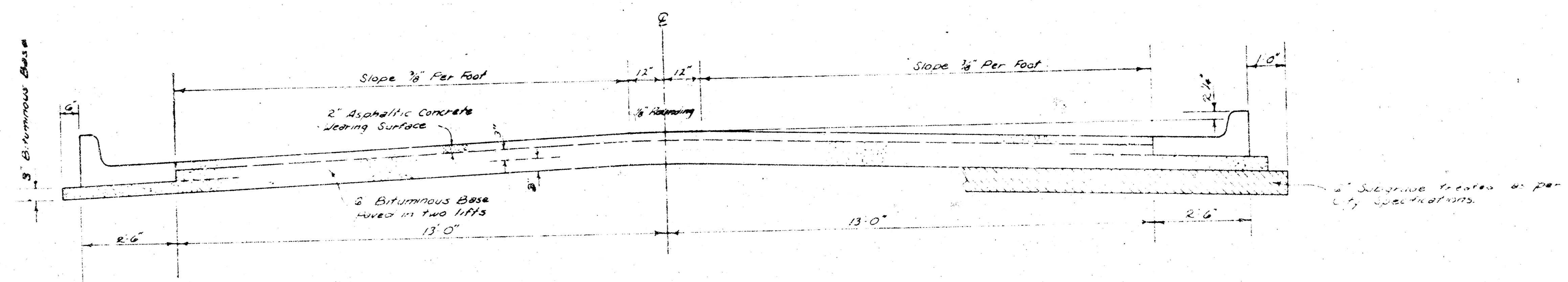


**EDGEMOOR DRIVE WEST
N. L. 21st ST. TO
N. L. LOT 1, WILLIE COLE 1st ADDn**



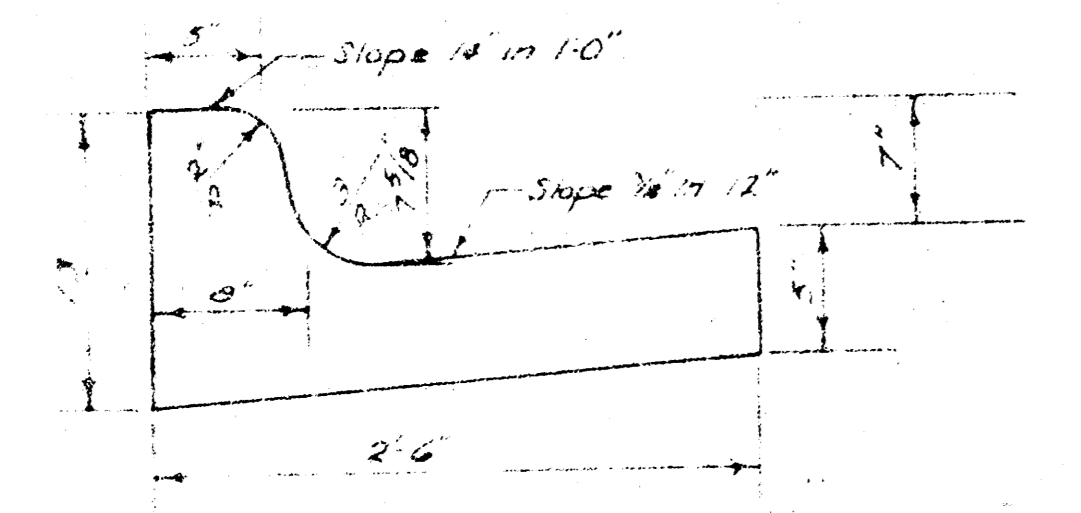
TYPICAL SECTION

3' ASPHALTIC CONCRETE PAVEMENT WITH BITUMINOUS BASE

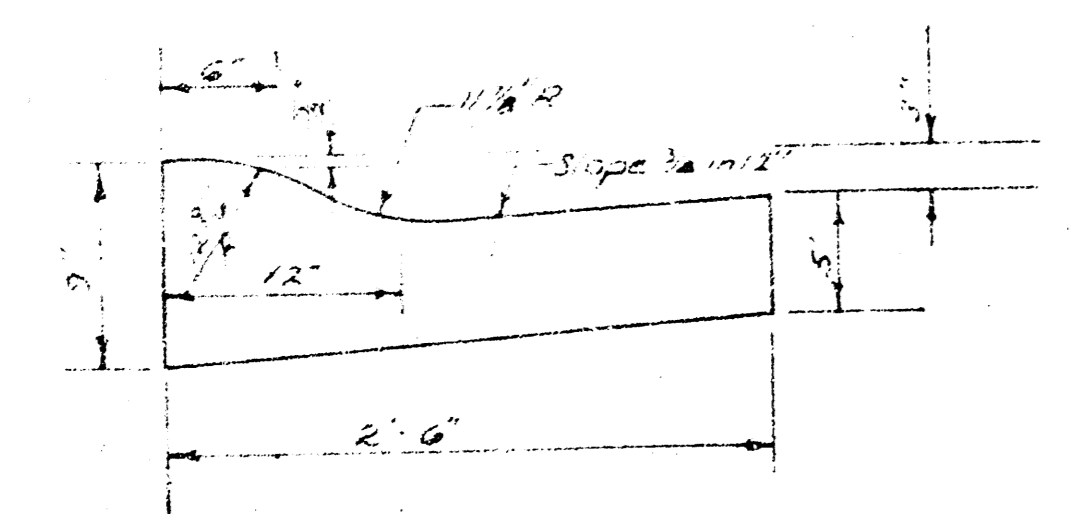
A TACK COAT OF EMULSIFIED ASPHALT (SS-IH) SHALL BE APPLIED AT AN APPROXIMATE RATE OF 0.05 GALLONS PER SQ YD BETWEEN LIFTS OF ASPHALTIC MATERIALS WHEN ORDERED BY THE ENGINEER. TACK COAT WILL NOT BE PAID FOR DIRECTLY AND SHALL BE CONSIDERED AS SUBSIDIARY TO PRICE BID FOR ASPHALTIC PAVEMENT. BITUMINOUS BASE AND ASPHALTIC CONCRETE WEARING SURFACE SHALL BE PLACED WITH A LAYDOWN MACHINE, HAVING AUTOMATIC ELECTRONIC CONTROLS FOR CROWN AND GRADE. CONSTRUCTION JOINTS IN EACH LIFT SHALL BE STAGGERED A MINIMUM DISTANCE OF 1' WITH JOINTS IN PRECEDING LIFTS AND SUCH THAT A JOINT WILL BE CONSTRUCTED ON THE PAVEMENT CENTERLINE IN THE TOP LIFT.

The AC pavement between the curb and gutter shall be paid as So Yes B AC pavement on bituminous base. The Bituminous Base under the curb and gutter shall be paid as So Yes B Bituminous Base.

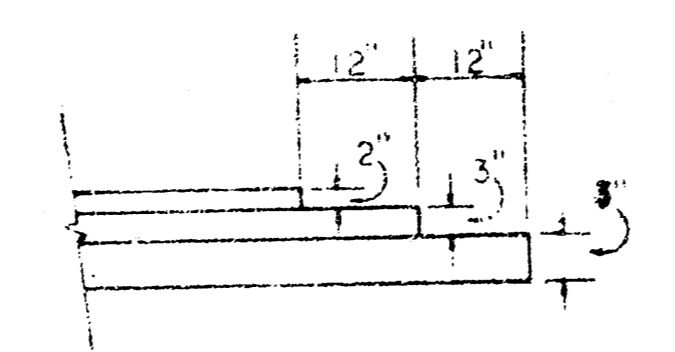
COMBINED CURB & GUTTER



ROLL TYPE CURB & GUTTER



DETAIL OF TRANSVERSE CONSTRUCTION JOINTS



TRANSVERSE CONSTRUCTION JOINTS SHALL BE CONSTRUCTED IN FLEXIBLE BASE PAVEMENTS AT LOCATIONS WHERE PAVEMENT TEMPORARILY ENDS TO FACILITATE FUTURE PAVEMENT CONSTRUCTION AS SHOWN BY DETAIL. THE COST OF CONSTRUCTING THE TRANSVERSE CONSTRUCTION JOINTS SHALL NOT BE MEASURED OR PAID FOR DIRECTLY BUT SHALL BE INCLUDED IN THE BID PRICE FOR SQUARE YARDS OF ASPHALTIC CONCRETE PAVEMENT.

1/6

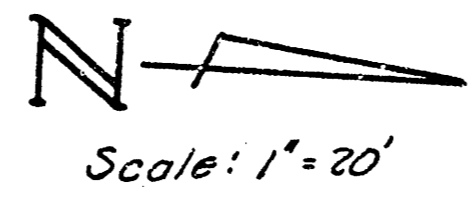
CITY OF WICHITA, KANSAS
DEPARTMENT OF PUBLIC WORKS — ENGINEERING
R. W. LINN CITY ENGINEER
DATE
PROJ. NO. 472 76 245 80407 000 000 001

1/3

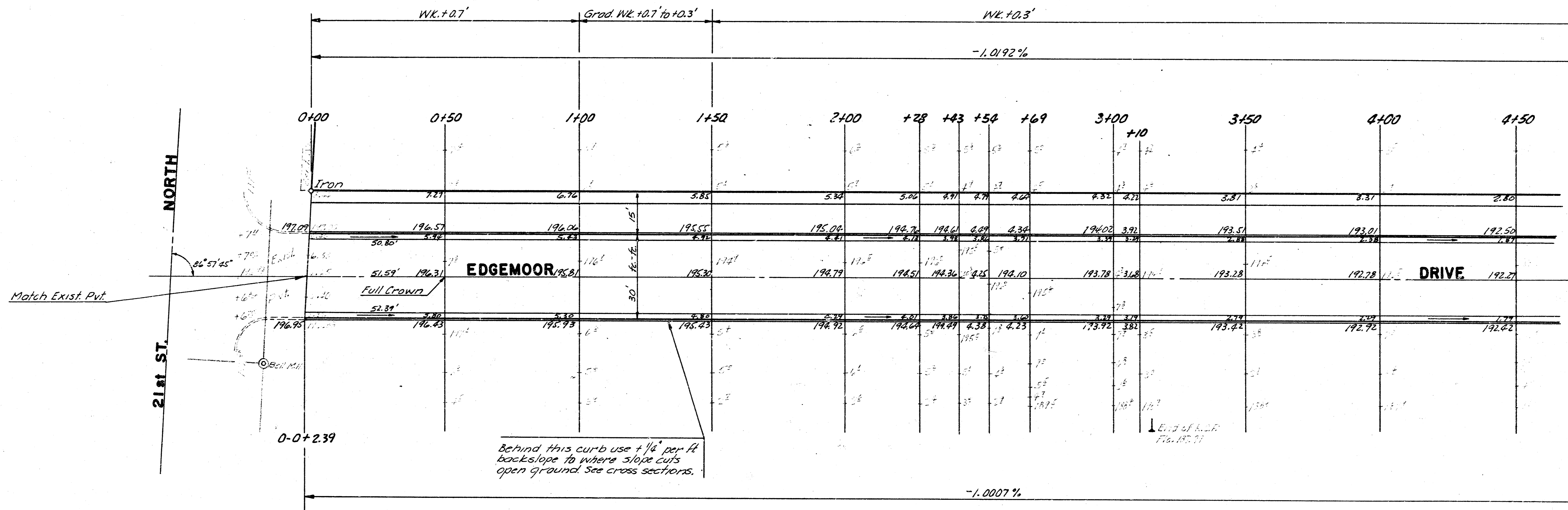
B FILMED FROM THE BEST AVAILABLE COPY.....

B.M. 197.19^o Cut in top curb on N. Side 21st St. Approx. 10' E. of E.L. Edgemoor Drive West.
 B.M. 192.95 S.E. 2nd conc. patio behind house #1003 in Willie Cole 1st Addⁿ

Baseline on W. line of Edgemoor Drive West



SURVEY 4434
 PLAN C&E
 C&E
 CHICAGO



CAUTION
 UNDERGROUND
 UTILITIES
 Please check for K, G, E or
 other utilities before
 excavating.

SUB-GRADE
 TYPE OF SUB-GRADE TREATMENT SHALL BE DETERMINED BY THE FIELD ENGINEER. SUB-GRADE TREATMENT MAY CONSIST OF LIME TREATMENT, CEMENT TREATMENT, SUB-GRADE MODIFICATION, OR ANY COMBINATION OF THESE.

Earthwork Quantities

Excavation

Property	City
1091.3 C.Y.	1180.0 C.Y.
+10% 109.1	+10% 118.0
Total 1200.4 C.Y.	Total 1298.0 C.Y.

Total Manipulation 2746.4 S.X

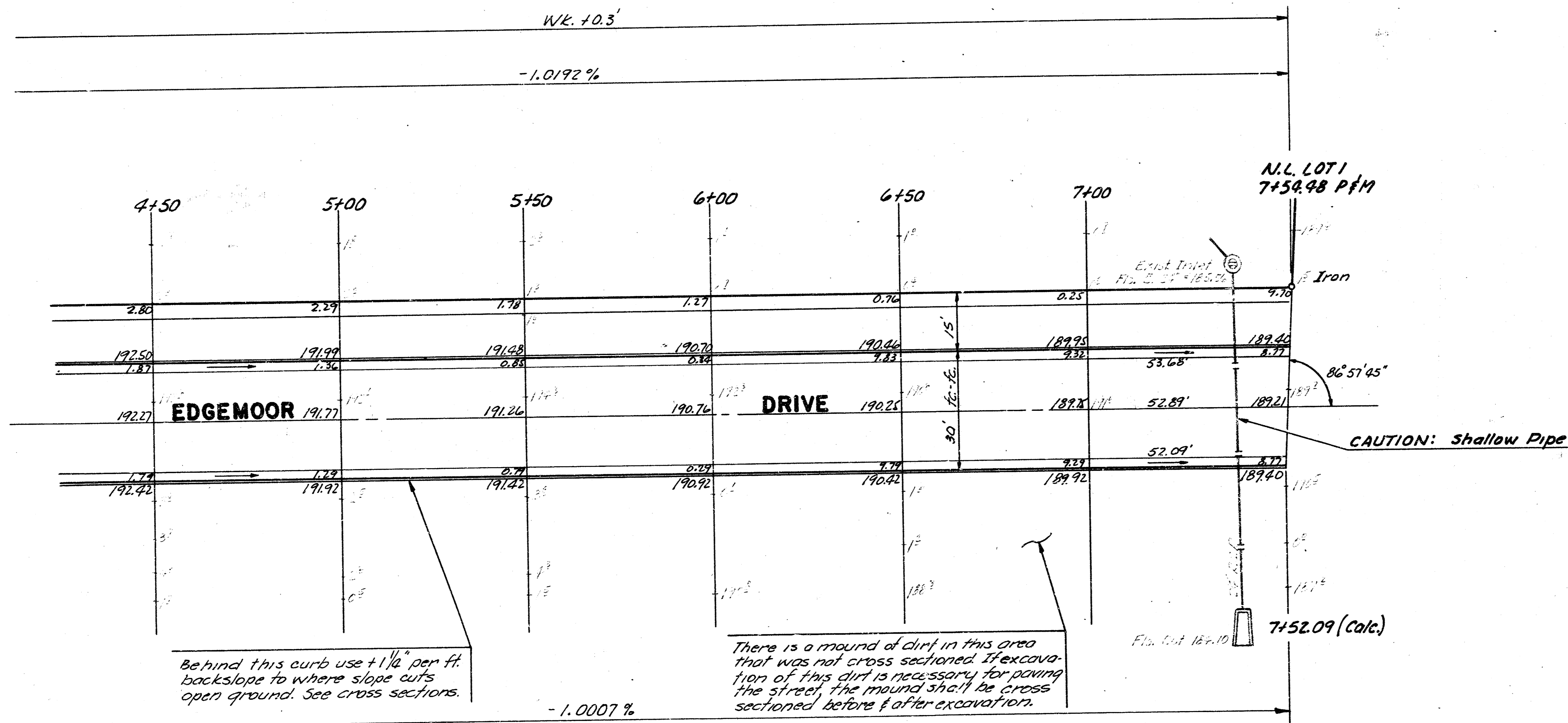
2/6

EDGEMOOR DRIVE WEST
 N. L. 21st ST. TO
 N.L. LOT I, WILLIE COLE 1st ADDⁿ
 CITY OF WICHITA, KANSAS
 R.W. LINN CITY ENGINEER
 DATE

PROJ. NO. 472 76 245 80407 000 000 001

2/3

N
Scale: 1" = 20'



3/6

EDGEMOOR DRIVE WEST
 N. L. 21st ST. TO
 N. L. LOT 1, WILLIE COLE 1st ADDn
 PROJ. NO. 472 76 245 80407 000 000 001 3/3

R FILMED FROM THE BEST AVAILABLE COPY