

# RECONSTRUCTION OF CERTAIN BASKETBALL/TENNIS COURTS AND PEDESTRAIN SURFACES

GENERAL NOTES

## PHASE III

PLANS FOR

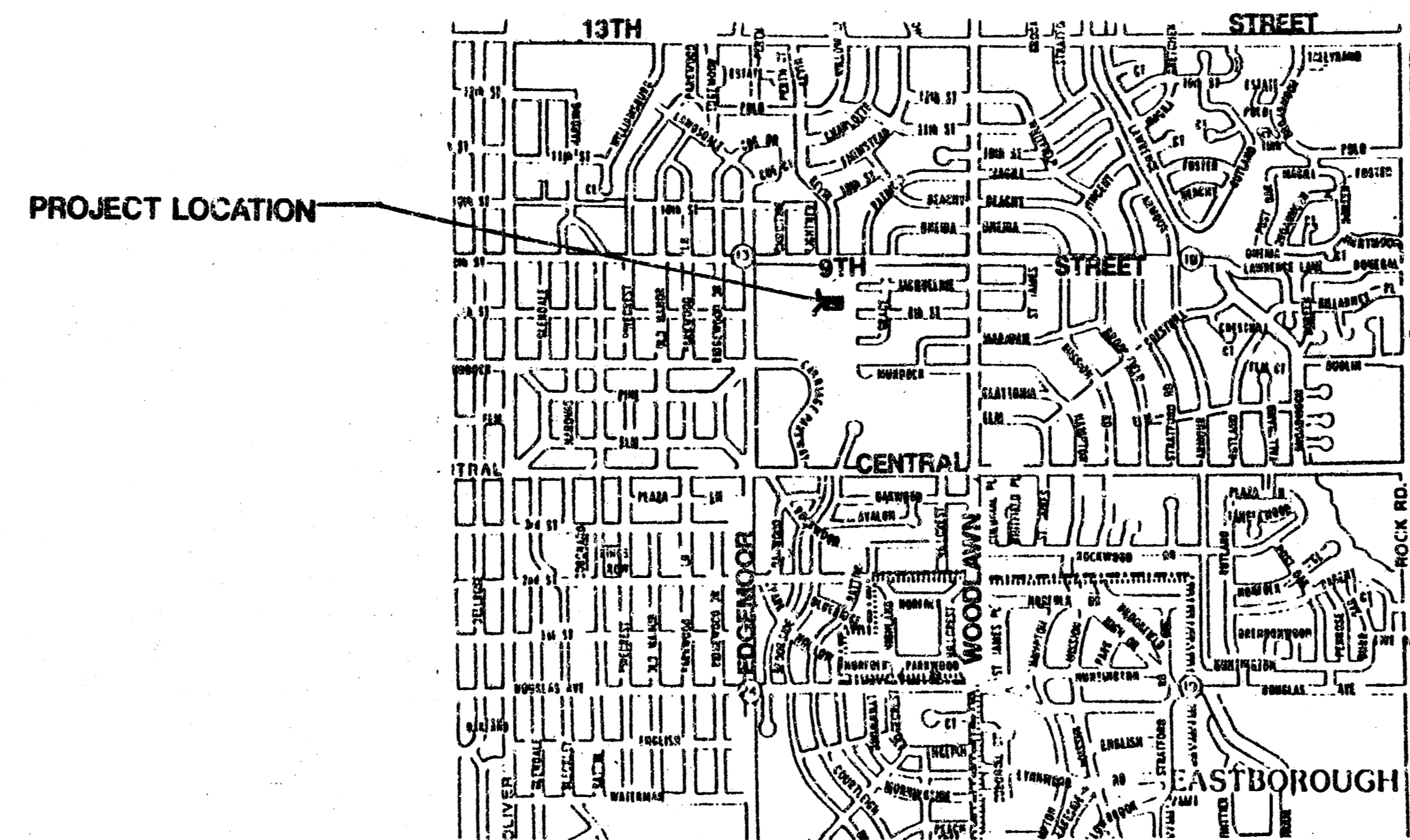
NEW TENNIS COURT CONSTRUCTION ( 4 COURTS )  
IN EDGEMOOR PARK

CITY OF WICHITA, KANSAS

INDEX NO. 785063

PROJECT NO. 472-76-245-82073-000-000-001

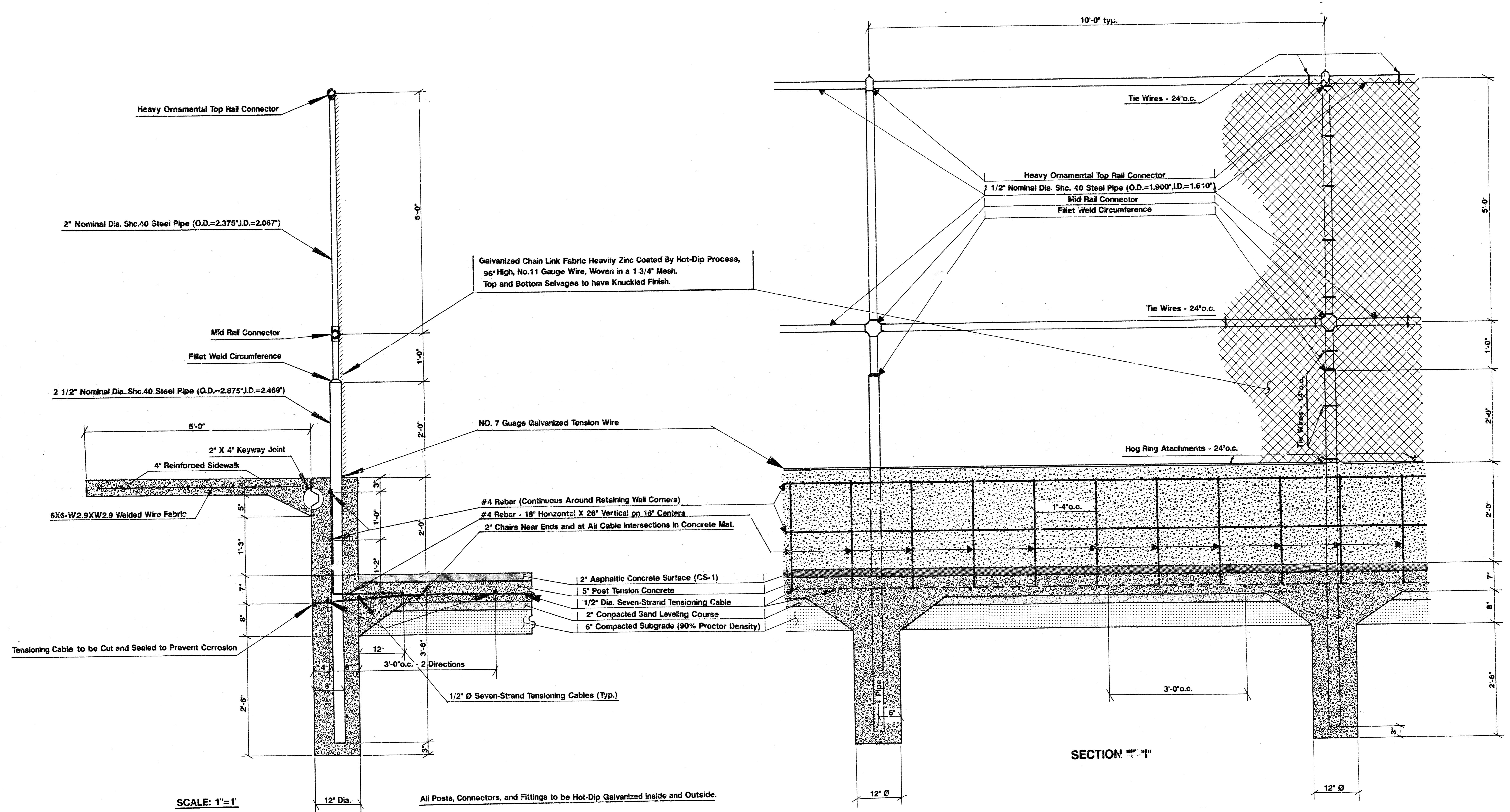
INDEX	
SHEET NO.	DESCRIPTION
1	TITLE SHEET
2	SITE PLAN & COORDINATE SYSTEM
3	SIDEWALK APPROACH TO TENNIS COURTS
4	CONSTRUCTION PLAN
5	TYPICAL 10' FENCE SECTIONS
6	TYPICAL RETAINING WALL FENCE SECTIONS
7	TENNIS COURT ENTRANCE DETAILS
8	MISCELLANEOUS DETAILS
9	MISCELLANEOUS DETAILS
10	LIGHTING SITE PLAN
11	LIGHTING DETAILS
12-13	CROSS SECTIONS



### BENCH MARK SUMMARY

B.M. = North West Corner Concrete Wall at the North West Corner  
Existing Tennis Courts. Elev. = 189.96

M.E. LINDEBAK, P.E.; CITY ENGINEER



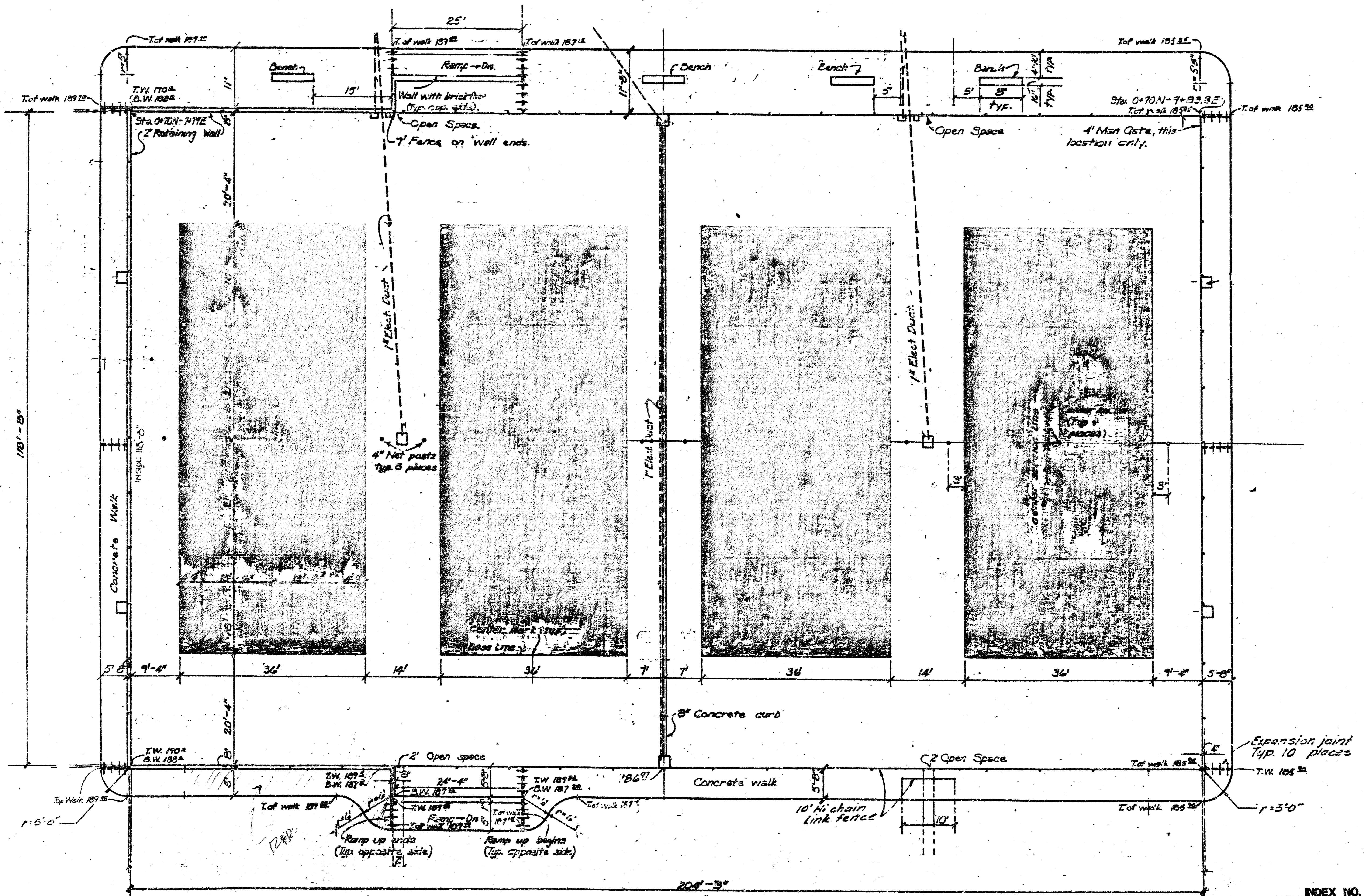
SCALE: 1"=1'

All Posts, Connectors, and Fittings to be Hot-Dip Galvanized Inside and Outside.

SECTION "C"- "C"

SECTION "A"- "A"

EDGEMOOR PARK PHASE II		
SCALE	APPROVED BY	DRAWN BY
DATE		
TYPICAL RETAINING WALL FENCE SECTIONS		
		DRAWING NUMBER



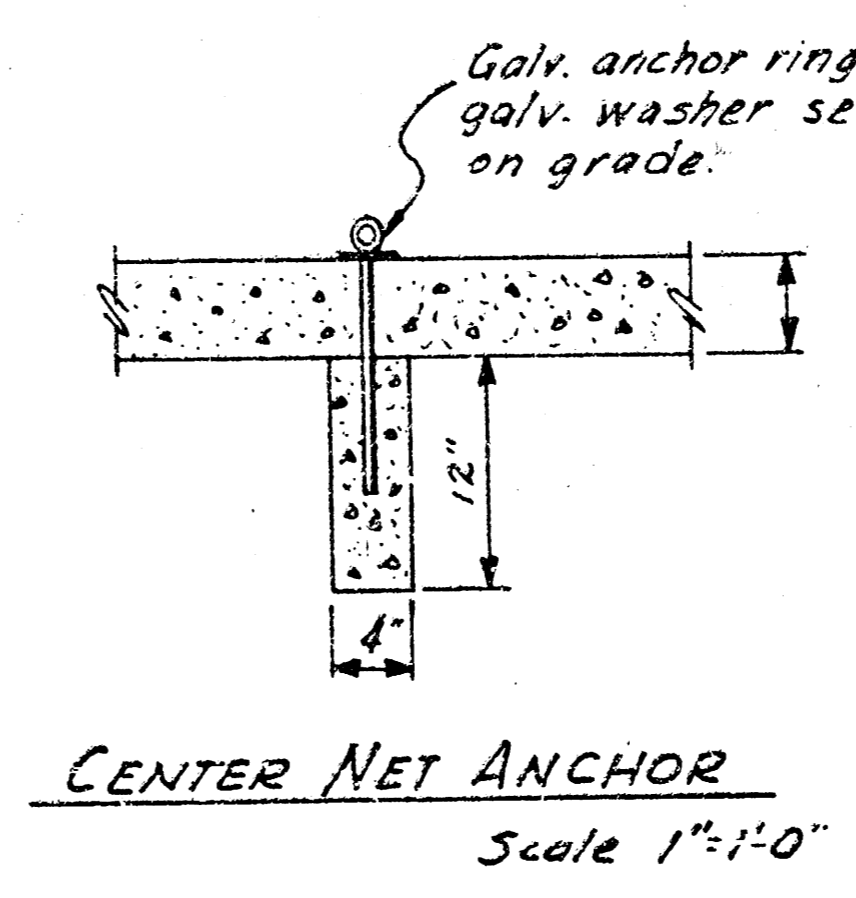
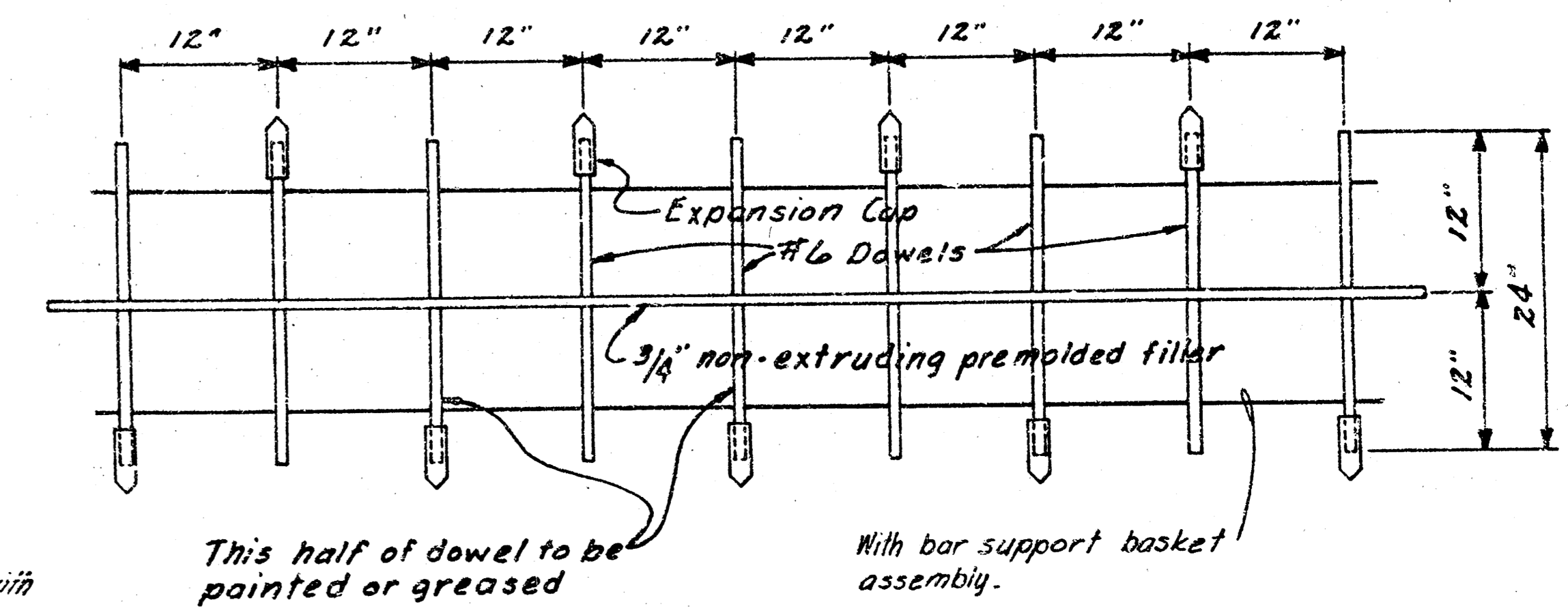
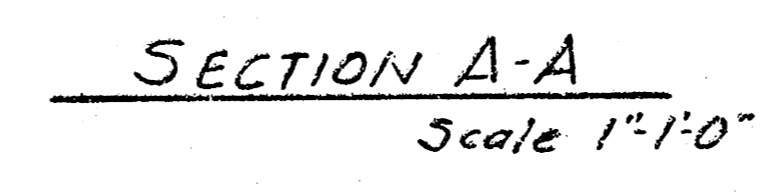
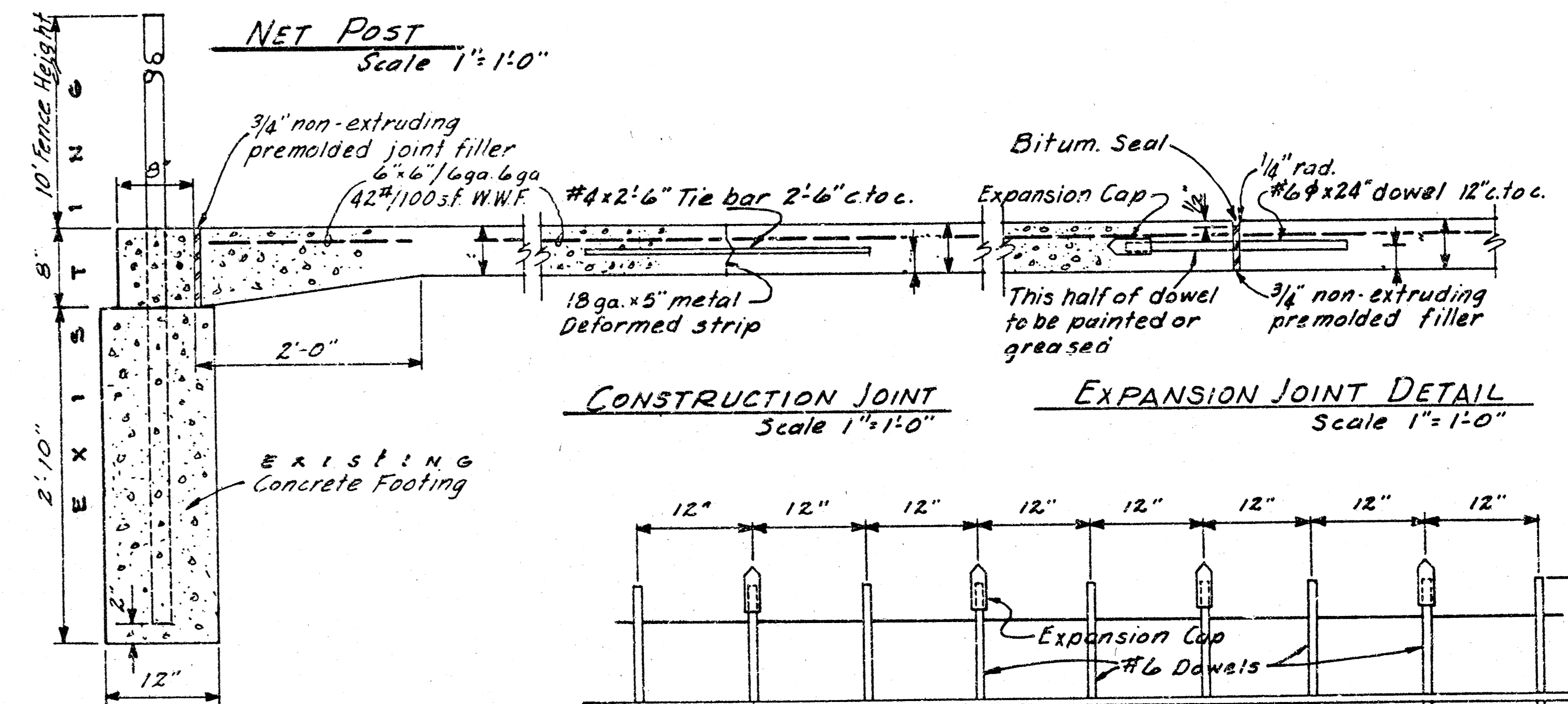
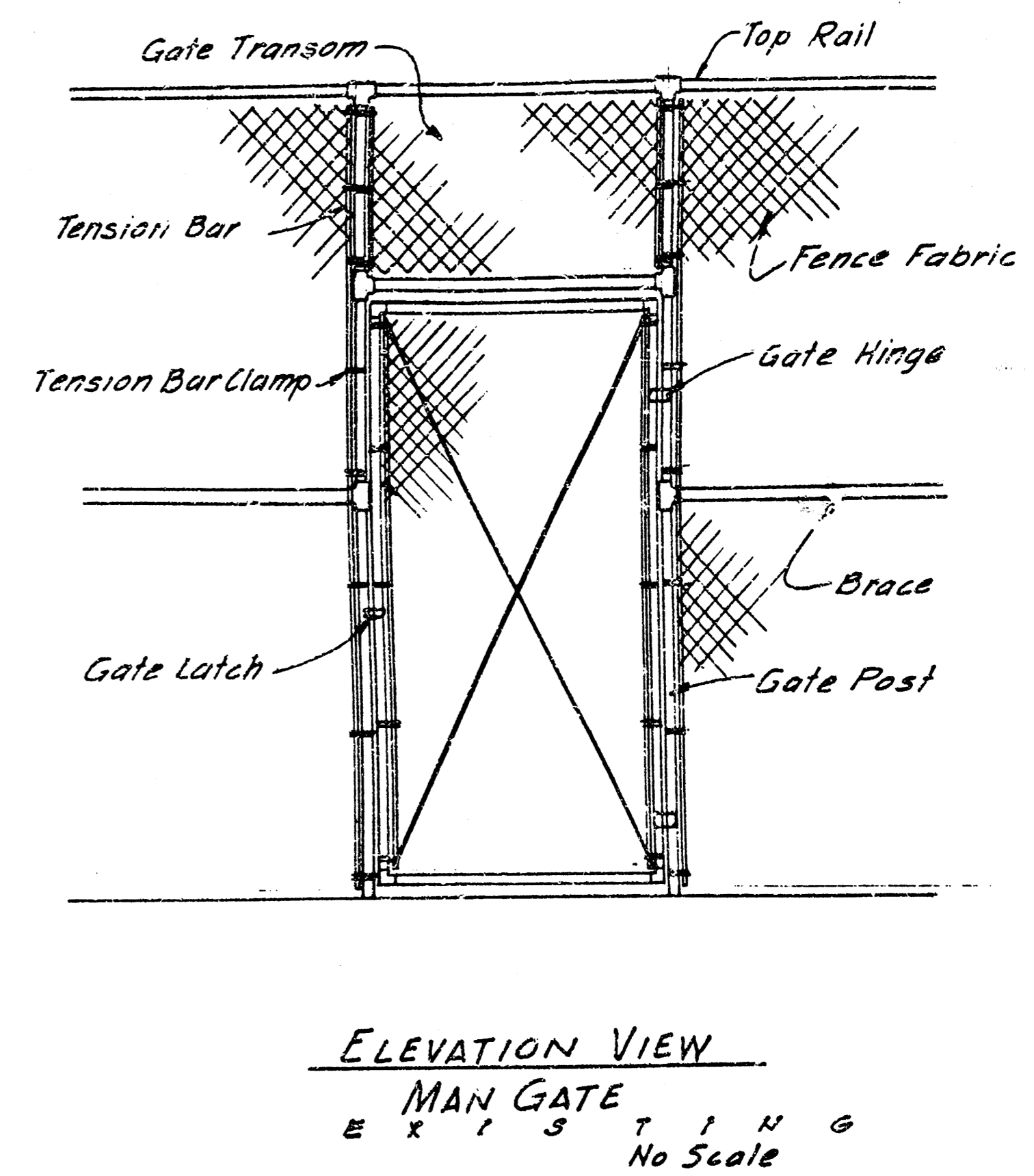
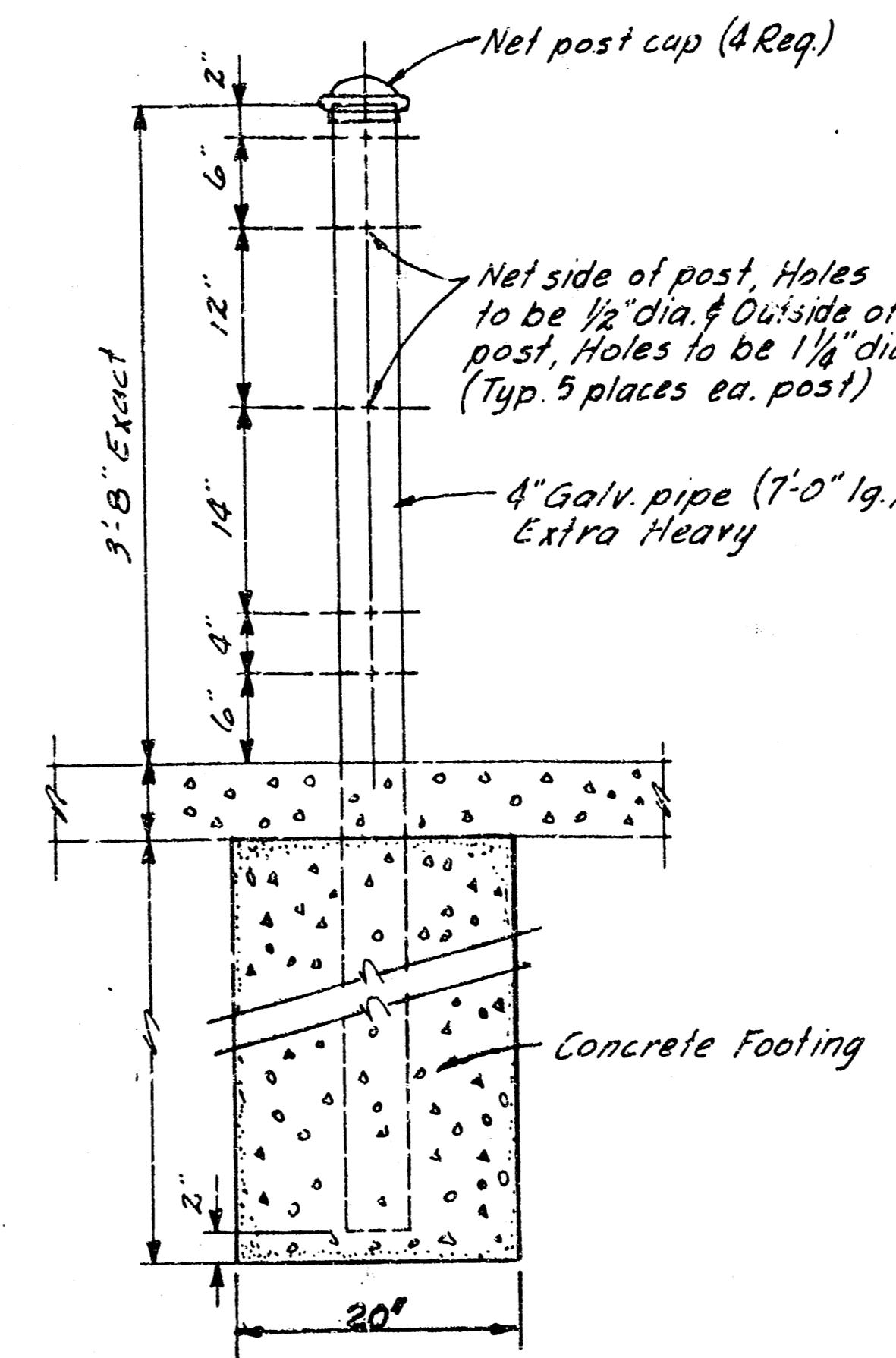
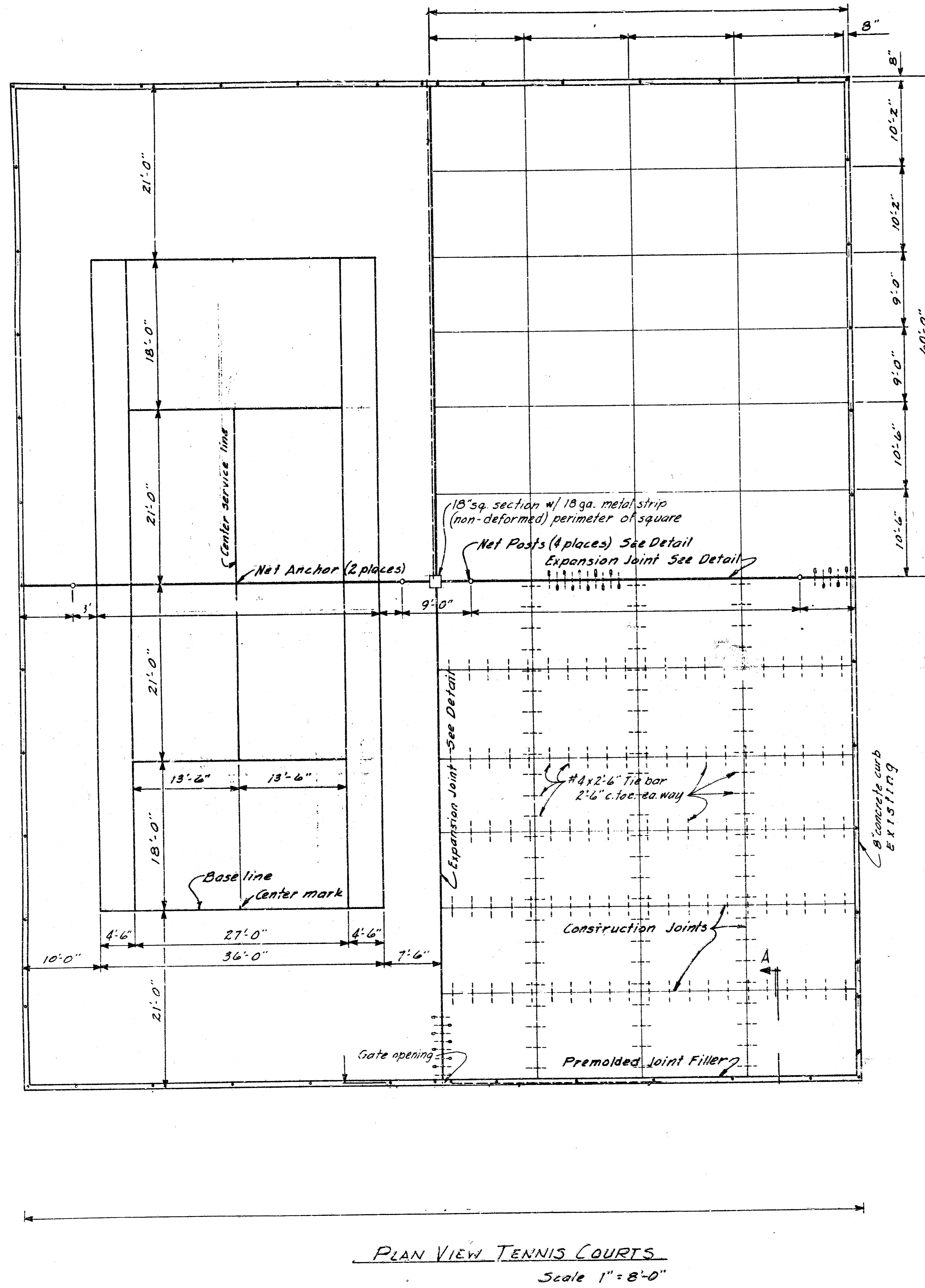
N

**Tennis Courts**  
**EDGEMOOR PARK**  
 REPAIR & RECONSTRUCTION OF EXISTING TENNIS  
 COURTS AND WALKWAYS  
 Board of Park Commissioners  
 Wichita, Kansas

Date \_\_\_\_\_ Drawn \_\_\_\_\_ Scale \_\_\_\_\_ Sheet # \_\_\_\_\_  
 1"=10'-0"

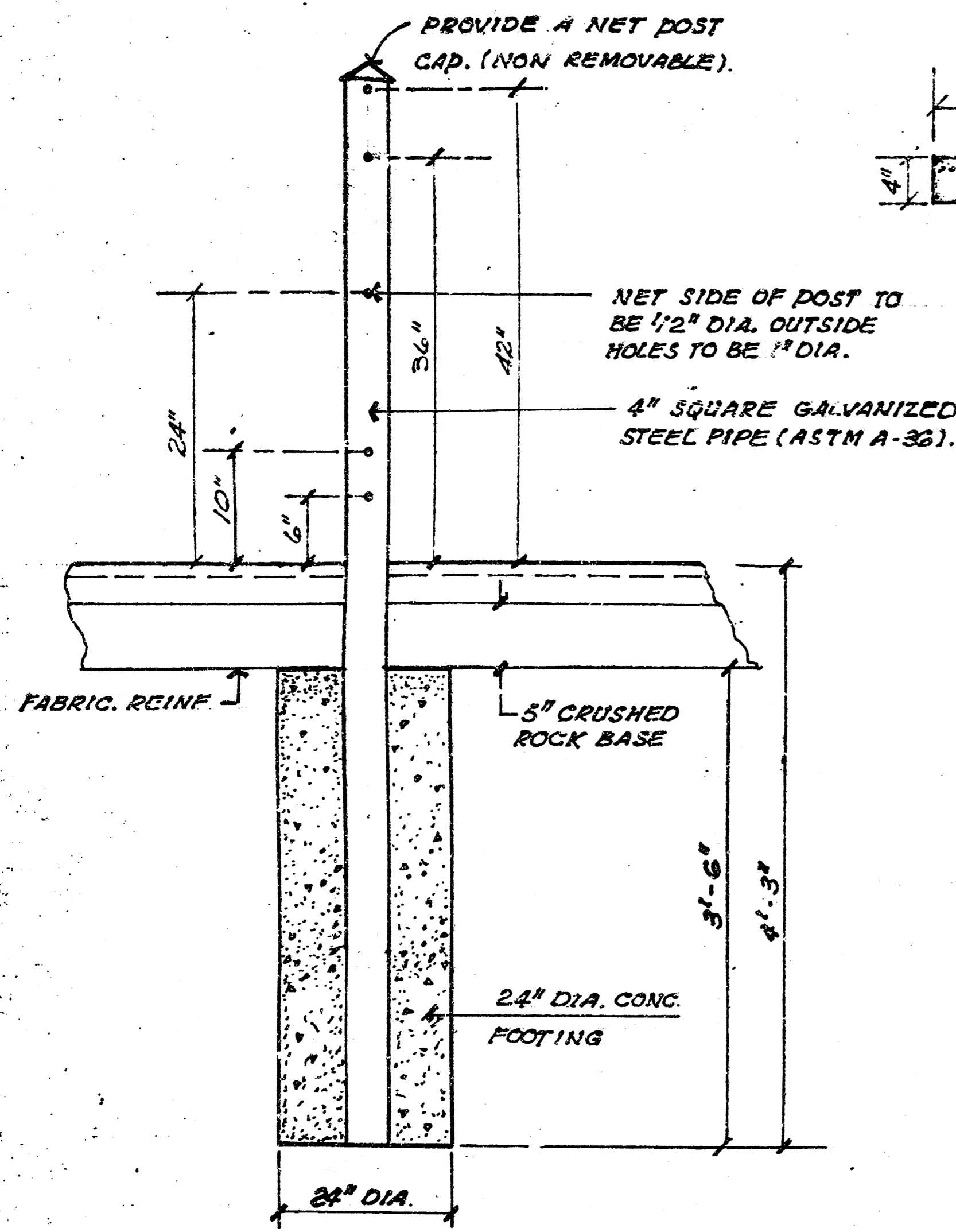
INDEX NO. 785063

Note: Location of construction joints are typical in each quadrant.

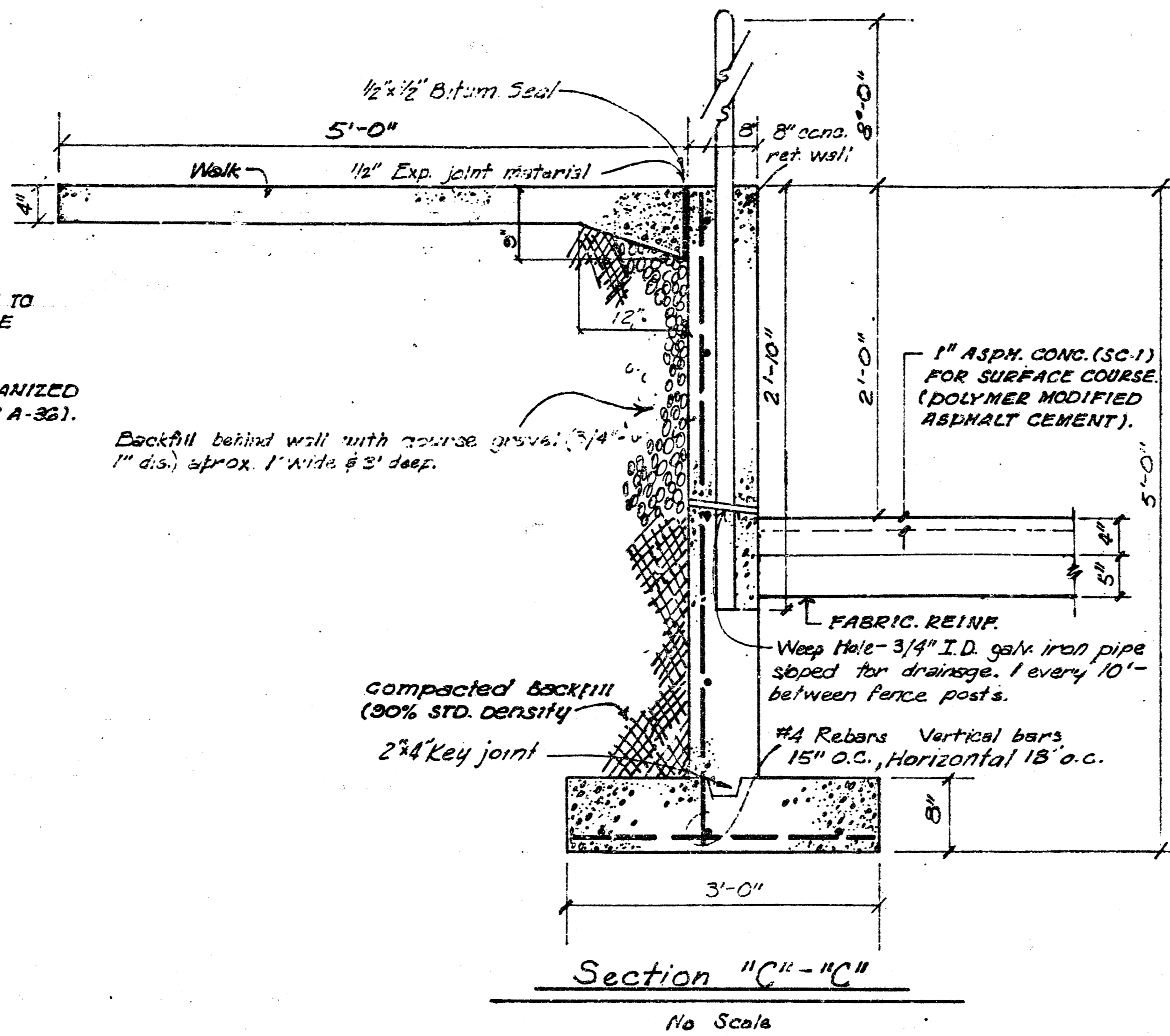


- NOTES:
1. Shaded area to be green, surrounding area to be red.
  2. See specifications for painting of reinforced concrete Tennis Courts.
  3. Markings: Center mark 4" long by 2" wide from center of each base line into court. Center service line 2" wide, all other lines not less than 1" nor more than 2" wide, except base lines which may be 4" wide.

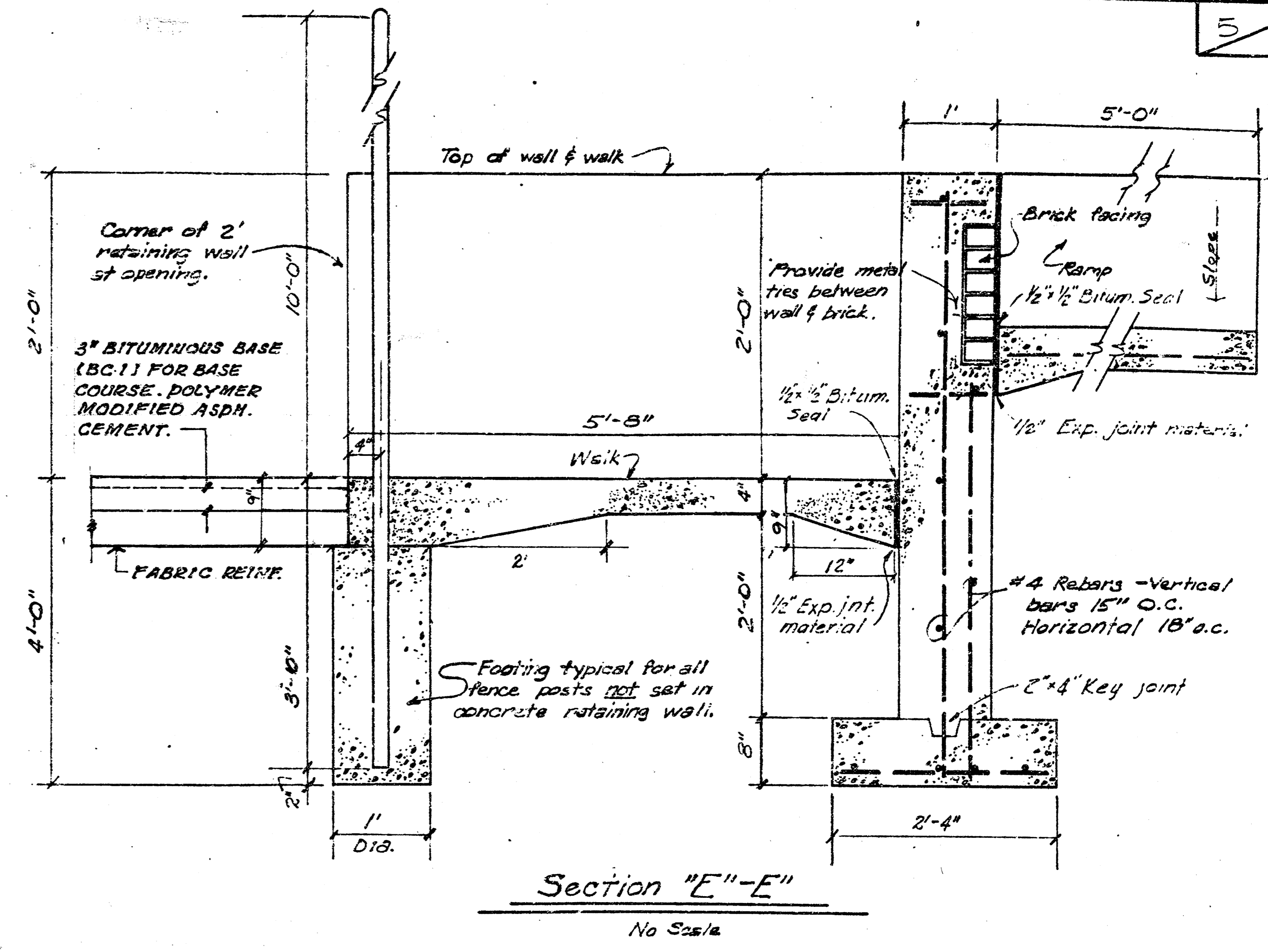
REINFORCED CONCRETE TENNIS COURTS		
BOARD OF PARK COMMISSIONERS WICHITA KANSAS		
DATE	DRAWN	SCALE
1-16-74	T.R.F.	NOTED



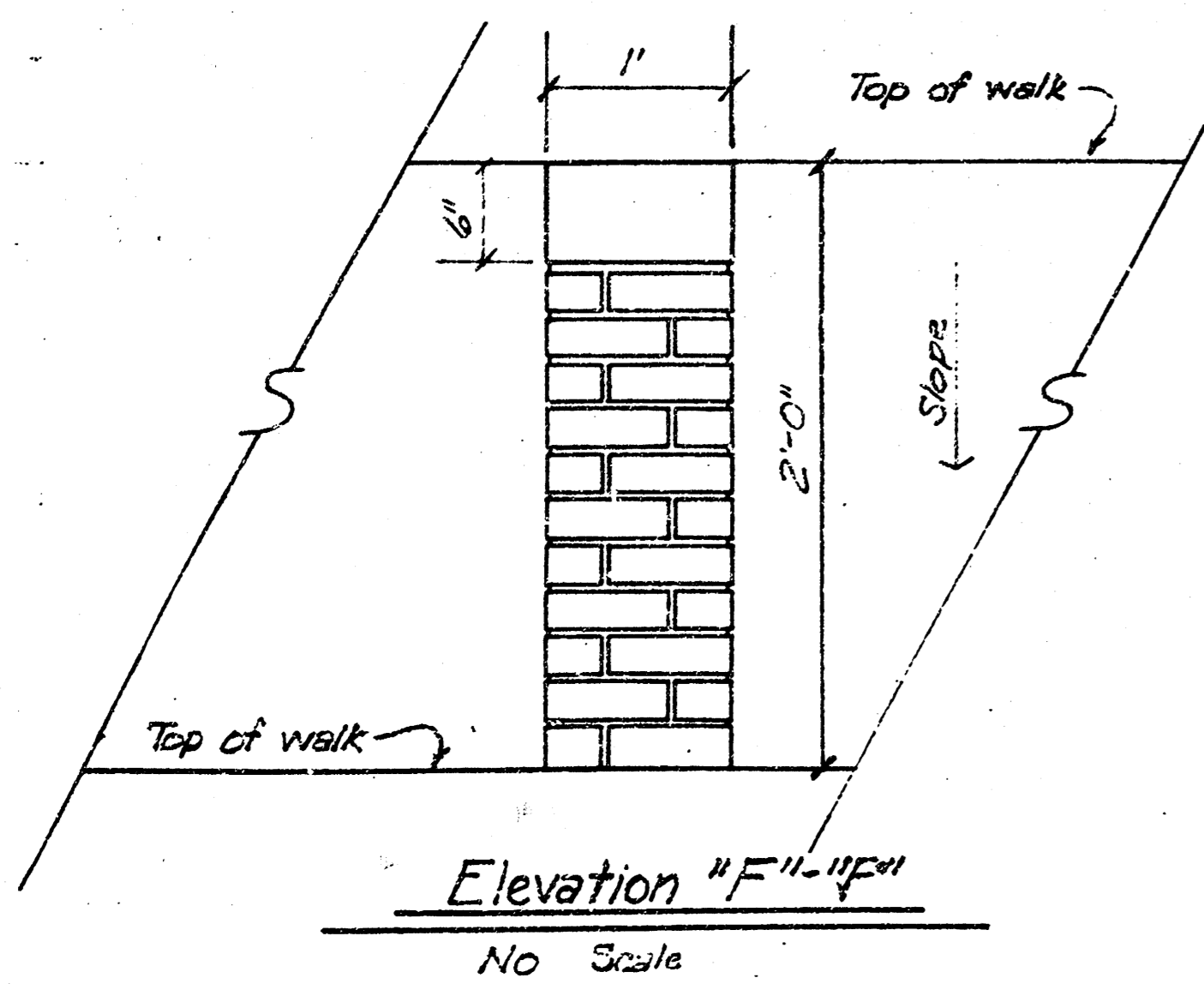
**Detail "C"**  
No scale.  
NET POST DETAIL



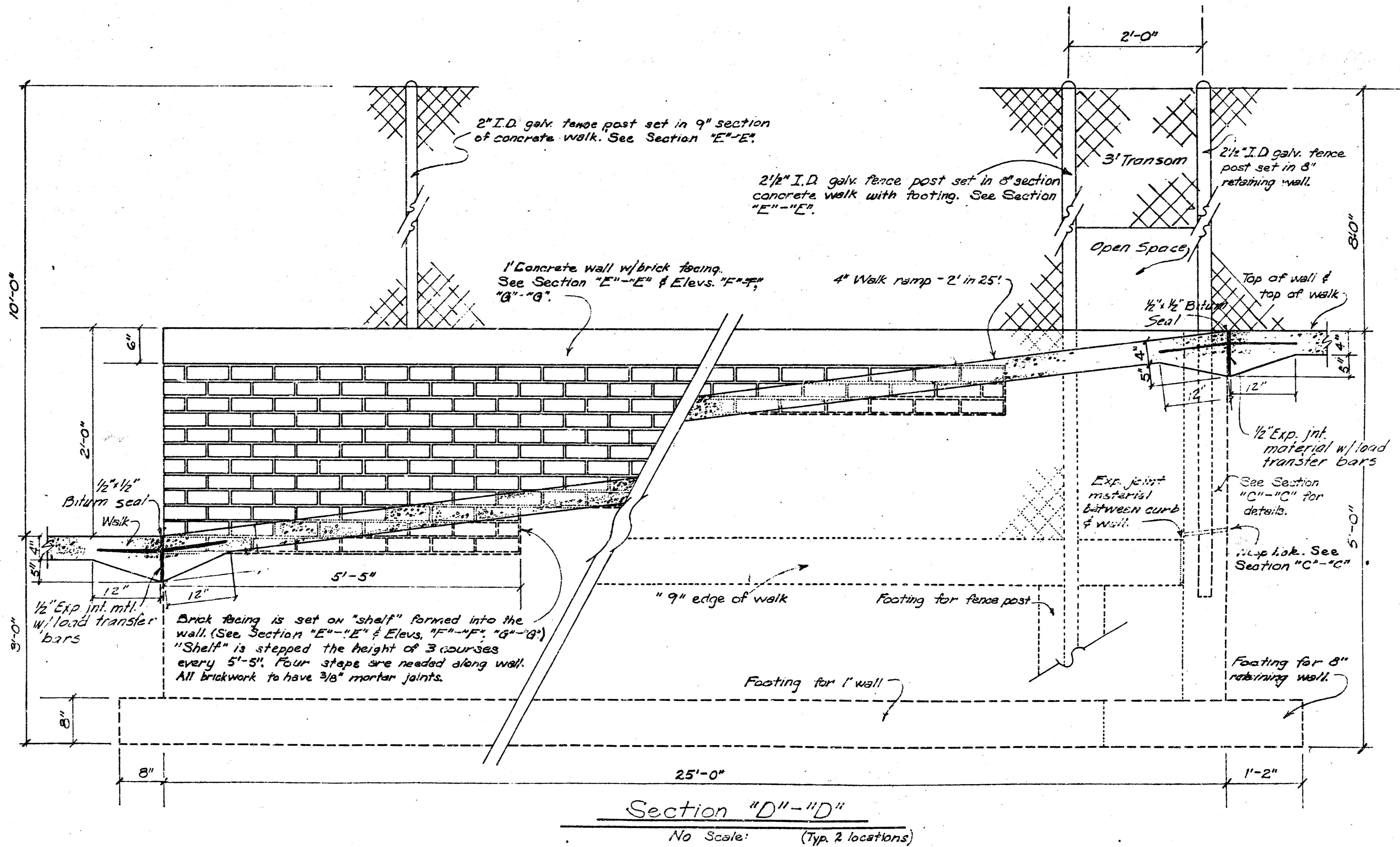
**Section "C"- "C"**  
No Scale



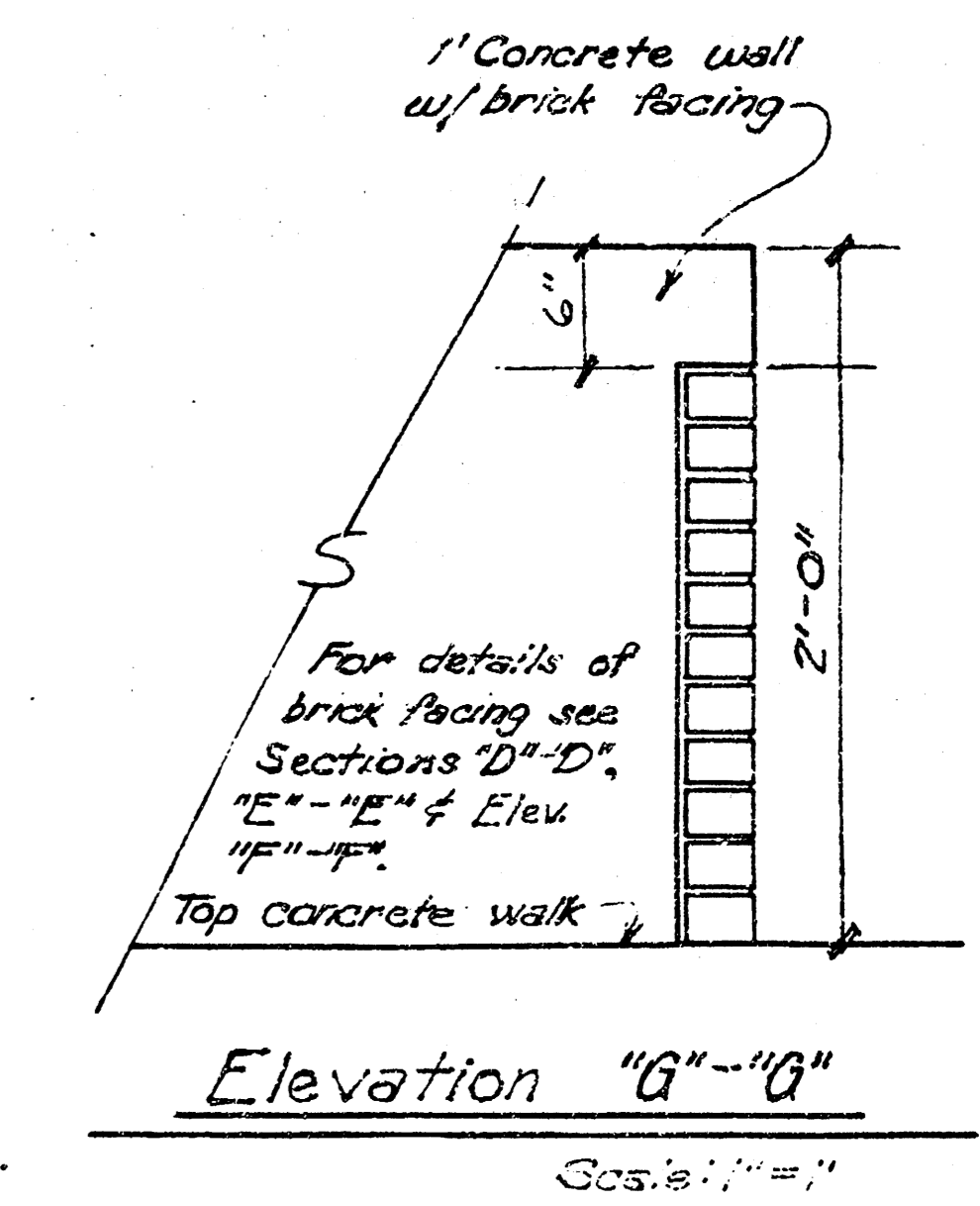
**Section "E"- "E"**  
No Scale



**Elevation "F"- "F"**  
No Scale



**Section "D"- "D"**  
No Scale (Typ. 2 locations)



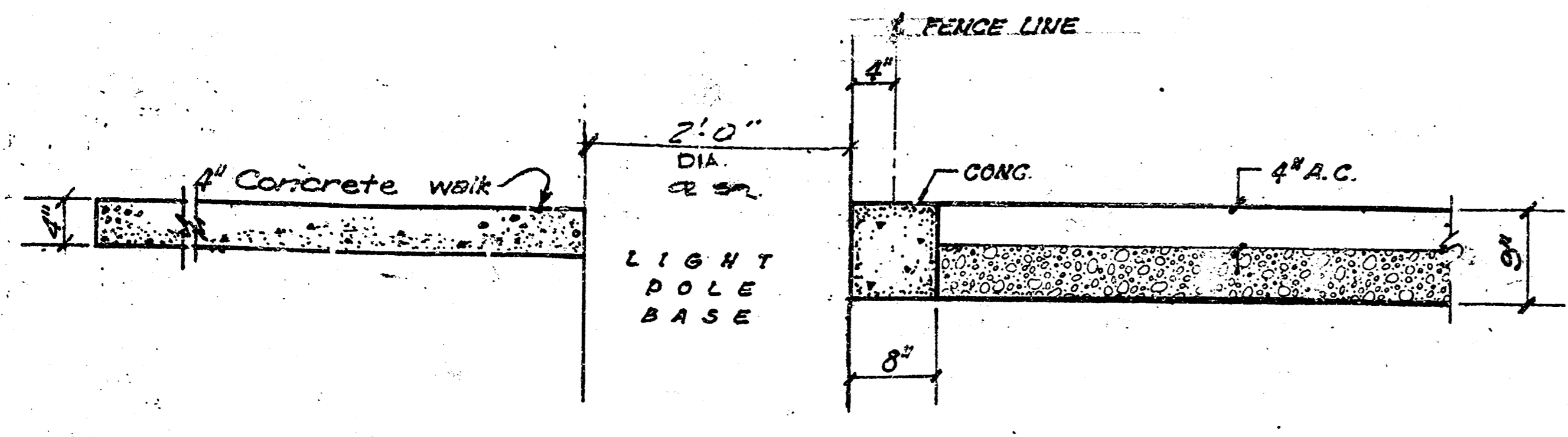
**Elevation "G"- "G"**  
Scale: 1/4" = 1'

NEW COURT CONSTRUCTION

**Tennis Courts - Details**

**EDGEMOOR PARK**

Date	Drawn	Scale
		1/4" = 1'



Section "A"-A"  
Scale: 1"=1'-0"

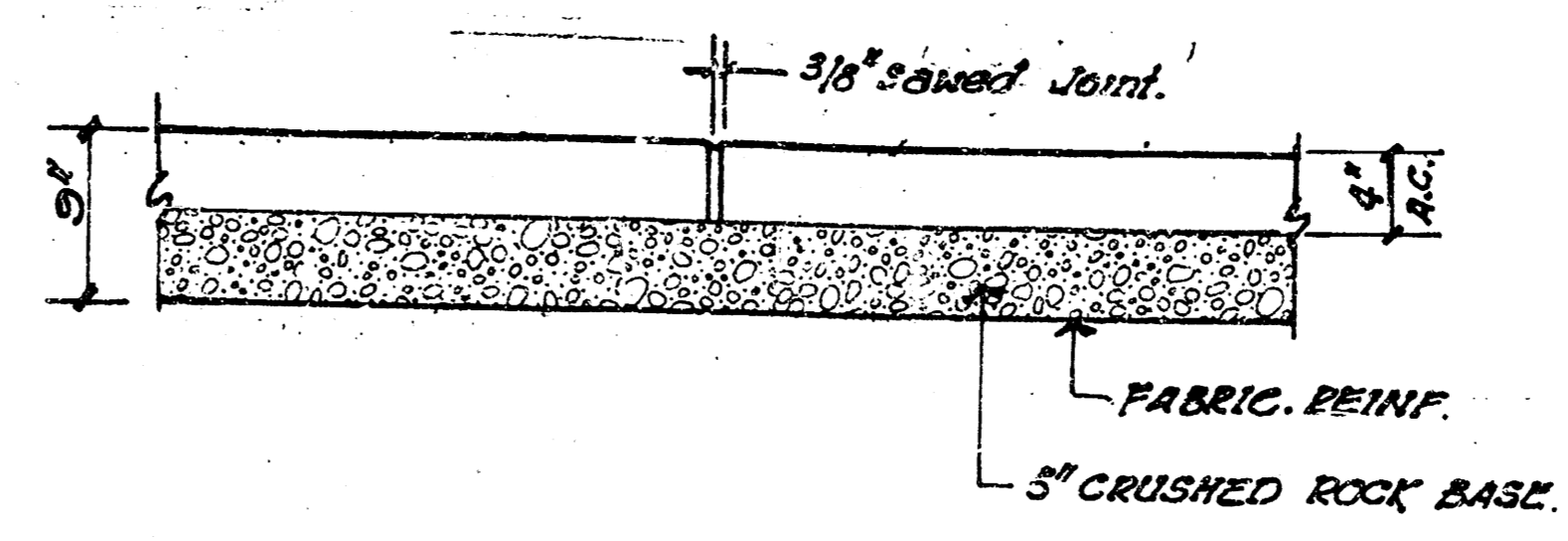
FABRIC REINFORCEMENT SHALL BE 2X 1100 GEORGRID AS MANUFACTURED BY TENSAR CORPORATION OR APPROVED EQUAL. FABRIC REINFORCEMENT SHALL BE INSTALLED IN ACCORDANCE WITH MANUFACTURER'S RECOMMENDATIONS. GRADED ROCK SHALL BE UNIFORMLY GRADED AND CONFORM TO THE FOLLOWING GRADATION.

PER CENT OF AGGREGATE RETAINED	
1/2"	0
3/4"	15-60
#4	40-80
#40	74-92
#200	4-12

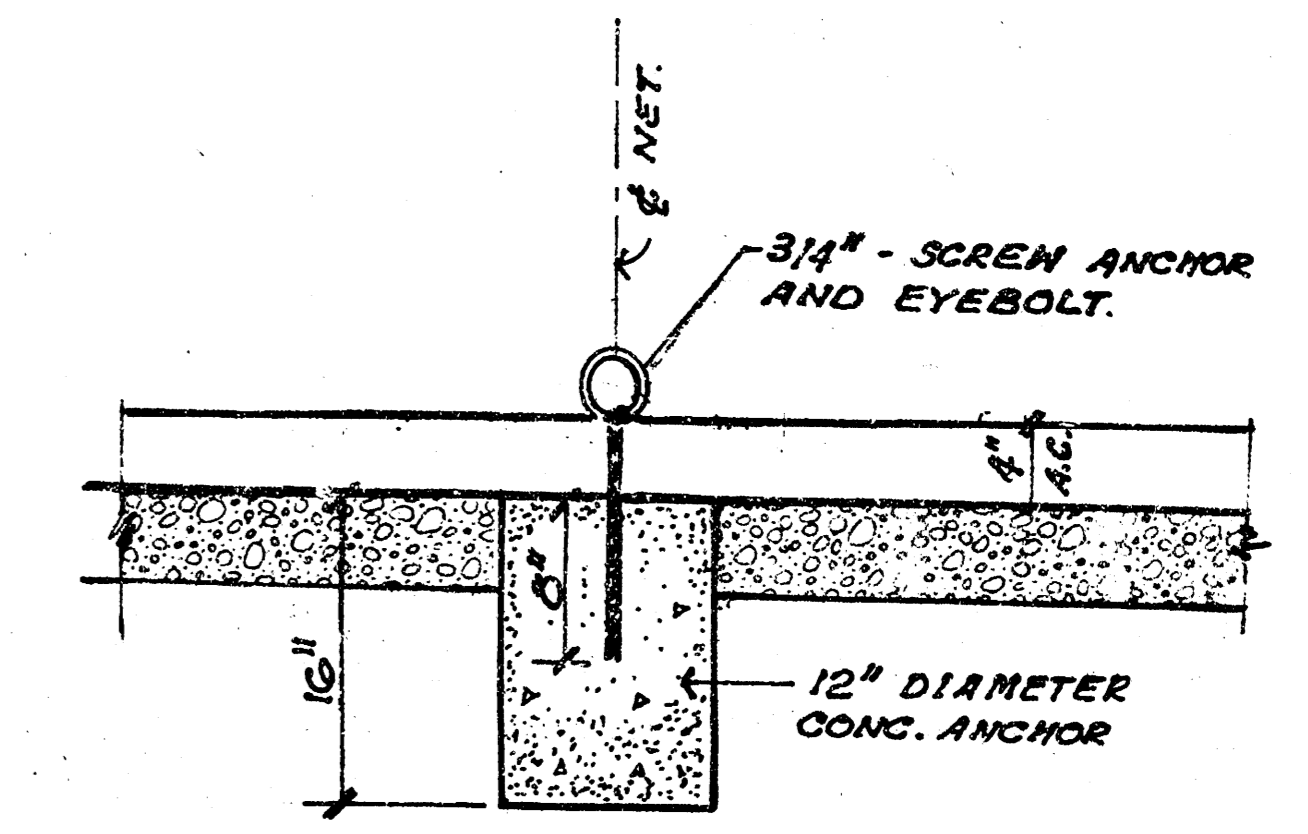
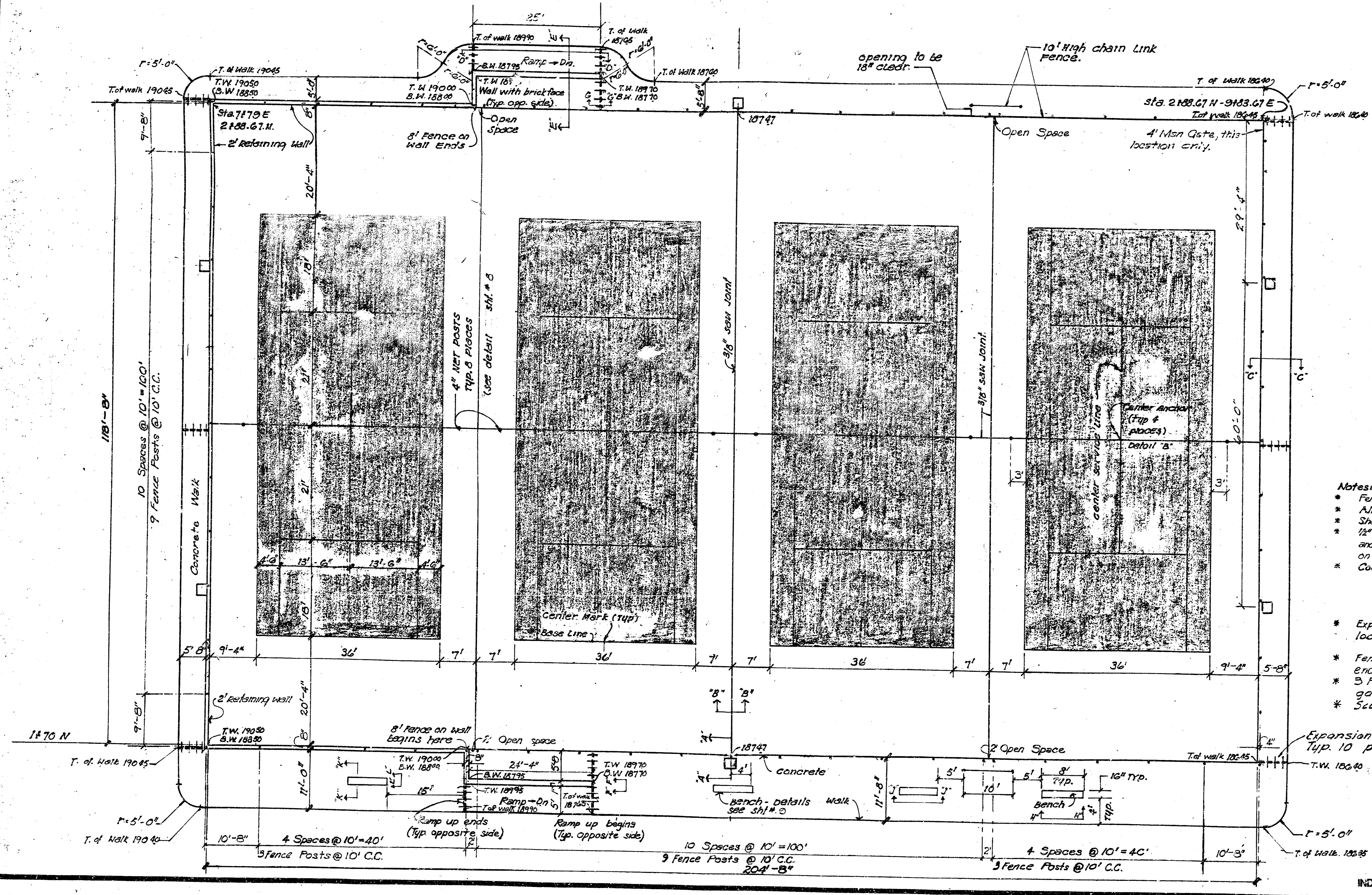
F.C.C. QUALITY SHALL BE THE SAME AS SPECIFIED FOR COARSE AGGREGATE FOR CONCRETE MIXES.

ROCK SHALL BE TO BE COMPACTED AND SMOOTHED WITH A STEEL FACED ROLLER PRIOR TO PLACEMENT OF ASPHALT. TACK COAT WILL NOT BE APPLIED TO ROCK BASE.

REINFORCED CRUSHED ROCK BASE WILL BE PAID FOR AT THE SQUARE YARD PRICE FOR 6" THICKNESS.



Section "B"-B"  
Scale: 1"=1'-0"



CENTER ANCHOR DETAIL  
Detail "B"  
Scale: 1"=1'-0"

- Notes:**
- \* Fence on wall is 8' high. Fence on walk is 10' high.
  - \* All corner & terminal fence posts shall be 2 1/2" inside diameter, galv.
  - \* Shaded area to be green. Rest of courts to be red. Ref. spec.
  - \* 1/2" Asphaltic expansion joint material to be placed between walk and all abutting concrete walks. Expansion Joints every 25' on all concrete slab work.
  - \* Court Marking:  
Center mark - 4" long by 2" wide from center of each base line into court.  
Center service line - 2" wide. All other lines - not less than 1" nor more than 2" wide, except base lines, which may be 4" wide.
  - \* Expansion joints in reinforced concrete walk are to be located as shown. Use load transfer expansion joints. (See Sht. # for detail).
  - \* Fence post spacing typical for each side and each end of court playing area.
  - \* 3 Foot Chain Link fence transom above each gate opening and 2 foot open space.
  - \* Score walk at tangent points @ 5'-0" o.c.

N

**Tennis Courts**  
**EDGEMOOR PARK**  
NEW COURT CONSTRUCTION

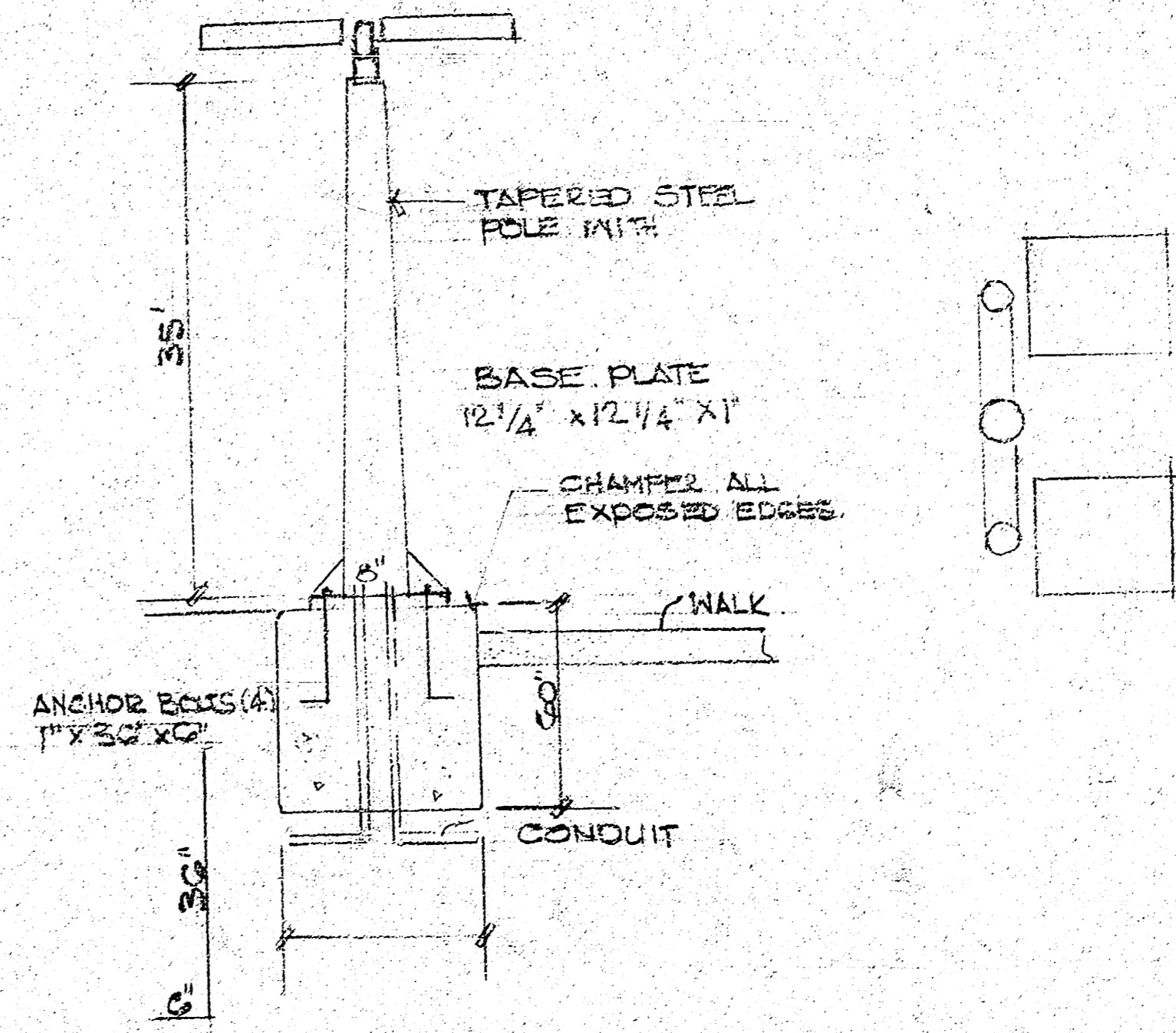
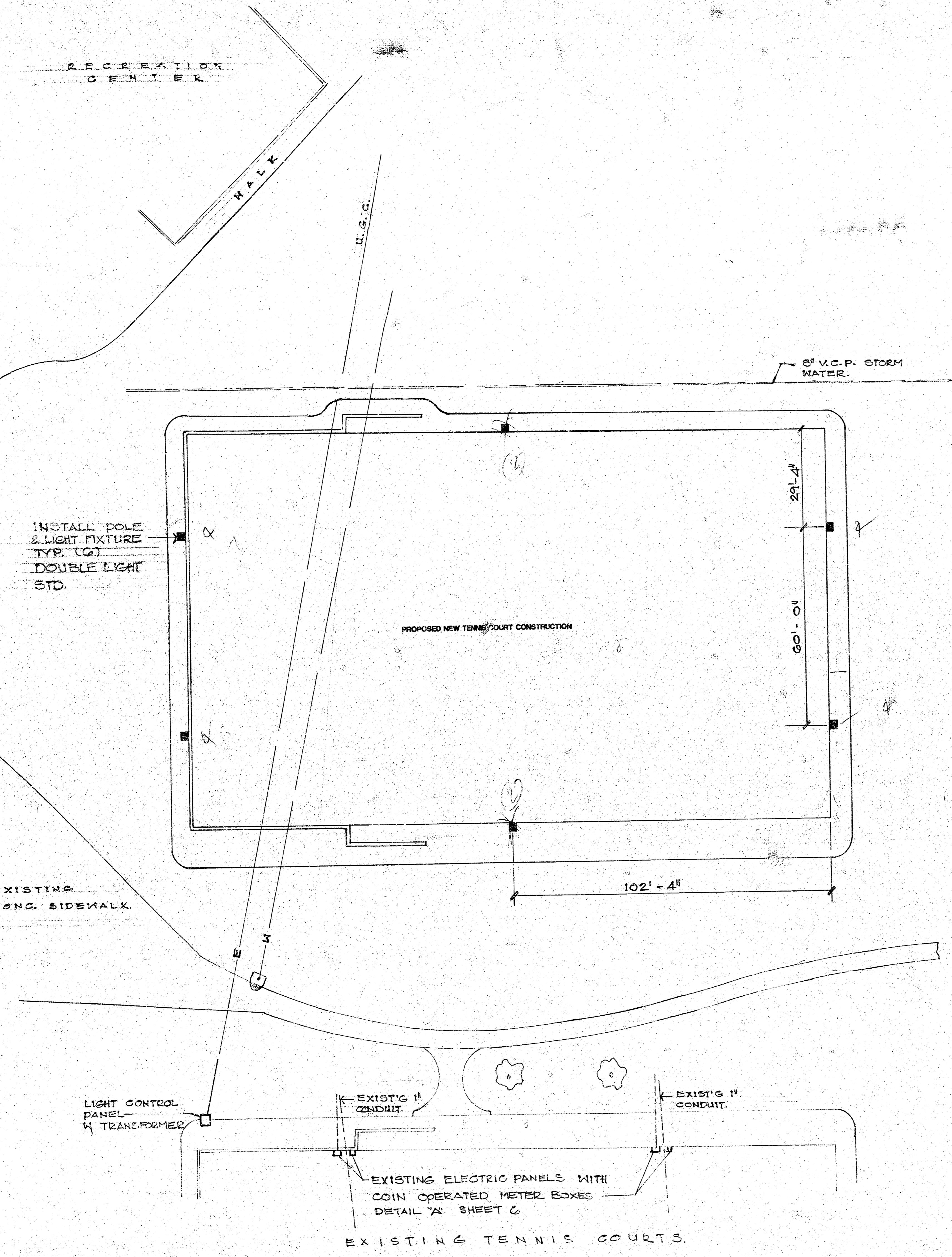
Date \_\_\_\_\_ Drawn \_\_\_\_\_ Scale 1"=1'-0"

INDEX NO. 785063



⊕ GENERAL NOTES ⊕

1. LIGHT CONTROL SWITCH PANEL TO BE INSTALLED IN RECREATION CENTER AT A LOCATION TO BE SPECIFIED BY THE ENGINEER. SWITCHES TO BE PASS & SEYMOUR AC 1 OR APPROVED EQUAL.
2. ALL ELECTRICAL WORK TO CONFORM TO CITY OF WICHITA ELECTRICAL CODE.
3. UNDER GROUND WIRING SHALL BE IN CONDUITS, AND 24" BELOW SURFACE.
4. EXACT LOCATION OF LIGHT CONTROL PANEL TO BE DETERMINED IN THE FIELD BY THE ENGINEER. LIGHT CONTROL PANEL SHALL BE SET ON CONCRETE PAD AS PER MANUFACTURERS INSTRUCTIONS.
5. LAMPS FOR LIGHT FIXTURES TO BE LUMAFIX LIGHT AN-44 57, 1000 MT 64 X 6V 236 CPA, WITH SLIP FILTER MOUNT.
6. ALL UNDERGROUND CONDUIT TO BE SCHEDULE 40 RIBBON P.V.C. PLASTIC, 2 1/2" MIN. DIA.
7. ALL CIRCUITS TO BE NO. 10, PROVIDE GREEN NO. 10 GROUNDING CONDUCTOR FOR EACH CONDUIT RUN.



ELECTRICAL PLAN

EDGEMOOR PARK  
NEW COURT CONSTRUCTION

SCALE:	APPROVED BY	DRAWN BY
DATE:		
		DRAWING NUMBER