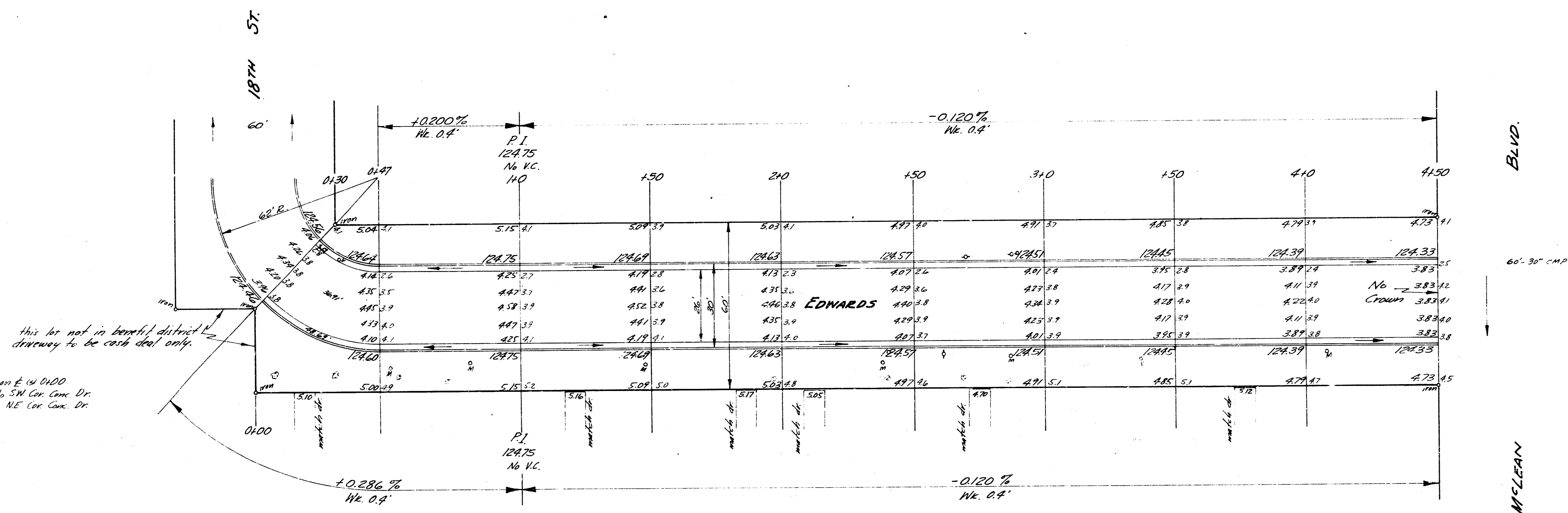
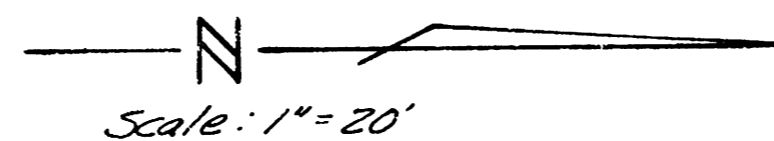


B.M. 12.11 S.W. Cor. Conc. perch. Ht. # 1851 N. Edwards
 B.M. 126.68 N.W. Cor. Conc. perch. Ht. # 1932 N. Edwards



EDWARDS
 S.L. LOT 7, BLOCK 3, MEADOWVALE
 ADDN. TO S.L. McLEAN BLVD.
 26-2-30 A.C.
 CITY OF WICHITA, KANSAS
 B.E. SMITH - CITY ENGINEER
 1957 PROJ. NO. C15-142