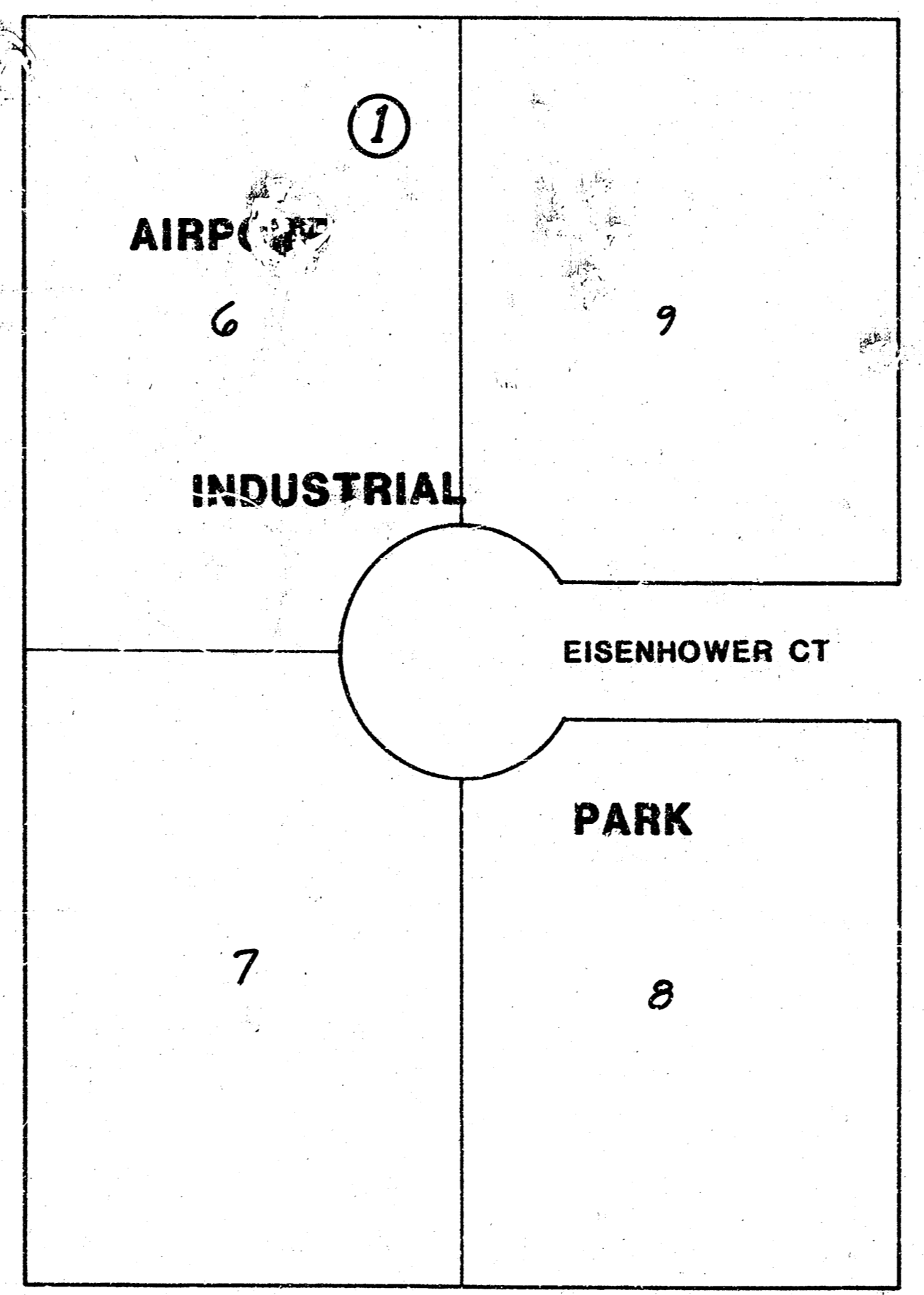
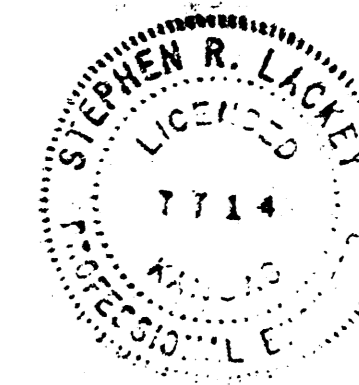


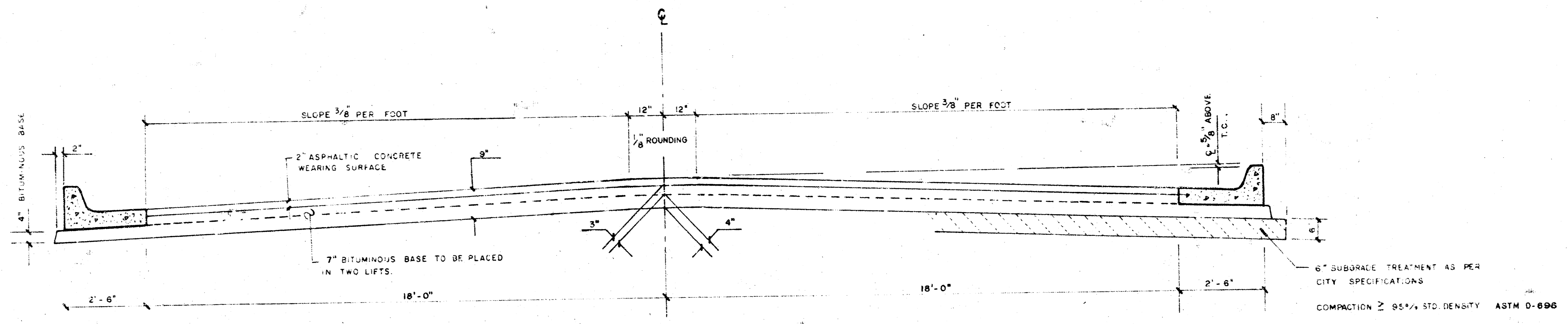
EISENHOWER COURT



2,145 S.Y. Manipulation



PROJECT DESCRIPTION		
W. L. EISENHOWER TO & INCLD. CUL-DE-SAC		
PROJECT NUMBER		
472 76 245 81145 000 000 001		
BOOK NO. <i>BR86</i>	APPROVED BY <i>[Signature]</i>	DATE <i>3-20-82</i>
DRAWN BY <i>K/ly</i>	REVISOR	REVISED
CITY OF WICHITA DEPARTMENT OF ENGINEERING		
DIRECTOR OF ENG. CITY ENGINEER R. W. BRUGGEMAN		SCALE



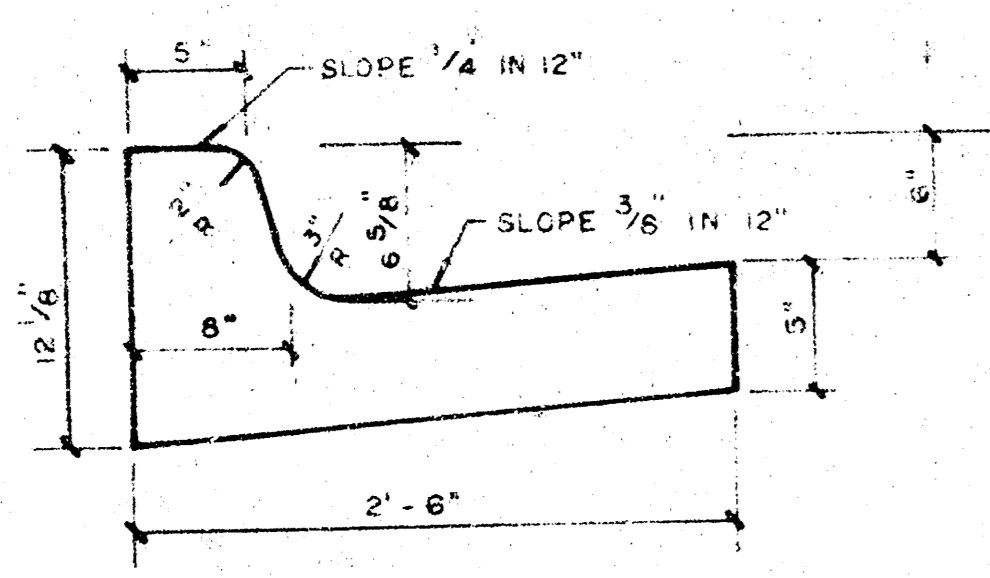
TYPICAL SECTION

4' ASPHALTIC CONCRETE PAVEMENT WITH BITUMINOUS BASE

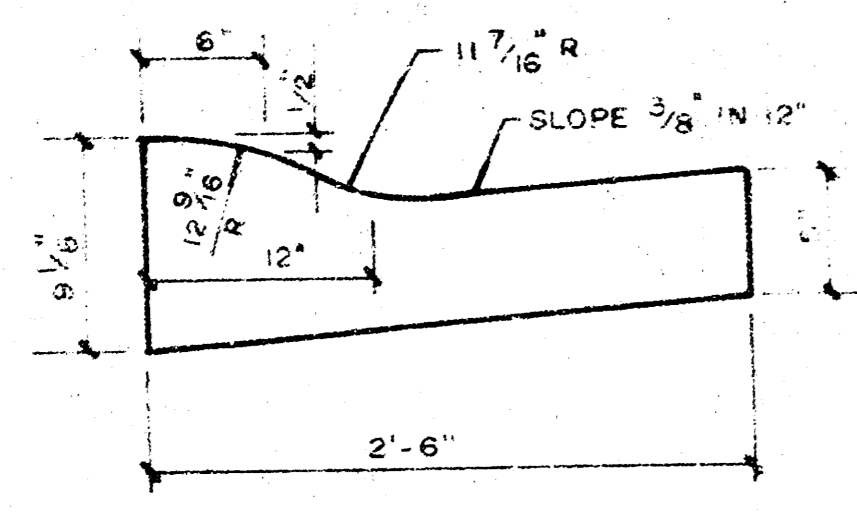
A TACK COAT OF EMULSIFIED ASPH(SS-IH or CSS-IH) SHALL BE APPLIED AT AN APPROXIMATE RATE 0.05 GALLONS PER SQ YD BETWEEN LIFTS OF ASPHALTIC MATERIALS WHEN ORDERED BY THE ENGINEER. TACK COAT WILL NOT BE PAID DIRECTLY AND SHALL BE CONSIDERED AS SUBSIDIARY TO PRICE BID FOR ASPHALTIC PAVEMENT. BITUMINOUS BASE AND ASPHALTIC CONCRETE WEARING SURFACE SHALL BE PLACED WITH A LAYDOWN MACHINE HAVING AUTOMATIC CONTROLS FOR CROWN AND GRADE. CONSTRUCTION JOINTS IN EACH LIFT SHALL BE STAGGERED A MINIMUM DISTANCE OF 1' WITH JOINTS IN PRECEDING LIFTS AND PLACED SUCH THAT A JOINT WILL BE CONSTRUCTED ON THE CENTERLINE IN THE TOP LIFT.

THE A.C. PAVEMENT BETWEEN THE COMBINED CURB & GUTTER SHALL BE PAID AS SQ YDS 9" A.C. PAVEMENT (7" BITUMINOUS BASE). THE BITUMINOUS BASE UNDER THE COMBINED CURB AND GUTTER SHALL BE PAID AS SQ YDS 4" BITUMINOUS BASE.

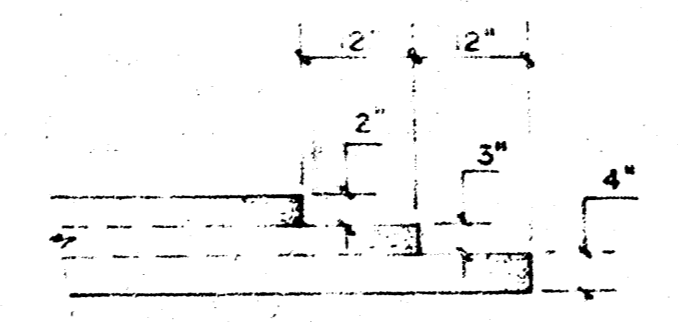
COMBINED CURB & GUTTER



ROLL TYPE CURB & GUTTER



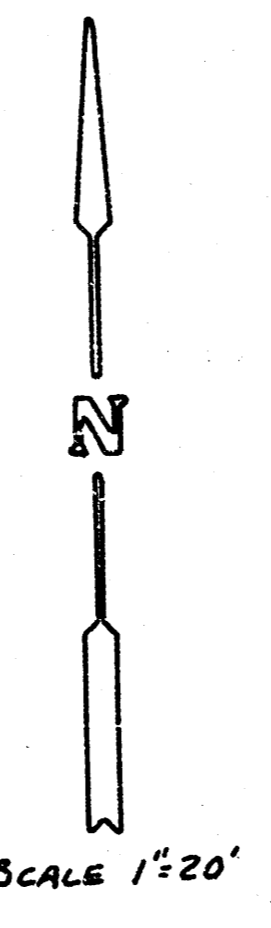
DETAIL OF TRANSVERSE CONSTRUCTION JOINTS



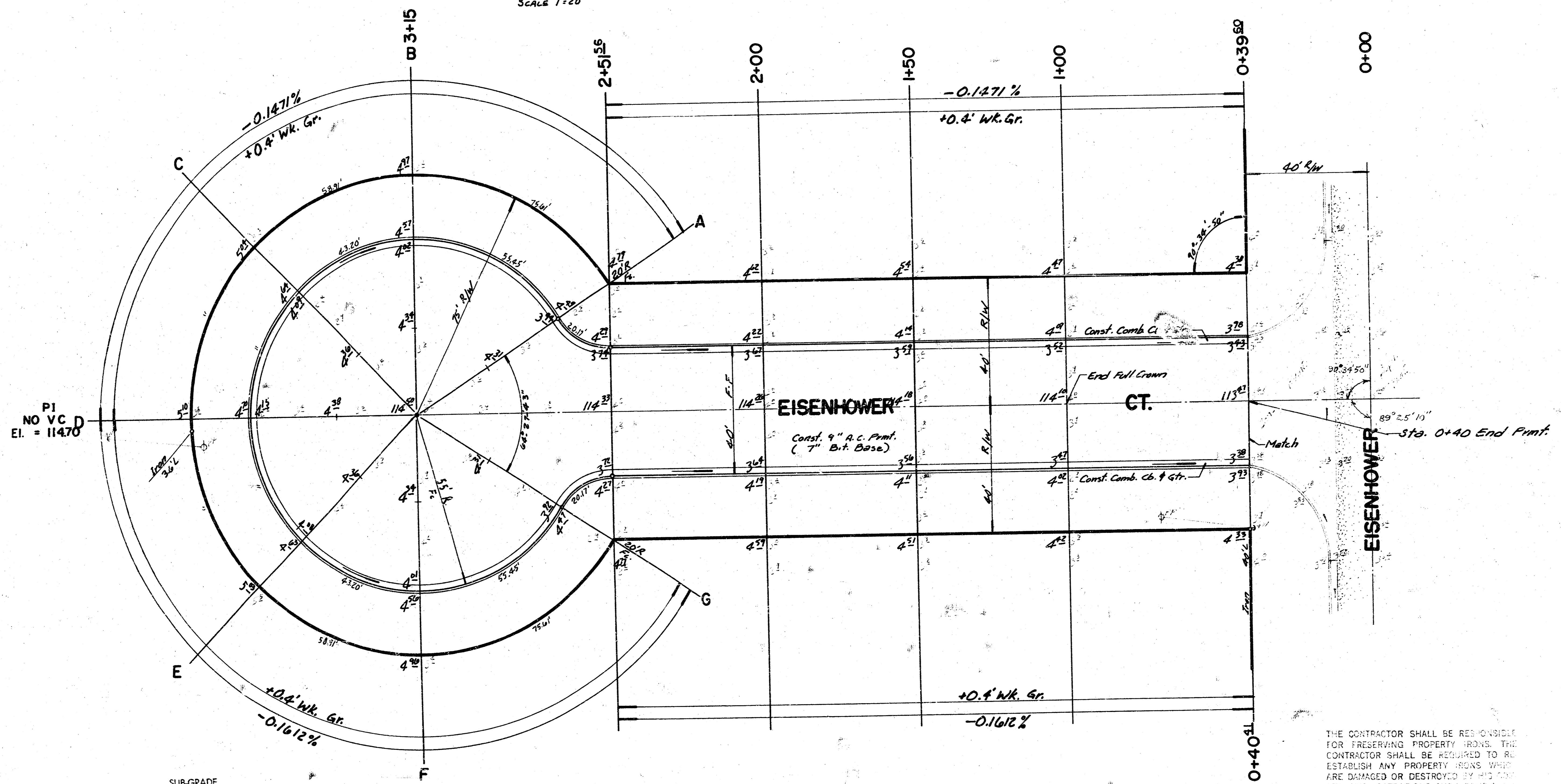
TRANSVERSE CONSTRUCTION JOINTS SHALL BE CONSTRUCTED IN FLEXIBLE BASE PAVEMENTS AT LOCATIONS WHERE PAVEMENT TEMPORARILY ENDS TO FACILITATE FUTURE PAVEMENT CONSTRUCTION AS SHOWN BY DETAIL. THE COST OF CONSTRUCTING THE TRANSVERSE CONSTRUCTION JOINTS SHALL NOT BE MEASURED OR PAID FOR DIRECTLY BUT SHALL BE INCLUDED IN THE BID PRICE FOR SQUARE YARDS OF A.C. PAVEMENT.

BM = 110.57 ~ City Std. at Hoover & May 48' E & 5' S of 1/4 Sec. Cor.
 BM = 111.77 ~ Top of "T" shaped metal fc. post 12" above ground on E May
 & approx. 30' W of W.L. Eisenhower (4' Metal guardpost at BM)
 BM = 113.47 ~ "D" Top of Cb. W Side Eisenhower 50' S of E Eisenhower

E 15 E Eisenhower Ct.



SURVEYED BY BREQ
 DRAWN BY K/eg



SUB-GRADE
 TYPE OF SUB-GRADE TREATMENT SHALL BE DETERMINED BY THE FIELD ENGINEER. SUB-GRADE TREATMENT MAY CONSIST OF LIME TREATMENT, CEMENT TREATMENT, SUB-GRADE MODIFICATION, OR ANY COMBINATION THEREOF.

SECTION	EARTHWORK		
	EXCAVATION	COMP. FILL	BORROW
10'	265.3 C.Y.	7.3 C.Y.	746.9 C.Y.
TOTAL	265.3 C.Y.	8.0 C.Y.	821.6 C.Y.

THE CONTRACTOR SHALL BE RESPONSIBLE FOR PRESERVING PROPERTY BOUNDS. THE CONTRACTOR SHALL BE REQUIRED TO RE-ESTABLISH ANY PROPERTY BOUNDS WHICH ARE DAMAGED OR DESTROYED BY HIS CONSTRUCTION OPERATIONS. SUCH PROPERTY BOUNDS SHALL BE RE-ESTABLISHED BY A LICENSED SURVEYOR OR A LICENSED PROFESSIONAL ENGINEER IN ACCORDANCE WITH STATE LAWS.

PROJECT DESCRIPTION
EISENHOWER CT.
 W.L. EISENHOWER TO & INCLD. CUL-DE-SAC
 PROJECT NUMBER
 472 76 245 81145 000 000 001

