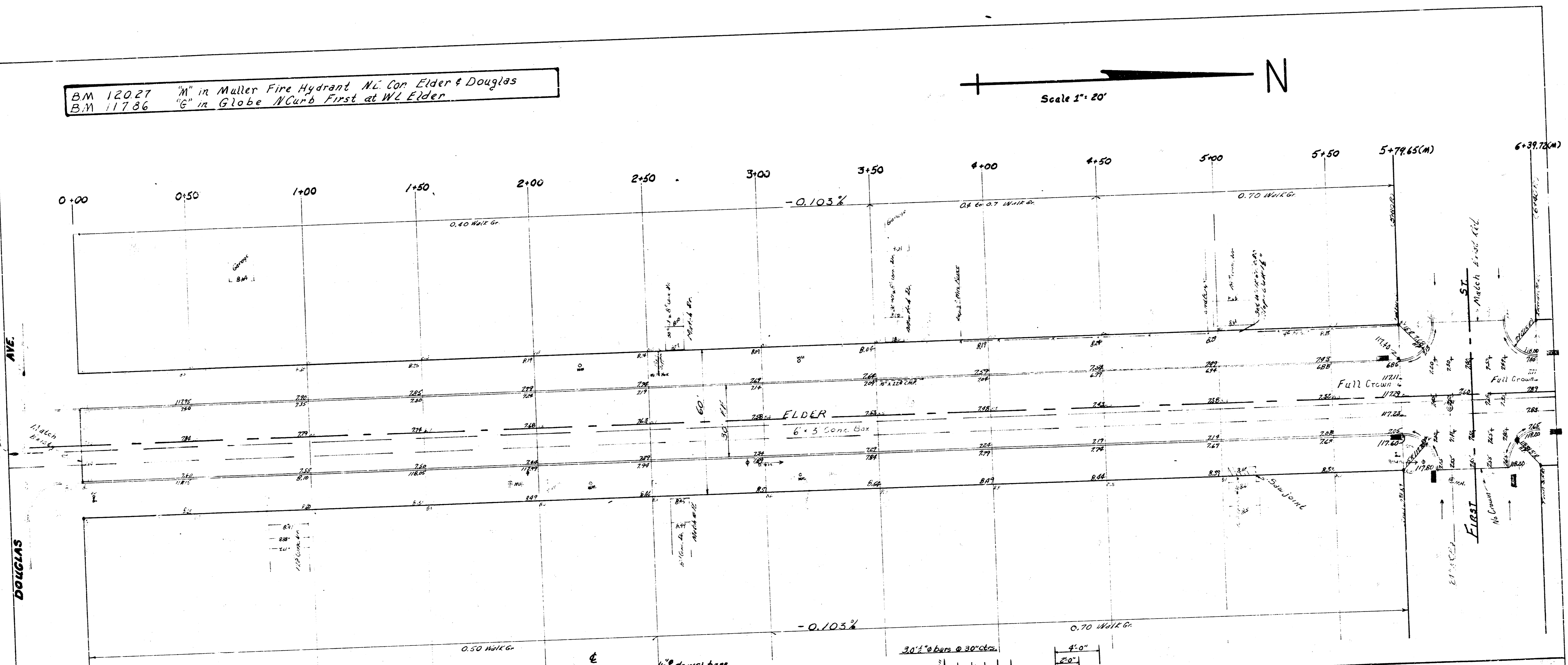
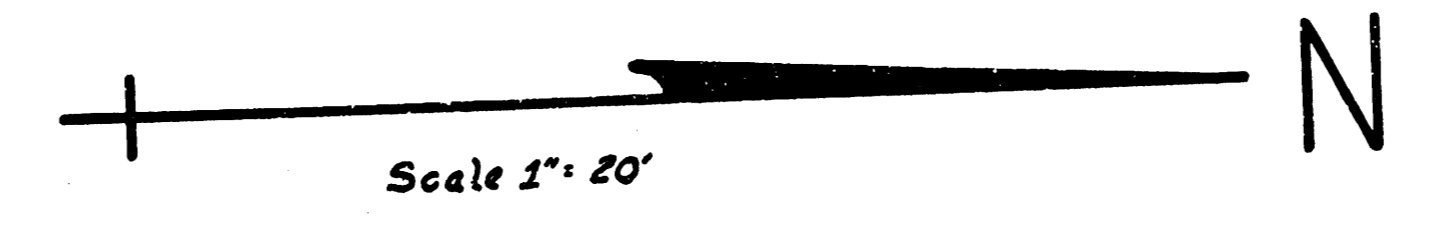
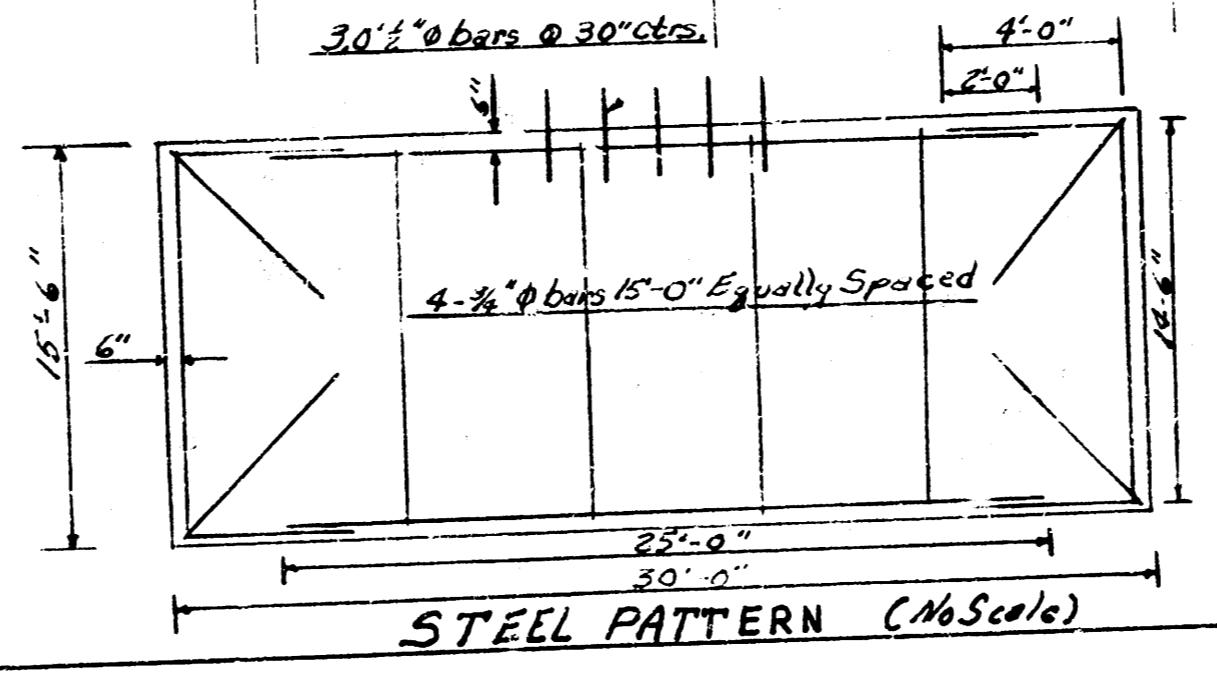
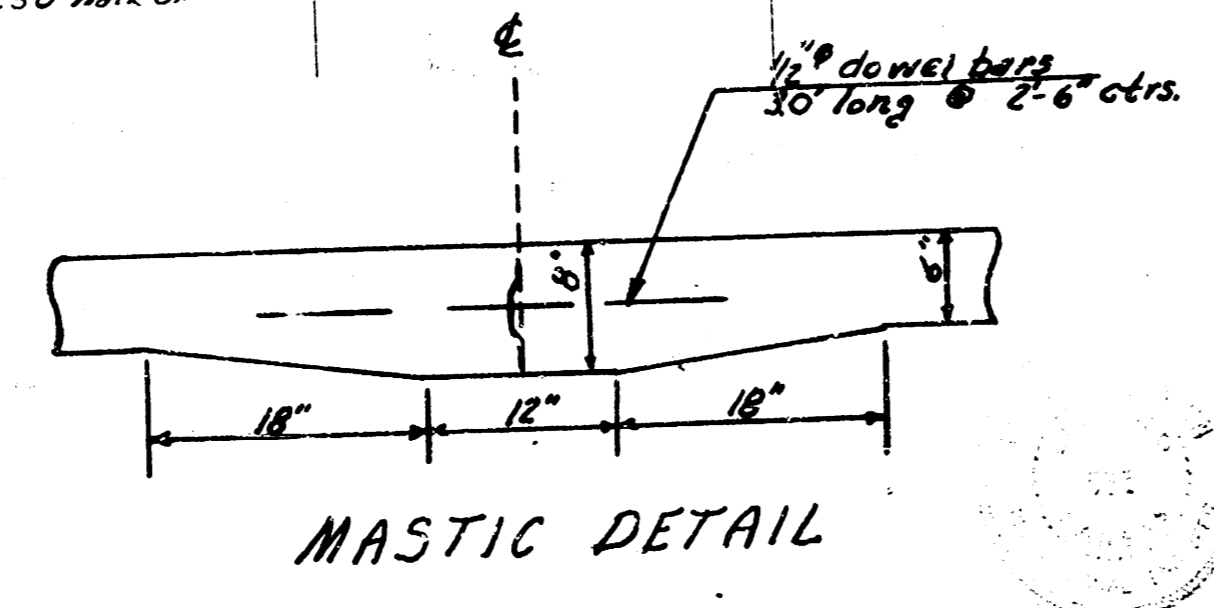


BM 12027 1" in Muller Fire Hydrant N.E. Cor. Elder & Douglas  
 B.M. 11786 6" in Globe N'Carb First at W. Elder



| EXCAVATION      |       |          |
|-----------------|-------|----------|
| PROPERTY        | CITY  |          |
| Cu. Yds. 2734.9 | 429.5 |          |
| +10% 273.5      | 42.5  |          |
| Totals 3008.4   | 472.0 | Cu. Yds. |



1/7

**ELDER STREET**  
 N.L. DOUGLAS TO SL. THIRD  
**30' CONC. & GB.**  
 CITY OF WICHITA, KANSAS  
 B.E. SMITH CITY ENGINEER  
 DATE APRIL 1963 PROJ. CIB-180



B.M. 12041 6" in Globe South End Radius S.W. Cor. Elder & Third

