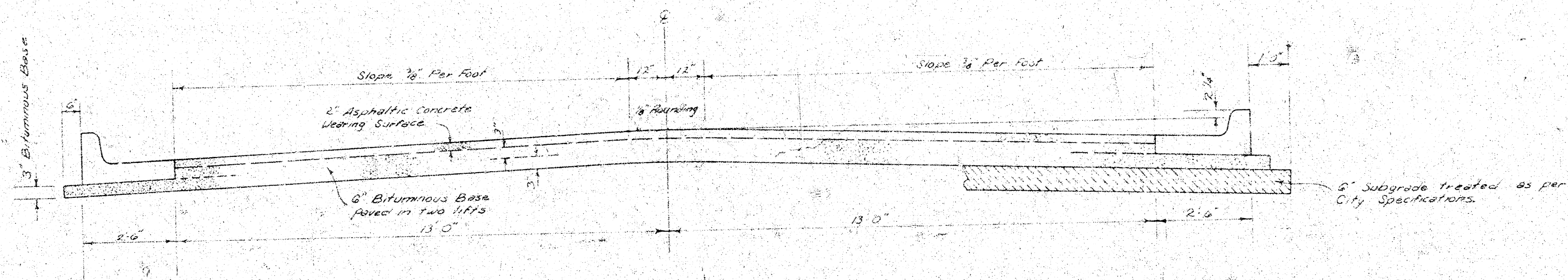


**ELDER St. and EDMINSTER St.**

from NL 9th st. to WL Compton

Proj. no. DAKS577010

472-76-245-80492-000-000-001



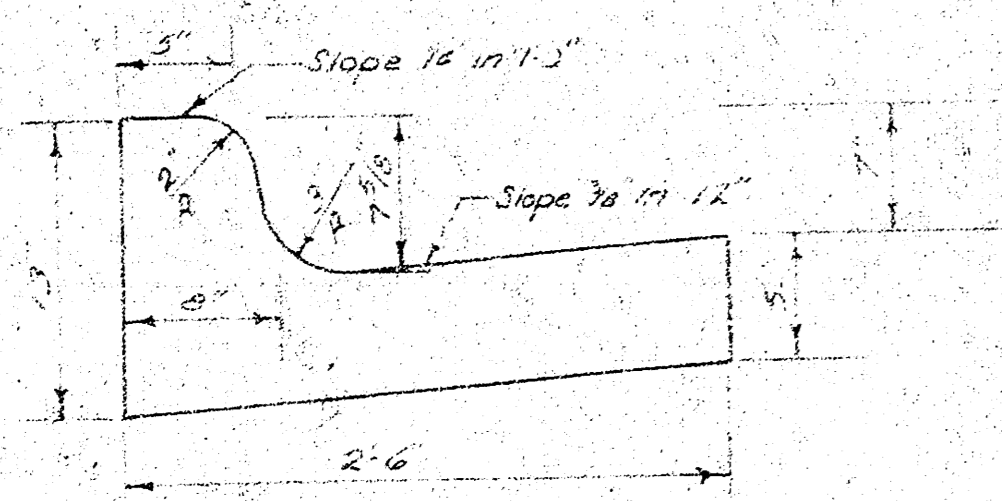
**TYPICAL SECTION**

**31' ASPHALTIC CONCRETE PAVEMENT WITH BITUMINOUS BASE**

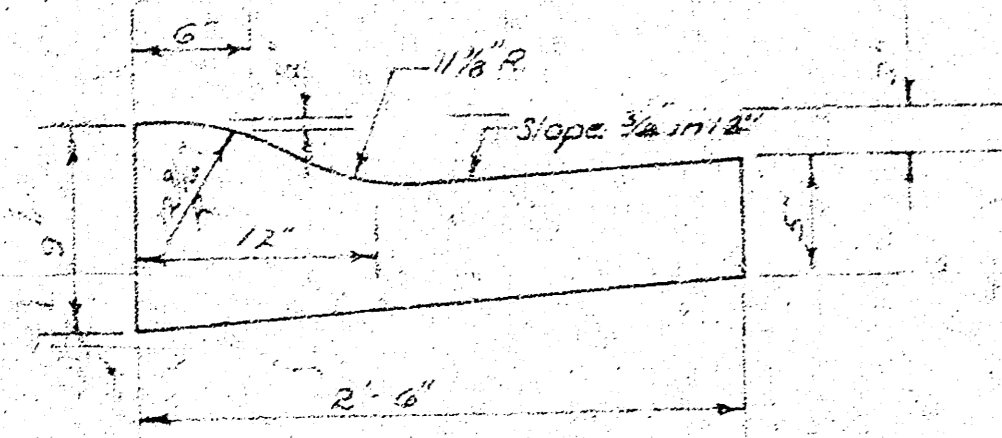
A TACK COAT OF EMULSIFIED ASPHALT (SS-1H) SHALL BE APPLIED AT AN APPROXIMATE RATE OF 0.05 GALLONS PER SQ. YD. BETWEEN LIFTS OF ASPHALTIC MATERIALS WHEN ORDERED BY THE ENGINEER. TACK COAT WILL NOT BE PAID FOR DIRECTLY AND SHALL BE CONSIDERED AS SUBSIDIARY TO PRICE BID FOR ASPHALTIC PAVEMENT. BITUMINOUS BASE AND ASPHALTIC CONCRETE WEARING SURFACE SHALL BE PLACED WITH A LAYDOWN MACHINE HAVING AUTOMATIC ELECTRONIC CONTROLS FOR CROWN AND GRADE. CONSTRUCTION JOINTS IN EACH LIFT SHALL BE STAGGERED A MINIMUM DISTANCE OF 1' WITH JOINTS IN PRECEDING LIFTS AND SUCH THAT A JOINT WILL BE CONSTRUCTED ON THE PAVEMENT CENTERLINE IN THE TOP LIFT.

*The A.C. pavement between the Comb. Curb & Gutter shall be paid as Sec. 105. B' A.C. Pavement (6\"/>*

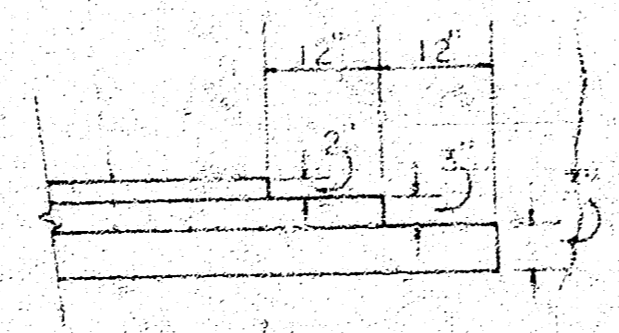
COMBINED CURB & GUTTER



ROLL TYPE CURB & GUTTER



**DETAIL OF TRANSVERSE CONSTRUCTION JOINTS**



TRANSVERSE CONSTRUCTION JOINTS SHALL BE CONSTRUCTED IN FLEXIBLE BASE PAVEMENTS AT LOCATIONS WHERE PAVEMENT TEMPORARILY ENDS TO FACILITATE FUTURE PAVEMENT CONSTRUCTION AS SHOWN BY DETAIL. THE COST OF CONSTRUCTING THE TRANSVERSE CONSTRUCTION JOINTS SHALL NOT BE MEASURED OR PAID FOR DIRECTLY BUT SHALL BE INCLUDED IN THE BID PRICE FOR SQUARE YARDS OF ASPHALTIC CONCRETE PAVEMENT.

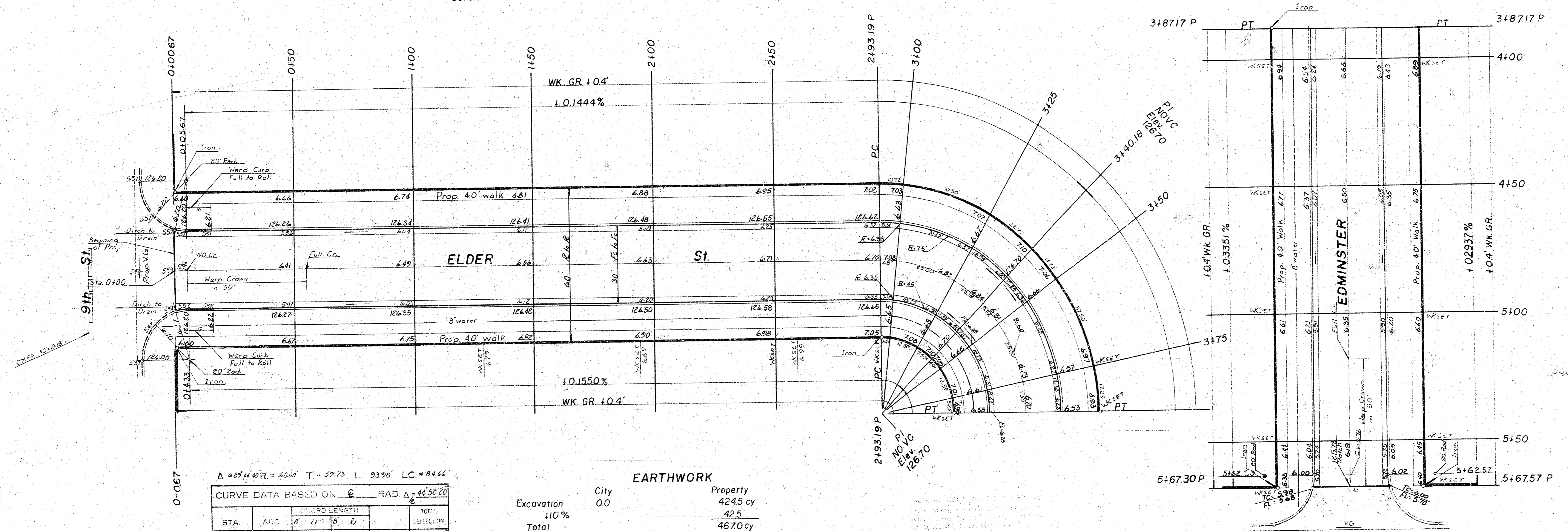
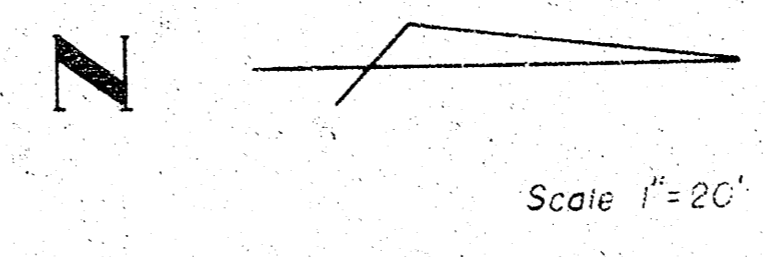
**CITY OF WICHITA, KANSAS**

DEPARTMENT OF PUBLIC WORKS — ENGINEERING  
R. W. LINN CITY ENGINEER

DATE \_\_\_\_\_ PROJ. NO. 472-76-245-80492-000-000-001

BM 126.15 W. Side Pole SE corner of Elder and 9th st. N.  
 BM 126.29 City Std. 34'E. and 42'S. of C both Hoover and 9th st. N.  
 B is C of Elder and Edminster

Construct ROLL-TYPE Curb and Gutter on this project



$\Delta = 85^\circ 44' 40''$ ,  $R = 6000'$ ,  $T = 59.73'$ ,  $L = 93.90'$ ,  $LC = 84.66'$   
 $\Delta = 44^\circ 52' 20''$

CURVE DATA BASED ON C					
STA.	ARC	CHORD	CHORD	CHORD	DEFLECTION
		$\theta$	$\theta$	$\theta$	
2193.19					0°00'00"
3100	6.81	2.42	4.20	3'15.06	3'15.06
3125	25.00	34.33	15.31	11'56.12	15'11.18
3140.18	15.18	20.94	2.34	7'14.52	22'26.10
3150	2.82	13.58	6.06	4'41.20	27'07.30
3175	25.00	34.33	15.31	11'56.12	39'03.42
3187.17	12.17	16.61	7.49	5'48.38	44'52.20

$Del = \frac{m}{11} = 28.6479$

EARTHWORK		
	City	Property
Excavation	00	4245 cy
110%		425
Total		4670 cy
Compact. Fill	00	66.6 cy
110%		6.7
Total		73.3 cy
Manipulation	2080.6 cy	

- Notes
- Trenation Curb and Gutter to be paid as Roll Type Curb and Gutter.
  - Ditch to drain to existing ditch, Ditch to be incidental to project, Install 40"x18"x11" CMPA, intersection return to be graveled surface.

Construct no more than 6'-20' drives on this project

CONCRETE  
 ALL CONCRETE SHALL BE  
 PLACED AND FINISHED BY THE CONTRACTOR.  
 SUBGRADE SHALL BE PREPARED AND TREATED  
 WITH A COURSE OF 4" OF LIME TREATMENT,  
 CEMENT TREATMENT, OR GRADE MODIFICATION,  
 OR ANY COMBINATION OF THESE.

COMPTON St.

ELDER St. and EDMINSTER St.  
 from N.L. 9th st. to W.L. Compton st.  
 Proj. no. DAK5577010  
 472-76-245-80492-000-000-001