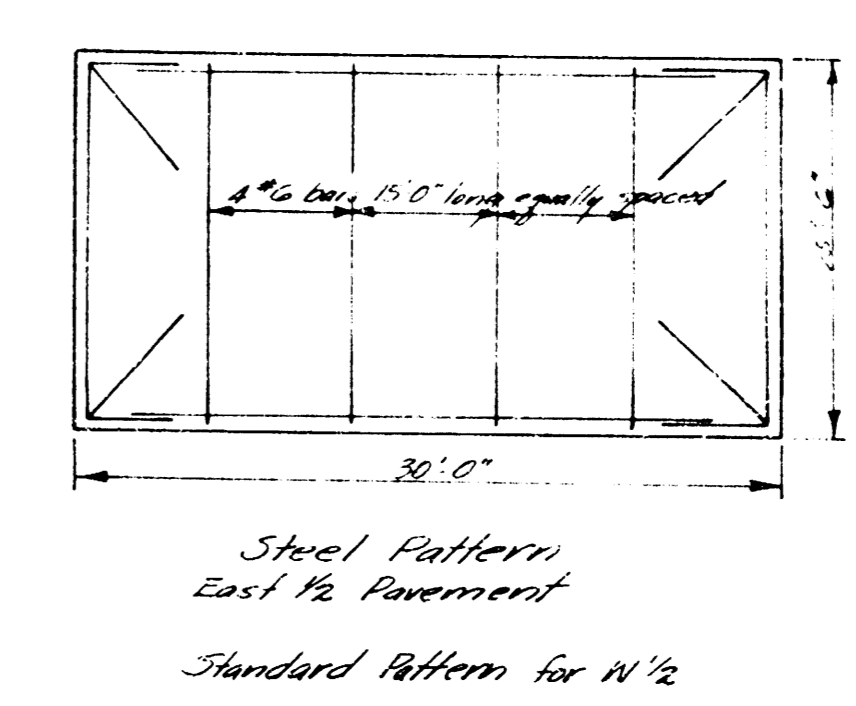
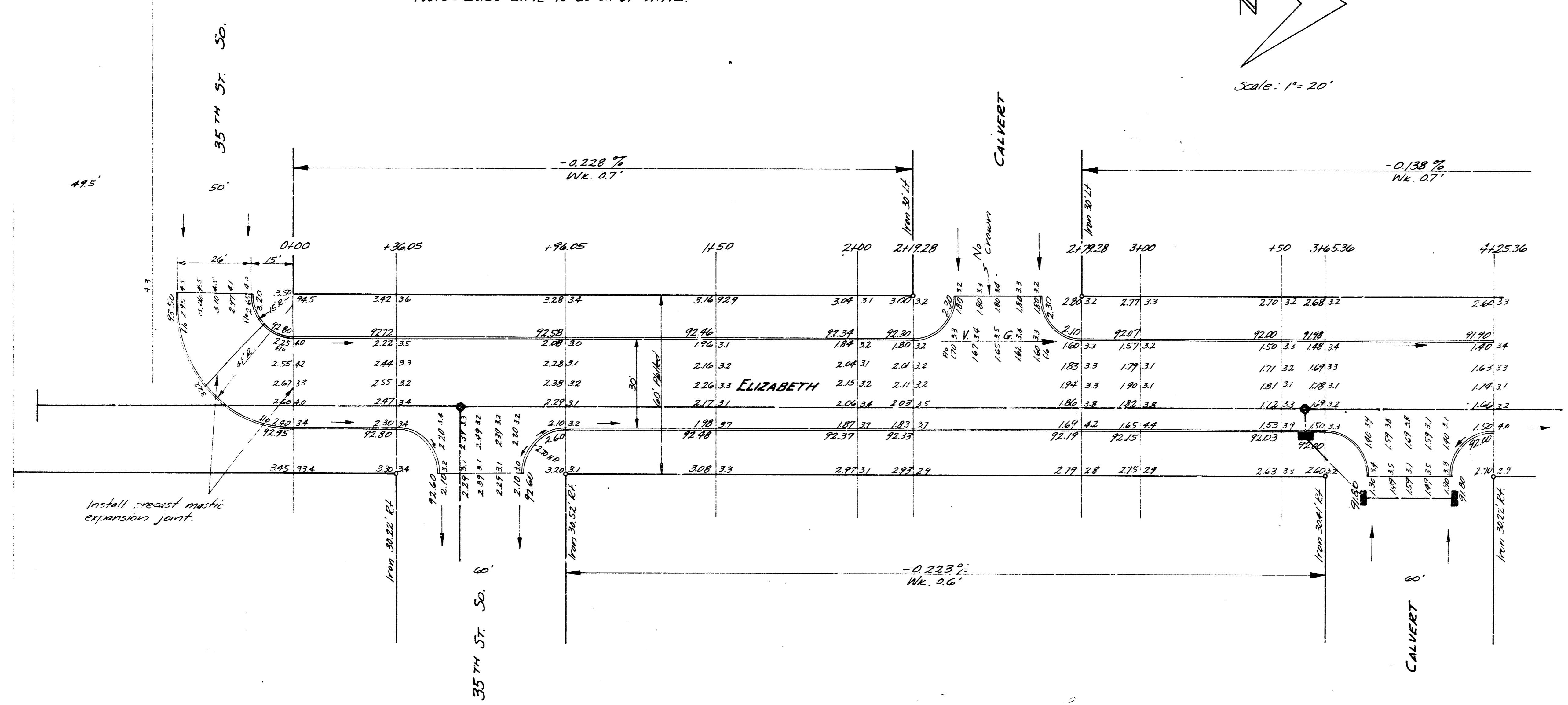
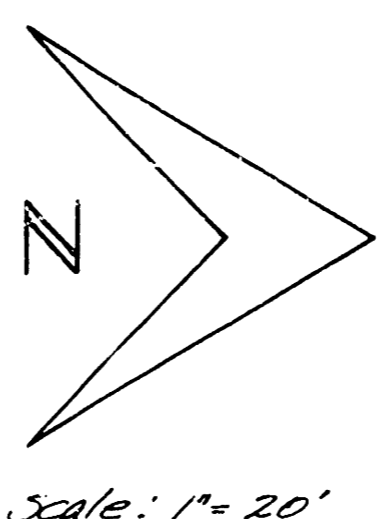


B.M. 44.44 N.E. Cor. Conc. Pierc. Ho. #1523 W. Calvert

Note: Base Line is 30' E. of W.P.L.

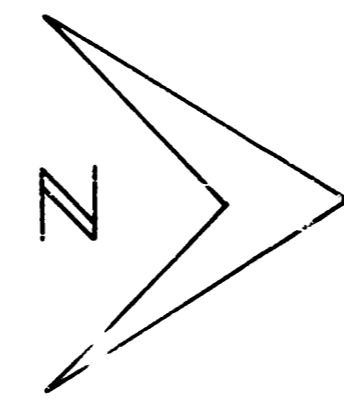


ELIZABETH
S.L. 35TH ST. SO. IN JENKINS 2ND ADD^{ON} TO
N.L. 34TH ST. SO. IN JENKINS 2ND ADD^{ON}.
30' CONC. & CO.
CITY OF WICHITA, KANSAS
B.E. SMITH CITY ENGINEER
AUG. 1956 PROJ. NO. 116-107

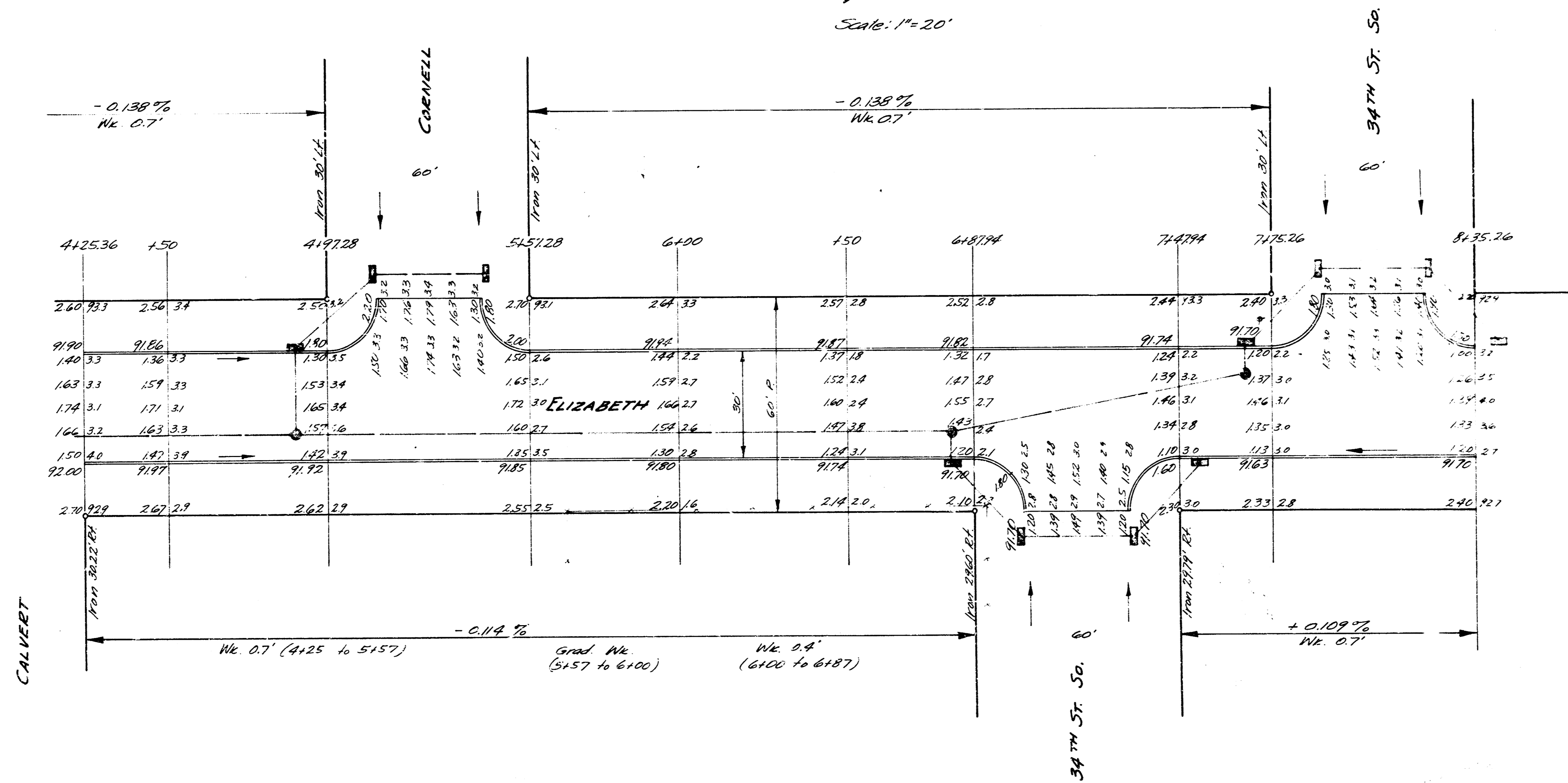
1/2

Sheet 138A V
City of Wichita

B.M. 9494 N.E. Cor. Conc. patch No. #1523 W. Culvert
 Note: Base line is 30'E. of W.P.L.



Scale: 1"=20'



ELIZABETH AVE.
 PROJ. No. C16-107

2
 2