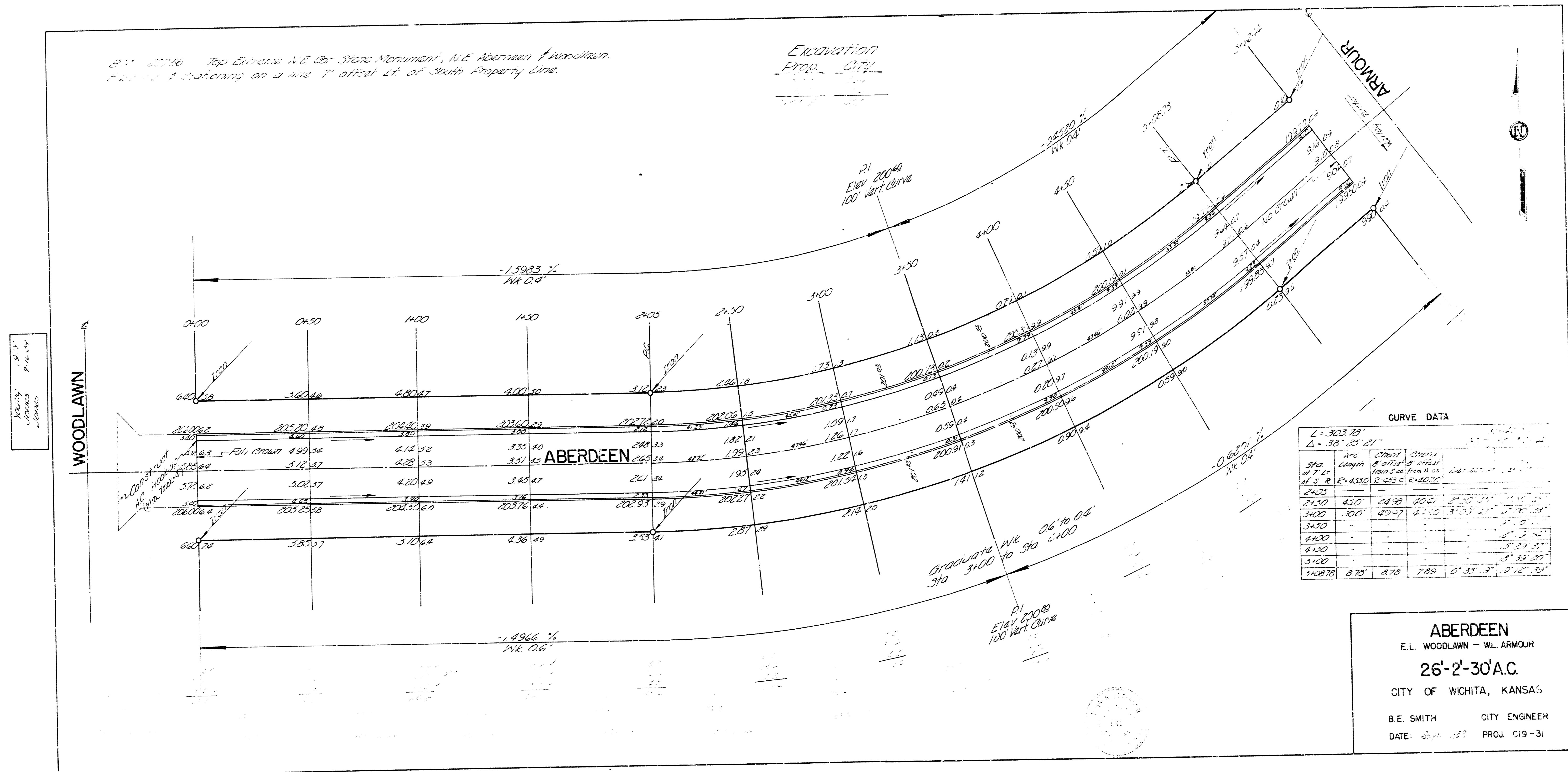


26'-2'-30" Top Elevation NE Corner Monument, N.E. Aberdeen & Woodlawn.
 Proposed widening on a line 7' offset LT. of South Property Line.

EXHIBITION
 PROJ. CITY
 1977



CURVE DATA

| Station | AVG | CHORD | CHORD |
|---------|--------|--------|--------|
| | Length | to PVI | to PVI |
| PI | to PVI | to PVI | to PVI |
| 2+05 | | | |
| 2+50 | 45.0' | 14.98' | 40.0' |
| 3+00 | 50.0' | 15.12' | 34.88' |
| 3+50 | | | |
| 4+00 | | | |
| 4+50 | | | |
| 5+00 | | | |
| 3+00 | 8.78' | 8.78' | 7.83' |

ABERDEEN
 E.L. WOODLAWN - W.L. ARMOUR
26'-2'-30"A.C.
 CITY OF WICHITA, KANSAS
 B.E. SMITH CITY ENGINEER
 DATE: 12-1-77 PROJ. C19-31