

STREET IMPROVEMENTS

ALEXANDER ST.

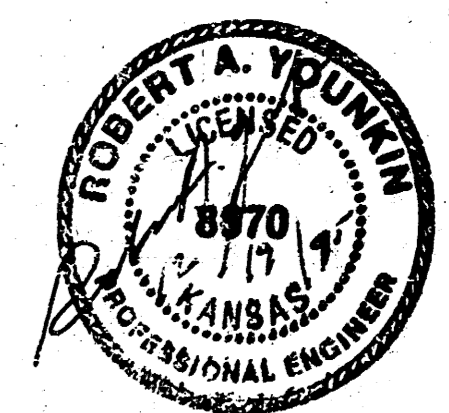
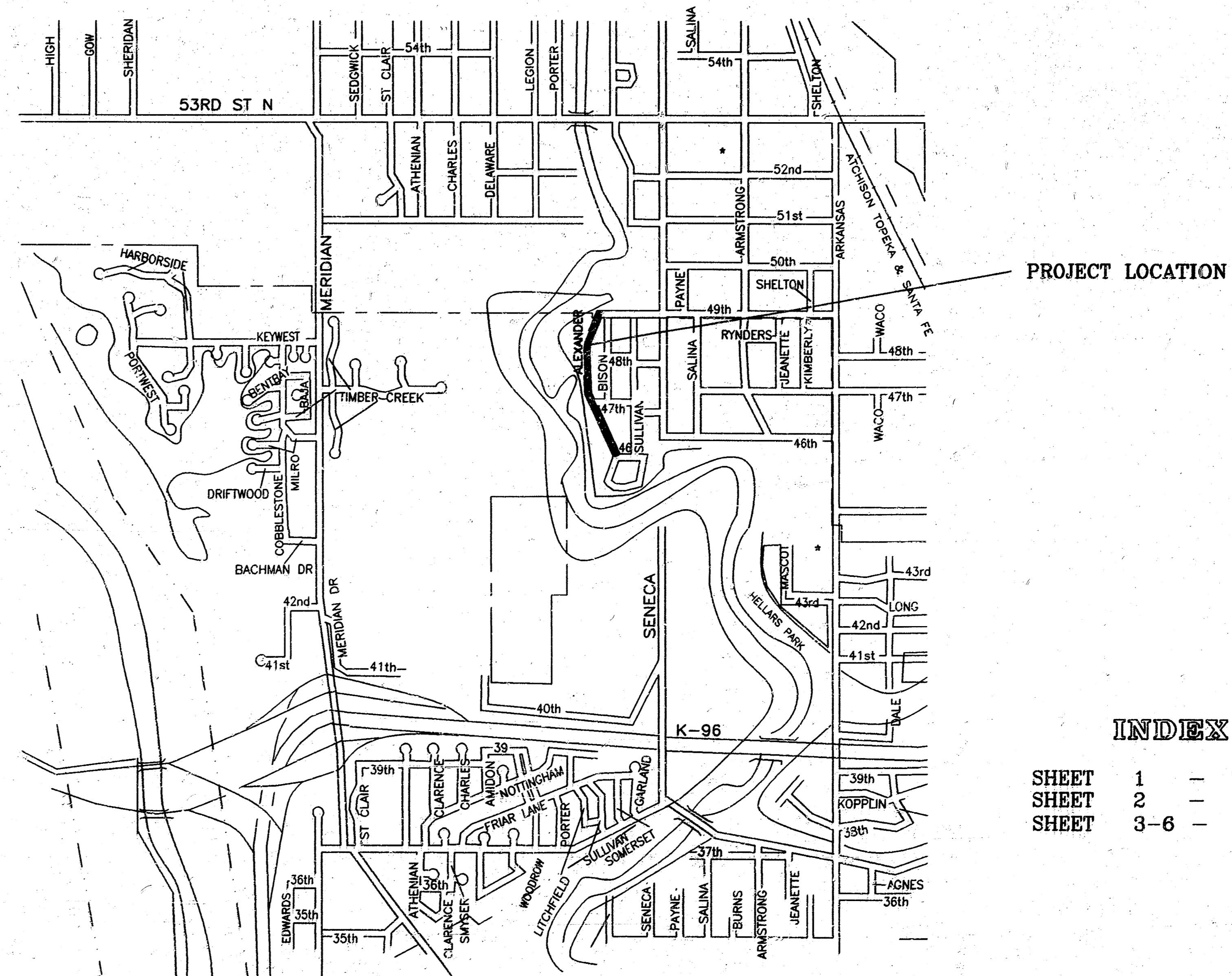
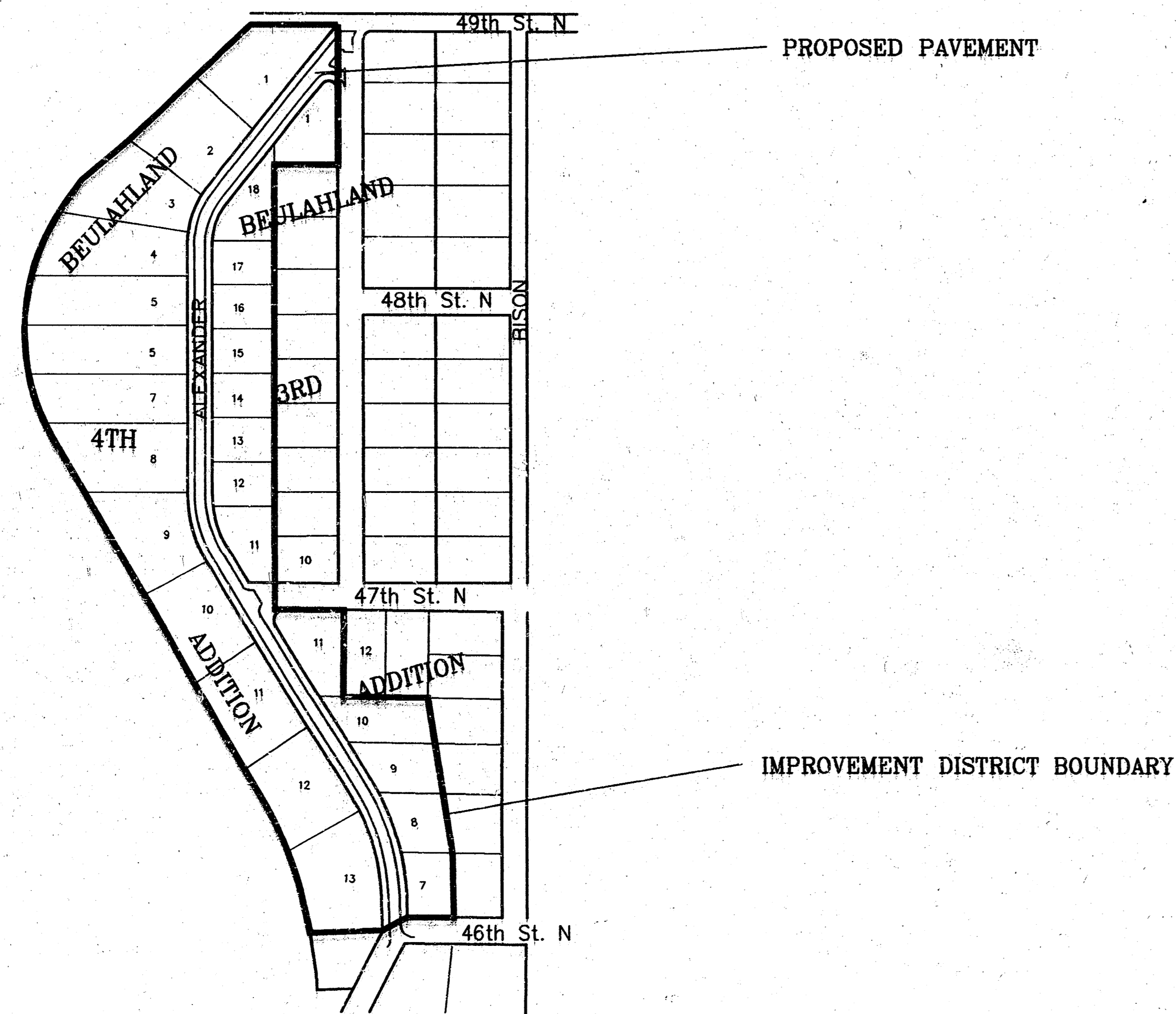
FROM N.L. 46TH ST. NO. TO S.L. 49TH ST. NO.

PROJ. NO. 472-82546

INDEX NO. 762930

CITY OF WICHITA, KANSAS

M. E. LINDEBAK - CITY ENGINEER



INDEX OF SHEETS

- SHEET 1 - TITLE SHEET
- SHEET 2 - CURVE DATA
- SHEET 3-6 - PAVING PLANS

C CURVE DATA						
RADIUS = 470.92'		TANGENT = 137.48'		EXTERNAL = 19.66'		DOC = 121°00'
CURVE DATA BASED ON C RADIUS Δ/2 = 1616.30'						
C STATION	C ARC LENGTH	EDGE ASPHL LENGTH		CHORD LENGTH		DEFLECTION ANGLE
		LEFT CURB	RIGHT CURB	IF OFF LEFT EDGE ASPHL	IF OFF RIGHT EDGE ASPHL	
1+40.33	—	—	—	—	—	0-0-0
1+50	9.67'	9.40'	9.94'	9.24'	10.10'	0-35-18
1+75	25.00'	24.31'	25.61'	23.88'	26.11'	1-31-15
2+00	25.00'	24.31'	25.61'	23.88'	26.11'	1-31-15
2+25	25.00'	24.31'	25.61'	23.88'	26.11'	1-31-15
2+50	25.00'	24.31'	25.61'	23.88'	26.11'	1-31-15
2+75	25.00'	24.31'	25.61'	23.88'	26.11'	1-31-15
3+00	25.00'	24.31'	25.61'	23.88'	26.11'	1-31-15
3+25	25.00'	24.31'	25.61'	23.88'	26.11'	1-31-15
3+50	25.00'	24.31'	25.61'	23.88'	26.11'	1-31-15
3+75	25.00'	24.31'	25.61'	23.88'	26.11'	1-31-15
4+00	25.00'	24.31'	25.61'	23.88'	26.11'	1-31-15
4+07.86	7.86'	7.84'	8.08'	7.51'	8.21'	0-28-41
TOTAL	267.53'	260.14'	274.92'			Defl./ft. = 6.1157 min.

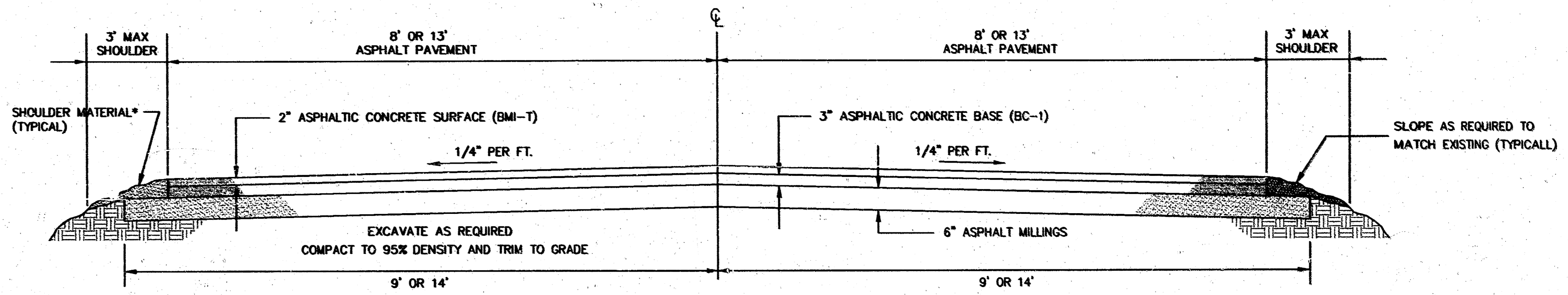
C CURVE DATA						
RADIUS = 257.73'		TANGENT = 75.24'		EXTERNAL = 10.76'		DOC = 1618°32'
CURVE DATA BASED ON C RADIUS Δ/2 = 1616.31'						
C STATION	C ARC LENGTH	EDGE ASPHL LENGTH		CHORD LENGTH		DEFLECTION ANGLE
		LEFT CURB	RIGHT CURB	IF OFF LEFT EDGE ASPHL	IF OFF RIGHT EDGE ASPHL	
10+49.94	—	—	—	—	—	0-0-0
10+50	.06'	.06'	.06'	.06'	.06'	0-0-24
10+75	25.00'	26.26'	23.74'	27.04'	22.96'	2-46-44
11+00	25.00'	26.26'	23.74'	27.04'	22.96'	2-46-44
11+25	25.00'	26.26'	23.74'	27.04'	22.96'	2-46-44
11+50	25.00'	26.26'	23.74'	27.04'	22.96'	2-46-44
11+75	25.00'	26.26'	23.74'	27.04'	22.96'	2-46-44
11+96.36	21.36'	22.44'	20.26'	23.10'	19.82'	2-22-27
TOTAL	146.42'	153.81'	139.03'			Defl./ft. = 6.6893 min.

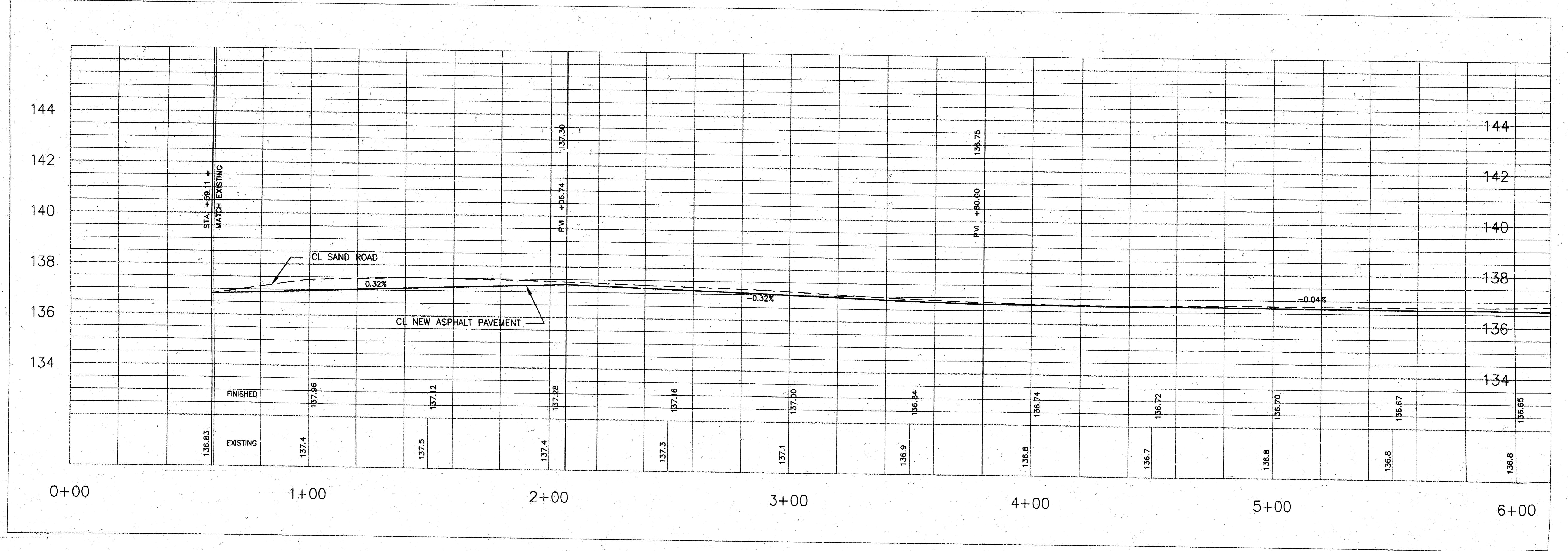
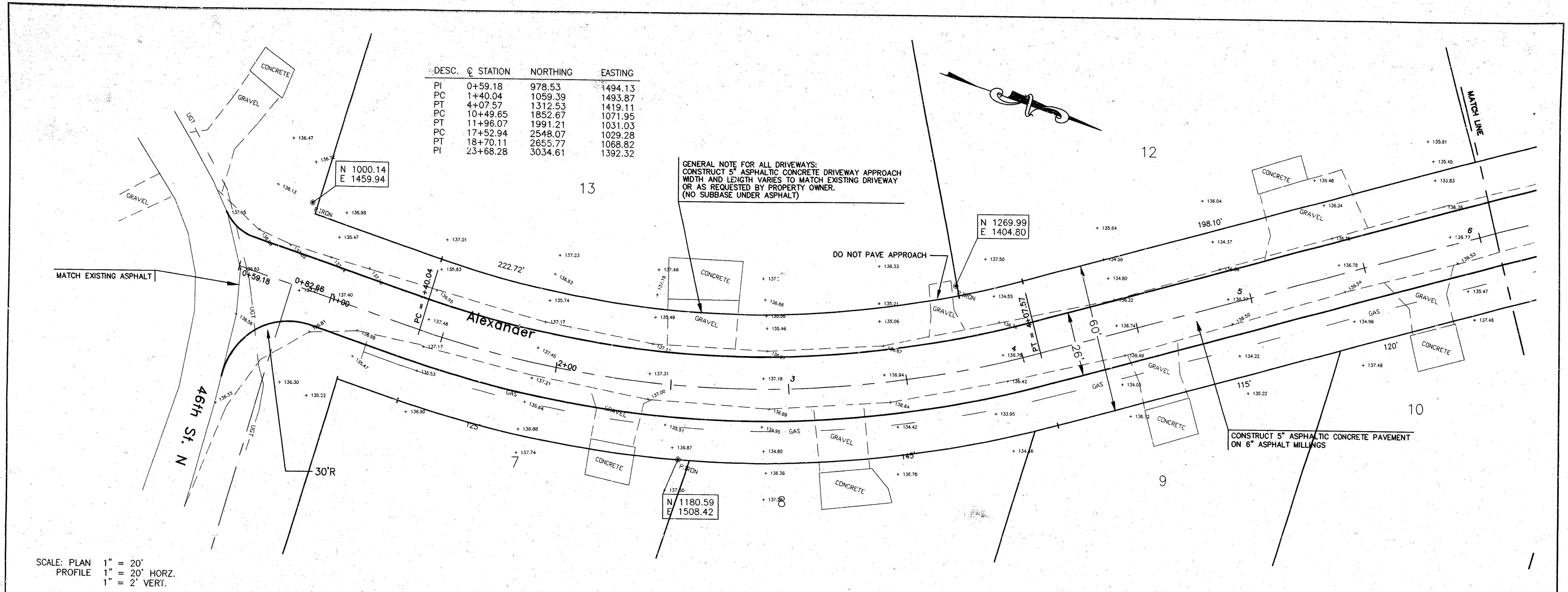
C CURVE DATA						
RADIUS = 165.05'		TANGENT = 60.35'		EXTERNAL = 10.69'		DOC = 34°42'51"
CURVE DATA BASED ON C RADIUS Δ/2 = 205°18'						
C STATION	C ARC LENGTH	EDGE ASPHL LENGTH		CHORD LENGTH		DEFLECTION ANGLE
		LEFT CURB	RIGHT CURB	IF OFF LEFT EDGE ASPHL	IF OFF RIGHT EDGE ASPHL	
17+53.23	—	—	—	—	—	0-0-0
17+75	25.00'	26.98'	23.04'	28.19'	21.83'	3-46-47
18+00	25.00'	26.98'	23.04'	28.19'	21.83'	4-20-26
18+25	25.00'	26.98'	23.04'	28.19'	21.83'	4-20-26
18+50	25.00'	26.98'	23.04'	28.19'	21.83'	4-20-26
18+68.93	18.93'	20.43'	17.44'	21.35'	16.53'	3-17-12
TOTAL	115.70'	124.85'	106.62'			Defl./ft. = 10.4174 min.

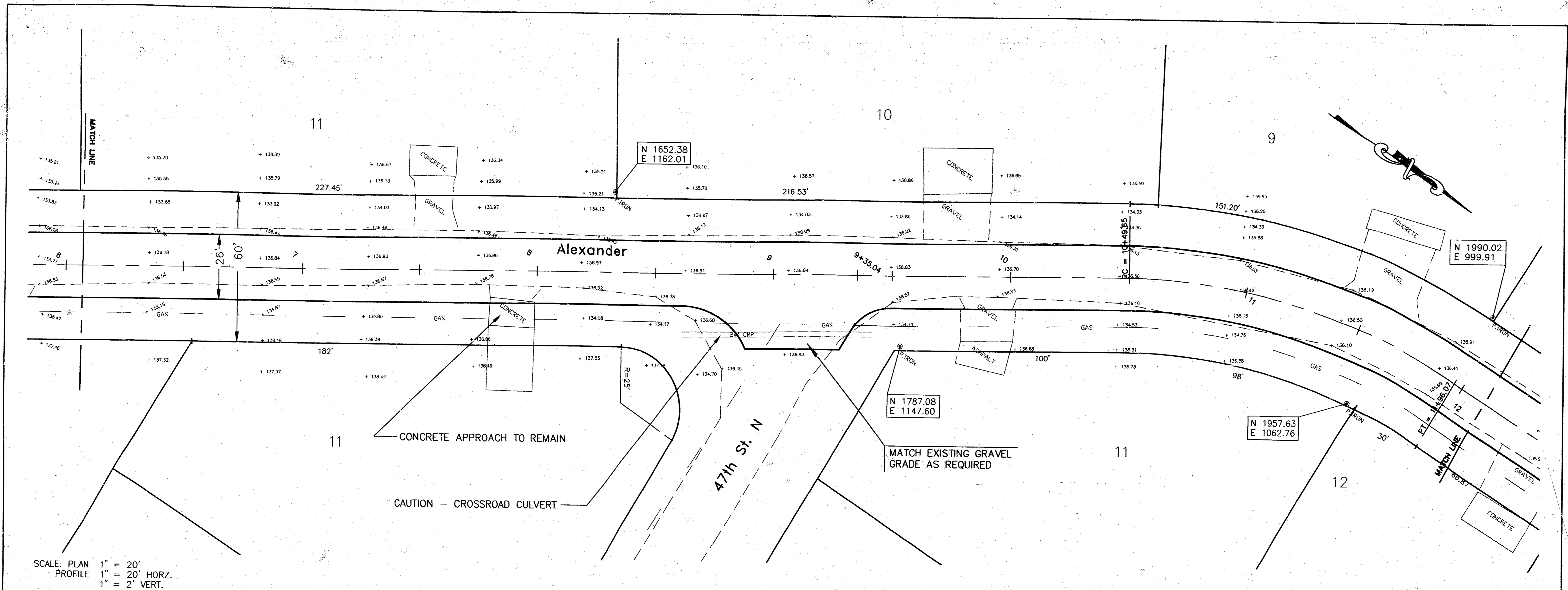
BENCHMARKS:

Seneca and 46th St. N
 COW Bench Mark - east side concrete headwall
 south side 46th St. 40' +/- west of Seneca
 57.5' SW of intersection.
 Elev. 136.48

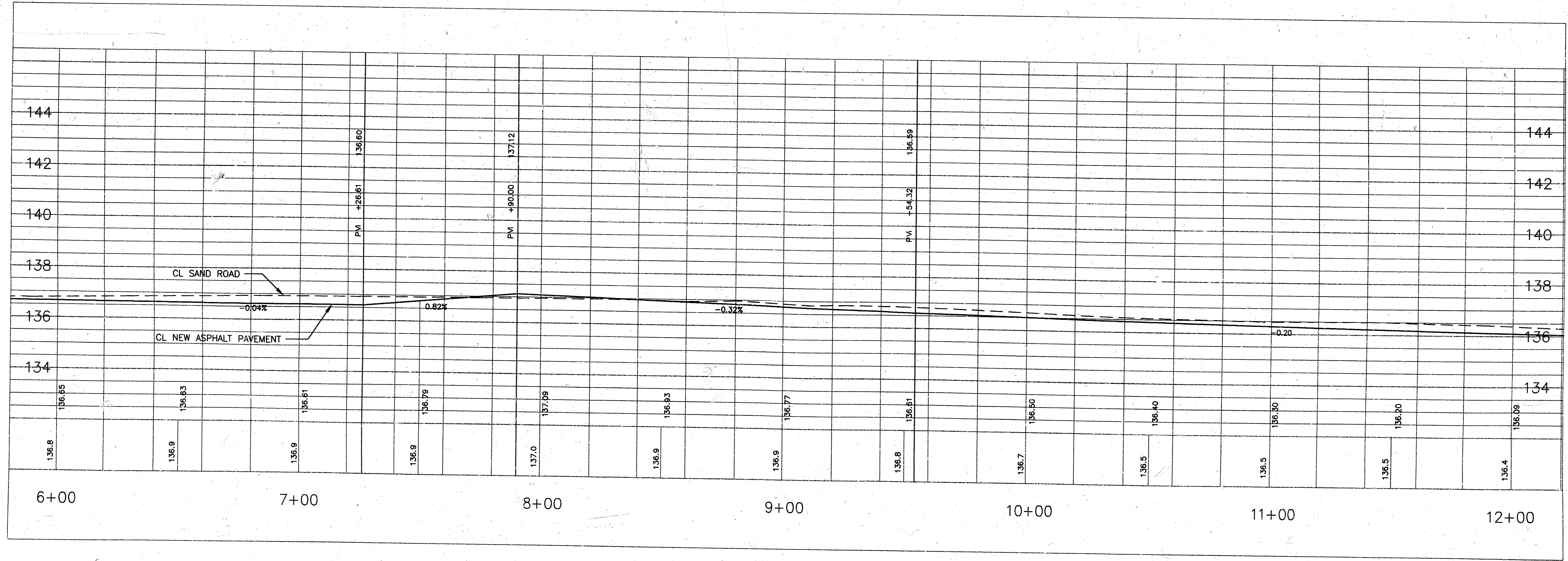
Alexander and 46th St. N
 RR spike - east face of power pole, west side
 of Alexander, south side of 46th St. N.
 Elev. 138.36

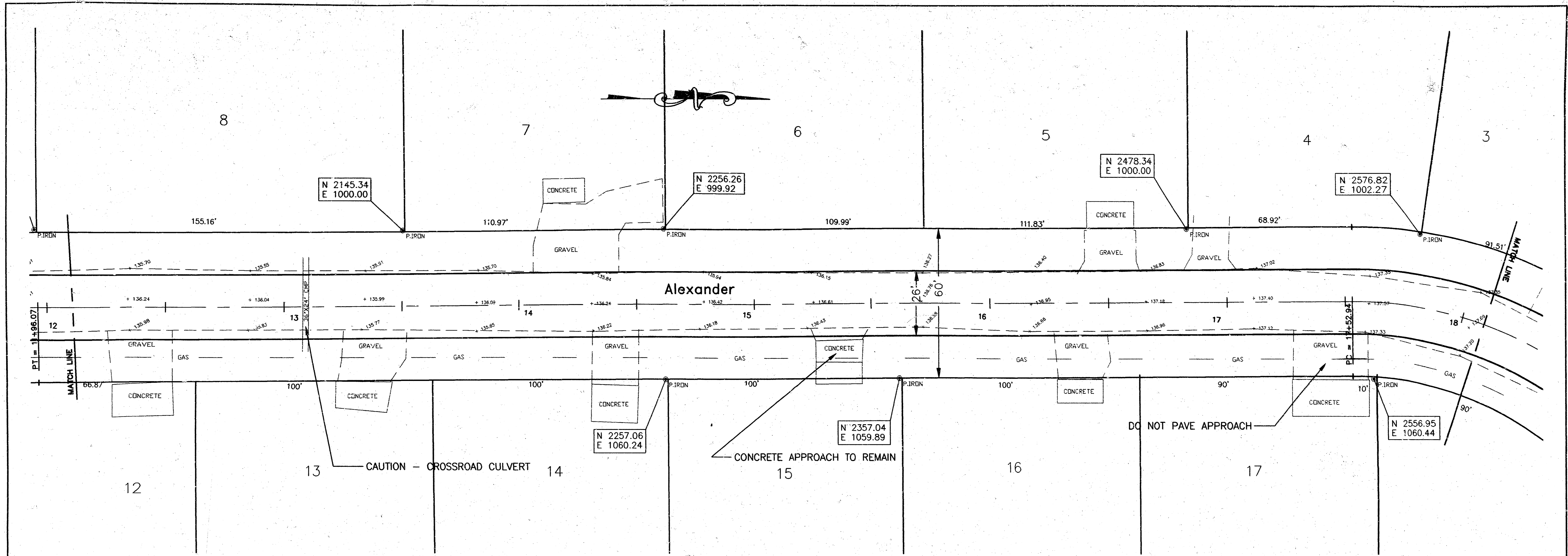




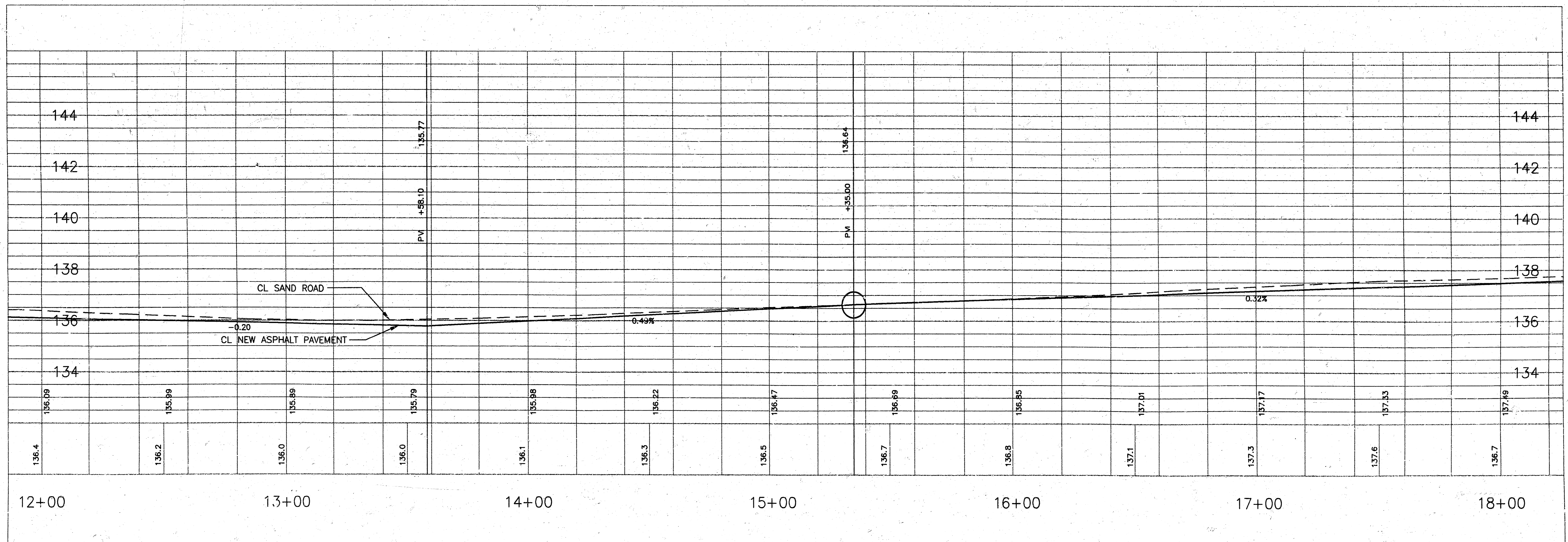


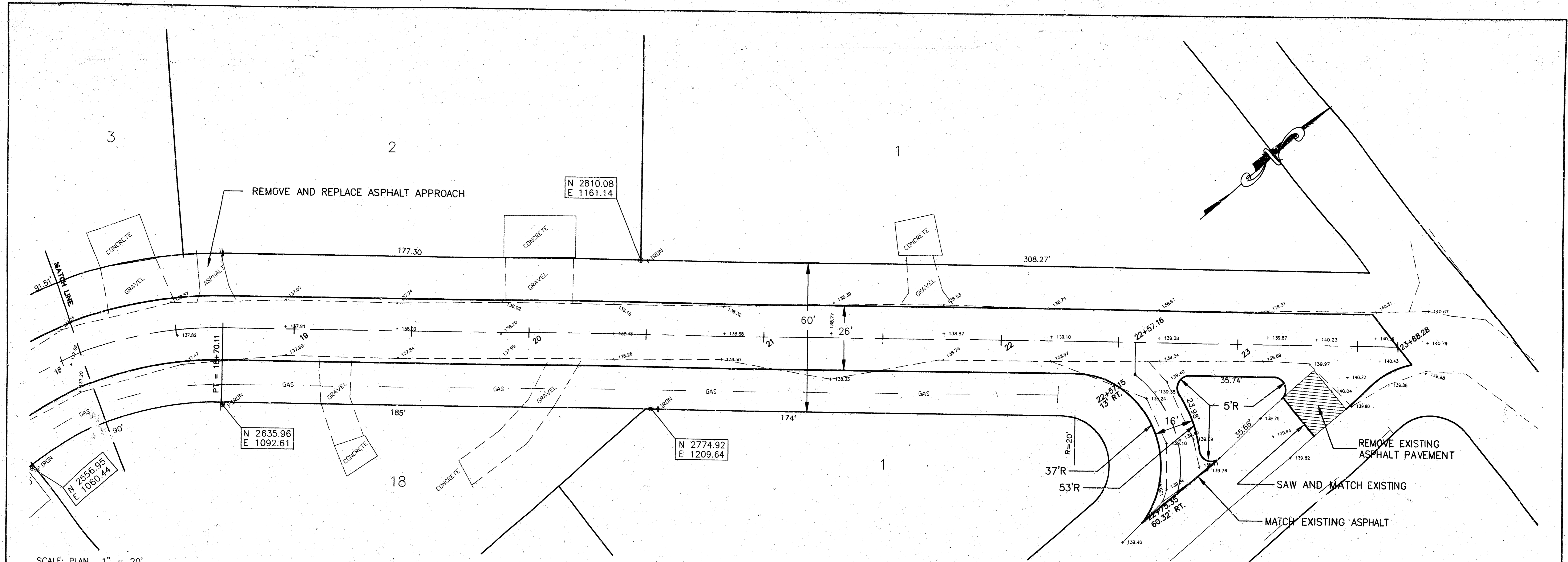
SCALE: PLAN 1" = 20'
 PROFILE 1" = 20' HORIZ.
 1" = 2" VERT.





SCALE: PLAN 1" = 20'
 PROFILE 1" = 20' HORZ.
 1" = 2' VERT.





SCALE: PLAN 1" = 20' HORIZ.
 PROFILE 1" = 20' HORIZ.
 1" = 2' VERT.

