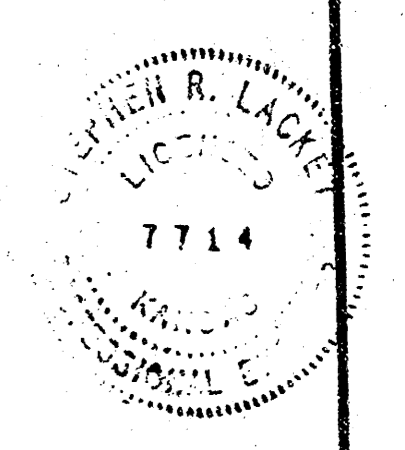
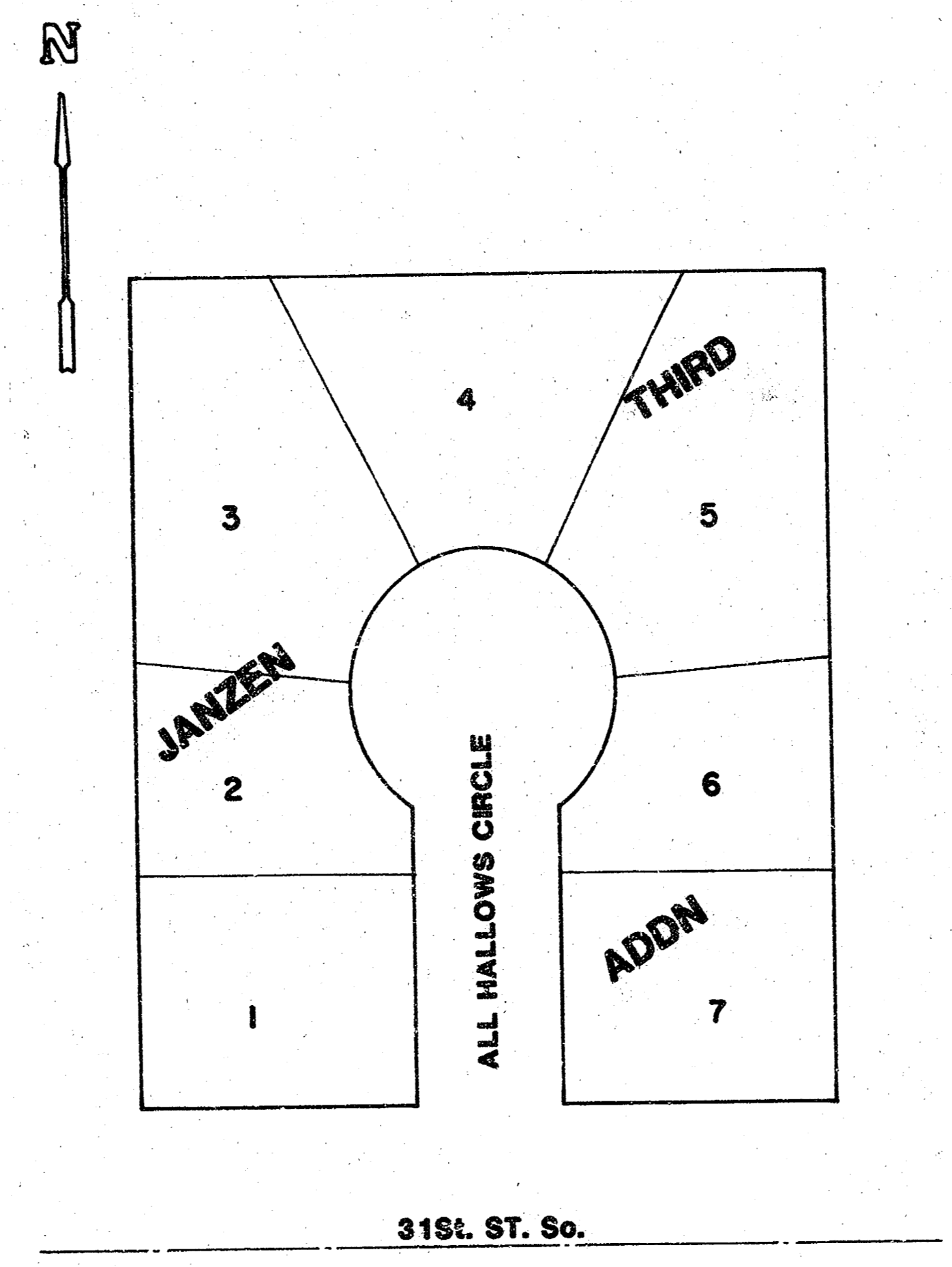
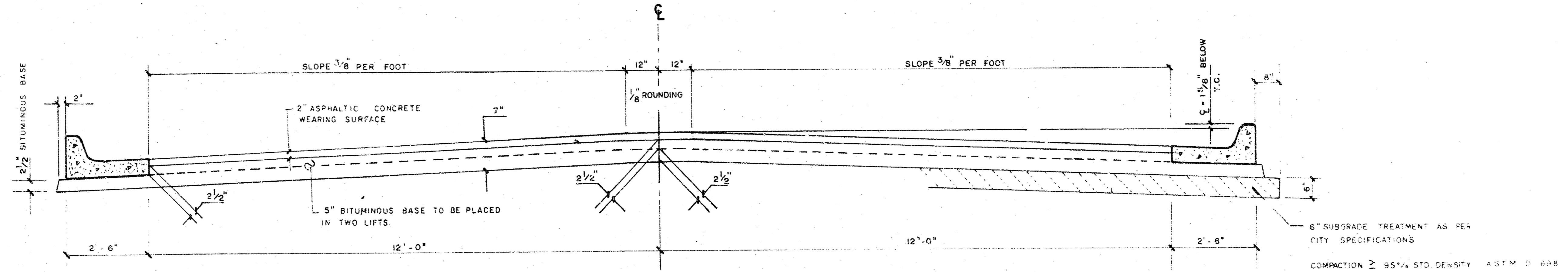


ALL HALLOWS CIRCLE
N.L. 31st. ST. So. TO AND INCLUDING CUL-DE -SAC
CITY OF WICHITA, KANSAS
DEPARTMENT OF ENGINEERING
R. W. BRUGGEMAN DIRECTOR OF ENGINEERING/CITY ENGINEER
DATE: PROJ. NO. 472 76 245 81041 000 000 001



ALL HALLOWS CIRCLE
N. L. 31st. ST. So. TO & INCLD. CUL-DE-SAC



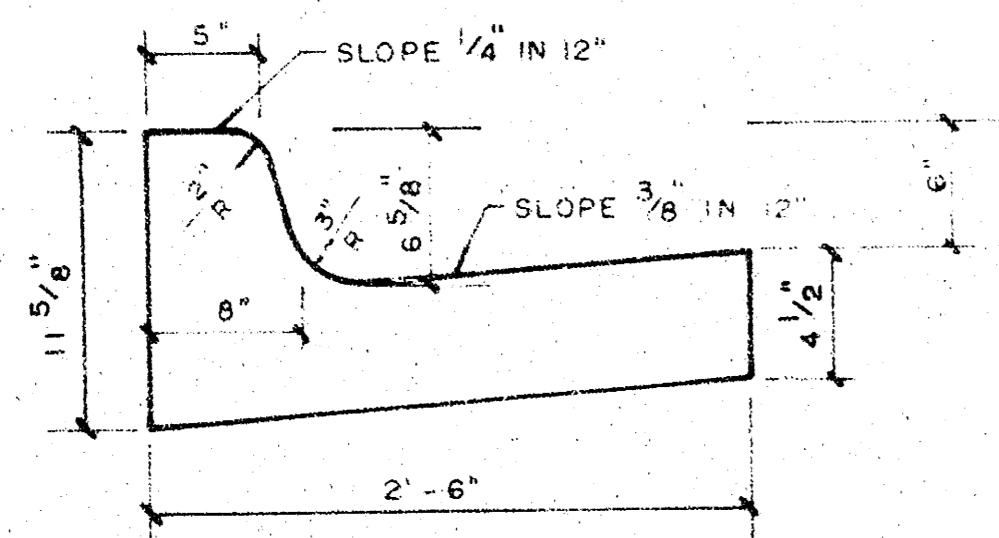
TYPICAL SECTION

29' ASPHALTIC CONCRETE PAVEMENT WITH BITUMINOUS BASE

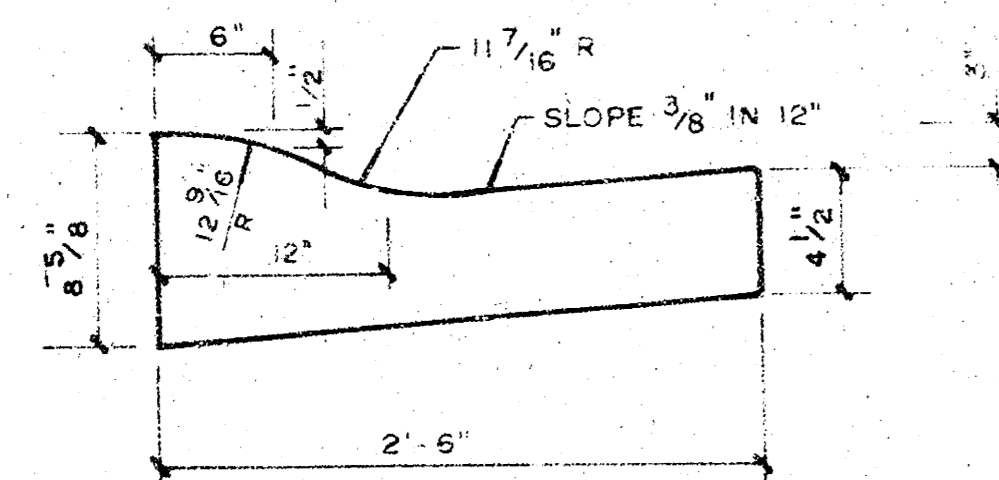
A TACK COAT OF EMULSIFIED ASPH(SS-IH or CSS-IH) SHALL BE APPLIED AT AN APPROXIMATE RATE 0.05 GALLONS PER SQ YD BETWEEN LIFTS OF ASPHALTIC MATERIALS WHEN ORDERED BY THE ENGINEER. TACK COAT WILL NOT BE PAID DIRECTLY AND SHALL BE CONSIDERED AS SUBSIDIARY TO PRICE BID FOR ASPHALTIC PAVEMENT. BITUMINOUS BASE AND ASPHALTIC CONCRETE WEARING SURFACE SHALL BE PLACED WITH A LAYDOWN MACHINE HAVING AUTOMATIC CONTROLS FOR CROWN AND GRADE. CONSTRUCTION JOINTS IN EACH LIFT SHALL BE STAGGERED A MINIMUM DISTANCE OF 1' WITH JOINTS IN PRECEDING LIFTS AND PLACED SUCH THAT A JOINT WILL BE CONSTRUCTED ON THE CENTERLINE IN THE TOP LIFT.

THE A.C. PAVEMENT BETWEEN THE COMBINED CURB AND GUTTER SHALL BE PAID AS SQ YDS 7" A.C. PAVEMENT (5" BITUMINOUS BASE). THE BITUMINOUS BASE UNDER THE COMBINED CURB AND GUTTER SHALL BE PAID AS SQ YDS 2 1/2" BITUMINOUS BASE.

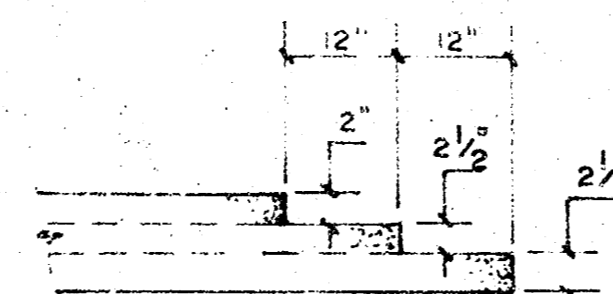
COMBINED CURB & GUTTER



ROLL TYPE CURB & GUTTER



DETAIL OF TRANSVERSE CONSTRUCTION JOINTS



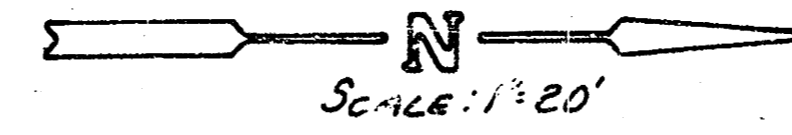
TRANSVERSE CONSTRUCTION JOINTS SHALL BE CONSTRUCTED IN FLEXIBLE BASE PAVEMENTS AT LOCATIONS WHERE PAVEMENT TEMPORARILY ENDS TO FACILITATE FUTURE PAVEMENT CONSTRUCTION AS SHOWN BY DETAIL. THE COST OF CONSTRUCTING THE TRANSVERSE CONSTRUCTION JOINTS SHALL NOT BE MEASURED OR PAID FOR DIRECTLY BUT SHALL BE INCLUDED IN THE BID PRICE FOR SQUARE YARDS OF A.C. PAVEMENT.

472 76 245 81041 000 000 001

FILMED FROM THE BEST AVAILABLE COPY

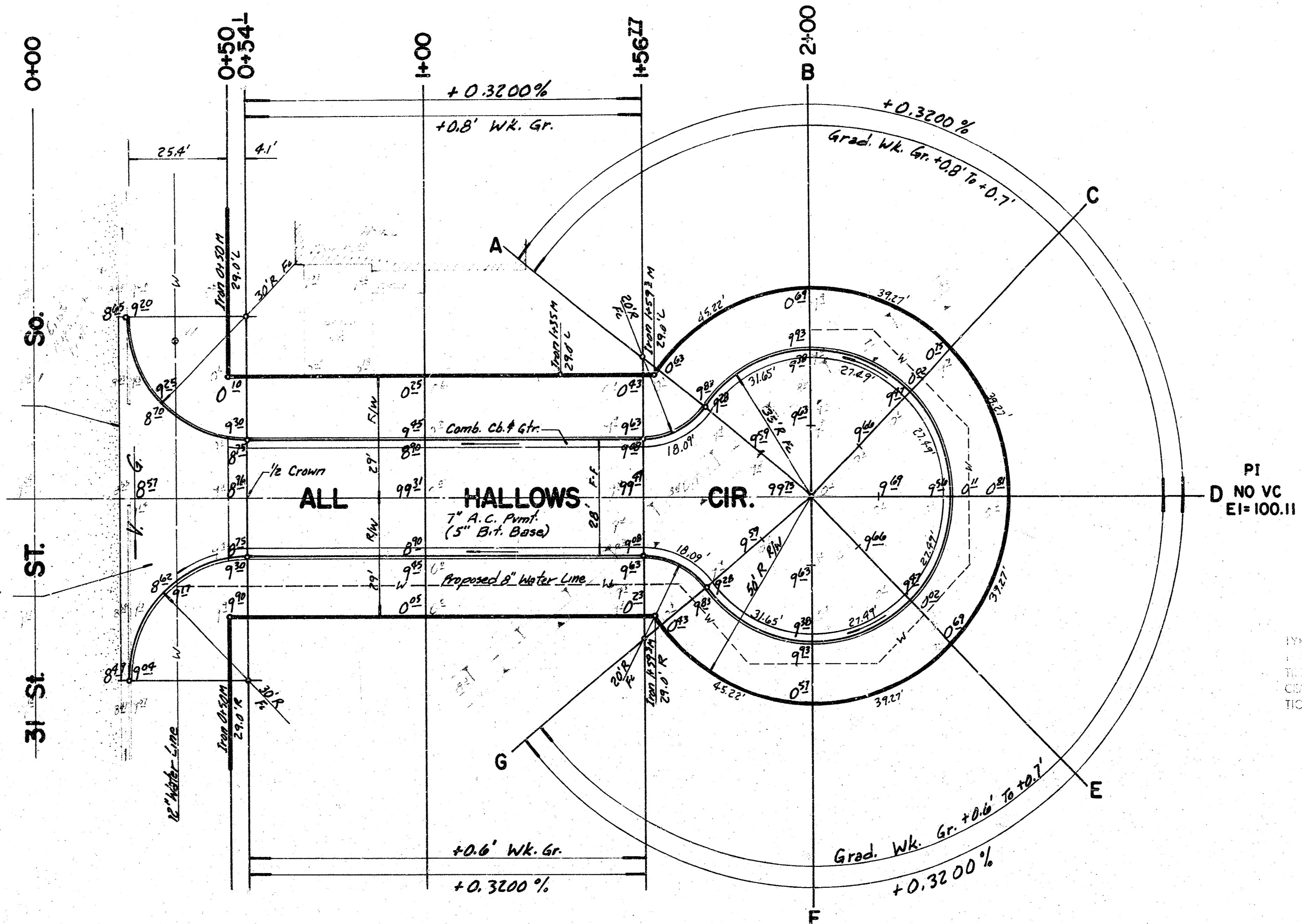
BM= 103.52 ~ City Std. Disc. Top of E. End S. Handrail RCB Sheridan & 31st St. So.
 BM= 99.37 ~ " " Top of Cb. S. Side 31st St. St. on E.L. ALL Hallows.

⊕ IS E ALL HALLOWS.



Match Exist. Prof.
 at H.E. Any Sawing or
 Patching To Be Incidental.

Const. 7" Valley Gtr.
 (6" B.t. Base)
 w/ Int. Curb



PI
 D NO VC
 EI=100.11

NOTE: THIS PLAN IS TO BE USED IN CONNECTION WITH THE GRADE SHEET AND THE PROFILES. IT IS THE RESPONSIBILITY OF THE CONTRACTOR TO VERIFY THE LOCATION AND DEPTH OF ALL UTILITIES AND TO PROTECT THEM AT ALL TIMES. NO GUARANTEE IS MADE FOR THE ACCURACY OF THE INFORMATION OR ANY COMBINATION THEREOF.

EARTHWORK EXCAVATION		
	PROPERTY	CITY
'X'-SECTIONS	393.9 CY	59.4 CY
10%	99.4 CY	5.9 CY
TOTAL	433.3 CY	65.3 CY

1000.0 S.Y. Manipulation.

ALL HALLOWS CIRCLE
 472 76 245 81041 000 000 001

31041
 166113

FINAL DATE		STATEMENT OF COST				PROJ. NO. 1226245 81041 000 000 001		P.E.
		FOR CONSTRUCTION OF: ALL HOLLOW'S CIRCLE ~ NL 31ST ST SO TO E INCL. SEC.				32,437.12		AA
		WORKING DAYS ~ OK!						
QUANTITIES			UNIT	CONSTRUCTION ITEM	COSTS			
PROP.	CITY	TOTAL	PRICE		PROP.	CITY	TOTAL	
700'	0	700	13.46	SQ. YDS. 7" RC EVMT. (5" BIT)	9,422.00	0.00	9,422.00	
147'		147	21.63	SQ. YDS. 7" V.G. (5" CONC-2" BIT)	3,172.61		3,172.61	
126'		126	4.81	SQ. YDS. 2 1/2" BIT BASE	606.06		606.06	
453'		453	1.40	CU. YDS. EXCAVATION	634.20		634.20	
423'		423	6.00	LIN. FT. COMB. CB. & GTR.	2,538.00		2,538.00	
88'		88	3.00	LIN. FT. INTEGRAL CURB	264.00		264.00	
2,128'		2,128	2.65	SQ. FT. 6" DRIVE	5,639.20		5,639.20	
1,002'		1,002	0.85	SQ. YDS. MANIPULATION	851.70		851.70	
8'		8	86.50	TONS LIME	692.00		692.00	
90'	0	90	2.65	LIN. FT. COMB. CB. & GTR. REMOVED.	238.50		238.50	
SUB-TOTAL					24,065.27	0.00	24,065.27	
ENGINEERING AND INSP.					3146.60		3146.60	
ADMINISTRATION					360.98		360.98	
PUBLICATION					53.99		53.99	
ABSTRACTING					2.50		2.50	
STREET NAME SIGNS						53.75	53.75	
CONSTR. COST					27,629.34	53.75	27,683.09	
TEMP. WKE. INT.					1820.19	-	1820.19	
TOTAL COST					29,449.53	53.75	29,503.28	
6/83								

5/6