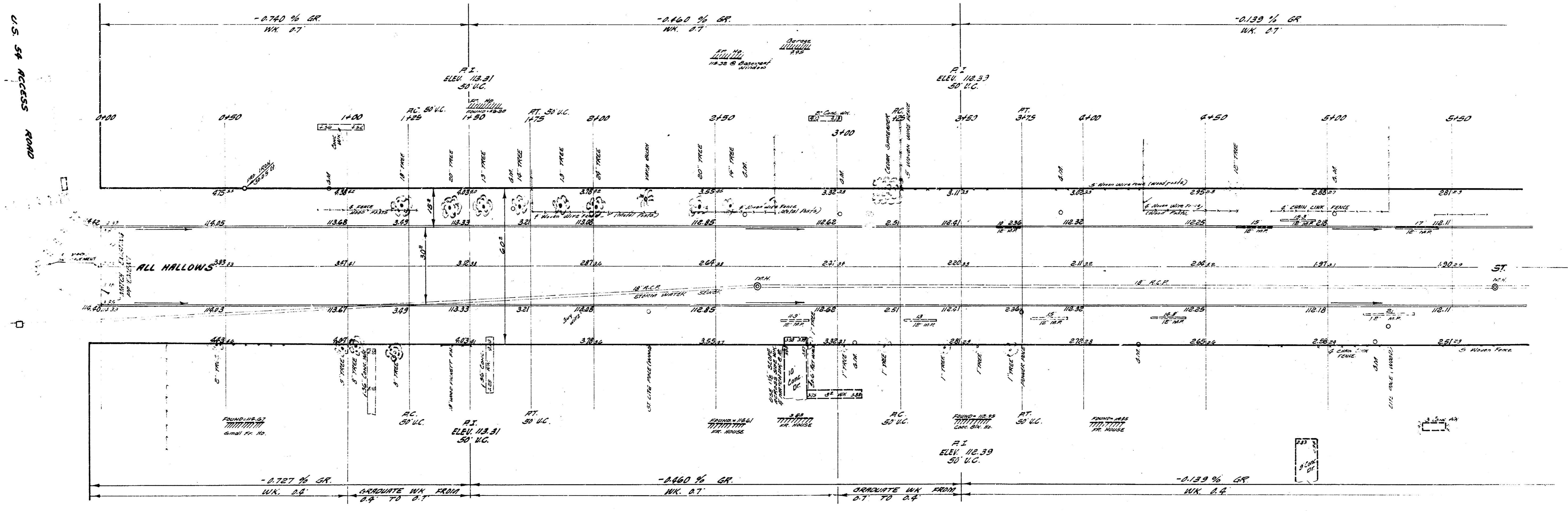
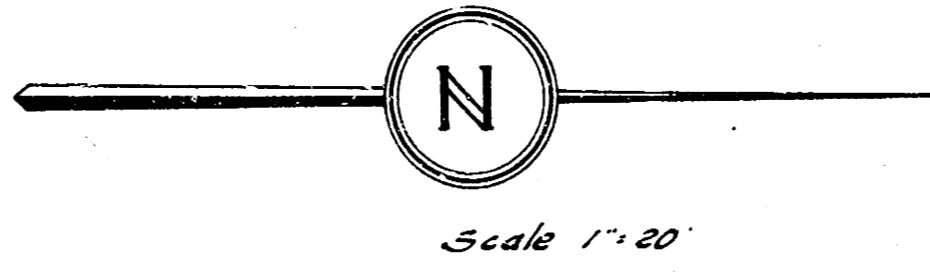
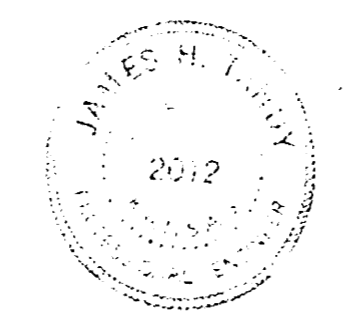


3.11 15.31 12" C.P. SECOND CONC. STEP NO. 006 ALL HALLOWS
 3.12 16.70 24" IN GRADE U. END RADIUS ON N.E. COR. ALL HALLOWS & TRF.
 3.13 12.50 18" CUT TOP C.B. C.P. ROAD ON S.W. COR. TRF. & UNIVERSITY
 3.14 14.46 3.5' DIA. CONC. PAVING NO. 4 V.I. S.W. COR. ALL HALLOWS & UNIVERSITY

STATIONING & BASELINE ALONG & OF ALL HALLOWS.



NOTE TO FIELD ENGINEER & CONTRACTOR:
 All entrance pipes are to be disposed of in accordance with instructions from the City dirt checker.

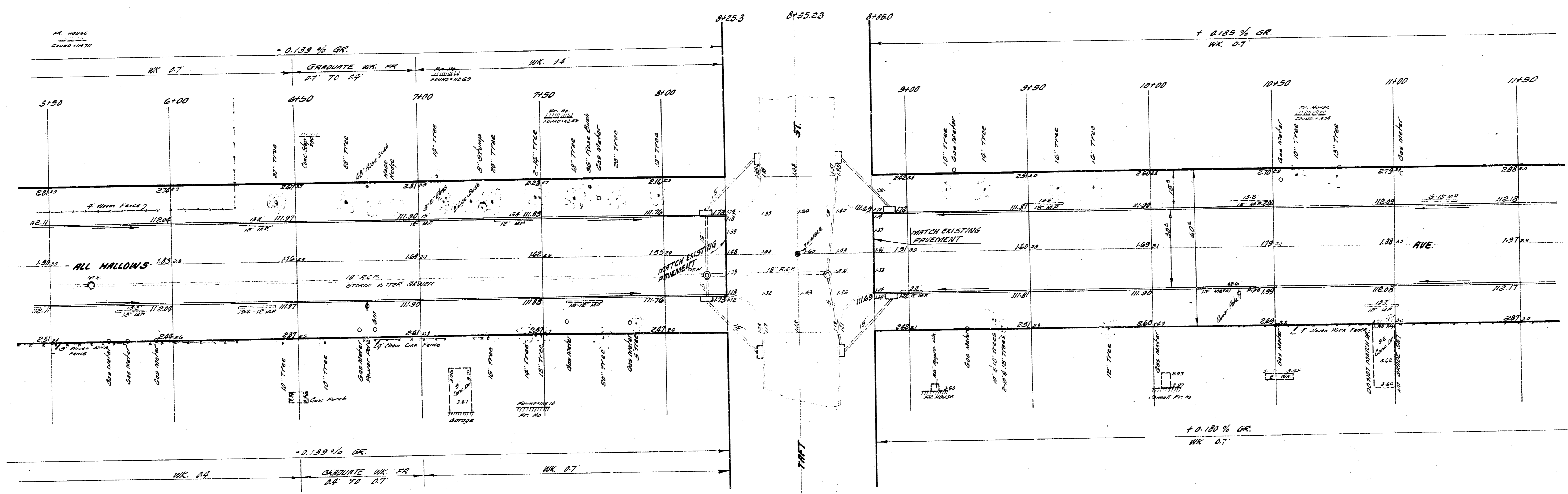


EXCAVATION



1/5

ALL HALLOWS AVE.
 U.S. 54 HIGHWAY TO ST. UNIVERSITY
 30' CONCRETE & CS
 CITY OF WICHITA, KANSAS
 B. E. SMITH, CITY ENGINEER
 DATE NOV. 1943 PROJ. NO. C 10-40



ALL MALLOWIS
PROJ. NO. C10-90

