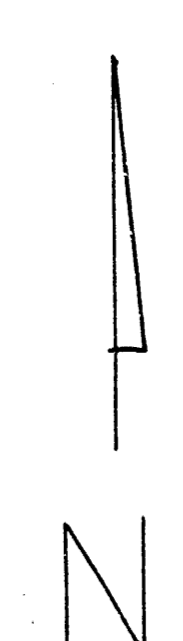
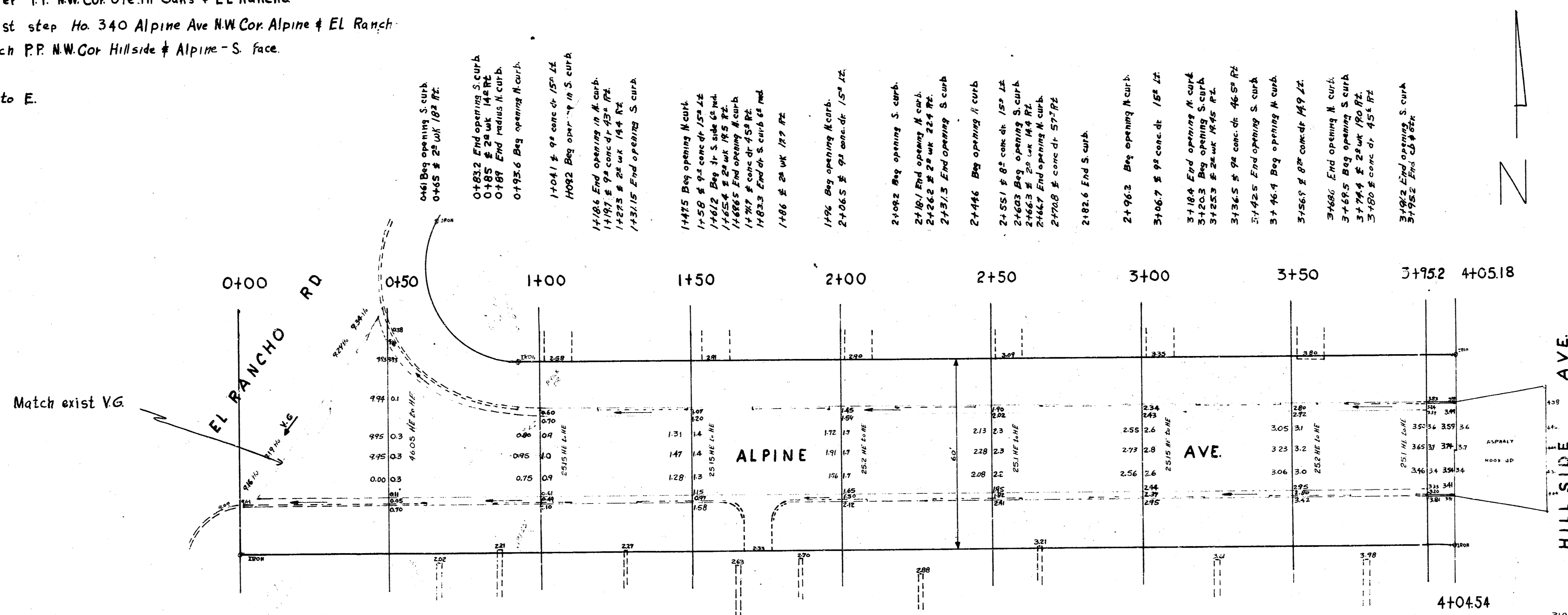


B.M. 10175 'M' in Muller F.P. NW Cor. 61e. in Oaks # EL Rancho
 B.M. 10351 S.E. Cor 1st step Ho. 340 Alpine Ave NW Cor. Alpine # EL Rancho
 B.M. 10508 Step bench P.P. NW Cor. Hillside # Alpine - S. face.

Station # W to E.



Survey 374
 BK 3464
 Plan 107
 1/27

EXCAVATION

CITY	PROPERTY
20000.00	2090.00
105.7	20.0
22.0	229.9
1.1	
17.3	

