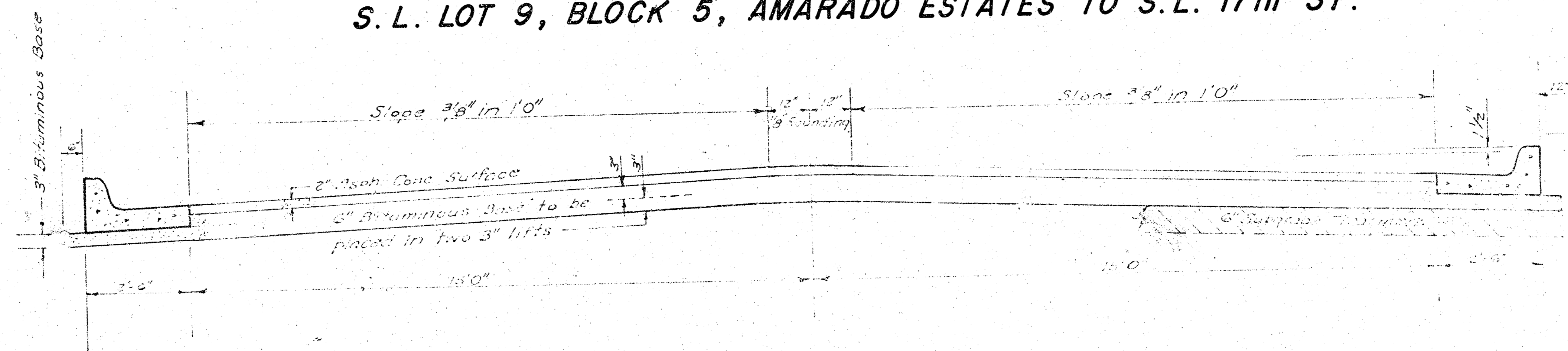


**AMARADO CT.**  
 LOT 9-14, BLOCK 5, - W.L. AMARADO TO & INCL. CUL-DE-SAC.

**AMARADO CT.**  
 LOT 15-20, BLOCK 5, - W.L. AMARADO TO & INCL. CUL-DE-SAC.

**AMARADO**  
 S.L. LOT 9, BLOCK 5, AMARADO ESTATES TO S.L. 17th ST.

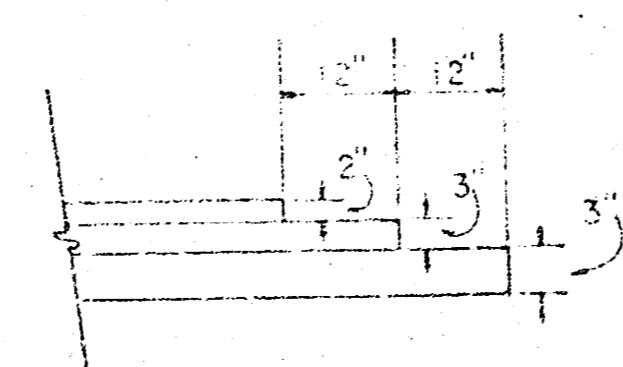


**TYPICAL SECTION**

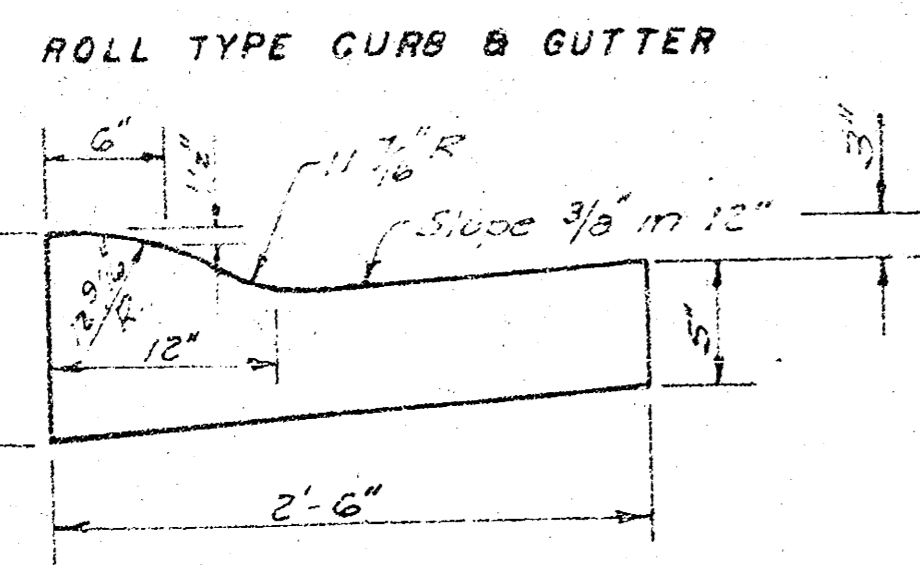
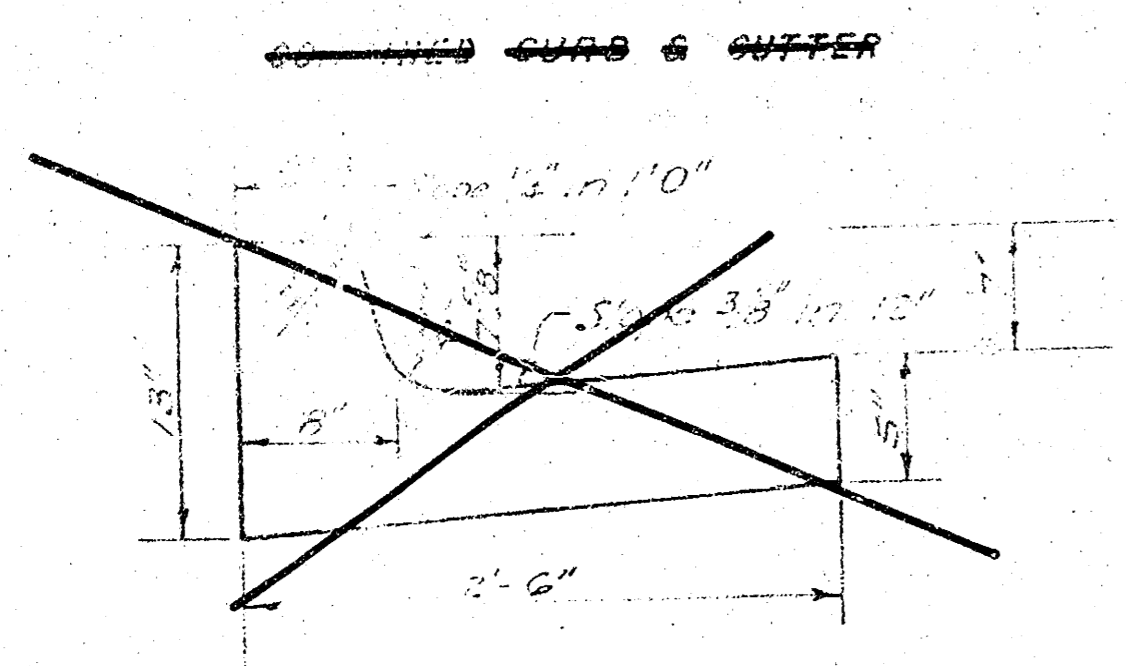
**35' ASPHALTIC CONCRETE PAVEMENT WITH BITUMINOUS BASE**

A TACK COAT OF EMULSIFIED ASPHALT (SS-1H) SHALL BE APPLIED AT AN APPROXIMATE RATE 0.05 GALLONS PER SQ YD BETWEEN LIFTS OF ASPHALTIC MATERIALS WHEN ORDERED BY THE ENGINEER. TACK COAT WILL NOT BE PAID FOR DIRECTLY AND SHALL BE CONSIDERED AS SUBSIDIARY TO PRICE BID FOR ASPHALTIC PAVEMENT. BITUMINOUS BASE AND ASPHALTIC CONCRETE WEARING SURFACE SHALL BE PLACED WITH A LAYDOWN MACHINE HAVING AUTOMATIC CONTROLS FOR CROWN AND GRADE. CONSTRUCTION JOINTS IN EACH LIFT SHALL BE STAGGERED A MINIMUM DISTANCE OF 1' WITH JOINTS IN PRECEDING LIFTS AND PLACED SUCH THAT A JOINT WILL BE CONSTRUCTED ON THE CENTERLINE IN THE TOP LIFT.

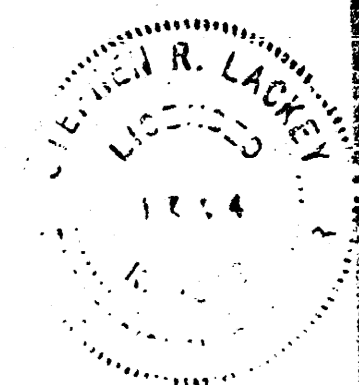
**DETAIL OF TRANSVERSE CONSTRUCTION JOINTS**



TRANSVERSE CONSTRUCTION JOINTS SHALL BE CONSTRUCTED IN FLEXIBLE BASE PAVEMENTS AT LOCATIONS WHERE PAVEMENT TEMPORARILY ENDS TO FACILITATE FUTURE PAVEMENT CONSTRUCTION AS SHOWN BY DETAIL. THE COST OF CONSTRUCTING THE TRANSVERSE CONSTRUCTION JOINTS SHALL NOT BE MEASURED OR PAID FOR DIRECTLY BUT SHALL BE INCLUDED IN THE BID PRICE FOR SQUARE YARDS OF ASPHALTIC CONCRETE PAVEMENT.



The Bituminous Base and Asphaltic Concrete Wearing Surface shall be placed as shown in Figure 3.

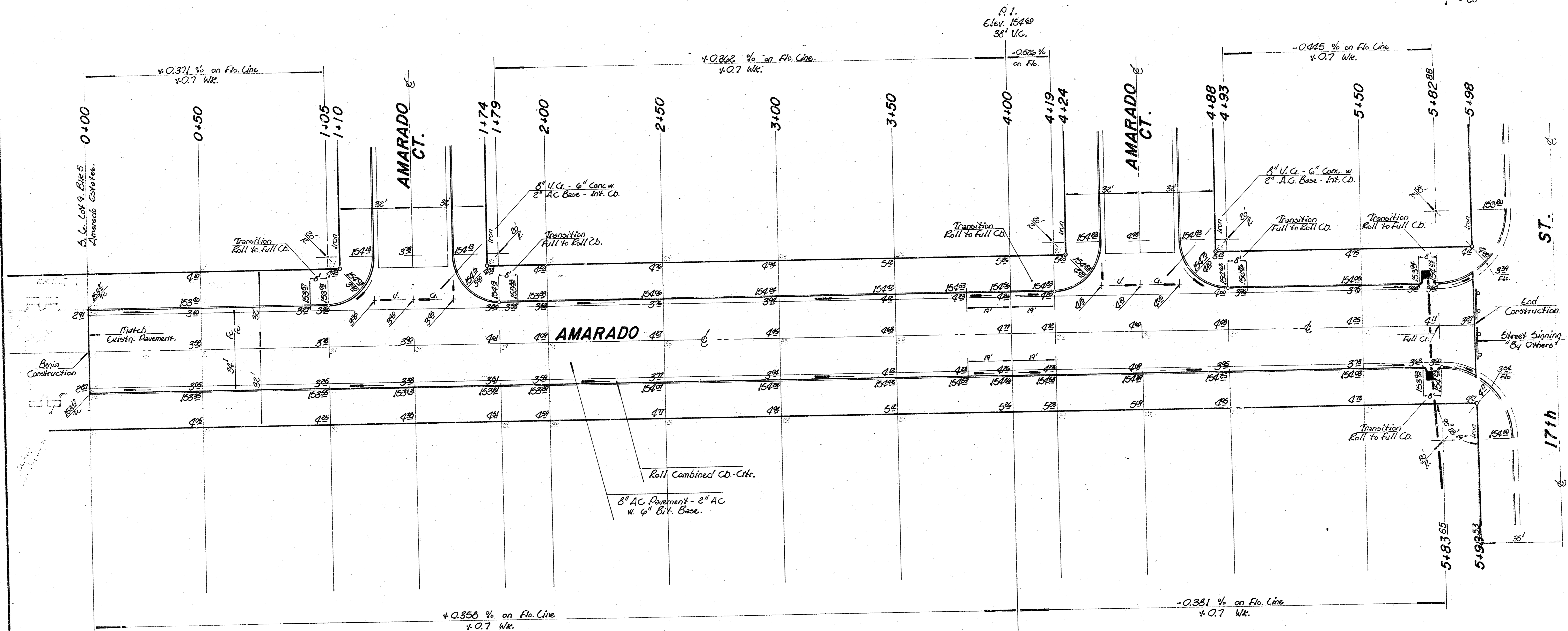


**CITY OF WICHITA KANSAS**  
 DEPARTMENT of PUBLIC WORKS - Engineering  
 Division  
 D. S. SELLERS ——— ACTING CITY ENGINEER  
 PROJECT NO. \_\_\_\_\_  
 472-76-245-80326-000-000-001

**FILMED FROM THE BEST AVAILABLE COPY.....**

B.M. 153.18 '01' cfr. E. F. Conc. Lid SWS Cb. (3. Cb of 2) W.L. Amaro. Dr. Between Lots 8-9 Blk. 5 Amaro Estates.

Scale:  
1" = 20'



Survey  
Plan  
Exp.  
Checker

Note: No more than 7-20' Dr's to be constructed.

Roll Type Cb. & Grutter to be constructed on this project.

SUB-GRADE  
TYPE OF SUB-GRADE TREATMENT SHALL BE DETERMINED BY THE FIELD ENGINEER. SUB-GRADE TREATMENT MAY CONSIST OF LIME TREATMENT, CEMENT TREATMENT, SUB-GRADE MODIFICATION, OR ANY COMBINATION OF THESE.

Property		Earthwork Quantities	
Exc.	198.0 CY	Comb. Fill	119.7
+10%	19.8 CY	+10%	12.0
Total	217.8 CY	Total	131.7
Manipulation = 4070 CY			

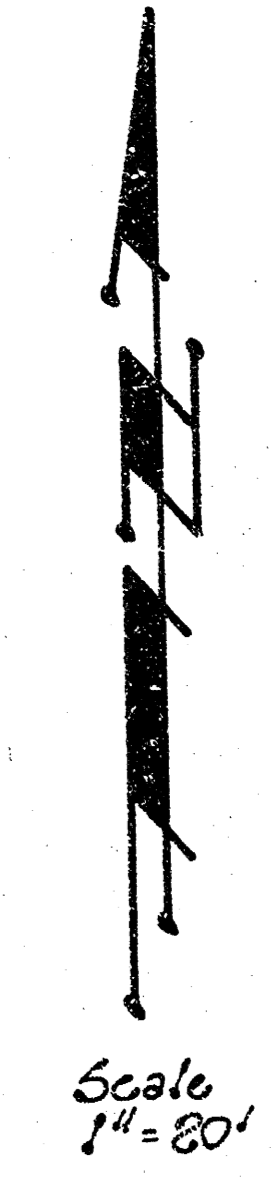
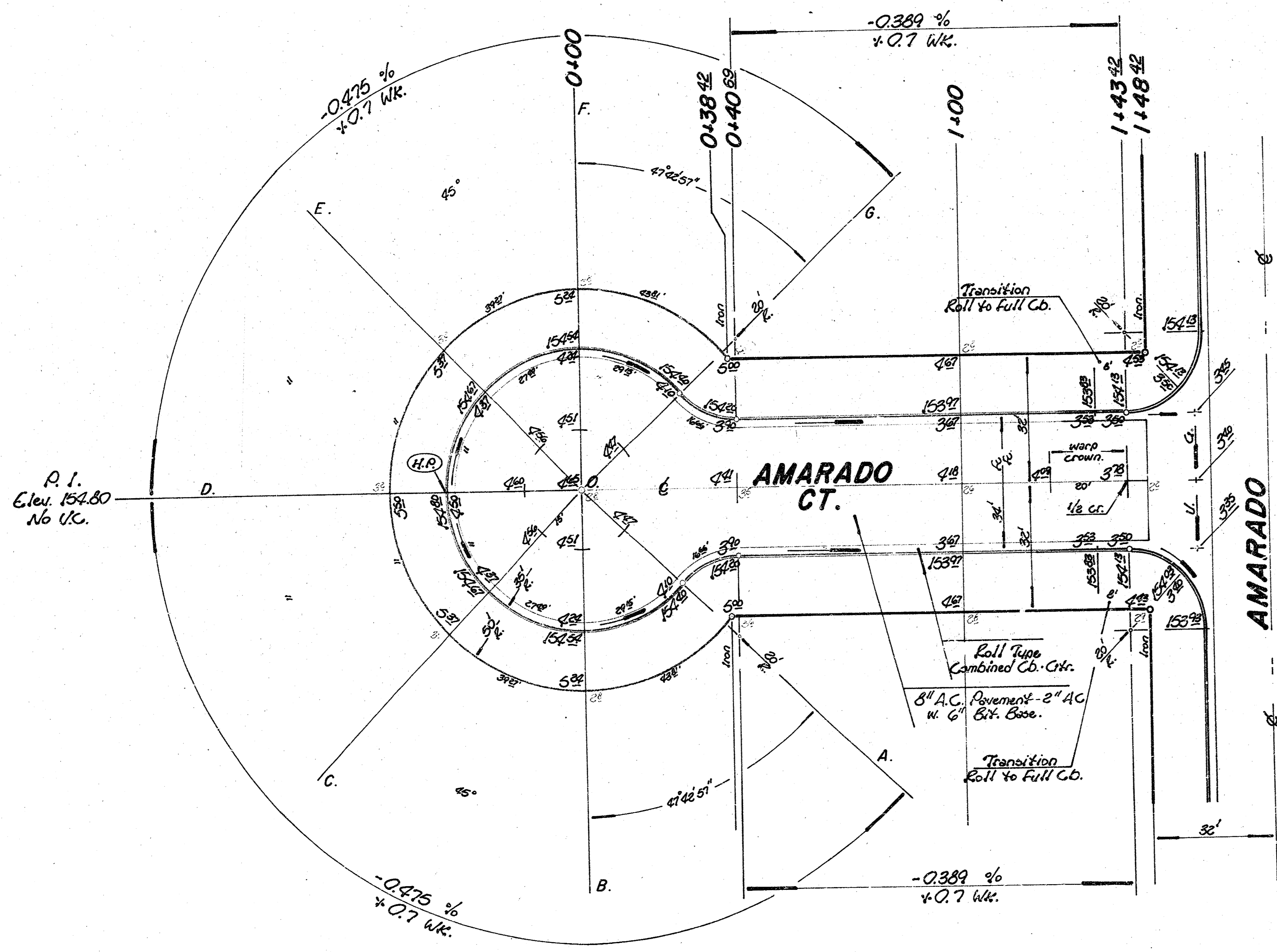
City	
Exc.	20.5 CY
+10%	2.1 CY
Total	22.6 CY
Manipulation = 407 CY	

Note:

Pavement Contractor to Co-ordinate Construction w. that of Vallejueco & Vallejueco Cts. (Proj. No. 472-76-245 80877-000-000-001 & 472-76-245 80878-000-000-001) in order to utilize the excess earthwork for construction of this project.  
Pavement Contractor to Co-ordinate Construction w. the Storm Sewer Contractor.  
Field Engineer to take 'ties' and any 'brons' moved or destroyed during Constr. shall be replaced.  
Roll-Type Cb. & Gr. to be constructed on this proj. Transition Sections to be Paid as Roll-Type Cb. & Grutter.  
Contractor to contact utility Co's for underground line location. Water lines to be located prior to construction.

AMARADO

2/10



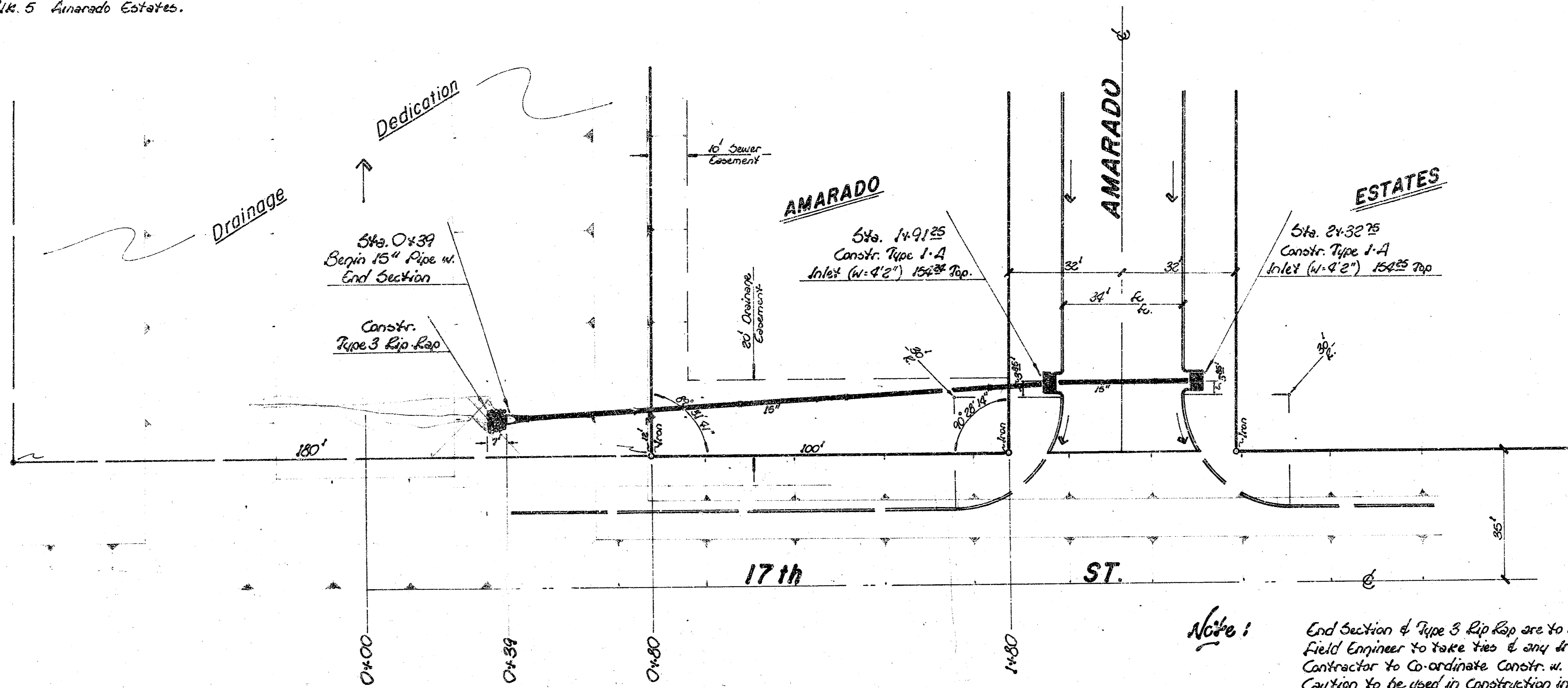
Roll Type Cb. & Curter to be constructed on this project.

AMARADO CT.  
LOT 9-14

3/6



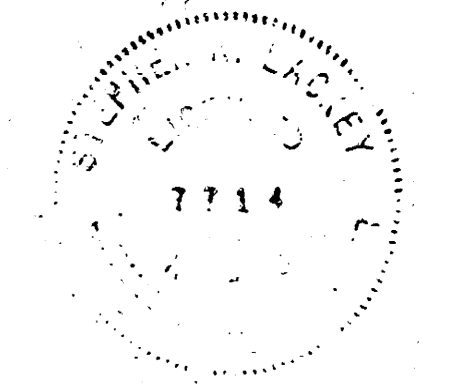
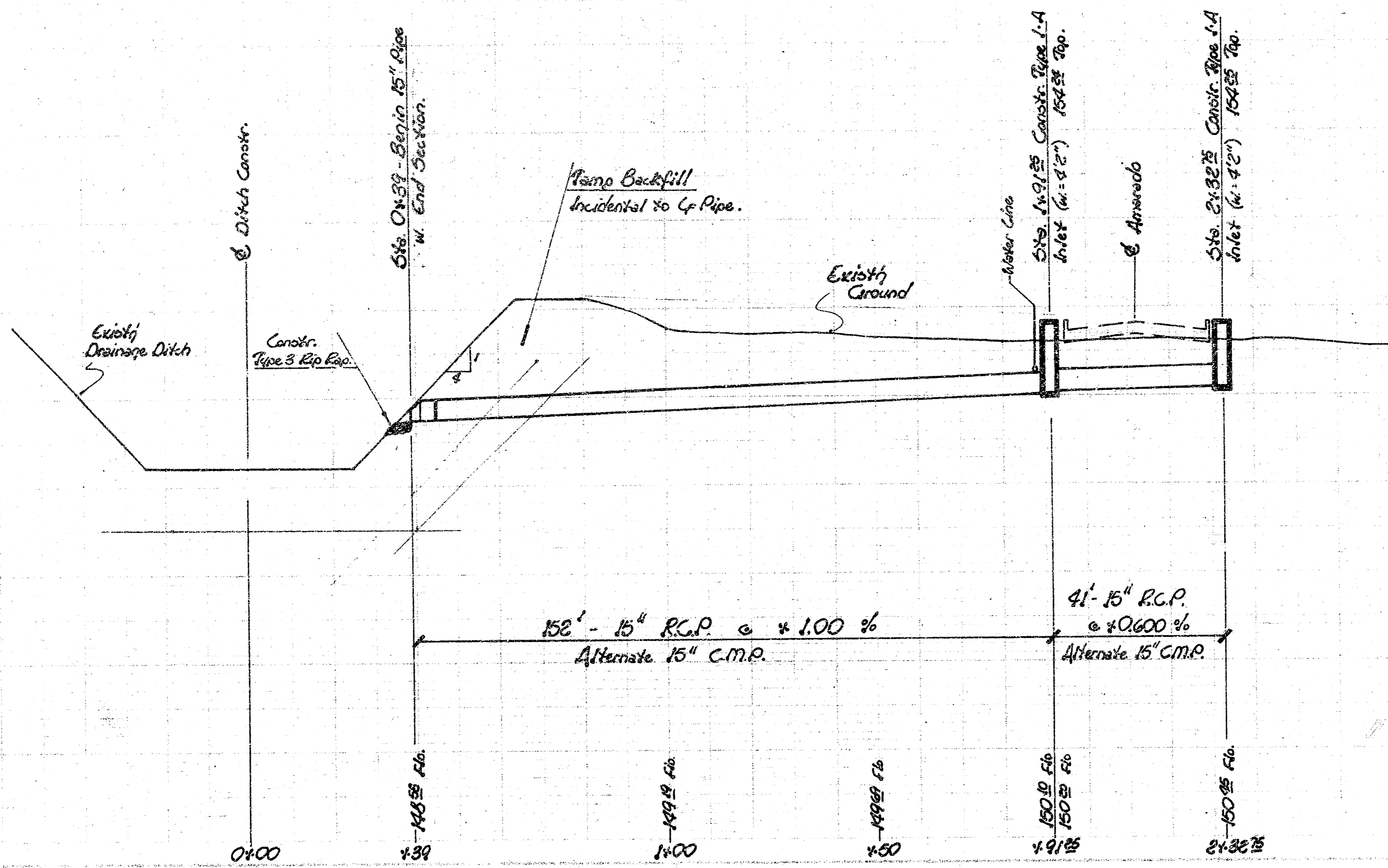
B.M. 153<sup>rd</sup> 'a' Ch. E.F. Conc. Lid SWS Co. (S. Co of E) W.C. Amarado Dr.  
Between Lots 8-9 Blk. 5 Amarado Estates.



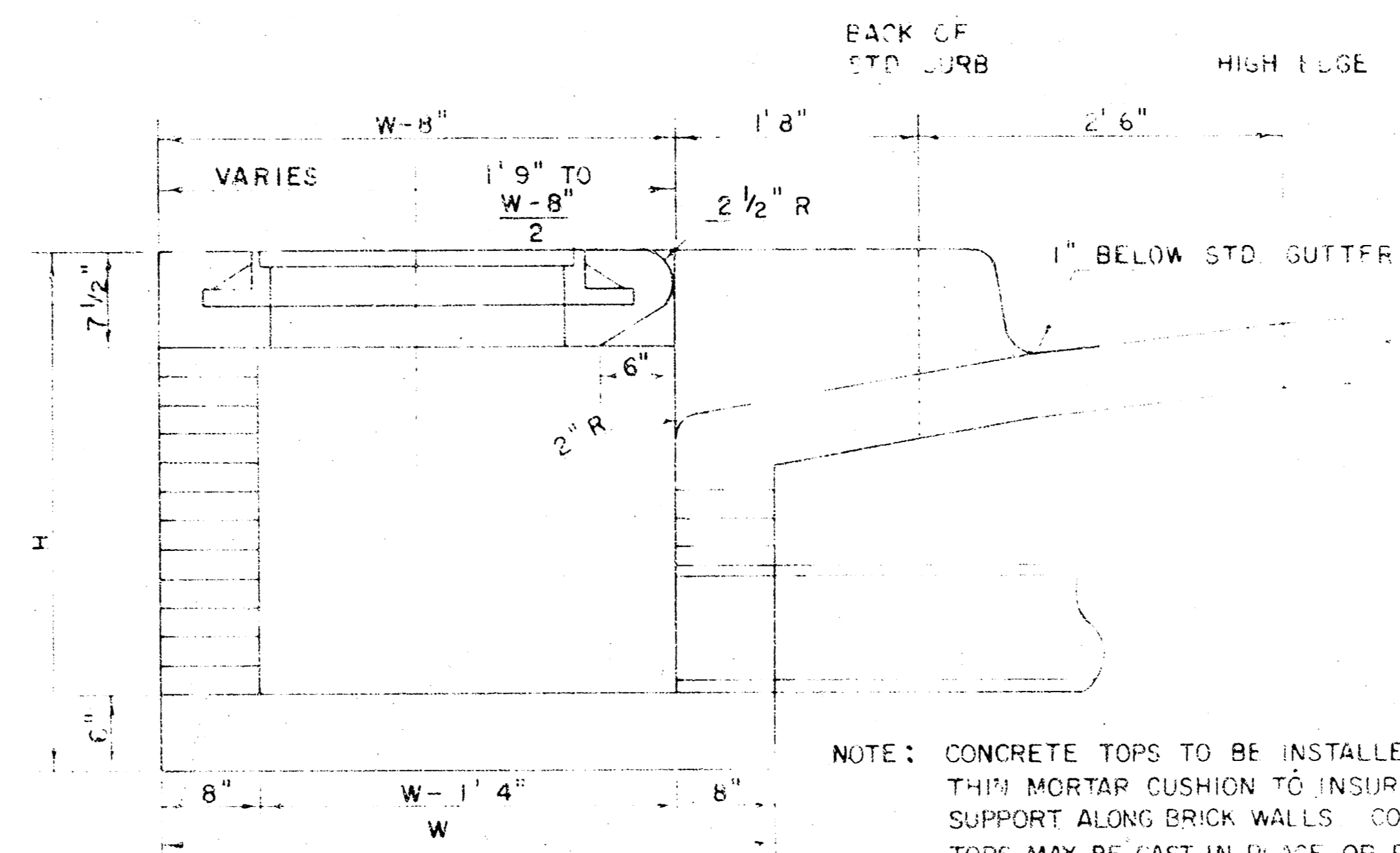
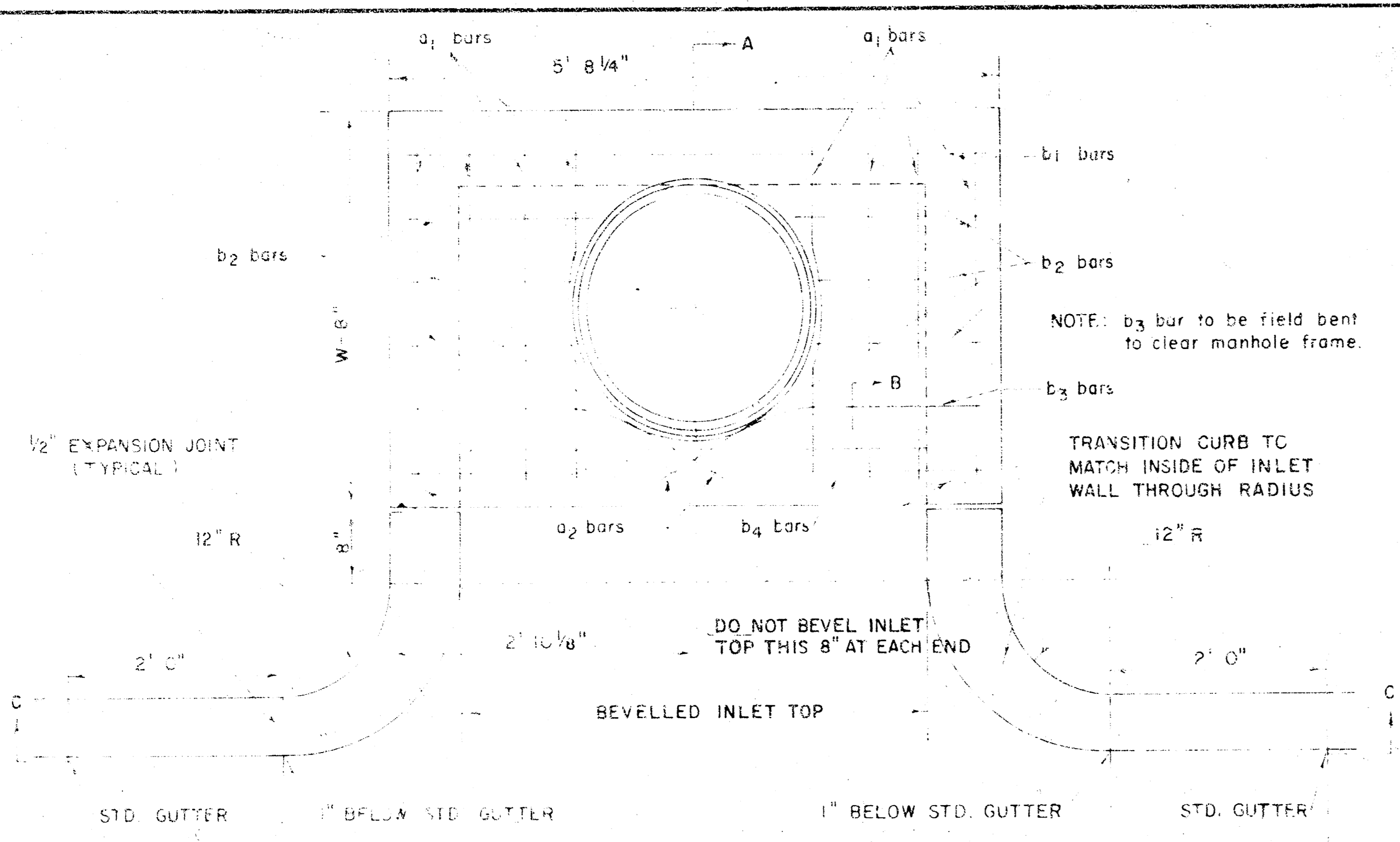
Scale - Plan 1"=20'  
Profile 1"=5' Vert.  
1"=20' Hor.

**Note:**  
End Section of Type 3 Rip Rap are to be considered as incidental to C.P. Pipe. Field Engineer to take ties & any drops moved or destroyed shall be replaced. Contractor to Co-ordinate Constr. w. Pavement Contractor. Caution to be used in Construction in Order to keep sewer pipe well inside of the 20' Drainage Easement as much as possible. Contractor has the option of constructing Pre-Cast Conc. Inlets Type I-A - See Detail Sheet Dated August 79.

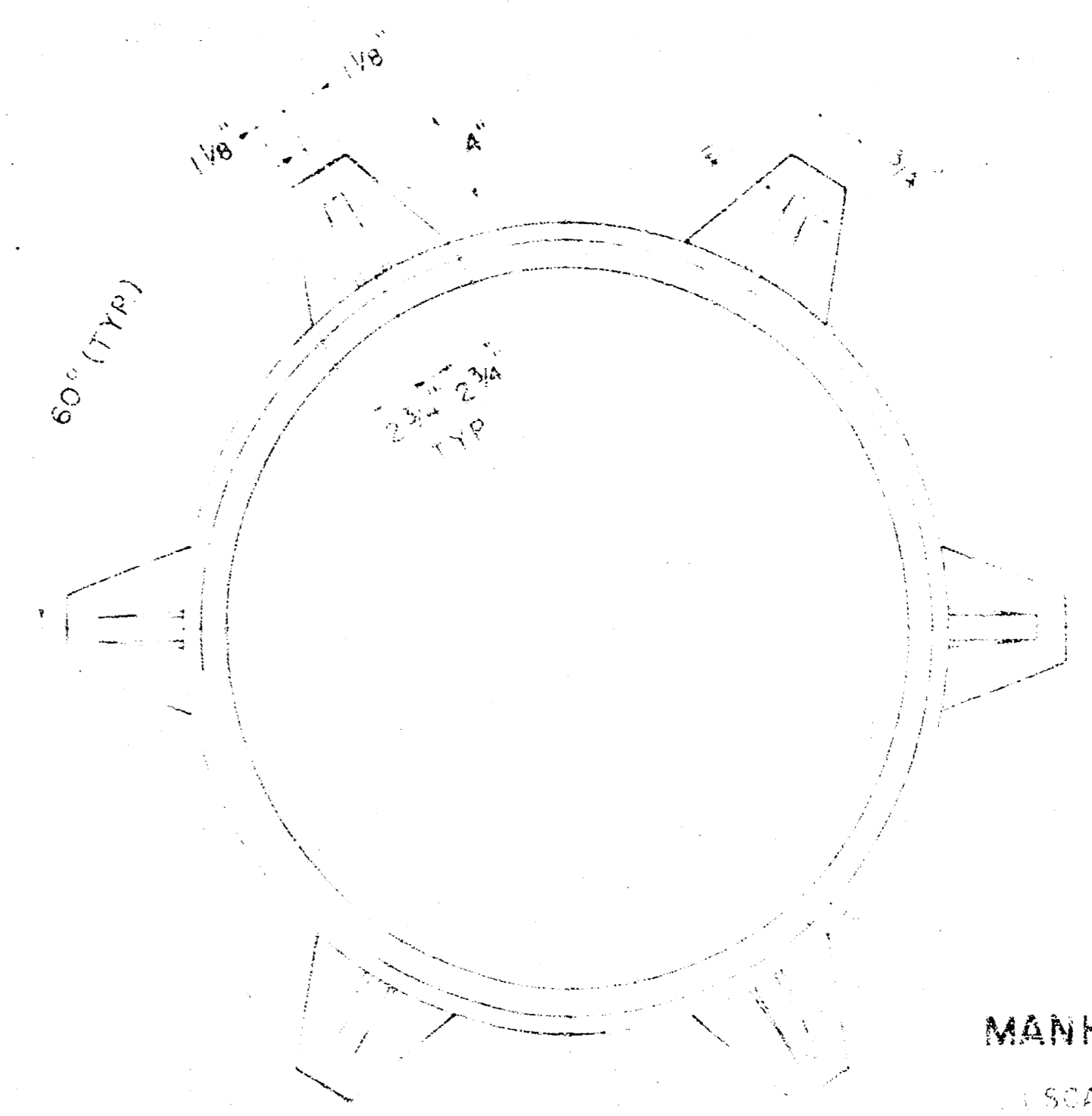
155  
150  
145



Incidental Drainage in Connection w.  
**AMARADO CT'S & AMARADO**  
**CITY OF WICHITA, KS.**  
D. S. Sellers - Acting City Engineer  
Project No. \_\_\_\_\_  
472-76-245-80326-000-000-001 (5/6)



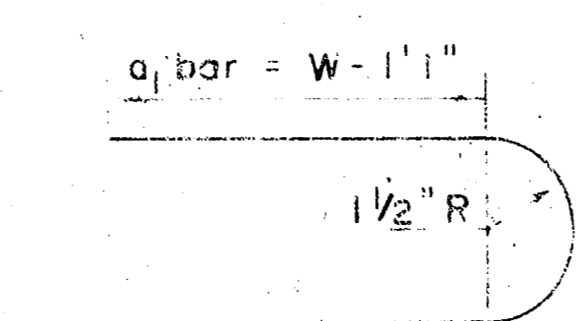
SECTION A-A  
(SCALE 1" = 1'0")



MANHOLE FRAME  
(SCALE 1" = 6")  
WEIGHT = 180 LBS

HIGH EDGE  
ASPHALT PAVING ONLY

PLAN (SCALE 1" = 1'0")



BENDING DIAGRAM

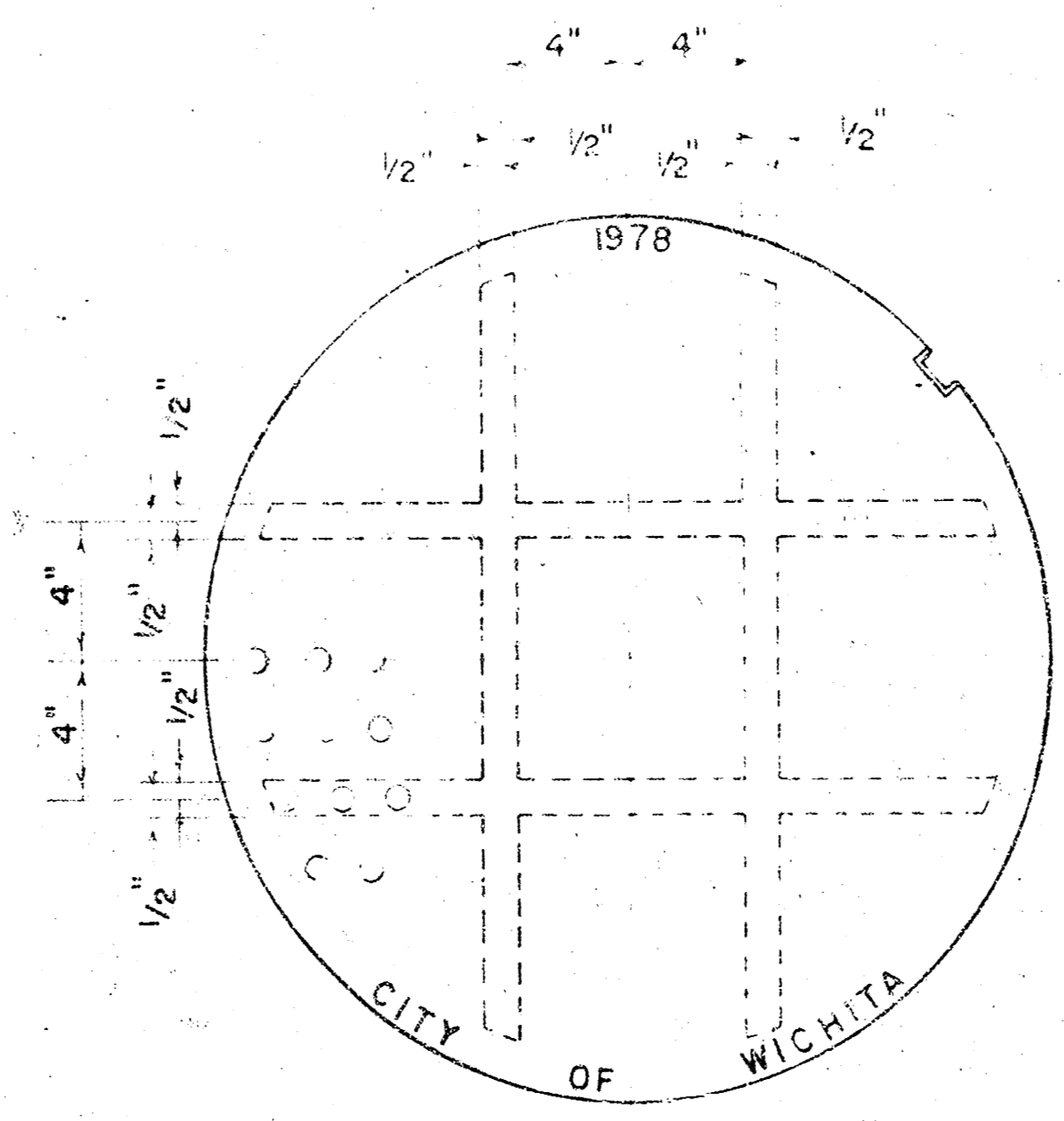
STEEL SCHEDULE

BAR NUMBER	a <sub>1</sub>	a <sub>2</sub>	W-4"	W-5"	W-6"	W-7"	W-8"	b <sub>1</sub>	b <sub>2</sub>	b <sub>3</sub>	b <sub>4</sub>	WT. LBS.
W-4"2"	6"5"	3"4"	5"5"					1"5"	5"6"	5"5"	60"	
W-5"0"	8"1"	4"4"	5"5"					1"5"	5"6"	5"5"	77"	
W-6"0"	10"1"	5"4"	5"5"					1"5"	5"6"	5"5"	97"	
W-7"0"	11"1"	6"4"	5"5"					1"5"	5"6"	5"5"	111"	
W-8"0"	12"1"	7"4"	5"5"					1"5"	5"6"	5"5"	124"	

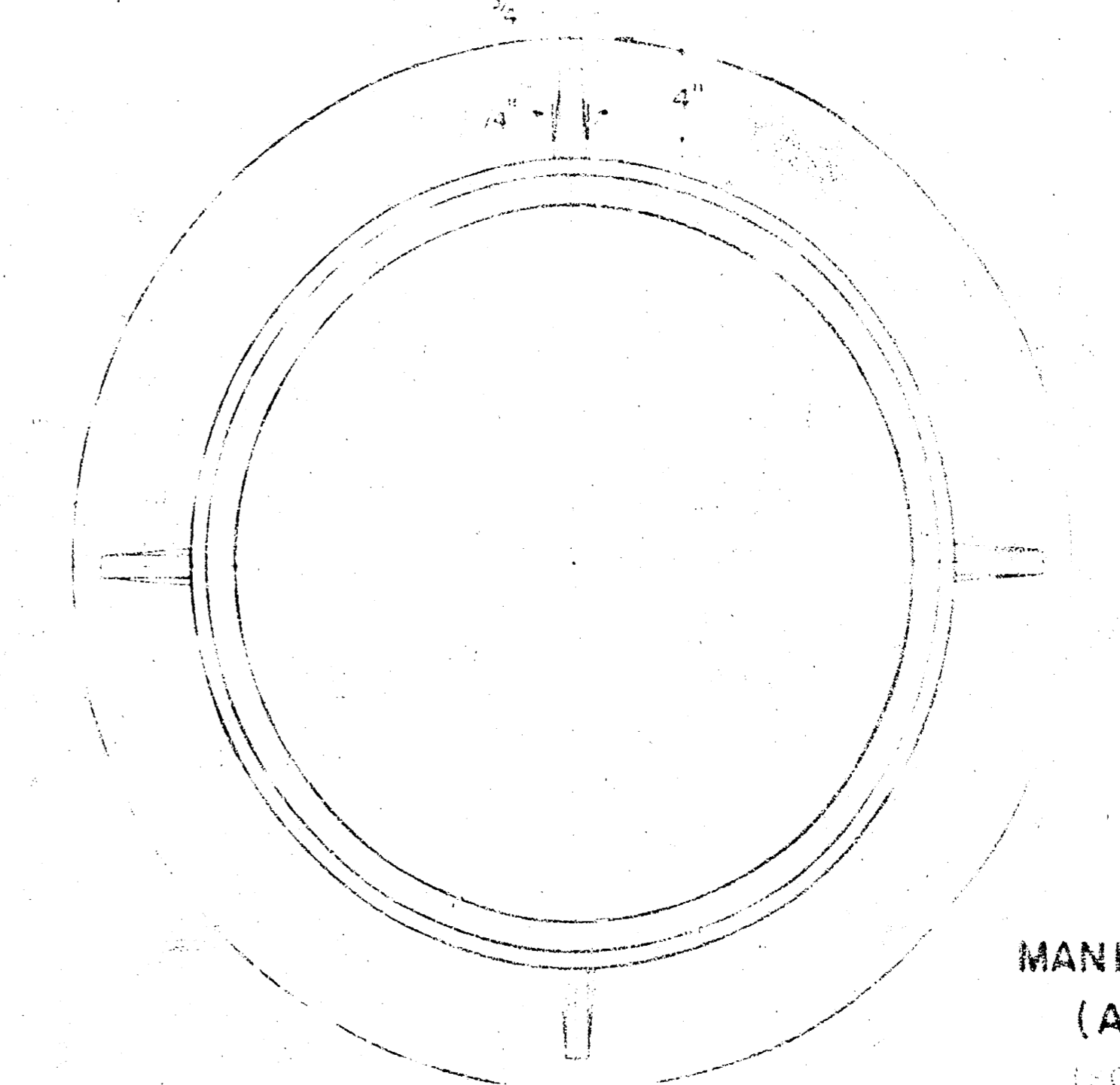
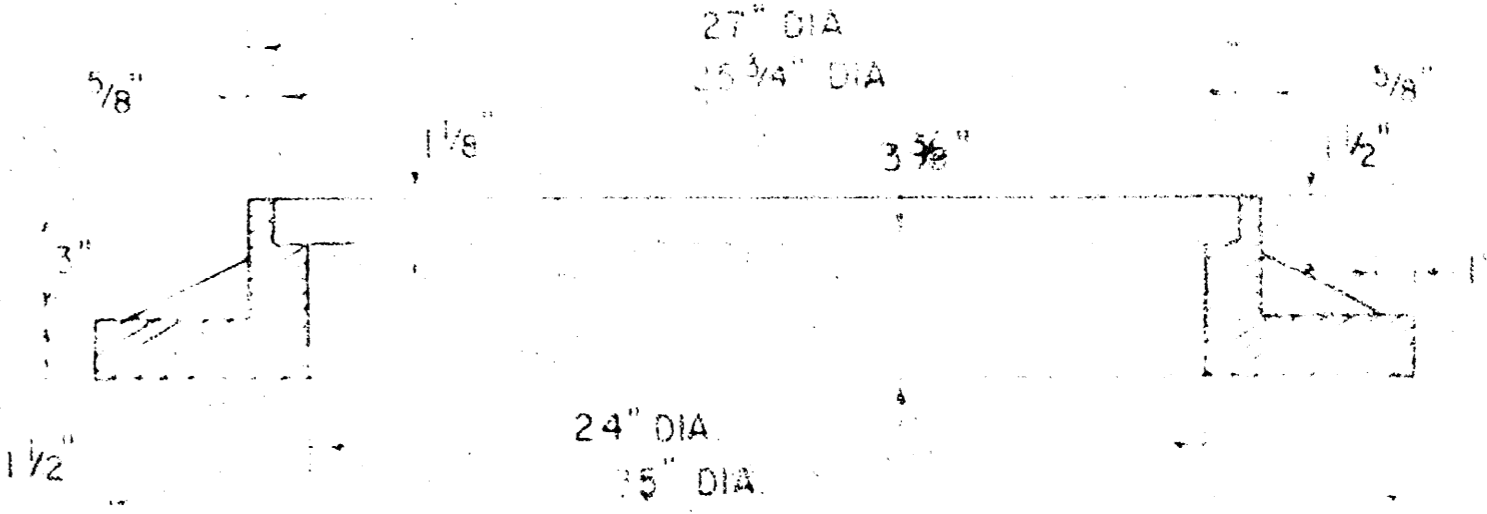
\* NOTE: a<sub>2</sub> BARS TO BE PLACED APPROX 2" BELOW TOP OF INLET COVER

STANDARD CURB INLET PRECAST TOPS			CU. YD. CONC.
W	PRE-CAST TOP SIZE	PIPE SIZE	
4"	36" x 5'8 1/4" x 7 1/2"	21" & SMALLER	0.46 *
5"0"	44" x 5'8 1/4" x 7 1/2"	24" & 30"	0.57 *
6"0"	54" x 5'8 1/4" x 7 1/2"	36" & 42"	0.71 *
7"0"	64" x 5'8 1/4" x 7 1/2"	48" & 54"	0.84 *
8"0"	74" x 5'8 1/4" x 7 1/2"	60" & 66"	0.97 *

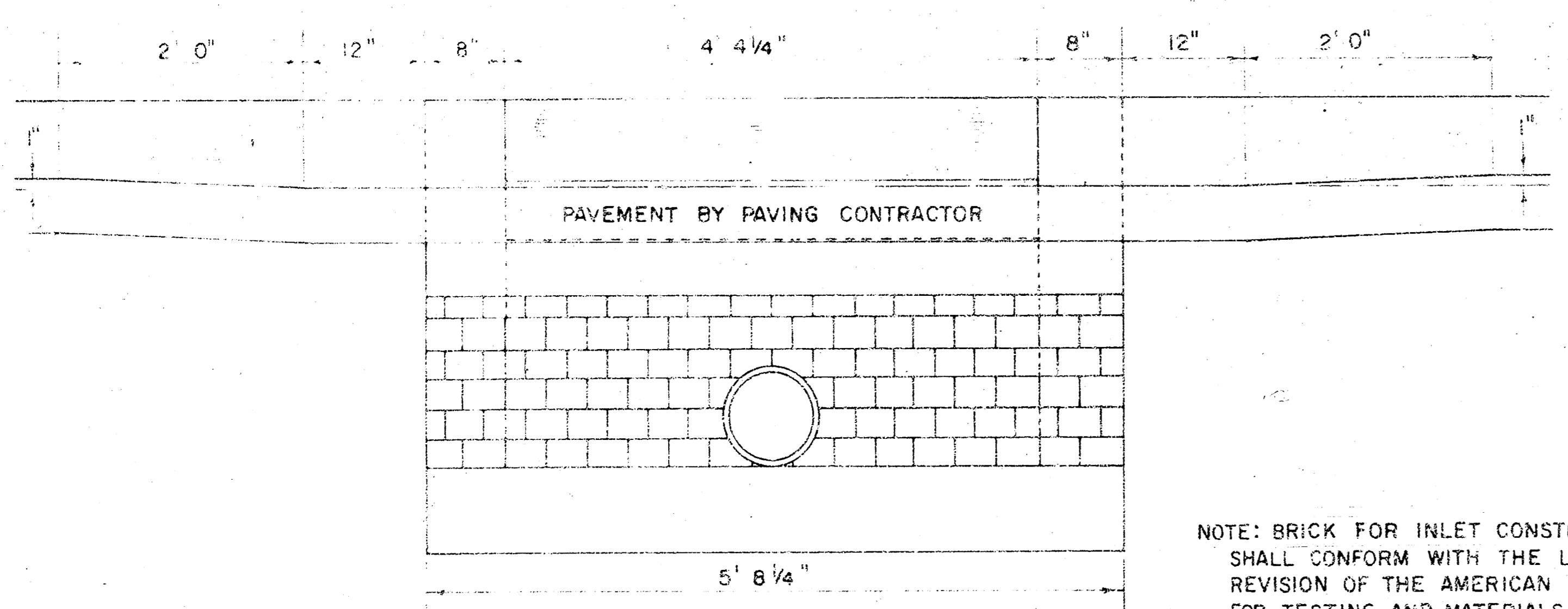
\* GROSS VOLUME



MANHOLE COVER  
(SCALE 1" = 6")  
WEIGHT = 170 LBS.

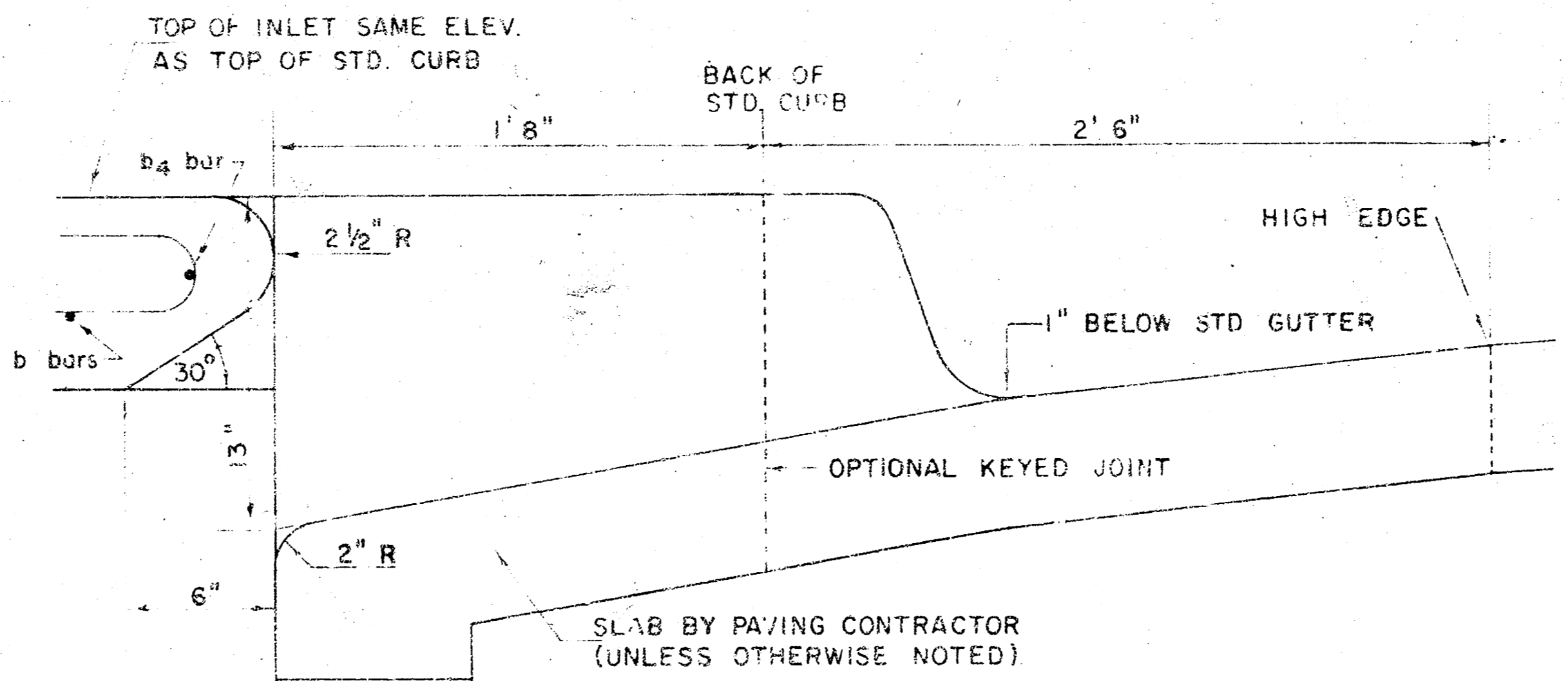


MANHOLE FRAME  
(ALTERNATE)  
(SCALE 1" = 6")  
WEIGHT = 180 LBS.



SECTION C-C  
(SCALE 1" = 1'0")

NOTE: BRICK FOR INLET CONSTRUCTION SHALL CONFORM WITH THE LATEST REVISION OF THE AMERICAN SOCIETY FOR TESTING AND MATERIALS DESIGNATION C-32 FOR MANHOLE BRICK GRADE MS.



SECTION B-B  
(SCALE 1" = 6")

NOTE: MANHOLE FRAMES AND COVER ARE WESTERN IRON AND FOUNDRY CO. INC. OR EQUAL DESIGNS AS FOLLOWS:  
FRAME: 500-L64  
FRAME (ALTERNATE): 500 A4  
COVER: 222 S4 "NOBBY"

DETAIL STANDARD TYPE IA CURB INLET  
CITY OF WICHITA, KANSAS  
R. W. LINN - CITY ENGINEER  
OCTOBER 1978

FILMED FROM THE BEST AVAILABLE COPY.....