

AMARADO INVESTMENT COMPANY INC. WICHITA, KANSAS

CONSTRUCTION PLANS FOR

PHASE I

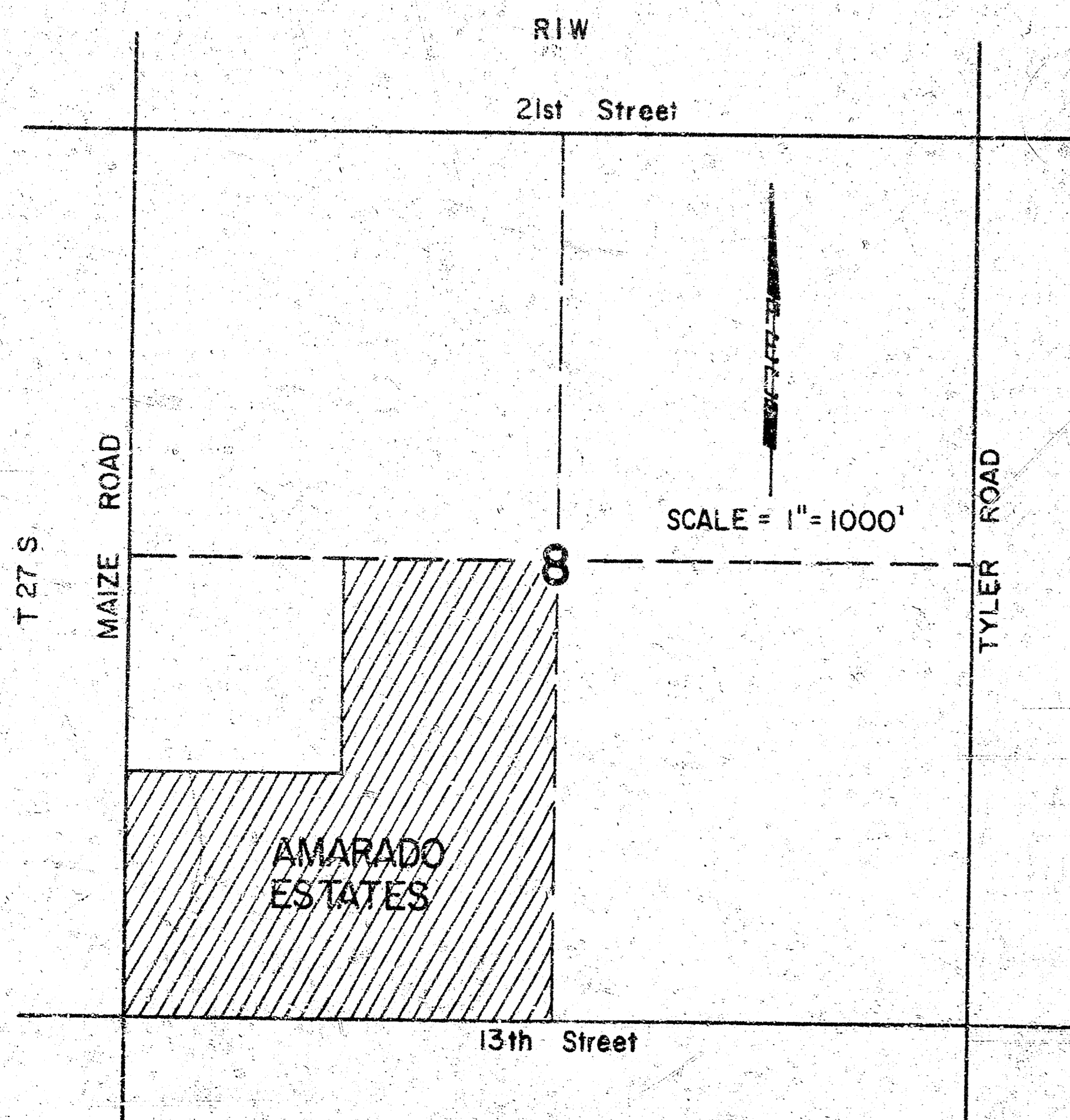
STREET IMPROVEMENTS AMARADO ESTATES

PART B

CITY PROJECT NO. DAKS575118

INDEX

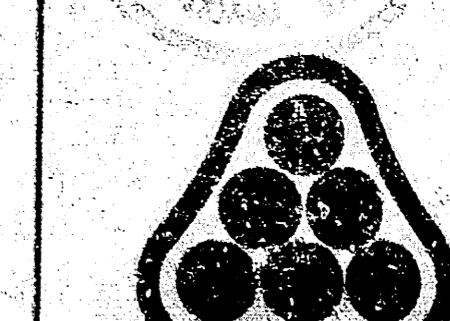
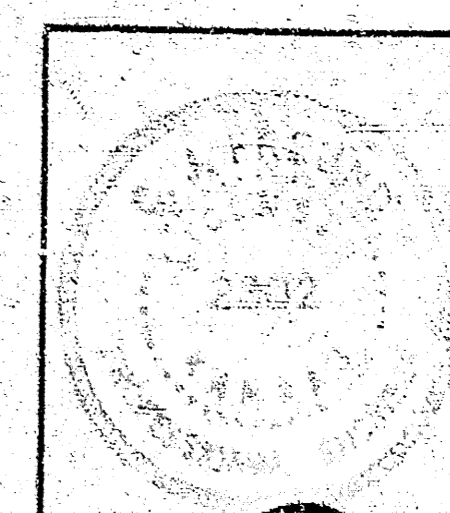
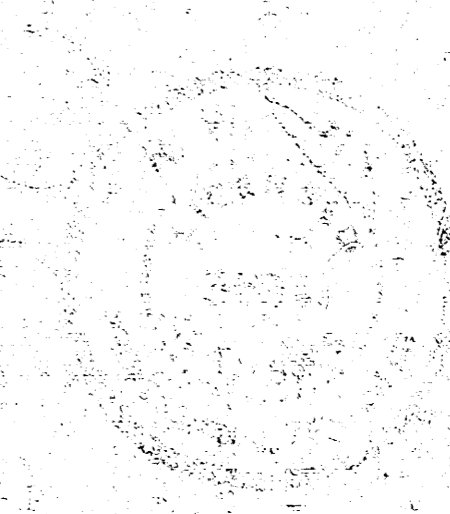
1. TITLE SHEET
2. SUMMARY OF QUANTITIES AND GENERAL INFORMATION
3. DETAILS
- 4-5. INTERSECTION DETAILS



LOCATION MAP

APRIL
1976

PROFESSIONAL ENGINEERING CONSULTANTS, P.A.
ENGINEERS
WICHITA, KANSAS



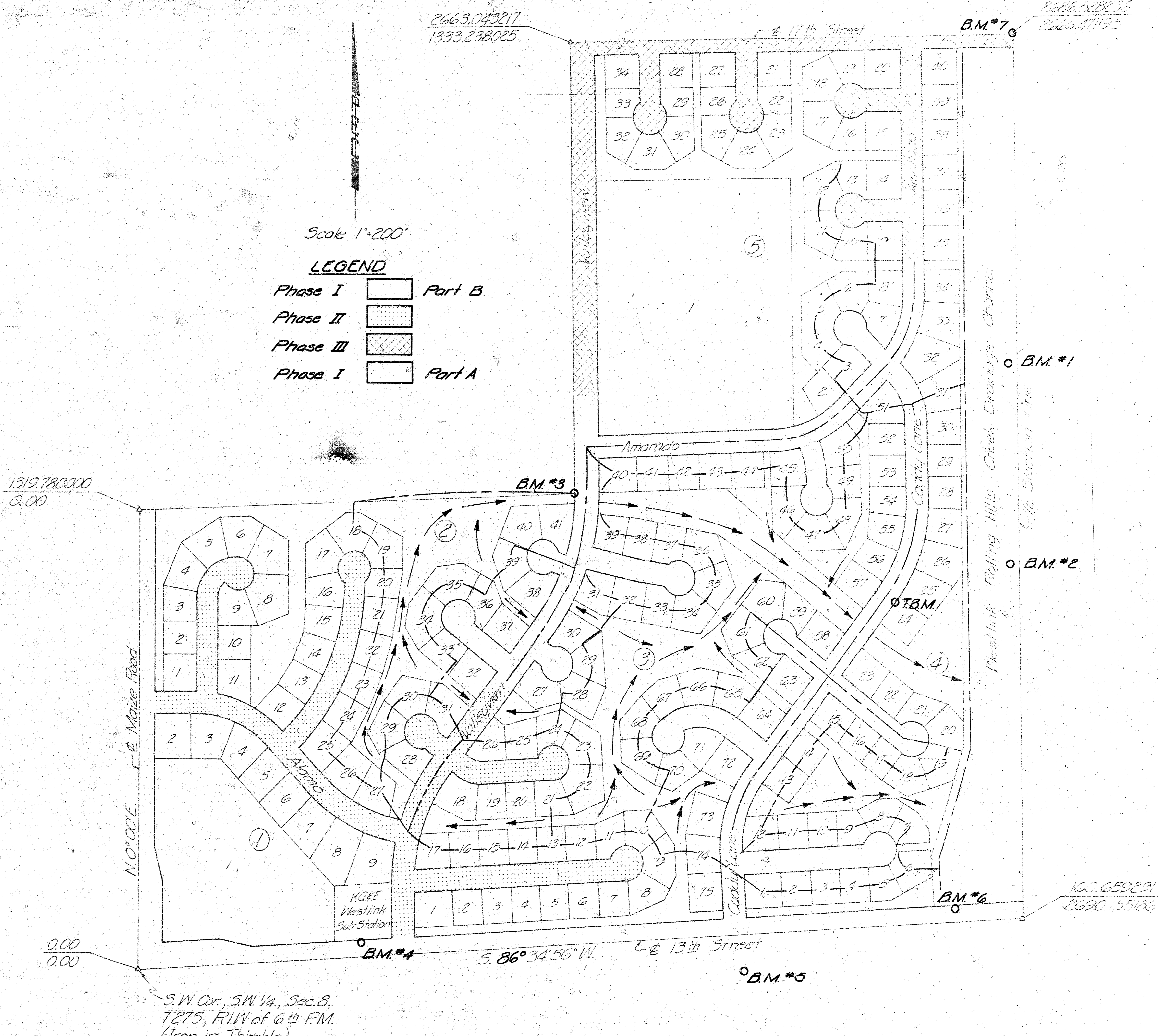
No.	Revision	By	Date
AMARADO INVESTMENT COMPANY, INC.			
TITLE SHEET			
PHASE I - Part B			
AMARADO ESTATES STREET IMPROVEMENT			
PROFESSIONAL ENGINEERING CONSULTANTS, P.A.			
ENGINEERS			
WICHITA, KANSAS			
Designed by	Job No.	Sheets	

GENERAL NOTES

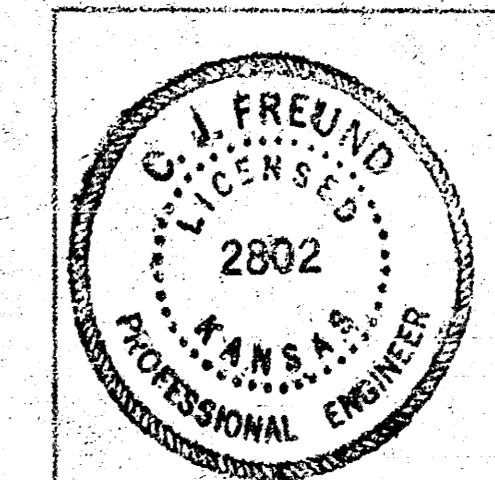
1. All Elevations City of Wichita Datum.
2. 0.00 N., 0.00 E. = @ 13th St. @ @ Maize Road.
3. All Street construction and materials to comply with City of Wichita Standards and Specifications.
4. $\frac{160.659291}{2690.155186}$ = $\frac{\text{Coordinate N.}}{\text{Coordinate E.}}$
5. All Radii shown are to back of Curb.
6. The contractor shall adjust existing sanitary sewer manholes within street R/W as directed by the Engineer.
7. A Sanitary Sewer Manhole to be adjusted as directed.
8. Existing Iron to be maintained.
9. Existing Sanitary Sewer & Manhole.
10. Existing Storm Drain & Inlet.
11. Existing Water Line & Fire Hydrant.
12. Section Letter or Detail No.
 Sheet on which Section or Detail is shown.
13. Areas to be constructed under this Contract.

SUMMARY OF QUANTITIES				
BID ITEM NO.	DESCRIPTION	UNIT	PROPOSED QUANTITY	AS-BUILT QUANTITY
1	3" Bituminous Base	S.Y.	45	
2	4" Bituminous Base	S.Y.	35	
3	6" Asph Pavt. (6" bit. base)	S.Y.	990	
4	9" Asph Pavt. (7" bit. base)	S.Y.	925	
5	Comb. Curb & Gtr.	L.F.	225	
6	Manipulation	S.Y.	2615	
7	Lime or Cement	Ton	33	
8	Excavation	C.Y.	750	
9	Compacted Backfill	C.Y.	220	
10	* 8" Valley Gutter	S.Y.	320	
11	** 9" Valley Gutter	S.Y.	190	
12	Integral Curb	L.F.	285	

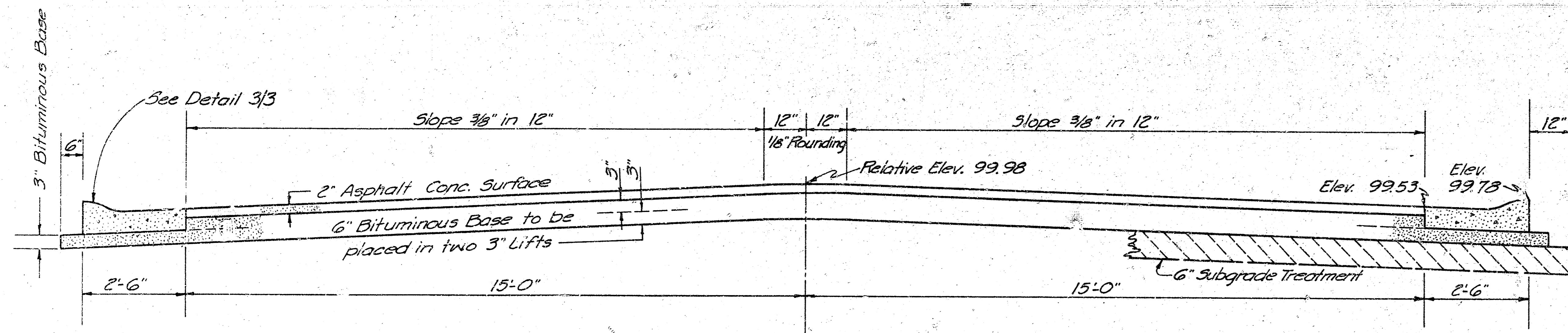
To be bid as -
 * 8" Valley Gutter (6" conc. 4" asph. base)
 * 9" " " " " " " " " " " " "



AMARADO ESTATES



As per City review		RJ 3/26/06
AMARADO INVESTMENT COMPANY INC.		
SUMMARY OF QUANTITIES AND GENERAL INFORMATION		
PHASE I - Part B		
AMARADO ESTATES STREET IMPROVEMENTS		



TYPICAL SECTION A
35' ASPHALTIC CONCRETE PAVEMENT WITH BITUMINOUS BASE

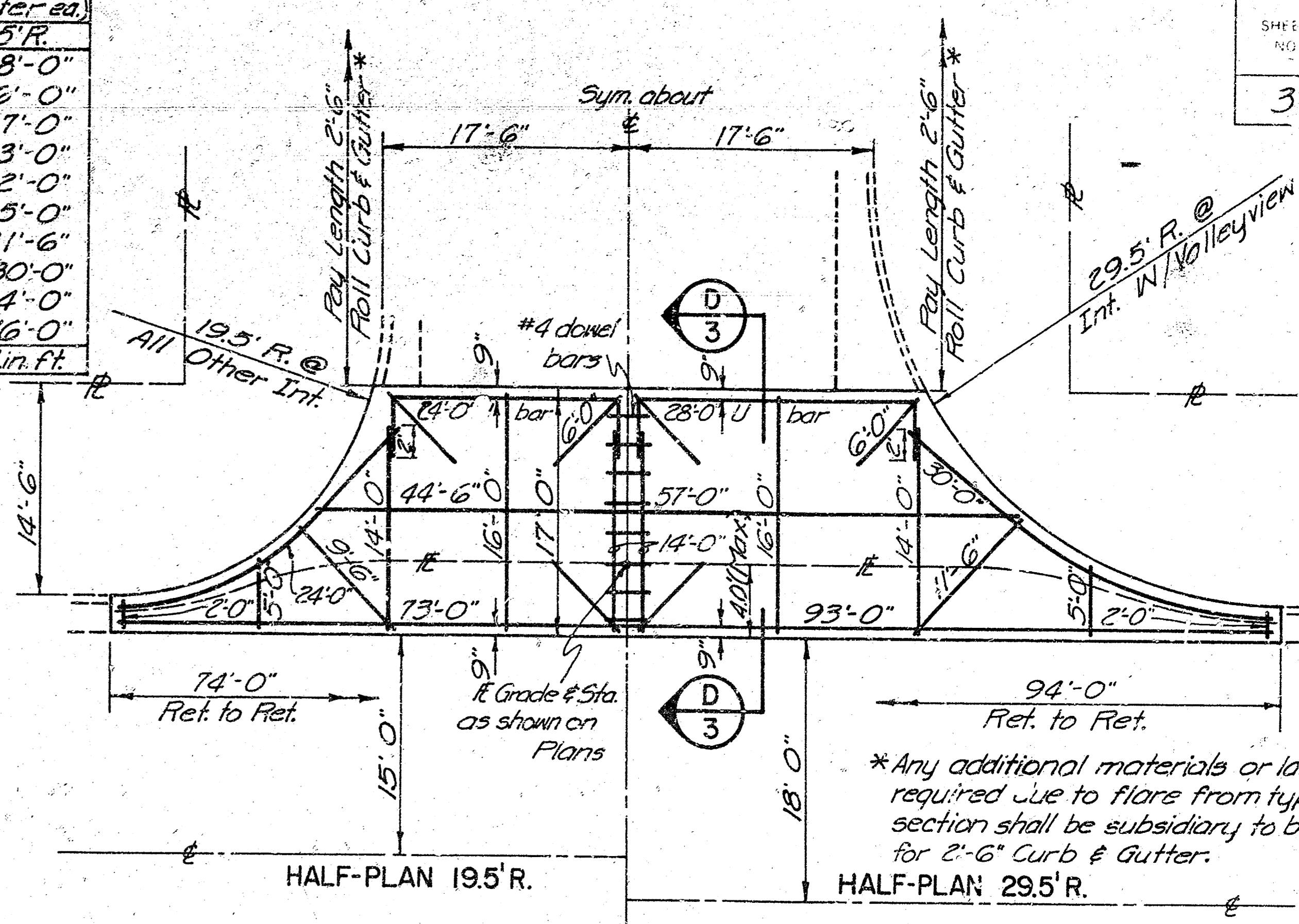
A tack coat of Emulsified Asphalt (55-1H) shall be applied at an approx. rate 0.05 Gal. per sq. yd. between lifts of asphaltic materials when ordered by the Engineer. Tack coat will not be paid for directly but shall be subsidiary to price bid for Asphaltic Pavement.

The A.C. Pavement between the Comb. Curb & Gutter shall be paid as Sq. Yds. 8" A.C. Pavement (6" Bituminous Base) or Sq. Yds. 9" A.C. Pavement (7" Bituminous Base). The Bituminous Base under the Comb. Curb & Gutter shall be paid as Sq. Yds. 3" Bituminous Base or 3q. Yds. 4" Bituminous Base.

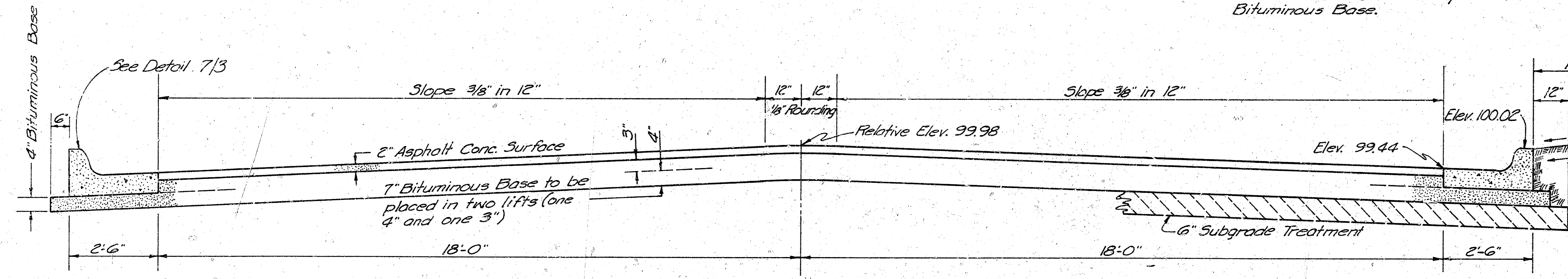
***6 # Bar List (Valley Gutter 20')**

19.5' R.	Shape	29.5' R.
2 24'-0"	U	2 28'-0"
6 6'-0"	—	6 6'-0"
1 44'-6"	—	1 57'-0"
3 2'-0"	—	2 2'-0"
2 5'-0"	—	2 5'-0"
2 9'-6"	—	2 11'-6"
2 24'-0"	—	2 30'-0"
4 14'-0"	—	4 14'-0"
2 16'-0"	—	2 16'-0"
370.5 Lin. Ft. Total		421.0 Lin. Ft.

All bars in Valley Gutter are #6 bars except dowel bars.

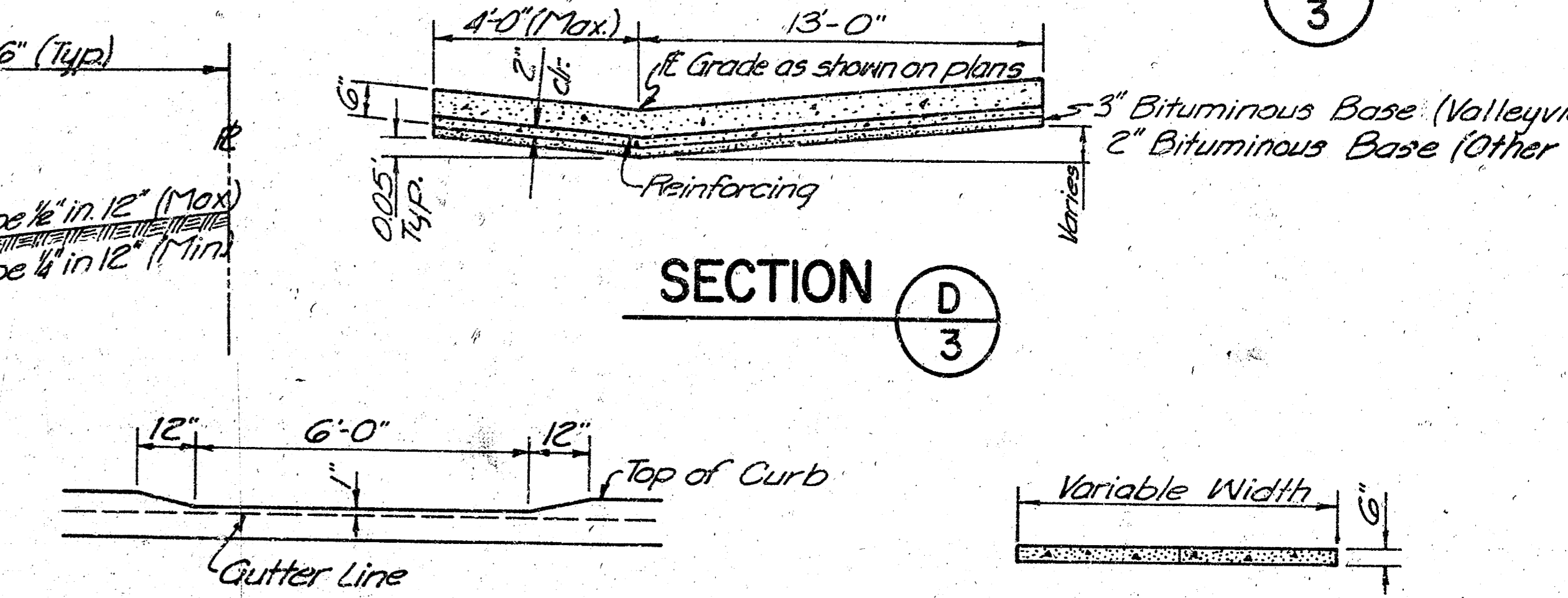


VALLEY GUTTER DETAIL 2/3

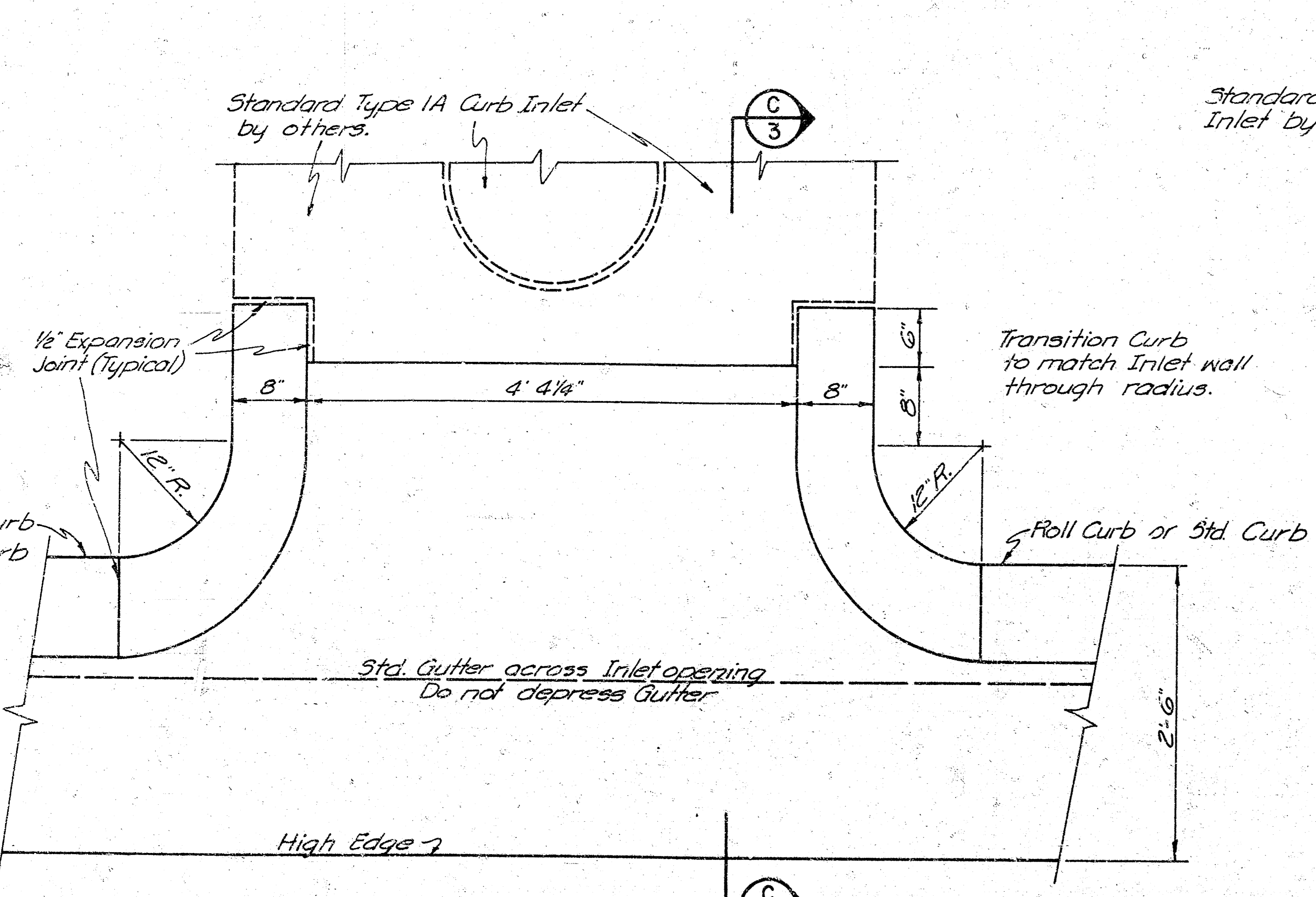


TYPICAL SECTION B
41' ASPHALTIC CONCRETE PAVEMENT WITH BITUMINOUS BASE

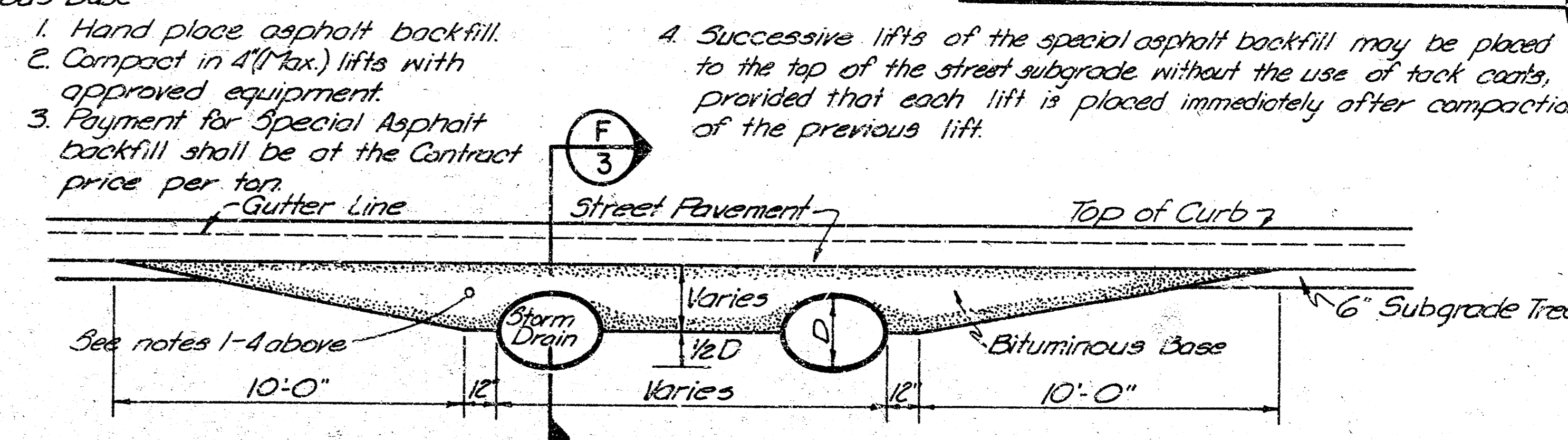
Bituminous Base and Asphaltic Concrete wearing surface shall be placed with a laydown machine having Automatic Electronic Controls for Crown and Grade. Construction joints in each lift shall be staggered a minimum distance of 12" with joints in preceding lifts and placed such that a joint will be constructed on the centerline in the top lift.



DEPRESSED CURB DETAIL 6/3



ROLL CURB & GUTTER DETAIL 3/3

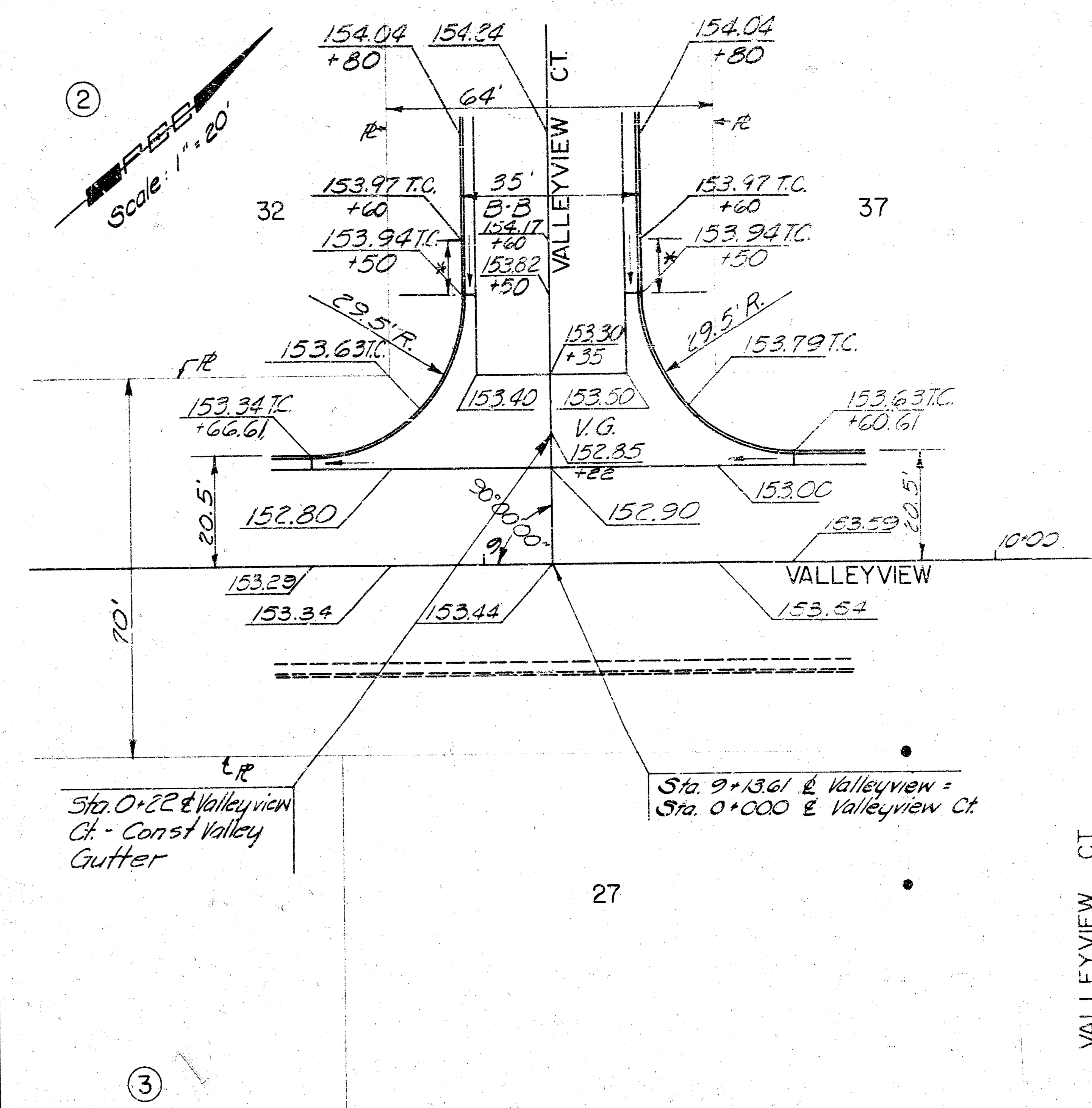
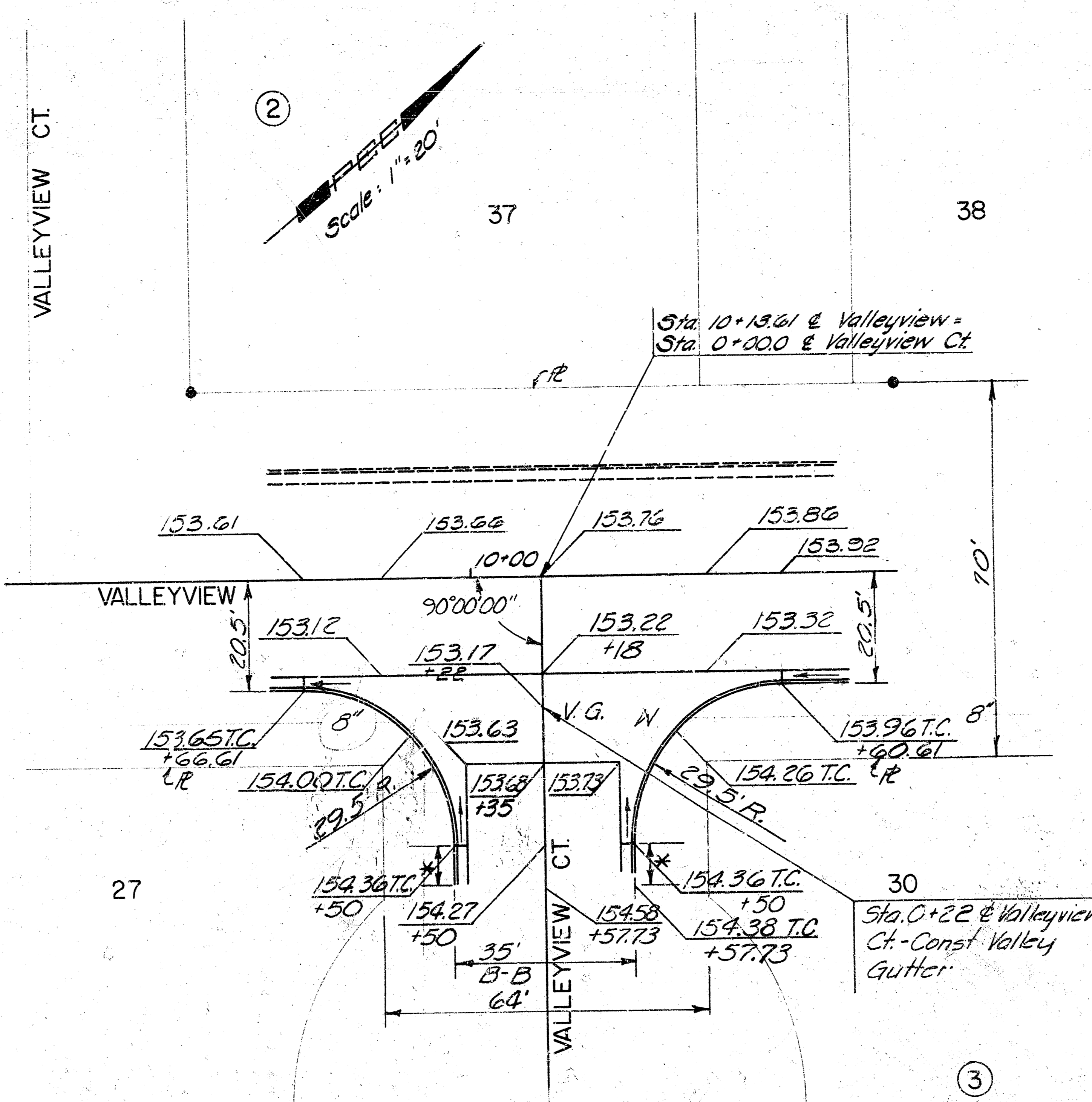


SPECIAL ASPHALT BACKFILL 5/3

1. Hand place asphalt backfill.
2. Compact in 4" (max) lifts with approved equipment.
3. Payment for Special Asphalt backfill shall be at the Contract price per ton.
4. Successive lifts of the special asphalt backfill may be placed to the top of the street subgrade without the use of tack coats, provided that each lift is placed immediately after compaction of the previous lift.

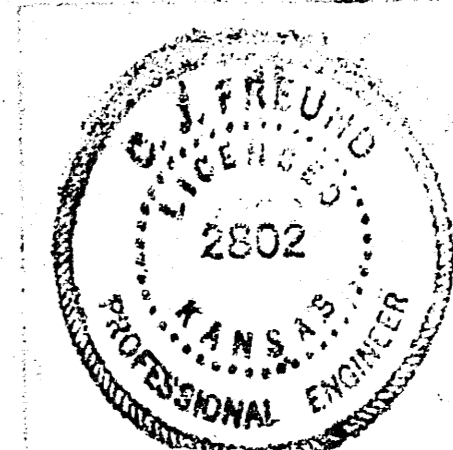
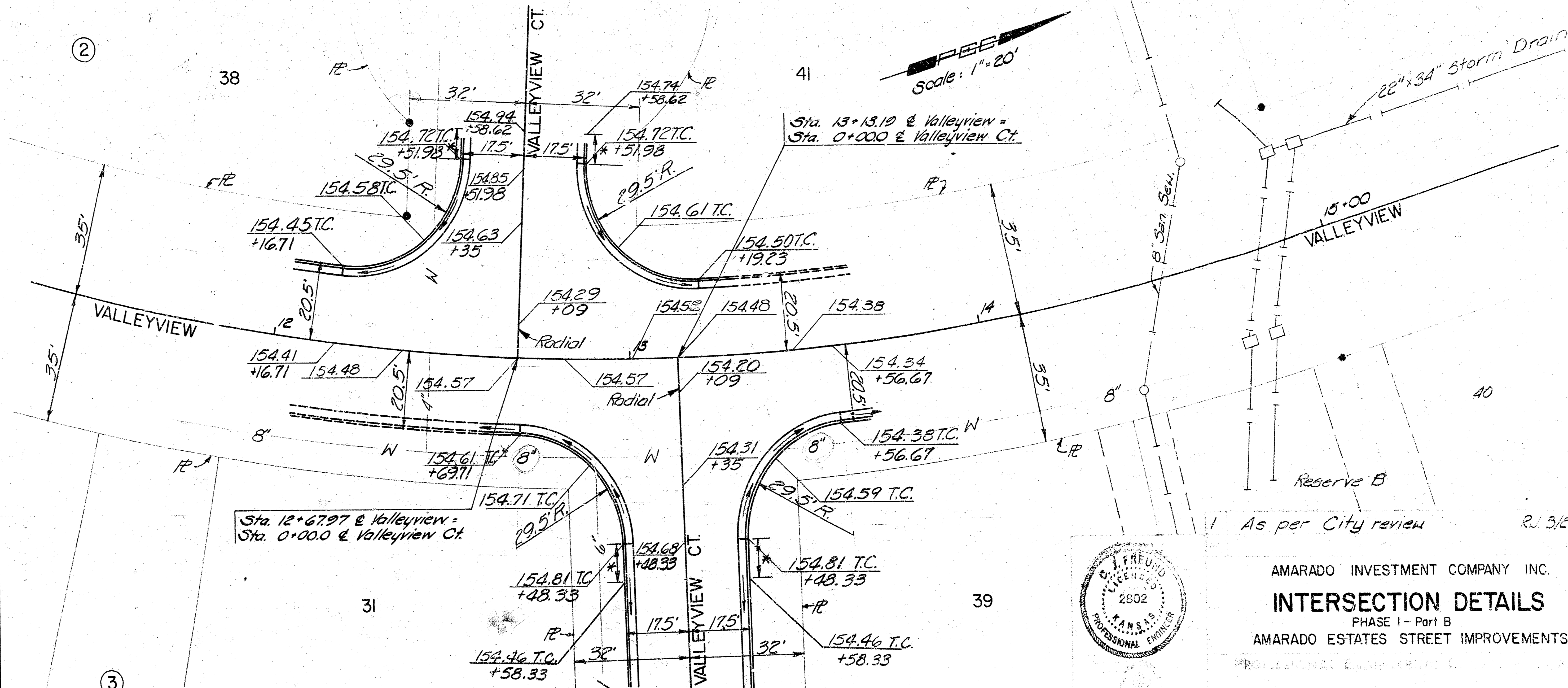
1 As per City Review

No.	Revision	By



* Transition from Std curb to Roll-Back curb

BM#4- Top of the SW bolt in base of Power Pole 127.7' Lt. Sta. 0+41 Valleyview El. 157.05



AMARADO INVESTMENT COMPANY INC.
INTERSECTION DETAILS
 PHASE I - Part B
 AMARADO ESTATES STREET IMPROVEMENTS

RJ 3/12/20