

B.M. 128.34  
 21st St. & Amidon  
 Checked

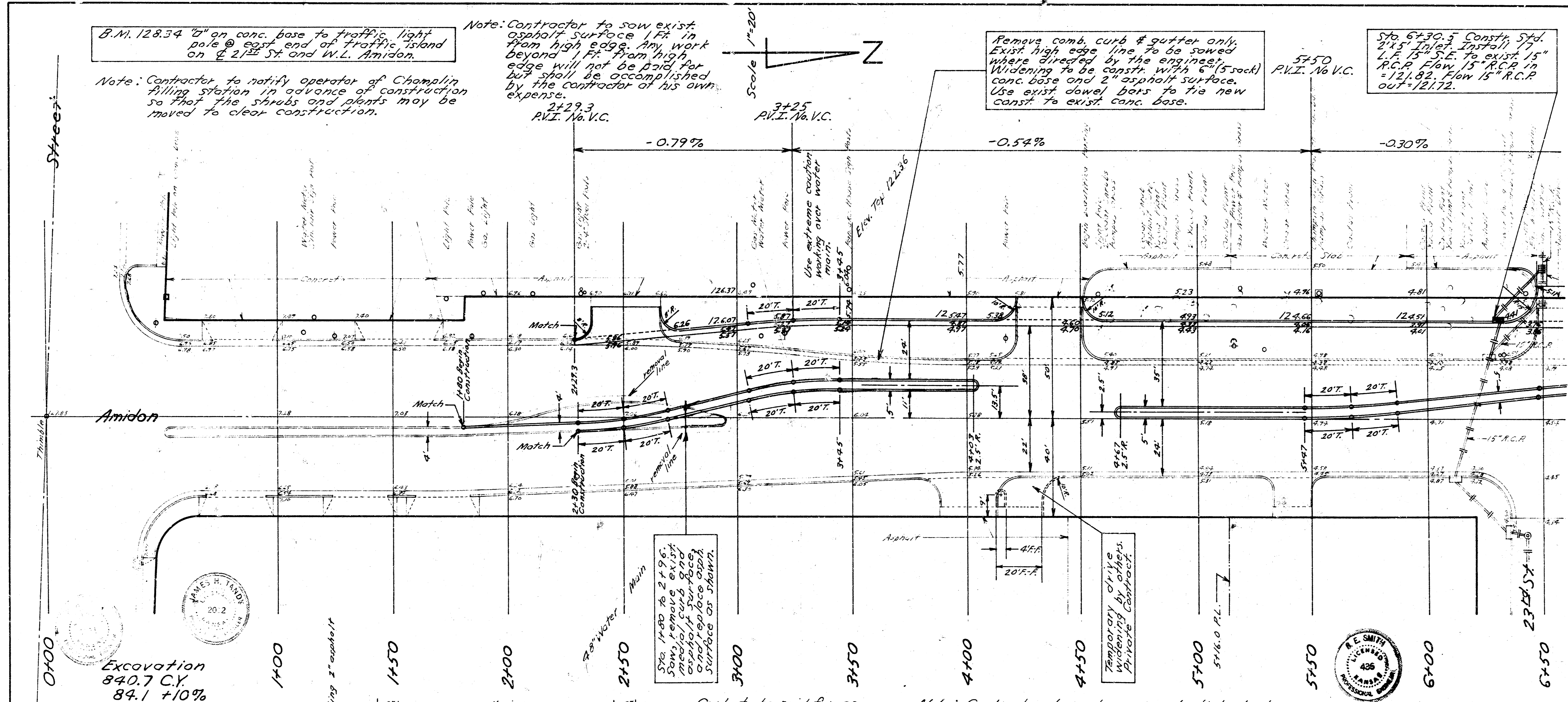
B.M. 128.34 on conc. base to traffic light pole @ east end of traffic island on 21st St. and W.L. Amidon.

Note: Contractor to notify operator of Champlin filling station in advance of construction so that the shrubs and plants may be moved to clear construction.

Note: Contractor to saw exist. asphalt surface 1 ft. in from high edge. Any work beyond 1 ft. from high edge will not be paid for but shall be accomplished by the contractor at his own expense.

Remove curb & gutter only. Exist high edge line to be sawed where directed by engineer. Widening to be const. with 6" (5 sack) conc. base and 2" asphalt surface. Use exist. dowel bars to tie new const. to exist. conc. base.

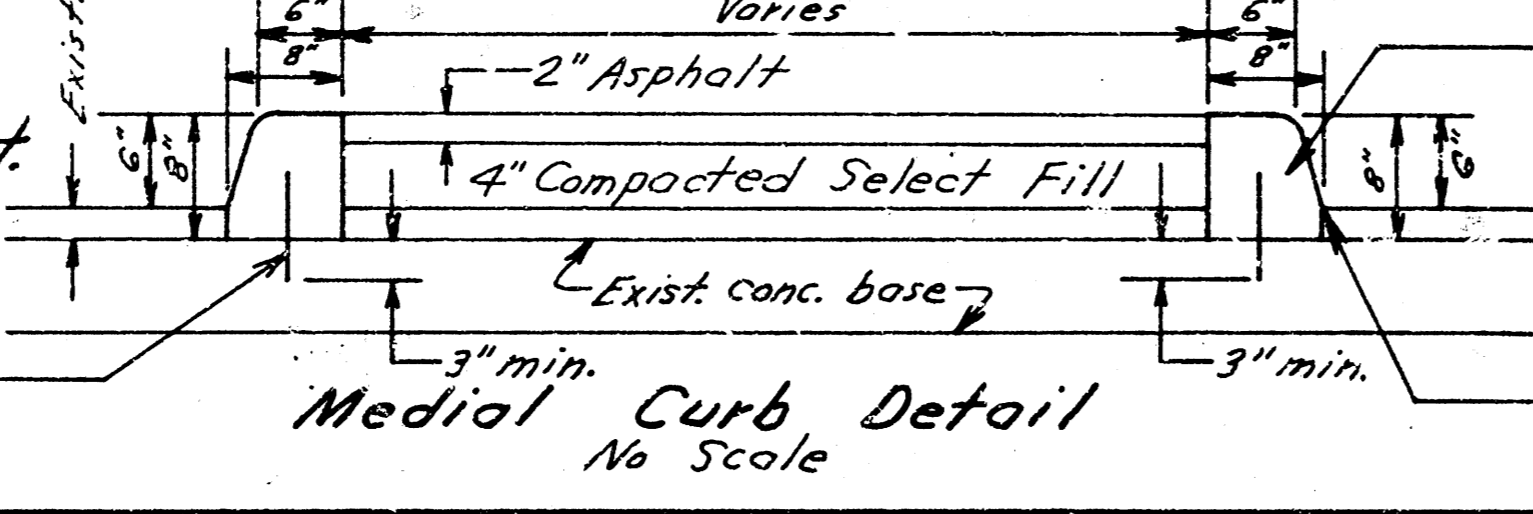
Sta. 6+30.5 Const. Std. 2'x5' Inlet. Install 17" L.C.P. Flow 15" R.C.P. in 5'x12' sq. Flow 15" R.C.P. out=12172.



Excavation  
840.7 C.Y.  
84.1 ±10%  
924.8 C.Y.

No S.G.M. on this project.

Drill holes in exist. conc. base and grout in #4 dowel bars on 30" ctrs.

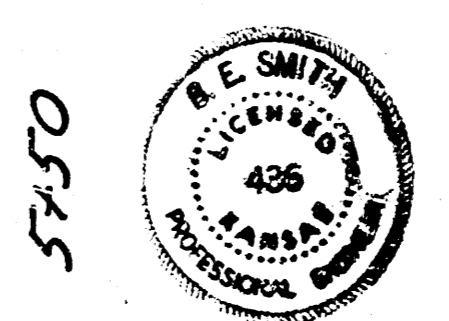


Curb to be paid for as L.F. of Doweled Medial Curb.

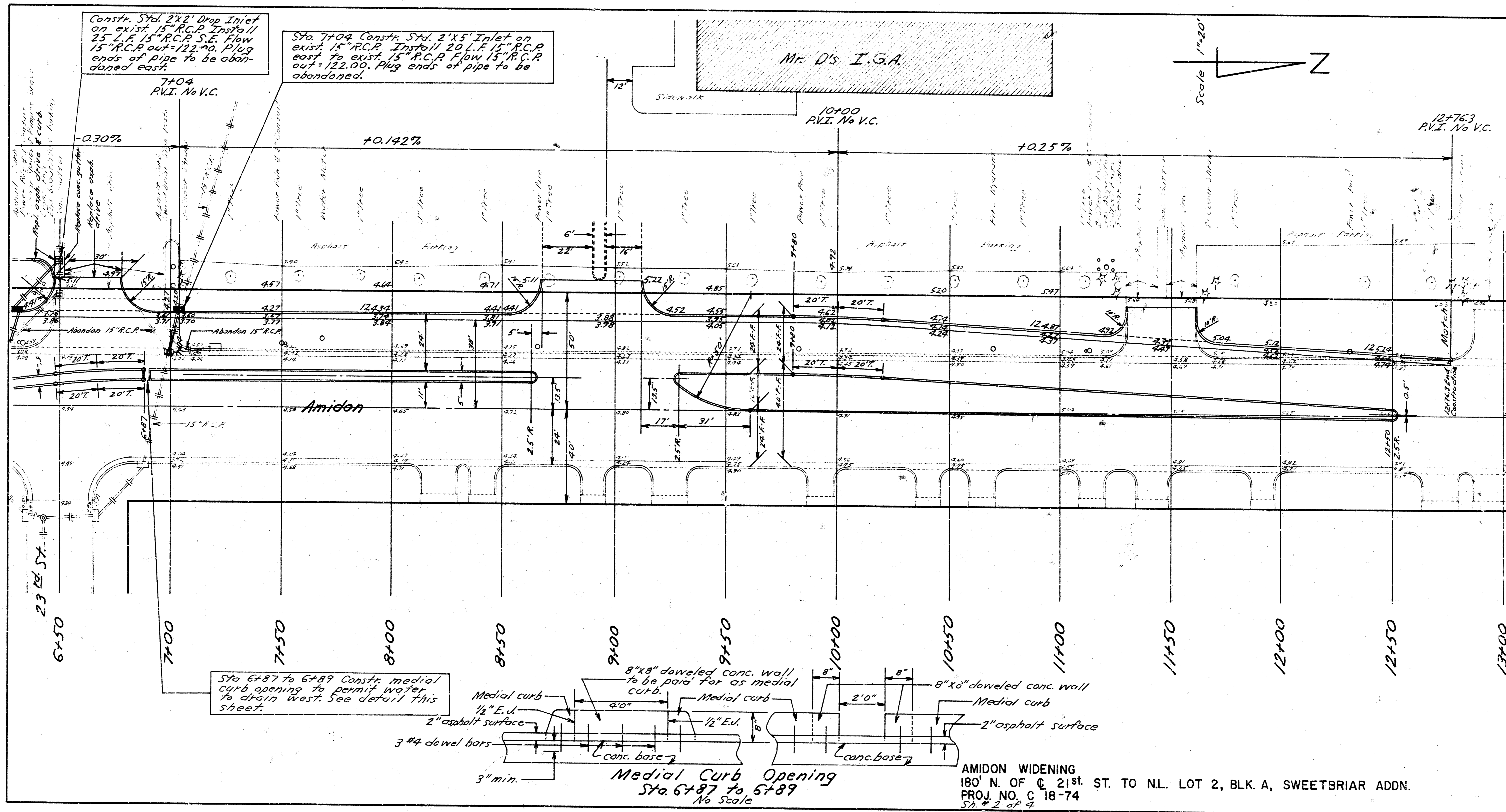
Note: Sawing will not be paid for along back of medial curb. Asp. surf. to remain in place between medial curb.

Saw asphalt to line of face of curb patch in with hot asphalt surface mixture if necessary on circular lines.

Note: Contractor to replace gravel disturbed on parking between sta. 4+50 & 6+50 to original condition and to the back of new curb line. This work shall not be paid for directly and shall be considered as incidental to construction. Contractor to grade parking to top of new curb. Location of sites for disposal of broken concrete and asphalt is to be determined by contractor and approved by the Engineer. Replacement of all exist. asphalt surface to be paid for as tons of asphalt.



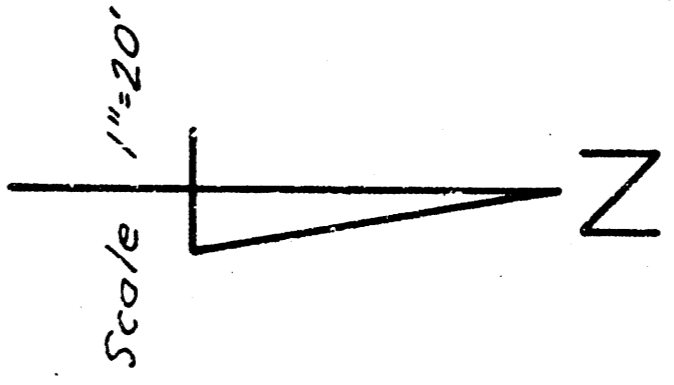
**AMIDON AVE. WIDENING**  
 180' N. OF 21st ST. TO N.L.  
 LOT 2, BLK A, SWEETBRIAR ADDN.  
 CITY OF WICHITA, KANSAS  
 B. E. SMITH, CITY ENGINEER  
 PROJ. NO. C 18-74  
 DATE: JULY 1969  
 Sh. #1 of 4



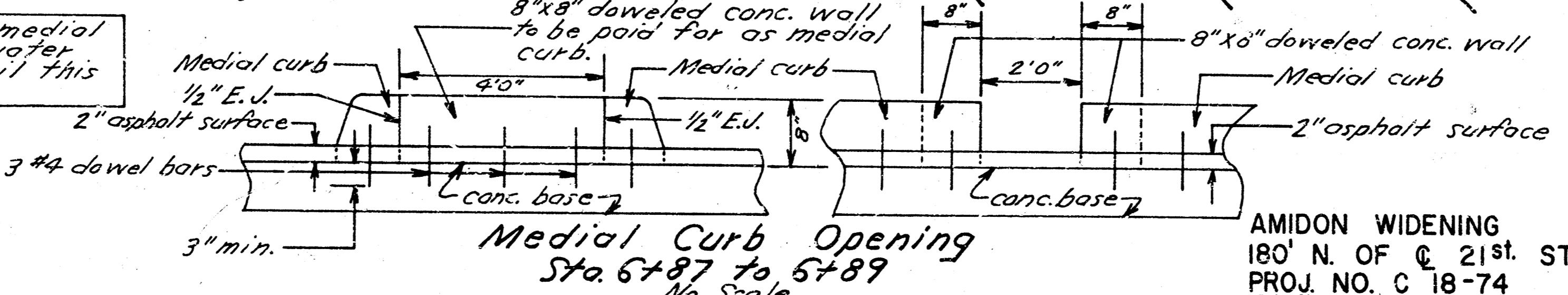
Constr. Std. 2'x2' Drop Inlet on exist. 15" R.C.P. Install 25' L.F. 15" R.C.P. S.E. Flow 15" R.C.P. out=122.00. Plug ends of pipe to be abandoned east.

Sta. 7+04 Constr. Std. 2'x5' Inlet on exist. 15" R.C.P. Install 20' L.F. 15" R.C.P. east to exist. 15" R.C.P. Flow 15" R.C.P. out=122.00. Plug ends of pipe to be abandoned.

Mr. D's I.G.A.



Sta. 6+87 to 6+89 Constr. medial curb opening to permit water to drain West. See detail this sheet.



AMIDON WIDENING  
180' N. OF C. 21st. ST. TO NL. LOT 2, BLK. A, SWEETBRIAR ADDN.  
PROJ. NO. C 18-74  
SH. # 2 of 4